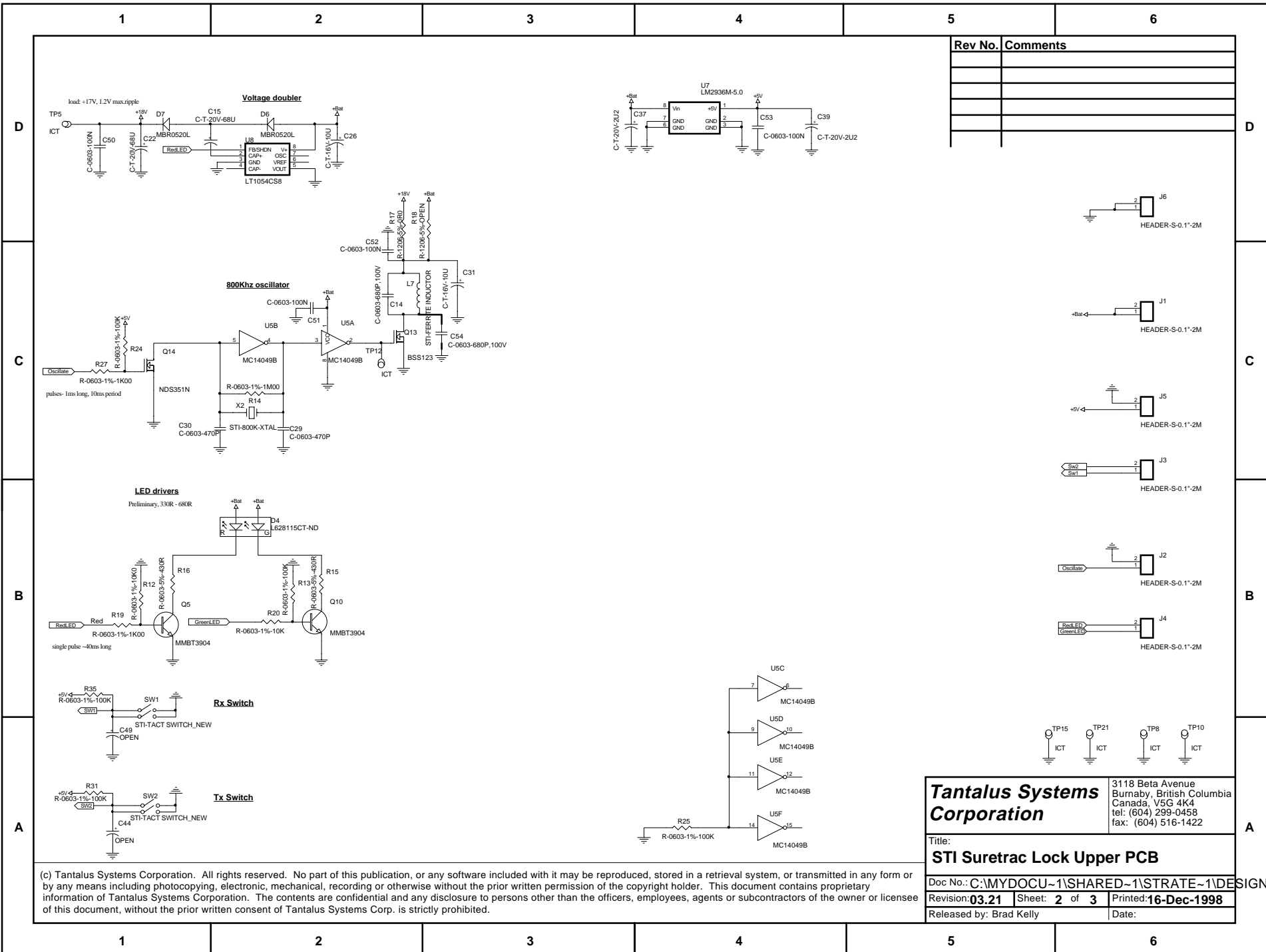


Voltage doubler



Rev No.	Comments

Tantulus Systems Corporation
 3118 Beta Avenue
 Burnaby, British Columbia
 Canada, V5G 4K4
 tel: (604) 299-0458
 fax: (604) 516-1422

Title:
STI Suretrac Lock Upper PCB

Doc No.: C:\MYDOCU~1\SHARED~1\STRATE~1\DESIGN\ARTWC
 Revision: **03.21** Sheet: **2 of 3** Printed: **16-Dec-1998**
 Released by: Brad Kelly Date:

(c) Tantulus Systems Corporation. All rights reserved. No part of this publication, or any software included with it may be reproduced, stored in a retrieval system, or transmitted in any form or by any means including photocopying, electronic, mechanical, recording or otherwise without the prior written permission of the copyright holder. This document contains proprietary information of Tantulus Systems Corporation. The contents are confidential and any disclosure to persons other than the officers, employees, agents or subcontractors of the owner or licensee of this document, without the prior written consent of Tantulus Systems Corp. is strictly prohibited.