



FIGURE 3: RFID Mousepad Transmitter, Front (Game Port Configuration)



FIGURE 4: RFID Mousepad Transmitter, Back (Game Port Configuration)



FIGURE 5: PrestoPad Mousepad Transmitter, Front (Serial Port Configuration)

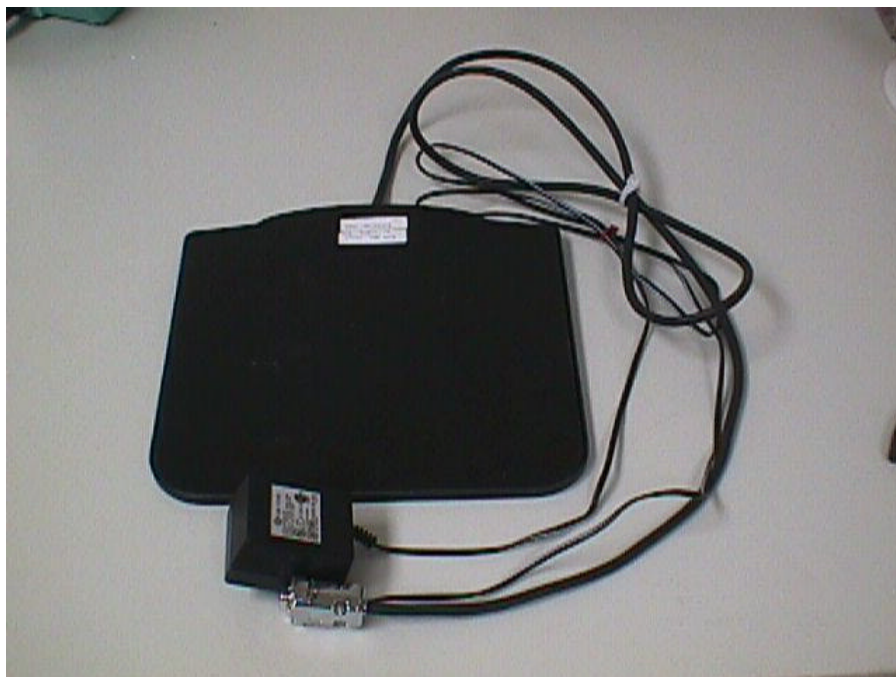


FIGURE 6: PrestoPad Mousepad, Back (Serial Port Configuration)



FIGURE 7: Top Side Mousepad Housing



FIGURE 8: Inductive Antenna



FIGURE 9: Mousepad Housing

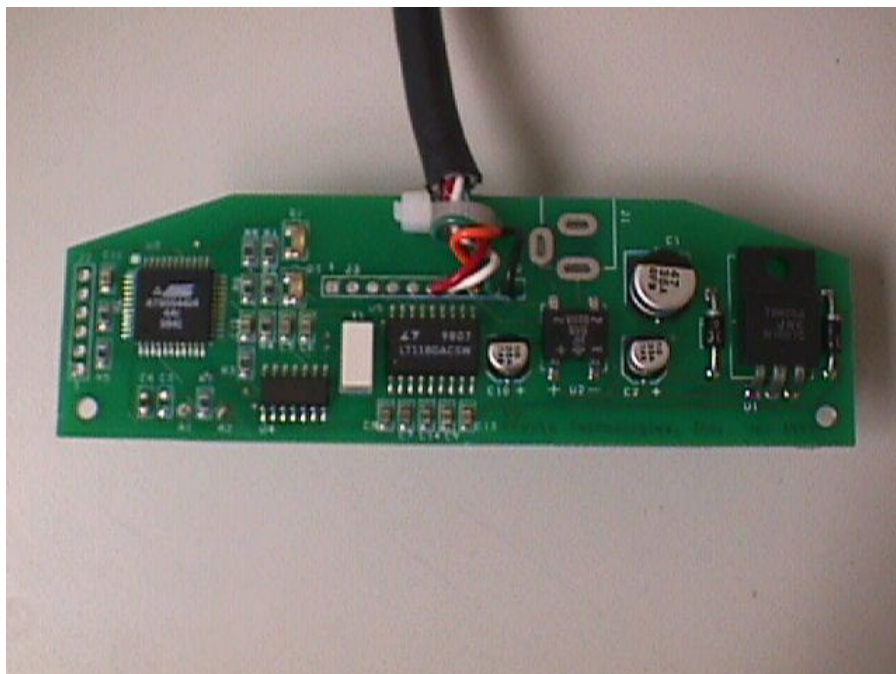


FIGURE 10: Component Side, Game Port Connection

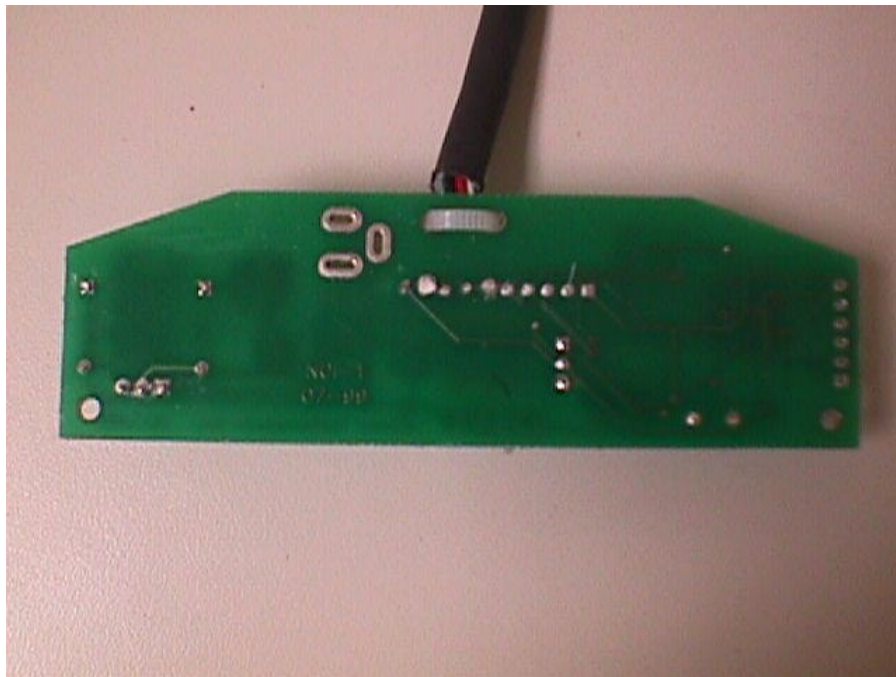


FIGURE 11: Solder Side, Game Port Connection



FIGURE 12: Game Port Connector

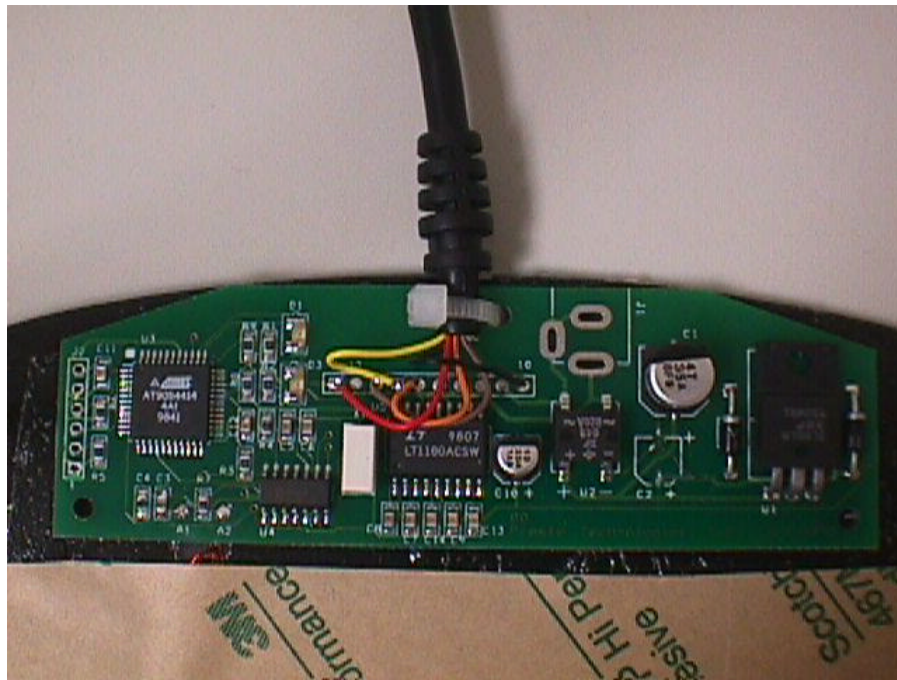


FIGURE 13: Component Side, Serial Connection

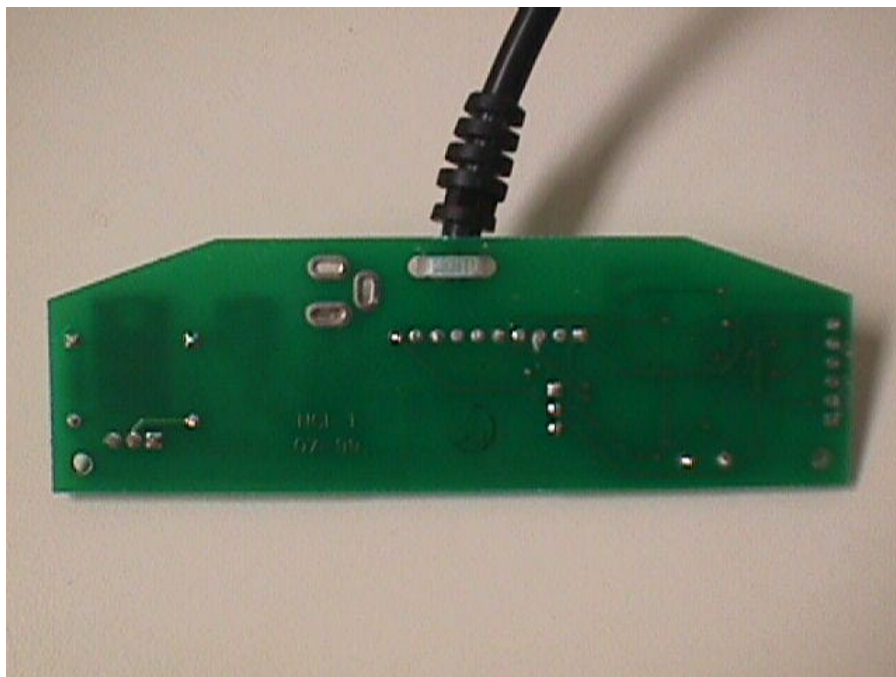


FIGURE 14: Solder Side, Serial Connection

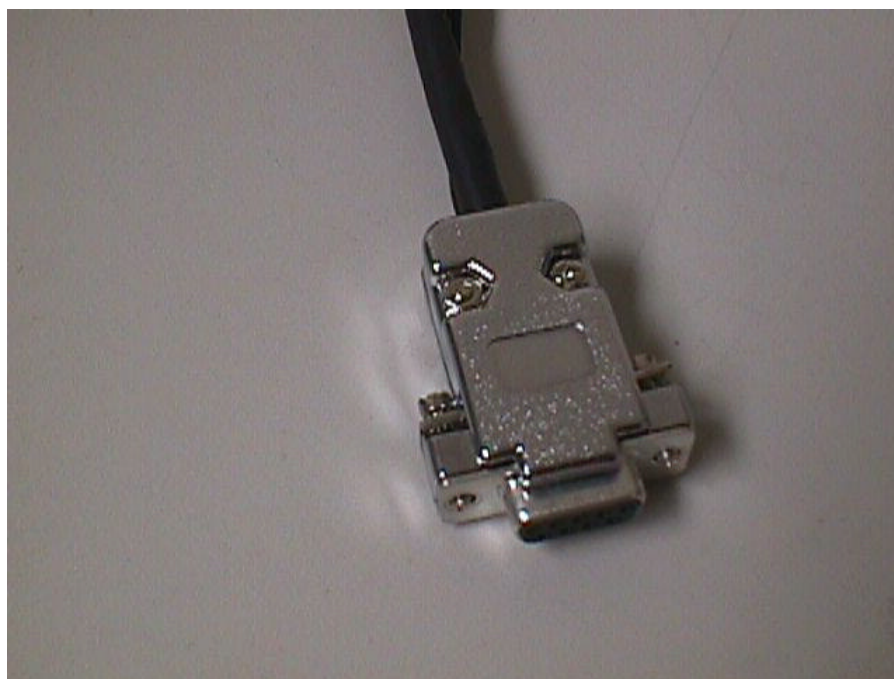


FIGURE 15: DB9 Serial Port Connector



FIGURE 16: Top Side AC/DC Wall Transformer



FIGURE 17: Bottom Side AC/DC Wall Transformer

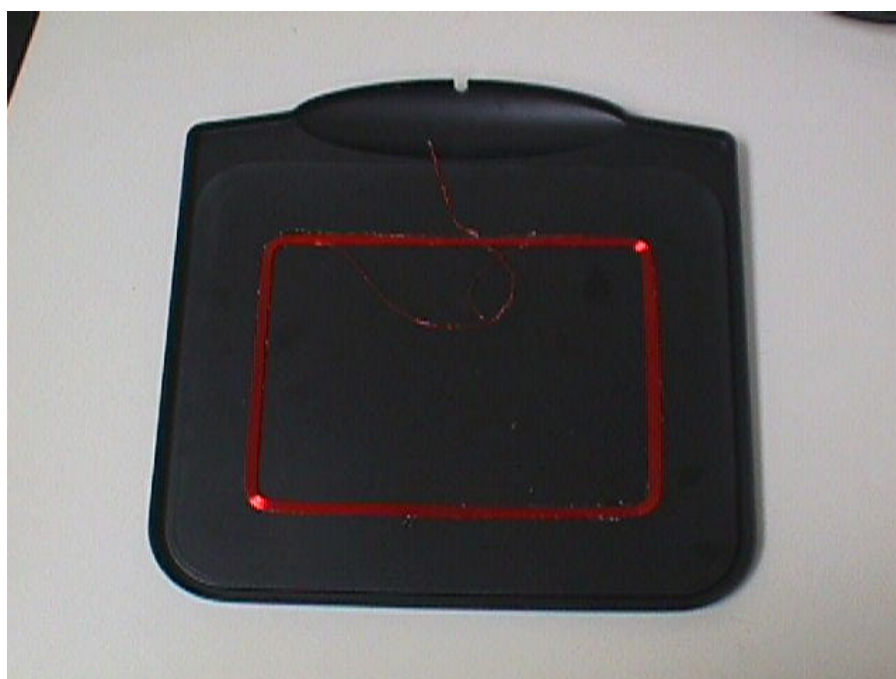


FIGURE 18: Inductive Antenna



FIGURE 19: Transponder Side A



FIGURE 20: Transponder Side B