

# Ringway Tech(Jiangsu) Co.,Ltd.

## DIGITAL PIANO

Main Model: DP-3

Serial Model: N/A

September 11, 2014




Report No.: 14020820-FCC-E

(This report supersedes NONE)



Modifications made to the product : None

This Test Report is Issued Under the Authority of:

		
Kevin Tian Compliance Engineer	Alex Liu Technical Manager	

This test report may be reproduced in full only.  
Test result presented in this test report is applicable to the representative sample only.

# EMC Test Report

To: FCC Part 15 Subpart B Class B: 2013, ANSIC 63.4: 2009

SIEMIC, INC.  
Accessing global markets



## Laboratory Introduction

SIEMIC, headquartered in the heart of Silicon Valley, with superior facilities in US and Asia, is one of the leading independent testing and certification facilities providing customers with one-stop shop services for Compliance Testing and Global Certifications.



In addition to [testing](#) and [certification](#), SIEMIC provides initial design reviews and [compliance management](#) through out a project. Our extensive experience with [China](#), [Asia Pacific](#), [North America](#), [European](#), and [international](#) compliance requirements, assures the fastest, most cost effective way to attain regulatory compliance for the [global markets](#).

### Accreditations for Conformity Assessment

Country/Region	Scope
USA	EMC , RF/Wireless , Telecom
Canada	EMC, RF/Wireless , Telecom
Taiwan	EMC, RF, Telecom , Safety
Hong Kong	RF/Wireless ,Telecom
Australia	EMC, RF, Telecom , Safety
Korea	EMI, EMS, RF , Telecom, Safety
Japan	EMI, RF/Wireless, Telecom
Singapore	EMC , RF , Telecom
Europe	EMC, RF, Telecom , Safety



## SIEMIC, Inc.

Title: EMC Test Report for DIGITAL PIANO  
Main Model: DP-3  
Serial Model: N/A  
To: FCC Part 15 Subpart B Class B: 2013, ANSI C 63.4: 2009

Report No: 14020820-FCC-E  
Issue Date: September 11, 2014  
Page: 3 of 32  
[www.siemac.com](http://www.siemac.com)

---

This page has been left blank intentionally.



**SIEMIC, Inc.**

Title: EMC Test Report for DIGITAL PIANO  
Main Model: DP-3  
Serial Model: N/A  
To: FCC Part 15 Subpart B Class B: 2013, ANSI C 63.4: 2009

Report No: 14020820-FCC-E  
Issue Date: September 11, 2014  
Page: 4 of 32  
www.siemec.com

# CONTENTS

<b>1</b>	<b>EXECUTIVE SUMMARY &amp; EUT INFORMATION .....</b>	<b>5</b>
<b>2</b>	<b>TECHNICAL DETAILS .....</b>	<b>6</b>
<b>3</b>	<b>MODIFICATION.....</b>	<b>7</b>
<b>4</b>	<b>TEST SUMMARY.....</b>	<b>8</b>
<b>5</b>	<b>MEASUREMENTS, EXAMINATION AND DERIVED RESULTS .....</b>	<b>9</b>
	<b>ANNEX A. TEST INSTRUMENT &amp; METHOD .....</b>	<b>15</b>
	<b>ANNEX B. EUT AND TEST SETUP PHOTOGRAPHS .....</b>	<b>19</b>
	<b>ANNEX C. TEST SETUP AND SUPPORTING EQUIPMENT.....</b>	<b>27</b>
	<b>ANNEX D. USER MANUAL / BLOCK DIAGRAM / SCHEMATICS / PART LIST .....</b>	<b>31</b>
	<b>ANNEX E. DECLARATION OF SIMILARITY .....</b>	<b>32</b>



**SIEMIC, INC.**

Title: EMC Test Report for DIGITAL PIANO  
Main Model: DP-3  
Serial Model: N/A  
To: FCC Part 15 Subpart B Class B: 2013, ANSI C 63.4: 2009

Report No: 14020820-FCC-E  
Issue Date: September 11, 2014  
Page: 5 of 32  
www.siemec.com

# **1 EXECUTIVE SUMMARY & EUT INFORMATION**

The purpose of this test programme was to demonstrate compliance of the Ringway Tech(Jiangsu) Co.,Ltd.. The DIGITAL PIANO and model: DP-3 against the current Stipulated Standards. The DIGITAL PIANO has demonstrated compliance with the FCC Part 15 Subpart B Class B: 2013, ANSI C 63.4: 2009.

## **EUT Information**

<b>EUT Description</b>	<b>DIGITAL PIANO</b>
<b>Main Model</b>	<b>DP-3</b>
<b>Serial Model</b>	<b>N/A</b>
<b>Input Power</b>	<b>AC/DC SWITCHING ADAPTER Model:OH-1028A1202500U-UL Input:100-240V 50/60Hz 800mA MAX Output:12V 2.5A</b>
<b>Temperature Range</b>	<b>-10°C~55°C</b>
<b>Classification Per Stipulated Test Standard</b>	<b>Class B Emission Product Per FCC Part 15 Subpart B Class B: 2013</b>

**SIEMIC, INC.**

Title: EMC Test Report for DIGITAL PIANO  
 Main Model: DP-3  
 Serial Model: N/A  
 To: FCC Part 15 Subpart B Class B: 2013, ANSI C 63.4: 2009

Report No: 14020820-FCC-E  
 Issue Date: September 11, 2014  
 Page: 6 of 32  
 www.siemic.com

## 2 TECHNICAL DETAILS

<b>Purpose</b>	<b>Compliance testing of DIGITAL PIANO with stipulated standard</b>
<b>Applicant / Client</b>	<b>Ringway Tech(Jiangsu) Co.,Ltd. No. 101 West Hanjiang Road, Changzhou,Jiangsu, China</b>
<b>Manufacturer</b>	<b>Ringway Tech(Jiangsu) Co.,Ltd. No. 101 West Hanjiang Road, Changzhou,Jiangsu, China</b>
<b>Laboratory performing the tests</b>	<b>SIEMIC (Nanjing-China) Laboratories NO.2-1, Longcang Dadao, Yuhua Economic Development Zone,Nanjing, China Tel:+86(25)86730128/86730129 Fax:+86(25)86730127 Email: China@siemic.com.cn</b>
<b>Test report reference number</b>	<b>14020820-FCC-E</b>
<b>Date EUT received</b>	<b>August 13, 2014</b>
<b>Standard applied</b>	<b>FCC Part 15 Subpart B Class B: 2013, ANSI C 63.4: 2009</b>
<b>Dates of test</b>	<b>August 26 to September 10, 2014</b>
<b>No of Units</b>	<b>#1</b>
<b>Equipment Category</b>	<b>Class B Emission Product</b>
<b>Trade Name</b>	<b>N/A</b>
<b>Highest Operated Frequency (ies)</b>	<b>12MHz</b>
<b>Port/Connectors</b>	<b>USB TO HOST Port, MIDI OUT Port, Power Port, Aux in Port, Headphones 1&amp;2 Port, Line Out Port</b>
<b>FCC ID</b>	<b>OCDDP-3</b>



**SIEMIC, Inc.**

Title: EMC Test Report for DIGITAL PIANO  
Main Model: DP-3  
Serial Model: N/A  
To: FCC Part 15 Subpart B Class B: 2013, ANSI C 63.4: 2009

Report No: 14020820-FCC-E  
Issue Date: September 11, 2014  
Page: 7 of 32  
[www.sieminc.com](http://www.sieminc.com)

## **3 MODIFICATION**

**NONE**

## 4 TEST SUMMARY

The product was tested in accordance with the following specifications.  
 All testing has been performed according to below product classification:

### Class B Emission Product

#### Test Results Summary

Emissions			
Test Standard	Description	Product Class	Pass / Fail
FCC Part 15 Subpart B Class B: 2013, ANSI C 63.4: 2009	Conducted Emissions	See Above	Pass
FCC Part 15 Subpart B Class B: 2013, ANSI C 63.4: 2009	Radiated Emissions	See Above	Pass

All measurement uncertainty is not taken into consideration for all presented test result.





## **5 MEASUREMENTS, EXAMINATION AND DERIVED RESULTS**

### **5.1 Conducted Emissions Test Result**

*Note:*

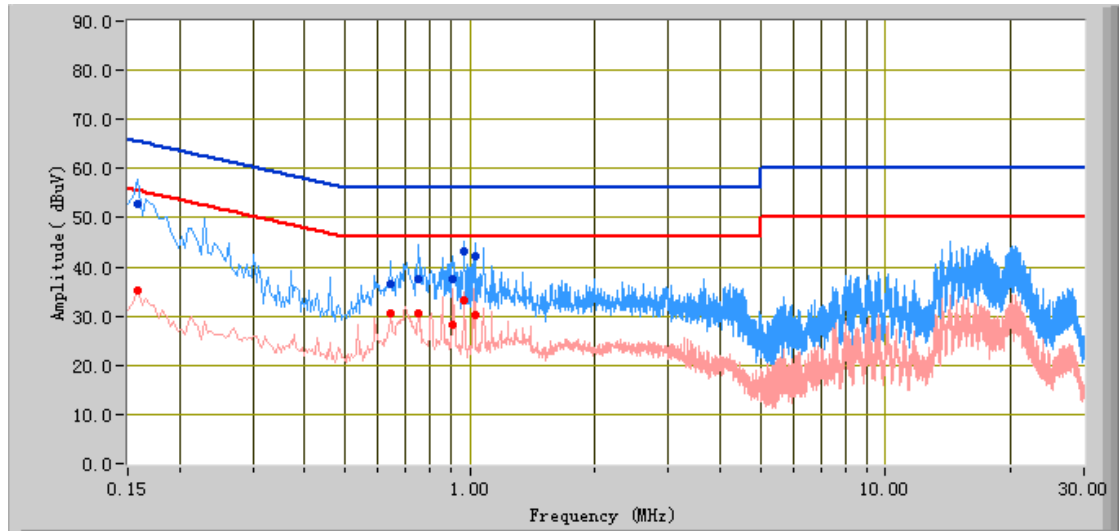
1. All possible modes of operation were investigated. Only the 6 worst case emissions measured, using the correct CISPR and Average detectors, are reported. All other emissions were relatively insignificant.
2. A "-ve" margin indicates a PASS as it refers to the margin present below the limit line at the particular frequency.
3. Conducted Emissions Measurement Uncertainty  
All test measurements carried out are traceable to national standards. The uncertainty of the measurement at a confidence level of approximately 95% (in the case where distributions are normal), with a coverage factor of 2, in the range 9kHz – 30MHz (Average & Quasi-peak) is  $\pm 3.86\text{dB}$ .
4. Environmental Conditions  

Temperature	24°C
Relative Humidity	50%
Atmospheric Pressure	1009 mbar
5. Test date : August 26, 2014  
Tested By : Kevin Tian

**Test Result: Pass**

<b>Test Mode:</b>	<b>Normal working</b>
-------------------	-----------------------

**Peak Detector**        **Quasi Peak Limit**      
**Average Detector**        **Average Limit**    



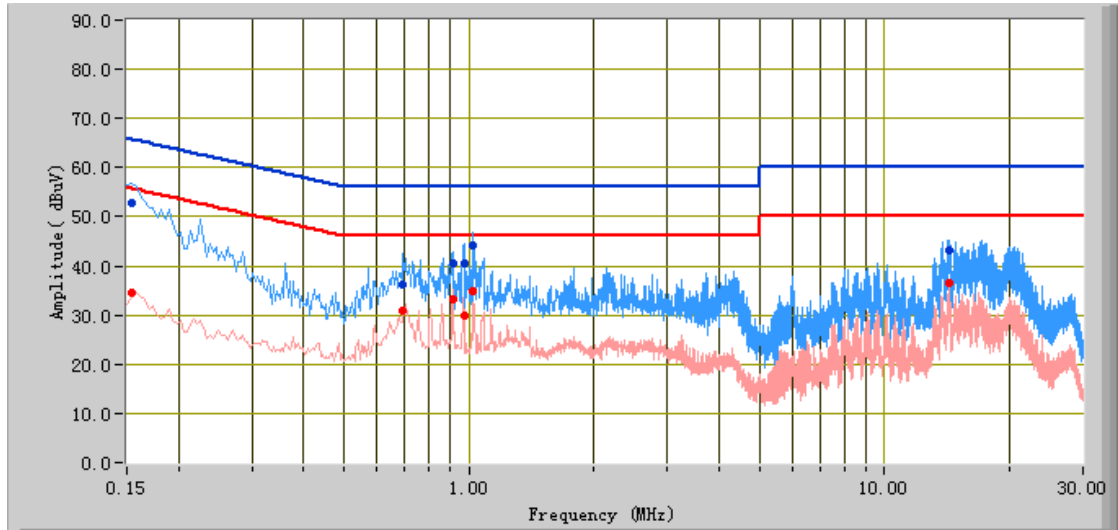
**Test Data**

**Phase Line Plot at 120V AC, 60Hz**

Frequency (MHz)	Quasi Peak (dBµV)	Limit (dBµV)	Margin (dB)	Average (dBµV)	Limit (dBµV)	Margin (dB)	Factors (dB)
0.16	52.72	65.57	-12.85	35.19	55.57	-20.38	12.11
0.97	43.15	56.00	-12.85	33.36	46.00	-12.64	10.71
1.03	42.04	56.00	-13.96	30.19	46.00	-15.81	10.69
0.75	37.38	56.00	-18.62	30.68	46.00	-15.32	10.88
0.91	37.64	56.00	-18.36	28.30	46.00	-17.70	10.76
0.65	36.62	56.00	-19.38	30.48	46.00	-15.52	10.97

<b>Test Mode:</b>	<b>Normal working</b>
-------------------	-----------------------

**Peak Detector**       **Quasi Peak Limit**        
**Average Detector**       **Average Limit**      



**Test Data**

**Phase Neutral Plot at 120V AC, 60Hz**

Frequency (MHz)	Quasi Peak (dBµV)	Limit (dBµV)	Margin (dB)	Average (dBµV)	Limit (dBµV)	Margin (dB)	Factors (dB)
0.15	52.74	65.78	-13.04	34.60	55.78	-21.18	12.15
1.02	44.33	56.00	-11.67	35.00	46.00	-11.00	10.70
0.97	40.57	56.00	-15.43	29.86	46.00	-16.14	10.72
0.91	40.54	56.00	-15.46	33.36	46.00	-12.64	10.76
0.69	36.33	56.00	-19.67	30.77	46.00	-15.23	10.92
14.29	43.19	60.00	-16.81	36.45	50.00	-13.55	11.36

## **5.2 Radiated Emissions Test Result**

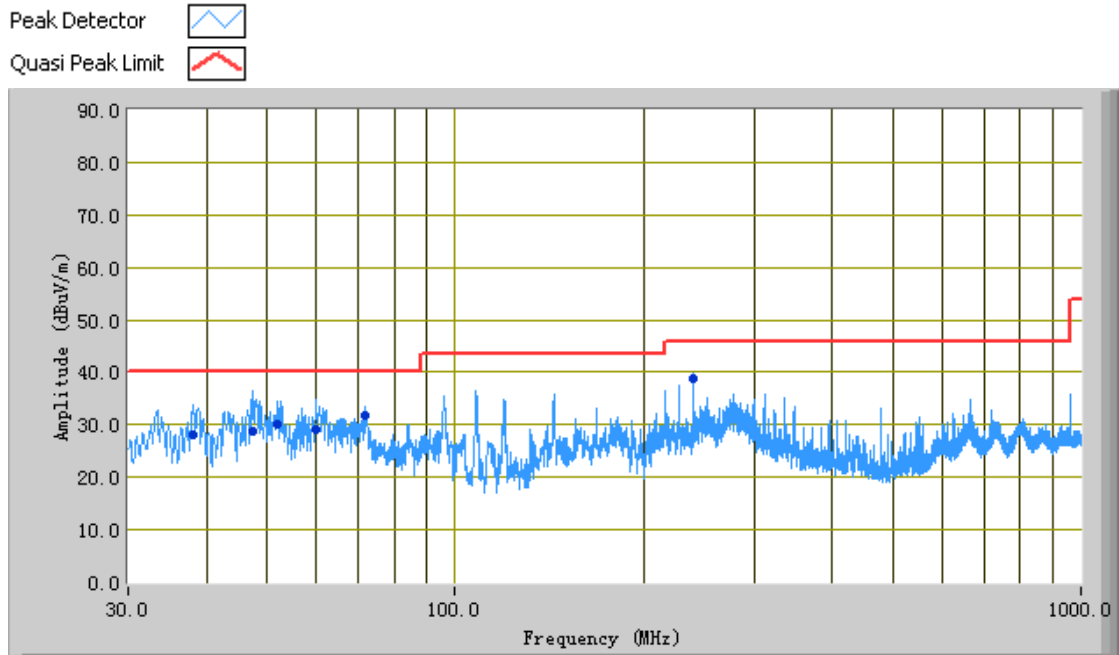
*Note:*

1. All possible modes of operation were investigated. Only the 6 worst case emissions measured, using the correct CISPR detectors, are reported. All other emissions were relatively insignificant.
2. A "-ve" margin indicates a PASS as it refers to the margin present below the limit line at the particular frequency.
3. Radiated Emissions Measurement Uncertainty  
All test measurements carried out are traceable to national standards. The uncertainty of the measurement at a confidence level of approximately 95% (in the case where distributions are normal), with a coverage factor of 2, in the range 30MHz – 1GHz (QP only @ 3m & 10m) is +5.6dB/-4.5dB (for EUT s < 0.5m X 0.5m X 0.5m), in the range 1GHz – 6GHz (PK & AV only @3m) is +4dB/-4dB (for EUT s < 0.5m X 0.5m X 0.5m).
4. Environmental Conditions                      Temperature                      24°C  
Relative Humidity                      50%  
Atmospheric Pressure                      1009mbar
5. Test date: September 10, 2014  
Tested By: Kevin Tian

**Test Result: Pass**

<b>Test Mode:</b>	<b>Normal working</b>
-------------------	-----------------------

*Below 1GHz*





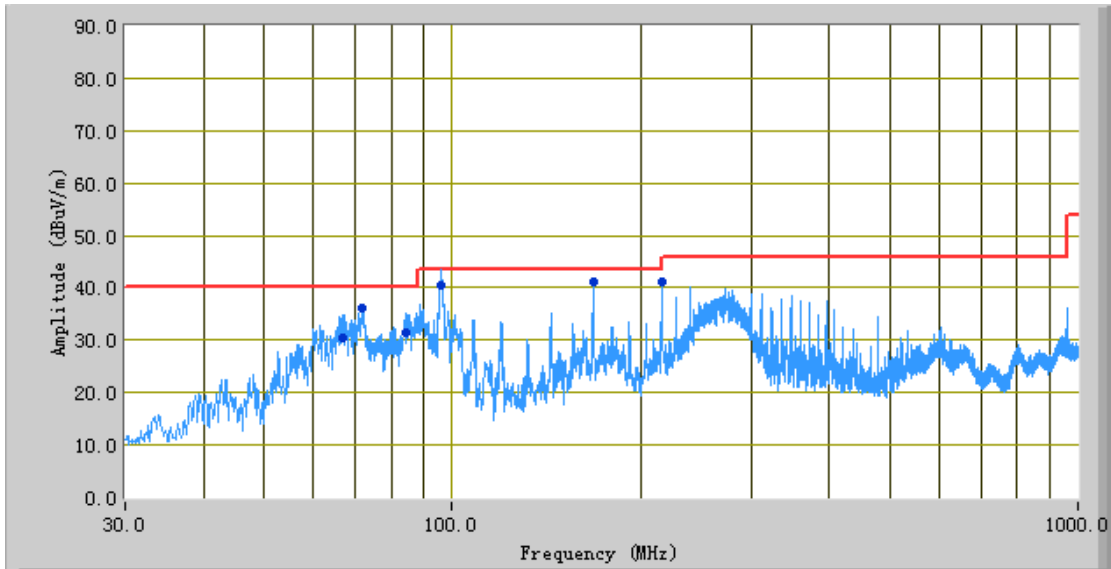
**Test Data**

**Vertical Polarity Plot at 3m**

Frequency (MHz)	Quasi Peak (dBµV/m)	Azimuth	Polarity (H/V)	Height (cm)	Factors (dB)	Limit (dBµV/m)	Margin (dB)
47.39	28.65	353.00	V	161.00	-33.11	40.00	-11.35
59.98	29.05	38.00	V	123.00	-37.39	40.00	-10.95
52.10	30.04	256.00	V	106.00	-35.11	40.00	-9.96
240.02	38.84	280.00	V	103.00	-29.90	46.00	-7.16
38.10	28.22	1.00	V	173.00	-28.32	40.00	-11.78
71.98	31.88	287.00	V	301.00	-37.37	40.00	-8.12

<b>Test Mode:</b>	<b>Normal working</b>
-------------------	-----------------------

Peak Detector   
 Quasi Peak Limit 



**Test Data**

**Horizontal Polarity Plot at 3m**

Frequency (MHz)	Quasi Peak (dBµV/m)	Azimuth	Polarity (H/V)	Height (cm)	Factors (dB)	Limit (dBµV/m)	Margin (dB)
95.84	40.43	181.00	H	300.00	-33.64	43.50	-3.07
216.01	41.10	84.00	H	152.00	-30.32	43.50	-2.40
168.08	41.30	246.00	H	145.00	-31.49	43.50	-2.20
72.01	36.24	354.00	H	374.00	-37.89	40.00	-3.76
84.21	31.29	359.00	H	235.00	-36.51	40.00	-8.71
67.00	30.53	360.00	H	380.00	-37.92	40.00	-9.47

*Note: the highest frequency of the internal sources of the EUT is less than 108MHz, so the measurement shall only be made up to 1GHz.*

**SIEMIC, INC.**

Title: EMC Test Report for DIGITAL PIANO  
 Main Model: DP-3  
 Serial Model: N/A  
 To: FCC Part 15 Subpart B Class B: 2013, ANSI C 63.4: 2009

Report No: 14020820-FCC-E  
 Issue Date: September 11, 2014  
 Page: 15 of 32  
 www.sieminc.com

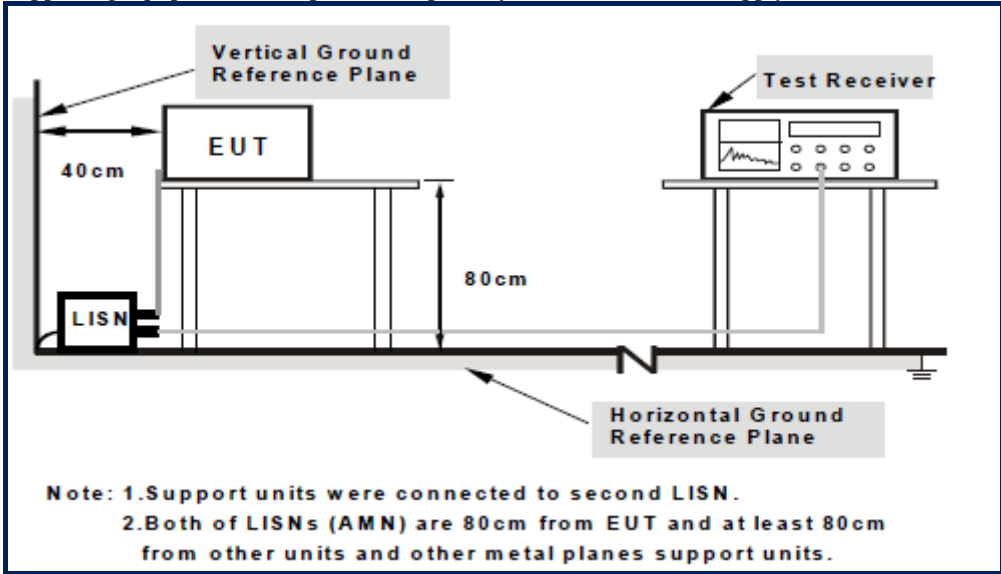
**Annex A. TEST INSTRUMENT & METHOD****Annex A.i. TEST INSTRUMENTATION & GENERAL PROCEDURES**

Instrument	Model	Serial #	Calibration Date	Calibration Due Date
<b>AC Line Conducted Emissions</b>				
R&S EMI Test Receiver	ESPI3	101216	09/27/2013	09/26/2014
ROHDE&SCHWARZ V-LISN	ESH3-Z5	838979/005	09/27/2013	09/26/2014
Com-Power LISN	LI-115	241091	05/25/2014	05/24/2015
Com-Power Transient Limiter	LIT-153	531021	09/27/2013	09/26/2014
SIEMIC Labview Conducted Emissions software	V1.0	N/A	N/A	N/A
<b>Radiated Emissions</b>				
Hp Spectrum Analyzer	8563E	3821A09023	09/27/2013	09/26/2014
R&S EMI Receiver	ESPI3	101216	09/27/2013	09/26/2014
Antenna (30MHz~6GHz)	JB6	A121411	04/15/2014	04/14/2015
ETS-Lindgren Antenna (1 ~18GHz)	3115	N/A	10/09/2013	10/08/2014
A-INFOMW Antenna (1 ~18GHz)	JXTXLB-10180	J2031081120092	10/09/2013	10/08/2014
Horn Antenna (18~40GHz)	AH-840	101013	04/22/2014	04/22/2015
Microwave Pre-Amp (18~40GHz)	PA-840	181250	05/29/2014	05/28/2015
Hp Agilent Pre-Amplifier	8447F	1937A01160	10/27/2013	10/26/2014
MITEQ Pre-Amplifier (0.1 ~ 18GHz)	AMF-7D-00101800-30-10P	1451709	10/27/2013	10/26/2014
Chamber	3m	N/A	04/13/2014	04/12/2015
SIEMIC Labview Radiated Emissions software	V1.0	N/A	N/A	N/A

**Annex A.ii. CONDUCTED EMISSIONS TEST DESCRIPTION**

**Test Set-up**

1. The EUT and supporting equipment were set up in accordance with the requirements of the standard on top of a 1.5m x 1m x 0.8m high, non-metallic table, as shown in Annex B.
2. The power supply for the EUT was fed through a 50Ω/50μH EUT LISN, connected to filtered mains.
3. The RF OUT of the EUT LISN was connected to the EMI test receiver via a low-loss coaxial cable.
4. All other supporting equipments were powered separately from another main supply.



For the actual test configuration, please refer to the related item – Photographs of the Test Configuration1

**Test Method**

1. The EUT was switched on and allowed to warm up to its normal operating condition.
2. A scan was made on the NEUTRAL line (for AC mains) or Earth line (for DC power) over the required frequency range using an EMI test receiver.
3. High peaks, relative to the limit line, were then selected.
4. The EMI test receiver was then tuned to the selected frequencies and the necessary measurements made with a receiver bandwidth setting of 10kHz. For FCC tests, only Quasi-peak measurements were made; while for CISPR/EN tests, both Quasi-peak and Average measurements were made.
5. Steps 2 to 4 were then repeated for the LIVE line (for AC mains) or DC line (for DC power).

**Sample Calculation Example**

At 20MHz	limit = 250μV = 47.96dBμV
Transducer factor of LISN, pulse limiter & cable loss at 20MHz = 11.20dB	
Q-P reading obtained directly from EMI Receiver = 40.00dBμV (Calibrated for system losses)	
Therefore, Q-P margin = 40.00-47.96 = -7.96	i.e. <b>7.96 dB below limit</b>



**Annex A.iii. RADIATED EMISSIONS TEST DESCRIPTION**

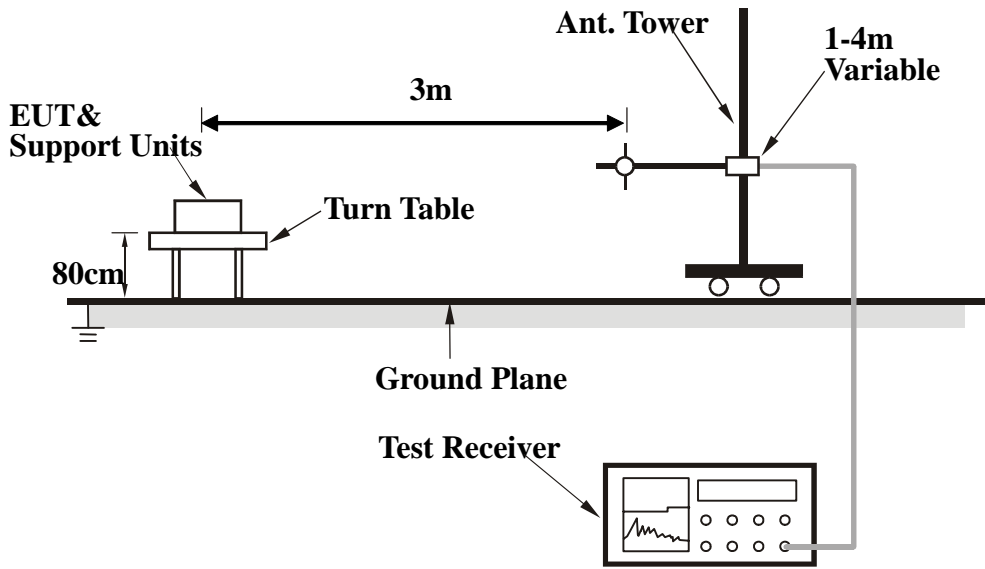
**EUT Characterisation**

EUT characterisation, over the frequency range from 30MHz to 10<sup>th</sup> Harmonic, was done in order to minimise radiated emissions testing time while still maintaining high confidence in the test results.

The EUT was placed in the chamber, at a height of about 0.8m on a turntable. Its radiated emissions frequency profile was observed, using a spectrum analyzer /receiver with the appropriate broadband antenna placed 3m away from the EUT. Radiated emissions from the EUT were maximised by rotating the turntable manually, changing the antenna polarisation and manipulating the EUT cables while observing the frequency profile on the spectrum analyzer / receiver. Frequency points at which maximum emissions occurred; clock frequencies and operating frequencies were then noted for the formal radiated emissions test at the Open Area Test Site (OATS) or 3m EMC chamber.

**Test Set-up**

1. The EUT and supporting equipment were set up in accordance with the requirements of the standard on top of a 1.5mX1.0mX0.8m high, non-metallic table.
2. The filtered power supply for the EUT and supporting equipment were tapped from the appropriate power sockets located on the turntable.
3. The relevant broadband antenna was set at the required test distance away from the EUT and supporting equipment boundary.



For the actual test configuration, please refer to the related item – Photographs of the Test Configuration2

**Test Method**

The following procedure was performed to determine the maximum emission axis of EUT:

1. With the receiving antenna is H polarization, rotate the EUT in turns with three orthogonal axes to determine the axis of maximum emission.
2. With the receiving antenna is V polarization, rotate the EUT in turns with three orthogonal axes to determine the axis of maximum emission.
3. Compare the results derived from above two steps. So, the axis of maximum emission from EUT was determined and the configuration was used to perform the final measurement.

**Final Radiated Emission Measurement**

1. Setup the configuration according to figure 1. Turn on EUT and make sure that it is in normal function.
2. For emission frequencies measured below 1GHz, a pre-scan is performed in a shielded chamber to determine the accurate frequencies of higher emissions will be checked on an open test site. As the same purpose, for emission frequencies measured above 1GHz, a pre-scan also be performed with a 1 meter measuring distance before final test.
3. For emission frequencies measured below and above 1GHz, set the spectrum analyzer on a 100kHz and 1MHz resolution bandwidth respectively for each frequency measured in step 2.
4. The search antenna is to be raised and lowered over a range from 1 to 4 meters in horizontally polarized orientation. Position the highness when the highest value is indicated on spectrum analyzer, then change the orientation of EUT on test table over a range from 0° to 360° with a speed as slow as possible, and keep the azimuth that highest emission is indicated on the spectrum analyzer. Vary the antenna position again and record the highest value as a final reading.
5. Repeat step 4 until all frequencies need to be measured was complete.
6. Repeat step 5 with search antenna in vertical polarized orientations.

During the radiated emission test, the Spectrum Analyzer was set with the following configurations:

Frequency Band (MHz)	Function	Resolution bandwidth	Video Bandwidth
30 to 1000	Peak	120kHz	100kHz
Above 1000	Peak	1MHz	1MHz
	Average	1MHz	10Hz

**Sample Calculation Example**

The field strength is calculated by adding the Antenna Factor and Cable Factor, and subtracting the Amplifier Gain (if any) from the measured reading. For the limit is employed average value, therefore the peak value can be transferred to average value by subtracting the duty factor. The basic equation with a sample calculation is as follows:

$$\text{Peak} = \text{Reading} + \text{Corrected Factor}$$

where

$$\text{Corr. Factor} = \text{Antenna Factor} + \text{Cable Factor} - \text{Amplifier Gain (if any)}$$

And the average value is

$$\text{Average} = \text{Peak Value} + \text{Duty Factor or}$$

$$\text{Set RBW} = 1\text{MHz}, \text{VBW} = 10\text{Hz}.$$

Note:

If the measured frequencies are fall in the restricted frequency band, the limit employed must be quasi peak value when frequencies are below or equal to 1GHz. And the measuring instrument is set to quasi peak detector function.



**SIEMIC, Inc.**

Title: EMC Test Report for DIGITAL PIANO  
Main Model: DP-3  
Serial Model: N/A  
To: FCC Part 15 Subpart B Class B: 2013, ANSI C 63.4: 2009

Report No: 14020820-FCC-E  
Issue Date: September 11, 2014  
Page: 19 of 32  
www.sieminc.com

## **Annex B. EUT AND TEST SETUP PHOTOGRAPHS**

### **Annex B.i. Photograph 1: EUT External Photo**



Front View of EUT



Rear View of EUT



**SIEMIC, Inc.**

Title: EMC Test Report for DIGITAL PIANO  
Main Model: DP-3  
Serial Model: N/A  
To: FCC Part 15 Subpart B Class B: 2013, ANSI C 63.4: 2009

Report No: 14020820-FCC-E  
Issue Date: September 11, 2014  
Page: 20 of 32  
www.siemac.com



Left View of EUT



Right View of EUT



**SIEMIC, Inc.**

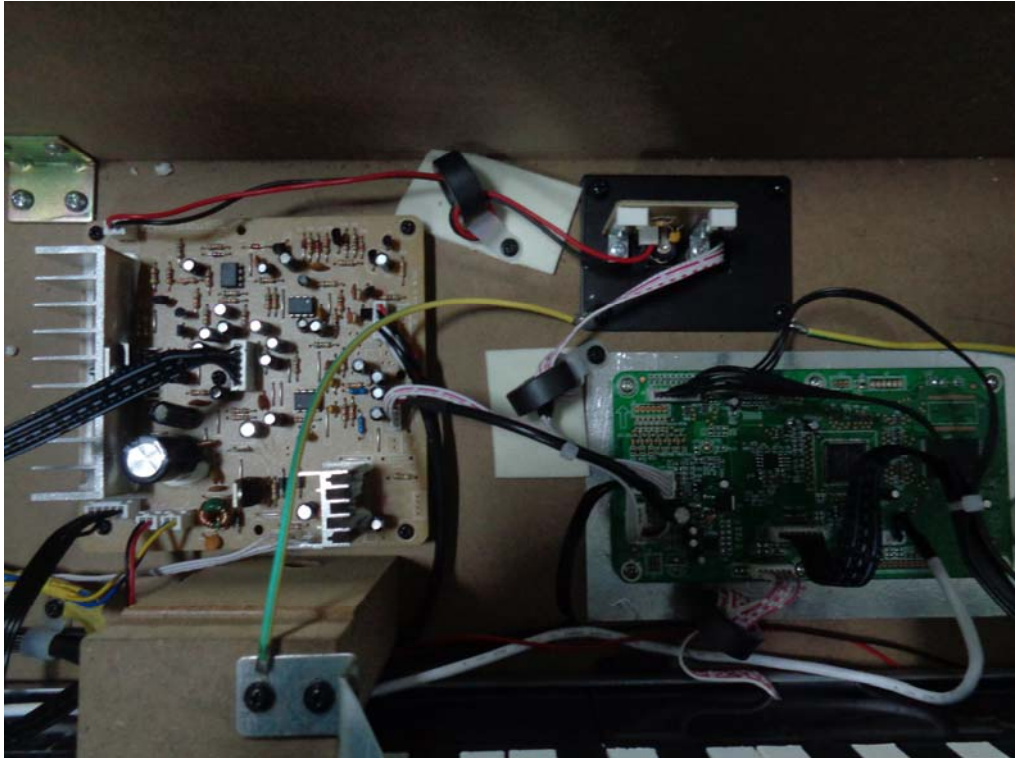
Title: EMC Test Report for DIGITAL PIANO  
Main Model: DP-3  
Serial Model: N/A  
To: FCC Part 15 Subpart B Class B: 2013, ANSI C 63.4: 2009

Report No: 14020820-FCC-E  
Issue Date: September 11, 2014  
Page: 21 of 32  
www.siemec.com

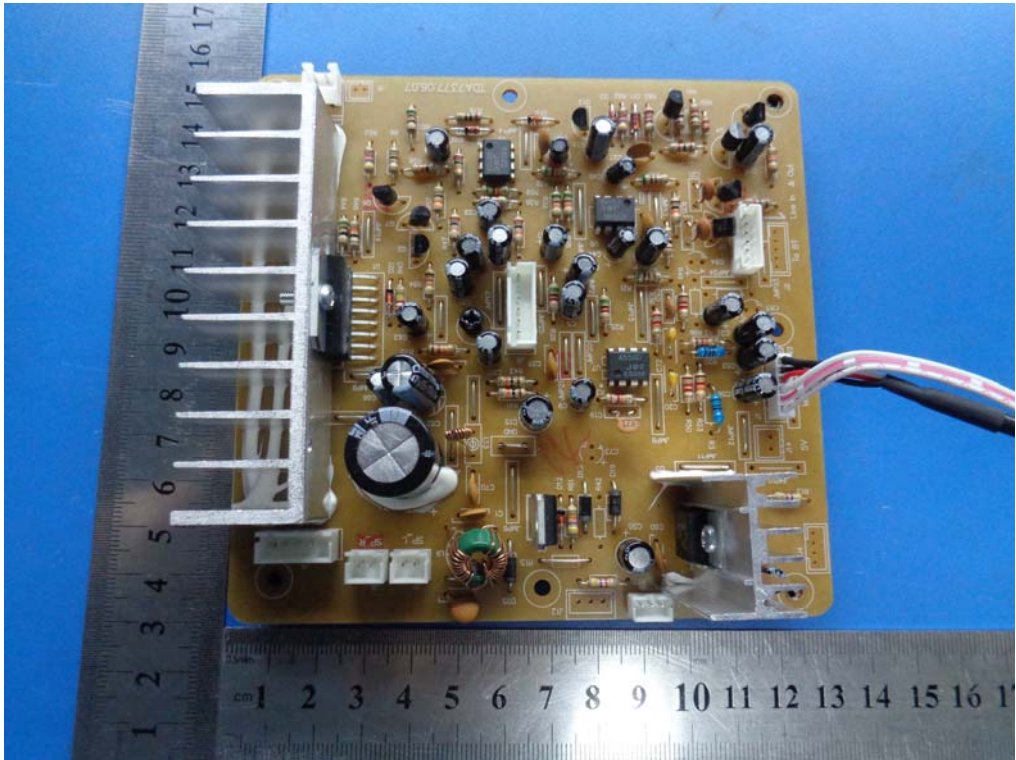


EUT Port – Front View

**Annex B.ii. Photograph 2: EUT Internal Photo**



Uncover- Front View



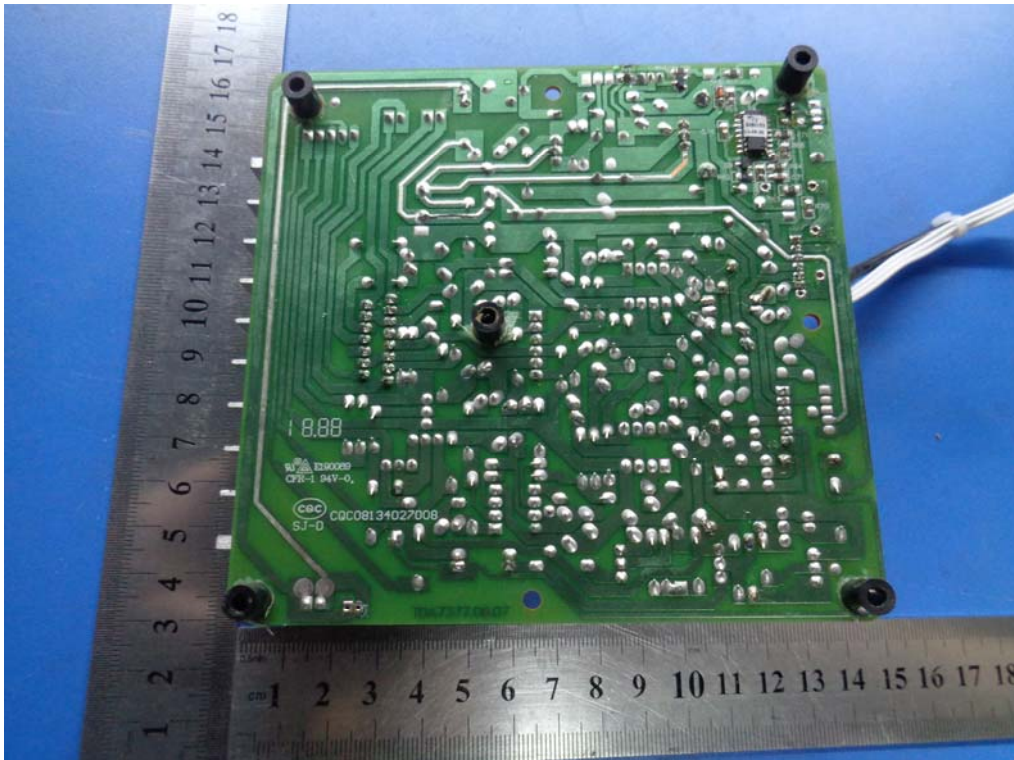
EUT PCB 1- Front View



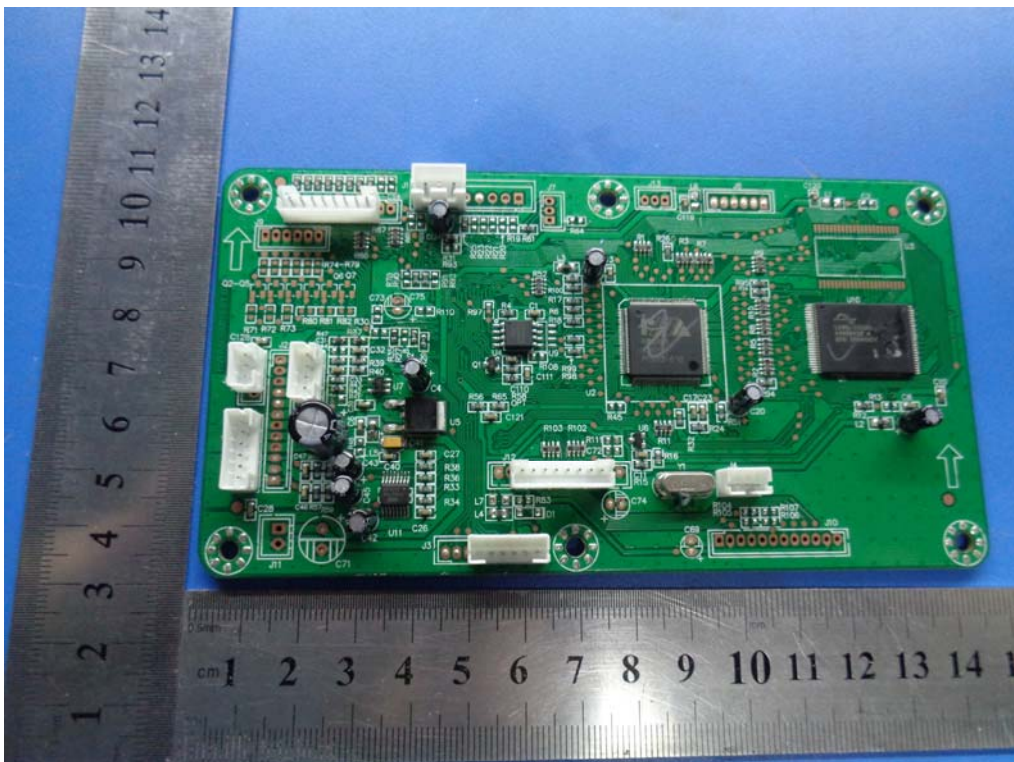
**SIEMIC, INC.**

Title: EMC Test Report for DIGITAL PIANO  
Main Model: DP-3  
Serial Model: N/A  
To: FCC Part 15 Subpart B Class B: 2013, ANSI C 63.4: 2009

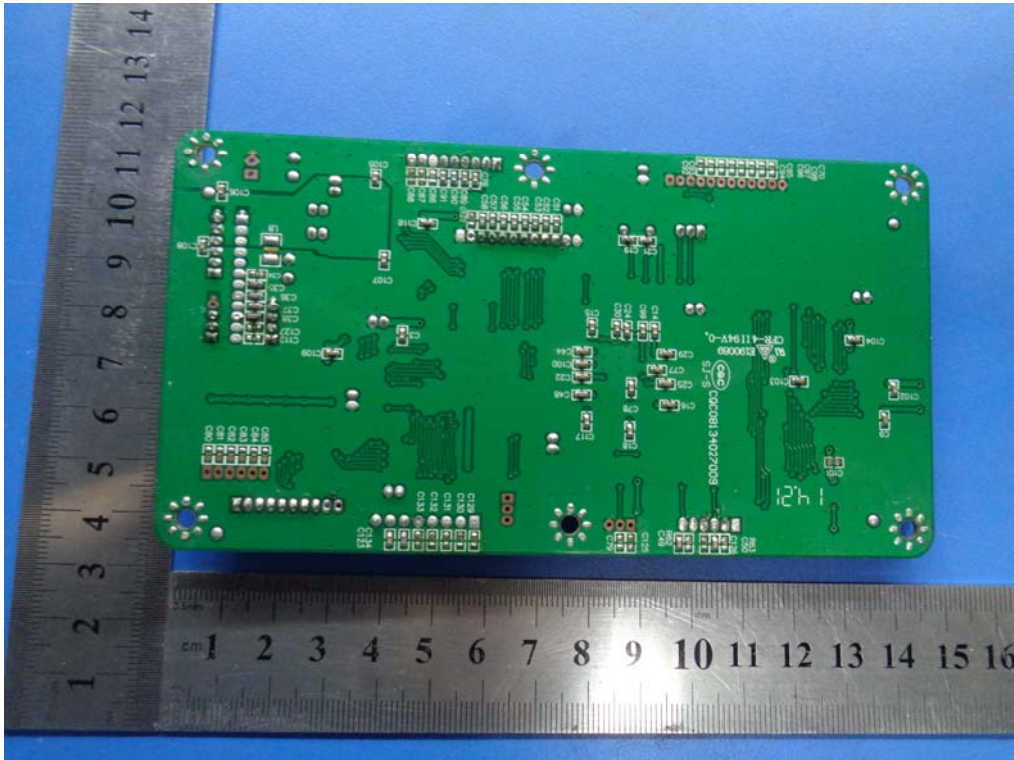
Report No: 14020820-FCC-E  
Issue Date: September 11, 2014  
Page: 23 of 32  
www.siemec.com



EUT PCB 1- Rear View



EUT PCB 2- Front View



EUT PCB 2- Rear View





**SIEMIC, Inc.**

Title: EMC Test Report for DIGITAL PIANO  
Main Model: DP-3  
Serial Model: N/A  
To: FCC Part 15 Subpart B Class B: 2013, ANSI C 63.4: 2009

Report No: 14020820-FCC-E  
Issue Date: September 11, 2014  
Page: 25 of 32  
www.siemec.com

**Annex B.iii. Photograph 3: Test Setup Photo**



Conducted Emissions Setup Front View



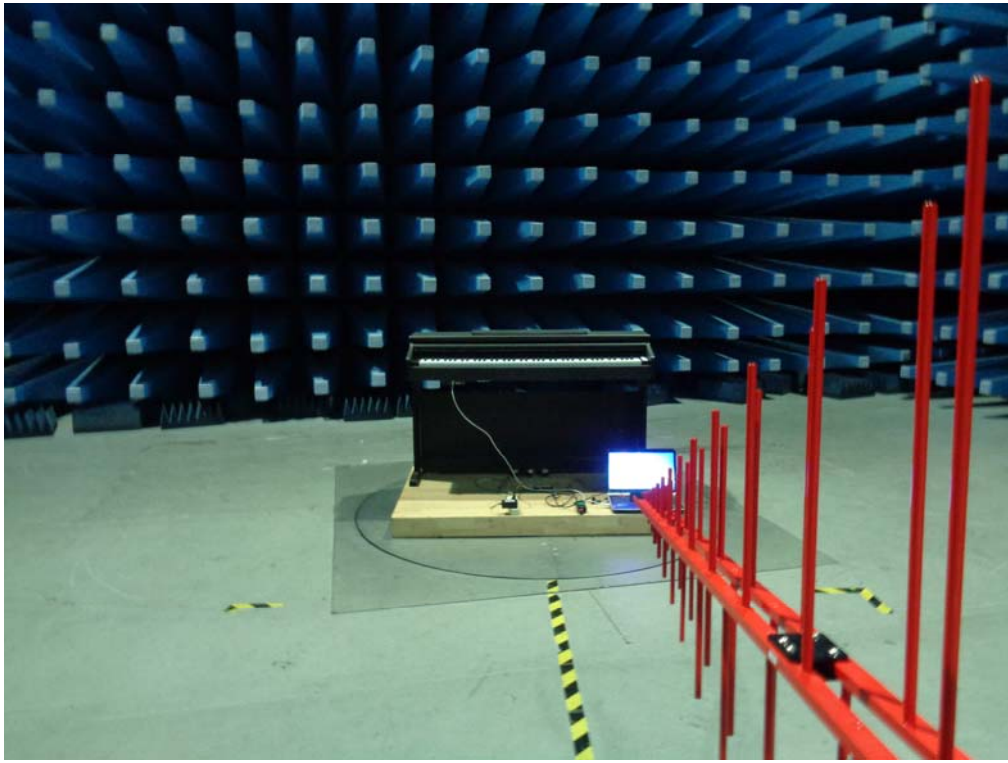
Conducted Emissions Setup Side View



**SIEMIC, Inc.**

Title: EMC Test Report for DIGITAL PIANO  
Main Model: DP-3  
Serial Model: N/A  
To: FCC Part 15 Subpart B Class B: 2013, ANSI C 63.4: 2009

Report No: 14020820-FCC-E  
Issue Date: September 11, 2014  
Page: 26 of 32  
www.siemec.com



Radiated Emissions Setup Below 1GHz Front View

**SIEMIC, INC.**

Title: EMC Test Report for DIGITAL PIANO  
Main Model: DP-3  
Serial Model: N/A  
To: FCC Part 15 Subpart B Class B: 2013, ANSI C 63.4: 2009

Report No: 14020820-FCC-E  
Issue Date: September 11, 2014  
Page: 27 of 32  
www.sieminc.com

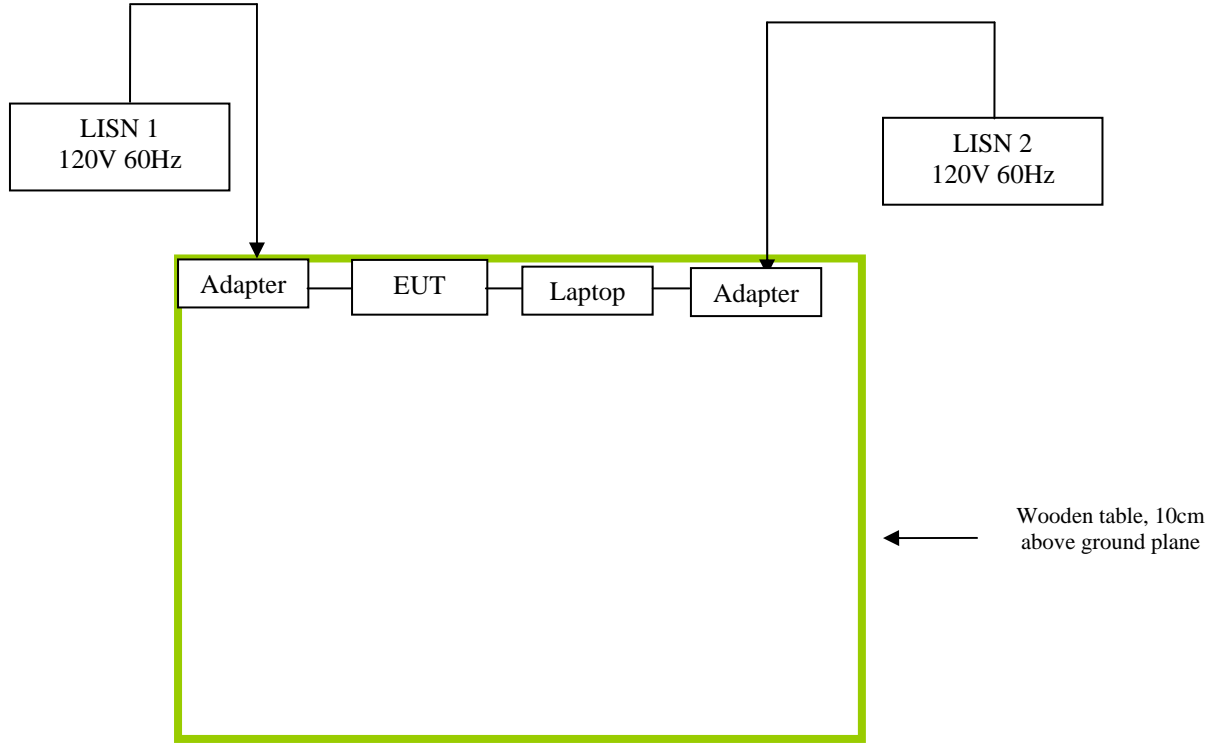
**Annex C. TEST SETUP AND SUPPORTING EQUIPMENT****EUT TEST CONDITIONS****Annex C. i. SUPPORTING EQUIPMENT DESCRIPTION**

The following is a description of supporting equipment and details of cables used with the EUT.

<b>Equipment Description (Including Brand Name)</b>	<b>Model &amp; Serial Number</b>	<b>Cable Description (List Length, Type &amp; Purpose)</b>
Acer Laptop	ZQT & N/A	N/A

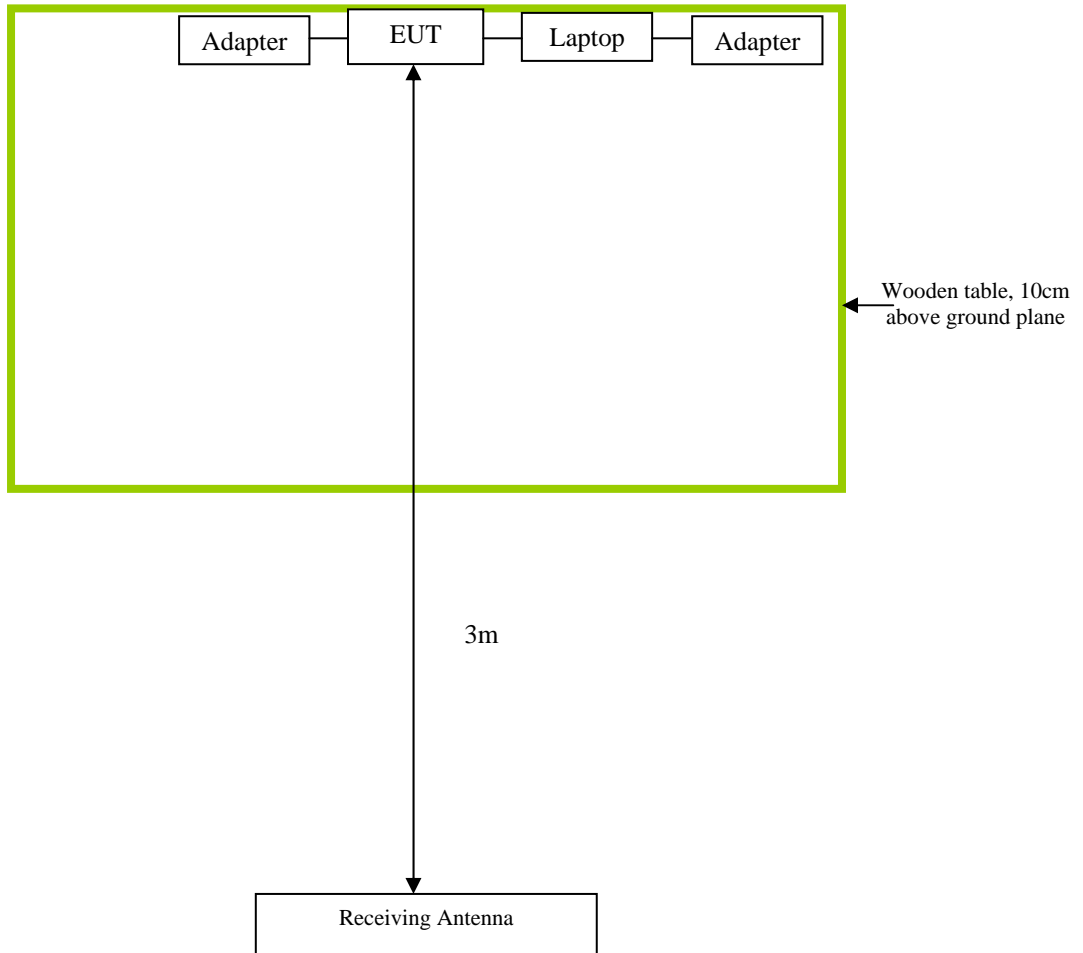


### Block Configuration Diagram for Conducted Emissions





### Block Configuration Diagram for Radiated Emissions





**SIEMIC, Inc.**

Title: EMC Test Report for DIGITAL PIANO  
Main Model: DP-3  
Serial Model: N/A  
To: FCC Part 15 Subpart B Class B: 2013, ANSI C 63.4: 2009

Report No: 14020820-FCC-E  
Issue Date: September 11, 2014  
Page: 30 of 32  
www.sieminc.com

**Annex C.ii. EUT OPERATING CONDITIONS**

The following is the description of how the EUT is exercised during testing.

Test	Description Of Operation
Emissions Testing	Normal Working



**SIEMIC, Inc.**

Title: EMC Test Report for DIGITAL PIANO  
Main Model: DP-3  
Serial Model: N/A  
To: FCC Part 15 Subpart B Class B: 2013, ANSI C 63.4: 2009

Report No: 14020820-FCC-E  
Issue Date: September 11, 2014  
Page: 31 of 32  
www.siemac.com

## **Annex D. USER MANUAL / BLOCK DIAGRAM / SCHEMATICS / PART LIST**

**Please see attachment**



**SIEMIC, Inc.**

Title: EMC Test Report for DIGITAL PIANO  
Main Model: DP-3  
Serial Model: N/A  
To: FCC Part 15 Subpart B Class B: 2013, ANSI C 63.4: 2009

Report No: 14020820-FCC-E  
Issue Date: September 11, 2014  
Page: 32 of 32  
[www.siemec.com](http://www.siemec.com)

## **Annex E. DECLARATION OF SIMILARITY**

N/A