

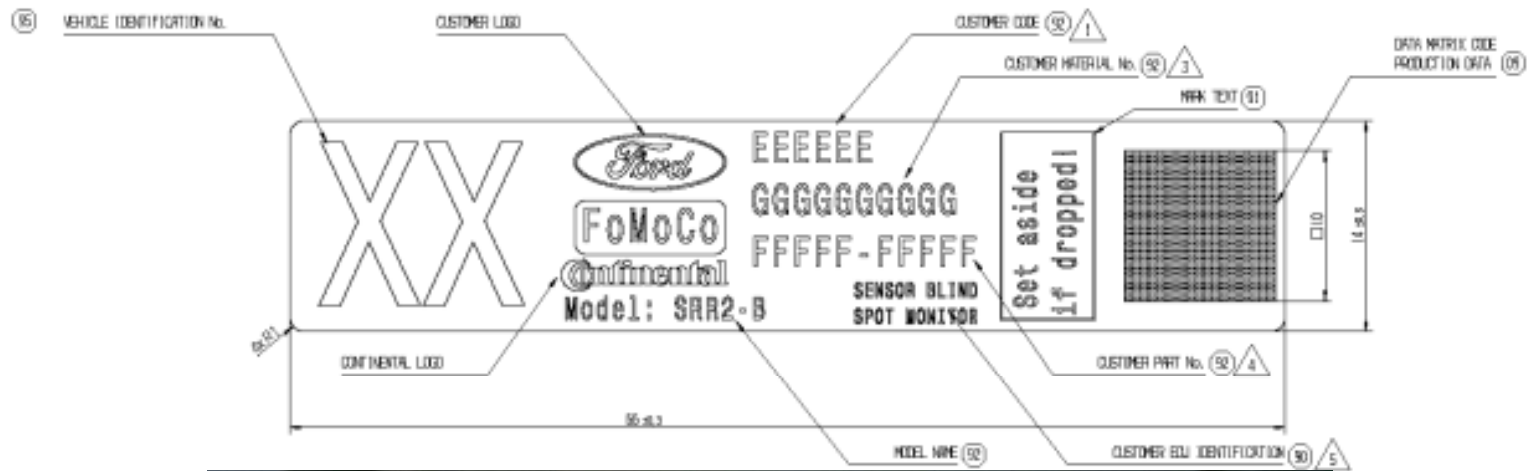


**SRR2-B**

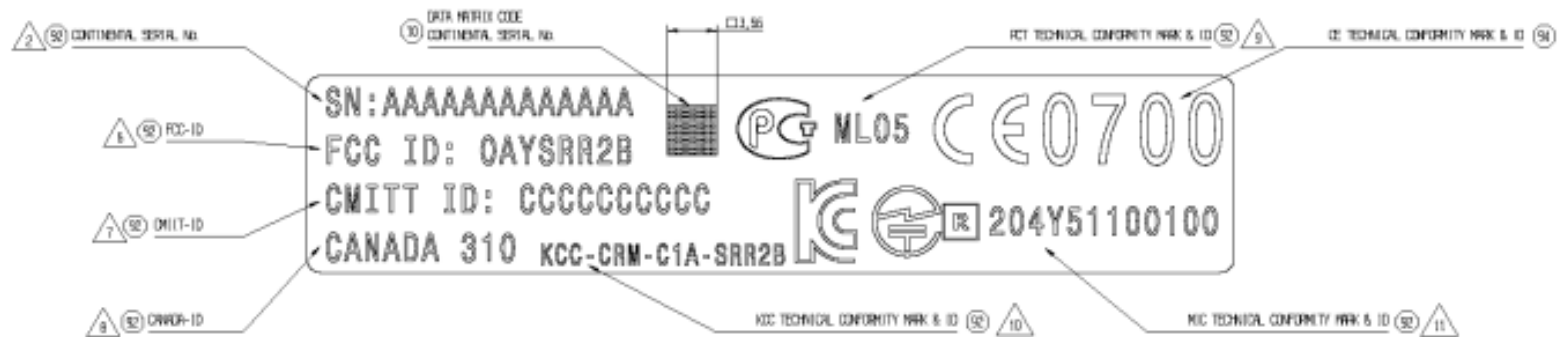
**Exhibit 7 – Label sample**

---

# Label front side



# Label back side



BEWERTUNGEN	NOTIZ
01 ALLGEMEINE LIEFERBEDINGUNGEN ANCH 00AS A8C002207 VERSION AC	01 GENERAL TERMS OF DELIVERY ACC. TO 00AS A8C002207 VERSION AC
02 ALLGEMEINE ANFORDERUNGEN ANCH 60R 1008601 VERSION AC	02 GENERAL REQUIREMENTS ACC. TO 60R 1008601 VERSION AC
03 UmweltDESIGN NACH ATE N 550 00.02; BLATT 250; IDENT Nr. 02	03 DESIGN FOR ENVIRONMENT ACC. TO ATE N 550 00.02; SHEET 250; IDENT No.02
04 FREI VON BLEI, QUERSILBER, CHROM VI, FCW	04 FREE OF LEAD, MERCURY, CHROM VI, Cr6
05 VERPACKUNG ROLLE. DIE VERPACKUNG IST MIT DEM FERTIGUNGSSTANDORT VON CONTINENTAL ZU VEREINBAREN.	05 PACKAGING COIL, PACKAGING TO BE AGREE BY CONTINENTAL MANUFACTURING LOCATION
06 SAUBERKEITSKLASSE 01 NACH 60R 1008607 VERSION AC	06 CLEANLINESS CLASS 01 ACC TO. 60R 1008607 VERSION AC
07 SCHRIFTART: TRIUMVIRATE FARBE: SCHWARZ / WEISS DRUCKAUFLÖSUNG: 300 dpi DATE MATRIX CODE NACH ATE N 101 07.02 BARCODE 2D: ECC200 I80/IEC 16022 QUITEZONE >=2 MODULE BARCODE 1D: CODE 39 I80/IEC 16388 CODE 2of5 I80/IEC 16390 CODE 125 I80/IEC 15417	07 FONT: TRIUMVIRATE COLORE: BLACK / WHITE PRINT RESOLUTION: 300 dpi DATE MATRIX CODE ACC. TO ATE N 101 07.02 BARCODE 2D: ECC200 I80/IEC 16022 QUITEZONE >=2 MODULE BARCODE 1D: CODE 39 I80/IEC 16388 CODE 2of5 I80/IEC 16390 CODE 125 I80/IEC 15417
08 STELLE 1 -13: SAP MATERIAL Nr. STELLE 14-15: REVISION STELLE 16: CODE FUER WERK INGOLSTADT STELLE 17-18: JAHR STELLE 19: MONAT STELLE 20-21: TAG STELLE 22-26: TAG Nr. (HEX)	08 DIGIT 1 -13: SAP MATERIAL No. DIGIT 14-15: REVISION DIGIT 16: PLANT CODE INGOLSTADT DIGIT 17-18: YEAR DIGIT 19: MONTH DIGIT 20-21: DAY DIGIT 22-26: DAY COUNTER (HEX)
09 STELLE 1 -13: SAP MATERIAL Nr. STELLE 14-15: REVISION	09 DIGIT 1 -13: SAP MATERIAL No. DIGIT 14-15: REVISION

BEDRUCKBARE FLÄCHE PRO LABEL	10cm <sub>L</sub>
PRINTABLE AREA PER LABEL	10cm <sub>L</sub>
KLEBEFLÄCHE PRO LABEL	10cm <sub>L</sub>
GLUED SURFACE PER LABEL	10cm <sub>L</sub>

	SCHRIFTHÖHE FONT SIZE
90	1.0
91	1.5
92	2.0
93	3.5
94	5.0
95	14.0