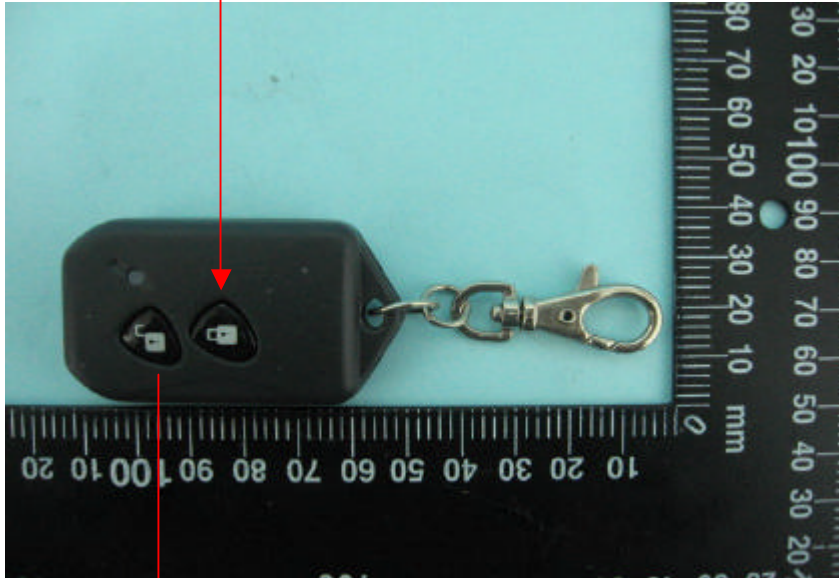


SRC042 User Manual

1. Push transmitter BTN1(lock) one time , door lock



2. Push transmitter BTN2(unlock) one time , door unlock

Specification :

Transmitter Battery : 12V/ 23A

Transmitter operating current : 7 ~ 11mA

Transmitter Battery stands by : 1 year

Frequency : 433.92MHz

Notice : The changes or modifications not expressly approved by the party responsible

for compliance could void the user's authority to operate the equipment.

IMPORTANT NOTE: To comply with the FCC RF exposure compliance requirements, no change to the antenna or the device is permitted. Any change to the antenna or the device could result in the device exceeding the RF exposure requirements and void user's authority to operate the device.

This device complies with Part 15 of the FCC Rules. Operation is subject to the following two conditions: (1) this device may not cause harmful interference, and (2) this device must accept any interference received, including interference that may cause undesired operation.