

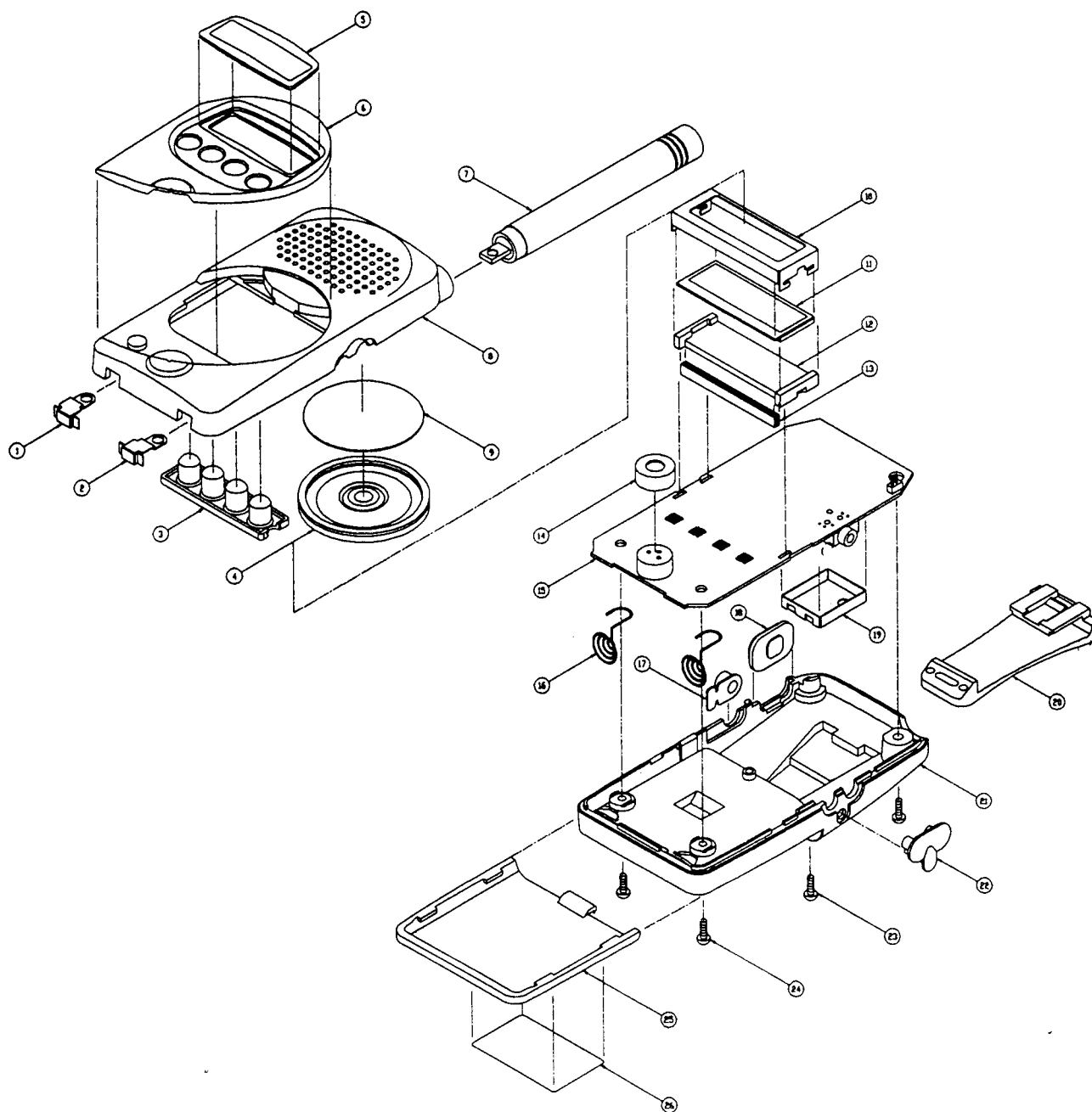
ATTACHMENT L – PARTS LIST/TUNE UP PROCEDURE

| | | |
|----|--|---------------------|
| 1 | ANT | ANT |
| 9 | C9, C11, C12, C16, C36, C43, C45, C59, C75 | 10P |
| 24 | C10, C13, C14, C17, C19, C20, C21, C23, C24, C31, C55, C57, C58, C64, C82, C83, C92, C112, C113, C127, C141, C147, C149, C154 | 102 |
| 1 | C15 | 6P |
| 26 | C18, C26, C28, C33, C34, C51, C60, C65, C115, C118, C121, C123, C125, C129, C134, C140, C145, C146, C148, C159, C164, C169, C171, C172, C173, C175 | 104 |
| 8 | C22, C27, C35, C61, C66, C88, C122, C142 | 1u |
| 1 | C29 | 100P |
| 3 | C30, C63, C73 | 3P |
| 9 | C32, C111, C114, C130, C131, C143, C153, C161, C162 | 103 |
| 2 | C37, C39 | 39P |
| 1 | C38 | 56PU |
| 15 | C41, C49, C52, C56, C67, C78, C79, C89, C91, C93, C94, C95, C109, C155, C163 | 220P |
| 3 | C42, C44, C46 | 5P |
| 4 | C47, C124, C126, C128 | 22P |
| 2 | C48, C53 | 15P |
| 3 | C62, C68, C71 | 2P |
| 2 | C69, C72 | 8PU |
| 1 | C74 | 1P |
| 1 | C76 | 1P8 |
| 2 | C84, C156 | 224 |
| 1 | C81 | 4P |
| 1 | C85 | 3.3/6T3 |
| 2 | C86, C157 | 223 |
| 3 | C101, C103, C107 | 22/4T |
| 1 | C105 | 100/6E3 |
| 1 | C106 | 47/16E |
| 2 | C132, C177 | 393 |
| 1 | C133 | 820P |
| 1 | C152 | 473 |
| 1 | C174 | 472 |
| 1 | C220 | 220/6E3 |
| 1 | CF1 | CF450UG |
| 4 | D3, D6, D7, D10 | KDS114 |
| 1 | D8 | KDS160 |
| 1 | D9 | KDS226 |
| 1 | D11 | KDS120 |
| 1 | D25 | S1B |
| 1 | D1 | MA2S372 |
| 1 | D21 | SR-2333H, RED |
| 1 | D22 | SM-2333T, GRN |
| 1 | D26 | KDS184 |
| 1 | H1 | 30mmX2 WIRE |
| 1 | J1 | STERO |
| 1 | J4 | 2 2X1 |
| 1 | L1 | 10n, (E2-320904T-R) |
| 4 | L2, L11, L12, L17 | 470n, (FI-B1608) |
| 3 | L3, L14, L16 | 10n, (CI-B1608) |
| 1 | L4 | 1n8, (CI-B1608) |
| 3 | L5, L6, L7 | 22n, (451405) |
| 2 | L8, L13 | 24n, (E2-281106T-R) |
| 1 | L9 | 22n, (CI-B1608) |
| 1 | L10 | 39n, (CI-B1608) |
| 1 | L15 | 6n6, (451402) |
| 1 | LCD1 | TTR3264DPFDHN |
| 1 | MIC1 | CMP4540 |
| 1 | Q4 | MRF9382 |
| 1 | Q5 | 2SC4807 |
| 9 | Q19, Q23, Q27, Q28, Q29, Q31, Q32, Q33, Q34 | KRC404 |
| 5 | Q1, Q2, Q7, Q8, Q10 | BFQ67W |
| 1 | Q9 | 2SC4226 |
| 3 | Q21, Q24, Q26 | KRA306 |
| 1 | Q22 | KTA2015 |
| 1 | Q25 | KRA305 |
| 2 | Q30, Q35 | KRA304 |
| 1 | Q3 | KTC4080 |

FRS/GMRS
JDG415H1.SCH
Bill Of Materials
Q'ty Reference

Revised: July 18, 2000
Revision: 1.0
July 18, 2000 10:00:22
Page 2
Part

| | | |
|----|--|-------------|
| 4 | R3, R53, R101, R102 | 330 |
| 10 | R1, R4, R43, R45, R49, R56, R106, R107, R108, R141 | 4K7 |
| 23 | R2, R5, R15, R19, R24, R30, R32, R34, R35, R38, R41, R52, R105, R112, R114, R126, R127, R128, R129, R131, R132, R152, R155 | 10K |
| 5 | R7, R20, R26, R57, R58 | 1K |
| 3 | R8, R10, R31 | 100 |
| 6 | R9, R13, R22, R148, R158, R159 | 2K2 |
| 2 | R11, R44 | 470 |
| 2 | R12, R103 | 330K |
| 1 | R14 | 0 |
| 2 | R16, R48 | 47K |
| 3 | R18, R123, R125 | 470K |
| 1 | R21 | 5K6 |
| 9 | R23, R29, R111, R122, R143, R147, R151, R154, R160 | 100K |
| 2 | R25, R37 | 220 |
| 3 | R33, R47, R55 | 10 |
| 1 | R39 | 22 |
| 1 | R104 | 390K |
| 2 | R109, R156 | 1M |
| 1 | R120 | 120 |
| 3 | R121, R136, R171 | 22K |
| 1 | R124 | 7K5 |
| 1 | R135 | 12K |
| 1 | R153 | 51K |
| 1 | R172 | 270K |
| 1 | R173 | 33K |
| 1 | SF1 | 465M, (KBQ) |
| 1 | SPK1 | 36-16BB-08 |
| 2 | SW1, SW2 | KQT901 |
| 1 | T1 | T13 |
| 1 | U1 | HD40488-??? |
| 1 | U2 | CMX808A |
| 1 | U3 | R1120N401B |
| 1 | U4 | NJM386 |
| 1 | U5 | AK93C45AV-L |
| 1 | U6 | NJM2072M |
| 1 | U7 | NJM324V |
| 1 | U8 | R1120N331B |
| 1 | U11 | TB31202FN |
| 1 | U12 | DBL5018V |
| 1 | VC1 | 3PM |
| 1 | VC2 | 10PM |
| 1 | VR1 | 10KM |
| 1 | X1 | 4MHz |
| 1 | X2 | 21, 25MHz |
| 1 | XF1 | MF21, 7M3 |



| | | | | | |
|-----|------------|-----------------|-------------------------|-----|---------|
| 26 | 705-0022-A | LABEL SPEC | POLYESTER FILM | 1 | |
| 25 | 701-0046-A | BATTERY COVER | POLYCARBONETE | 1 | |
| 24 | 706-0012-A | SCREW MACHINE | BH, M2.0x6, NI-PLATING | 3 | |
| 23 | 706-0012-A | SCREW TAPPING | BH, D2.0x10, NI-PLATING | 1 | |
| 22 | 701-0051-A | COVER JACK | PVC(Hs=60")BLACK | 1 | |
| 21 | 701-0045-A | BACK COVER | POLYCARBONETE | 1 | |
| 20 | 701-0034-A | BELT CLIP | POLYCARBONETE | 1 | |
| 19 | 702-0023-A | SHIELD TOP | SPTE t0.3 | 1 | |
| 18 | 703-0010-A | KNOB PTT | SILICON, (Hs=50") | 1 | |
| 17 | 701-0012-A | KNOB MONITOR | ABS | 1 | |
| 16 | 706-0012-A | CONTACT BATTERY | HSW, D0.6, NI-PLATING | 2 | |
| 15 | | PCB MAIN | FR-4 t1.0 | 1 | |
| 14 | 703-0001-A | BUSHING MIC | SILICONE, (Hs=60") | 1 | |
| 13 | 703-0009-A | INTER CONNECTOR | SILICONE, H3.6xL30x12.0 | 1 | |
| 12 | 701-0039-A | REFLECTOR LCD | PMMA | 1 | |
| 11 | | LCD | | 1 | |
| 10 | 702-0024-A | BRKT LCD | STS-430, t0.3 | 1 | |
| 9 | 704-0001-A | FELT SPEAKER | HIMELON, D36x10.2 | 1 | |
| 8 | 701-0042-A | FRONT COVER 'R' | POLYCARBONETE | 1 | |
| 7 | | ANTENNA | | 1 | |
| 6 | 701-0053-A | DECO COVER 'R' | POLYCARBONETE | 1 | |
| 5 | 701-0054-A | WINDOW LCD | PC-PLATE, t0.8 | 1 | |
| 4 | | SPEAKER | | 1 | |
| 3 | | RUBBER KEY | SILICONE | 1 | |
| 2 | 702-0020-A | CONTACT 'R' | PBS, t0.3, NI-PLATING | 1 | |
| 1 | 702-0021-A | CONTACT 'L' | PBS, t0.3, NI-PLATING | 1 | |
| NO. | PART NO. | PART NAME | DESCRIPTION | QTY | REMARKS |