

Annex A: Test setup photographs



172171_2.JPG: RLS, test setup fully anechoic chamber (pos. 1)

Annex A: Test setup photographs



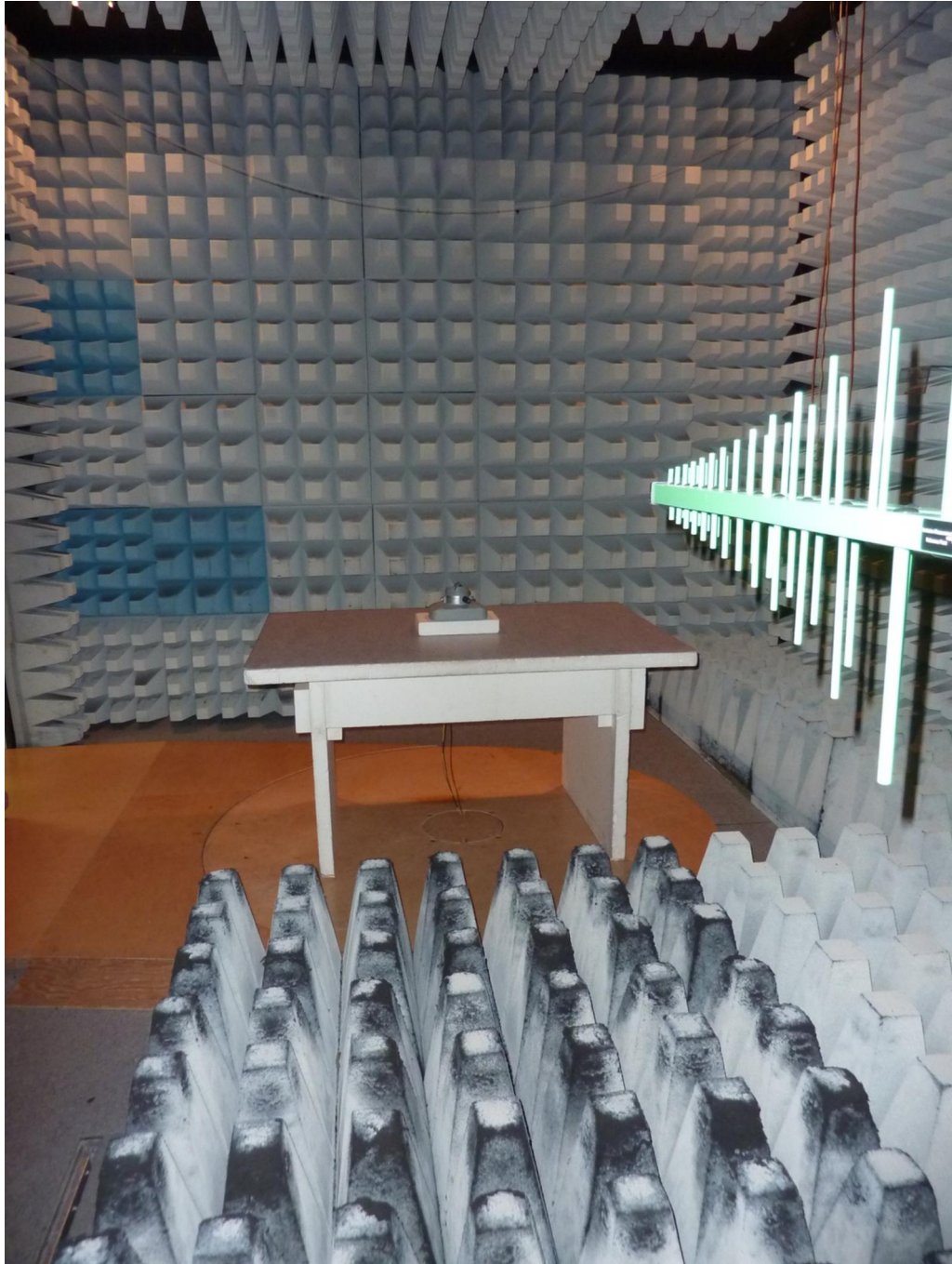
172171_1.JPG: RLS, test setup fully anechoic chamber (pos. 2)

Annex A: Test setup photographs



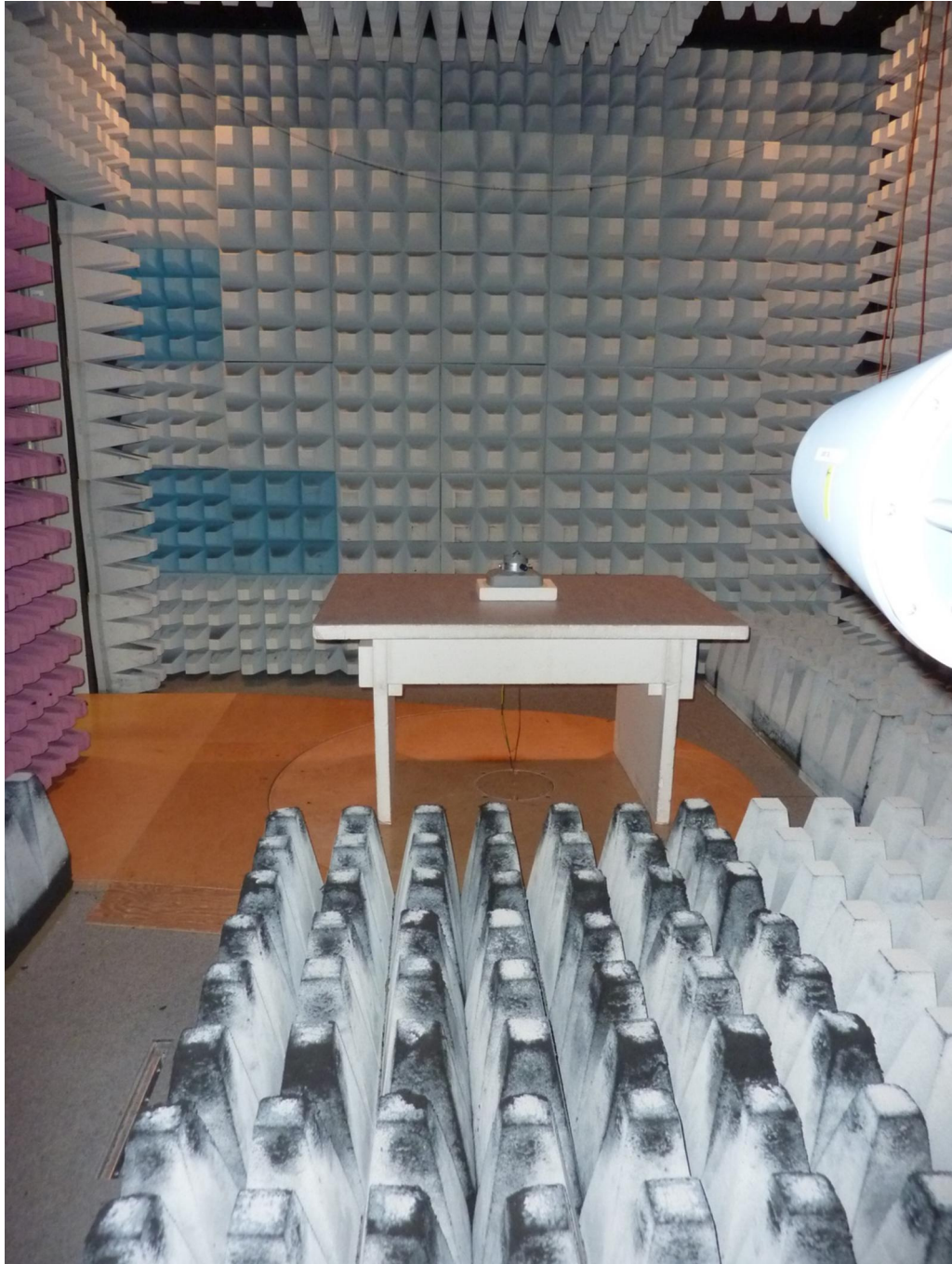
172171_3.JPG: RLS, test setup fully anechoic chamber

Annex A: Test setup photographs



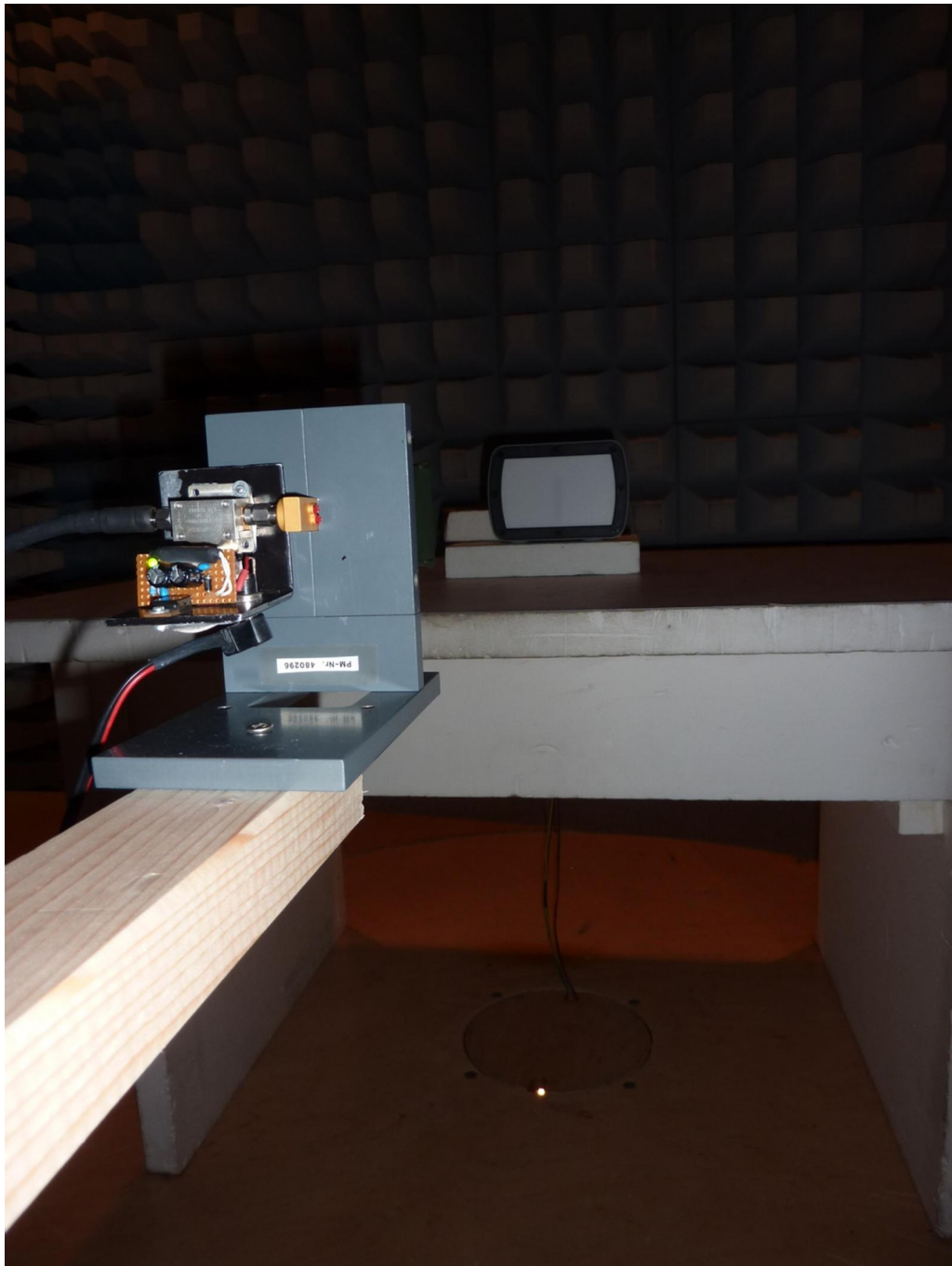
172171_4.JPG: RLS, test setup fully anechoic chamber

Annex A: Test setup photographs



172171_5.JPG: RLS, test setup fully anechoic chamber

Annex A: Test setup photographs



172171_6.JPG: RLS, test setup fully anechoic chamber

Annex A: Test setup photographs



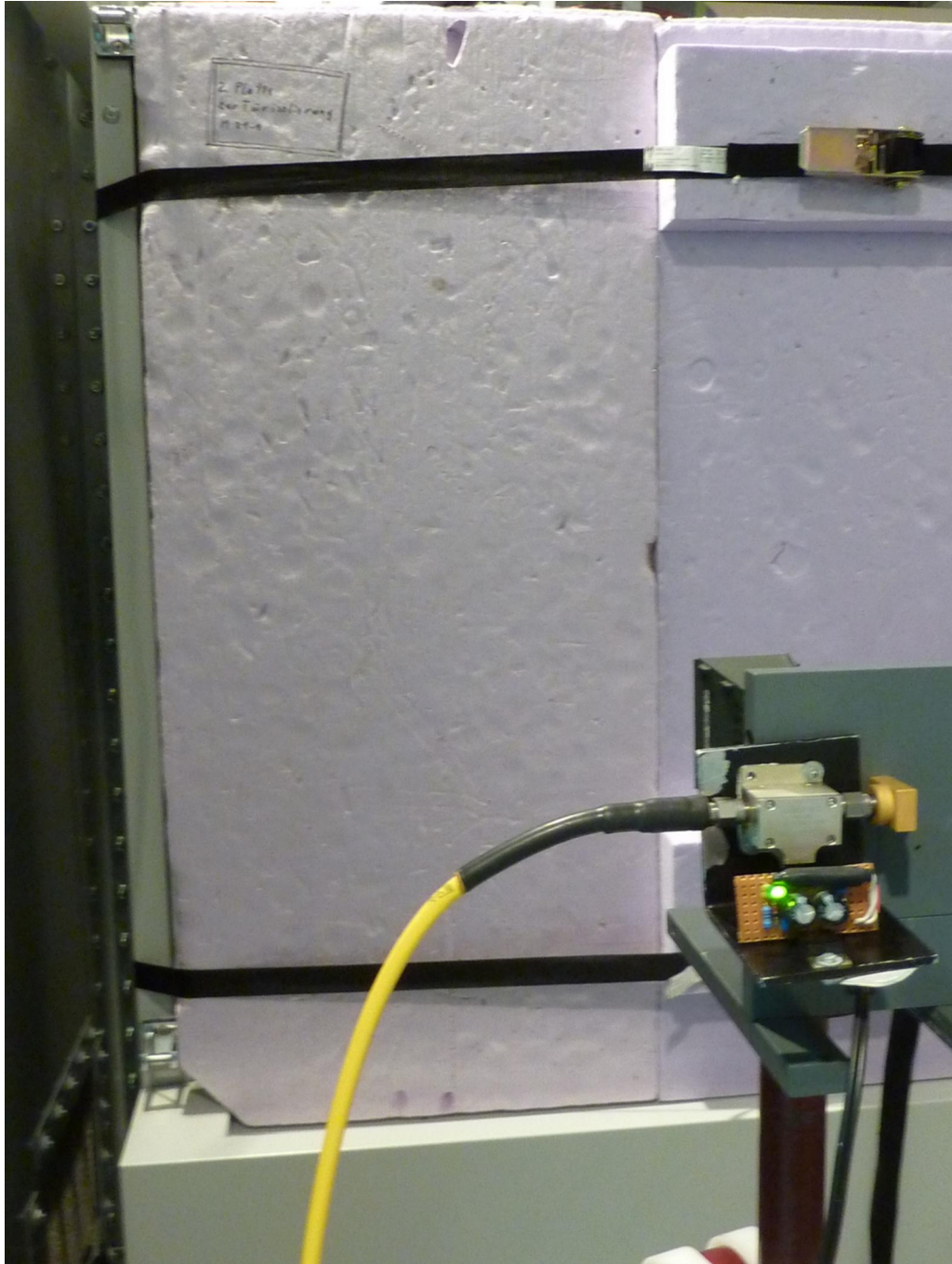
172171_10.JPG: RLS, test setup open area test site (pos. 1)

Annex A: Test setup photographs



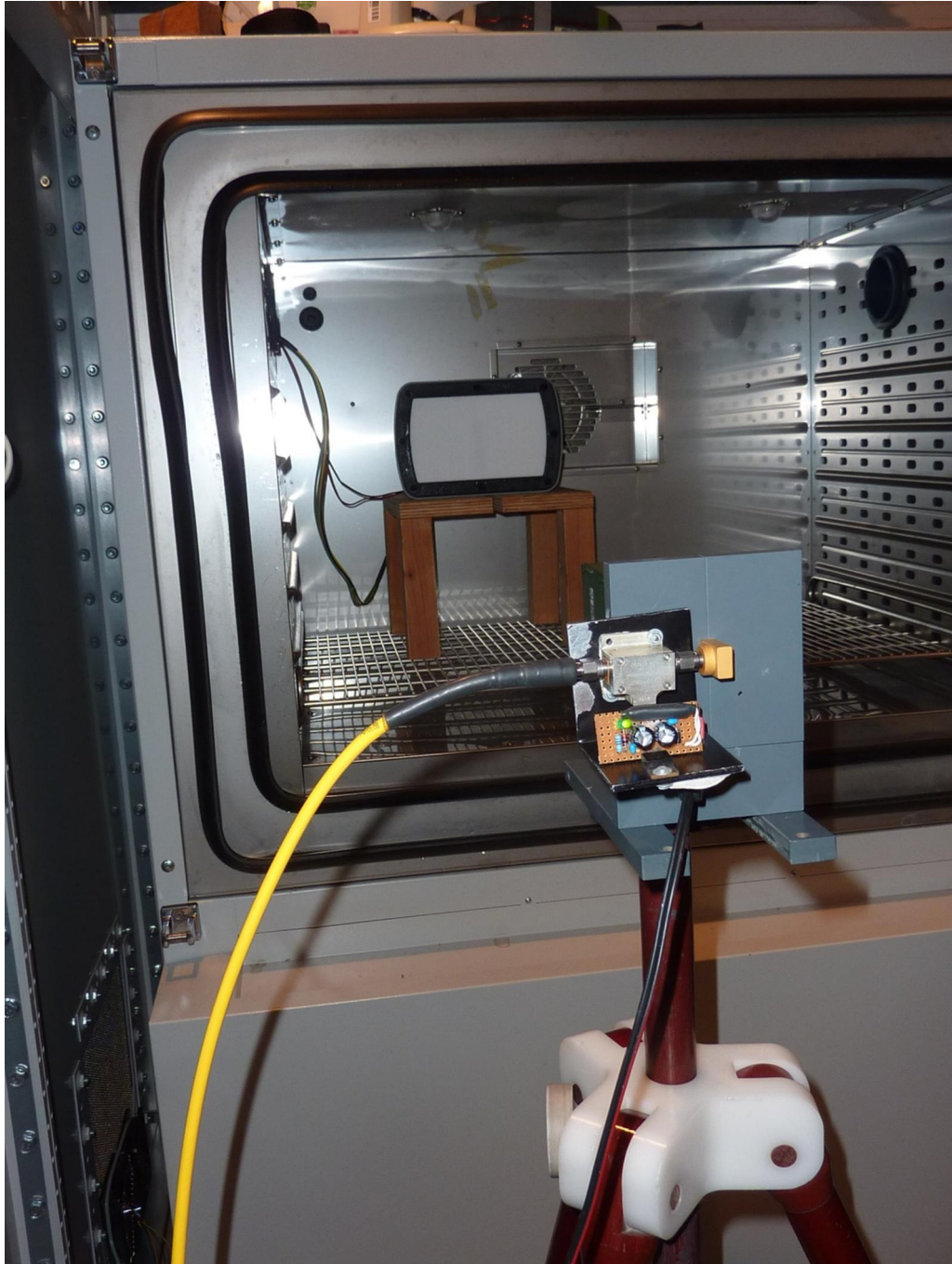
172171_9.JPG: RLS, test setup open area test site (pos. 2)

Annex A: Test setup photographs



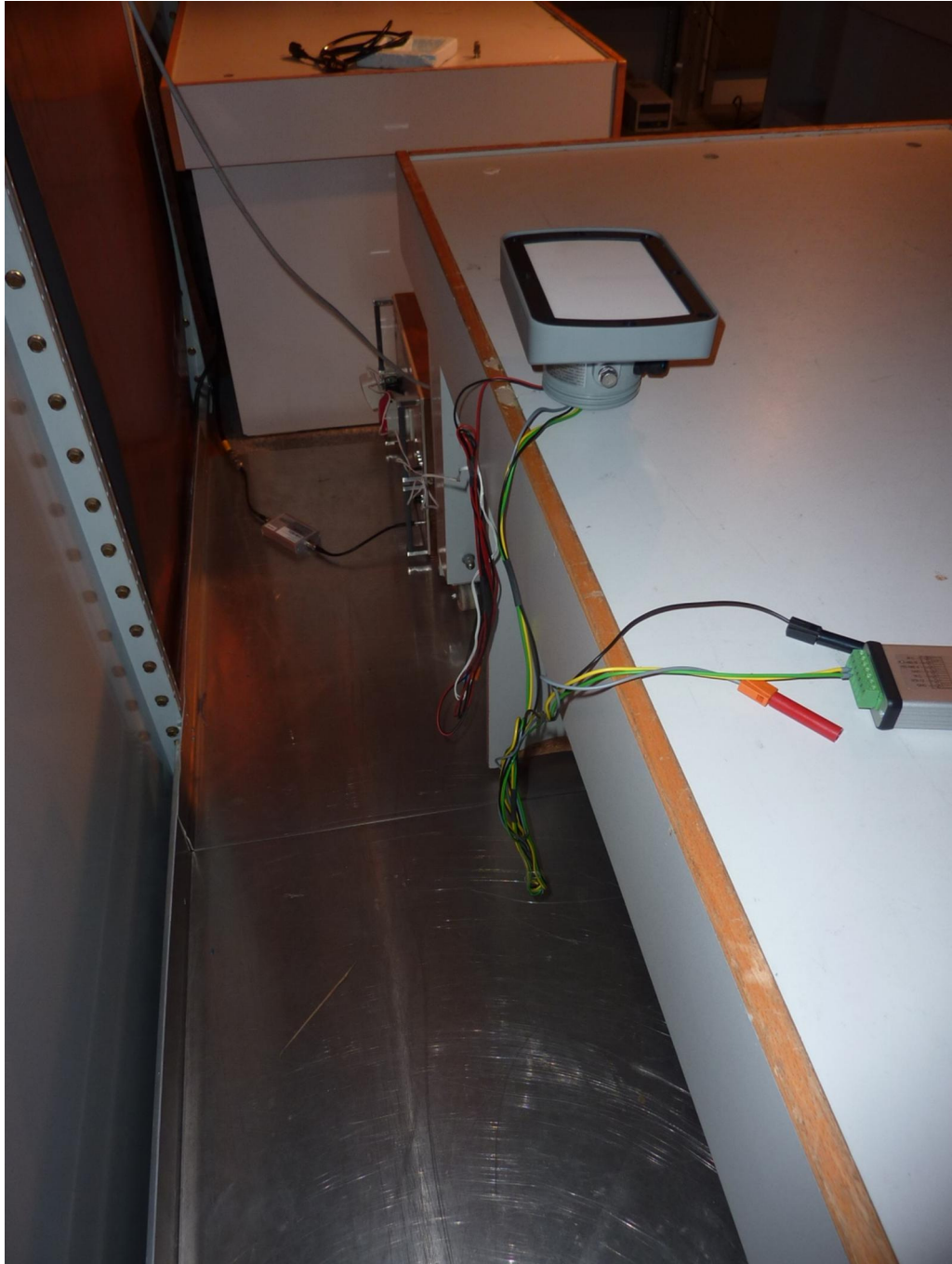
172171_7.JPG: RLS, test setup temperature chamber

Annex A: Test setup photographs



172171_8.JPG: RLS, test setup temperature chamber, isolation removed

Annex A: Test setup photographs



172171_11.JPG: RLS, test setup shielded chamber