

ASIAN CREATION COMMUNICATION CO.,LTD

Address:No12 ,Xingye 5 Road,Yundonghai ,Sanshui,Foshan,Guangdong,China, (528100)

2.4GHz Mobile Antenna

AC-Q24I06

1. Introduction

2.4G Magnetic wireless band antenna delivers marked improvements in efficiency and gain across all common frequencies (2400-2483MHz) in use for WIFI and Wireless bands.

Small enough to be used indoors and outdoors, the antenna performance has been designed to take advantage of any metal plate (ground-plane) it attaches to deliver best of class performance.



2. Specification

Electrical

Frequency Range 2400-2483MHz

Band width 83MHz

Gain 7dBi

V.S.W.R ≤ 2.0

Radiation Omni

Polarization Vertical

Maximum Input Power 50W

Impedance 50Ω

Connector RP SMA Male

Cable Type RG174

Cable Length 3M

Antenna Radome Material Steel

Mount way Magnetic

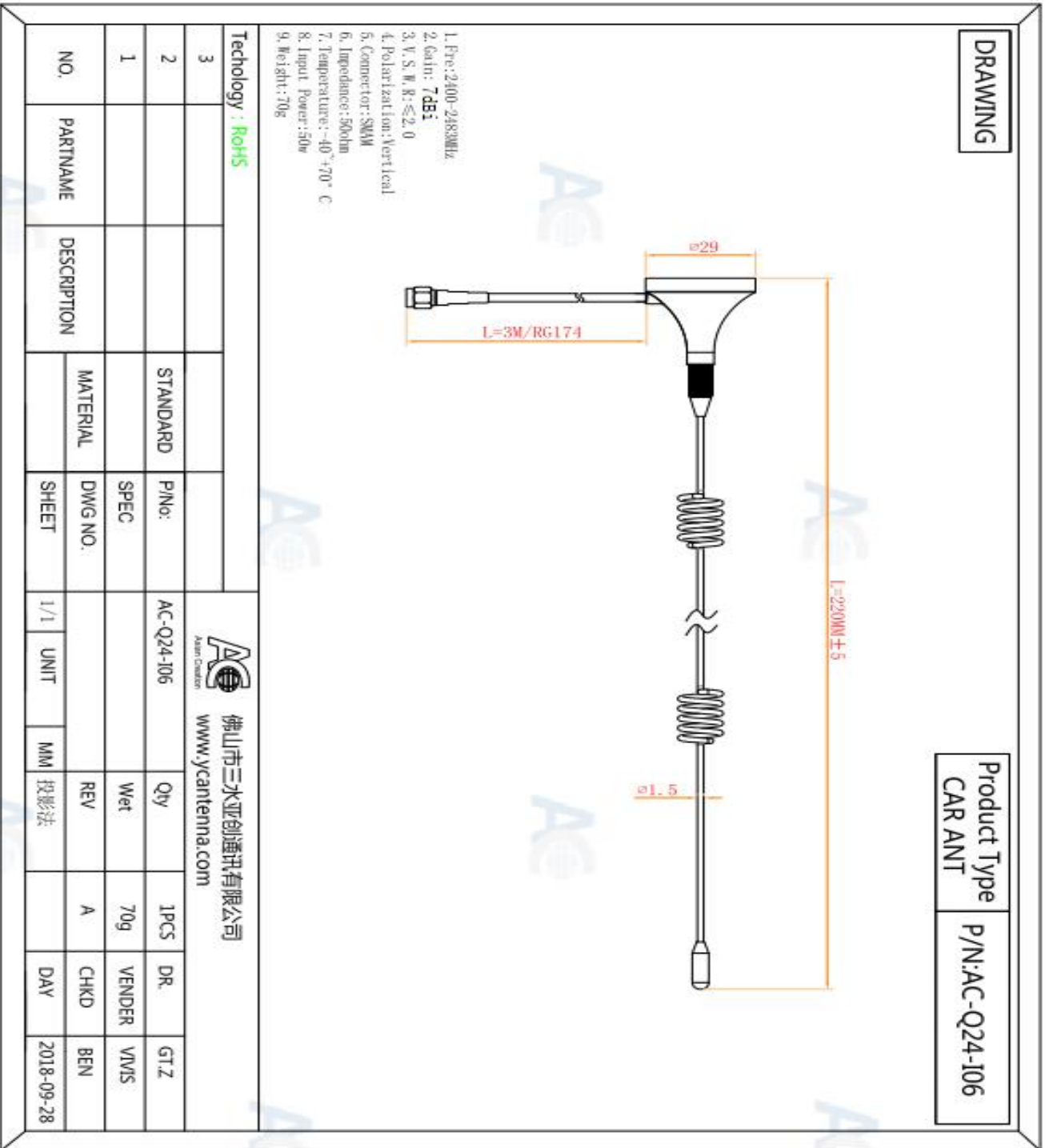
Mechanical

Dimensions $\Phi 29 \times 220\text{mm}$

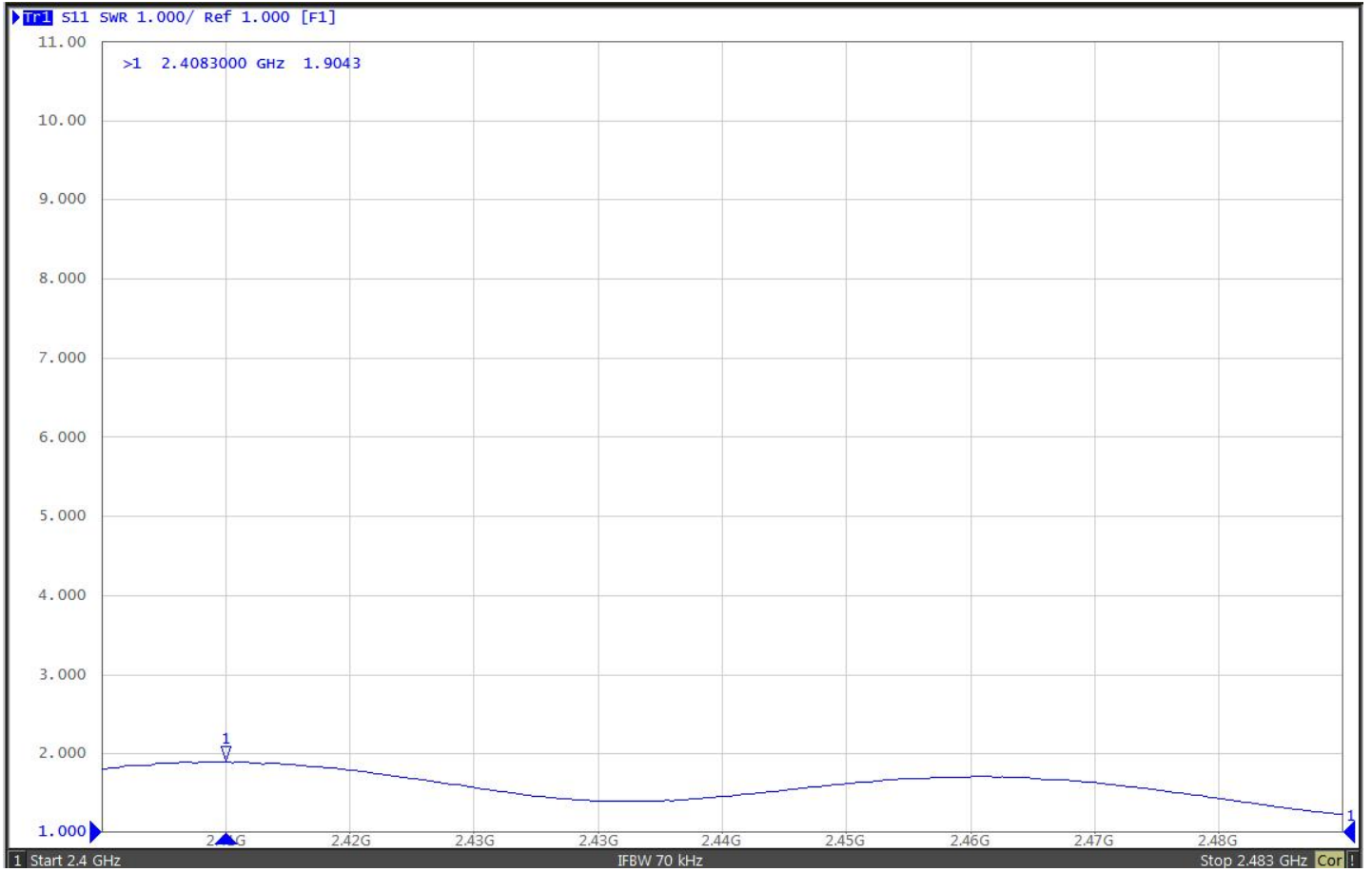
Weight 140g

Operating Temperature -40°C to $+70^\circ\text{C}$

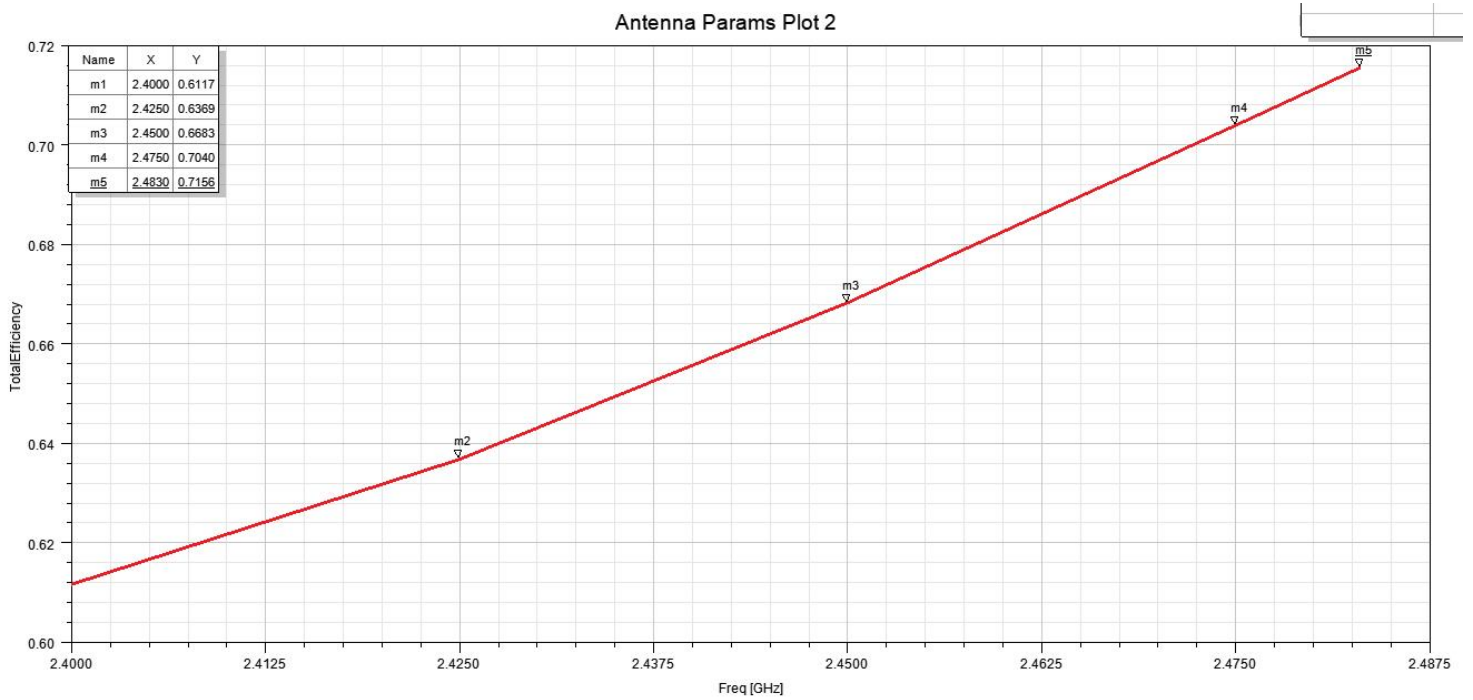
3.Drawing



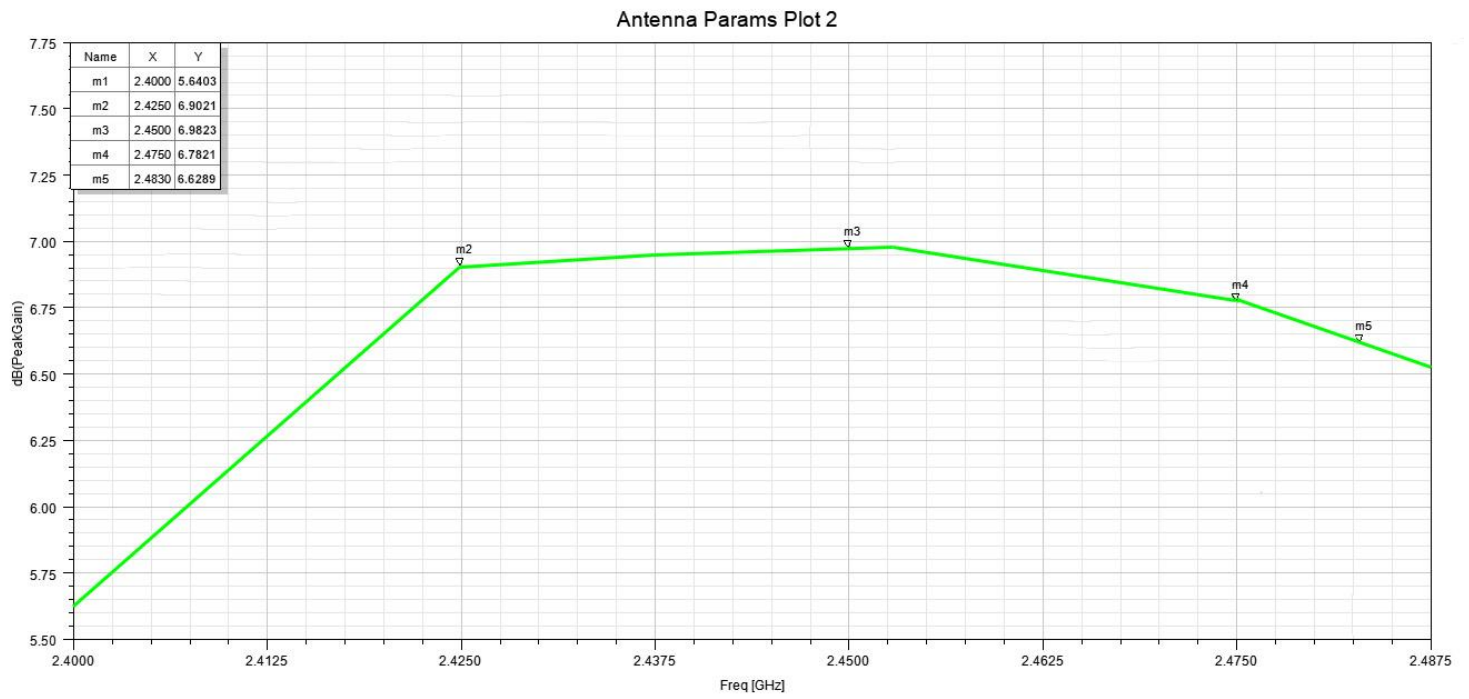
4.V.S.W.R



5.Efficiency

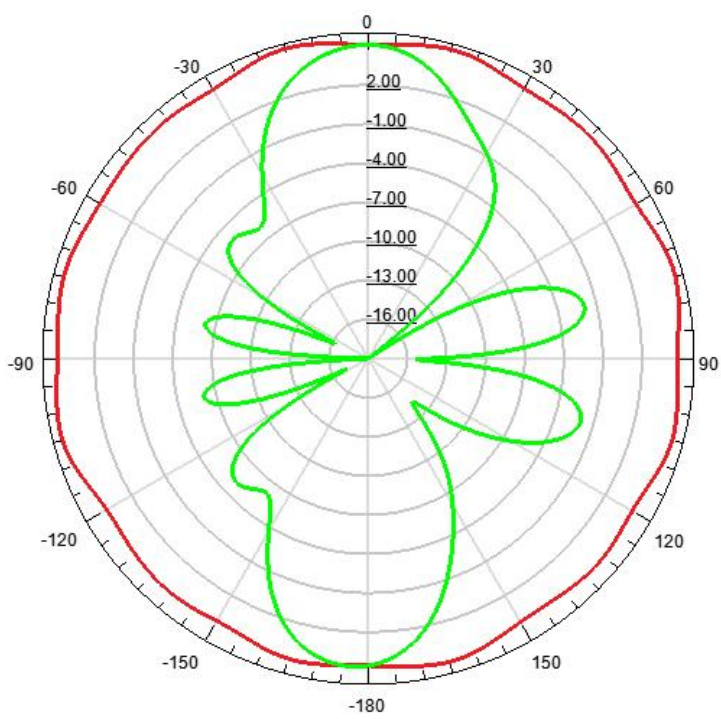


6.Gain

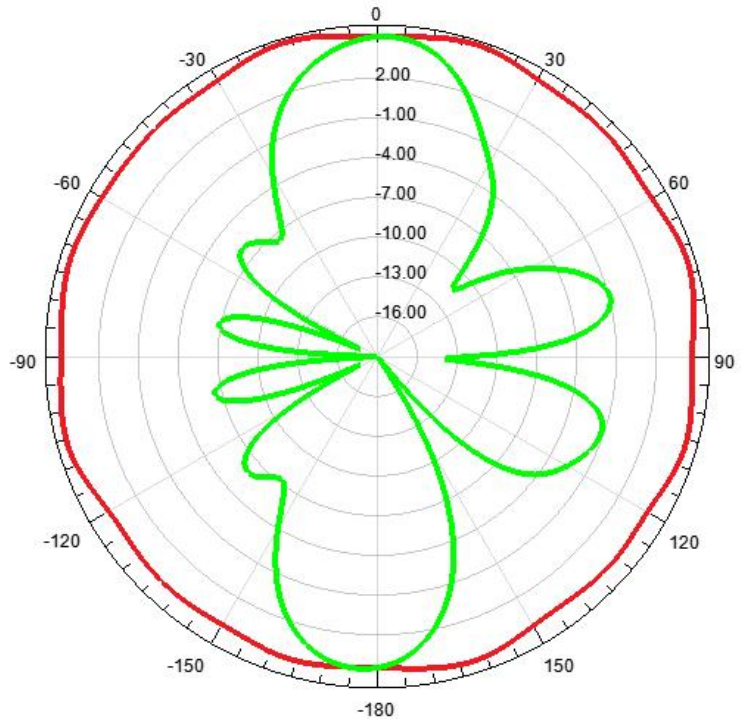


2.4G Gain And Efficiency		
Frequency/MHz	Efficiency (%)	Gain/dBi
2400	61.17	5.6403
2425	63.69	6.9021
2450	66.83	7.0023
2475	70.4	6.7821
2483	71.56	6.6289

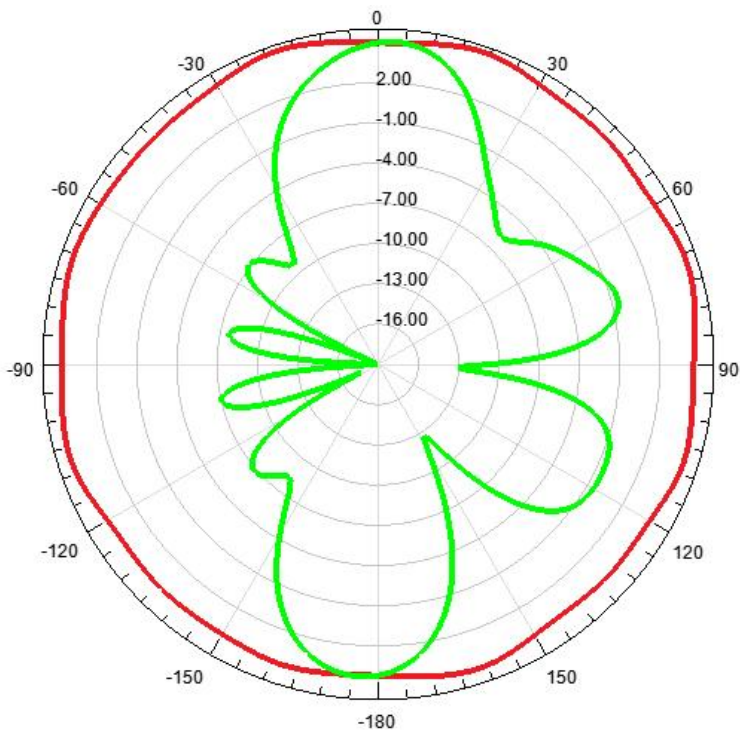
7. Radiation Pattern



2400MHz



2450MHz



2483MHz