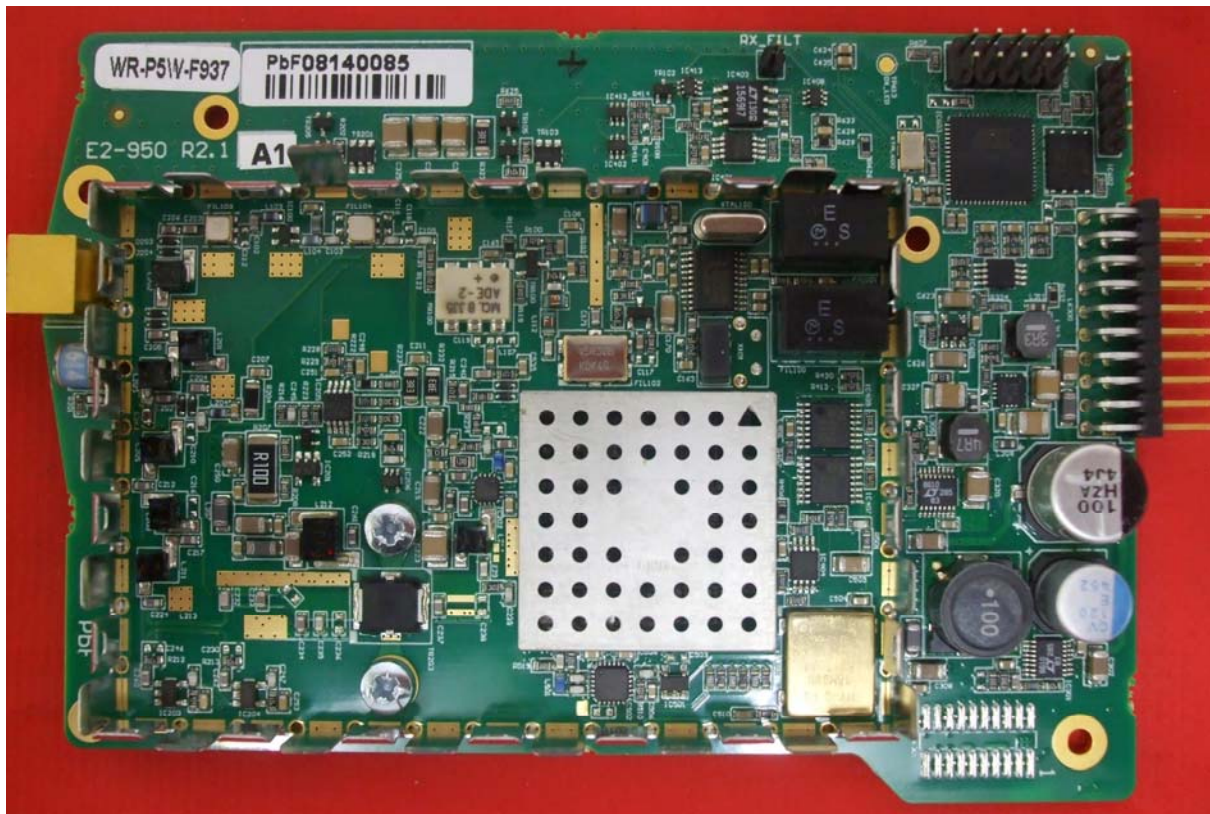
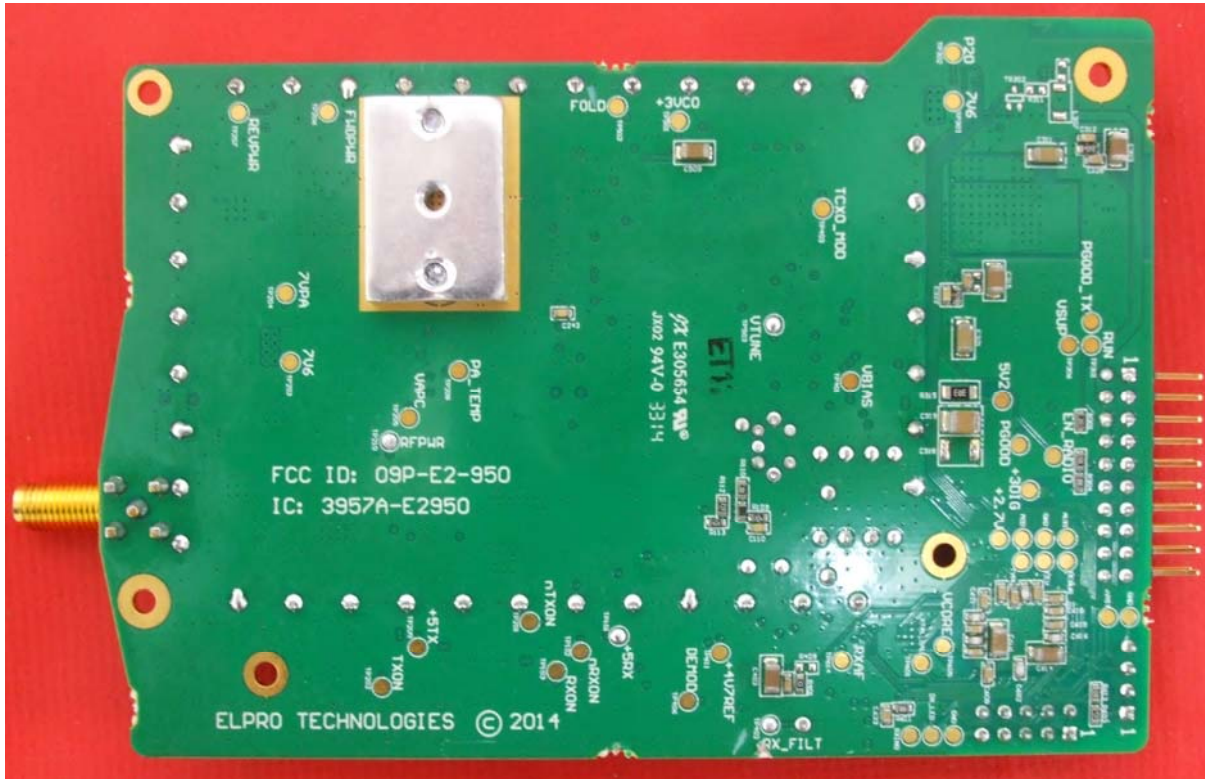


Model number E2-950 is shown in the corner of the circuit board





Sample label that would be applied to the radio that the module would be inserted into

**EATON** **ELPRO**  
950U-E Wireless Ethernet

I.T.E for Use in Hazardous Locations  
Class I Div 2, Groups ABCD;  
Temp T5, Tamb -40C to +60C

Contains FCC ID: O9P-E2-950

Contains IC: 3957A-E2950

BAT: 10 - 30V 2500mA 

S/N : 08141501240



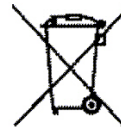
Model: 950U-E-H-937-W



RF POWER : 5W



N16



Manufactured In Australia

'Setup' mode IP : 192.168.0.140

[www.eaton.com/wireless](http://www.eaton.com/wireless)