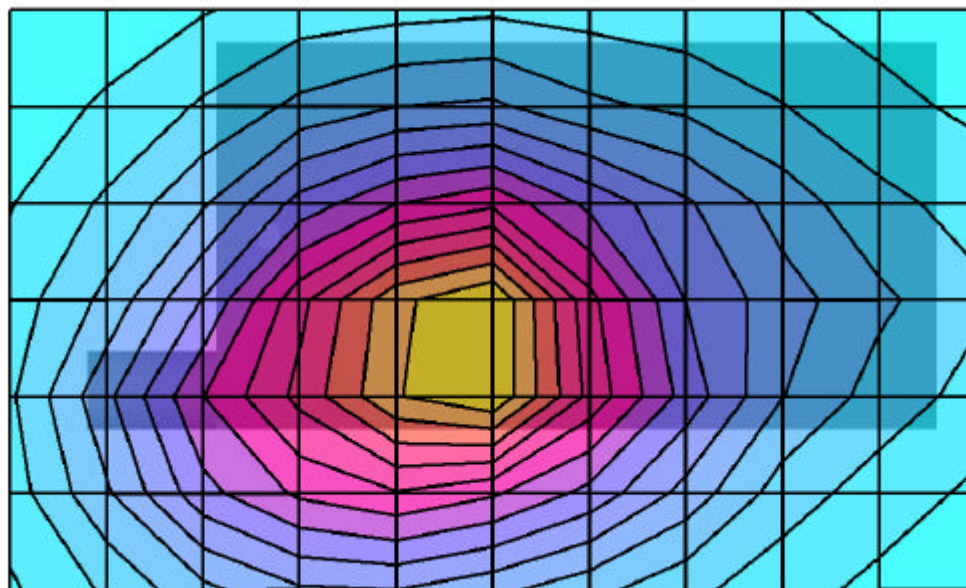


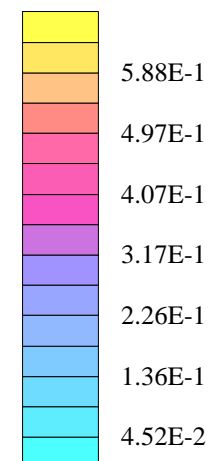
Handspring Inc. FCC ID: O8FBW

SAM Phantom; Flat Section; Position: (90°,270°)
Probe: ET3DV6 - SN1387; ConvF(6.40,6.40,6.40); Crest factor: 1.0
835 MHz Muscle: $\sigma = 0.99$ mho/m $\epsilon_r = 54.8$ $\rho = 1.00$ g/cm³
Coarse: Dx = 15.0, Dy = 15.0, Dz = 10.0
Cube 5x5x7
SAR (1g): 0.590 mW/g, SAR (10g): 0.398 mW/g

Body-worn SAR - Leather Side Case with Belt-Clip Accessory
Keypad Side of EUT facing Planar Phantom
Treo 600 Dual-Band CDMA Phone
Lithium-ion Battery
Fixed Stubby Antenna
Cellular CDMA Mode
Channel 1013 [824.70 MHz]
Conducted Power: 24.03 dBm
Ambient Temp. 22.8°C; Fluid Temp. 22.0°C
Date Tested: June 25, 2003



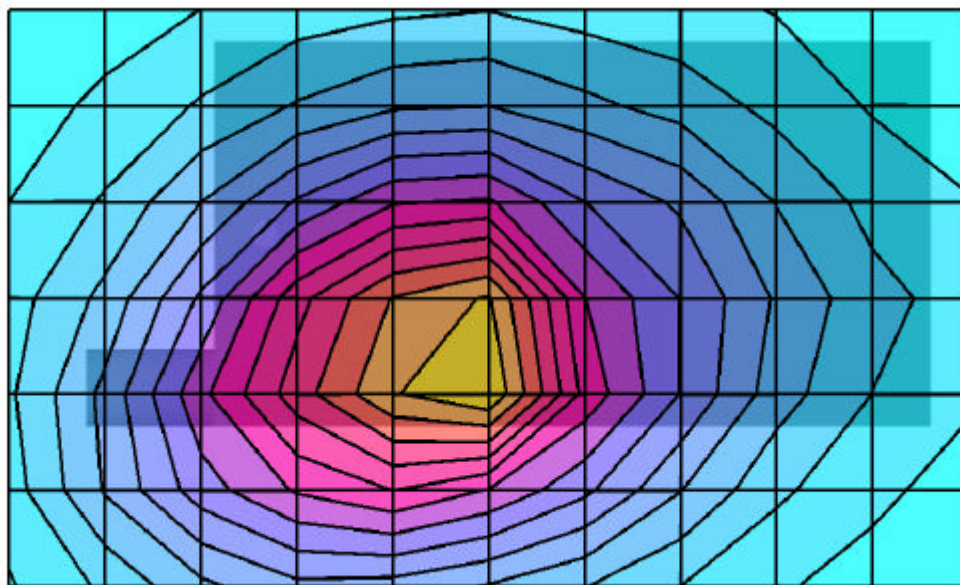
SAR_{Tot} [mW/g]



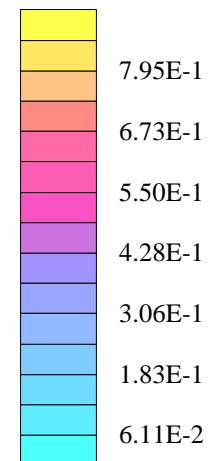
Handspring Inc. FCC ID: O8FBW

SAM Phantom; Flat Section; Position: (90°,270°)
Probe: ET3DV6 - SN1387; ConvF(6.40,6.40,6.40); Crest factor: 1.0
835 MHz Muscle: $\sigma = 0.99$ mho/m $\epsilon_r = 54.8$ $\rho = 1.00$ g/cm³
Coarse: Dx = 15.0, Dy = 15.0, Dz = 10.0
Cube 5x5x7
SAR (1g): 0.822 mW/g, SAR (10g): 0.543 mW/g

Body-worn SAR - Leather Side Case with Belt-Clip Accessory
Keypad Side of EUT facing Planar Phantom
Treo 600 Dual-Band CDMA Phone
Lithium-ion Battery
Fixed Stubby Antenna
Cellular CDMA Mode
Channel 363 [835.89 MHz]
Conducted Power: 24.10 dBm
Ambient Temp. 22.8°C; Fluid Temp. 22.0°C
Date Tested: June 25, 2003



SAR_{Tot} [mW/g]

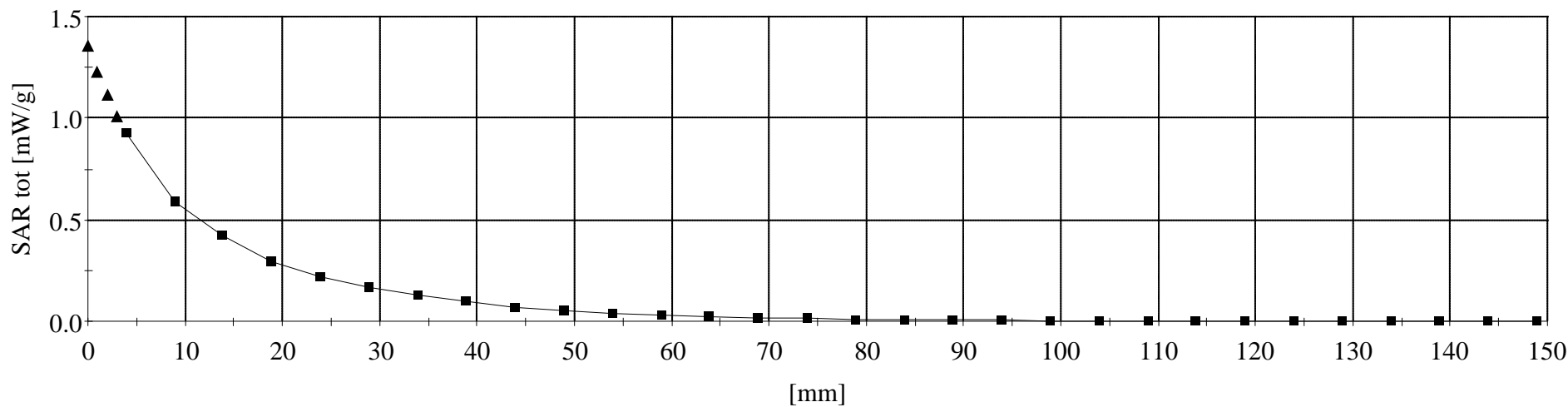


Handspring Inc. FCC ID: O8FBW

SAM Phantom; Flat Section
Probe: ET3DV6 - SN1387; ConvF(6.40,6.40,6.40); Crest factor: 1.0
835 MHz Muscle: $\sigma = 0.99$ mho/m $\epsilon_r = 54.8$ $\rho = 1.00$ g/cm³

Z-Axis Extrapolation at Peak SAR Location

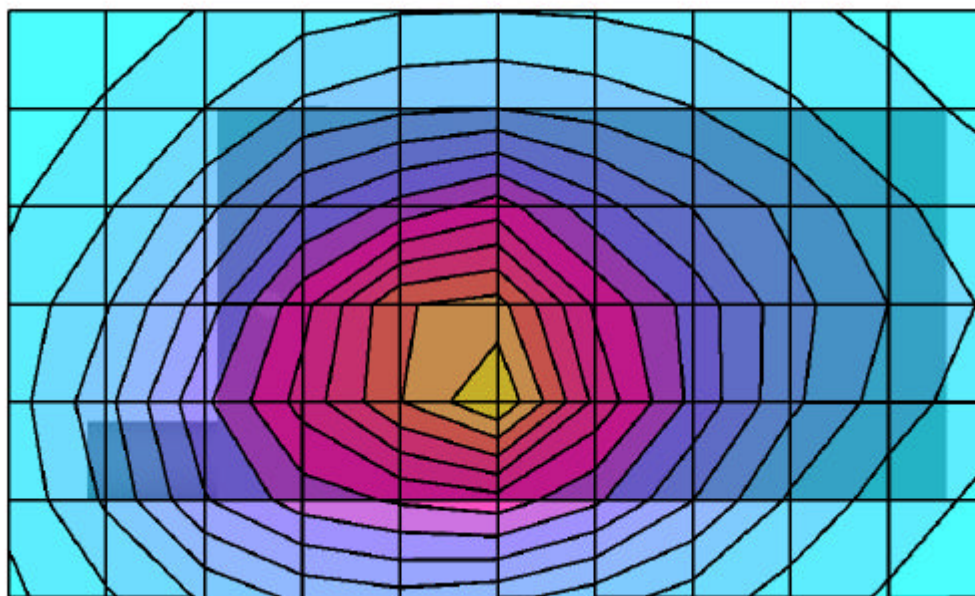
Body-worn SAR - Leather Side Case with Belt-Clip Accessory
Keypad Side of EUT facing Planar Phantom
Treo 600 Dual-Band CDMA Phone
Lithium-ion Battery
Fixed Stubby Antenna
Cellular CDMA Mode
Channel 363 [835.89 MHz]
Conducted Power: 24.10 dBm
Ambient Temp. 22.8°C; Fluid Temp. 22.0°C
Date Tested: June 25, 2003



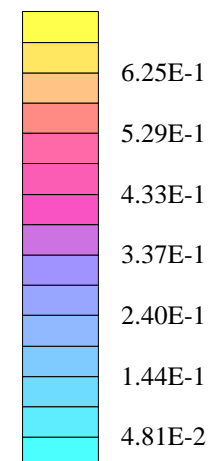
Handspring Inc. FCC ID: O8FBW

SAM Phantom; Flat Section; Position: (90°,270°)
Probe: ET3DV6 - SN1387; ConvF(6.40,6.40,6.40); Crest factor: 1.0
835 MHz Muscle: $\sigma = 0.99$ mho/m $\epsilon_r = 54.8$ $\rho = 1.00$ g/cm³
Coarse: Dx = 15.0, Dy = 15.0, Dz = 10.0
Cube 5x5x7
SAR (1g): 0.604 mW/g, SAR (10g): 0.409 mW/g

Body-worn SAR - Leather Side Case with Belt-Clip Accessory
Keypad Side of EUT facing Planar Phantom
Treo 600 Dual-Band CDMA Phone
Lithium-ion Battery
Fixed Stubby Antenna
Cellular CDMA Mode
Channel 777 [848.31 MHz]
Conducted Power: 24.01 dBm
Ambient Temp. 22.8°C; Fluid Temp. 22.0°C
Date Tested: June 25, 2003



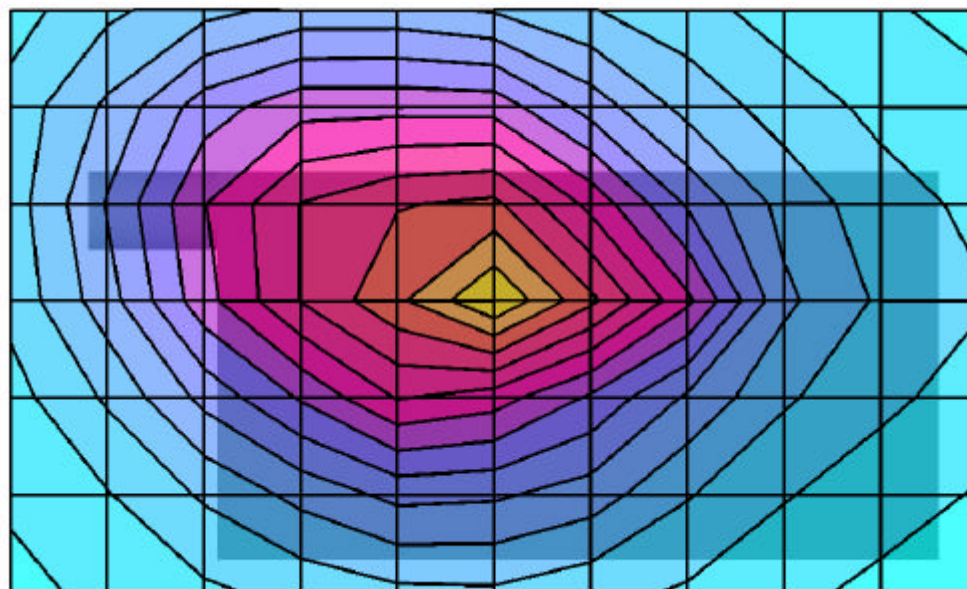
SAR_{Tot} [mW/g]



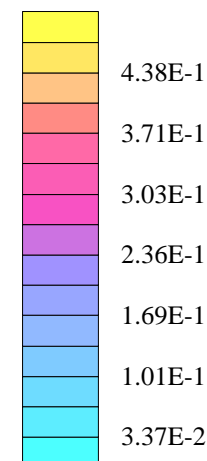
Handspring Inc. FCC ID: O8FBW

SAM Phantom; Flat Section; Position: (270°,90°)
Probe: ET3DV6 - SN1387; ConvF(6.40,6.40,6.40); Crest factor: 1.0
835 MHz Muscle: $\sigma = 0.99$ mho/m $\epsilon_r = 54.8$ $\rho = 1.00$ g/cm³
Coarse: Dx = 15.0, Dy = 15.0, Dz = 10.0
Cube 5x5x7
SAR (1g): 0.391 mW/g, SAR (10g): 0.271 mW/g

Body-worn SAR - Fitted Leather Case with Removable Belt-Clip & Ear-Microphone
Back Side of EUT facing Planar Phantom
Treo 600 Dual-Band CDMA Phone
Lithium-ion Battery
Fixed Stubby Antenna
Cellular CDMA Mode
Channel 363 [835.89 MHz]
Conducted Power: 24.01 dBm
Ambient Temp. 22.8°C; Fluid Temp. 22.0°C
Date Tested: June 25, 2003



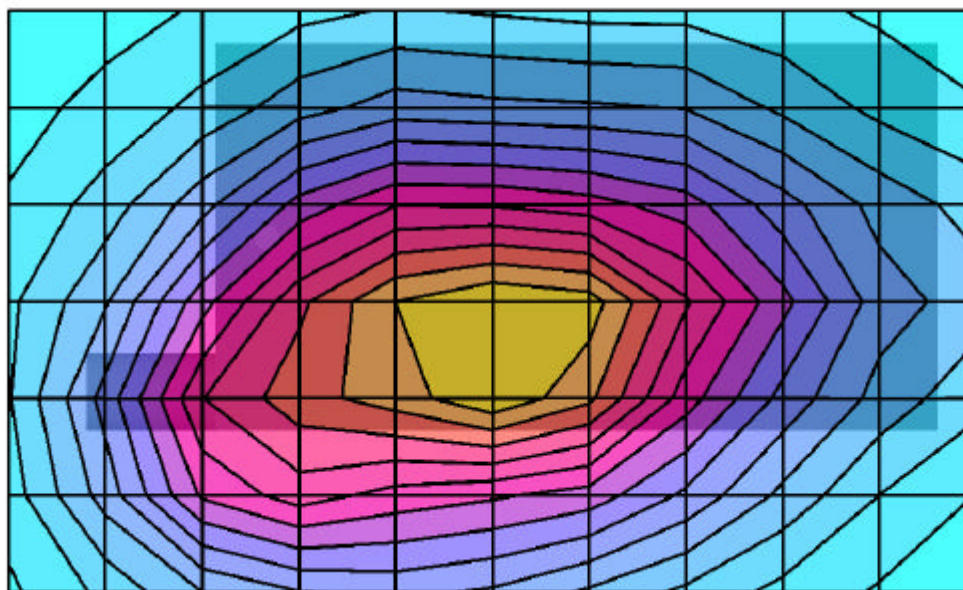
SAR_{Tot} [mW/g]



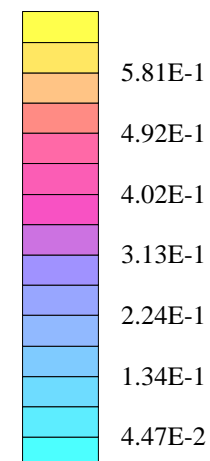
Handspring Inc. FCC ID: O8FBW

SAM Phantom; Flat Section; Position: (90°,270°)
Probe: ET3DV6 - SN1387; ConvF(6.40,6.40,6.40); Crest factor: 1.0
835 MHz Muscle: $\sigma = 0.99$ mho/m $\epsilon_r = 54.8$ $\rho = 1.00$ g/cm³
Coarse: Dx = 15.0, Dy = 15.0, Dz = 10.0
Cube 5x5x7
SAR (1g): 0.573 mW/g, SAR (10g): 0.413 mW/g

Body-worn SAR - Front Keypad Side of EUT with Ear-Microphone Accessory
1.0 cm Air Spacing between Front Side of EUT and Planar Phantom
Treo 600 Dual-Band CDMA Phone
Lithium-ion Battery
Fixed Stubby Antenna
Cellular CDMA Mode
Channel 363 [835.89 MHz]
Conducted Power: 24.08 dBm
Ambient Temp. 22.8°C; Fluid Temp. 22.0°C
Date Tested: June 25, 2003



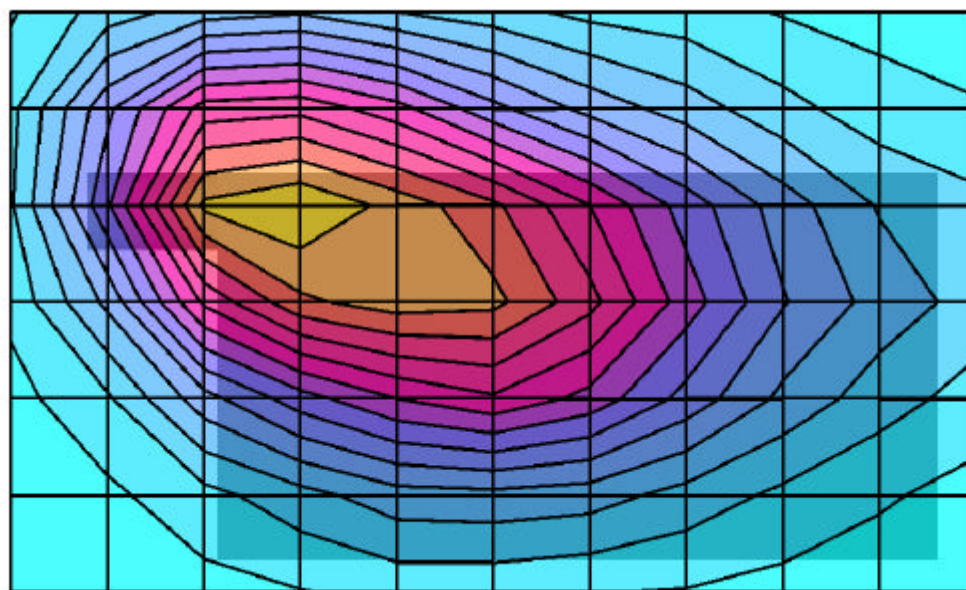
SAR_{Tot} [mW/g]



Handspring Inc. FCC ID: O8FBW

SAM Phantom; Flat Section; Position: (270°,90°)
Probe: ET3DV6 - SN1387; ConvF(6.40,6.40,6.40); Crest factor: 1.0
835 MHz Muscle: $\sigma = 0.99$ mho/m $\epsilon_r = 54.8$ $\rho = 1.00$ g/cm³
Coarse: Dx = 15.0, Dy = 15.0, Dz = 10.0
Cube 5x5x7
SAR (1g): 0.744 mW/g, SAR (10g): 0.512 mW/g

Body-worn SAR - Back Side of EUT with Ear-Microphone Accessory
1.0 cm Air Spacing between Back Side of EUT and Planar Phantom
Treo 600 Dual-Band CDMA Phone
Lithium-ion Battery
Fixed Stubby Antenna
Cellular CDMA Mode
Channel 363 [835.89 MHz]
Conducted Power: 24.04 dBm
Ambient Temp. 22.8°C; Fluid Temp. 22.0°C
Date Tested: June 25, 2003



SAR_{Tot} [mW/g]

