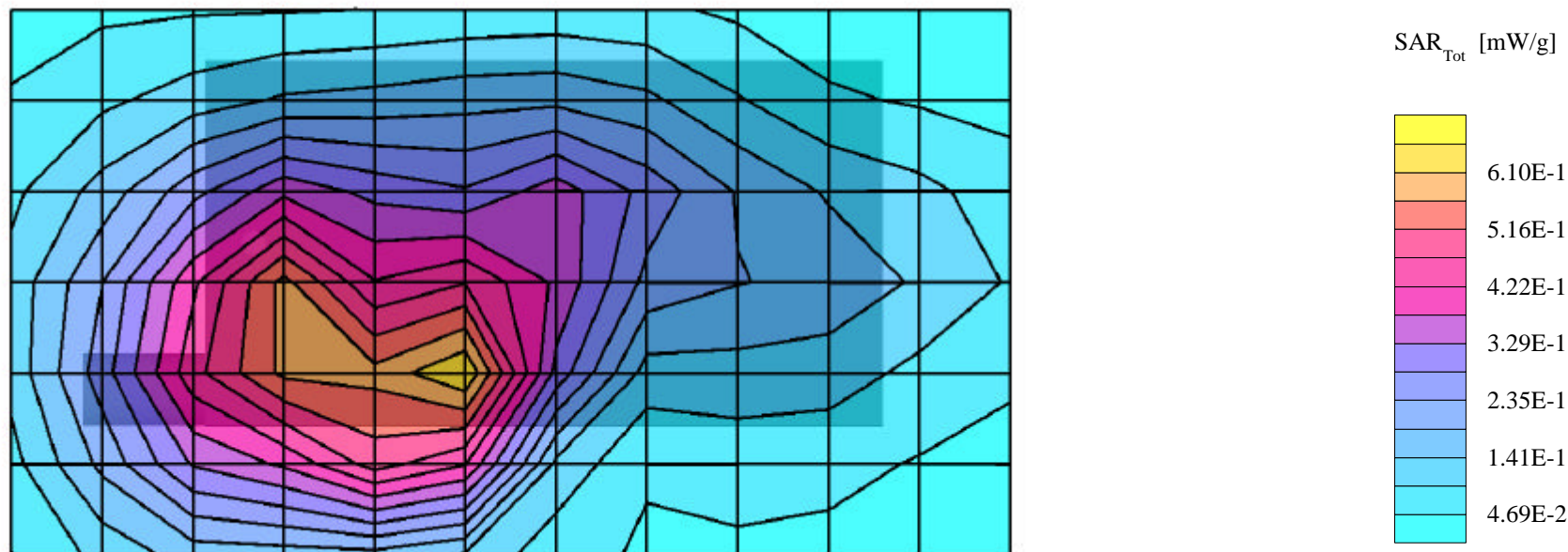


Handspring Inc. FCC ID: O8FBW

SAM Phantom; Flat Section; Position: (90°,270°)
Probe: ET3DV6 - SN1387; ConvF(4.90,4.90,4.90); Crest factor: 1.0
1900 MHz Muscle: $\sigma = 1.58$ mho/m $\epsilon_r = 51.7$ $\rho = 1.00$ g/cm³
Coarse: Dx = 15.0, Dy = 15.0, Dz = 10.0
Cube 5x5x7
SAR (1g): 0.576 mW/g, SAR (10g): 0.336 mW/g

Body-worn SAR - Leather Side Case with Belt-Clip Accessory
Keypad Side of EUT facing Planar Phantom
Treo 600 Dual-Band CDMA Phone
Lithium-ion Battery
Fixed Stubby Antenna
PCS CDMA Mode
Channel 600 [1880.00 MHz]
Conducted Power: 24.10 dBm
Ambient Temp. 22.5°C; Fluid Temp. 21.7°C
Date Tested: June 25, 2003



Handspring Inc. FCC ID: O8FBW

SAM Phantom; Flat Section; Position: (270°,90°)
 Probe: ET3DV6 - SN1387; ConvF(4.90,4.90,4.90); Crest factor: 1.0
 1900 MHz Muscle: $\sigma = 1.58$ mho/m $\epsilon_r = 51.7$ $\rho = 1.00$ g/cm³

Coarse: Dx = 15.0, Dy = 15.0, Dz = 10.0

Cube 5x5x7

SAR (1g): 0.164 mW/g, SAR (10g): 0.107 mW/g

Body-worn SAR - Fitted Leather Case with Removable Belt-Clip & Ear-Microphone

Back Side of EUT facing Planar Phantom

Treo 600 Dual-Band CDMA Phone

Lithium-ion Battery

Fixed Stubby Antenna

PCS CDMA Mode

Channel 600 [1880.00 MHz]

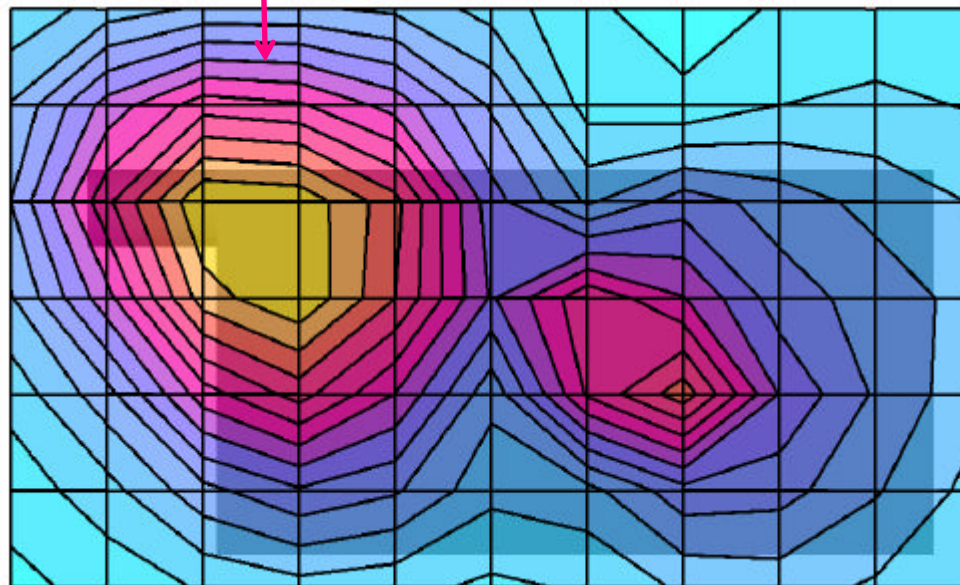
Conducted Power: 24.08 dBm

Ambient Temp. 22.5°C; Fluid Temp. 21.7°C

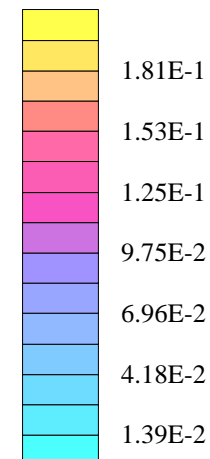
Date Tested: June 25, 2003

PRIMARY HOTSPOT EVALUATION

Primary Hotspot



SAR_{Tot} [mW/g]



Handspring Inc. FCC ID: O8FBW

SAM Phantom; Flat Section; Position: (270°,90°)
 Probe: ET3DV6 - SN1387; ConvF(4.90,4.90,4.90); Crest factor: 1.0

1900 MHz Muscle: $\sigma = 1.58$ mho/m $\epsilon_r = 51.7$ $\rho = 1.00$ g/cm³

Coarse: Dx = 15.0, Dy = 15.0, Dz = 10.0

Cube 5x5x7

SAR (1g): 0.138 mW/g, SAR (10g): 0.0822 mW/g

Body-worn SAR - Fitted Leather Case with Removable Belt-Clip & Ear-Microphone

Back Side of EUT facing Planar Phantom

Treo 600 Dual-Band CDMA Phone

Lithium-ion Battery

Fixed Stubby Antenna

PCS CDMA Mode

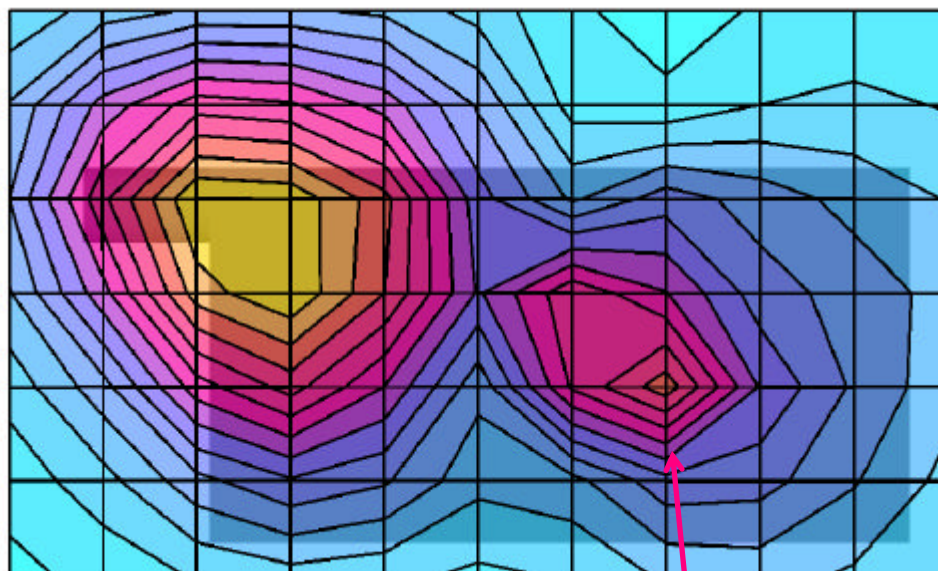
Channel 600 [1880.00 MHz]

Conducted Power: 24.08 dBm

Ambient Temp. 22.5°C; Fluid Temp. 21.7°C

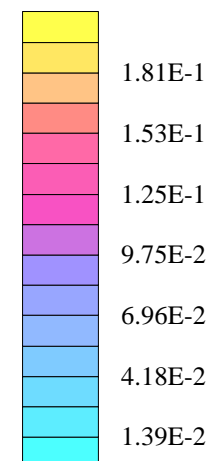
Date Tested: June 25, 2003

SECONDARY HOTSPOT EVALUATION



Secondary Hotspot

SAR_{Tot} [mW/g]

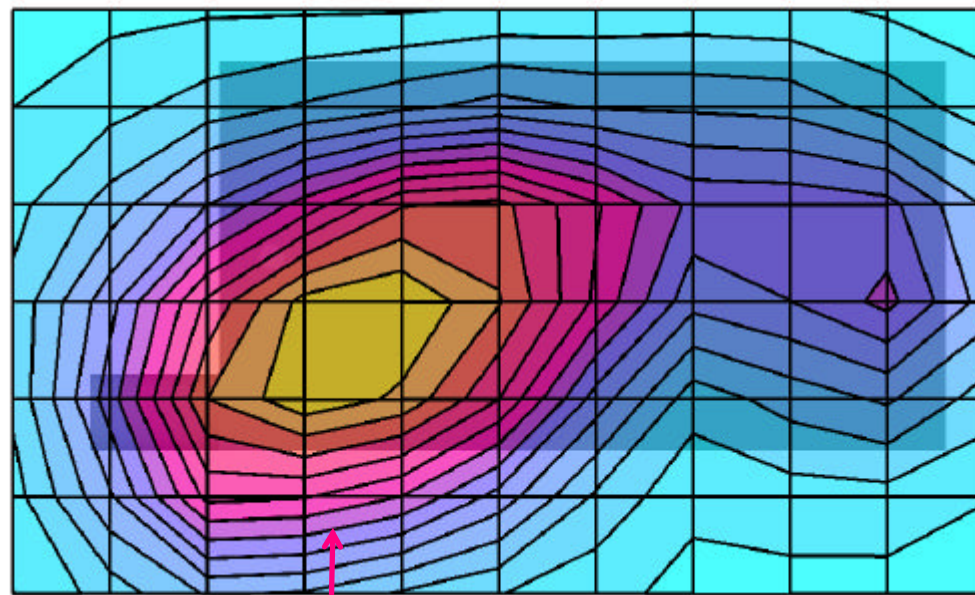


Handspring Inc. FCC ID: O8FBW

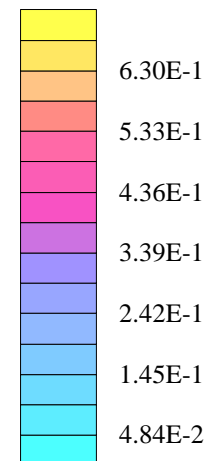
SAM Phantom; Flat Section; Position: (90°, 270°)
 Probe: ET3DV6 - SN1387; ConvF(4.90, 4.90, 4.90); Crest factor: 1.0
 1900 MHz Muscle: $\sigma = 1.58 \text{ mho/m}$ $\epsilon_r = 51.7$ $\rho = 1.00 \text{ g/cm}^3$
 Coarse: Dx = 15.0, Dy = 15.0, Dz = 10.0
 Cube 5x5x7
 SAR (1g): 0.565 mW/g, SAR (10g): 0.375 mW/g

Body-worn SAR - Front Keypad Side of EUT with Ear-Microphone
 1.0 cm Air Spacing between Front Side of EUT and Planar Phantom
 Treo 600 Dual-Band CDMA Phone
 Lithium-ion Battery
 Fixed Stubby Antenna
 PCS CDMA Mode
 Channel 600 [1880.00 MHz]
 Conducted Power: 23.98 dBm
 Ambient Temp. 22.5°C; Fluid Temp. 21.7°C
 Date Tested: June 25, 2003

PRIMARY HOTSPOT EVALUATION



SAR_{Tot} [mW/g]



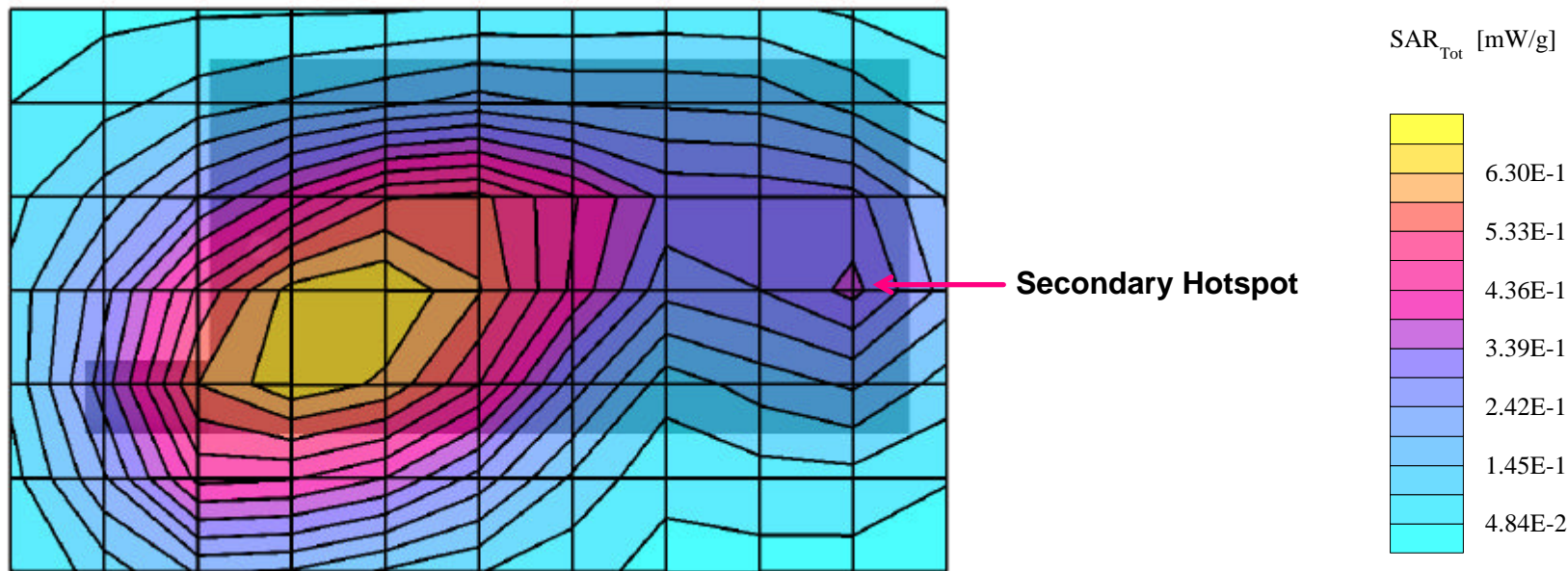
Primary Hotspot

Handspring Inc. FCC ID: O8FBW

SAM Phantom; Flat Section; Position: (90°,270°)
Probe: ET3DV6 - SN1387; ConvF(4.90,4.90,4.90); Crest factor: 1.0
1900 MHz Muscle: $\sigma = 1.58$ mho/m $\epsilon_r = 51.7$ $\rho = 1.00$ g/cm³
Coarse: Dx = 15.0, Dy = 15.0, Dz = 10.0
Cube 5x5x7
SAR (1g): 0.292 mW/g, SAR (10g): 0.186 mW/g

Body-worn SAR - Front Keypad Side of EUT with Ear-Microphone
1.0 cm Air Spacing between Front Side of EUT and Planar Phantom
Treo 600 Dual-Band CDMA Phone
Lithium-ion Battery
Fixed Stubby Antenna
PCS CDMA Mode
Channel 600 [1880.00 MHz]
Conducted Power: 23.98 dBm
Ambient Temp. 22.5°C; Fluid Temp. 21.7°C
Date Tested: June 25, 2003

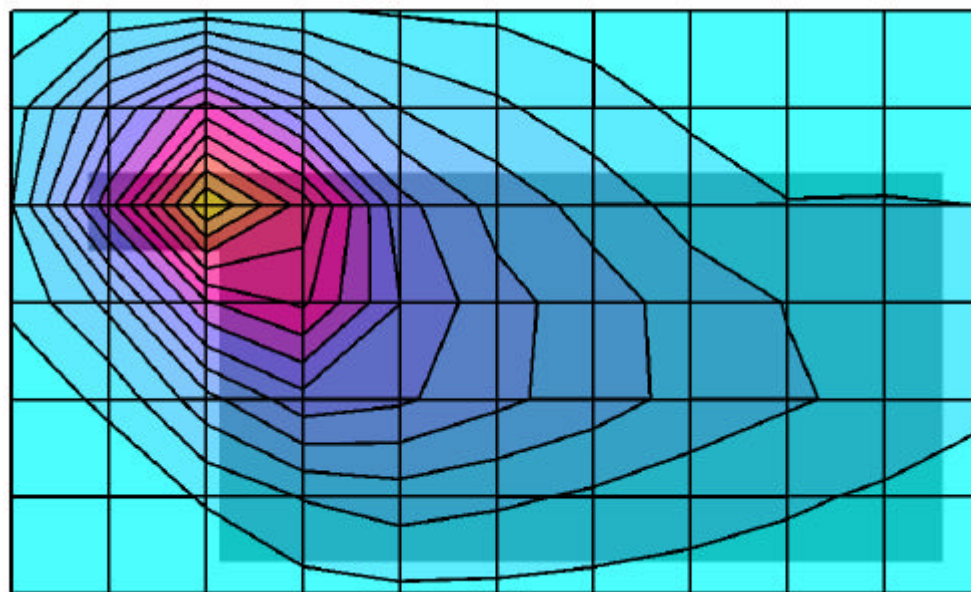
SECONDARY HOTSPOT EVALUATION



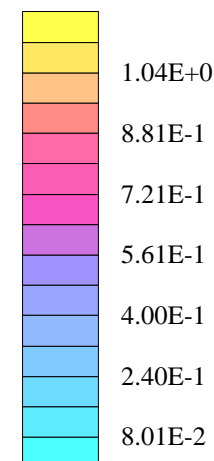
Handspring Inc. FCC ID: O8FBW

SAM Phantom; Flat Section; Position: (270°,90°)
Probe: ET3DV6 - SN1387; ConvF(4.90,4.90,4.90); Crest factor: 1.0
1900 MHz Muscle: $\sigma = 1.58$ mho/m $\epsilon_r = 51.7$ $\rho = 1.00$ g/cm³
Coarse: Dx = 15.0, Dy = 15.0, Dz = 10.0
Cube 5x5x7
SAR (1g): 0.861 mW/g, SAR (10g): 0.501 mW/g

Body-worn SAR - Back Side of EUT with Ear-Microphone Accessory
1.0 cm Air Spacing between Back Side of EUT and Planar Phantom
Treo 600 Dual-Band CDMA Phone
Lithium-ion Battery
Fixed Stubby Antenna
PCS CDMA Mode
Channel 25 [1851.25 MHz]
Conducted Power: 24.06 dBm
Ambient Temp. 22.5°C; Fluid Temp. 21.7°C
Date Tested: June 25, 2003



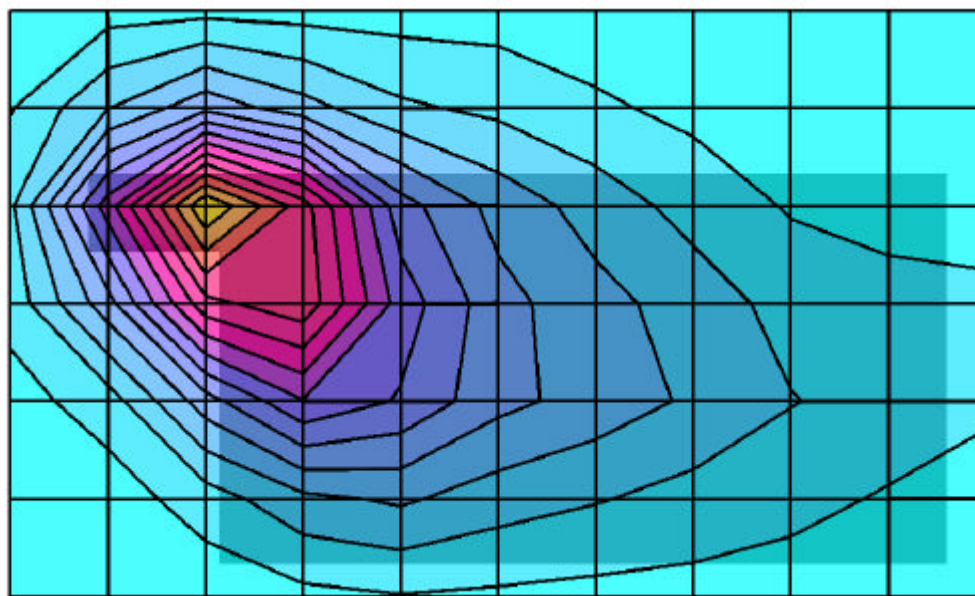
SAR_{Tot} [mW/g]



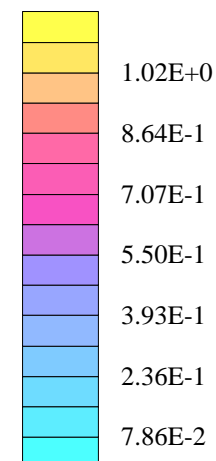
Handspring Inc. FCC ID: O8FBW

SAM Phantom; Flat Section; Position: (270°,90°)
 Probe: ET3DV6 - SN1387; ConvF(4.90,4.90,4.90); Crest factor: 1.0
 1900 MHz Muscle: $\sigma = 1.58$ mho/m $\epsilon_r = 51.7$ $\rho = 1.00$ g/cm³
 Coarse: Dx = 15.0, Dy = 15.0, Dz = 10.0
 Cube 5x5x7
 SAR (1g): 0.861 mW/g, SAR (10g): 0.502 mW/g

Body-worn SAR - Back Side of EUT with Ear-Microphone Accessory
 1.0 cm Air Spacing between Back Side of EUT and Planar Phantom
 Treo 600 Dual-Band CDMA Phone
 Lithium-ion Battery
 Fixed Stubby Antenna
 PCS CDMA Mode
 Channel 600 [1880.00 MHz]
 Conducted Power: 24.06 dBm
 Ambient Temp. 22.5°C; Fluid Temp. 21.7°C
 Date Tested: June 25, 2003



SAR_{Tot} [mW/g]

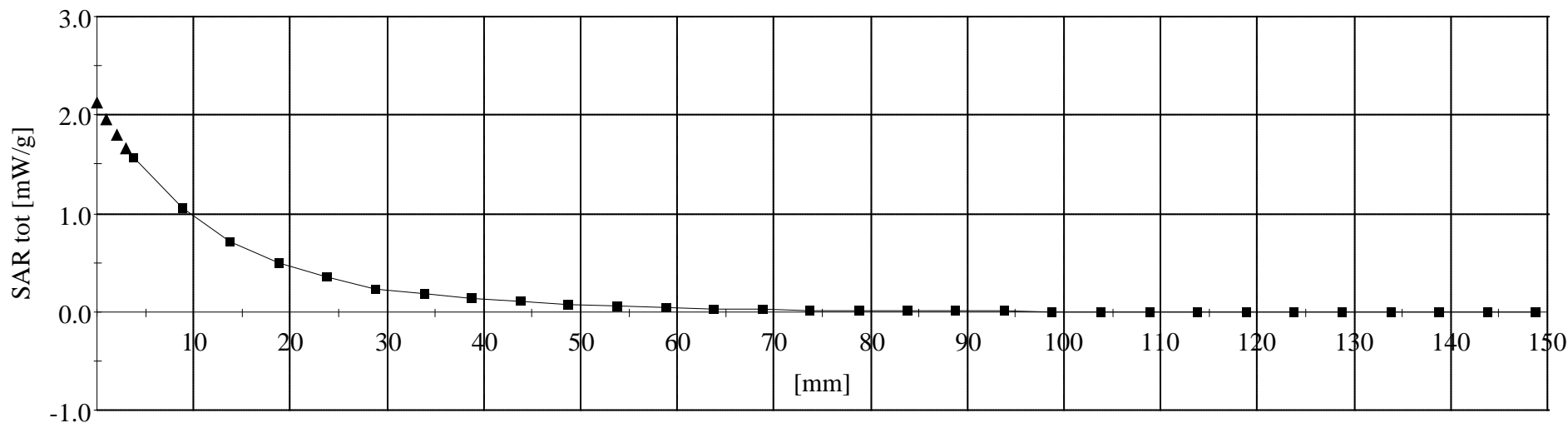


Handspring Inc. FCC ID: O8FBW

SAM Phantom; Flat Section
Probe: ET3DV6 - SN1387; ConvF(4.90,4.90,4.90); Crest factor: 1.0
1900 MHz Muscle: $\sigma = 1.58$ mho/m $\epsilon_r = 51.7$ $\rho = 1.00$ g/cm³

Z-Axis Extrapolation at Peak SAR Location

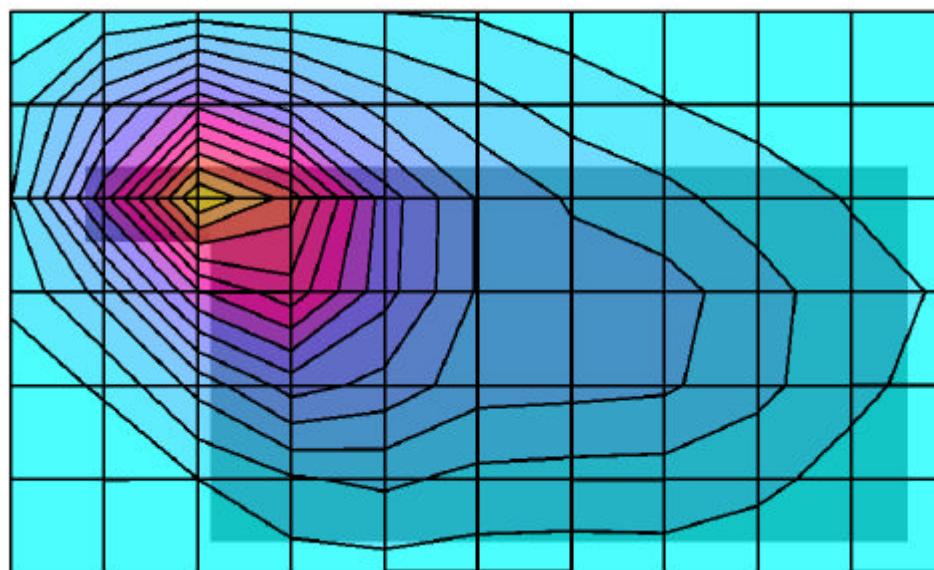
Body-worn SAR - Back Side of EUT with Ear-Microphone Accessory
1.0 cm Air Spacing between Back Side of EUT and Planar Phantom
Treo 600 Dual-Band CDMA Phone
Lithium-ion Battery
Fixed Stubby Antenna
PCS CDMA Mode
Channel 600 [1880.00 MHz]
Conducted Power: 24.06 dBm
Ambient Temp. 22.5°C; Fluid Temp. 21.7°C
Date Tested: June 25, 2003



Handspring Inc. FCC ID: O8FBW

SAM Phantom; Flat Section; Position: (270°,90°)
 Probe: ET3DV6 - SN1387; ConvF(4.90,4.90,4.90); Crest factor: 1.0
 1900 MHz Muscle: $\sigma = 1.58$ mho/m $\epsilon_r = 51.7$ $\rho = 1.00$ g/cm³
 Coarse: Dx = 15.0, Dy = 15.0, Dz = 10.0
 Cube 5x5x7
 SAR (1g): 0.567 mW/g, SAR (10g): 0.330 mW/g

Body-worn SAR - Back Side of EUT with Ear-Microphone Accessory
 1.0 cm Air Spacing between Back Side of EUT and Planar Phantom
 Treo 600 Dual-Band CDMA Phone
 Lithium-ion Battery
 Fixed Stubby Antenna
 PCS CDMA Mode
 Channel 1175 [1908.75 MHz]
 Conducted Power: 24.05 dBm
 Ambient Temp. 22.5°C; Fluid Temp. 21.7°C
 Date Tested: June 25, 2003



SAR_{Tot} [mW/g]

