



Specific Absorption Rate (SAR) Test Report
for
Palm, Inc.
on the
Smart Phone

Report Number : FA891114A
Brand Name : Palm
Model Name : T850EWW
FCC ID : O8F-SKYC
Date of Testing : Sep. 12, 2008 ~ Sep 17, 2008
Date of Report : Oct. 01, 2008
Date of Review : Oct. 01, 2008

- The test results refer exclusively to the tested model/sample only.
- Without written approval of SPORTON INTERNATIONAL INC., the test report shall not be reproduced except in full.
- Report Version: Rev. 01

SPORTON INTERNATIONAL INC.

No. 52, Hwa Ya 1st Rd., Hwa Ya Technology Park, Kwei-Shan Hsiang, Tao Yuan Hsien, Taiwan, R.O.C.



Table of Contents

1. Statement of Compliance	3
2. Administration Data	4
2.1 Testing Laboratory	4
2.2 Applicant.....	4
2.3 Application Details	4
3. General Information	5
3.1 Feature of Equipment Under Test	5
3.2 Product Photos	6
3.3 Applied Standards	6
3.4 Device Category and SAR Limits	6
3.5 Test Conditions	6
3.6.1 Ambient Condition	6
3.6.2 Test Configuration.....	6
3.6.3 FCC 3G SAR Measurement Procedures	8
4. Specific Absorption Rate (SAR).....	10
4.1 Introduction.....	10
4.2 SAR Definition	10
5. SAR Measurement Setup	11
5.1 DASY4 E-Field Probe System.....	12
5.1.1 ET3DV6 E-Field Probe Specification	12
5.1.2 ET3DV6 E-Field Probe Calibration	12
5.2 DATA Acquisition Electronics (DAE)	13
5.3 Robot.....	13
5.4 Measurement Server	14
5.5 SAM Twin Phantom	14
5.6 Device Holder for SAM Twin Phantom	16
5.7 Data Storage and Evaluation	17
5.7.1 Data Storage.....	17
5.7.2 Data Evaluation	17
5.8 Test Equipment List	19
6. Tissue Simulating Liquids.....	20
7. Uncertainty Assessment	22
8. SAR Measurement Evaluation	24
8.1 Purpose of System Performance check	24
8.2 System Setup	24
8.3 Validation Results	26
9. Description for DUT Testing Position.....	27
10. Measurement Procedures	29
10.1 Spatial Peak SAR Evaluation.....	29
10.2 Scan Procedures.....	30
10.3 SAR Averaged Methods	30
11. SAR Test Results	31
11.1 Conducted Power	31
11.2 Test Records for Head SAR Test	31
11.3 Test Records for Body SAR Test	32
11.4 Volume Scan	32
12. References.....	33
Appendix A - System Performance Check Data	
Appendix B - SAR Measurement Data	
Appendix C - Calibration Data	
Appendix D - Product Photos	
Appendix E - Test Setup Photos	

**1. Statement of Compliance**

The Specific Absorption Rate (SAR) maximum results found during testing for the **Palm, Inc. Smart Phone Palm T850EWW** are as follows (with expanded uncertainty 21.9%):

<Standalone SAR>

Position	CDMA2000 Cellular (W/Kg)	CDMA2000 PCS (W/Kg)
Head	1.37	1.4
Body	0.758	1.29

<Volume Scan SAR>

Position	Mode	Channel	Multi Band 1g SAR (W/kg)
Left Cheek	CDMA2000 Cellular	1013	1.24
	802.11g	6	
Right Cheek	CDMA2000 PCS	25	1.53
	802.11g	6	
Bottom with 1.5cm Gap	CDMA2000 Cellular	384	0.837
	802.11g	6	
Bottom with 1.5cm Gap	CDMA2000 PCS	1175	1.36
	802.11g	6	

They are in compliance with Specific Absorption Rate (SAR) for general population/uncontrolled exposure limits specified in FCC 47 CFR part 2 (2.1093) and ANSI/IEEE C95.1-1999 and had been tested in accordance with the measurement methods and procedures specified in IEEE P1528-2003, and OET Bulletin 65 Supplement C (Edition 01-01).

Approved by

Roy Wu
Manager



2. Administration Data

2.1 Testing Laboratory

Company Name : Sporton International Inc.
Address : No.52, Hwa-Ya 1st RD., Hwa Ya Technology Park, Kwei-Shan Hsiang,
TaoYuan Hsien, Taiwan, R.O.C.
Test Site : SAR01-HY
Telephone Number : 886-3-327-3456
Fax Number : 886-3-328-4978

2.2 Applicant

Company Name : Palm, Inc.
Address : 950 W Maude Ave. MS 22L02 Sunnyvale, CA 94085-2801

2.3 Application Details

Date of reception of application: Sep. 11, 2008
Start of test : Sep. 12, 2008
End of test : Sep. 17, 2008



3. General Information

3.1 Feature of Equipment Under Test

PRODUCT FEATURE & SPECIFICATION	
Equipment	Smart Phone
Brand Name	Palm
Model Name	T850EWW
FCC ID	O8F-SKYC
Tx Frequency Range	CDMA2000 Cellular : 824 MHz ~ 849 MHz CDMA2000 PCS : 1850 MHz ~ 1910 MHz
Rx Frequency Range	CDMA2000 Cellular : 869 ~ 894 MHz CDMA2000 PCS : 1930 ~ 1990 MHz
Maximum Output Power to Antenna	CDMA2000 Cellular (1xRTT) : 23.62 dBm CDMA2000 Cellular (1xEV-DO) : 24.15 dBm CDMA2000 PCS (1xRTT) : 23.28 dBm CDMA2000 PCS (1xEV-DO) : 23.90 dBm
Antenna Type	Fixed Internal Antenna
Type of Modulation	QPSK
DUT Stage	Identical Prototype

2nd component Source List

Component Model		
AC Adapter	Brand Name	Palm
	Model Name	5890-712V-02K0
	Part Number	157-10108-00
	Power Rating	I/P: 100-240Vac, 50-60Hz, 0.25A; O/P: 5Vdc, 1000mA
Battery	Brand Name	Palm
	Model Name	157-10105-00
	Power Rating	3.7Vdc, 1500mAh
	Type	Li-ion
Earphone	Brand Name	Palm
	Model Name	3363WW
	Part Number	180-10611-00
	Signal Line Type	0.9 meter non-shielded cable without ferrite core
USB Cable	Brand Name	Palm
	Model Name	3403WW
	Part Number	163-10274-00
	Signal Line Type	1.8 meter non-shielded cable without ferrite core

Remark:

1. The above EUT's information was declared by manufacturer. Please refer to the specifications or user's manual for more detailed description.
2. For accessories equipped with this EUT, please refer to the appendix of the external photo.



3.2 Product Photos

Refer to Appendix D.

3.3 Applied Standards

47 CFR Part 2 (2.1093),
IEEE C95.1-1999,
IEEE C95.3-2002,
IEEE P1528-2003, and
OET Bulletin 65 Supplement C (Edition 01-01)
KDB 941225 D01 v02
KDB 648474 D01 v01r03
KDB 248227 D01 v01r02

3.4 Device Category and SAR Limits

This device belongs to portable device category because its radiating structure is allowed to be used within 20 centimeters of the body of the user. Limit for General Population/Uncontrolled exposure should be applied for this device, it is 1.6 W/kg as averaged over any 1 gram of tissue.

3.5 Test Conditions

3.6.1 Ambient Condition

Ambient Temperature	20-24
Humidity	<60 %

3.6.2 Test Configuration

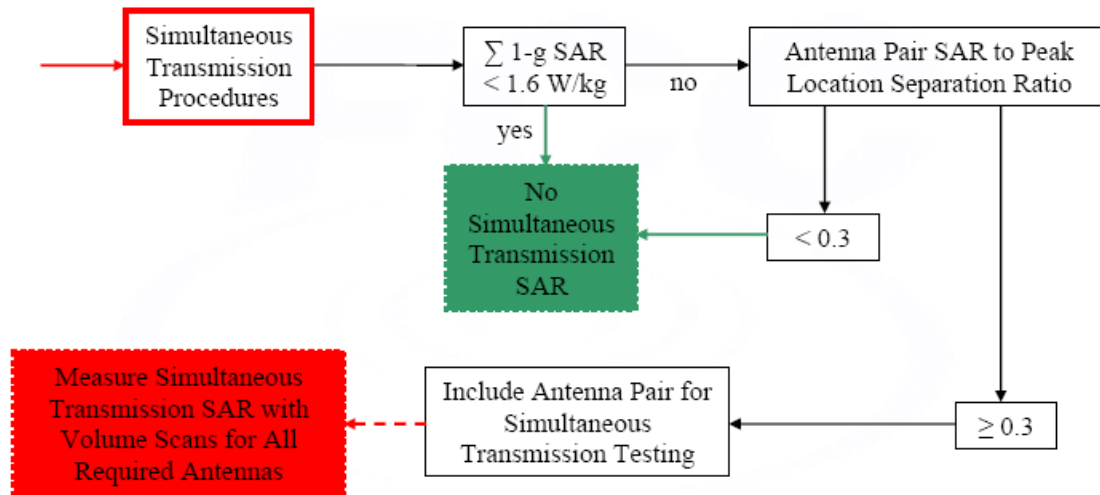
The DUT was set from the emulator to radiate maximum output power during all tests.

The device was controlled by using a base station emulator R&S CMU200. Communication between the device and the emulator was established by air link. The distance between the DUT and the antenna of the emulator is larger than 50 cm and the output power radiated from the emulator antenna is at least 30 dB smaller than the output power of DUT.

For SAR testing, EUT is in CDMA2000 link mode, and its crest factor is 1.

Measurements were performed on the lowest, middle, and highest channel for each testing position. However, measurements were performed only on the middle channel if the SAR is below 3 dB of limit.

According KDB 648474, the SAR summation of WWAN and WLAN is 1.75 W/kg, and SAR to peak location separation ratio of these 2 transmitters is 4.5, so the simultaneous transmission SAR (volume scan SAR) evaluation is required. The FCC rule is shown in the figure below.

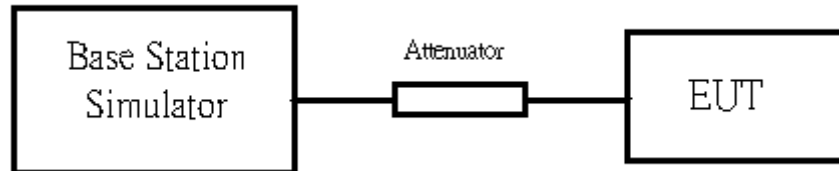


KDB 648474 Simultaneous Transmission SAR Procedures for a Cell Phone

3.6.3 FCC 3G SAR Measurement Procedures

The EUT was tested according to the requirements of the FCC SAR Measurement Procedures for 3G Devices.

CDMA2000 Setup Configuration:



Setup Configuration

1. The EUT was connected to Base Station, Agilent 8960.
Refer to the drawing of Setup Configuration.
2. The RF path loss was calibrated before the measurements.
3. A call was established between EUT and Base Station with following setting:
 - a. Set the test mode1 and test mode 3.
 - b. Set the Power control All Up for (FCH) and (FCH+SCH).
4. The transmitted maximum output power was recorded.

Call Setup Screen									
Call Control		Active Cell Operating Mode						Call Params	
Close Menu	<div>Mobile Station Information</div> <div>ESN (Hex):0x6C32D3AE</div> <div>ESN (Dec):108-03330990</div> <div>MCC:</div> <div>MNC:</div> <div>MSIN:3163712588</div> <div>Slot Class:Slotted</div> <div>Slot Cycle Index:2</div>						Cell Power		
							-86.00		
							dBm/1.23 MHz		
							Cell Band		
							US PCS		
							Channel		
							1175		
							Protocol Rev		
							6 (IS-2000)		
							Radio Config		
							(Fud1, Rvs1)		
							S055 (Loopback)		
							FCH Service Option Setup		
	<div>Background</div>		Active Cell Idle				Sys Type: IS-2000		
		IntRef		Offset					
						1 of 3			

Call Setup Screen			
Call Control	Active Cell Operating Mode		Call Parm's
Operating Mode			Cell Power
Active Cell			-86.00
			dBm/1.23 MHz
System Type			Cell Band
IS-2000			US PCS
			Channel
End Call			1175
			Protocol Rev
Paging INSI Setup			6 (IS-2000)
			Radio Config
Handoff Setup			(Fud3, Rvs3)
			S032 (+ SCH)
			FCH Service Option Setup
1 of 2	<div> <div>Background</div> <div>Active Cell</div> <div>Connected + Data</div> <div>Sys Type: IS-2000</div> </div>		1 of 3

Test Mode 3 in Radio Configuration 3 (Service Option32)

Call Setup Screen			
Call Control	Active Cell Operating Mode		Call Parm's
Operating Mode			Cell Power
Active Cell			-60.00
			dBm/1.23 MHz
			Cell Band
			US PCS
			Channel
Start Data Connection			675
			Application Config
Close Session			FTAP Rate
			307.2 kbps
Handoff Setup			(2 Slot, QPSK)
AT Max Power			RTAP Rate
23 dBm/1.23 MHz			153.6 kbps
1 of 3	<div> <div>Background</div> <div>Active Cell</div> <div>Session Open</div> <div>Sys Type: IS-856</div> <div>Logging: No Conn.</div> </div>		1 of 3

EV-DO setting with RTAP 153.6kbps

4. Specific Absorption Rate (SAR)

4.1 Introduction

SAR is related to the rate at which energy is absorbed per unit mass in an object exposed to a radio field. The SAR distribution in a biological body is complicated and is usually carried out by experimental techniques or numerical modeling. The standard recommends limits for two tiers of groups, occupational/controlled and general population/uncontrolled, based on a person's awareness and ability to exercise control over his or her exposure. In general, occupational/controlled exposure limits are higher than the limits for general population/uncontrolled.

4.2 SAR Definition

The SAR definition is the time derivative (rate) of the incremental energy (dW) absorbed by (dissipated in) an incremental mass (dm) contained in a volume element (dv) of a given density. The equation description is as below:

$$\text{SAR} = \frac{d}{dt} \left(\frac{dW}{dm} \right) = \frac{d}{dt} \left(\frac{dW}{\rho dv} \right)$$

SAR is expressed in units of Watts per kilogram (W/kg)

SAR measurement can be either related to the temperature elevation in tissue by

$$\text{SAR} = C \frac{\delta T}{\delta t}$$

, where C is the specific heat capacity, δT is the temperature rise and δt the exposure duration,

or related to the electrical field in the tissue by

$$\text{SAR} = \frac{\sigma |E|^2}{\rho}$$

, where σ is the conductivity of the tissue, ρ is the mass density of the tissue and E is the rms electrical field strength.

However for evaluating SAR of low power transmitter, electrical field measurement is typically applied.

5. SAR Measurement Setup

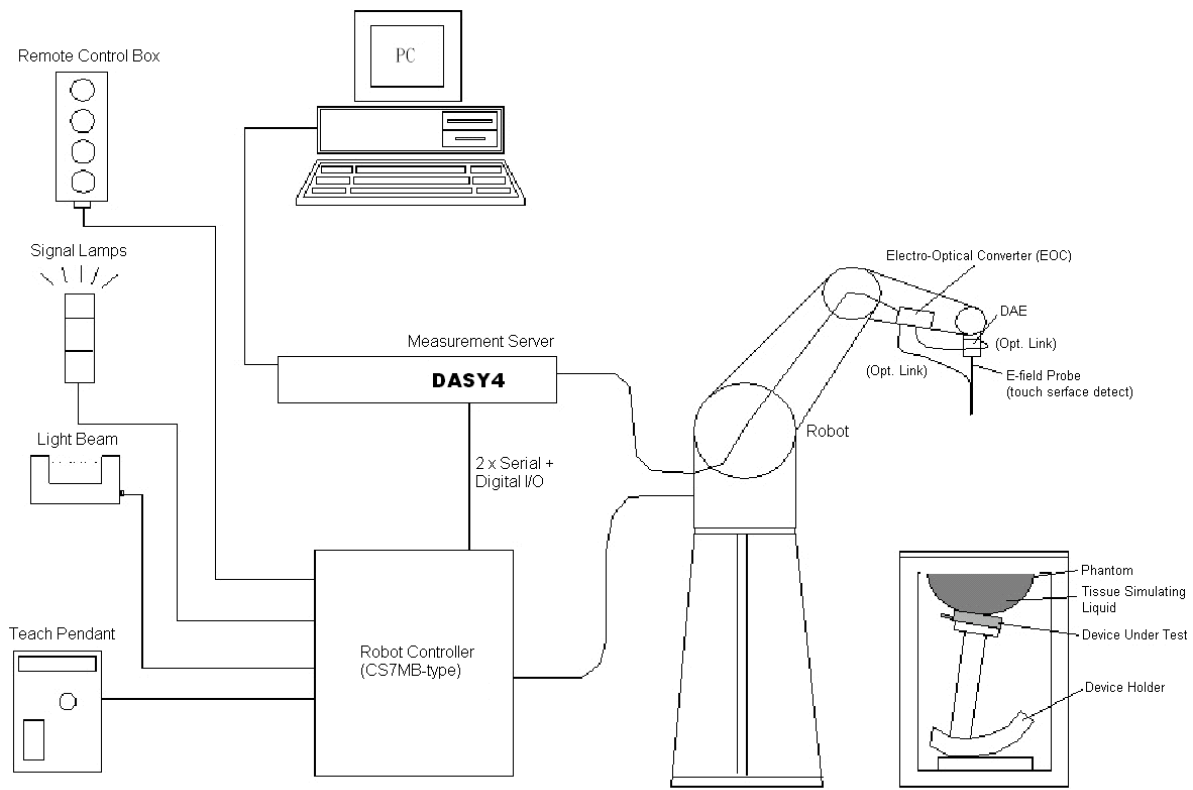


Fig. 5.1 DASY4 System

The DASY4 system for performance compliance tests is illustrated above graphically. This system consists of the following items:

- A standard high precision 6-axis robot with controller, a teach pendant and software
- A data acquisition electronic (DAE) attached to the robot arm extension
- A dosimetric probe equipped with an optical surface detector system
- The electro-optical converter (ECO) performs the conversion between optical and electrical signals
- A measurement server performs the time critical tasks such as signal filtering, control of the robot operation and fast movement interrupts.
- A probe alignment unit which improves the accuracy of the probe positioning
- A computer operating Windows XP
- DASY4 software
- Remote control with teach pendant and additional circuitry for robot safety such as warning lamps, etc.
- The SAM twin phantom
- A device holder
- Tissue simulating liquid
- Dipole for evaluating the proper functioning of the system

Some of the components are described in details in the following sub-sections.

5.1 DASY4 E-Field Probe System

The SAR measurement is conducted with the dosimetric probe ET3DV6 (manufactured by SPEAG). The probe is specially designed and calibrated for use in liquid with high permittivity. The dosimetric probe has special calibration in liquid at different frequency. This probe has a built in optical surface detection system to prevent from collision with phantom.

5.1.1 ET3DV6 E-Field Probe Specification

<ET3DV6>

Construction	Symmetrical design with triangular core Built-in optical fiber for surface detection system Built-in shielding against static charges PEEK enclosure material (resistant to organic solvents)
Frequency	10 MHz to 3 GHz
Directivity	± 0.2 dB in brain tissue (rotation around probe axis) ± 0.4 dB in brain tissue (rotation perpendicular to probe axis)
Dynamic Range	5 μ W/g to 100mW/g; Linearity: ±0.2dB
Surface Detection	± 0.2 mm repeatability in air and clear liquids on reflecting surface
Dimensions	Overall length: 330mm Tip length: 16mm Body diameter: 12mm Tip diameter: 6.8mm Distance from probe tip to dipole centers: 2.7mm
Application	General dosimetry up to 3GHz Compliance tests for mobile phones and Wireless LAN Fast automatic scanning in arbitrary phantoms



Fig. 5.2 Probe Setup on Robot

5.1.2 ET3DV6 E-Field Probe Calibration

Each probe needs to be calibrated according to a dosimetric assessment procedure with accuracy better than $\pm 10\%$. The spherical isotropy shall be evaluated and within ± 0.25 dB. The sensitivity parameters (NormX, NormY, and NormZ), the diode compression parameter (DCP) and the conversion factor (ConvF) of the probe are tested. The calibration data are as below:

➤ ET3DV6 sn1787

Sensitivity	X axis : 1.63 μ V		Y axis : 1.67 μ V		Z axis : 2.18 μ V
Diode compression point	X axis : 90 mV		Y axis : 93 mV		Z axis : 92 mV
Conversion factor (Head / Body)	Frequency (MHz)	X axis	Y axis	Z axis	
	800~1000	6.06 / 5.91	6.06 / 5.91	6.06 / 5.91	
	1850~2050	5.01 / 4.49	5.01 / 4.49	5.01 / 4.49	
Boundary effect (Head / Body)	Frequency (MHz)	Alpha	Depth		
	800~1000	0.30 / 0.31	2.80 / 2.98		
	1850~2050	0.59 / 0.68	1.96 / 1.95		

NOTE: The probe parameters have been calibrated by the SPEAG.

➤ **ES3DV3 sn3071**

Sensitivity	X axis : 1.12 μ V		Y axis : 1.35 μ V		Z axis : 1.34 μ V
Diode compression point	X axis : 94 mV		Y axis : 93 mV		Z axis : 92 mV
Conversion factor (Head / Body)	Frequency (MHz)	X axis	Y axis	Z axis	
	800~1000	6.06 / 5.73	6.06 / 5.73	6.06 / 5.73	
	1710~1910	4.78 / 4.63	4.78 / 4.63	4.78 / 4.63	
	1850~2050	4.59 / 4.37	4.59 / 4.37	4.59 / 4.37	
Boundary effect (Head / Body)	Frequency (MHz)	Alpha		Depth	
	800~1000	1.00 / 1.00		1.08 / 1.12	
	1710~1910	0.97 / 0.90		1.11 / 1.19	
	1850~2050	0.85 / 0.75		1.22 / 1.32	

NOTE: The probe parameters have been calibrated by the SPEAG.

5.2 DATA Acquisition Electronics (DAE)

The data acquisition electronics (DAE3) consists of a highly sensitive electrometer-grade preamplifier with auto-zeroing, a channel and gain-switching multiplexer, a fast 16 bit AD-converter and a command decoder and control logic unit. Transmission to the measurement server is accomplished through an optical downlink for data and status information as well as an optical uplink for commands and the clock.

The mechanical probe mounting device includes two different sensor systems for frontal and sideways probe contacts. They are used for mechanical surface detection and probe collision detection.

The input impedance of the DAE3 is 200M Ohm; the inputs are symmetrical and floating. Common mode rejection is above 80dB.

5.3 Robot

The DASY4 system uses the high precision robots RX90BL type out of the newer series from Stäubli SA (France). For the 6-axis controller DASY4 system, the CS7MB robot controller version from Stäubli is used. The RX robot series have many features that are important for our application:

- High precision (repeatability 0.02 mm)
- High reliability (industrial design)
- Jerk-free straight movements
- Low ELF interference (the closed metallic construction shields against motor control fields)
- 6-axis controller

5.4 Measurement Server

The DASY4 measurement server is based on a PC/104 CPU board with
166 MHz CPU
32 MB chipset and
64 MB RAM.

Communication with
the DAE4 electronic box
the 16-bit AD-converter system for optical detection and digital I/O interface.

The measurement server performs all the real-time data evaluation for field measurements and surface detection, controls robot movements and handles safety operations.

5.5 SAM Twin Phantom

The SAM twin phantom is a fiberglass shell phantom with 2mm shell thickness (except the ear region where shell thickness increases to 6mm). It has three measurement areas:

- Left head
- Right head
- Flat phantom

The bottom plate contains three pair of bolts for locking the device holder. The device holder positions are adjusted to the standard measurement positions in the three sections. A white cover is provided to tap the phantom during off-periods to prevent water evaporation and changes in the liquid parameters. On the phantom top, three reference markers are provided to identify the phantom position with respect to the robot.

The phantom can be used with the following tissue simulating liquids:

- *Water-sugar based liquid
- *Glycol based liquids

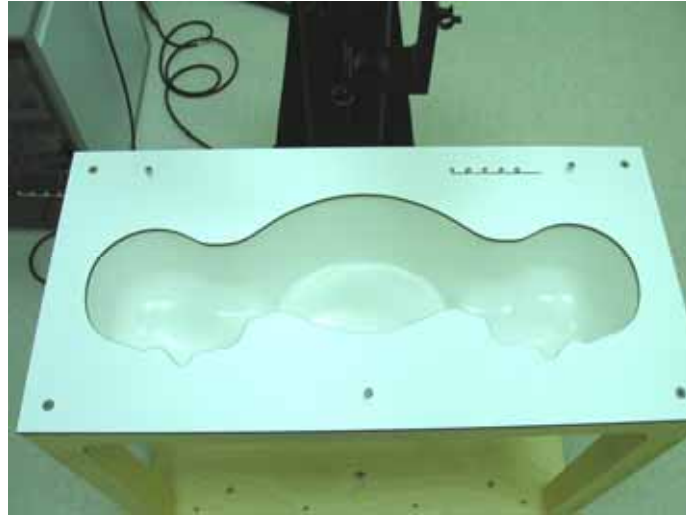


Fig. 5.3 Top View of Twin Phantom



Fig. 5.4 Bottom View of Twin Phantom

5.6 Device Holder for SAM Twin Phantom

The SAR in the Phantom is approximately inversely proportional to the square of the distance between the source and the liquid surface. For a source in 5 mm distance, a positioning uncertainty of $\pm 0.5\text{mm}$ would produce a SAR uncertainty of $\pm 20\%$. An accurate device position is therefore crucial for accurate and repeatable measurement. The position in which the devices must be measured, are defined by the standards.

The DASY4 device holder is designed to cope with different positions given in the standard. It has two scales for the device rotation (with respect to the body axis) and the device inclination (with respect to the line between the ear reference points). The rotation centers for both scales is the ear reference point (EPR).

Thus the device needs no repositioning when changing the angles.

The DASY4 device holder has been made out of low-loss POM material having the following dielectric parameters: relative permittivity $\epsilon_r = 3$ and loss tangent $\delta = 0.02$. The amount of dielectric material has been reduced in the closest vicinity of the device, since measurements have suggested that the influence of the clamp on the test results could thus be lowered.



Fig. 5.5 Device Holder

5.7 Data Storage and Evaluation

5.7.1 Data Storage

The DASY4 software stores the assessed data from the data acquisition electronics as raw data (in microvolt readings from the probe sensors), together with all the necessary software parameters for the data evaluation (probe calibration data, liquid parameters and device frequency and modulation data) in measurement files with the extension .DA4. The post-processing software evaluates the desired unit and format for output each time the data is visualized or exported. This allows verification of the complete software setup even after the measurement and allows correction of erroneous parameter settings. For example, if a measurement has been performed with an incorrect crest factor parameter in the device setup, the parameter can be corrected afterwards and the data can be reevaluated.

The measured data can be visualized or exported in different units or formats, depending on the selected probe type (e.g., [V/m], [A/m], [mW/g]). Some of these units are not available in certain situations or give meaningless results, e.g., a SAR-output in a non-lossy media, will always be zero. Raw data can also be exported to perform the evaluation with other software packages.

5.7.2 Data Evaluation

The DASY4 post-processing software (SEMCAD) automatically executes the following procedures to calculate the field units from the microvolt readings at the probe connector. The parameters used in the evaluation are stored in the configuration modules of the software :

Probe parameters :	- Sensitivity	$Norm_i, a_{i0}, a_{i1}, a_{i2}$
	- Conversion factor	$ConvF_i$
	- Diode compression point	dcp_i
Device parameters :	- Frequency	f
	- Crest factor	cf
Media parameters :	- Conductivity	
	- Density	

These parameters must be set correctly in the software. They can be found in the component documents or they can be imported into the software from the configuration files issued for the DASY4 components. In the direct measuring mode of the multi-meter option, the parameters of the actual system setup are used. In the scan visualization and export modes, the parameters stored in the corresponding document files are used.

The first step of the evaluation is a linearization of the filtered input signal to account for the compression characteristics of the detector diode. The compensation depends on the input signal, the diode type and the DC-transmission factor from the diode to the evaluation electronics. If the exciting field is pulsed, the crest factor of the signal must be known to correctly compensate for peak power.

The formula for each channel can be given as :

$$V_i = U_i + U_i^2 \cdot \frac{cf}{dcp_i}$$

with V_i = compensated signal of channel i ($i = x, y, z$)
 U_i = input signal of channel i ($i = x, y, z$)
 cf = crest factor of exciting field (DASY parameter)
 dcp_i = diode compression point (DASY parameter)

From the compensated input signals, the primary field data for each channel can be evaluated :

$$\text{E-field probes : } E_i = \sqrt{\frac{V_i}{\text{Norm}_i \text{ConvF}}}$$

$$\text{H-field probes : } H_i = \sqrt{V_i \frac{a_{i0} + a_{i1}f + a_{i2}f^2}{f}}$$

with V_i = compensated signal of channel i ($i = x, y, z$)
 Norm_i = sensor sensitivity of channel i ($i = x, y, z$)
 $\mu \text{ V}/(\text{V}/\text{m})^2$ for E-field Probes
 ConvF = sensitivity enhancement in solution
 a_{ij} = sensor sensitivity factors for H-field probes
 f = carrier frequency [GHz]
 E_i = electric field strength of channel i in V/m
 H_i = magnetic field strength of channel i in A/m

The RSS value of the field components gives the total field strength (Hermitian magnitude) :

$$E_{tot} = \sqrt{E_x^2 + E_y^2 + E_z^2}$$

The primary field data are used to calculate the derived field units.

$$\text{SAR} = E_{tot}^2 \cdot \frac{\sigma}{\rho \cdot 1000}$$

with SAR = local specific absorption rate in mW/g
 E_{tot} = total field strength in V/m
 σ = conductivity in [mho/m] or [Siemens/m]
 ρ = equivalent tissue density in g/cm³

* Note that the density is set to 1, to account for actual head tissue density rather than the density of the tissue simulating liquid.

The power flow density is calculated assuming the excitation field to be a free space field.

$$P_{pwe} = \frac{E_{tot}^2}{3770} \quad \text{or} \quad P_{pwe} = H_{tot}^2 \cdot 37.7$$

with P_{pwe} = equivalent power density of a plane wave in mW/cm²
 E_{tot} = total electric field strength in V/m
 H_{tot} = total magnetic field strength in A/m

**5.8 Test Equipment List**

Manufacturer	Name of Equipment	Type/Model	Serial Number	Calibration	
				Last Cal.	Due Date
SPEAG	Dosimetric E-Filed Probe	ET3DV6	1787	Aug. 26, 2008	Aug. 25, 2009
SPEAG	Dosimetric E-Filed Probe	ES3DV3	3071	Jan. 29, 2008	Jan. 28, 2009
SPEAG	835MHz System Validation Kit	D835V2	499	Mar. 17, 2008	Mar. 16, 2010
SPEAG	1900MHz System Validation Kit	D1900V2	5d041	Mar. 28, 2008	Mar. 27, 2010
SPEAG	Data Acquisition Electronics	DAE3	577	Nov. 16, 2007	Nov. 15, 2008
SPEAG	Data Acquisition Electronics	DAE3	393	Aug. 25, 2008	Aug. 24, 2009
SPEAG	Device Holder	N/A	N/A	NCR	NCR
SPEAG	SAM Phantom	QD 000 P40 C	TP-1303	NCR	NCR
SPEAG	SAM Phantom	QD 000 P40 C	TP-1446	NCR	NCR
SPEAG	SAM Phantom	QD 000 P40 C	TP-1383	NCR	NCR
SPEAG	ELI4 Phantom	QD 0VA 001 BB	1029	NCR	NCR
Agilent	PNA Series Network Analyzer	E8358A	US40260131	Apr. 02, 2008	Apr. 01, 2009
Agilent	Wireless Communication Test Set	E5515C	GB46311322	Dec. 22, 2006	Dec. 21, 2008
R&S	Universal Radio Communication Tester	CMU200	103937	Oct. 19, 2007	Oct. 18, 2008
Agilent	Dielectric Probe Kit	85070D	US01440205	NCR	NCR
Agilent	Dual Directional Coupler	778D	50422	NCR	NCR
AR	Power Amplifier	5S1G4M2	0328767	NCR	NCR
R&S	Power Meter	NRVD	101394	Oct. 31, 2007	Oct. 30, 2008
R&S	Power Sensor	NRV-Z1	100130	Oct. 31, 2007	Oct. 30, 2008

Table 5.1 Test Equipment List

6. Tissue Simulating Liquids

For the measurement of the field distribution inside the SAM phantom with DASY4, the phantom must be filled with around 25 liters of homogeneous tissue simulating liquid. The liquid height from the ear reference point (ERP) of the phantom to the liquid top surface is (head SAR) or from the flat phantom to the liquid top surface (body SAR) is 15.2cm.

The following ingredients for tissue simulating liquid are used:

- **Water:** deionized water (pure H₂O), resistivity $\geq 16\text{M}\Omega$ - as basis for the liquid
- **Sugar:** refined sugar in crystals, as available in food shops – to reduce relative permittivity
- **Salt:** pure NaCl – to increase conductivity
- **Cellulose:** Hydroxyethyl-cellulose, medium viscosity (75-125 mPa.s, 2% in water, 20°C), CAS#54290-to increase viscosity and to keep sugar in solution.
- **Preservative:** Preventol D-7 Bayer AG, D-51368 Leverkusen, CAS#55965-84-9- to prevent the spread of bacteria and molds.
- **DGMBE:** Deithlenglycol-monobuthyl ether (DGMBE), Fluka Chemie GmbH, CAS#112-34-5 – to reduce relative permittivity.

Table 6.1 gives the recipes for one liter of head and body tissue simulating liquid for frequency band 850MHz and 1900 MHz.

Ingredient	HSL-850	MSL-850	HSL-1900	MSL-1900
Water	532.98 g	631.68 g	552.42 g	716.56 g
Cellulose	0 g	0 g	0 g	0 g
Salt	18.3 g	11.72 g	3.06 g	4.0 g
Preventol D-7	2.4 g	1.2 g	0 g	0 g
Sugar	766.0 g	600.0 g	0 g	0 g
DGMBE	0 g	0 g	444.52 g	300.67 g
Total amount	1 liter (1.3 kg)	1 liter (1.3 kg)	1 liter (1.0 kg)	1 liter (1.0 kg)
Dielectric Parameters at 22°	f = 835 MHz $\epsilon_r = 41.5 \pm 5\%$, $\sigma = 0.90 \pm 5\%$ S/m	f = 835 MHz $\epsilon_r = 55.2 \pm 5\%$, $\sigma = 0.97 \pm 5\%$ S/m	f = 1900 MHz $\epsilon_r = 40.0 \pm 5\%$, $\sigma = 1.4 \pm 5\%$ S/m	f = 1900 MHz $\epsilon_r = 53.3 \pm 5\%$, $\sigma = 1.52 \pm 5\%$ S/m

Table 6.1 Recipes for Tissue Simulating Liquid

The dielectric parameters of the liquids were verified prior to the SAR evaluation using an Agilent 85070D Dielectric Probe Kit and an Agilent Network Analyzer.

Table 6.2 shows the measuring results for head and muscle simulating liquid.

Band	Position	Temperature ()	Frequency (MHz)	Conductivity (σ)	Permittivity (ϵ_r)	Measurement Date
CDMA2000 Cellular	Head	21.7	824.70	0.904	41.0	Sep. 17, 2008
			836.52	0.915	40.9	
			848.31	0.923	40.7	
	Body	21.6	824.70	0.980	56.3	Sep. 17, 2008
			836.52	0.991	56.2	
			848.31	0.999	56.1	
CDMA2000 PCS	Head	21.5	1851.25	1.36	41.9	Sep. 12, 2008
			1880.00	1.40	41.8	
			1908.75	1.44	41.7	
	Head	21.2	1851.25	1.35	41.8	Sep. 15, 2008
			1880.00	1.39	41.8	
			1908.75	1.43	41.7	
	Body	21.6	1851.25	1.46	52.9	Sep. 16, 2008
			1880.00	1.48	52.9	
			1908.75	1.54	52.2	

Table 6.2 Measuring Results for Simulating Liquid

The measuring data are consistent with $\epsilon_r = 41.5 \pm 5\%$ and $\sigma = 0.9 \pm 5\%$ for head SAR of cellular band, $\epsilon_r = 55.2 \pm 5\%$ and $\sigma = 0.97 \pm 5\%$ for body SAR of cellular band, $\epsilon_r = 40.0 \pm 5\%$ and $\sigma = 1.4 \pm 5\%$ for head SAR of PCS band, and $\epsilon_r = 53.3 \pm 5\%$ and $\sigma = 1.52 \pm 5\%$ for body SAR of PCS band.

7. Uncertainty Assessment

The component of uncertainty may generally be categorized according to the methods used to evaluate them. The evaluation of uncertainty by the statistical analysis of a series of observations is termed a Type A evaluation of uncertainty. The evaluation of uncertainty by means other than the statistical analysis of a series of observation is termed a Type B evaluation of uncertainty. Each component of uncertainty, however evaluated, is represented by an estimated standard deviation, termed standard uncertainty, which is determined by the positive square root of the estimated variance.

A Type A evaluation of standard uncertainty may be based on any valid statistical method for treating data. This includes calculating the standard deviation of the mean of a series of independent observations; using the method of least squares to fit a curve to the data in order to estimate the parameter of the curve and their standard deviations; or carrying out an analysis of variance in order to identify and quantify random effects in certain kinds of measurement.

A type B evaluation of standard uncertainty is typically based on scientific judgment using all of the relevant information available. These may include previous measurement data, experience and knowledge of the behavior and properties of relevant materials and instruments, manufacture's specification, data provided in calibration reports and uncertainties assigned to reference data taken from handbooks. Broadly speaking, the uncertainty is either obtained from an outdoor source or obtained from an assumed distribution, such as the normal distribution, rectangular or triangular distributions indicated in Table 7.1

Uncertainty Distributions	Normal	Rectangular	Triangular	U-shape
Multiplying factor^(a)	1/k ^(b)	1/ 3	1/ 6	1/ 2

(a) standard uncertainty is determined as the product of the multiplying factor and the estimated range of variations in the measured quantity

(b) is the coverage factor

Table 7.1 Multiplying Factors for Various Distributions

The combined standard uncertainty of the measurement result represents the estimated standard deviation of the result. It is obtained by combining the individual standard uncertainties of both Type A and Type B evaluation using the usual “root-sum-squares” (RSS) methods of combining standard deviations by taking the positive square root of the estimated variances.

Expanded uncertainty is a measure of uncertainty that defines an interval about the measurement result within which the measured value is confidently believed to lie. It is obtained by multiplying the combined standard uncertainty by a coverage factor. Typically, the coverage factor ranges from 2 to 3. Using a coverage factor allows the true value of a measured quantity to be specified with a defined probability within the specified uncertainty range. For purpose of this document, a coverage factor two is used, which corresponds to confidence interval of about 95 %. The DASY4 uncertainty Budget is showed in Table 7.2.



Error Description	Uncertainty Value \pm %	Probability Distribution	Divisor	Ci (1g)	Standard Unc. (1g)	vi or Veff
Measurement Equipment						
Probe Calibration	± 5.9 %	Normal	1	1	± 5.9 %	∞
Axial Isotropy	± 4.7 %	Rectangular	$\sqrt{3}$	0.7	± 1.9 %	∞
Hemispherical Isotropy	± 9.6 %	Rectangular	$\sqrt{3}$	0.7	± 3.9 %	∞
Boundary Effects	± 1.0 %	Rectangular	$\sqrt{3}$	1	± 0.6 %	∞
Linearity	± 4.7 %	Rectangular	$\sqrt{3}$	1	± 2.7 %	∞
System Detection Limits	± 1.0 %	Rectangular	$\sqrt{3}$	1	± 0.6 %	∞
Readout Electronics	± 0.3 %	Normal	1	1	± 0.3 %	∞
Response Time	± 0.8 %	Rectangular	$\sqrt{3}$	1	± 0.5 %	∞
Integration Time	± 2.6 %	Rectangular	$\sqrt{3}$	1	± 1.5 %	∞
RF Ambient Noise	± 3.0 %	Rectangular	$\sqrt{3}$	1	± 1.7 %	∞
RF Ambient Reflections	± 3.0 %	Rectangular	$\sqrt{3}$	1	± 1.7 %	∞
Probe Positioner	± 0.4 %	Rectangular	$\sqrt{3}$	1	± 0.2 %	∞
Probe Positioning	± 2.9 %	Rectangular	$\sqrt{3}$	1	± 1.7 %	∞
Max. SAR Eval.	± 1.0 %	Rectangular	$\sqrt{3}$	1	± 0.6 %	∞
Test Sample Related						
Device Positioning	± 2.9 %	Normal	1	1	± 2.9	145
Device Holder	± 3.6 %	Normal	1	1	± 3.6	5
Power Drift	± 5.0 %	Rectangular	$\sqrt{3}$	1	± 2.9	∞
Phantom and Setup						
Phantom Uncertainty	± 4.0 %	Rectangular	$\sqrt{3}$	1	± 2.3	∞
Liquid Conductivity (target)	± 5.0 %	Rectangular	$\sqrt{3}$	0.64	± 1.8	∞
Liquid Conductivity (meas.)	± 2.5 %	Normal	1	0.64	± 1.6	∞
Liquid Permittivity (target)	± 5.0 %	Rectangular	$\sqrt{3}$	0.6	± 1.7	∞
Liquid Permittivity (meas.)	± 2.5 %	Normal	1	0.6	± 1.5	∞
Combined Standard Uncertainty					± 10.9	387
Coverage Factor for 95 %		K=2				
Expanded uncertainty (Coverage factor = 2)					± 21.9	

Table 7.2 Uncertainty Budget of DASY4

8. SAR Measurement Evaluation

Each DASY4 system is equipped with one or more system validation kits. These units, together with the predefined measurement procedures within the DASY4 software, enable the user to conduct the system performance check and system validation. System validation kit includes a dipole, tripod holder to fix it underneath the flat phantom and a corresponding distance holder.

8.1 Purpose of System Performance check

The system performance check verifies that the system operates within its specifications. System and operator errors can be detected and corrected. It is recommended that the system performance check be performed prior to any usage of the system in order to guarantee reproducible results. The system performance check uses normal SAR measurements in a simplified setup with a well characterized source. This setup was selected to give a high sensitivity to all parameters that might fail or vary over time. The system check does not intend to replace the calibration of the components, but indicates situations where the system uncertainty is exceeded due to drift or failure.

8.2 System Setup

In the simplified setup for system evaluation, the DUT is replaced by a calibrated dipole and the power source is replaced by a continuous wave which comes from a signal generator at frequency 835 MHz and 1900 MHz. The calibrated dipole must be placed beneath the flat phantom section of the SAM twin phantom with the correct distance holder. The distance holder should touch the phantom surface with a light pressure at the reference marking and be oriented parallel to the long side of the phantom. The equipment setup is shown below:

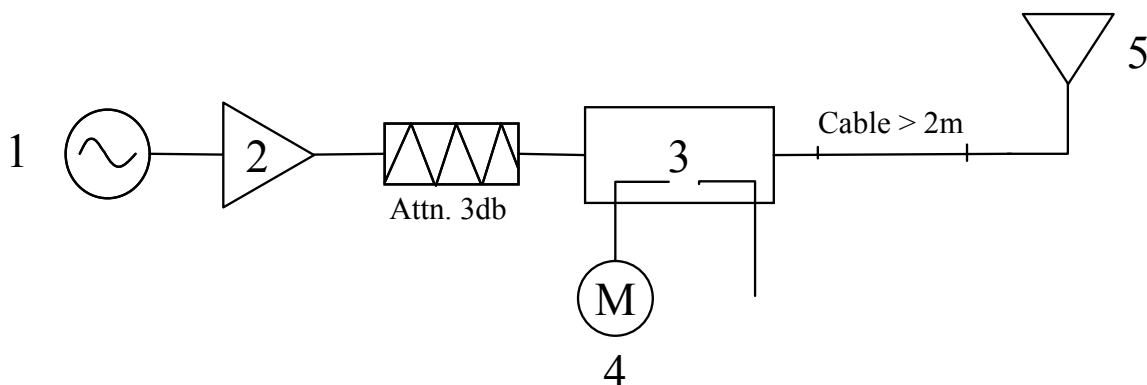


Fig. 8.1 System Setup for System Evaluation

1. Signal Generator
2. Amplifier
3. Directional Coupler
4. Power Meter
5. 835 MHz or 1900 MHz Dipole

The output power on dipole port must be calibrated to 20dBm (100mW) before dipole is connected.



Fig 8.2 Dipole Setup

8.3 Validation Results

Comparing to the original SAR value provided by SPEAG, the validation data should be within its specification of 10 %. Table 8.1 shows the target SAR and measured SAR after normalized to 1W input power.

Frequency	Position	SAR	Target (W/kg)	Measurement data (W/kg)	Variation	Measurement Date
835MHz	Head	SAR (1g)	9.16	8.88	-3.1 %	Sep. 17, 2008
		SAR (10g)	6.0	5.79	-3.5 %	
	Body	SAR (1g)	9.52	10.3	8.2 %	Sep. 17, 2008
		SAR (10g)	6.37	6.84	7.4 %	
1900MHz	Head	SAR (1g)	39.5	38.9	-1.5 %	Sep. 12, 2008
		SAR (10g)	20.6	19.8	-3.9 %	
	Head	SAR (1g)	39.5	41.0	3.8 %	Sep. 15, 2008
		SAR (10g)	20.6	21.3	3.4 %	
	Body	SAR (1g)	40.1	39.9	-0.5 %	Sep. 16, 2008
		SAR (10g)	21.3	21.2	-0.5 %	

Table 8.1 Target and Measurement Data Comparison

The table above indicates the system performance check can meet the variation criterion.

9. Description for DUT Testing Position

This DUT was tested in six different positions. They are right cheek, right tilted, left cheek, left tilted, face with 1.5cm Gap and bottom with 1.5cm Gap as illustrated below:

1) “Cheek Position”

- i) To position the device with the vertical center line of the body of the device and the horizontal line crossing the center piece in a plane parallel to the sagittal plane of the phantom. While maintaining the device in this plane, align the vertical center line with the reference plane containing the three ear and mouth reference point (M, RE and LE) and align the center of the ear piece with the line RE-LE.
- ii) To move the device towards the phantom with the ear piece aligned with the line LE-RE until the phone touched the ear. While maintaining the device in the reference plane and maintaining the phone contact with the ear, move the bottom of the phone until any point on the front side is in contact with the cheek of the phantom or until contact with the ear is lost (see Fig. 9.1).

2) “Tilted Position”

- i) To position the device in the “cheek” position described above.
- ii) While maintaining the device the reference plane described above and pivoting against the ear, move it outward away from the mouth by an angle of 15 degrees or until contact with the ear is lost (see Fig. 9.2).

3) “Body Worn”

- i) To position the device parallel to the phantom surface.
- ii) To adjust the phone parallel to the flat phantom.
- iii) To adjust the distance between the EUT surface and the flat phantom to 1.5 cm.

Remark: Please refer to Appendix E for the test setup photos.

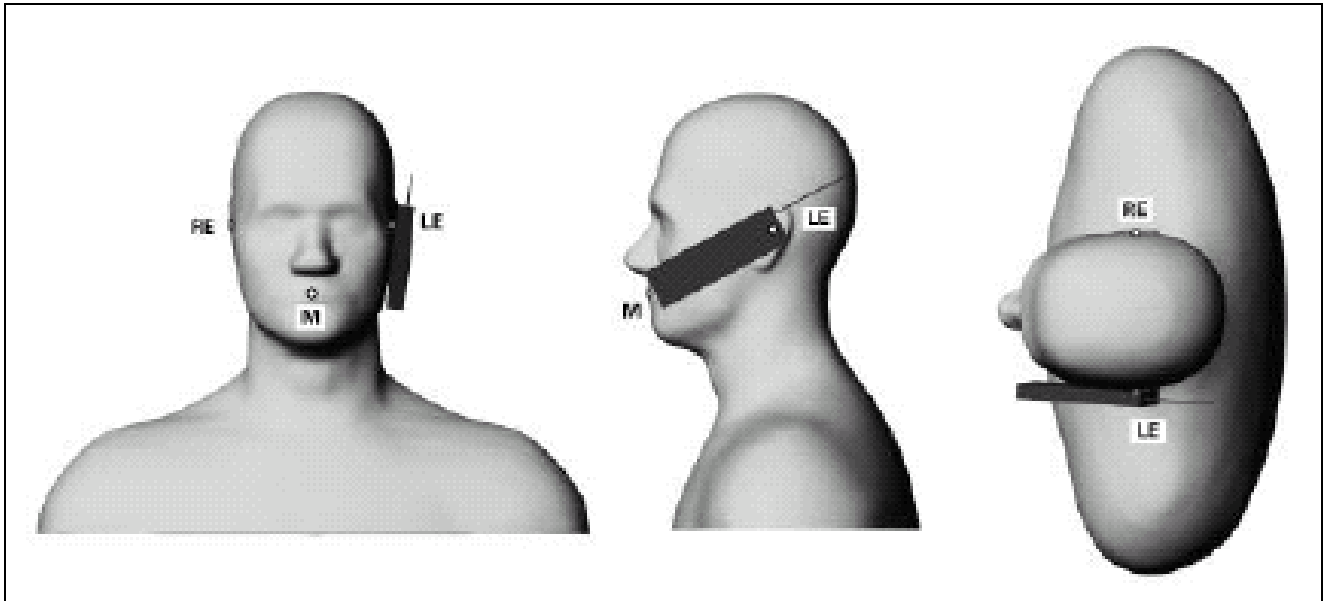


Fig. 9.1 Phone Position 1, “Cheek” or “Touch” Position. The reference points for the right ear (RE), left ear (LE) and mouth (M), which define the plane for phone positioning, are indicated.

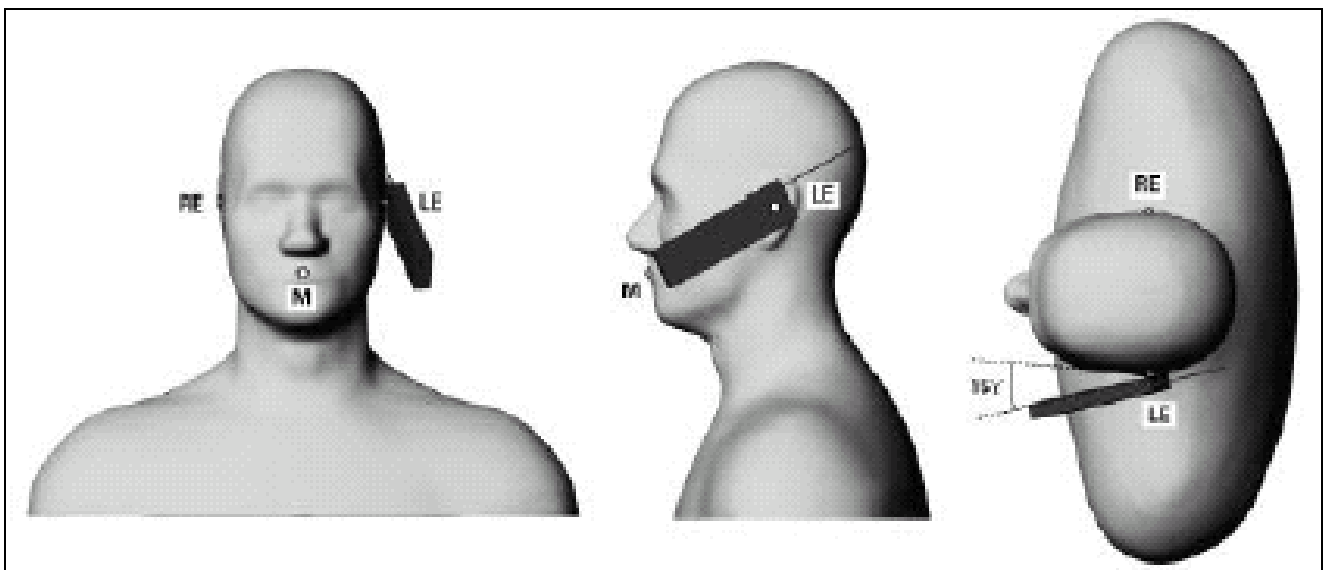


Fig. 9.2 Phone Position 2, “Tilted Position”. The reference point for the right ear (RE), left ear (LE) and mouth (M), which define the plane for phone positioning, are indicated.

10. Measurement Procedures

The measurement procedures are as follows:

- Linking DUT with base station emulator CMU200 in middle channel
- Setting CMU200 to allow DUT to radiate maximum output power
- Measuring output power through RF cable and power meter
- Placing the DUT in the positions described in the last section
- Setting scan area, grid size and other setting on the DASY4 software
- Taking data for the middle channel on each testing position
- Finding out the largest SAR result on these testing positions of each band
- Measuring output power and SAR results for the low and high channels in this worst case testing position

According to the IEEE P1528 draft standard, the recommended procedure for assessing the peak spatial-average SAR value consists of the following steps:

- Power reference measurement
- Area scan
- Zoom scan
- Power reference measurement

10.1 Spatial Peak SAR Evaluation

The procedure for spatial peak SAR evaluation has been implemented according to the IEEE1528-2003 standard. It can be conducted for 1g and 10g, as well as for user-specific masses. The DASY4 software includes all numerical procedures necessary to evaluate the spatial peak SAR value.

Base on the Draft: SCC-34, SC-2, WG-2-Computational Dosimetry, IEEE P1528/D1.2 (Recommended Practice for Determining the Peak Spatial-Average Specific Absorption Rate (SAR) in the Human Head from Wireless Communications Devices: Measurement Techniques), a new algorithm has been implemented. The spatial-peak SAR can be computed over any required mass.

The base for the evaluation is a "cube" measurement. The measured volume must include the 1g and 10g cubes with the highest averaged SAR values. For that purpose , the center of the measured volume is aligned to the interpolated peak SAR value of a previously performed area scan.



The entire evaluation of the spatial peak values is performed within the post-processing engine (SEMCAD). The system always gives the maximum values for the 1g and 10g cubes. The algorithm to find the cube with highest averaged SAR is divided into the following stages:

- extraction of the measured data (grid and values) from the Zoom Scan
- calculation of the SAR value at every measurement point based on all stored data (A/D values and measurement parameters)
- generation of a high-resolution mesh within the measured volume
- interpolation of all measured values from the measurement grid to the high-resolution grid
- extrapolation of the entire 3-D field distribution to the phantom surface over the distance from sensor to surface
- calculation of the averaged SAR within masses of 1g and 10g

10.2 Scan Procedures

First Area Scan is used to locate the approximate location(s) of the local peak SAR value(s). The measurement grid within an Area Scan is defined by the grid extent, grid step size and grid offset. Next, in order to determine the EM field distribution in a three-dimensional spatial extension, Zoom Scan is required. The Zoom Scan measures 5x5x7 points with step size 8, 8 and 5 mm. The Zoom Scan is performed around the highest E-field value to determine the averaged SAR-distribution over 1 g.

10.3 SAR Averaged Methods

In DASY4, the interpolation and extrapolation are both based on the modified Quadratic Shepard's method. The interpolation scheme combines a least-square fitted function method and a weighted average method which are the two basic types of computational interpolation and approximation.

Extrapolation routines are used to obtain SAR values between the lowest measurement points and the inner phantom surface. The extrapolation distance is determined by the surface detection distance and the probe sensor offset. The uncertainty increases with the extrapolation distance. To keep the uncertainty within 1% for the 1 g and 10 g cubes, the extrapolation distance should not be larger than 5 mm.

11. SAR Test Results

11.1 Conducted Power

Mode \ Channel	Band	CDMA2000 Cellular (dBm)			CDMA2000 PCS (dBm)		
		1013	384	777	25	600	1175
1xRTT FCH_RC1		23.46	23.6	23.51	23.05	23.25	23.07
1xRTT FCH_RC3		23.48	23.62	23.52	23.06	23.28	23.06
1xRTT FCH_RC3+SCH		23.42	23.59	23.51	23.04	23.26	23.05
1xEV-DO RTAP 9.6K		24.05	24.15	24.07	23.82	23.87	23.90
1xEV-DO RTAP 38.4K		23.89	23.97	23.90	23.62	23.72	23.75
1xEV-DO RTAP 153.6K		23.54	23.69	23.56	23.39	23.57	23.42
1xEV-DO RETAP-128		23.98	24.05	23.97	23.83	23.86	23.73
1xEV-DO RETAP-2048		23.79	23.72	23.85	23.44	23.55	23.58
1xEV-DO RETAP-12288		23.97	24.04	23.94	23.81	23.82	23.67

11.2 Test Records for Head SAR Test

Position	Band	Mode	Chan.	Freq. (MHz)	Modulation Type	Measured 1g SAR (W/kg)	Power Drift	Limit (W/kg)	Result	App. Plot
Right Cheek	CDMA2000 Cellular	RC1_SO55	384	836.52	QPSK	1.13	-0.174	1.6	Pass	-
Right Cheek	CDMA2000 Cellular	RC3_SO55	384	836.52	QPSK	1.09	-0.018	1.6	Pass	-
Right Tilted	CDMA2000 Cellular	RC1_SO55	384	836.52	QPSK	0.832	0.181	1.6	Pass	2
Left Cheek	CDMA2000 Cellular	RC1_SO55	384	836.52	QPSK	1.29	-0.157	1.6	Pass	-
Left Tilted	CDMA2000 Cellular	RC1_SO55	384	836.52	QPSK	0.872	-0.062	1.6	Pass	4
Left Cheek	CDMA2000 Cellular	RC1_SO55	1013	824.70	QPSK	1.37	-0.055	1.6	Pass	3
Left Cheek	CDMA2000 Cellular	RC1_SO55	777	848.31	QPSK	1.12	-0.044	1.6	Pass	-
Right Cheek	CDMA2000 Cellular	RC1_SO55	1013	824.70	QPSK	1.18	0.014	1.6	Pass	1
Right Cheek	CDMA2000 Cellular	RC1_SO55	777	848.31	QPSK	1.03	-0.037	1.6	Pass	-
Right Cheek	CDMA2000 PCS	RC1_SO55	600	1880.00	QPSK	1.27	-0.178	1.6	Pass	-
Right Cheek	CDMA2000 PCS	RC3_SO55	600	1880.00	QPSK	1.28	0.026	1.6	Pass	-
Right Tilted	CDMA2000 PCS	RC3_SO55	600	1880.00	QPSK	1.02	-0.092	1.6	Pass	-
Left Cheek	CDMA2000 PCS	RC3_SO55	600	1880.00	QPSK	0.811	-0.667	1.6	Pass	7
Left Tilted	CDMA2000 PCS	RC3_SO55	600	1880.00	QPSK	0.766	-0.142	1.6	Pass	8
Right Cheek	CDMA2000 PCS	RC3_SO55	25	1851.25	QPSK	1.4	0.006	1.6	Pass	5
Right Cheek	CDMA2000 PCS	RC3_SO55	1175	1908.75	QPSK	1.19	-0.009	1.6	Pass	-
Right Tilted	CDMA2000 PCS	RC3_SO55	25	1851.25	QPSK	1.06	0.025	1.6	Pass	6
Right Tilted	CDMA2000 PCS	RC3_SO55	1175	1908.75	QPSK	0.977	0.113	1.6	Pass	-

11.3 Test Records for Body SAR Test

Position	Ear-phone	Band	Mode	Chan.	Freq. (MHz)	Modulation Type	Measured 1g SAR (W/kg)	Power Drift	Limit (W/kg)	Result	App. Plot
Bottom with 1.5cm Gap	v	CDMA2000 Cellular	1xRTT FCH RC3	384	836.52	QPSK	0.608	-0.113	1.6	Pass	-
Face with 1.5cm Gap	v	CDMA2000 Cellular	1xRTT FCH RC3	384	836.52	QPSK	0.396	0.021	1.6	Pass	9
Bottom with 1.5cm Gap	v	CDMA2000 Cellular	1xEV-DO RTAP 9.6K	384	836.52	QPSK	0.758	-0.135	1.6	Pass	10
Bottom with 1.5cm Gap	v	CDMA2000 Cellular	1xEV-DO RETAP-128	384	836.52	QPSK	0.719	-0.164	1.6	Pass	-
Bottom with 1.5cm Gap	v	CDMA2000 Cellular	1xEV-DO RTAP 9.6K	1013	824.70	QPSK	0.714	0.042	1.6	Pass	-
Bottom with 1.5cm Gap	v	CDMA2000 Cellular	1xEV-DO RTAP 9.6K	777	848.31	QPSK	0.670	-0.141	1.6	Pass	-
Bottom with 1.5cm Gap	v	CDMA2000 PCS	1xRTT FCH RC3	600	1880.00	QPSK	1.05	-0.162	1.6	Pass	-
Face with 1.5cm Gap	v	CDMA2000 PCS	1xRTT FCH RC3	600	1880.00	QPSK	0.243	0.183	1.6	Pass	11
Bottom with 1.5cm Gap	v	CDMA2000 PCS	1xEV-DO RTAP 9.6K	600	1880.00	QPSK	1.22	-0.029	1.6	Pass	-
Bottom with 1.5cm Gap	v	CDMA2000 PCS	1xEV-DO RETAP-128	600	1880.00	QPSK	1.23	-0.027	1.6	Pass	-
Bottom with 1.5cm Gap	v	CDMA2000 PCS	1xRTT FCH RC3	25	1851.25	QPSK	0.86	-0.088	1.6	Pass	-
Bottom with 1.5cm Gap	v	CDMA2000 PCS	1xRTT FCH RC3	1175	1908.75	QPSK	1.07	-0.00735	1.6	Pass	-
Bottom with 1.5cm Gap	v	CDMA2000 PCS	1xEV-DO RTAP 9.6K	25	1851.25	QPSK	1.1	-0.181	1.6	Pass	-
Bottom with 1.5cm Gap	v	CDMA2000 PCS	1xEV-DO RTAP 9.6K	1175	1908.75	QPSK	1.28	-0.161	1.6	Pass	-
Bottom with 1.5cm Gap	v	CDMA2000 PCS	1xEV-DO RETAP-128	25	1851.25	QPSK	1.03	0.05	1.6	Pass	-
Bottom with 1.5cm Gap	v	CDMA2000 PCS	1xEV-DO RETAP-128	1175	1908.75	QPSK	1.29	-0.144	1.6	Pass	12

11.4 Volume Scan

Position	Mode	Chan.	Measured 1g SAR (W/kg)	Power Drift (dB)	Multi Band 1g SAR (W/kg)	Limit (W/kg)	Result	App. Plot
Left Cheek	CDMA2000 Cellular	1013	1.14	-0.117	1.24	1.6	Pass	13~15
	802.11g	6	0.128	-0.135				
Right Cheek	CDMA2000 PCS	25	1.3	0.187	1.53	1.6	Pass	16~18
	802.11g	6	0.339	-0.113				
Bottom with 1.5cm Gap	CDMA2000 Cellular	384	0.741	0.00528	0.837	1.6	Pass	19~21
	802.11g	6	0.155	-0.165				
Rear Face with 1.5cm Gap	CDMA2000 PCS	1175	1.23	-0.131	1.36	1.6	Pass	22~24
	802.11g	6	0.155	-0.165				

Remark:

- The worst configuration on each position is used for the volume scan.
- Test Engineer : Jason Wang, Robert Liu, and A-Rod Chen



12. References

- [1] FCC 47 CFR Part 2 “Frequency Allocations and Radio Treaty Matters; General Rules and Regulations”
- [2] IEEE Std. P1528-2003, “Recommended Practice for Determining the Peak Spatial-Average Specific Absorption Rate (SAR) in the Human Head from Wireless Communications Devices: Measurement Techniques”, April 21, 2003
- [3] Supplement C (Edition 01-01) to OET Bulletin 65 (Edition 97-01), “Additional Information for Evaluating Compliance of Mobile and Portable Devices with FCC Limits for Human Exposure to RF Emissions”, June 2001
- [4] IEEE Std. C95.3-2002, “IEEE Recommended Practice for the Measurement of Potentially Hazardous Electromagnetic Fields-RF and Microwave”, 2002
- [5] IEEE Std. C95.1-1999, “IEEE Standard for Safety Levels with Respect to Human Exposure to Radio Frequency Electromagnetic Fields, 3 kHz to 300 GHz”, 1999
- [6] Robert J. Renka, “Multivariate Interpolation Of Large Sets Of Scattered Data”, University of North Texas ACM Transactions on Mathematical Software, vol. 14, no. 2, June 1988, pp. 139-148
- [7] DASY4 System Handbook

Appendix A - System Performance Check Data

Test Laboratory: Sporton International Inc. SAR/HAC Testing Lab

Date: 2008/9/17

System Check_Head_835MHz

DUT: Dipole 835 MHz

Communication System: CW; Frequency: 835 MHz; Duty Cycle: 1:1

Medium: HSL_850 Medium parameters used: $f = 835 \text{ MHz}$; $\sigma = 0.913 \text{ mho/m}$; $\epsilon_r = 40.9$; $\rho = 1000 \text{ kg/m}^3$

Ambient Temperature : 22.9 °C; Liquid Temperature : 21.7 °C

DASY5 Configuration:

- Probe: ES3DV3 - SN3071; ConvF(6.06, 6.06, 6.06); Calibrated: 2008/1/29
- Sensor-Surface: 4mm (Mechanical Surface Detection)
- Electronics: DAE3 Sn393; Calibrated: 2008/8/25
- Phantom: SAM - Front; Type: SAM; Serial: TP-1446
- Measurement SW: DASY5, V5.0 Build 119; SEMCAD X Version 13.2 Build 87

Pin=100mW/Area Scan (61x61x1): Measurement grid: dx=15mm, dy=15mm

Maximum value of SAR (interpolated) = 0.954 mW/g

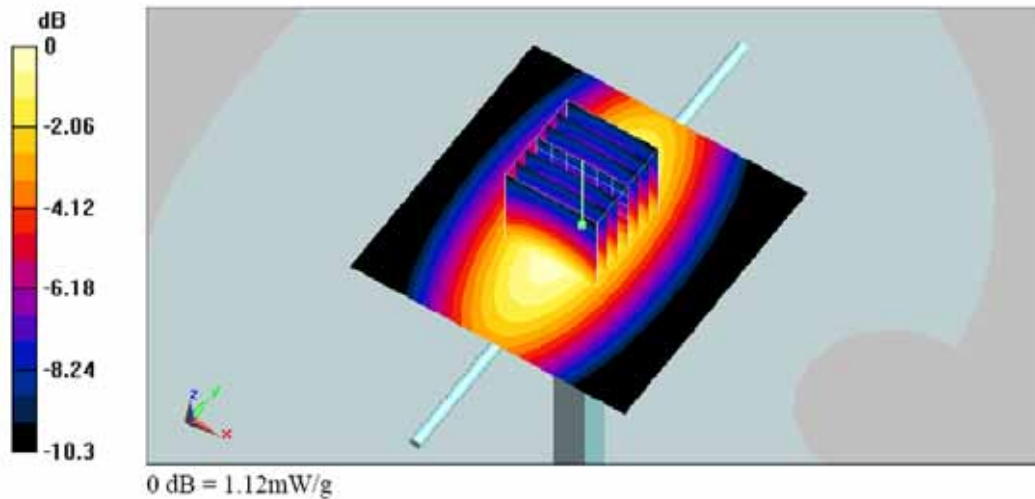
Pin=100mW/Zoom Scan (7x7x7)/Cube 0: Measurement grid: dx=5mm, dy=5mm, dz=5mm

Reference Value = 32.5 V/m; Power Drift = -0.00535 dB

Peak SAR (extrapolated) = 1.34 W/kg

SAR(1 g) = 0.888 mW/g; SAR(10 g) = 0.579 mW/g

Maximum value of SAR (measured) = 0.961 mW/g





Test Laboratory: Sporton International Inc. SAR/HAC Testing Lab

Date: 2008/9/17

System Check_Body_835MHz**DUT: Dipole 835 MHz**

Communication System: CW; Frequency: 835 MHz; Duty Cycle: 1:1

Medium: MSL_850 Medium parameters used: $f = 835 \text{ MHz}$; $\sigma = 0.989 \text{ mho/m}$; $\epsilon_r = 56.3$; $\rho = 1000 \text{ kg/m}^3$

Ambient Temperature : 22.7 °C; Liquid Temperature : 21.6 °C

DASY5 Configuration:

- Probe: ET3DV6 - SN1787; ConvF(5.91, 5.91, 5.91); Calibrated: 2008/8/26
- Sensor-Surface: 4mm (Mechanical Surface Detection)
- Electronics: DAE3 Sn393; Calibrated: 2008/8/25
- Phantom: SAM-Back; Type: QD 000 P40 C; Serial: TP-1383
- Measurement SW: DASY5, V5.0 Build 119; SEMCAD X Version 13.2 Build 87

Pin=100mW/Area Scan (61x61x1): Measurement grid: dx=15mm, dy=15mm

Maximum value of SAR (interpolated) = 1.12 mW/g

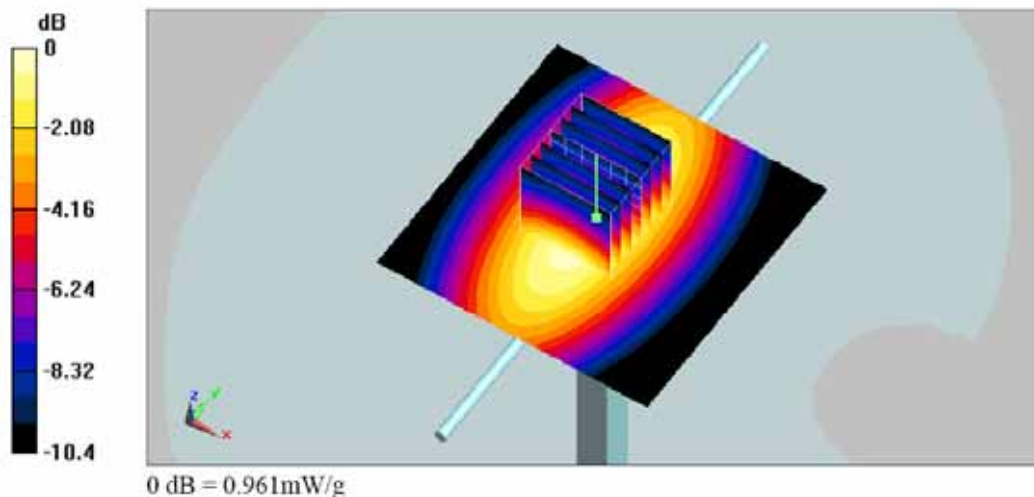
Pin=100mW/Zoom Scan (7x7x7)/Cube 0: Measurement grid: dx=5mm, dy=5mm, dz=5mm

Reference Value = 35.2 V/m; Power Drift = -0.00907 dB

Peak SAR (extrapolated) = 1.46 W/kg

SAR(1 g) = 1.03 mW/g; SAR(10 g) = 0.684 mW/g

Maximum value of SAR (measured) = 1.12 mW/g



Test Laboratory: Sporton International Inc. SAR/HAC Testing Lab

Date: 2008/9/12

System Check_Head_1900MHz

DUT: Dipole 1900 MHz

Communication System: CW; Frequency: 1900 MHz; Duty Cycle: 1:1

Medium: HSL_1900 Medium parameters used: $f = 1900$ MHz; $\sigma = 1.42$ mho/m; $\epsilon_r = 41.9$; $\rho = 1000$ kg/m³

Ambient Temperature : 22.6 °C; Liquid Temperature : 21.5 °C

DASY4 Configuration:

- Probe: ES3DV3 - SN3071; ConvF(4.78, 4.78, 4.78); Calibrated: 2008/1/29
- Sensor-Surface: 4mm (Mechanical Surface Detection)
- Electronics: DAE3 Sn577; Calibrated: 2007/11/16
- Phantom: SAM-Right; Type: QD 000 P40 C; Serial: TP-1383
- Measurement SW: DASY4, V4.7 Build 71; Postprocessing SW: SEMCAD, V1.8 Build 184

Pin=100mW/Area Scan (61x61x1): Measurement grid: dx=15mm, dy=15mm

Maximum value of SAR (interpolated) = 4.46 mW/g

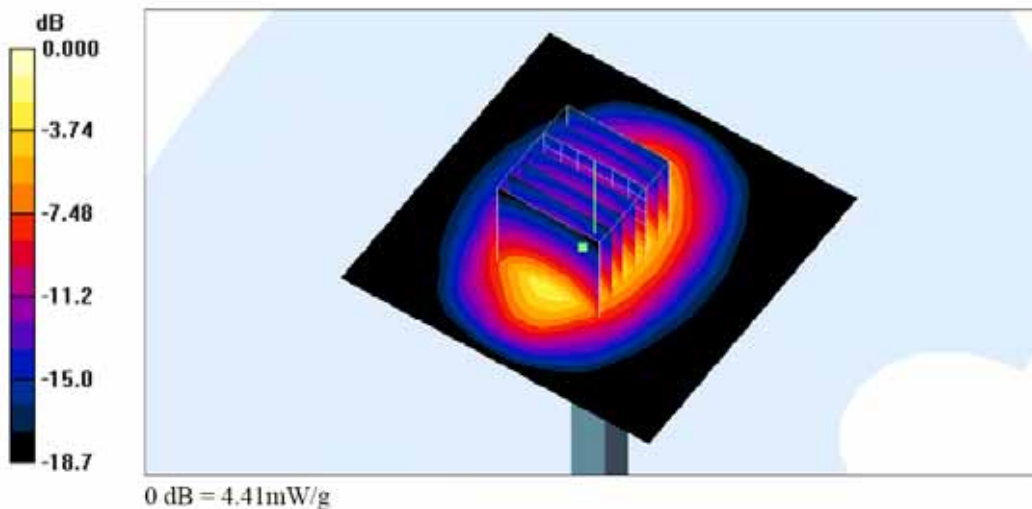
Pin=100mW/Zoom Scan (7x7x7)/Cube 0: Measurement grid: dx=5mm, dy=5mm, dz=5mm

Reference Value = 56.0 V/m; Power Drift = 0.002 dB

Peak SAR (extrapolated) = 7.52 W/kg

SAR(1 g) = 3.89 mW/g; SAR(10 g) = 1.98 mW/g

Maximum value of SAR (measured) = 4.41 mW/g



Test Laboratory: Sporton International Inc. SAR/HAC Testing Lab

Date: 2008/9/15

System Check_Head_1900MHz

DUT: Dipole 1900 MHz

Communication System: CW; Frequency: 1900 MHz; Duty Cycle: 1:1

Medium: HSL_1900 Medium parameters used: $f = 1900$ MHz; $\sigma = 1.42$ mho/m; $\epsilon_r = 41.8$; $\rho = 1000$ kg/m³

Ambient Temperature : 22.5 °C; Liquid Temperature : 21.2 °C

DASY5 Configuration:

- Probe: ET3DV6 - SN1787; ConvF(5.01, 5.01, 5.01); Calibrated: 2008/8/26
- Sensor-Surface: 4mm (Mechanical Surface Detection)
- Electronics: DAE3 Sn393; Calibrated: 2008/8/25
- Phantom: SAM-Back; Type: QD 000 P40 C; Serial: TP-1383
- Measurement SW: DASY5, V5.0 Build 119; SEMCAD X Version 13.2 Build 87

Pin=100mW/Area Scan (61x61x1): Measurement grid: dx=15mm, dy=15mm

Maximum value of SAR (interpolated) = 4.89 mW/g

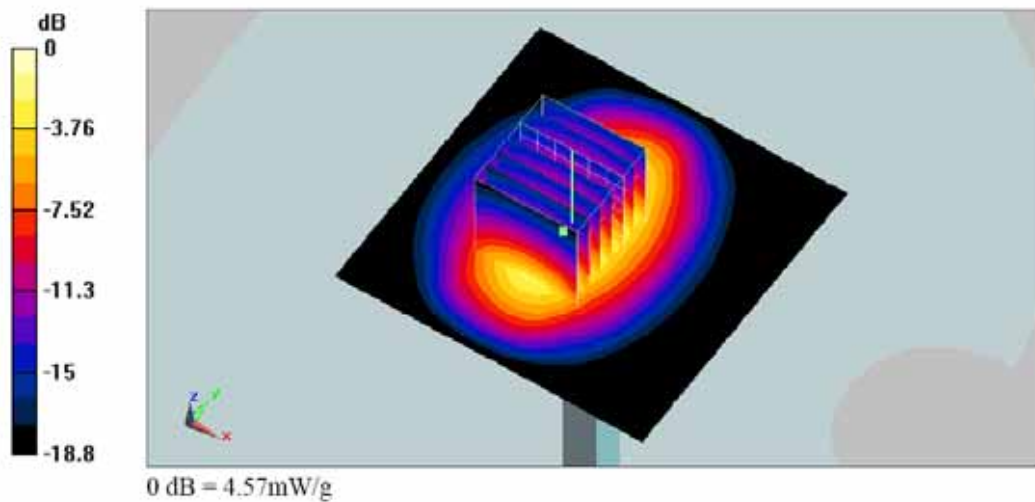
Pin=100mW/Zoom Scan (7x7x7)/Cube 0: Measurement grid: dx=5mm, dy=5mm, dz=5mm

Reference Value = 56 V/m; Power Drift = 0.027 dB

Peak SAR (extrapolated) = 7.62 W/kg

SAR(1 g) = 4.1 mW/g; SAR(10 g) = 2.13 mW/g

Maximum value of SAR (measured) = 4.57 mW/g



Test Laboratory: Sporton International Inc. SAR/HAC Testing Lab

Date: 2008/9/16

System Check_Body_1900MHz

DUT: Dipole 1900 MHz

Communication System: CW; Frequency: 1900 MHz; Duty Cycle: 1:1

Medium: MSL_1900 Medium parameters used: $f = 1900 \text{ MHz}$; $\sigma = 1.52 \text{ mho/m}$; $\epsilon_r = 52.4$; $\rho = 1000 \text{ kg/m}^3$

Ambient Temperature : 22.6 °C; Liquid Temperature : 21.6 °C

DASY5 Configuration:

- Probe: ET3DV6 - SN1787; ConvF(4.49, 4.49, 4.49); Calibrated: 2008/8/26
- Sensor-Surface: 4mm (Mechanical Surface Detection)
- Electronics: DAE3 Sn393; Calibrated: 2008/8/25
- Phantom: SAM - Front; Type: SAM; Serial: TP-1446
- Measurement SW: DASY5, V5.0 Build 119; SEMCAD X Version 13.2 Build 87

Pin=100mW/Area Scan (91x91x1): Measurement grid: dx=10mm, dy=10mm

Maximum value of SAR (interpolated) = 4.57 mW/g

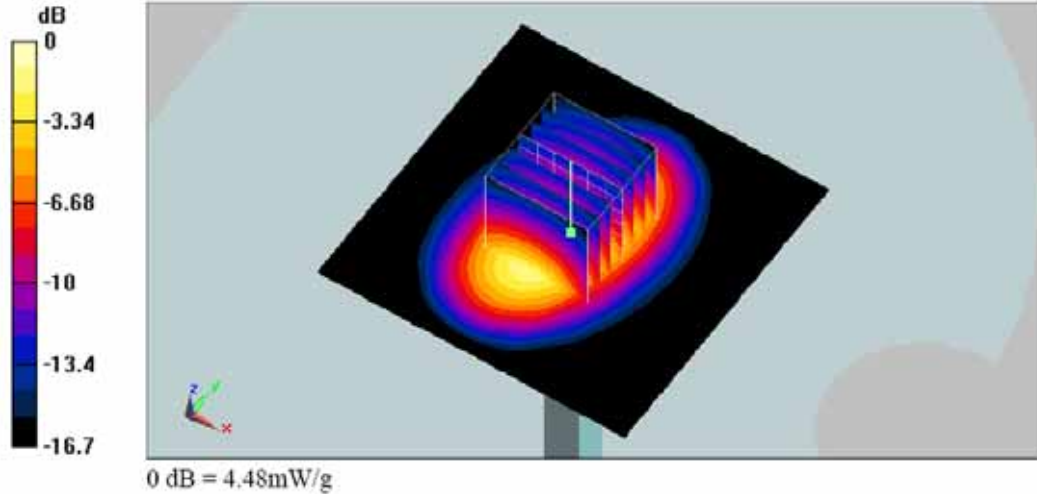
Pin=100mW/Zoom Scan (7x7x7)/Cube 0: Measurement grid: dx=5mm, dy=5mm, dz=5mm

Reference Value = 56.8 V/m; Power Drift = -0.0081 dB

Peak SAR (extrapolated) = 7.19 W/kg

SAR(1 g) = 3.99 mW/g; SAR(10 g) = 2.12 mW/g

Maximum value of SAR (measured) = 4.48 mW/g



Appendix B - SAR Measurement Data

<Plot 1>

Test Laboratory: Sporton International Inc. SAR/HAC Testing Lab

Date: 2008/9/17

Right Cheek_CDMA850 Ch1013_RC1_SO55
DUT: 891114

Communication System: CDMA ; Frequency: 824.7 MHz;Duty Cycle: 1:1

Medium: HSL_850 Medium parameters used: $f = 825$ MHz; $\sigma = 0.904$ mho/m; $\epsilon_r = 41$; $\rho = 1000$ kg/m³

Ambient Temperature : 22.7 °C; Liquid Temperature : 21.7 °C

DASY5 Configuration:

- Probe: ES3DV3 - SN3071; ConvF(6.06, 6.06, 6.06); Calibrated: 2008/1/29
- Sensor-Surface: 4mm (Mechanical Surface Detection)
- Electronics: DAE3 Sn393; Calibrated: 2008/8/25
- Phantom: SAM - Front; Type: SAM; Serial: TP-1446
- Measurement SW: DASY5, V5.0 Build 119; SEMCAD X Version 13.2 Build 87

Ch1013/Area Scan (51x91x1): Measurement grid: dx=15mm, dy=15mm

Maximum value of SAR (interpolated) = 1.24 mW/g

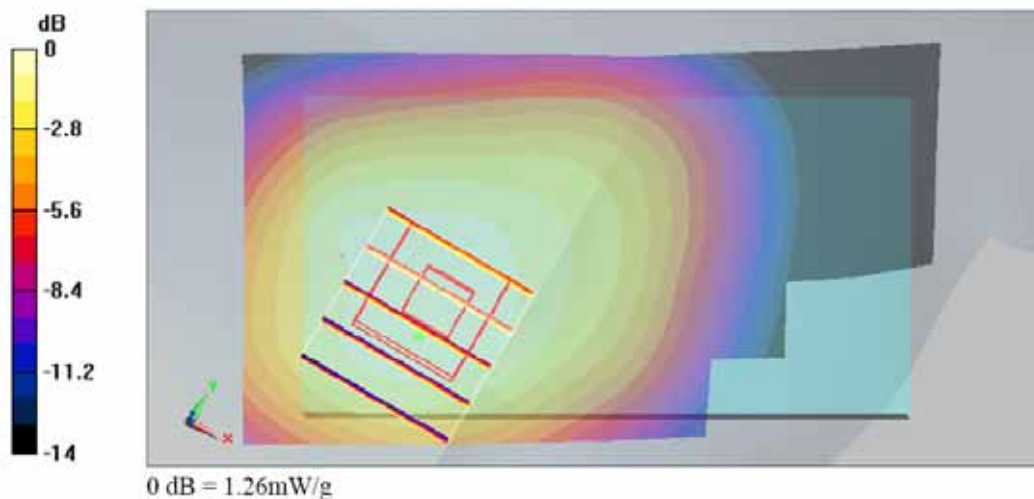
Ch1013/Zoom Scan (5x5x7)/Cube 0: Measurement grid: dx=8mm, dy=8mm, dz=5mm

Reference Value = 34.2 V/m; Power Drift = 0.014 dB

Peak SAR (extrapolated) = 1.75 W/kg

SAR(1 g) = 1.18 mW/g; SAR(10 g) = 0.819 mW/g

Maximum value of SAR (measured) = 1.26 mW/g



<Plot 2>

Test Laboratory: Sporton International Inc. SAR/HAC Testing Lab

Date: 2008/9/17

Right Tilted_CDMA850 Ch384_RC1_SO55
DUT: 891114

Communication System: CDMA ; Frequency: 836.52 MHz;Duty Cycle: 1:1

Medium: HSL_850 Medium parameters used: $f = 837$ MHz; $\sigma = 0.915$ mho/m; $\epsilon_r = 40.9$; $\rho = 1000$ kg/m³

Ambient Temperature : 22.8 °C; Liquid Temperature : 21.7 °C

DASY5 Configuration:

- Probe: ES3DV3 - SN3071; ConvF(6.06, 6.06, 6.06); Calibrated: 2008/1/29
- Sensor-Surface: 4mm (Mechanical Surface Detection)
- Electronics: DAE3 Sn393; Calibrated: 2008/8/25
- Phantom: SAM - Front; Type: SAM; Serial: TP-1446
- Measurement SW: DASY5, V5.0 Build 119; SEMCAD X Version 13.2 Build 87

Ch384/Area Scan (51x91x1): Measurement grid: dx=15mm, dy=15mm

Maximum value of SAR (interpolated) = 0.887 mW/g

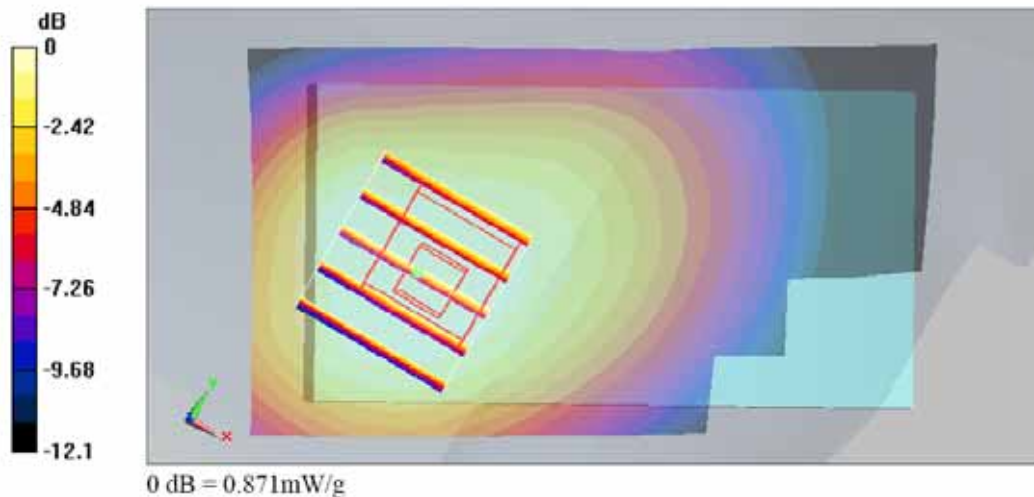
Ch384/Zoom Scan (5x5x7)/Cube 0: Measurement grid: dx=8mm, dy=8mm, dz=5mm

Reference Value = 30 V/m; Power Drift = 0.181 dB

Peak SAR (extrapolated) = 1.13 W/kg

SAR(1 g) = 0.832 mW/g; SAR(10 g) = 0.608 mW/g

Maximum value of SAR (measured) = 0.871 mW/g



<Plot 3>

Test Laboratory: Sporton International Inc. SAR/HAC Testing Lab

Date: 2008/9/17

Left Cheek_CDMA850 Ch1013_RC1_SO55
DUT: 891114

Communication System: CDMA ; Frequency: 824.7 MHz;Duty Cycle: 1:1

Medium: HSL_850 Medium parameters used: $f = 825 \text{ MHz}$; $\sigma = 0.904 \text{ mho/m}$; $\epsilon_r = 41$; $\rho = 1000 \text{ kg/m}^3$

Ambient Temperature : 22.7 °C; Liquid Temperature : 21.7 °C

DASY5 Configuration:

- Probe: ES3DV3 - SN3071; ConvF(6.06, 6.06, 6.06); Calibrated: 2008/1/29
- Sensor-Surface: 4mm (Mechanical Surface Detection)
- Electronics: DAE3 Sn393; Calibrated: 2008/8/25
- Phantom: SAM - Front; Type: SAM; Serial: TP-1446
- Measurement SW: DASY5, V5.0 Build 119; SEMCAD X Version 13.2 Build 87

Ch1013/Area Scan (51x91x1): Measurement grid: $dx=15\text{mm}$, $dy=15\text{mm}$

Maximum value of SAR (interpolated) = 1.47 mW/g

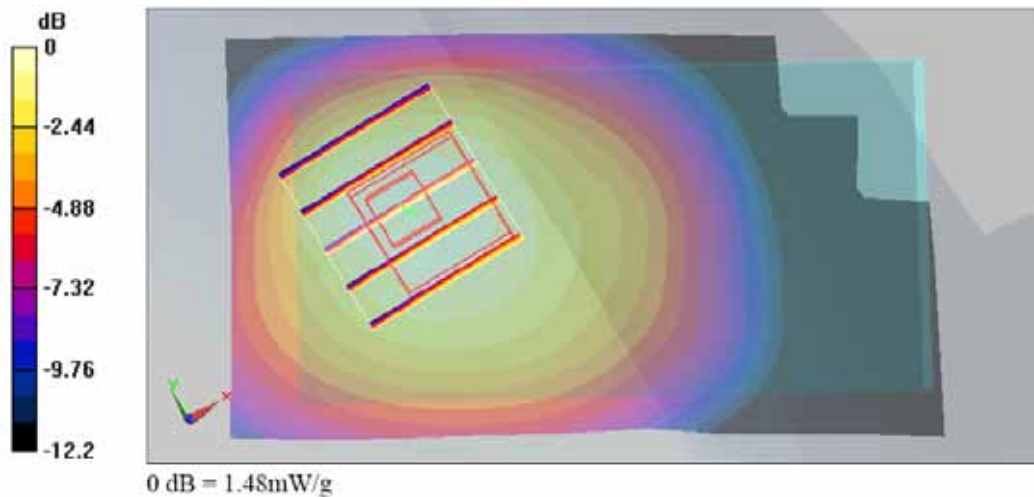
Ch1013/Zoom Scan (5x5x7)/Cube 0: Measurement grid: $dx=8\text{mm}$, $dy=8\text{mm}$, $dz=5\text{mm}$

Reference Value = 36.2 V/m; Power Drift = -0.055 dB

Peak SAR (extrapolated) = 1.85 W/kg

SAR(1 g) = 1.37 mW/g; SAR(10 g) = 0.983 mW/g

Maximum value of SAR (measured) = 1.48 mW/g



<Plot 4>

Test Laboratory: Sporton International Inc. SAR/HAC Testing Lab

Date: 2008/9/17

Left Tilted_CDMA850 Ch384_RC1_SO55
DUT: 891114

Communication System: CDMA ; Frequency: 836.52 MHz; Duty Cycle: 1:1

 Medium: HSL_850 Medium parameters used: $f = 837 \text{ MHz}$; $\sigma = 0.915 \text{ mho/m}$; $\epsilon_r = 40.9$; $\rho = 1000 \text{ kg/m}^3$

Ambient Temperature : 22.8 °C; Liquid Temperature : 21.7 °C

DASY5 Configuration:

- Probe: ES3DV3 - SN3071; ConvF(6.06, 6.06, 6.06); Calibrated: 2008/1/29
- Sensor-Surface: 4mm (Mechanical Surface Detection)
- Electronics: DAE3 Sn393; Calibrated: 2008/8/25
- Phantom: SAM - Front; Type: SAM; Serial: TP-1446
- Measurement SW: DASY5, V5.0 Build 119; SEMCAD X Version 13.2 Build 87

Ch384/Area Scan (51x91x1): Measurement grid: $dx=15\text{mm}$, $dy=15\text{mm}$

Maximum value of SAR (interpolated) = 0.943 mW/g

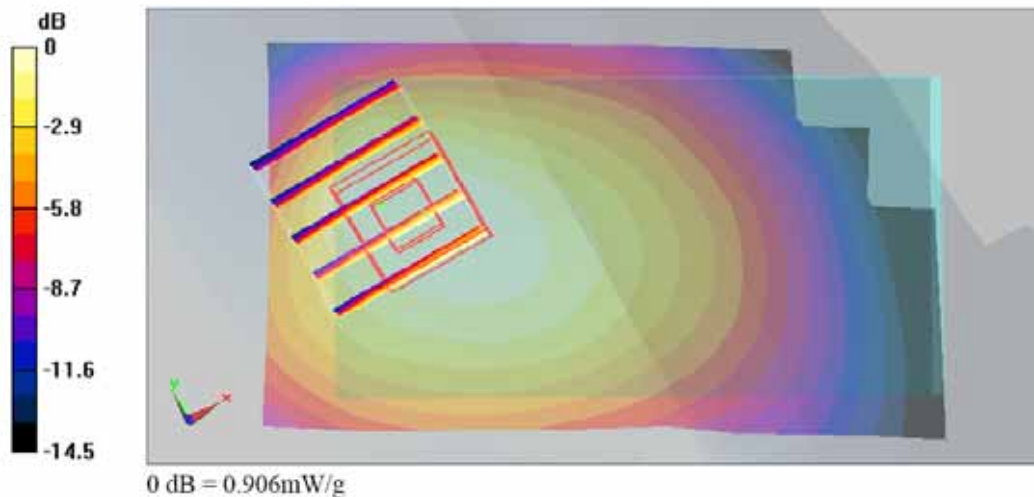
Ch384/Zoom Scan (5x5x7)/Cube 0: Measurement grid: $dx=8\text{mm}$, $dy=8\text{mm}$, $dz=5\text{mm}$

Reference Value = 30.6 V/m; Power Drift = -0.062 dB

Peak SAR (extrapolated) = 1.29 W/kg

SAR(1 g) = 0.872 mW/g; SAR(10 g) = 0.597 mW/g

Maximum value of SAR (measured) = 0.906 mW/g



<Plot 5>

Test Laboratory: Sporton International Inc. SAR/HAC Testing Lab

Date: 2008/9/12

Right Cheek_CDMA1900 Ch25_RC3_SO55_YE2-6010
DUT: 891114

Communication System: CDMA ; Frequency: 1851.25 MHz;Duty Cycle: 1:1

Medium: HSL_1900 Medium parameters used : $f = 1851.25$ MHz; $\sigma = 1.36$ mho/m; $\epsilon_r = 41.9$; $\rho = 1000$ kg/m³

Ambient Temperature : 22.7 °C; Liquid Temperature : 21.5 °C

DASY4 Configuration:

- Probe: ES3DV3 - SN3071; ConvF(4.78, 4.78, 4.78); Calibrated: 2008/1/29
- Sensor-Surface: 4mm (Mechanical Surface Detection)
- Electronics: DAE3 Sn577; Calibrated: 2007/11/16
- Phantom: SAM-Right; Type: QD 000 P40 C; Serial: TP-1383
- Measurement SW: DASY4, V4.7 Build 71; Postprocessing SW: SEMCAD, V1.8 Build 184

Ch25/Area Scan (51x91x1): Measurement grid: dx=15mm, dy=15mm

Maximum value of SAR (interpolated) = 1.58 mW/g

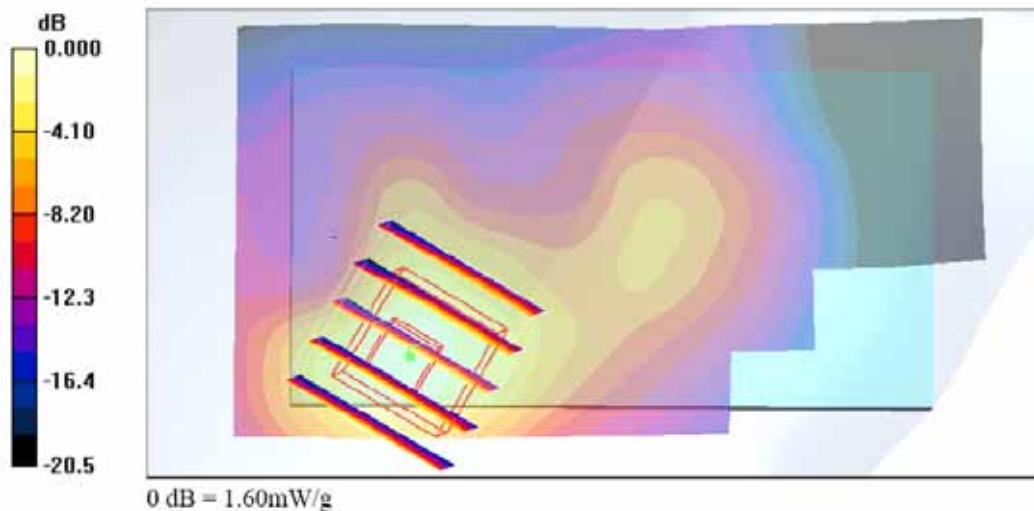
Ch25/Zoom Scan (5x5x7)/Cube 0: Measurement grid: dx=8mm, dy=8mm, dz=5mm

Reference Value = 9.44 V/m; Power Drift = 0.006 dB

Peak SAR (extrapolated) = 2.62 W/kg

SAR(1 g) = 1.4 mW/g; SAR(10 g) = 0.706 mW/g

Maximum value of SAR (measured) = 1.60 mW/g



<Plot 6>

Test Laboratory: Sporton International Inc. SAR/HAC Testing Lab

Date: 2008/9/12

Right Tilted_CDMA1900 Ch25_RC3_SO55_YE2-6010
DUT: 891114

Communication System: CDMA ; Frequency: 1851.25 MHz;Duty Cycle: 1:1

Medium: HSL_1900 Medium parameters used : $f = 1851.25 \text{ MHz}$; $\sigma = 1.36 \text{ mho/m}$; $\epsilon_r = 41.9$; $\rho = 1000 \text{ kg/m}^3$

Ambient Temperature : 22.6 °C; Liquid Temperature : 21.5 °C

DASY4 Configuration:

- Probe: ES3DV3 - SN3071; ConvF(4.78, 4.78, 4.78); Calibrated: 2008/1/29
- Sensor-Surface: 4mm (Mechanical Surface Detection)
- Electronics: DAE3 Sn577; Calibrated: 2007/11/16
- Phantom: SAM-Right; Type: QD 000 P40 C; Serial: TP-1383
- Measurement SW: DASY4, V4.7 Build 71; Postprocessing SW: SEMCAD, V1.8 Build 184

Ch25/Area Scan (51x91x1): Measurement grid: $dx=15\text{mm}$, $dy=15\text{mm}$

Maximum value of SAR (interpolated) = 1.15 mW/g

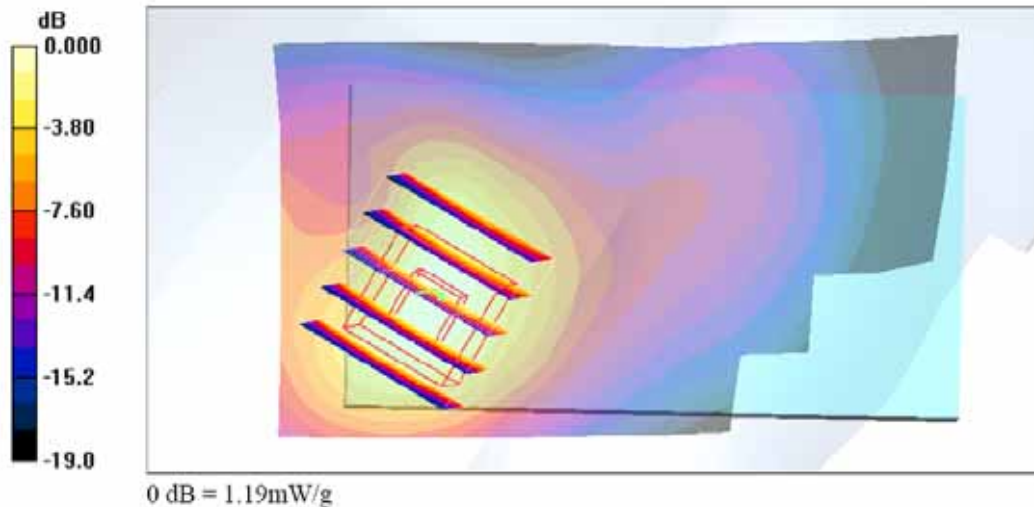
Ch25/Zoom Scan (5x5x7)/Cube 0: Measurement grid: $dx=8\text{mm}$, $dy=8\text{mm}$, $dz=5\text{mm}$

Reference Value = 16.8 V/m; Power Drift = 0.025 dB

Peak SAR (extrapolated) = 1.85 W/kg

SAR(1 g) = 1.06 mW/g; SAR(10 g) = 0.555 mW/g

Maximum value of SAR (measured) = 1.19 mW/g



<Plot 7>

Test Laboratory: Sporton International Inc. SAR/HAC Testing Lab

Date: 2008/9/12

Left Cheek_CDMA1900 Ch600_RC3_SO55_YE2-6010
DUT: 891114

Communication System: CDMA ; Frequency: 1880 MHz;Duty Cycle: 1:1

Medium: HSL_1900 Medium parameters used: $f = 1880$ MHz; $\sigma = 1.4$ mho/m; $\epsilon_r = 41.8$; $\rho = 1000$ kg/m³

Ambient Temperature : 22.7 °C; Liquid Temperature : 21.5 °C

DASY4 Configuration:

- Probe: ES3DV3 - SN3071; ConvF(4.78, 4.78, 4.78); Calibrated: 2008/1/29
- Sensor-Surface: 4mm (Mechanical Surface Detection)
- Electronics: DAE3 Sn577; Calibrated: 2007/11/16
- Phantom: SAM-Right; Type: QD 000 P40 C; Serial: TP-1383
- Measurement SW: DASY4, V4.7 Build 71; Postprocessing SW: SEMCAD, V1.8 Build 184

Ch600/Area Scan (51x91x1): Measurement grid: dx=15mm, dy=15mm

Maximum value of SAR (interpolated) = 0.880 mW/g

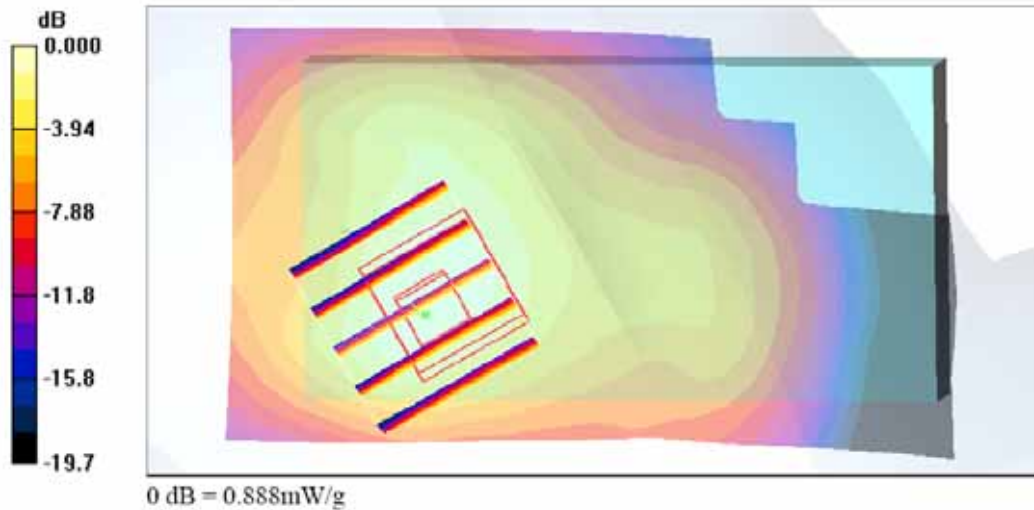
Ch600/Zoom Scan (5x5x7)/Cube 0: Measurement grid: dx=8mm, dy=8mm, dz=5mm

Reference Value = 12.7 V/m; Power Drift = -0.167 dB

Peak SAR (extrapolated) = 1.38 W/kg

SAR(1 g) = 0.811 mW/g; SAR(10 g) = 0.456 mW/g

Maximum value of SAR (measured) = 0.888 mW/g



<Plot 8>

Test Laboratory: Sporton International Inc. SAR/HAC Testing Lab

Date: 2008/9/12

Left Tilted_CDMA1900 Ch600_RC3_SO55_YE2-6010
DUT: 891114

Communication System: CDMA ; Frequency: 1880 MHz;Duty Cycle: 1:1

Medium: HSL_1900 Medium parameters used: $f = 1880$ MHz; $\sigma = 1.4$ mho/m; $\epsilon_r = 41.8$; $\rho = 1000$ kg/m³

Ambient Temperature : 22.7 °C; Liquid Temperature : 21.5 °C

DASY4 Configuration:

- Probe: ES3DV3 - SN3071; ConvF(4.78, 4.78, 4.78); Calibrated: 2008/1/29
- Sensor-Surface: 4mm (Mechanical Surface Detection)
- Electronics: DAE3 Sn577; Calibrated: 2007/11/16
- Phantom: SAM-Right; Type: QD 000 P40 C; Serial: TP-1383
- Measurement SW: DASY4, V4.7 Build 71; Postprocessing SW: SEMCAD, V1.8 Build 184

Ch600/Area Scan (51x91x1): Measurement grid: dx=15mm, dy=15mm

Maximum value of SAR (interpolated) = 0.815 mW/g

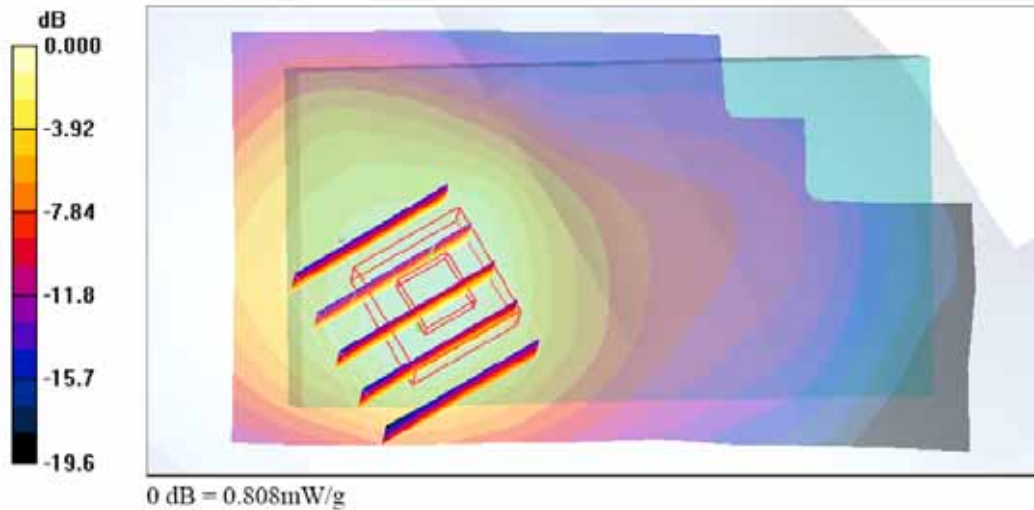
Ch600/Zoom Scan (5x5x7)/Cube 0: Measurement grid: dx=8mm, dy=8mm, dz=5mm

Reference Value = 15.6 V/m; Power Drift = -0.142 dB

Peak SAR (extrapolated) = 1.29 W/kg

SAR(1 g) = 0.766 mW/g; SAR(10 g) = 0.431 mW/g

Maximum value of SAR (measured) = 0.808 mW/g



<Plot 9>

Test Laboratory: Sporton International Inc. SAR/HAC Testing Lab

Date: 2008/9/17

Body_CDMA850 Ch384_Face with 1.5cm Gap_RC3_SO55
DUT: 891114

Communication System: CDMA ; Frequency: 836.52 MHz; Duty Cycle: 1:1

Medium: MSL_850 Medium parameters used: $f = 837 \text{ MHz}$; $\sigma = 0.991 \text{ mho/m}$; $\epsilon_r = 56.2$; $\rho = 1000 \text{ kg/m}^3$

Ambient Temperature : 22.7 °C; Liquid Temperature : 21.6 °C

DASY5 Configuration:

- Probe: ET3DV6 - SN1787; ConvF(5.91, 5.91, 5.91); Calibrated: 2008/8/26
- Sensor-Surface: 4mm (Mechanical Surface Detection)
- Electronics: DAE3 Sn393; Calibrated: 2008/8/25
- Phantom: SAM-Back; Type: QD 000 P40 C; Serial: TP-1383
- Measurement SW: DASY5, V5.0 Build 119; SEMCAD X Version 13.2 Build 87

Ch384/Area Scan (51x91x1): Measurement grid: $dx=15\text{mm}$, $dy=15\text{mm}$

Maximum value of SAR (interpolated) = 0.429 mW/g

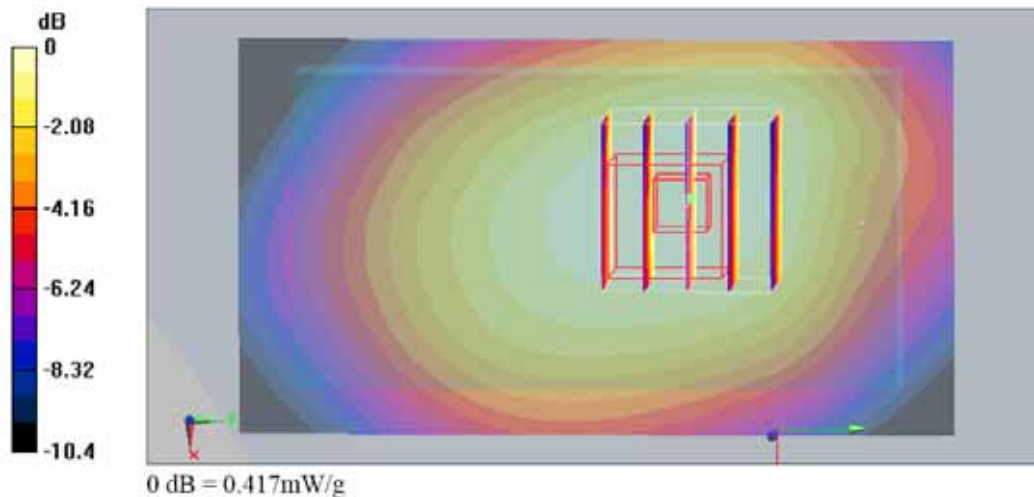
Ch384/Zoom Scan (5x5x7)/Cube 0: Measurement grid: $dx=8\text{mm}$, $dy=8\text{mm}$, $dz=5\text{mm}$

Reference Value = 14.7 V/m; Power Drift = 0.021 dB

Peak SAR (extrapolated) = 0.500 W/kg

SAR(1 g) = 0.396 mW/g; SAR(10 g) = 0.297 mW/g

Maximum value of SAR (measured) = 0.417 mW/g



**<Plot 10>**

Test Laboratory: Sporton International Inc. SAR/HAC Testing Lab

Date: 2008/9/17

Body_CDMA850 Ch384_Bottom with 1.5cm Gap_RTAP-9.6k**DUT: 891114**

Communication System: CDMA ; Frequency: 836.52 MHz; Duty Cycle: 1:1

Medium: MSL_850 Medium parameters used: $f = 837$ MHz; $\sigma = 0.991$ mho/m; $\epsilon_r = 56.2$; $\rho = 1000$ kg/m³

Ambient Temperature : 22.6 °C; Liquid Temperature : 21.6 °C

DASY5 Configuration:

- Probe: ET3DV6 - SN1787; ConvF(5.91, 5.91, 5.91); Calibrated: 2008/8/26
- Sensor-Surface: 4mm (Mechanical Surface Detection)
- Electronics: DAE3 Sn393; Calibrated: 2008/8/25
- Phantom: SAM-Back; Type: QD 000 P40 C; Serial: TP-1383
- Measurement SW: DASY5, V5.0 Build 119; SEMCAD X Version 13.2 Build 87

Ch384/Area Scan (51x91x1): Measurement grid: dx=15mm, dy=15mm

Maximum value of SAR (interpolated) = 0.790 mW/g

Ch384/Zoom Scan (5x5x7)/Cube 0: Measurement grid: dx=8mm, dy=8mm, dz=5mm

Reference Value = 25.1 V/m; Power Drift = -0.135 dB

Peak SAR (extrapolated) = 0.968 W/kg

SAR(1 g) = 0.758 mW/g; SAR(10 g) = 0.549 mW/g

Maximum value of SAR (measured) = 0.801 mW/g

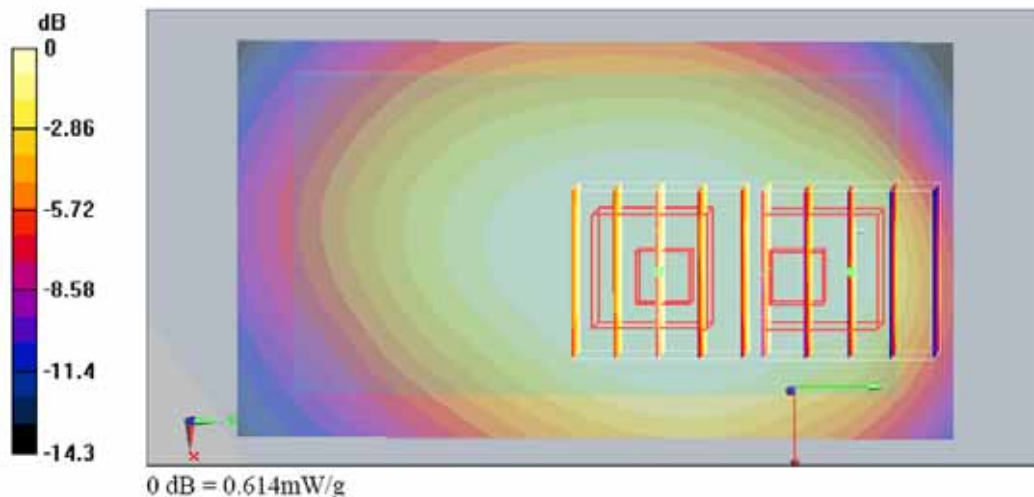
Ch384/Zoom Scan (5x5x7)/Cube 1: Measurement grid: dx=8mm, dy=8mm, dz=5mm

Reference Value = 25.1 V/m; Power Drift = -0.135 dB

Peak SAR (extrapolated) = 0.864 W/kg

SAR(1 g) = 0.563 mW/g; SAR(10 g) = 0.377 mW/g

Maximum value of SAR (measured) = 0.614 mW/g



<Plot 11>

Test Laboratory: Sporton International Inc. SAR/HAC Testing Lab

Date: 2008/9/16

Body_CDMA1900 Ch600_Face with 1.5cm Gap_RC3
DUT: 891114

Communication System: CDMA ; Frequency: 1880 MHz;Duty Cycle: 1:1

Medium: MSL_1900 Medium parameters used: $f = 1880 \text{ MHz}$; $\sigma = 1.48 \text{ mho/m}$; $\epsilon_r = 52.9$; $\rho = 1000 \text{ kg/m}^3$

Ambient Temperature : 22.5 °C; Liquid Temperature : 21.6 °C

DASY5 Configuration:

- Probe: ET3DV6 - SN1787; ConvF(4.49, 4.49, 4.49); Calibrated: 2008/8/26
- Sensor-Surface: 4mm (Mechanical Surface Detection)
- Electronics: DAE3 Sn393; Calibrated: 2008/8/25
- Phantom: SAM - Front; Type: SAM; Serial: TP-1446
- Measurement SW: DASY5, V5.0 Build 119; SEMCAD X Version 13.2 Build 87

Ch600/Area Scan (51x91x1): Measurement grid: $dx=15\text{mm}$, $dy=15\text{mm}$

Maximum value of SAR (interpolated) = 0.263 mW/g

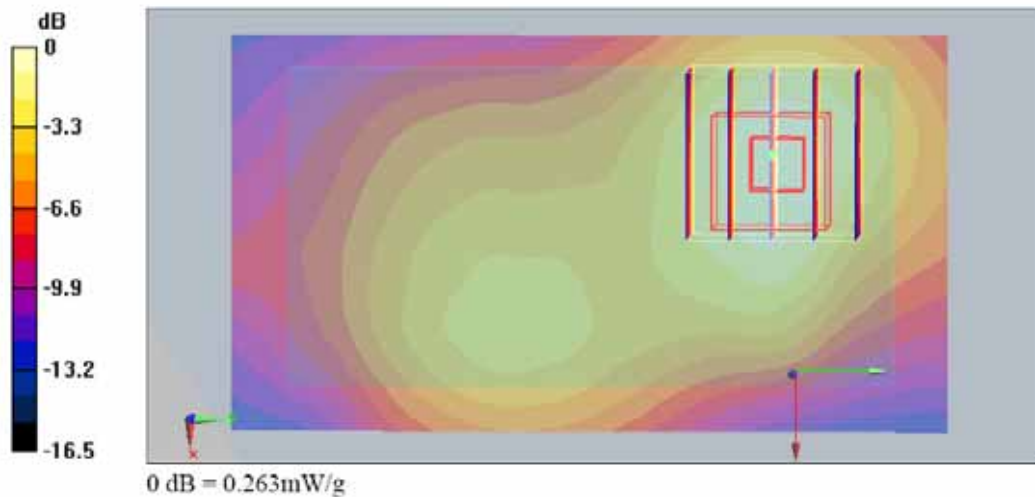
Ch600/Zoom Scan (5x5x7)/Cube 0: Measurement grid: $dx=8\text{mm}$, $dy=8\text{mm}$, $dz=5\text{mm}$

Reference Value = 9.69 V/m; Power Drift = 0.183 dB

Peak SAR (extrapolated) = 0.409 W/kg

SAR(1 g) = 0.243 mW/g; SAR(10 g) = 0.143 mW/g

Maximum value of SAR (measured) = 0.263 mW/g



**<Plot 12>**

Test Laboratory: Sporton International Inc. SAR/HAC Testing Lab

Date: 2008/9/16

Body_CDMA1900 Ch1175_Bottom with 1.5cm Gap_RETAP-128**DUT: 891114**

Communication System: CDMA ; Frequency: 1908.75 MHz; Duty Cycle: 1:1

Medium: MSL_1900 Medium parameters used: $f = 1909$ MHz; $\sigma = 1.54$ mho/m; $\epsilon_r = 52.2$; $\rho = 1000$ kg/m³

Ambient Temperature : 22.6 °C; Liquid Temperature : 21.6 °C

DASY5 Configuration:

- Probe: ET3DV6 - SN1787; ConvF(4.49, 4.49, 4.49); Calibrated: 2008/8/26
- Sensor-Surface: 4mm (Mechanical Surface Detection)
- Electronics: DAE3 Sn393; Calibrated: 2008/8/25
- Phantom: SAM - Front; Type: SAM; Serial: TP-1446
- Measurement SW: DASY5, V5.0 Build 119; SEMCAD X Version 13.2 Build 87

Ch1175/Area Scan (51x91x1): Measurement grid: dx=15mm, dy=15mm

Maximum value of SAR (interpolated) = 1.33 mW/g

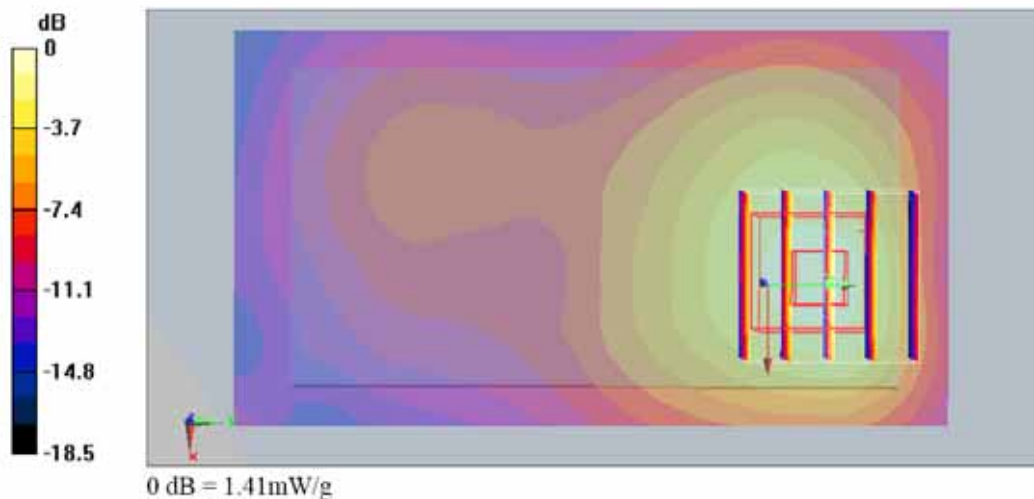
Ch1175/Zoom Scan (5x5x7)/Cube 0: Measurement grid: dx=8mm, dy=8mm, dz=5mm

Reference Value = 26.6 V/m; Power Drift = -0.144 dB

Peak SAR (extrapolated) = 2.46 W/kg

SAR(1 g) = 1.29 mW/g; SAR(10 g) = 0.689 mW/g

Maximum value of SAR (measured) = 1.41 mW/g



<Plot 13>

Test Laboratory: Sporton International Inc. SAR/HAC Testing Lab

Date: 2008/9/17

Left Cheek_CDMA850 Ch1013_RC3_Volume Scan_RC1_SO55
DUT: 891114

Communication System: CDMA ; Frequency: 824.7 MHz;Duty Cycle: 1:1

Medium: HSL_850 Medium parameters used: $f = 825$ MHz; $\sigma = 0.904$ mho/m; $\epsilon_r = 41$; $\rho = 1000$ kg/m³

Ambient Temperature : 22.9 °C; Liquid Temperature : 21.7 °C

DASY5 Configuration:

- Probe: ES3DV3 - SN3071; ConvF(6.06, 6.06, 6.06); Calibrated: 2008/1/29
- Sensor-Surface: 4mm (Mechanical Surface Detection)
- Electronics: DAE3 Sn393; Calibrated: 2008/8/25
- Phantom: SAM-Back; Type: QD 000 P40 C; Serial: TP-1383
- Measurement SW: DASY5, V5.0 Build 119; SEMCAD X Version 13.2 Build 87

Ch1013/Volume Scan (10x18x10): Measurement grid: dx=8mm, dy=8mm, dz=5mm

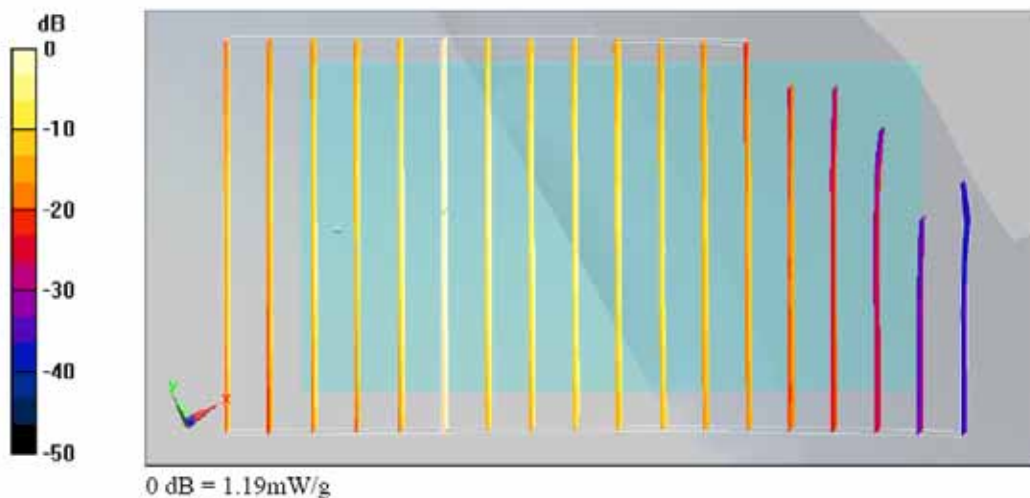
Reference Value = 32.7 V/m; Power Drift = -0.117 dB

Peak SAR (extrapolated) = 1.49 W/kg

SAR(1 g) = 1.14 mW/g; SAR(10 g) = 0.830 mW/g

Total Absorbed Power = 0.074942 W

Maximum value of SAR (measured) = 1.19 mW/g



<Plot 14>

Test Laboratory: Sporton International Inc. SAR/HAC Testing Lab

Date: 2008/9/17

Left Cheek_802.11g Ch6_Volume Scan
DUT: 891114

Communication System: 802.11g; Frequency: 2437 MHz; Duty Cycle: 1:1

Medium: HSL_2450 Medium parameters used: $f = 2437$ MHz; $\sigma = 1.83$ mho/m; $\epsilon_r = 38$; $\rho = 1000$ kg/m³

Ambient Temperature : 22.3 °C; Liquid Temperature : 21.5 °C

DASY5 Configuration:

- Probe: ET3DV6 - SN1787; ConvF(4.49, 4.49, 4.49); Calibrated: 2008/8/26
- Sensor-Surface: 4mm (Mechanical Surface Detection)
- Electronics: DAE3 Sn393; Calibrated: 2008/8/25
- Phantom: SAM-Back; Type: QD 000 P40 C; Serial: TP-1383
- Measurement SW: DASY5, V5.0 Build 119; SEMCAD X Version 13.2 Build 87

Ch6/Volume Scan (10x18x10): Measurement grid: dx=8mm, dy=8mm, dz=5mm

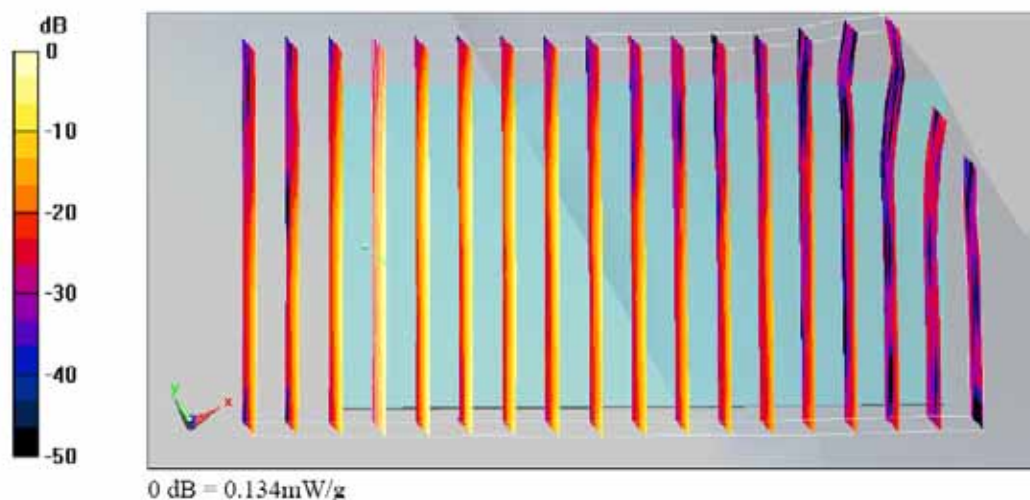
Reference Value = 8.22 V/m; Power Drift = -0.135 dB

Peak SAR (extrapolated) = 0.285 W/kg

SAR(1 g) = 0.128 mW/g; SAR(10 g) = 0.066 mW/g

Total Absorbed Power = 0.00379731 W

Maximum value of SAR (measured) = 0.134 mW/g



<Plot 15>

Test Laboratory: Sporton International Inc. SAR/HAC Testing Lab

Date: 2008/9/17

Left Cheek_CDMA850 Ch1013_Volume Scan_RC1_SO55
DUT: 891114

Communication System: CDMA ; Frequency: 824.7 MHz; Duty Cycle: 1:1

Medium: HSL_850 Medium parameters used: $f = 825 \text{ MHz}$; $\sigma = 0.904 \text{ mho/m}$; $\epsilon_r = 41$; $\rho = 1000 \text{ kg/m}^3$

Phantom section: Left Section

Measurement Standard: DASY5 (IEEE/IEC)

- Probe: ES3DV3 - SN3071; ConvF(6.06, 6.06, 6.06); Calibrated: 2008/1/29
- Sensor-Surface: 4mm (Mechanical Surface Detection)
- Electronics: DAE3 Sn393; Calibrated: 2008/8/25
- Phantom: SAM-Back; Type: QD 000 P40 C; Serial: TP-1383
- Measurement SW: DASY5, V5.0 Build 119

Test Laboratory: Sporton International Inc. SAR/HAC Testing Lab

Date: 2008/9/17

Left Cheek_802.11g Ch6_Volume Scan
DUT: 891114

Communication System: 802.11g; Frequency: 2437 MHz; Duty Cycle: 1:1

Medium: HSL_2450 Medium parameters used: $f = 2437 \text{ MHz}$; $\epsilon_m = 1.83 \text{ mho/m}$; $\epsilon_r = 38$; $\rho = 1000 \text{ kg/m}^3$

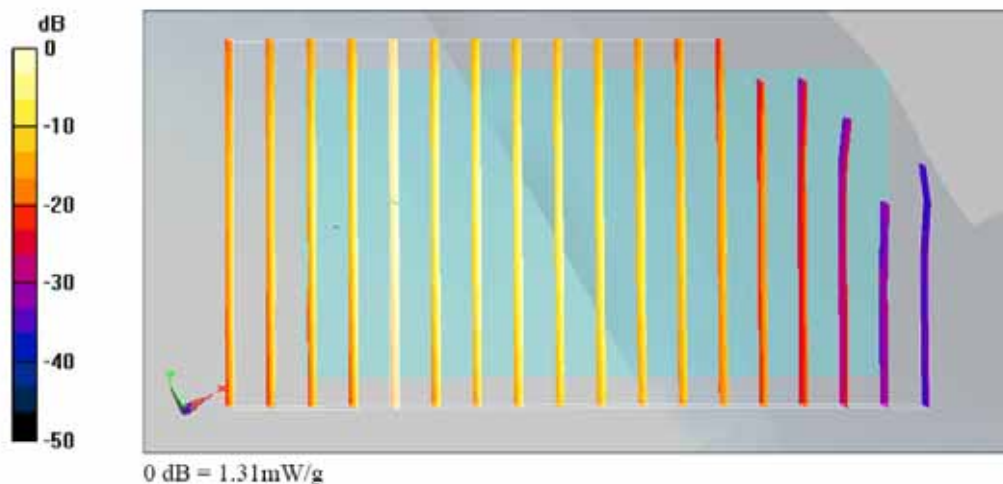
Phantom section: Left Section

Measurement Standard: DASY5 (IEEE/IEC)

- Probe: ET3DV6 - SN1787; ConvF(4.49, 4.49, 4.49); Calibrated: 2008/8/26
- Sensor-Surface: 4mm (Mechanical Surface Detection)
- Electronics: DAE3 Sn393; Calibrated: 2008/8/25
- Phantom: SAM - Front; Type: SAM; Serial: TP-1446
- Measurement SW: DASY5, V5.0 Build 119

Multi Band Result:
SAR(1 g) = 1.24 mW/g; SAR(10 g) = 0.883 mW/g

Maximum value of SAR (measured) = 1.31 mW/g



**<Plot 16>**

Test Laboratory: Sporton International Inc. SAR/HAC Testing Lab

Date: 2008/9/15

Right Cheek_CDMA1900 Ch25_RC3_Volume Scan_SAR Sample**DUT: 811107-03**

Communication System: CDMA ; Frequency: 1851.25 MHz;Duty Cycle: 1:1

Medium: HSL_1900 Medium parameters used : $f = 1851.25$ MHz; $\sigma = 1.35$ mho/m; $\epsilon_r = 41.8$; $\rho = 1000$ kg/m³

Ambient Temperature : 22.5 °C; Liquid Temperature : 21.2 °C

DASY5 Configuration:

- Probe: ET3DV6 - SN1787; ConvF(5.01, 5.01, 5.01); Calibrated: 2008/8/26
- Sensor-Surface: 4mm (Mechanical Surface Detection)
- Electronics: DAE3 Sn393; Calibrated: 2008/8/25
- Phantom: SAM-Back; Type: QD 000 P40 C; Serial: TP-1383
- Measurement SW: DASY5, V5.0 Build 119; SEMCAD X Version 13.2 Build 87

Ch25/Volume Scan (10x18x10): Measurement grid: dx=8mm, dy=8mm, dz=5mm

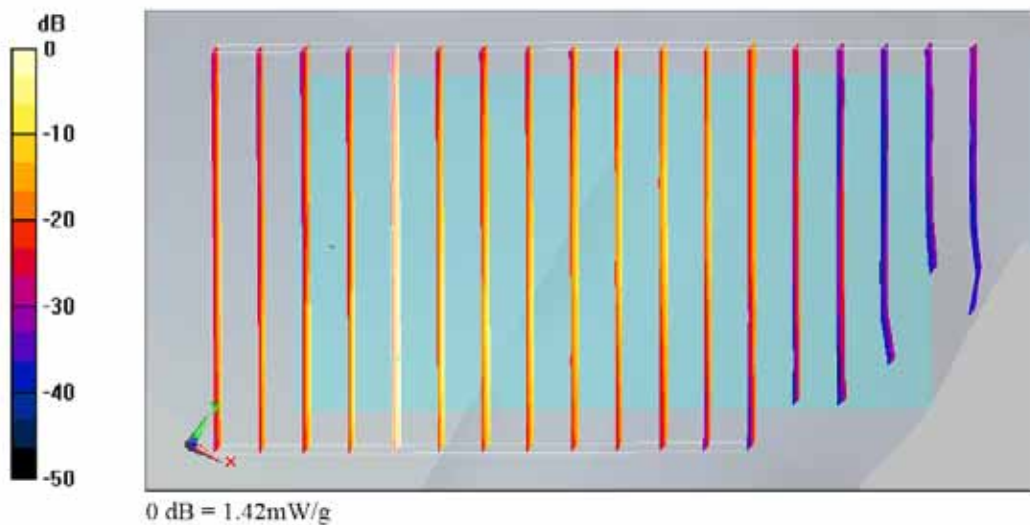
Reference Value = 11.6 V/m; Power Drift = 0.187 dB

Peak SAR (extrapolated) = 2.34 W/kg

SAR(1 g) = 1.3 mW/g; SAR(10 g) = 0.660 mW/g

Total Absorbed Power = 0.0326684 W

Maximum value of SAR (measured) = 1.42 mW/g



<Plot 17>

Test Laboratory: Sporton International Inc. SAR/HAC Testing Lab

Date: 2008/9/14

Right Cheek_802.11g Ch6_Volume Scan
DUT: 891114

Communication System: 802.11g; Frequency: 2437 MHz; Duty Cycle: 1:1

Medium: HSL_2450 Medium parameters used: $f = 2437$ MHz; $\sigma = 1.84$ mho/m; $\epsilon_r = 37.9$; $\rho = 1000$ kg/m³

Ambient Temperature : 22.4 °C; Liquid Temperature : 21.5 °C

DASY5 Configuration:

- Probe: ET3DV6 - SN1787; ConvF(4.49, 4.49, 4.49); Calibrated: 2008/8/26
- Sensor-Surface: 4mm (Mechanical Surface Detection)
- Electronics: DAE3 Sn393; Calibrated: 2008/8/25
- Phantom: SAM-Back; Type: QD 000 P40 C; Serial: TP-1383
- Measurement SW: DASY5, V5.0 Build 119; SEMCAD X Version 13.2 Build 87

Ch6/Volume Scan (10x18x10): Measurement grid: dx=8mm, dy=8mm, dz=5mm

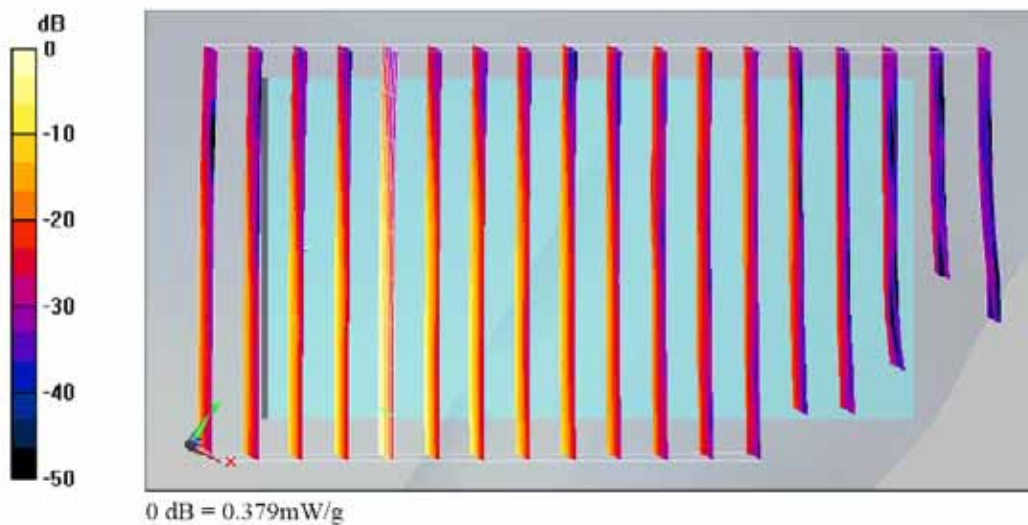
Reference Value = 7.47 V/m; Power Drift = -0.113 dB

Peak SAR (extrapolated) = 0.866 W/kg

SAR(1 g) = 0.339 mW/g; SAR(10 g) = 0.144 mW/g

Total Absorbed Power = 0.00512205 W

Maximum value of SAR (measured) = 0.379 mW/g



**<Plot 18>**

Test Laboratory: Sporton International Inc. SAR/HAC Testing Lab

Date: 2008/9/15

Right Cheek_CDMA1900 Ch25_RC3_Volume Scan_SAR Sample

DUT: 891114

Communication System: CDMA ; Frequency: 1851.25 MHz; Duty Cycle: 1:1

Medium: HSL_1900 Medium parameters used : $f = 1851.25$ MHz; $\sigma = 1.35$ mho/m; $\epsilon_r = 41.8$; $\rho = 1000$ kg/m³

Phantom section: Right Section

Measurement Standard: DASY5 (IEEE/IEC)

- Probe: ET3DV6 - SN1787; ConvF(5.01, 5.01, 5.01); Calibrated: 2008/8/26
- Sensor-Surface: 4mm (Mechanical Surface Detection)
- Electronics: DAE3 Sn393; Calibrated: 2008/8/25
- Phantom: SAM-Back; Type: QD 000 P40 C; Serial: TP-1383
- Measurement SW: DASY5, V5.0 Build 119

Test Laboratory: Sporton International Inc. SAR/HAC Testing Lab

Date: 2008/9/14

Right Cheek_802.11g Ch6_Volume Scan

DUT: 891114

Communication System: 802.11g; Frequency: 2437 MHz; Duty Cycle: 1:1

Medium: HSL_2450 Medium parameters used: $f = 2437$ MHz; $\sigma = 1.84$ mho/m; $\epsilon_r = 37.9$; $\rho = 1000$ kg/m³

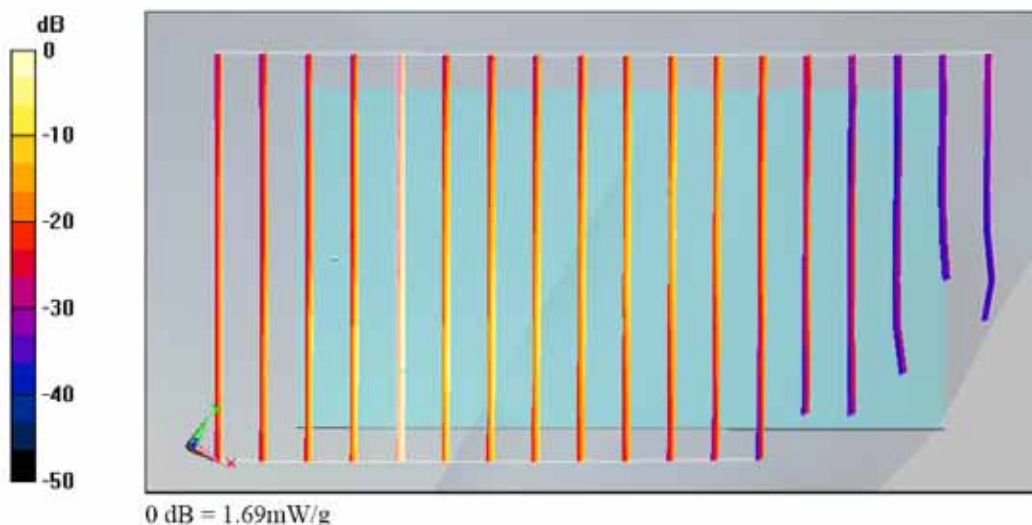
Phantom section: Right Section

Measurement Standard: DASY5 (IEEE/IEC)

- Probe: ET3DV6 - SN1787; ConvF(4.49, 4.49, 4.49); Calibrated: 2008/8/26
- Sensor-Surface: 4mm (Mechanical Surface Detection)
- Electronics: DAE3 Sn393; Calibrated: 2008/8/25
- Phantom: SAM-Back; Type: QD 000 P40 C; Serial: TP-1383
- Measurement SW: DASY5, V5.0 Build 119

Multi Band Result:**SAR(1 g) = 1.53 mW/g; SAR(10 g) = 0.786 mW/g**

Maximum value of SAR (measured) = 1.69 mW/g



**<Plot 19>**

Test Laboratory: Sporton International Inc. SAR/HAC Testing Lab

Date: 2008/9/17

Body_CDMA850 Ch384_Bottom with 1.5cm Gap_RTAP-9.6k_Volume Scan**DUT: 891114**

Communication System: CDMA ; Frequency: 836.52 MHz; Duty Cycle: 1:1

Medium: MSL_850 Medium parameters used: $f = 837$ MHz; $\sigma = 0.991$ mho/m; $\epsilon_r = 56.2$; $\rho = 1000$ kg/m³

Ambient Temperature : 22.5 °C; Liquid Temperature : 21.6 °C

DASY5 Configuration:

- Probe: ET3DV6 - SN1787; ConvF(5.91, 5.91, 5.91); Calibrated: 2008/8/26
- Sensor-Surface: 4mm (Mechanical Surface Detection)
- Electronics: DAE3 Sn393; Calibrated: 2008/8/25
- Phantom: SAM-Back; Type: QD 000 P40 C; Serial: TP-1383
- Measurement SW: DASY5, V5.0 Build 119; SEMCAD X Version 13.2 Build 87

Ch384/Volume Scan (10x18x10): Measurement grid: dx=8mm, dy=8mm, dz=5mm

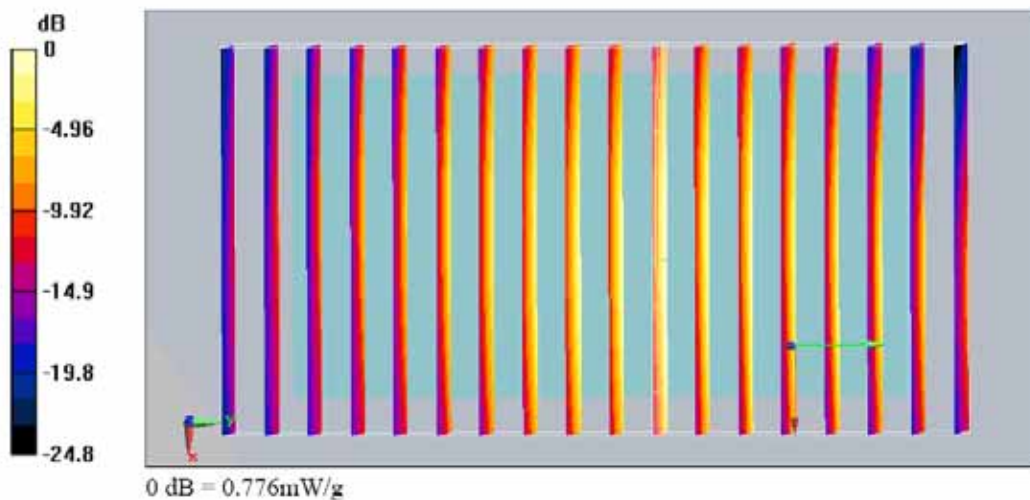
Reference Value = 25.1 V/m; Power Drift = 0.00528 dB

Peak SAR (extrapolated) = 0.974 W/kg

SAR(1 g) = 0.741 mW/g; SAR(10 g) = 0.533 mW/g

Total Absorbed Power = 0.064034 W

Maximum value of SAR (measured) = 0.776 mW/g



**<Plot 20>**

Test Laboratory: Sporton International Inc. SAR/HAC Testing Lab

Date: 2008/9/17

Body_802.11g Ch6_Bottom with 1.5cm Gap_Volume Scan**DUT: 891114**

Communication System: 802.11g; Frequency: 2437 MHz; Duty Cycle: 1:1

Medium: MSL_2450 Medium parameters used: $f = 2437$ MHz; $\sigma = 1.89$ mho/m; $\epsilon_r = 54.2$; $\rho = 1000$ kg/m³

Ambient Temperature : 22.7 °C; Liquid Temperature : 21.4 °C

DASY5 Configuration:

- Probe: ET3DV6 - SN1787; ConvF(3.79, 3.79, 3.79); Calibrated: 2008/8/26
- Sensor-Surface: 4mm (Mechanical Surface Detection)
- Electronics: DAE3 Sn393; Calibrated: 2008/8/25
- Phantom: SAM-Back; Type: QD 000 P40 C; Serial: TP-1383
- Measurement SW: DASY5, V5.0 Build 119; SEMCAD X Version 13.2 Build 87

Ch6/Volume Scan (10x18x10): Measurement grid: dx=8mm, dy=8mm, dz=5mm

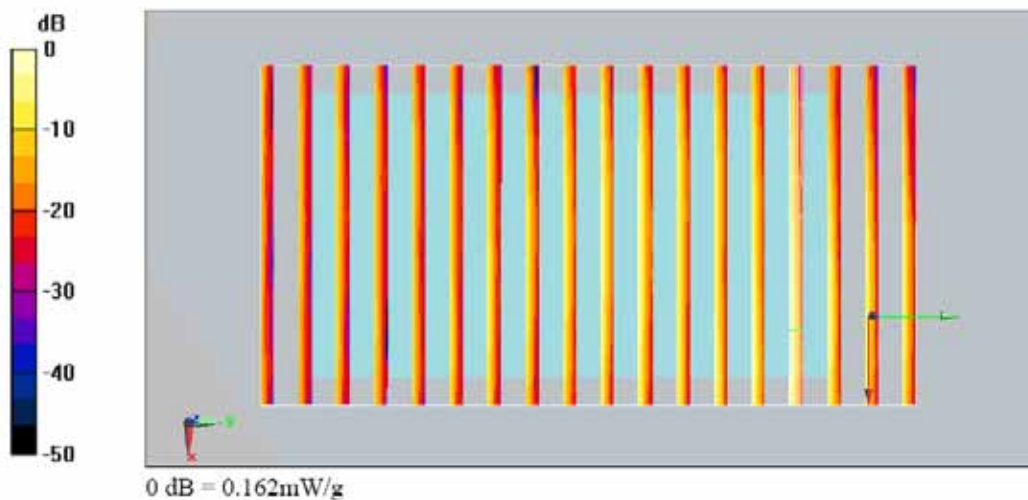
Reference Value = 7.45 V/m; Power Drift = -0.165 dB

Peak SAR (extrapolated) = 0.317 W/kg

SAR(1 g) = 0.155 mW/g; SAR(10 g) = 0.085 mW/g

Total Absorbed Power = 0.00739543 W

Maximum value of SAR (measured) = 0.162 mW/g



**<Plot 21>**

Test Laboratory: Sporton International Inc. SAR/HAC Testing Lab

Date: 2008/9/17

Body_CDMA850 Ch384_Bottom with 1.5cm Gap_RTAP-9.6k_Volume Scan**DUT: 891114**

Communication System: CDMA ; Frequency: 836.52 MHz; Duty Cycle: 1:1

Medium: MSL_850 Medium parameters used: $f = 837$ MHz; $s = 0.991$ mho/m; $\epsilon_r = 56.2$; $\rho = 1000$ kg/m^3

Phantom section: Flat Section

Measurement Standard: DASY5 (IEEE/IEC)

- Probe: ET3DV6 - SN1787; ConvF(5.91, 5.91, 5.91); Calibrated: 2008/8/26
- Sensor-Surface: 4mm (Mechanical Surface Detection)
- Electronics: DAE3 Sn393; Calibrated: 2008/8/25
- Phantom: SAM-Back; Type: QD 000 P40 C; Serial: TP-1383
- Measurement SW: DASY5, V5.0 Build 119

Test Laboratory: Sporton International Inc. SAR/HAC Testing Lab

Date: 2008/9/17

Body_802.11g Ch6_Bottom with 1.5cm Gap_Volume Scan**DUT: 891114**

Communication System: 802.11g; Frequency: 2437 MHz; Duty Cycle: 1:1

Medium: MSL_2450 Medium parameters used: $f = 2437$ MHz; $\sigma = 1.89$ mho/m; $\epsilon_r = 54.2$; $\rho = 1000$ kg/m^3

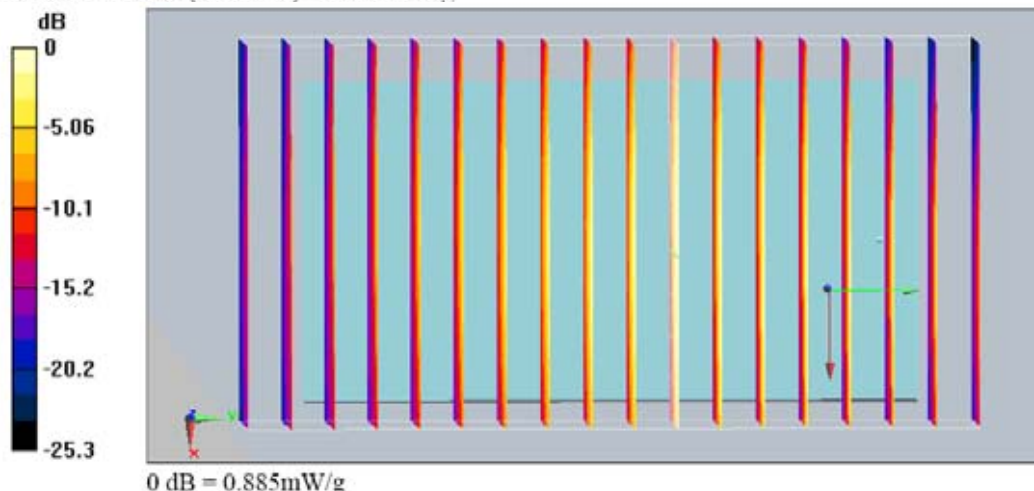
Phantom section: Flat Section

Measurement Standard: DASY5 (IEEE/IEC)

- Probe: ET3DV6 - SN1787; ConvF(3.79, 3.79, 3.79); Calibrated: 2008/8/26
- Sensor-Surface: 4mm (Mechanical Surface Detection)
- Electronics: DAE3 Sn393; Calibrated: 2008/8/25
- Phantom: SAM-Back; Type: QD 000 P40 C; Serial: TP-1383
- Measurement SW: DASY5, V5.0 Build 119

Multi Band Result:**SAR(1 g) = 0.837 mW/g; SAR(10 g) = 0.592 mW/g**

Maximum value of SAR (measured) = 0.885 mW/g



**<Plot 22>**

Test Laboratory: Sporton International Inc. SAR/HAC Testing Lab

Date: 2008/9/17

Body_CDMA1900 Ch1175_Bottom with 1.5cm Gap_RETAP-128_Volume Scan**DUT: 891114**

Communication System: CDMA ; Frequency: 1908.75 MHz; Duty Cycle: 1:1

Medium: MSL_1900 Medium parameters used: $f = 1909$ MHz; $\sigma = 1.54$ mho/m; $\epsilon_r = 52.2$; $\rho = 1000$ kg/m³

Ambient Temperature : 22.6 °C; Liquid Temperature : 21.6 °C

DASY5 Configuration:

- Probe: ET3DV6 - SN1787; ConvF(4.49, 4.49, 4.49); Calibrated: 2008/8/26
- Sensor-Surface: 4mm (Mechanical Surface Detection)
- Electronics: DAE3 Sn393; Calibrated: 2008/8/25
- Phantom: SAM - Front; Type: SAM; Serial: TP-1446
- Measurement SW: DASY5, V5.0 Build 119; SEMCAD X Version 13.2 Build 87

Ch1175/Volume Scan (10x18x10): Measurement grid: dx=8mm, dy=8mm, dz=5mm

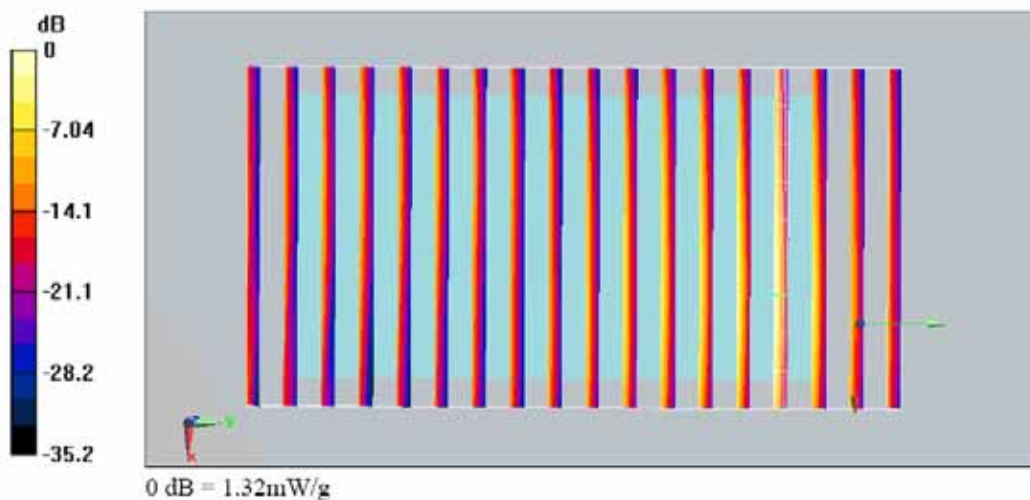
Reference Value = 23.4 V/m; Power Drift = -0.131 dB

Peak SAR (extrapolated) = 2.36 W/kg

SAR(1 g) = 1.23 mW/g; SAR(10 g) = 0.661 mW/g

Total Absorbed Power = 0.0438053 W

Maximum value of SAR (measured) = 1.32 mW/g



<Plot 23>

Test Laboratory: Sporton International Inc. SAR/HAC Testing Lab

Date: 2008/9/17

Body_802.11g Ch6_Bottom with 1.5cm Gap_Volume Scan
DUT: 891114

Communication System: 802.11g; Frequency: 2437 MHz; Duty Cycle: 1:1

Medium: MSL_2450 Medium parameters used: $f = 2437 \text{ MHz}$; $\sigma = 1.89 \text{ mho/m}$; $\epsilon_r = 54.2$; $\rho = 1000 \text{ kg/m}^3$

Ambient Temperature : 22.7 °C; Liquid Temperature : 21.4 °C

DASY5 Configuration:

- Probe: ET3DV6 - SN1787; ConvF(3.79, 3.79, 3.79); Calibrated: 2008/8/26
- Sensor-Surface: 4mm (Mechanical Surface Detection)
- Electronics: DAE3 Sn393; Calibrated: 2008/8/25
- Phantom: SAM-Back; Type: QD 000 P40 C; Serial: TP-1383
- Measurement SW: DASY5, V5.0 Build 119; SEMCAD X Version 13.2 Build 87

Ch6/Volume Scan (10x18x10): Measurement grid: $dx=8\text{mm}$, $dy=8\text{mm}$, $dz=5\text{mm}$

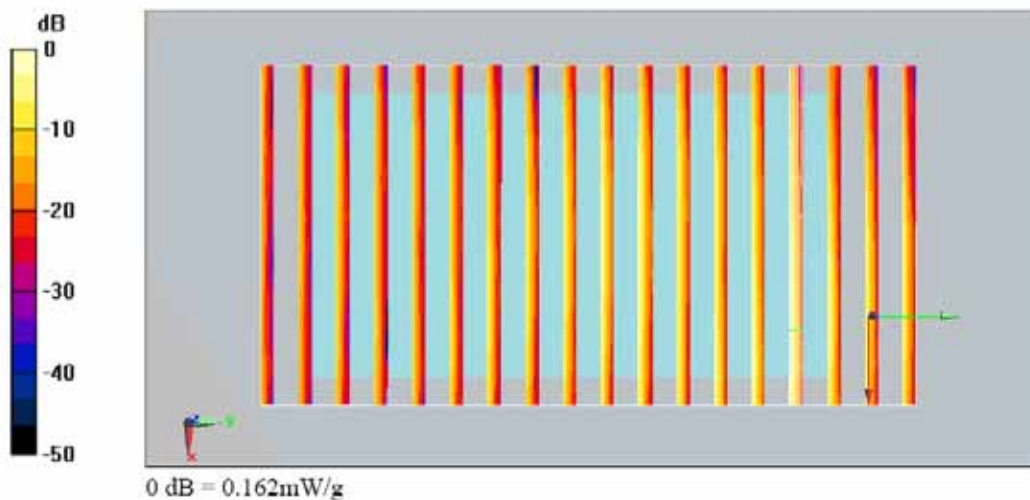
Reference Value = 7.45 V/m; Power Drift = -0.165 dB

Peak SAR (extrapolated) = 0.317 W/kg

SAR(1 g) = 0.155 mW/g; SAR(10 g) = 0.085 mW/g

Total Absorbed Power = 0.00739543 W

Maximum value of SAR (measured) = 0.162 mW/g



**<Plot 24>**

Test Laboratory: Sporton International Inc. SAR/HAC Testing Lab

Date: 2008/9/17

Body_CDMA1900 Ch1175_Bottom with 1.5cm Gap_RETAP-128_Volume Scan

DUT: 891114

Communication System: CDMA ; Frequency: 1908.75 MHz; Duty Cycle: 1:1

Medium: MSL_1900 Medium parameters used: $f = 1909$ MHz; $\sigma = 1.54$ mho/m; $\epsilon_r = 52.2$; $\rho = 1000$ kg/m³

Phantom section: Flat Section

Measurement Standard: DASY5 (IEEE/IEC)

- Probe: ET3DV6 - SN1787; ConvF(4.49, 4.49, 4.49); Calibrated: 2008/8/26
- Sensor-Surface: 4mm (Mechanical Surface Detection)
- Electronics: DAE3 Sn393; Calibrated: 2008/8/25
- Phantom: SAM - Front; Type: SAM; Serial: TP-1446
- Measurement SW: DASY5, V5.0 Build 119

Test Laboratory: Sporton International Inc. SAR/HAC Testing Lab

Date: 2008/9/17

Body_802.11g Ch6_Bottom with 1.5cm Gap_Volume Scan

DUT: 891114

Communication System: 802.11g; Frequency: 2437 MHz; Duty Cycle: 1:1

Medium: MSL_2450 Medium parameters used: $f = 2437$ MHz; $\sigma = 1.89$ mho/m; $\epsilon_r = 54.2$; $\rho = 1000$ kg/m³

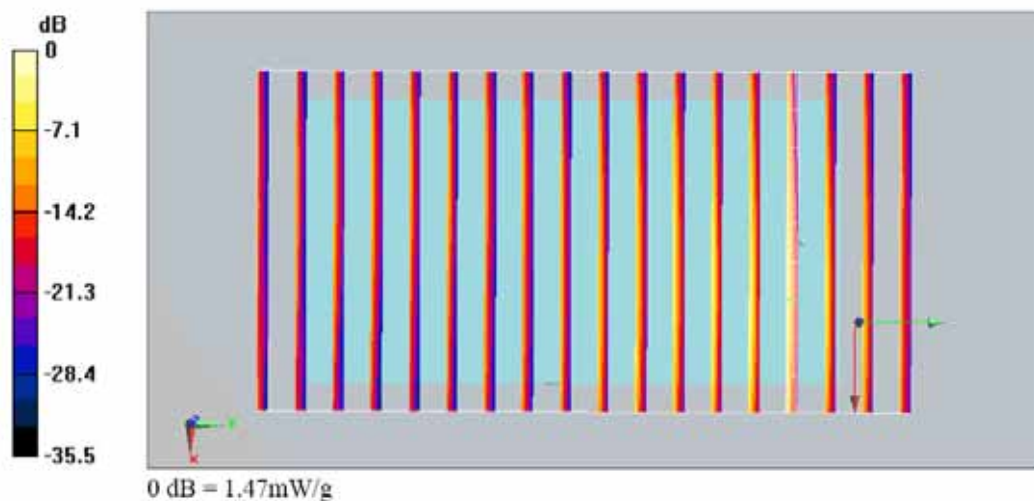
Phantom section: Flat Section

Measurement Standard: DASY5 (IEEE/IEC)

- Probe: ET3DV6 - SN1787; ConvF(3.79, 3.79, 3.79); Calibrated: 2008/8/26
- Sensor-Surface: 4mm (Mechanical Surface Detection)
- Electronics: DAE3 Sn393; Calibrated: 2008/8/25
- Phantom: SAM-Back; Type: QD 000 P40 C; Serial: TP-1383
- Measurement SW: DASY5, V5.0 Build 119

Multi Band Result:**SAR(1 g) = 1.36 mW/g; SAR(10 g) = 0.733 mW/g**

Maximum value of SAR (measured) = 1.47 mW/g





Test Laboratory: Sporton International Inc. SAR/HAC Testing Lab

Date: 2008/9/17

Left Cheek_CDMA850 Ch1013_RC1_SO55_2D**DUT: 891114**

Communication System: CDMA ; Frequency: 824.7 MHz; Duty Cycle: 1:1

Medium: HSL_850 Medium parameters used: $f = 825$ MHz; $\sigma = 0.904$ mho/m; $\epsilon_r = 41$; $\rho = 1000$ kg/m³

Ambient Temperature : 22.7 °C; Liquid Temperature : 21.7 °C

DASY5 Configuration:

- Probe: ES3DV3 - SN3071; ConvF(6.06, 6.06, 6.06); Calibrated: 2008/1/29
- Sensor-Surface: 4mm (Mechanical Surface Detection)
- Electronics: DAE3 Sn393; Calibrated: 2008/8/25
- Phantom: SAM - Front; Type: SAM; Serial: TP-1446
- Measurement SW: DASY5, V5.0 Build 119; SEMCAD X Version 13.2 Build 87

Ch1013/Area Scan (51x91x1): Measurement grid: dx=15mm, dy=15mm

Maximum value of SAR (interpolated) = 1.47 mW/g

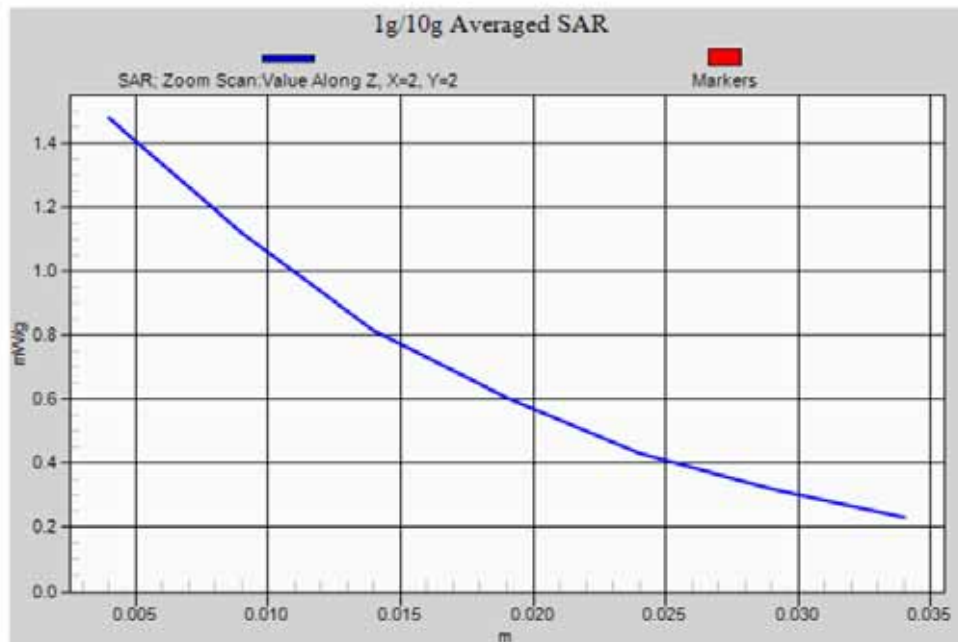
Ch1013/Zoom Scan (5x5x7)/Cube 0: Measurement grid: dx=8mm, dy=8mm, dz=5mm

Reference Value = 36.2 V/m; Power Drift = -0.055 dB

Peak SAR (extrapolated) = 1.85 W/kg

SAR(1 g) = 1.37 mW/g; SAR(10 g) = 0.983 mW/g

Maximum value of SAR (measured) = 1.48 mW/g





Test Laboratory: Sporton International Inc. SAR/HAC Testing Lab

Date: 2008/9/12

Right Cheek_CDMA1900 Ch25_RC3_SO55_YE2-6010_2D**DUT: 891114**

Communication System: CDMA ; Frequency: 1851.25 MHz; Duty Cycle: 1:1

Medium: HSL_1900 Medium parameters used: $f = 1851.25$ MHz; $\sigma = 1.36$ mho/m; $\epsilon_r = 41.9$; $\rho = 1000$ kg/m³

Ambient Temperature : 22.7 °C; Liquid Temperature : 21.5 °C

DASY4 Configuration:

- Probe: ES3DV3 - SN3071; ConvF(4.78, 4.78, 4.78); Calibrated: 2008/1/29
- Sensor-Surface: 4mm (Mechanical Surface Detection)
- Electronics: DAE3 Sn577; Calibrated: 2007/11/16
- Phantom: SAM-Right; Type: QD 000 P40 C; Serial: TP-1383
- Measurement SW: DASY4, V4.7 Build 71; Postprocessing SW: SEMCAD, V1.8 Build 184

Ch25/Area Scan (51x91x1): Measurement grid: dx=15mm, dy=15mm

Maximum value of SAR (interpolated) = 1.58 mW/g

Ch25/Zoom Scan (5x5x7)/Cube 0: Measurement grid: dx=8mm, dy=8mm, dz=5mm

Reference Value = 9.44 V/m; Power Drift = 0.006 dB

Peak SAR (extrapolated) = 2.62 W/kg

SAR(1 g) = 1.4 mW/g; SAR(10 g) = 0.706 mW/g

Maximum value of SAR (measured) = 1.60 mW/g



Test Laboratory: Sporton International Inc. SAR/HAC Testing Lab

Date: 2008/9/17

Body_CDMA850 Ch384_Bottom with 1.5cm Gap_RTAP-9.6k_2D
DUT: 891114

Communication System: CDMA ; Frequency: 836.52 MHz; Duty Cycle: 1:1

Medium: MSL_850 Medium parameters used: $f = 837 \text{ MHz}$; $\sigma = 0.991 \text{ mho/m}$; $\epsilon_r = 56.2$; $\rho = 1000 \text{ kg/m}^3$

Ambient Temperature : 22.6 °C; Liquid Temperature : 21.6 °C

DASY5 Configuration:

- Probe: ET3DV6 - SN1787; ConvF(5.91, 5.91, 5.91); Calibrated: 2008/8/26
- Sensor-Surface: 4mm (Mechanical Surface Detection)
- Electronics: DAE3 Sn393; Calibrated: 2008/8/25
- Phantom: SAM-Back; Type: QD 000 P40 C; Serial: TP-1383
- Measurement SW: DASY5, V5.0 Build 119; SEMCAD X Version 13.2 Build 87

Ch384/Area Scan (51x91x1): Measurement grid: dx=15mm, dy=15mm

Maximum value of SAR (interpolated) = 0.790 mW/g

Ch384/Zoom Scan (5x5x7)/Cube 0: Measurement grid: dx=8mm, dy=8mm, dz=5mm

Reference Value = 25.1 V/m; Power Drift = -0.135 dB

Peak SAR (extrapolated) = 0.968 W/kg

SAR(1 g) = 0.758 mW/g; SAR(10 g) = 0.549 mW/g

Maximum value of SAR (measured) = 0.801 mW/g

Ch384/Zoom Scan (5x5x7)/Cube 1: Measurement grid: dx=8mm, dy=8mm, dz=5mm

Reference Value = 25.1 V/m; Power Drift = -0.135 dB

Peak SAR (extrapolated) = 0.864 W/kg

SAR(1 g) = 0.563 mW/g; SAR(10 g) = 0.377 mW/g

Maximum value of SAR (measured) = 0.614 mW/g





Test Laboratory: Sporton International Inc. SAR/HAC Testing Lab

Date: 2008/9/16

Body_CDMA1900 Ch1175_Bottom with 1.5cm Gap_RETAP-128_2D**DUT: 891114**

Communication System: CDMA ; Frequency: 1908.75 MHz; Duty Cycle: 1:1

Medium: MSL_1900 Medium parameters used: $f = 1909$ MHz; $\sigma = 1.54$ mho/m; $\epsilon_r = 52.2$; $\rho = 1000$ kg/m³

Ambient Temperature : 22.6 °C ; Liquid Temperature : 21.6 °C

DASY5 Configuration:

- Probe: ET3DV6 - SN1787; ConvF(4.49, 4.49, 4.49); Calibrated: 2008/8/26
- Sensor-Surface: 4mm (Mechanical Surface Detection)
- Electronics: DAE3 Sn393; Calibrated: 2008/8/25
- Phantom: SAM - Front; Type: SAM; Serial: TP-1446
- Measurement SW: DASY5, V5.0 Build 119; SEMCAD X Version 13.2 Build 87

Ch1175/Area Scan (51x91x1): Measurement grid: dx=15mm, dy=15mm

Maximum value of SAR (interpolated) = 1.33 mW/g

Ch1175/Zoom Scan (5x5x7)/Cube 0: Measurement grid: dx=8mm, dy=8mm, dz=5mm

Reference Value = 26.6 V/m; Power Drift = -0.144 dB

Peak SAR (extrapolated) = 2.46 W/kg

SAR(1 g) = 1.29 mW/g; SAR(10 g) = 0.689 mW/g

Maximum value of SAR (measured) = 1.41 mW/g

