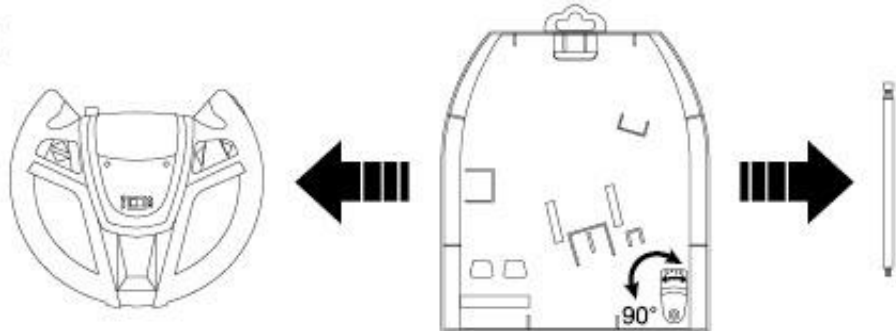


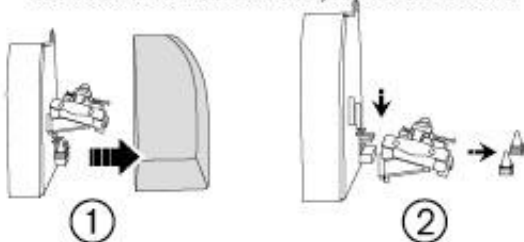


### Preparation:

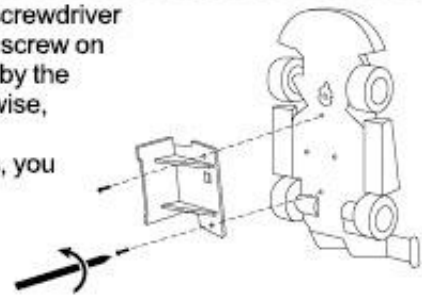
1. Turn the lock that under the base for 90°, and take out the controller and antenna.



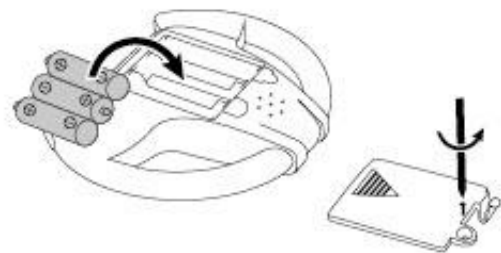
2. (1) Rip off the paster, pull up the clear cover by the direction of arrow.  
(2) Press the middle button, remove the Kart.



3. Use a philips screwdriver to remove two screw on the base back by the counter-clockwise, under this circumstances, you will be gets a delicate kart.

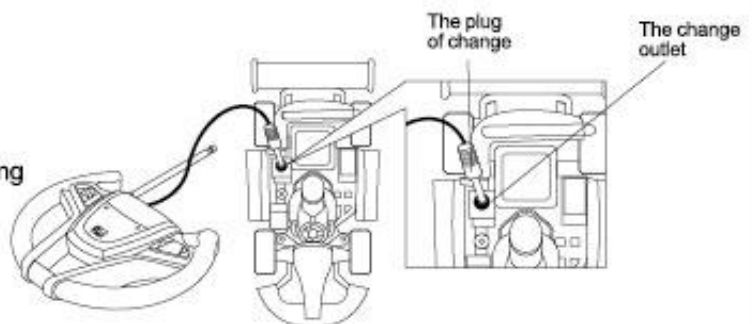


4. Use a philips screwdriver to open the battery cover, press the right Polarity into three 1.5V "AA" batteries and cover the battery cover.



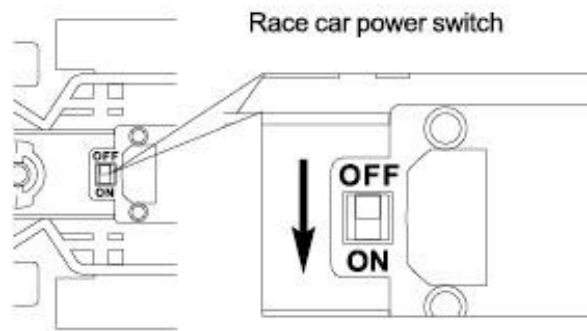
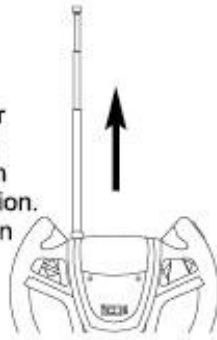
### Charge:

Open the charging cover of controller, plug out the charging jack, and aim at the charging outlet of the R/C car, the charging indicator light will light up. And then, the charging indicator light will go off automatically after about 5 minutes passed, it means that R/C car is fully recharged.



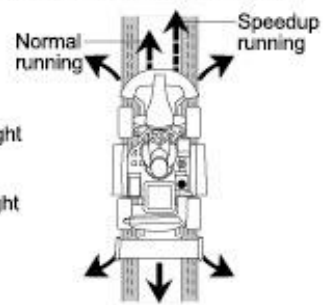
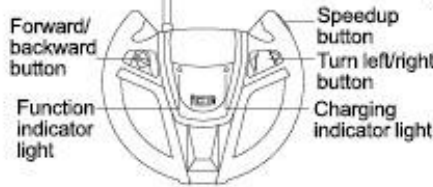
## Operation:

1. Extend the transmitter antenna when in use; Slide the power switch of the car to "ON" position. Place the racing car on the flat place,

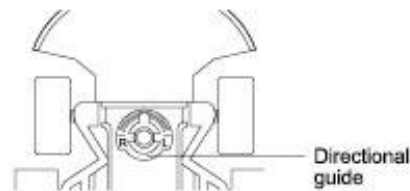


## 2. Controller button function:

- (1) Press the controller button, the indicator light on the controller will light up follows you press the controller button. (Press any button on the controller, the controller function indicator light will light up).
- (2) When pressing the forward/backward button, the racing car will go forward/backward, meanwhile, the front light will light up.
- (3) When pressing the forward/backward button, and also press down the turn left/right button, the racing car will turn left/right.
- (4) Press the speedup button while forward, the racing car will speed up; The racing car will speed down automatically while press the left/right button this safety feature will result in the reduction of accidents.
- (5) To facilitate the operation. Button on the remote control has accelerated. Play racing process, press the speed button, the car will speed up progress.



3. The directional guide on the bottom of the car can be used to adjust the car's straight-line-running performance.



## Caution:

- a). Do not touch the antenna during operating, or the controlled distance may be affected; The antenna breaks to need adult is processing.
- b). This racing car has strong driving force, when it is high speed running that cannot suddenly stop as a result of the inertia, please use carefully.
- c). If the car becomes apparently slower during operation, it might due to insufficient power, please charge the car follow the illustration.
- d). The car should decelerate when turning rapidly or reversing, or the car may turn over.
- e). Replace the new batteries of the controller if they lack of power, the car can't be charge the indicator lamp turns dim.
- f). Pay attention to the plug of charge & the charge position when charging.
- g). Please remove the battery of the controller and turn the power of racing car switch to "OFF" position when it is not used for a long time.
- h). Non rechargeable batteries are not to be recharged.
- i). Old and new batteries or different types of batteries are not to be mixed.
- j). Batteries are to be inserted with the correct polarity, avoid install of mistake.
- k). Do not short circuit the batteries terminals.
- l). Remove the packing under adult supervision.
- m). Please retain the above information for future reference.

changes or modifications not expressly approved by the party responsible for compliance could void the user's authority to operate the equipment.

This equipment has been tested and found to comply with the limits for a Class B digital device, pursuant to Part 15 of the FCC Rules. These limits are designed to provide reasonable protection against harmful interference in a residential installation. This equipment generates, uses and can radiate radio frequency energy and, if not installed and used in accordance with the instructions, may cause harmful interference to radio communications. However, there is no guarantee that interference will not occur in a particular installation.

If this equipment does cause harmful interference to radio or television reception, which can be determined by turning the equipment off and on, the user is encouraged to try to correct the interference by one or more of the following measures:

- Reorient or relocate the receiving antenna.
- Increase the separation between the equipment and receiver.
- Connect the equipment into an outlet on a circuit different from that to which the receiver is connected.
- Consult the dealer or an experienced radio/TV technician for help.