

2.8. Test Photo

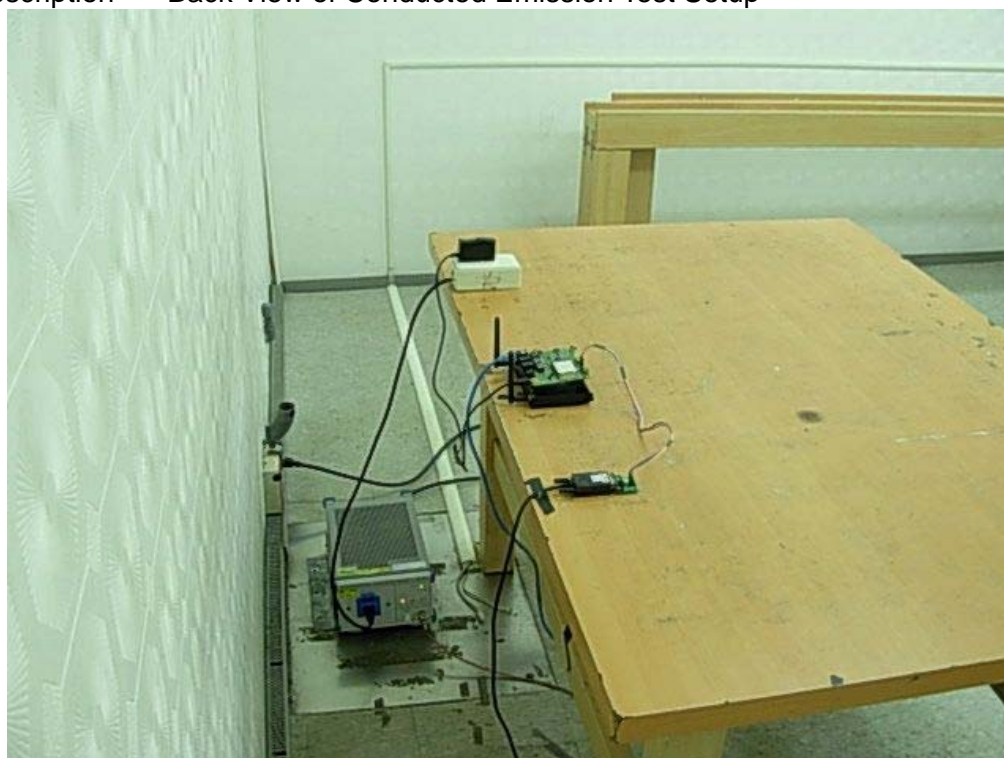
Test Mode : Mode 1: Transmit (Ant.: Dipole)

Description : Front View of Conducted Emission Test Setup



Test Mode : Mode 1: Transmit (Ant.: Dipole)

Description : Back View of Conducted Emission Test Setup



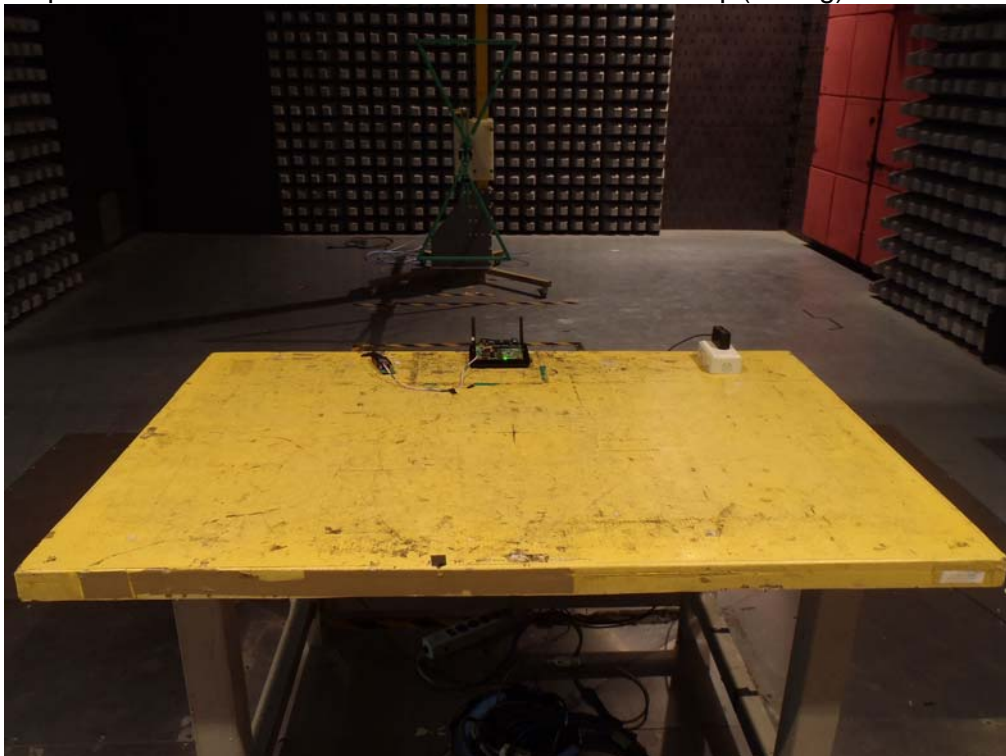
Test Mode : Mode 1: Transmit (Ant.: Dipole)
Description : Near Photo



4.8. Test Photo

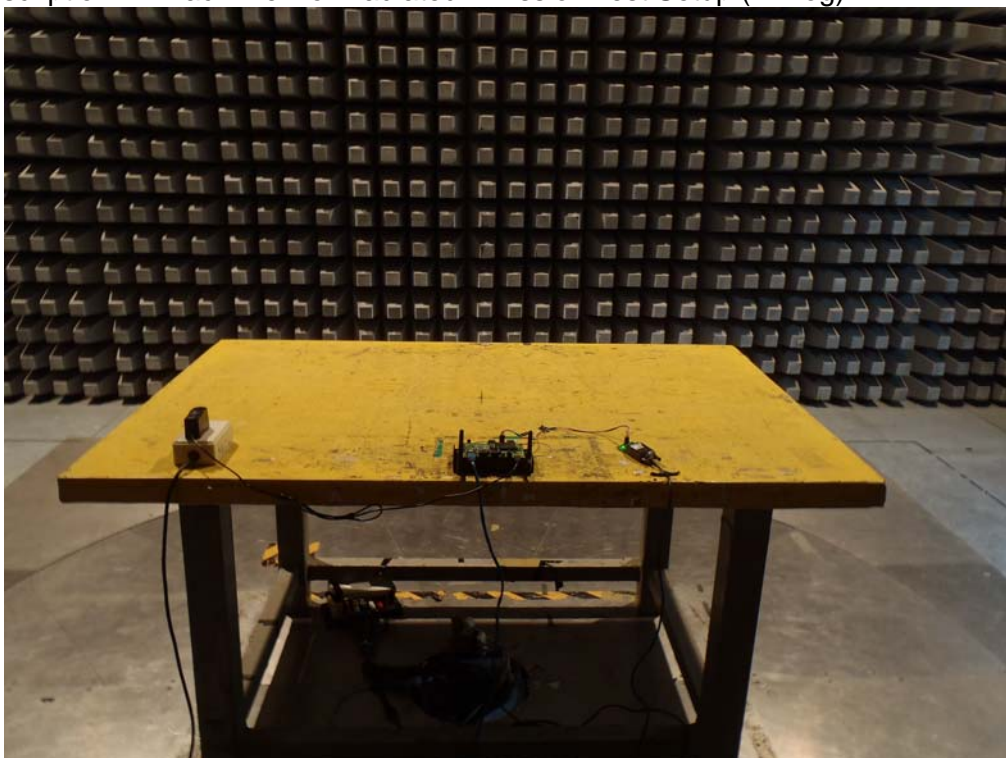
Test Mode : Mode 1: Transmit (Ant.: Dipole)

Description : Front View of Radiated Emission Test Setup (Bi-Log)



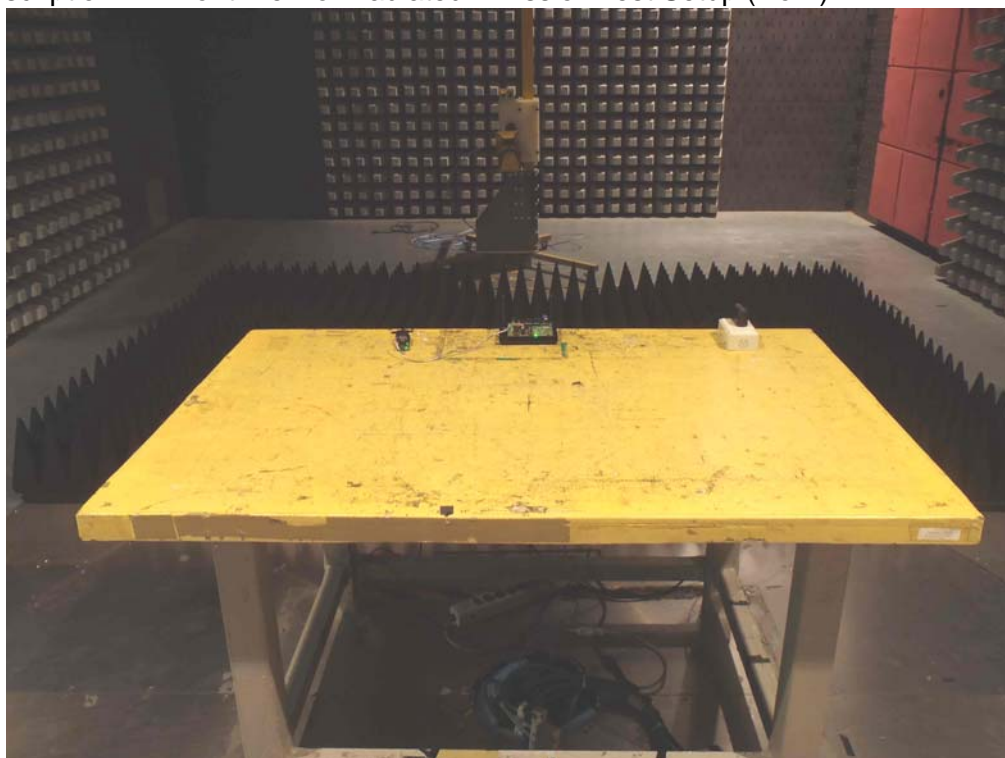
Test Mode : Mode 1: Transmit (Ant.: Dipole)

Description : Back View of Radiated Emission Test Setup (Bi-Log)



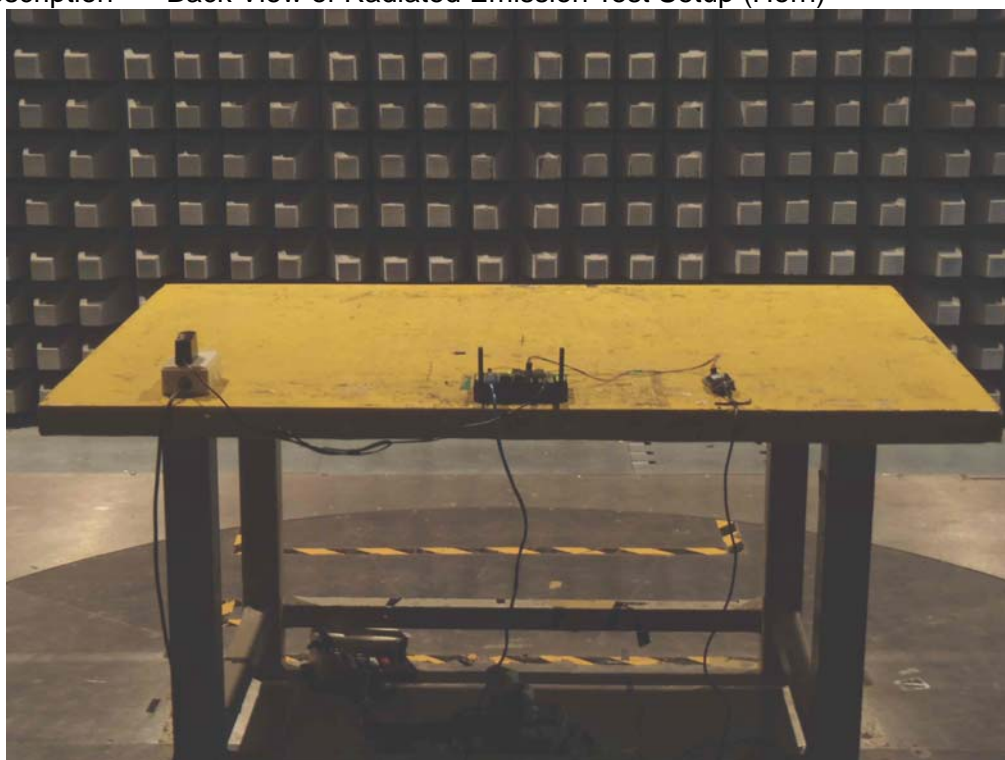
Test Mode : Mode 1: Transmit (Ant.: Dipole)

Description : Front View of Radiated Emission Test Setup (Horn)



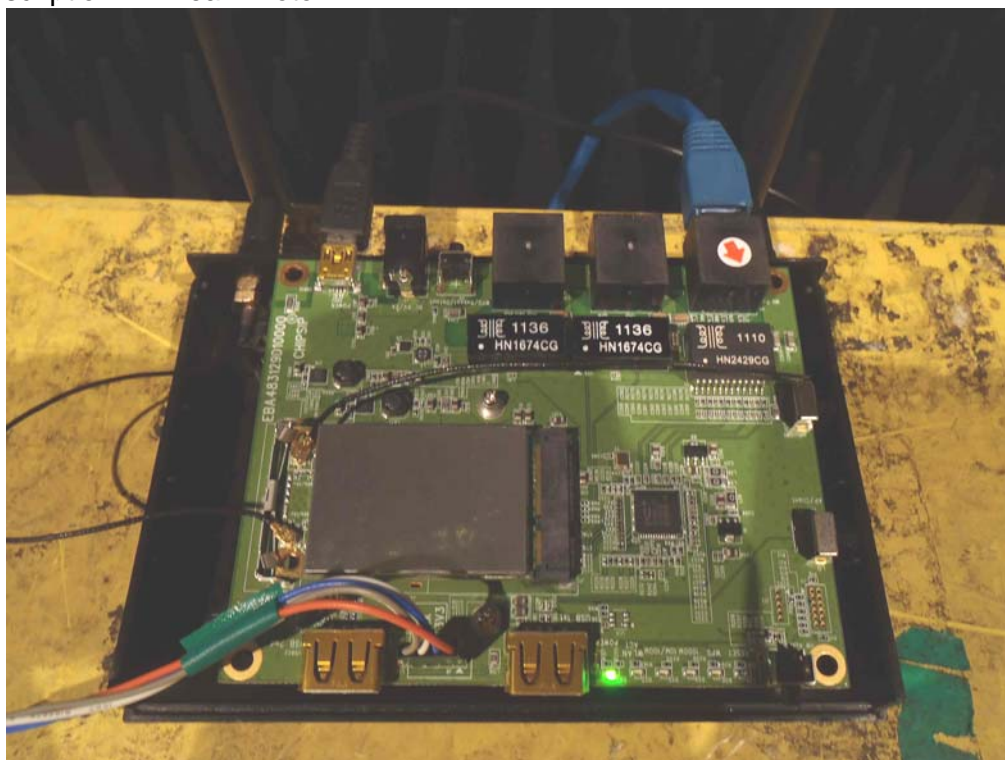
Test Mode : Mode 1: Transmit (Ant.: Dipole)

Description : Back View of Radiated Emission Test Setup (Horn)



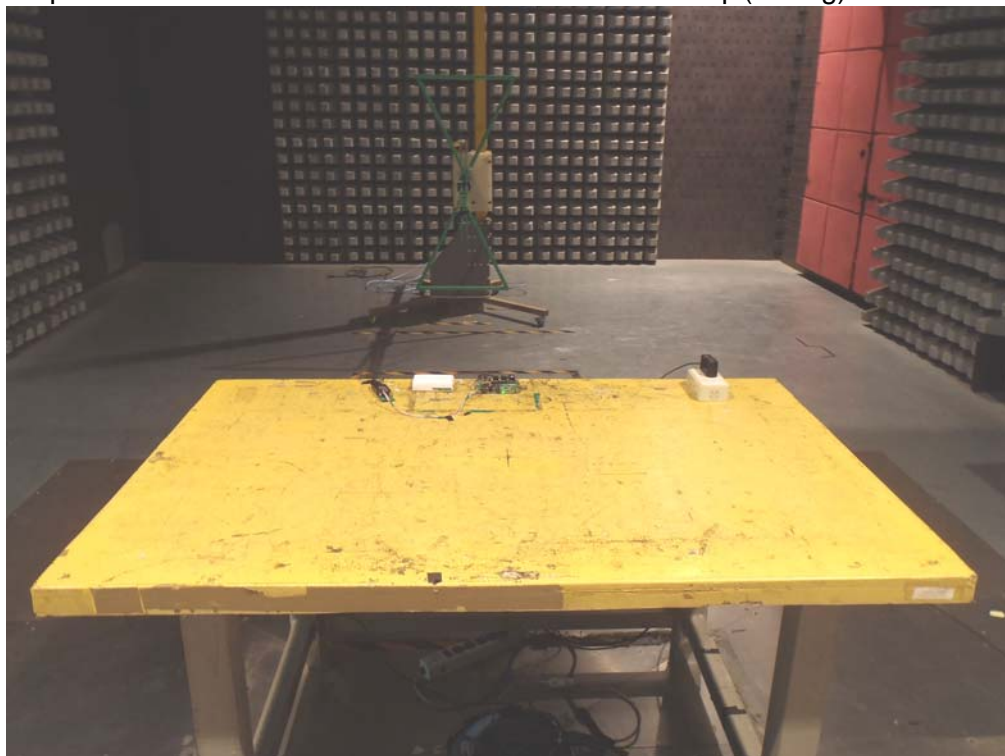
Test Mode : Mode 1: Transmit (Ant.: Dipole)

Description : Near Photo



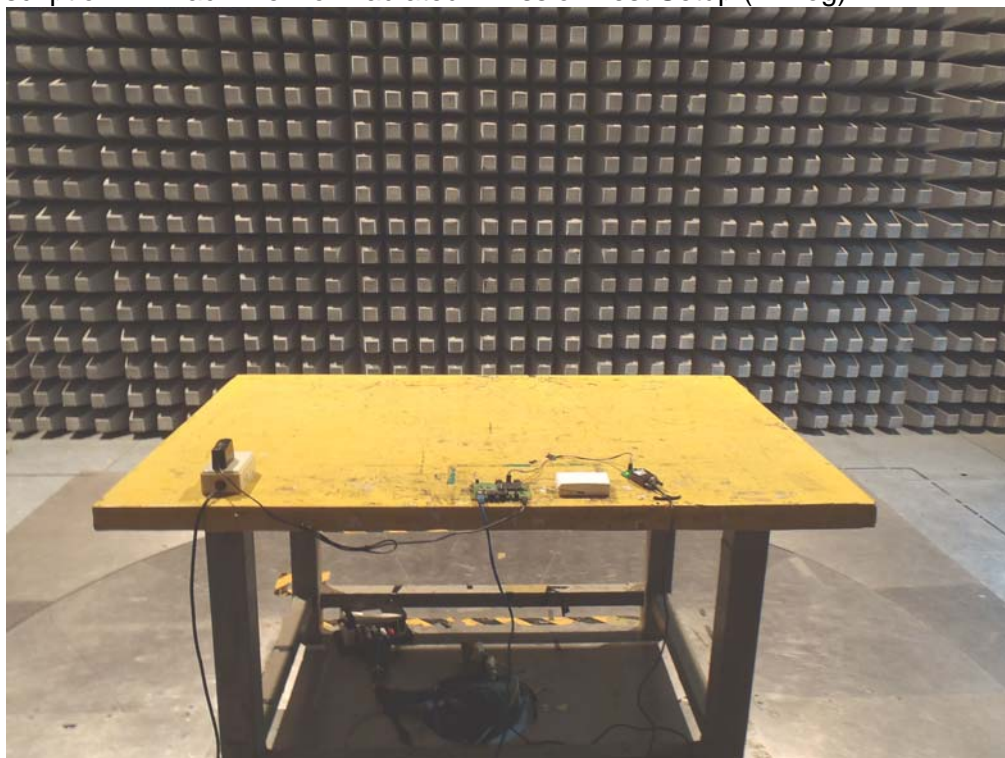
Test Mode : Mode 2: Transmit (Ant.: PCB)

Description : Front View of Radiated Emission Test Setup (Bi-Log)



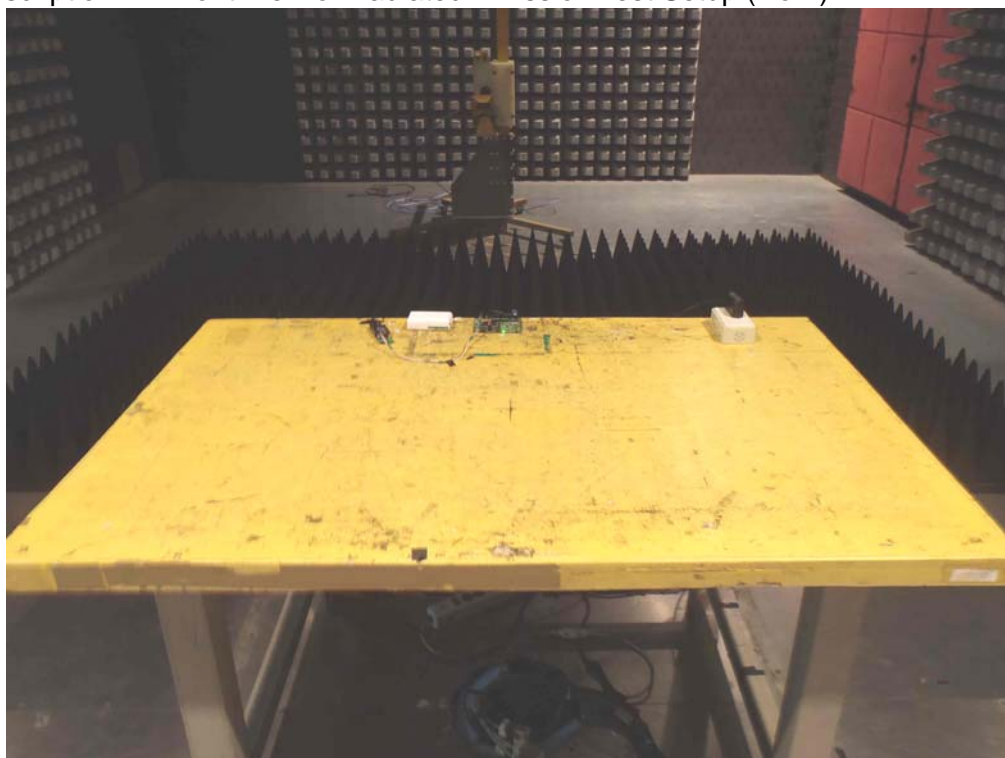
Test Mode : Mode 2: Transmit (Ant.: PCB)

Description : Back View of Radiated Emission Test Setup (Bi-Log)



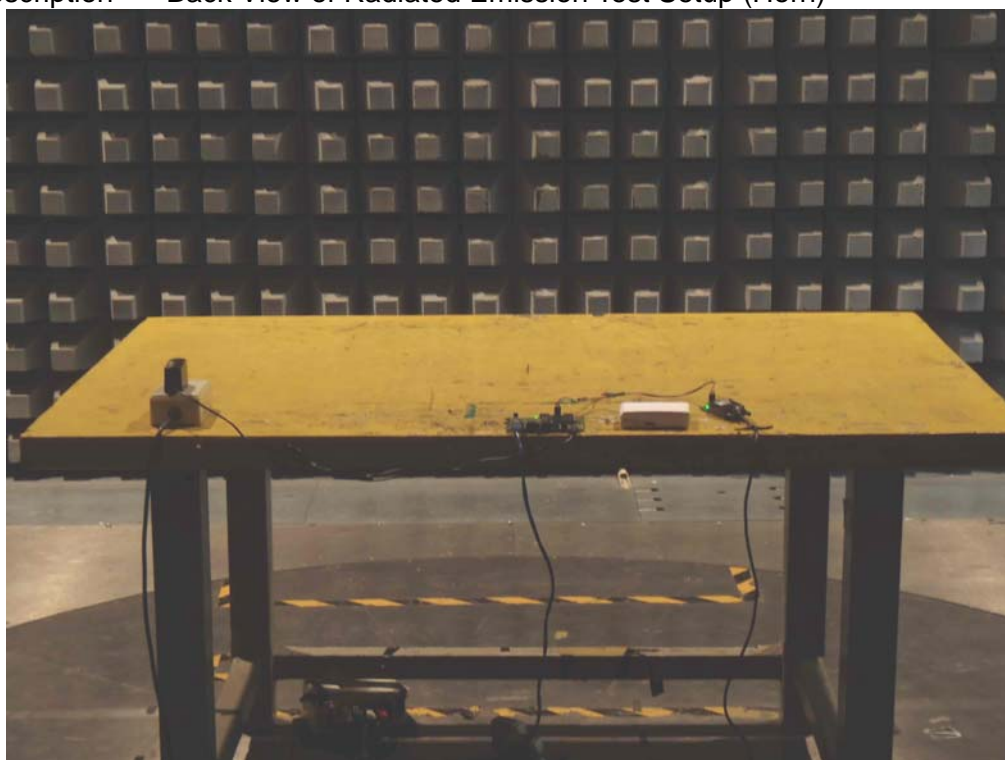
Test Mode : Mode 2: Transmit (Ant.: PCB)

Description : Front View of Radiated Emission Test Setup (Horn)



Test Mode : Mode 2: Transmit (Ant.: PCB)

Description : Back View of Radiated Emission Test Setup (Horn)



Test Mode : Mode 2: Transmit (Ant.: PCB)
Description : Near Photo

