



360 Herndon Parkway
Suite 1400
Herndon, VA 20170
<http://www.rheintech.com>

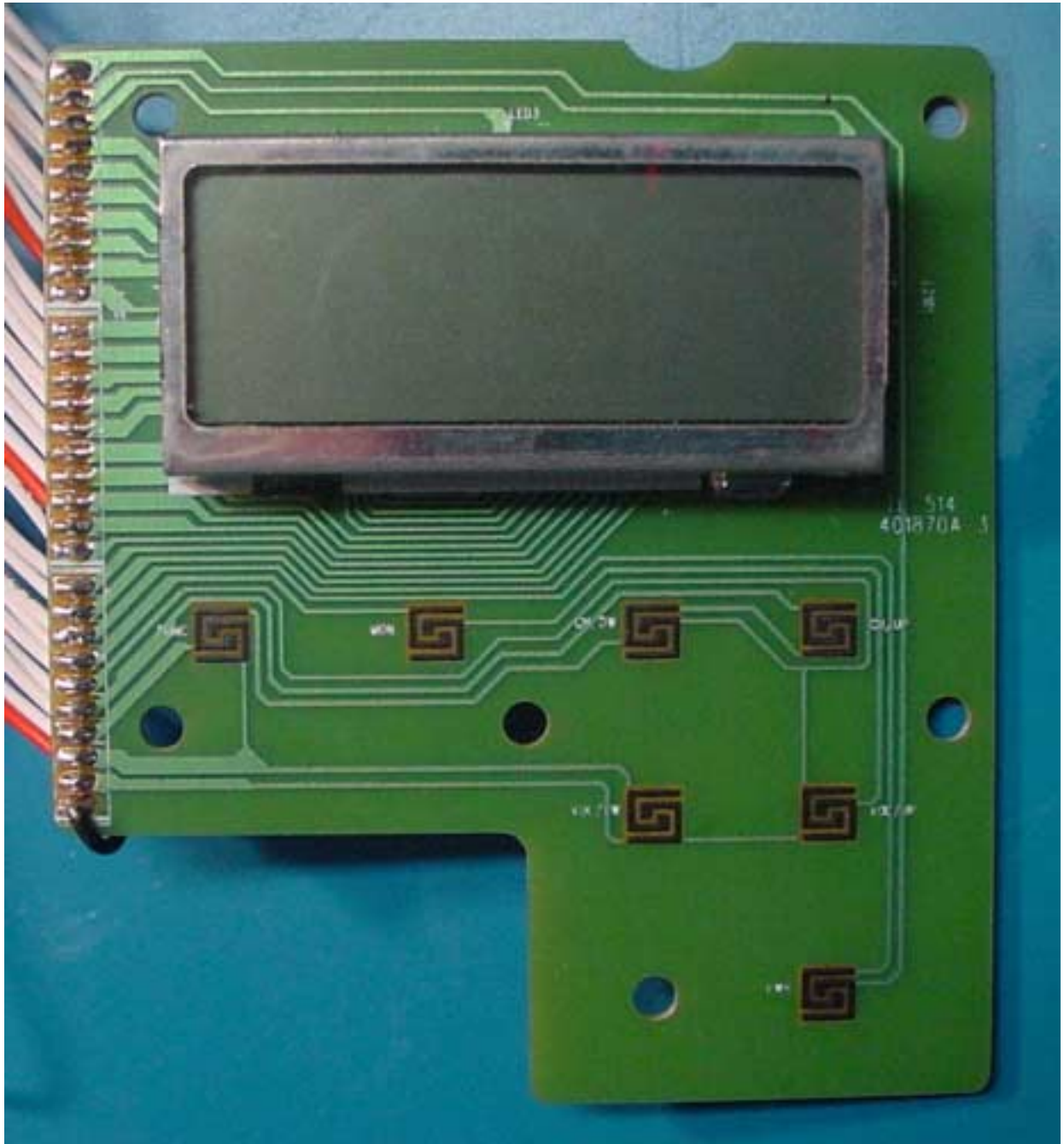
20 INTERNAL PHOTOGRAPHS



10 and 100 pF caps



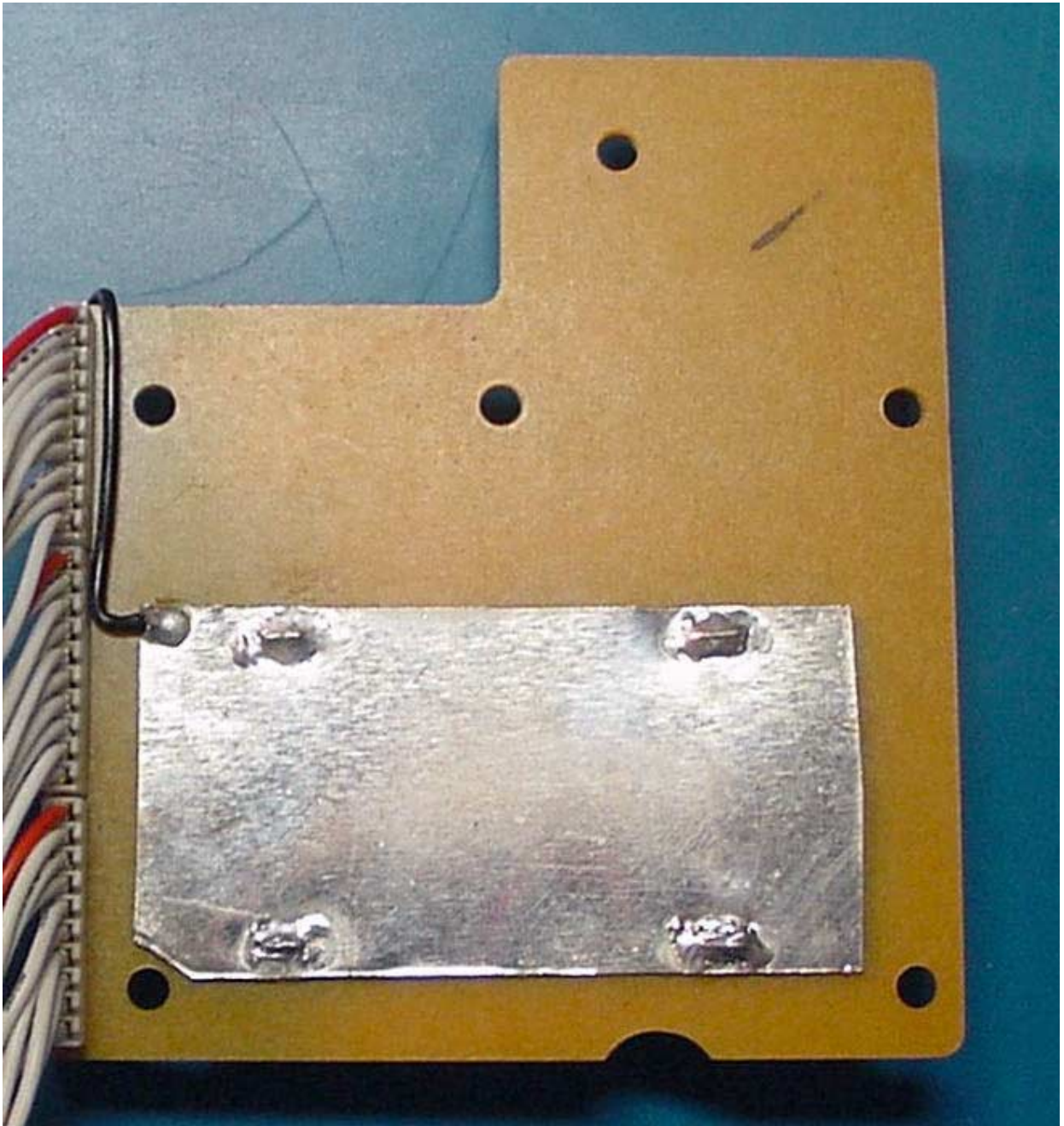
360 Herndon Parkway
Suite 1400
Herndon, VA 20170
<http://www.rheintech.com>



top of LCD PCB



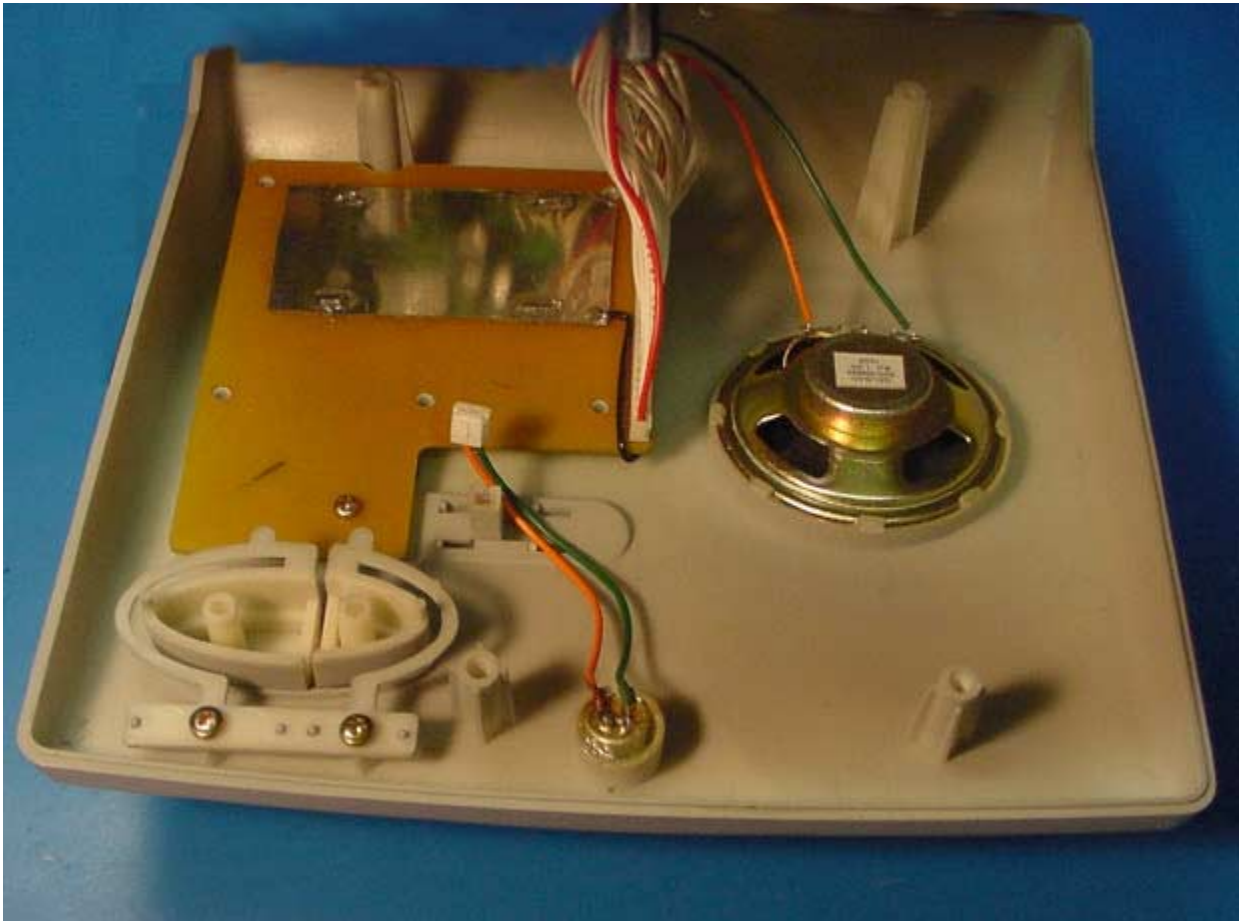
360 Herndon Parkway
Suite 1400
Herndon, VA 20170
<http://www.rheintech.com>



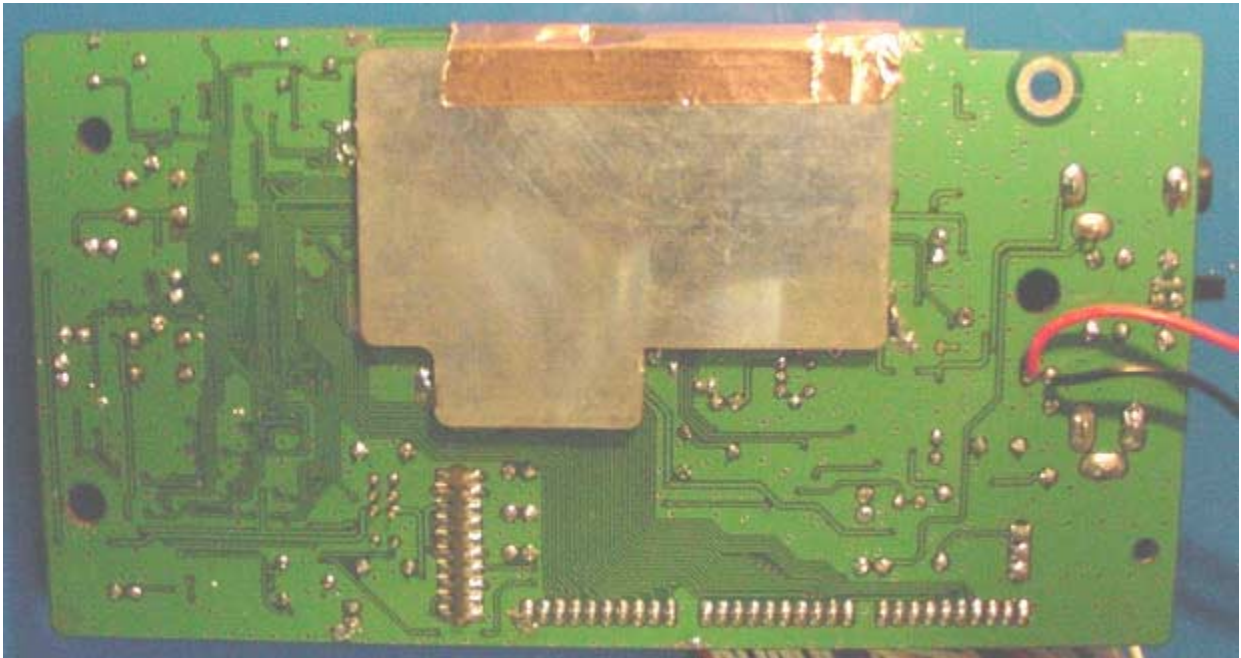
Bottom of LCD PCB



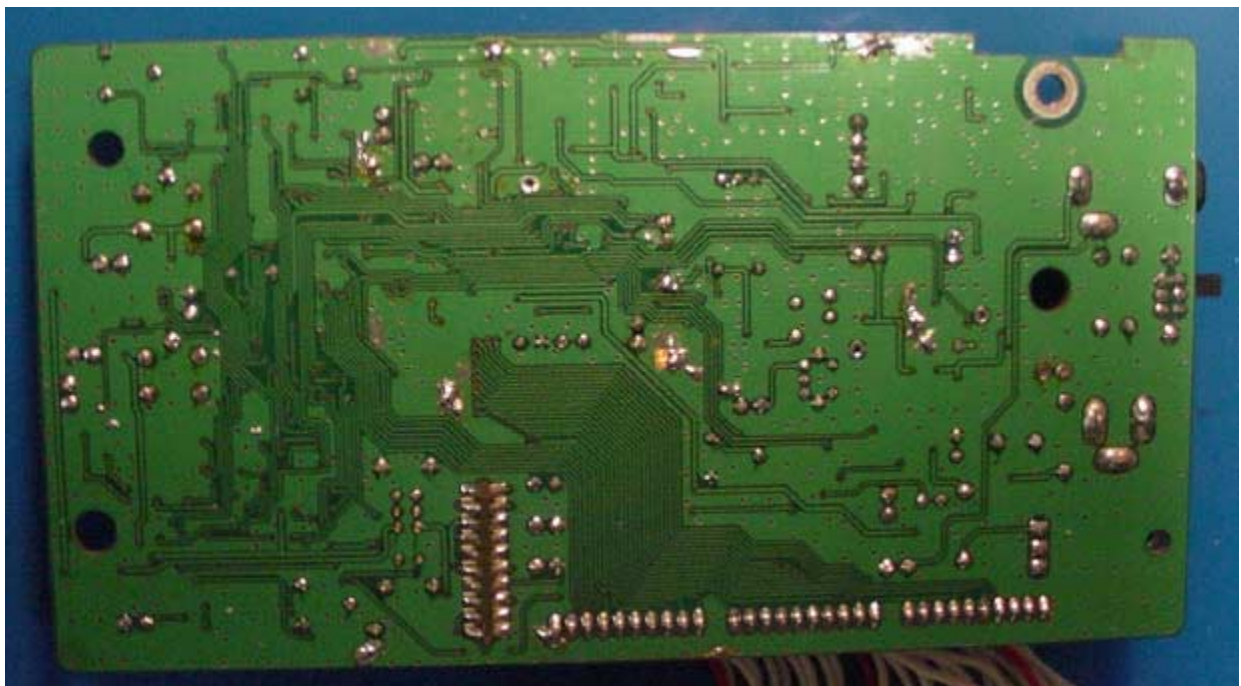
360 Herndon Parkway
Suite 1400
Herndon, VA 20170
<http://www.rheintech.com>



LCD PCB in top of case.



bottom of main PCB



Bottom of PCB with shields removed



360 Herndon Parkway
Suite 1400
Herndon, VA 20170
<http://www.rheintech.com>



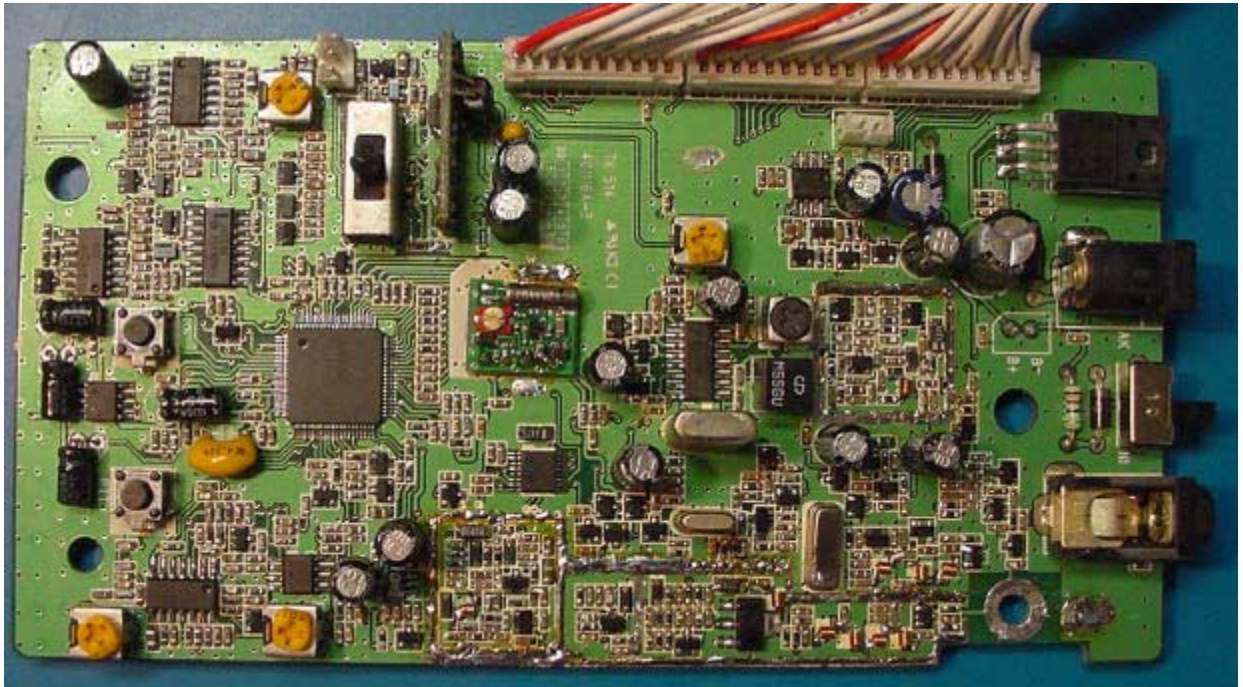
Inside bottom of case with main PCB



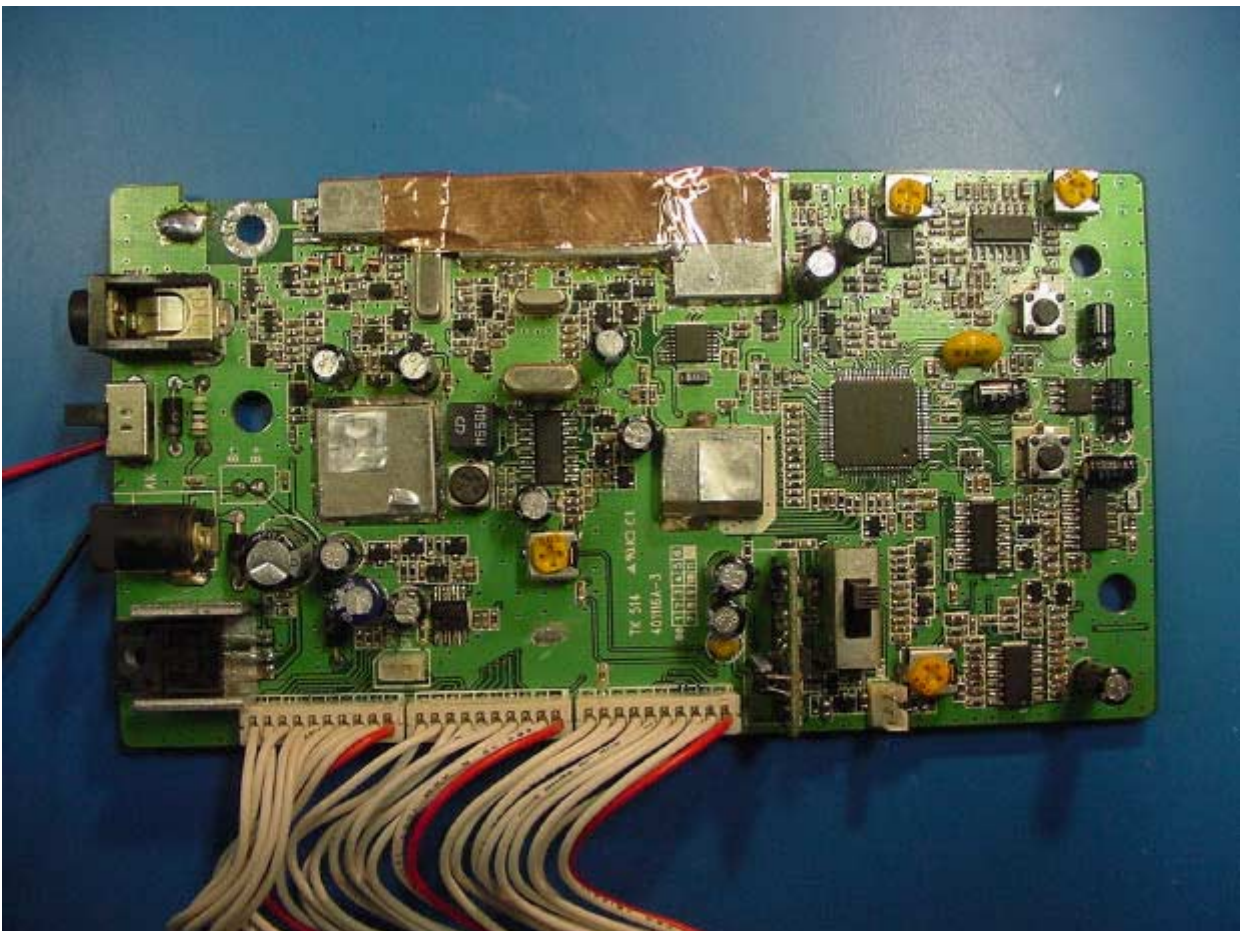
360 Herndon Parkway
Suite 1400
Herndon, VA 20170
<http://www.rheintech.com>



top of main PCB in case



top PCB with shields removed

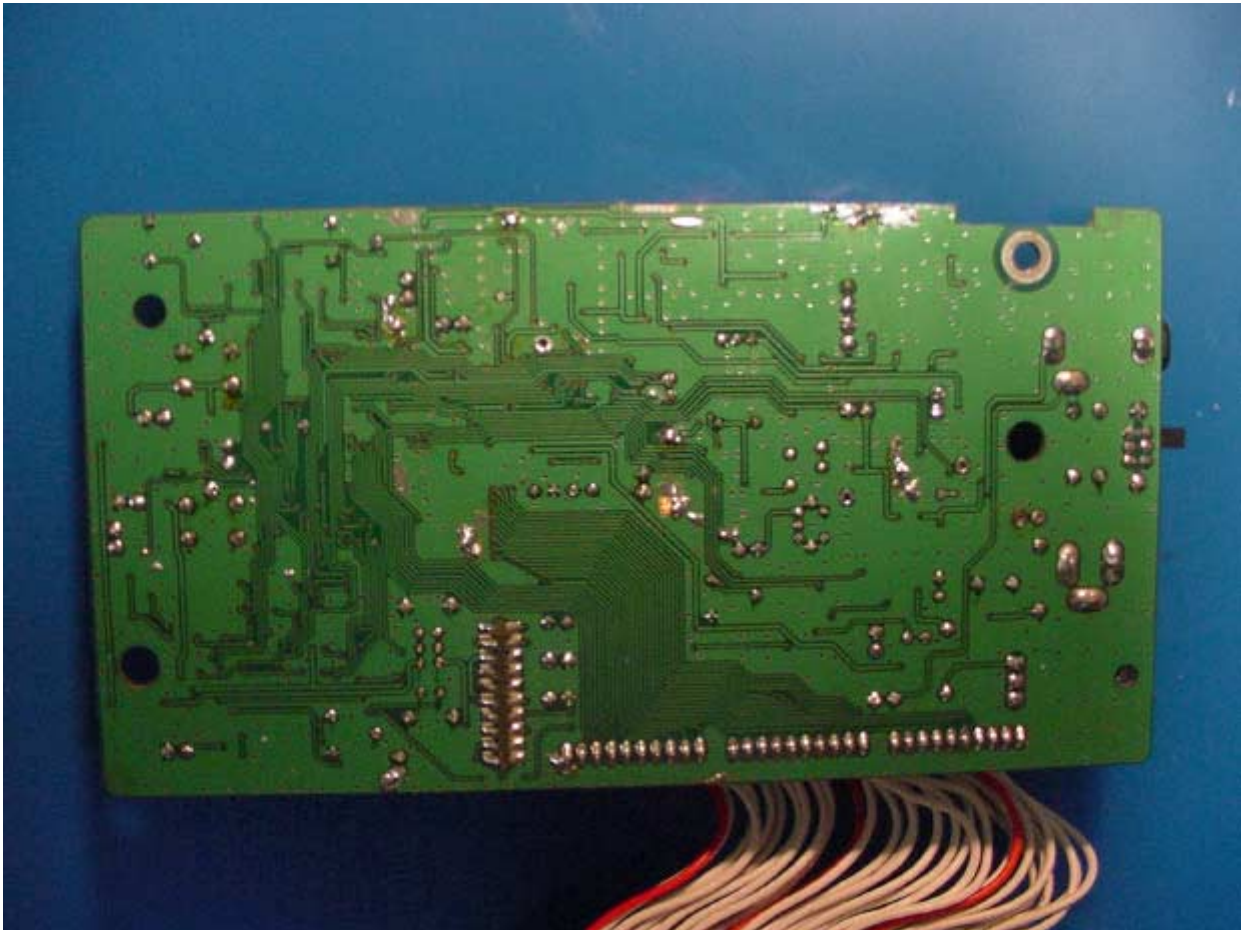




360 Herndon Parkway
Suite 1400
Herndon, VA 20170
<http://www.rheintech.com>

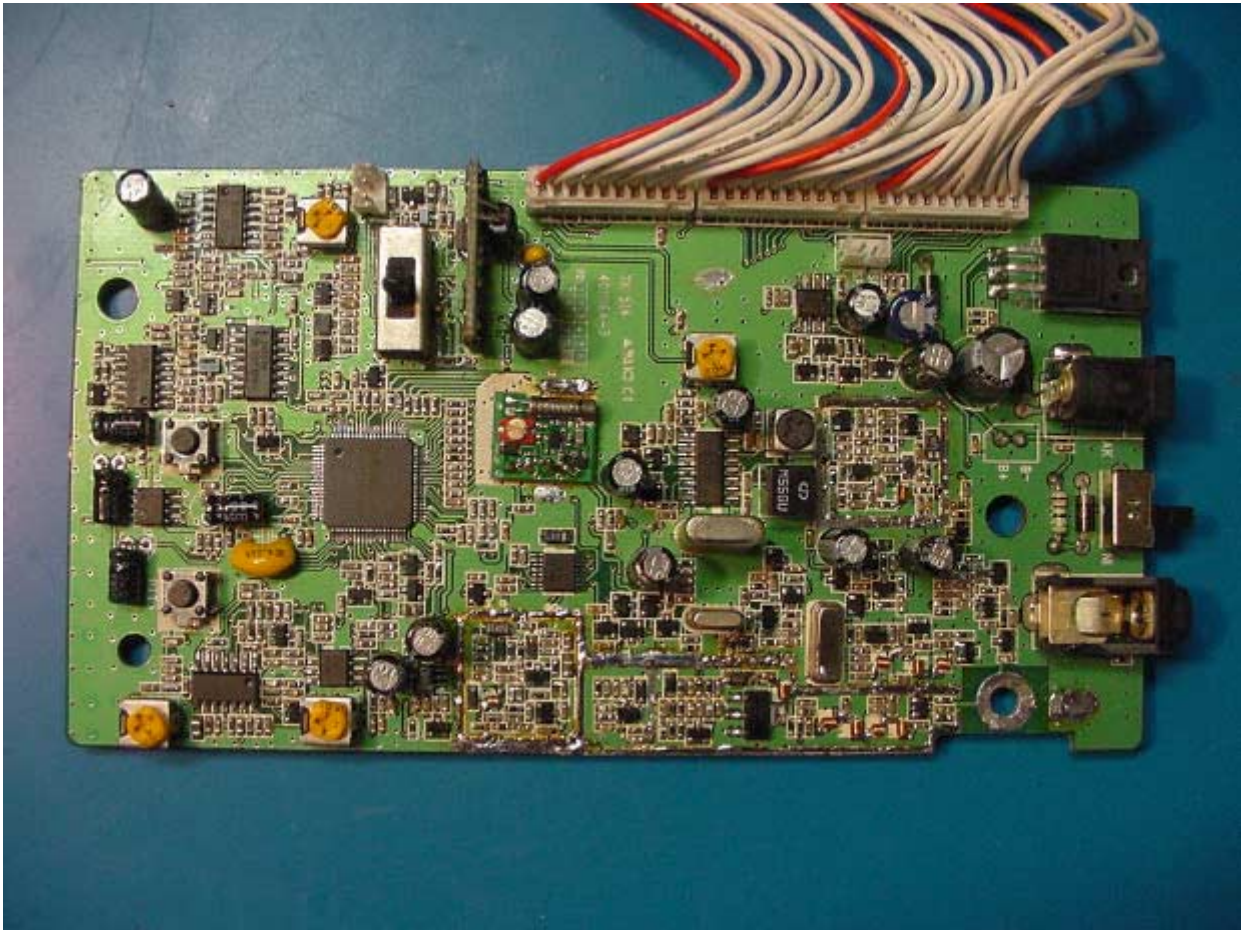


360 Herndon Parkway
Suite 1400
Herndon, VA 20170
<http://www.rheintech.com>





360 Herndon Parkway
Suite 1400
Herndon, VA 20170
<http://www.rheintech.com>





360 Herndon Parkway
Suite 1400
Herndon, VA 20170
<http://www.rheintech.com>

