



GST Bluetooth Headset - GL2BHS82

CONTENTS

1. Product General Information-----	1
1.1 Production Description -----	1
2. Product General Specifications -----	1
2.1 General specifications -----	1
2.2 Function Button/Indicators -----	2
3. Regulation Compliance-----	3
4. Environment Requirement-----	3
4.1 Drop and Vibration-----	3
4.1.1 Anti-Static Voltage-----	3
4.1.2 Vibration Test-----	3
4.1.3 Package Drop Test-----	3
4.2 Usage Condition-----	3
4.2.1 Temperature Range-----	3
4.2.2 Temperature-----	4
4.2.3 Humidity-----	4
5. Getting Started-----	4
5.1 Charging -----	4
5.2 Compatible chargers-----	4
6. Instructions -----	5
6.1 To turn the headset on-----	5
6.2 To turn the headset off-----	5
6.3 Pairing the headset-----	5
6.3.1 Pairing (Dual Pairing) -----	6
6.3.2 Resetting the headset to another device-----	6
6.3.3 Switching the headset from a paired device to the other-----	7
6.4 Answering incoming calls-----	7
6.5 Speaker Volume Control-----	7
6.6 End a call-----	7
7. Examples -----	8
7.1 Computer connect to headset-----	8

1. Product General Information

1.1 Product Description

GL2BHS80 is a wireless portable headset which enable to answer incoming calls wirelessly from a Bluetooth devices that support Headset profile, Audio Gateway role, such as GST voice/data access point, Bluetooth mobile phone in proximity.

2. Product General

2.1 General Specifications

Product Name	Bluetooth Headset GL2BHS80
Product Category	End-user portable product
Bluetooth specification	Bluetooth 1.1 compliant
Qualification /list date	Q1 2003
Support Profile	GAP, SPP, Headset (Headset role only)
Power Class	Class 2
Support packet types	HV1/HV3
Support hopping mode	USA/EU (79 channel)
Interoperability	All devices that support the Bluetooth Headset profile, Audio Gateway role. Example: GST Bluetooth voice/data Access Point, Bluetooth enable cell phone, smart phone.
Sensitivity	<-80dBm@0.1%BER
Output Power	-6 ~ +4dBm
Frequency range	2400-2483.5MHz
Size	
Total Weight	
Base color	Light Gray
Talk Time	3.5hrs
Standby time	100hrs
Packaging	Giftbox
Compatibility	Sony EricssonT39, T68, T68i, R520, P800 Nokia 6310, 6310i, 8910 Motorola T270 Philips 820
Rechargeable battery	150mA
Power Adapter	DC 5V adapter

2.2 Function button/ indicators

Symbol	Functions
Call handling button()	Handle calling function; answer a phone call forwarded from Bluetooth Audio Gateway device; Power on/off
Volume Up button	Adjust volume up, pairing, switch connecting device
Volume Down button	Adjust volume down, pairing, switch connecting device
Function LED	RED slow flashing during battery low RED fast flashing during waiting pairing GREEN flashing during standby LED off during power off mode
Charging LED	RED during charging. Light off when the battery is fully charged
Speaker	
Microphone	
Rechargeable connector	





3. REGULATION COMPLIANCE

Compliant with

FCC Part 15 Class B, (To be confirmed)

ETS 300 328, ETS300 826 (To be confirmed)

Bluetooth Test Specification v1.1 compliant. (To be confirmed)

4. ENVIRONMENT REQUIREMENT

4.1 Drop and Vibration

4.1.1 Anti-Static Voltage

Static voltage tests by 4KV in body should not cause system fail.

4.1.2 Vibration Test

The vibration test is under the Frequency and amplitude 10~25 1mm in vertical and horizontal direction by 30 minutes that should not cause any damage on product.

4.1.3 Package Drop Test

Dropping the package from the height of 50cm for each of the six(6) faces onto the hard-wood floor will not cause any product damage.

4.2 Usage Condition

4.2.1 Temperature Range

Operating -0 °C ~ +55°C

Storage -20 °C ~ +70°C

4.2.2 Temperature Shock

The one cycle of reliability test is keeping -20 °C for 2 hours, switching temperature up to +60 °C within one hour, and testing at +60 °C by 2 hours, and switching temperature to -20 °C within one hour. Three cycle should be tested and without any product fail.

4.2.3 Humidity

Operating	0% to 70%
Storage	0% to 95% Non-condensing

5. Getting Started

Before you start using the headset with a Bluetooth enabled phone or other devices for the first time, you should:

- Charge the battery using the enclosed GST 5V charging adapter
- Pair the headset with a device (Audio Gateway role), such as Bluetooth enabled cell phone, Access Point.

5.1 Charging

The GL2BHS80 build in a rechargeable battery. The battery is not fully charged when you buy the headset. Before using the headset in the very first time, please charge the battery until the charging indicator (RED LED) light off.

- If charging indicator turns red, this remind you that you need to recharge the battery.
- It takes 2.5 to 3 hours to fully recharge the battery.
- During charging, the charging LED light shows a steady red light if the battery is not fully charged; After battery is fully charged, charging LED light off.
- When battery is fully charged; Function LED turns off if headset is off; Function LED light flashes green if headset is on.
- When the battery is fully charged, if the Function LED light flashes red in a very short time, this means the battery is about end of life. Please purchase a new GST rechargeable battery to replace.

5.2 Compatible chargers

- Standard 5V charger (standard pack)
- Traveler 5V charger (optional pack)
- Cigar-lighter charger (optional pack)

6. INSTRUCTIONS

GL2BHS80 Headset has dual pairing function (patent protected). Dual pairing functions means that the headset is able to listen to incoming calls from 2 different cell phones. This user guide will instruct you how to set up a dual-paired function, switch connections and answer phone call from different devices.

6.1 To turn the headset on

- Press and hold the call handling button () around 1second until Function LED flashes green.
- Then Function LED flashes GREEN every 5 seconds, this means the headset has been turned on and you are ready to answer incoming calls.
- If Function LED flashes RED every 7 seconds, this means low battery, please recharge the battery.
- If Function LED flashes RED every 3 seconds, this means the headset have not be paired yet, you need to pair the headset with audio gateway device first.
- If Function LED flashes GREEN every 5 seconds, this means the headset automatically connect with the paired devices and ready to answer incoming calls.

6.2 To turn the headset off

- Press and hold the call handling button () around 7 seconds until you hear a long beep tune and Function LED lights off. This means the headset is turned off, and you are unable to answer any call.

6.3 Pairing the headset

Before you can use the headset, you must pair it with the audio gateway devices (such as mobile phone) you want to use it with. Once you have paired the headset with the audio gateway device, you do not need to pair again until you want to use this headset with another phone.

The headset will automatically register the audio gateway device into memory, you do not need to pair again even the headset is turned of and turned on next time.

Dual-pairing functions

The GST headset is enable for dual-pairing, which means that your headset can be paired with 2 different devices, for example, one mobile phone, and one GST voice/data Access Point. After the headset has been paired successfully, the headset will manual switch connection from one device to the other.

6.3.1 Pairing

1. The headset uses volume up button and volume down button to accept pairing requests from 2 different devices.
2. After you turn the headset on, the Function LED flashes RED every 3 seconds, this means the headset is ready for pairing and you may start pairing procedure directly. Function LED will flashed RED until the headset has been paired or turned off.
3. Volume down button is default set as a paired key.
4. Continue according to the instructions in the pairing devices' user documentation. The headset passkey is 0000.
5. When pairing success, Function LED flashes GREEN every 5 seconds. If Function LED flashes RED every 3 seconds, means pairing failed. You need to re-pairing again.
6. If you want to have your headset to be paired with 2nd device. Press and hold the volume up button 7 seconds until you hear 2 long beep tune and headset is turn off. Press call handling button () around 1 second, the headset is turned on again, then you will see the Function LED flashes RED every 3 seconds, the headset is now ready to be paired with another device. The pairing procedure is same as the first pairing procedure.

6.3.2 Resetting the headset to be paired to another audio gateway device

You may want to reset the headset to be paired with from one audio gateway device to the other.

- With the headset turned on, press and hold Volume Up button (or volume down button) around 7 seconds, until you hear 2 long beep tune, the headset will be turn off. Then press call handling button () around 1 second to restart the headset. When Function LED flashes every 3 seconds, means the headset already clear pairing. Then you can pair the new device again.

6.3.3 Switching the headset from a paired device to the other

The headset can only receive an incoming call from only one device at a time, no matter one or two devices it is paired with. However, you can set up the priority of receiving 2 devices' incoming calls.

- If the headset has been paired with 2 devices, you need to remember which device you paired with by volume up button, and the other by volume down button. The headset use volume up and volume down buttons to manage 2 pairing devices.
- Select the high priority pairing device you prefer, and press the volume up or volume down button (depend on the button when you set up pairing devices) around 2 seconds, until you hear a long beep tune, release the button, then Function LED will fresh GREEN every 5 seconds. This means the headset has been switched to the 1st priority pairing device and auto connected.
- If the headset is only paired with one device, even though you press volume up or volume down button try to switch the priority, the headset still remain the only paired device as 1st priority.
- The priority setting will remain internally of the headset and keep the setting until you try to clear pairings or reset priority again. It won't lose priority setting when you turn off the headset.

6.4 Answering incoming calls

When a call is forwarded from a pairing device to the headset, the headset rings as well. Press any button to answer a call.

6.5 Speaker Volume control

- Press “+” to volume up
- Press “-“ to volume down

6.6 End a call

After you finish a call, press call handling button () to finish a call. You need always to press call handling button () to release a call, otherwise, the headset will remain the connection with the pairing device.

7. Examples

Bluetooth Headset 應用範例

7.1 Computer connect to headset

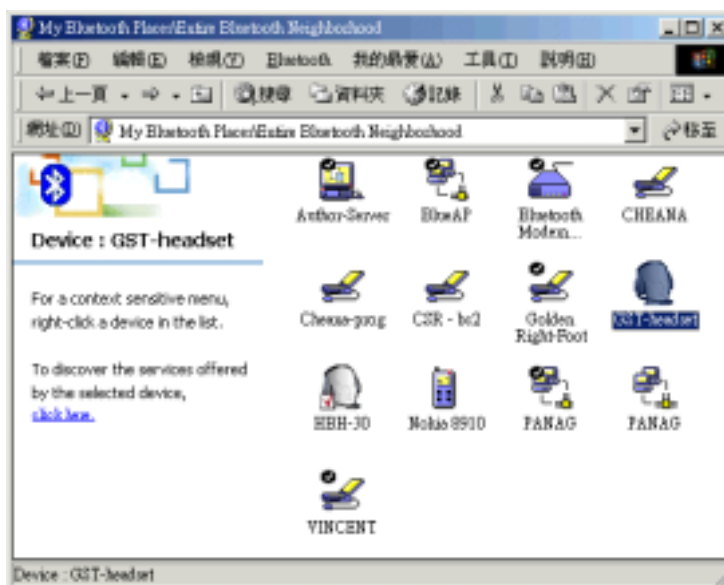
- Install Widcomm 1.3.2.7, insert the CD we provide, and follow the installation wizard to complete the installation process.
- Set up the Bluetooth Headset into pairing mode, press Volume up or Volume down button for 5 seconds until Function LED turn off. The press Take key for 3 seconds until LED flashes RED, then you may start Pairing procedure.
- Double click My Bluetooth Places Icon



- Double click Entire Bluetooth Neighborhood



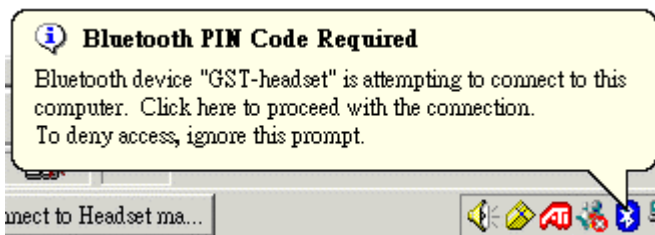
- Double click GST-headset Icon



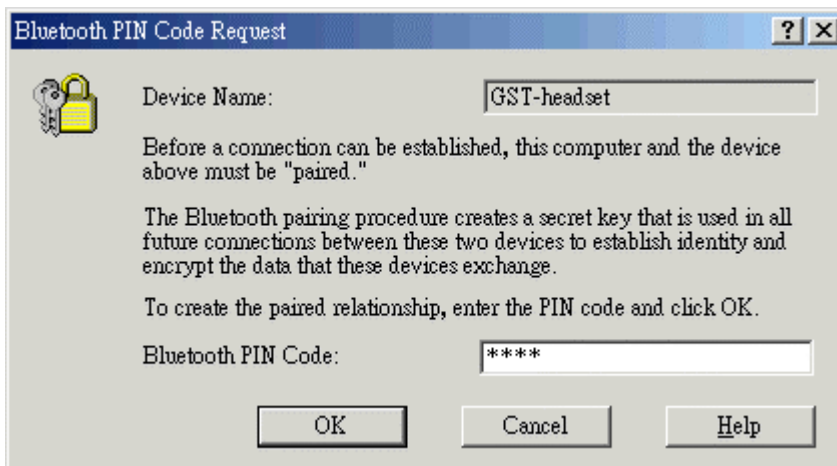
- Double click Headset on GST-headset Icon



- Click Bluetooth Icon



- Enter Ping Code ("0000" default setting) -> press OK button



- After click OK button, you will hear a beep tune from Headset, press any key on Headset to accept the connection request. After connection has been established, all of the voice from audio data (such as MP3 files) will be forwarded from computer to Bluetooth Headset.

7.2 T68 connect to Bluetooth Headset

- Set up the Bluetooth Headset into pairing mode, press Volume up or Volume down button for 5 seconds until Function LED turn off. Then press Take key for 3 seconds until LED flashes RED, then you may start Pairing procedure.
- Enter T68 manual, select ->Connect
- Select →Bluetooth
- Select →Discover
- Select → GST-Headset
- Enter "PIN Code" (Default setting "0000")
- Save pairing headset
- When a phone call coming, press any button to answer the call via Bluetooth Headset
- Press Talk button to end a call.

FCC Notices

This device complies with part 15 of the FCC rules. Operation is subject to the following two conditions:

- (1) This device may not cause harmful interference, and
- (2) This device must accept any interference received, including interference that may cause undesired operation .

“FCC RF Exposure requirements:

This device and its antenna(s) must not be co-located or operation in conjunction With any other antenna or transmitter.”

NOTE: THE MANUFACTURER IS NOT RESPONSIBLE FOR ANY RADIO OR TV INTERFERENCE CAUSED BY UNAUTHORIZED MODIFICATIONS TO THIS EQUIPMENT. SUCH MODIFICATIONS COULD VOID THE USER'S AUTHORITY TO OPERATE THE EQUIPMENT.