

54Mbps Wireless Network

Mini PCI Adapter

USER'S MANUAL

Model Name:	GL2554MP-1A
Version:	1.0
Date:	15/10/03

Please make sure TURN OFF your computer and remove the power cord from your PC. Open the computer case and then please insert the 54Mbps Wireless mini PCI Adapter. Once the 54Mbps Wireless mini PCI Adapter is installed, place the computer case back. Turn ON your computer.

Driver Installation

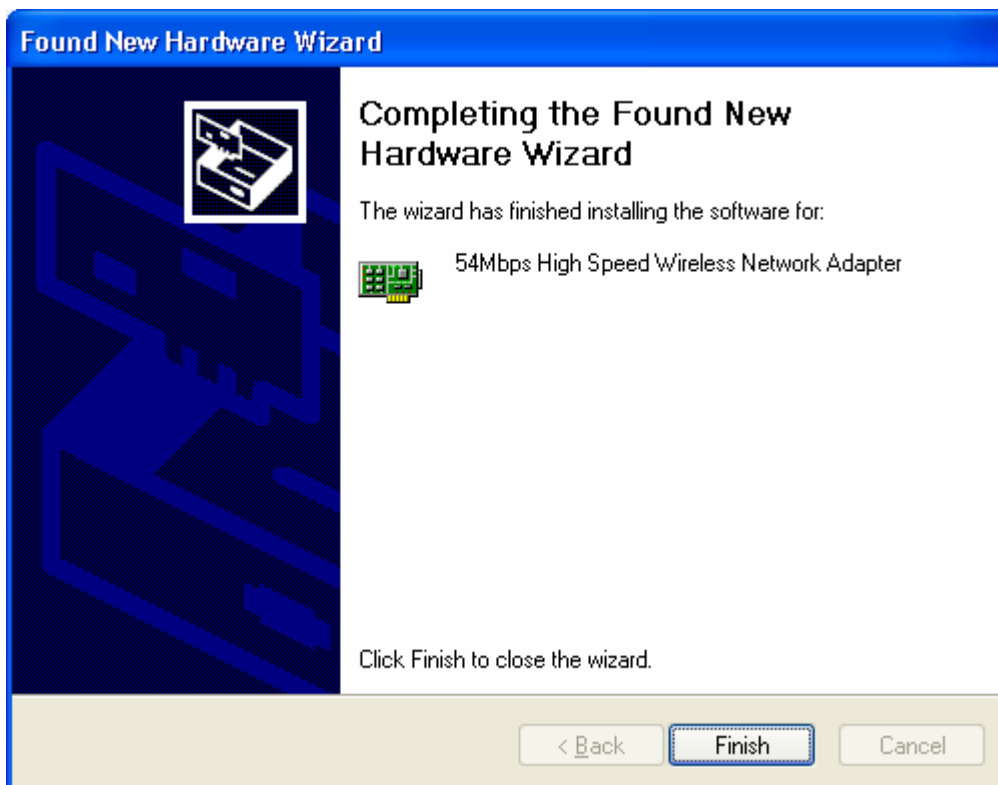
1. Please select the second option and click “Next”.



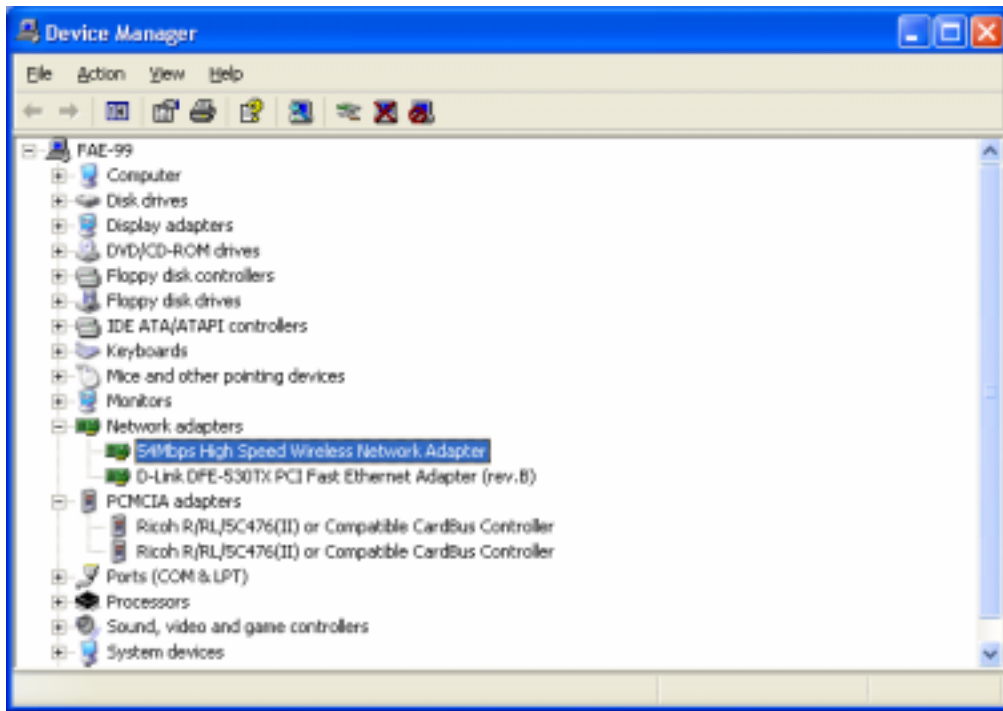
2. Please click “Continue Anyway”



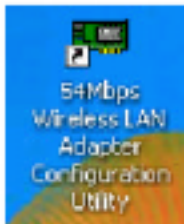
3. Please click "Finish"



4. To make sure if the installation is successful, you could check it through the device management.



5. Once the installation is successful, a utility program icon will show on your desktop. To launch the utility, just double click the icon.



Federal Communication Commission Interference Statement

This equipment has been tested and found to comply with the limits for a Class B digital device, pursuant to Part 15 of the FCC Rules. These limits are designed to provide reasonable protection against harmful interference in a residential installation. This equipment generates, uses and can radiate radio frequency energy and, if not installed and used in accordance with the instructions, may cause harmful interference to radio communications. However, there is no guarantee that interference will not occur in a particular installation. If this equipment does cause harmful interference to radio or television reception, which can be determined by turning the equipment off and on, the user is encouraged to try to correct the interference by one of the following measures:

- Reorient or relocate the receiving antenna.
- Increase the separation between the equipment and receiver.
- Connect the equipment into an outlet on a circuit different from that to which the receiver is connected.
- Consult the dealer or an experienced radio/TV technician for help.

This device complies with Part 15 of the FCC Rules. Operation is subject to the following two conditions: (1) This device may not cause harmful interference, and (2) this device must accept any interference received, including interference that may cause undesired operation.

FCC Caution: Any changes or modifications not expressly approved by the party responsible for compliance could void the user's authority to operate this equipment.

IMPORTANT NOTE:

FCC Radiation Exposure Statement:

This equipment complies with FCC radiation exposure limits set forth for an uncontrolled environment. This equipment should be installed and operated with minimum distance 20cm between the radiator & your body.

This device is intended only for OEM integrators under the following conditions:

- 1) The antenna must be installed such that 20 cm is maintained between the antenna and users, and
- 2) The antenna should be integral if the end device is intended to be operated in 5.15 ~ 5.25GHz frequency range.

As long as 2 conditions above are met, further transmitter test will not be required. However, the OEM integrator is still responsible for testing their end-product for any additional compliance requirements required with this module installed (for example: Notebook, Wireless Access Point ,Wireless Router, etc.).

IMPORTANT NOTE: In the event that these conditions can not be met (for example certain laptop configurations or co-location with another transmitter), then the FCC authorization is no longer considered valid and the FCC ID can not be used on the final product. In these circumstances, the OEM integrator will be responsible for re-evaluating the end product (including the transmitter) and obtaining a separate FCC authorization.

End Product Labeling

This transmitter module is authorized only for use in device where the antenna may be installed such that 20 cm may be maintained between the antenna and users. The final end product must be labeled in a visible area with the following: “**Contains TX FCC ID:O7J-GL2554MP-1A**”.

Manual Information That Must be Included

The OEM integrator has to be aware not to provide information to the end user regarding how to install or remove this RF module in the users manual of the end product which integrate this module.

The users manual for OEM integrators end users must include the following information in a prominent location “ **IMPORTANT NOTE: To comply with FCC RF exposure compliance requirements, the antenna used for this transmitter must be installed to provide a separation distance of at least 20 cm from all persons and must not be co-located or operating in conjunction with any other antenna or transmitter**”.

If the end product integrating this module is going to be operated in 5.15 ~ 5.25GHz frequency range, the warning statement in the user manual of the end product should include the restriction of operating this device in indoor could void the user’s authority to operate the equipment.

Global Sun Technology Inc.

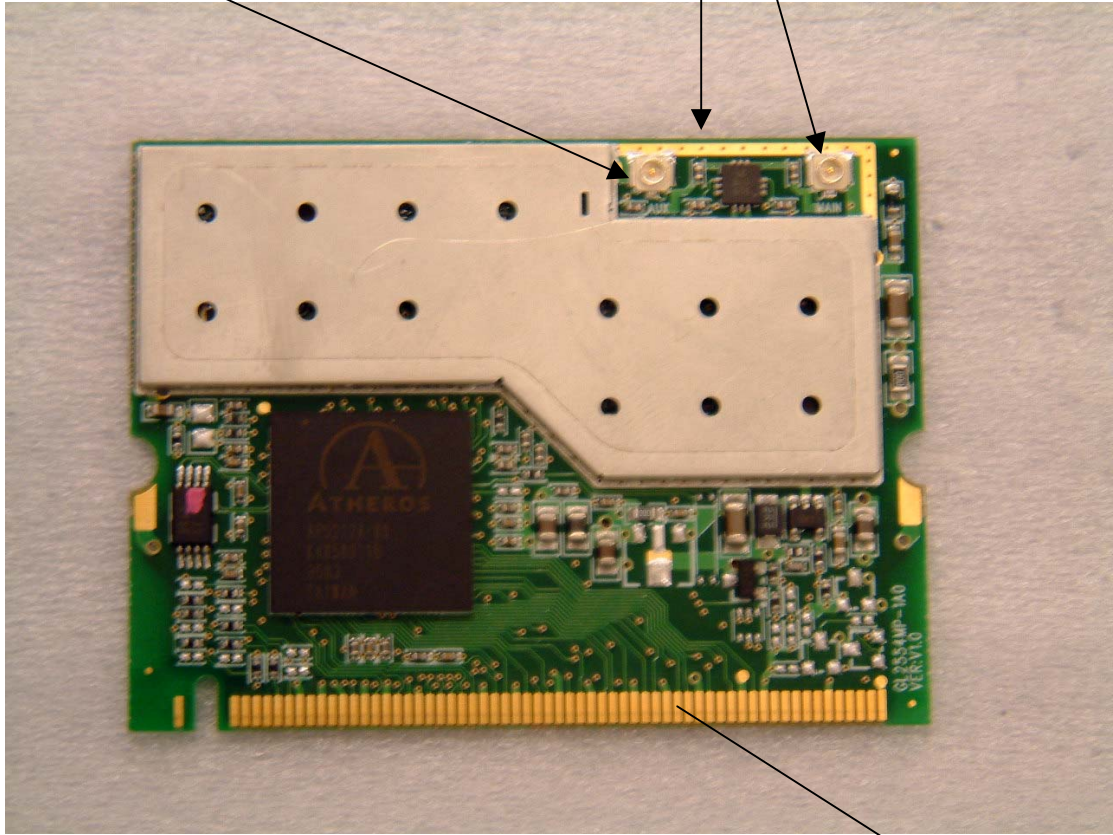


Installation Manual for Mini PCI Card

Step 1 Take the Mini PCI card
connector for aux antenna

connector for Main antenna

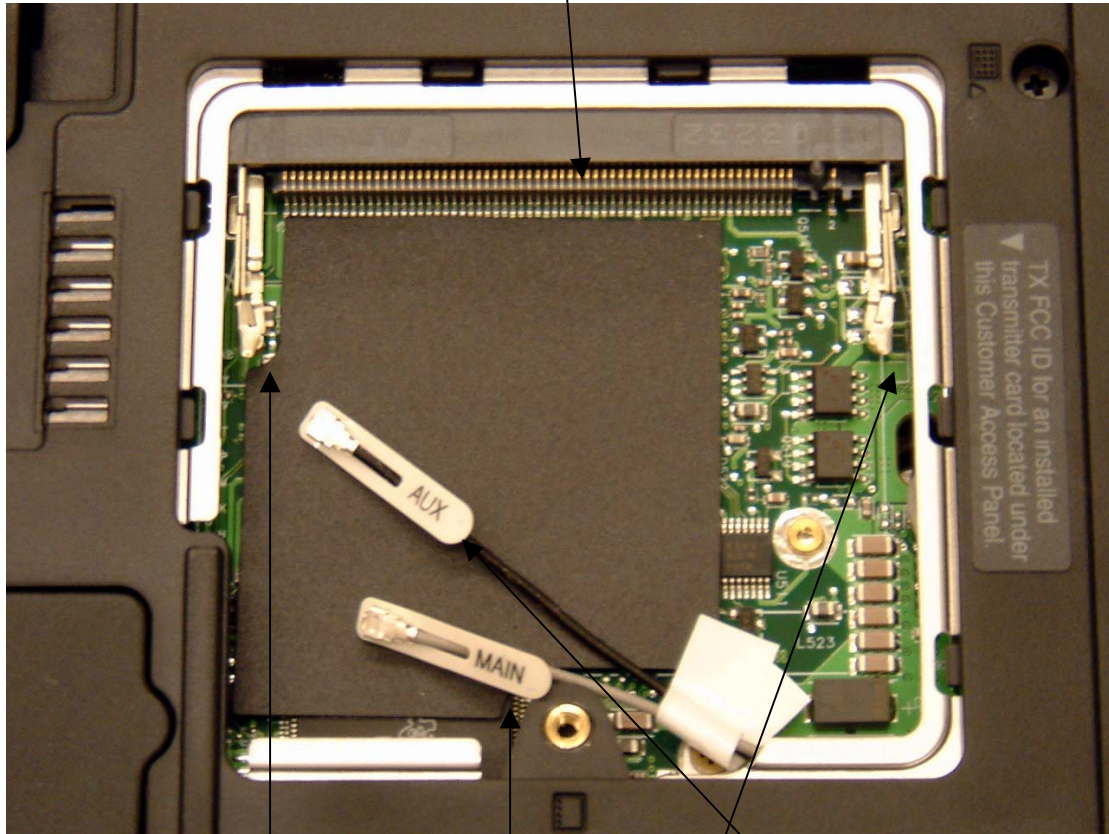
top



bottom

Card Slot

connecting with the bottom of the Mini PCI Card



Left Clip

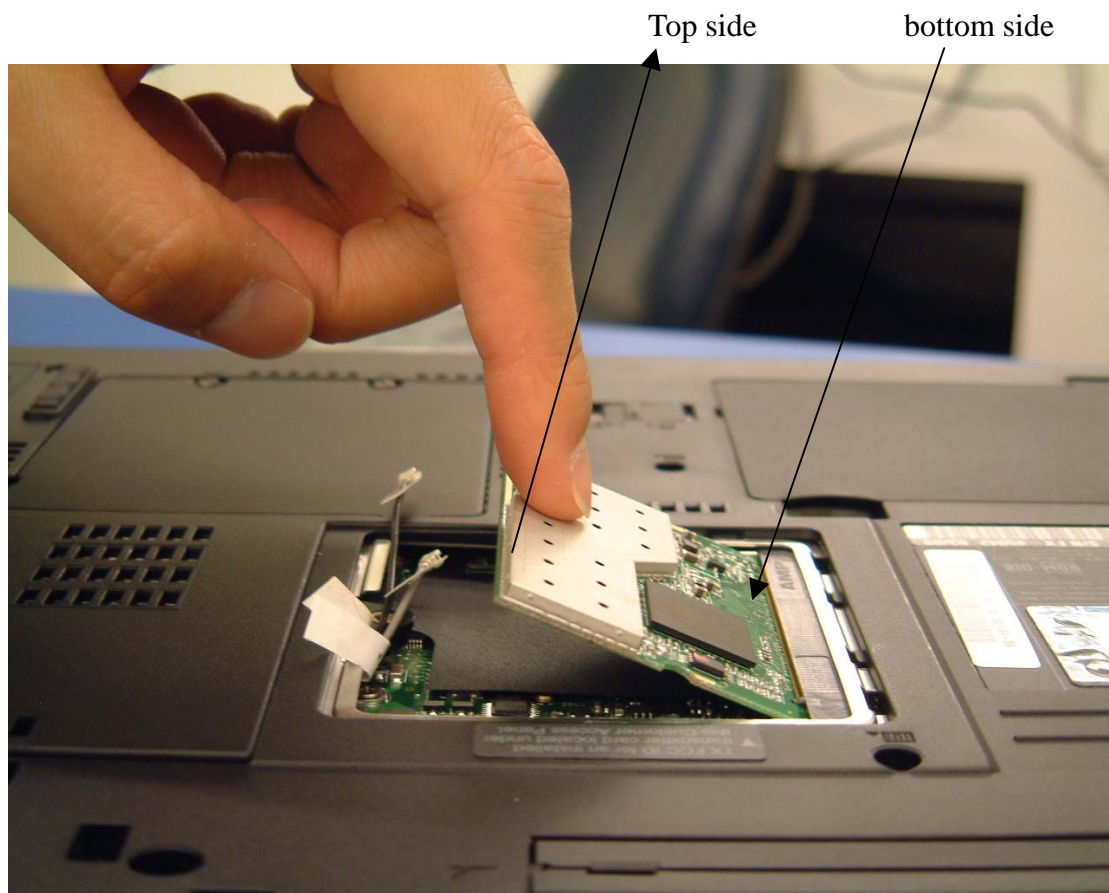
Main Antennae

Right clip

Aux Antennae

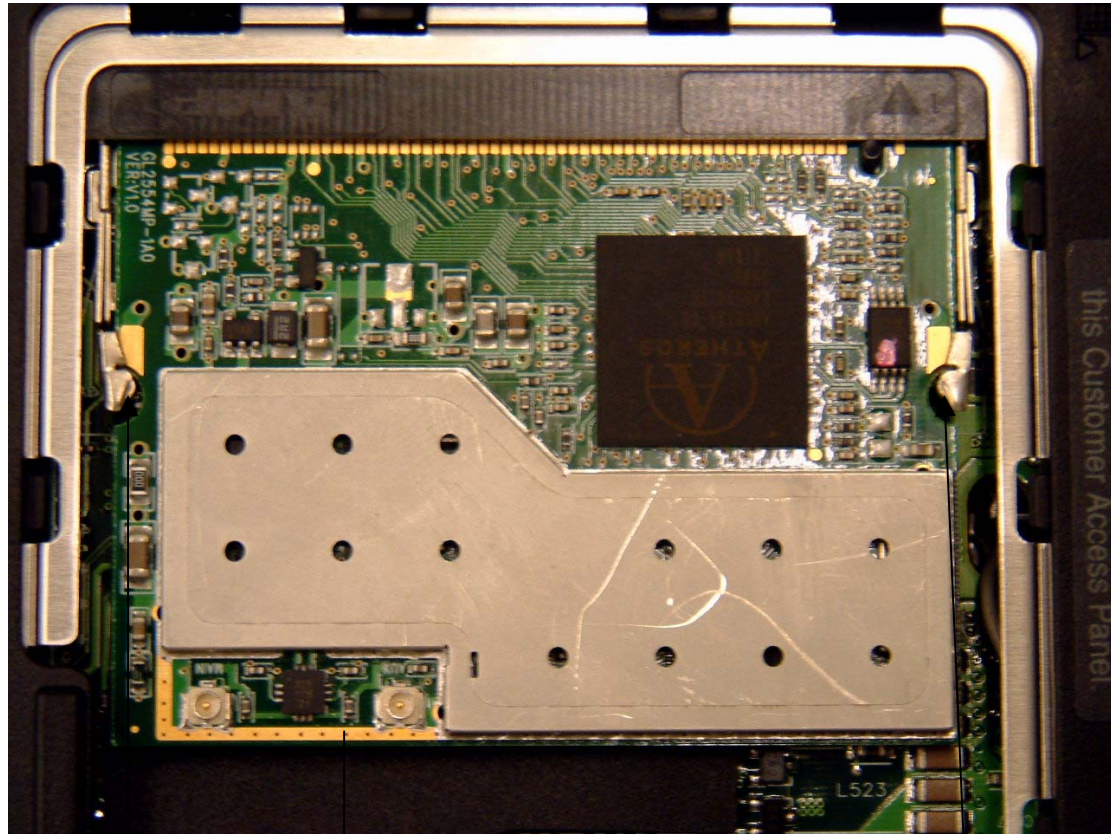
Step 2

Insert the Mini PCI card into the card slot with downside toward the slot



Step 3

Press down the top upperside of the card downward. A click sound made by the clippers on both left and right side of the slot signals that the card is firmly inserted to its position



Left Clip

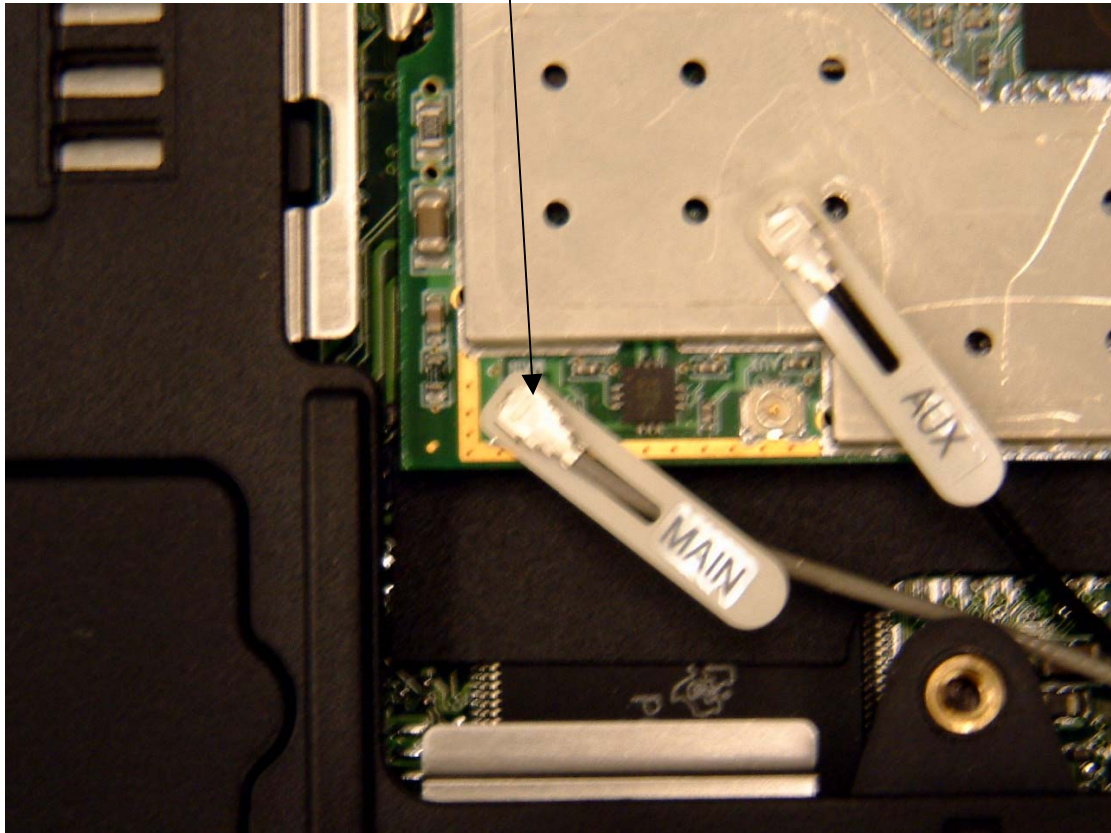
top side

Right Clip

Step 4.

Connecting the main antenna to the main connector.

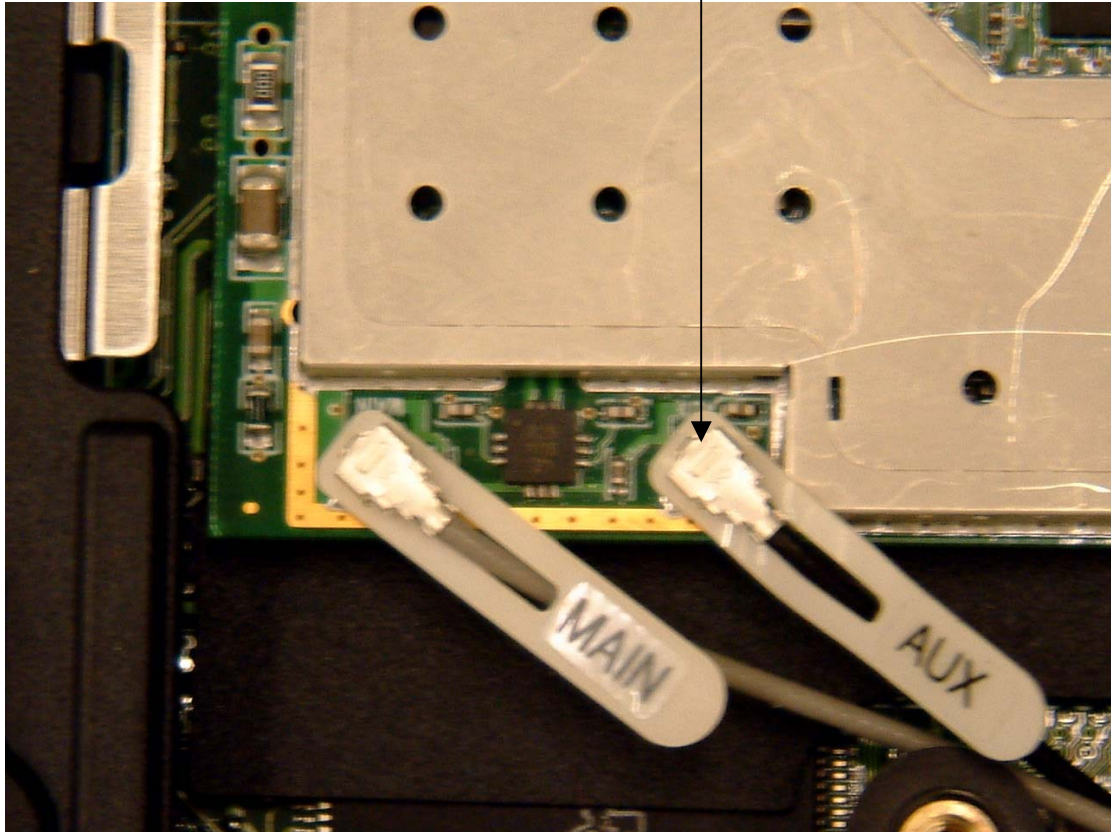
Connector for the main antenna



Step 5

Connecting aux antennae to the aux connector. When both antennae are connected to the connectors as the picture shown below, the Mini PCI Card installation is completed.

Aux connector



Notification on Antennae

Please be notice that the antennae must be firmly located inside the TFT-LCD panel. According to FCC regulation, to ensure the antenna will be kept at 20 cm away from users, the tip of the antennae must be firmly installed inside the top part of the TFT-LCD panel !