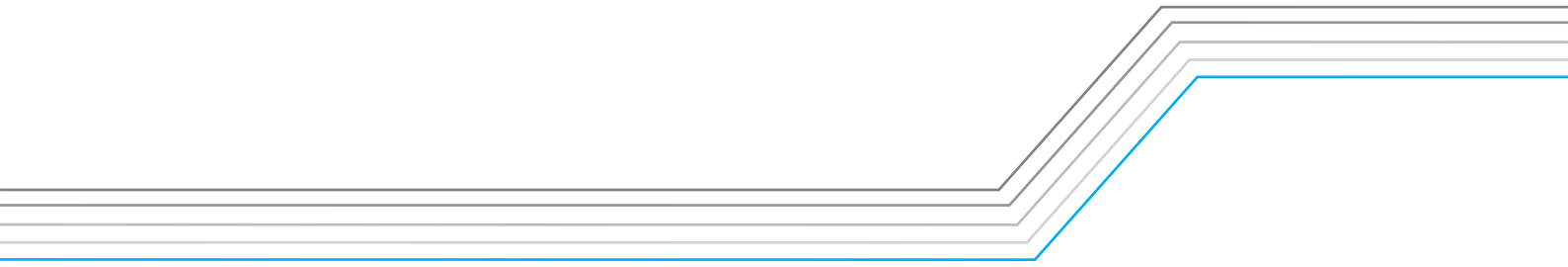


Quick Start Guide

Spectrum100-H/
Spectrum200-H



Notice




Notice

Please read this quick start guide carefully to be able to safely install, use and maintain the product at maximum performance. Keep this quick start guide next to your product for future reference. The information in this quick start guide is subject to change without notice.

Copyright

Not to be copied, used or translated in part or whole without Time Warner Cable's prior consent in writing except approval of ownership of copyright and copyright law.

Meaning of Symbols

	To reduce the risk of electric shock, do not remove cover (or back). No user serviceable parts inside. Refer servicing to qualified service personnel.
	This symbol indicates dangerous voltage inside the product that presents a risk of electric shock or personal injury.
	This symbol indicates important instructions accompanying the product.

Warnings, Cautions and Notes

Throughout the whole manual, pay special attention to the following marks that indicate hazardous situations.

Warning

Indicates a hazardous situation which could result in serious injury

Caution

Indicates a situation which could damage the equipment or other apparatus

Note

Indicates additional information to make the user aware of possible problems and information of any importance to help understand, use and maintain the installation.

Warranty

The warranty does not cover parts which may become defective due to misuse of the information contained in this manual.

'WEEE' Instructions

This product should not be disposed with other household wastes at the end of its working life. Please separate this from other types of wastes and recycle it responsibly to promote the sustainable reuse of material resources. This will prevent possible harm to the environment or human health from uncontrolled waste disposal.



Domestic users:

Please contact either the retailer where you purchased this product or their local government office for details of where and how they can take this item for environmentally safe recycling.

Business users:

Contact your supplier and check the terms and conditions of the purchase contract. This product should not be mixed with other commercial wastes for disposal.

Trademarks

Manufactured under license from Dolby Laboratories.
 Dolby and the double-D symbol are trademarks of Dolby Laboratories.
 HDMI, the HDMI Logo, and High-Definition Multimedia interface are trademarks and registered trademarks of HDMI Licensing LLC.

This item incorporates copy protection technology that is protected by U.S. patents and other intellectual property rights of Rovi Corporation. Reverse engineering and disassembly are prohibited.

For Your Safety

Safety Instructions

1. POWER SUPPLY

- Operate this product only from the type of power supply shown on the marking label. If you do not know the type of power supplied to your home, contact your local power company.
- Disconnect the power supply before you start any maintenance or installation procedures.

2. OVERLOADING

- Make sure that the wall outlet, extension cord and adapter have a sufficient power rating for the appliance. If not, this can cause an electric fire shock.

3. LIQUID

- Do not expose this product to liquids. Do not put objects filled with liquid on the product.

4. CLEANING

- Disconnect the product from the wall outlet before you clean it.
- Use a moist cloth to clean the product. Do not use solvents. Wipe the surface gently with a soft cloth as it may get scratched.

5. VENTILATION

- Make sure that the slots on top of the product are not blocked. It is necessary to have a sufficient airflow into the unit.
- Do not put electronic equipment on the product.
- Do not put objects on the product. This will block the ventilation or cause damage to the surface.

6. ATTACHMENTS

- Do not use any unsupported attachments as these may be hazardous or cause damage to the product.

7. LIGHTNING, STORM OR NOT IN USE

- Unplug the product from the wall outlet and disconnect the antenna during a thunderstorm or when left unattended and unused for long periods of time. This will prevent damage to the unit due to lightning and power-surges.

8. EXTRANEIOUS OBJECTS

- Do not insert anything through the openings in the unit, where they can touch dangerous voltage points or damage parts.

9. REPLACEMENT OF PARTS

- When replacement of parts is required, be sure the service technician uses replacement parts specified by the manufacturer or those that have the same characteristics as the original part. Unauthorised substitution may result in additional damage to the unit.

10. CONNECTION TO THE SATELLITE DISH LNB/CABLE TV SIGNAL/AERIAL

- Disconnect the power supply before you connect or disconnect the cable from the satellite dish/cable TV signal/aerial. If not, this can cause damage to the LNB/cable TV line/aerial.

11. CONNECTION TO THE TV

- Disconnect the power supply before you connect or disconnect the cable from the TV. If not, this can cause damage to the TV.

12. EARTHING (satellite only)

- Earth the LNB cable to the system earth for the satellite dish.

13. LOCATION

- Place the product indoors to avoid exposure to lightning, rain or sun. Do not place it near a radiator or heat register.
- Keep at least 10 cm clearance from any other appliances susceptible to electromagnetic influences such as a TV or a VCR.
- If you place the product on a rack or a bookcase, make sure that there is adequate ventilation and that you have followed the manufacturer's instructions for mounting.
- Do not place the product on an unstable surface where it can fall. A falling product can cause serious injury to a personnel and serious damage to the appliance.

14. Environment

- Attention should be drawn to the environmental aspects of battery disposal.
- Care is required for the use of this apparatus in tropical and/or moderate climates.

Cautions and Warnings

1. To avoid damage of the power cord or plug

- Do not modify or process the power cord or plug arbitrarily.
- Do not bend or twist the power cord.
- Make sure to disconnect the power cord while you hold the plug.
- Keep heating appliances as far as possible from the power cord to prevent the cover vinyl from melting.
- The mains plug, as a disconnection device, shall remain readily accessible by the user.

2. To avoid electrical shock

- Do not open the main body.
- Do not insert metal or inflammable objects inside the product.
- Do not touch the power plug with wet hands.
- Disconnect the power cord in case of lightning.
- Unplug the power cable before you install the antenna cable.

3. To avoid damage of product

- Do not use the product when it is out of order. If you continue to use the product when defective, this may cause serious damage. Make sure to contact the customer service centre if the product is out of order.
- Do not insert metal or alien substance into the slots for the modules or Smartcards. It may cause damage to the product and reduce its life span.

4. To avoid damage of the hard disk drive (PVR only)

- Do not move the product or turn the power off suddenly while the hard disk drive is running.
- The company shall not be liable for any corruption of data on the hard disk drive caused by carelessness or misuse of the user.

Safety

Important Safety Instructions

1. Read these instruction.
2. Keep these instruction.
3. Heed all warnings.
4. Follow all instructions.
5. Do not use this apparatus near water
6. Clean only with dry cloth.
7. Do not block any ventilation openings. Install in accordance with the manufacturer's instructions.
8. Do not install near any heat sources such as radiators, heat registers, stoves, or other apparatus (including amplifiers) that produce heat.
9. Do not defeat the safety purpose of the polarized or grounding-type plug. A polarized plug has two blades with one wider than the other. A grounding type plug has two blades and a third grounding prong. The wide blade or the third prong are provided for your safety. If the provided plug does not fit into your outlet, consult an electrician for replacement of the obsolete outlet.
10. Protect the power cord from being walked on or pinched particularly at plugs, convenience receptacles, and the point where they exit from the apparatus.
11. Only use attachments/accessories specified by the manufacturer.
12. Use only with the cart, stand, tripod, bracket, or table specified by the manufacturer, or sold with the apparatus. When a cart is used, use caution when moving the cart/apparatus combination to avoid injury from tip-over.
13. Unplug this apparatus during lightning storms or when unused for long periods of time
14. Refer all servicing to qualified service personnel. Servicing is required when the apparatus has been damaged in any way, such as power-supply cord or plug is damaged, liquid has been spilled or objects have fallen into the apparatus, the apparatus has been exposed to rain or moisture, does not operate normally, or has been dropped.

FCC CUSTOMER INFORMATION

This device complies with Part 15 of the FCC Rules. Operation is subject to the following two conditions:

- (1) this device may not cause harmful interference, and
- (2) this device must accept any interference received, including interference that may cause undesired operations.

FCC RF Radiation Exposure Statement

This equipment complies with FCC RF Radiation exposure limits set forth for an uncontrolled environment.

WARNING

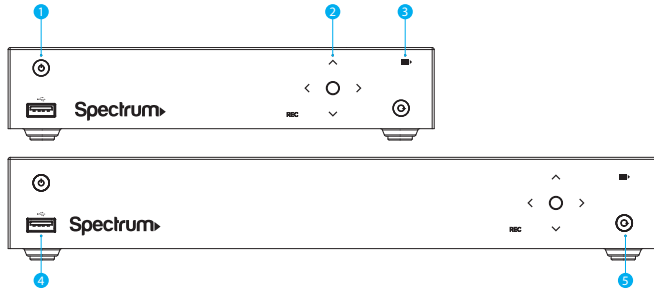
Any changes or modifications not expressly approved by the manufacturer could void the user's authority to operate the equipment.

This device and its antenna must not be co-located or operating in conjunction with any other antenna or transmitter.

This equipment should be installed and operated with a minimum distance of 20 centimeters (equal to 8 inches) between the radiator and your body.

Front

Note: The image may differ from the actual product.

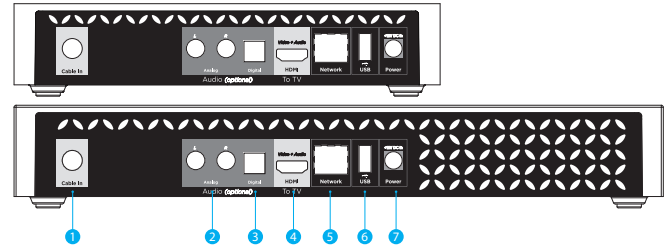


1. **Power:** Switches between operation and standby modes.
2. **Navigation:** Moves the cursor up, down, left or right. Selects a menu or confirms a selection.
3. **Menu:** Displays the main menu.
4. **USB:** Connect a USB storage device (5V===500mA).
5. **Reset:** Restores to the factory default setting.

Note: The product information label is on the bottom of the product.

Rear

Note: The image may differ from the actual product.

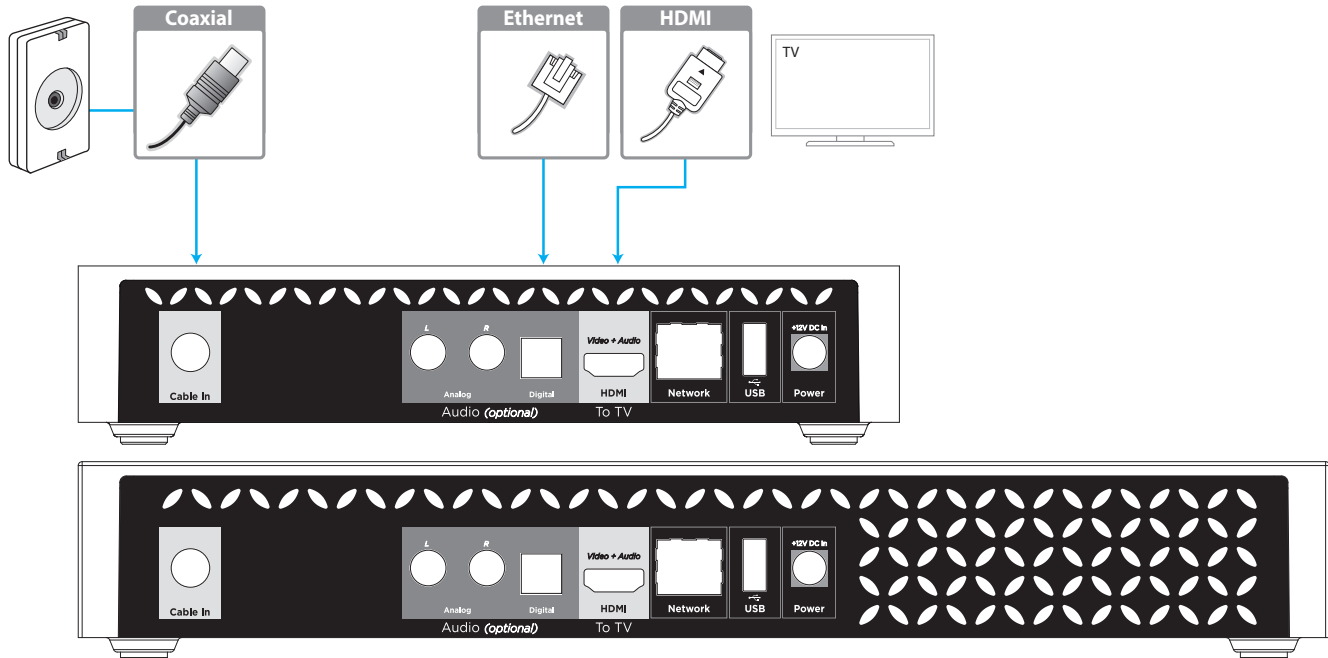


1. **Cable In:** Connect to a coaxial cable from your service provider.
2. **Analog:** Use an RCA cable to connect to the TV.
3. **Digital:** Use an SPDIF cable to connect to the audio system.
4. **HDMI:** Use an HDMI cable to connect to the high definition TV.
5. **Network:** Connect a LAN cable.
6. **USB:** Connect a USB storage device (5V===500mA).
7. **Power :** Use the AC adaptor to connect to the power supply.

Connections

This section describes how to connect your product to match your particular devices and to gain optimum signal quality.

Warning: Connect all devices before you plug any power cords into the wall outlet. Always turn off the product, TV and other devices before you connect or disconnect any cables.



Note:

- Make sure you use an adapter approved by UL.
- If degraded picture quality is observed while viewing copy-protected pay-per view programs, connect the set-top box directly to the TV set. Do not connect through a VCR.

Quick Start Guide

Connecting the Antenna

Connect a coaxial cable to the Cable In.

Connecting the TV

Using an HDMI cable

For the best picture quality, use an HDMI cable to connect to the TV.

Using an RCA cable

Using an RCA cable provides a lower resolution because the HD signal cannot be transmitted.

Note: Use an S/PDIF cable to connect to the audio system for digital audio.

Connecting the Network

Connecting to the LAN

Use the Ethernet cable to connect the product and the router.

