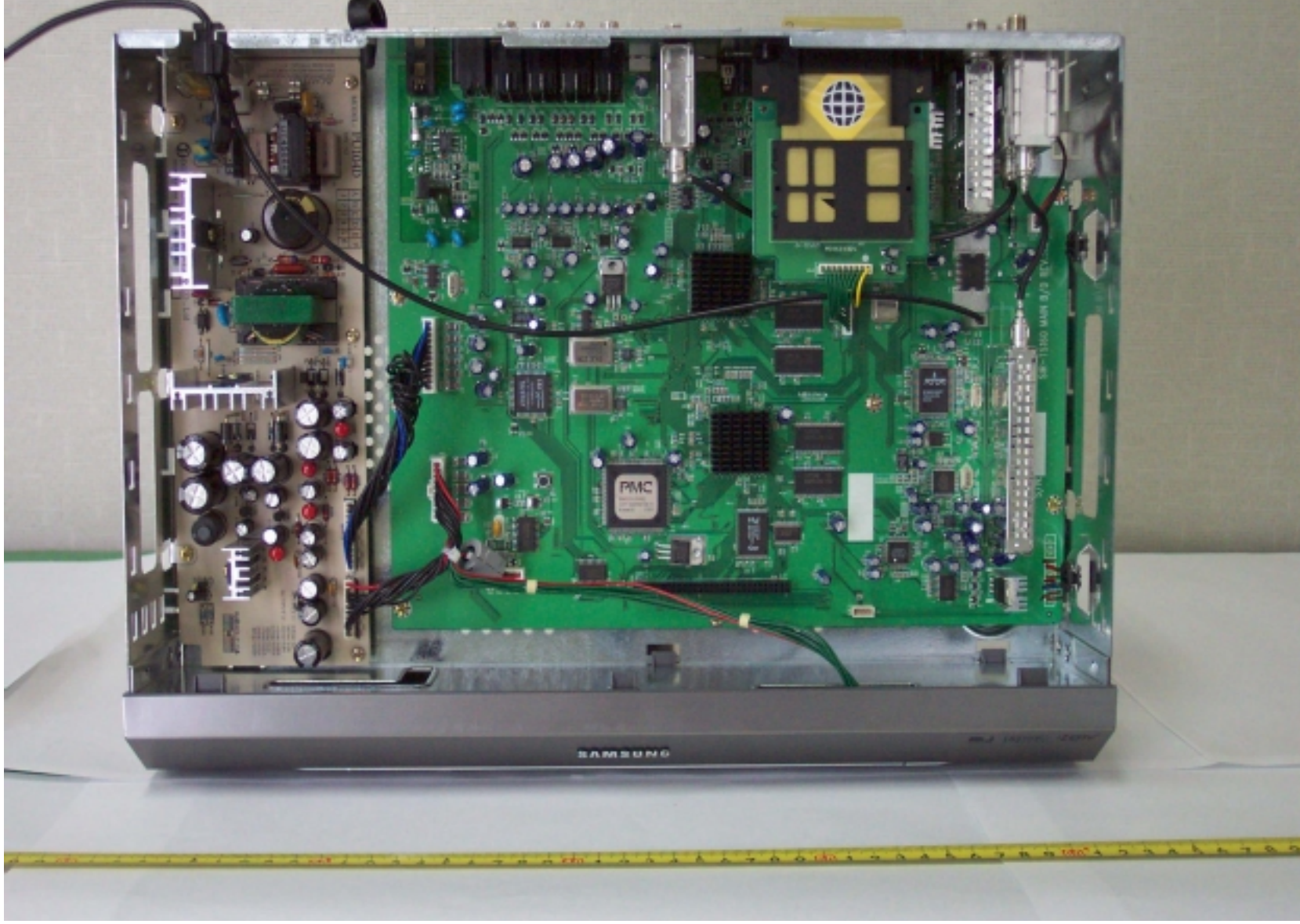
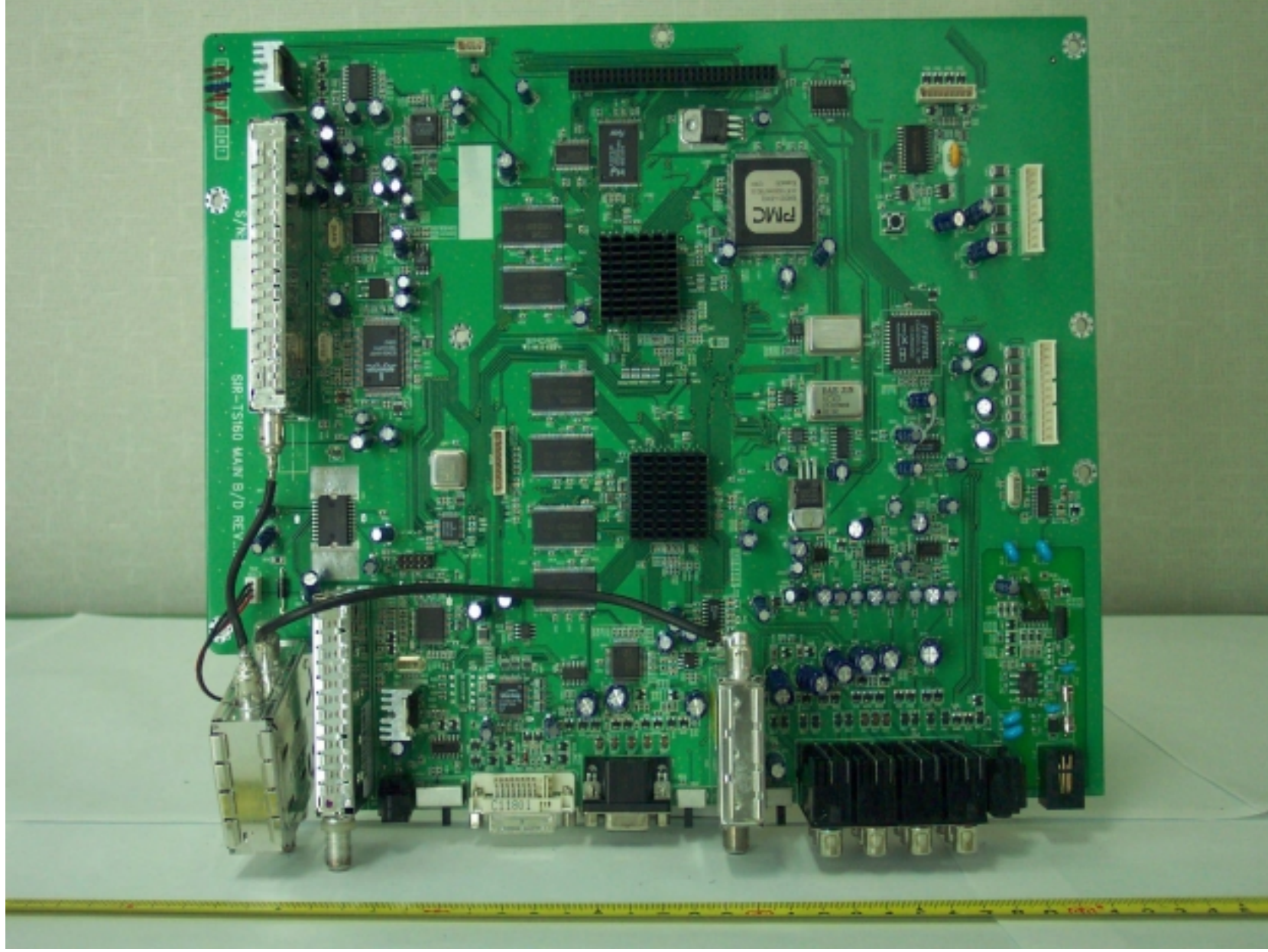


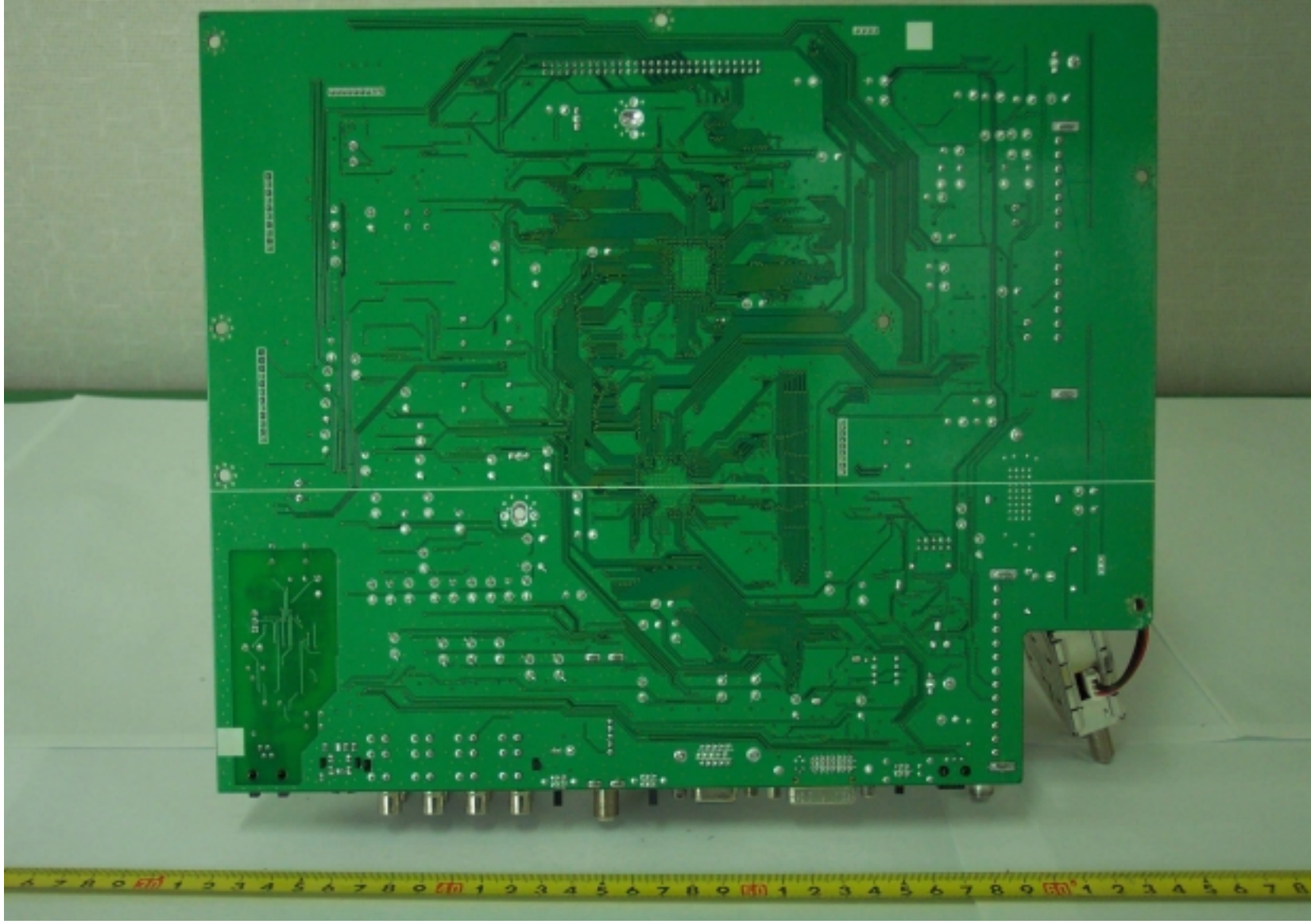
- Inside view of EUT



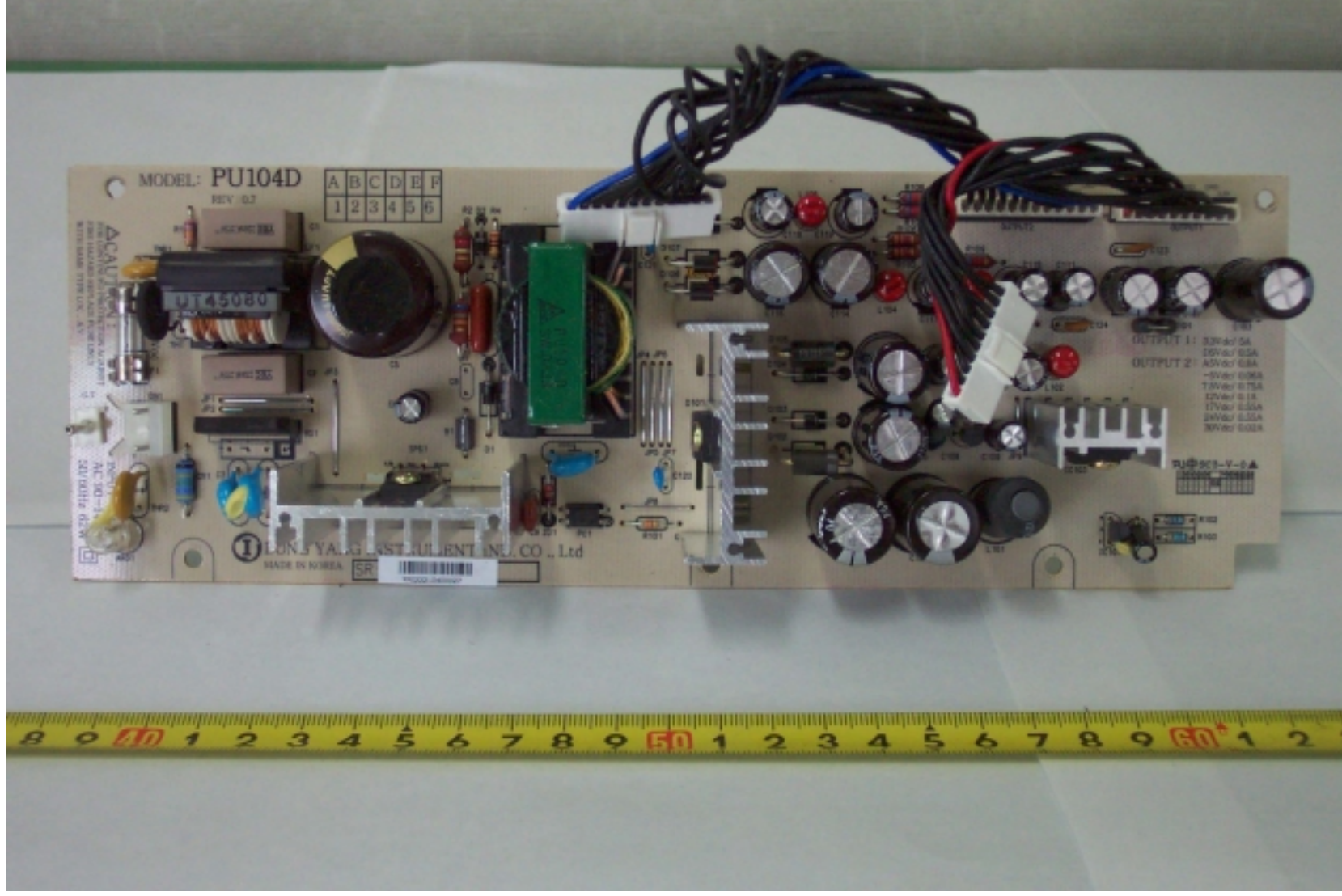
- Top View of Main board



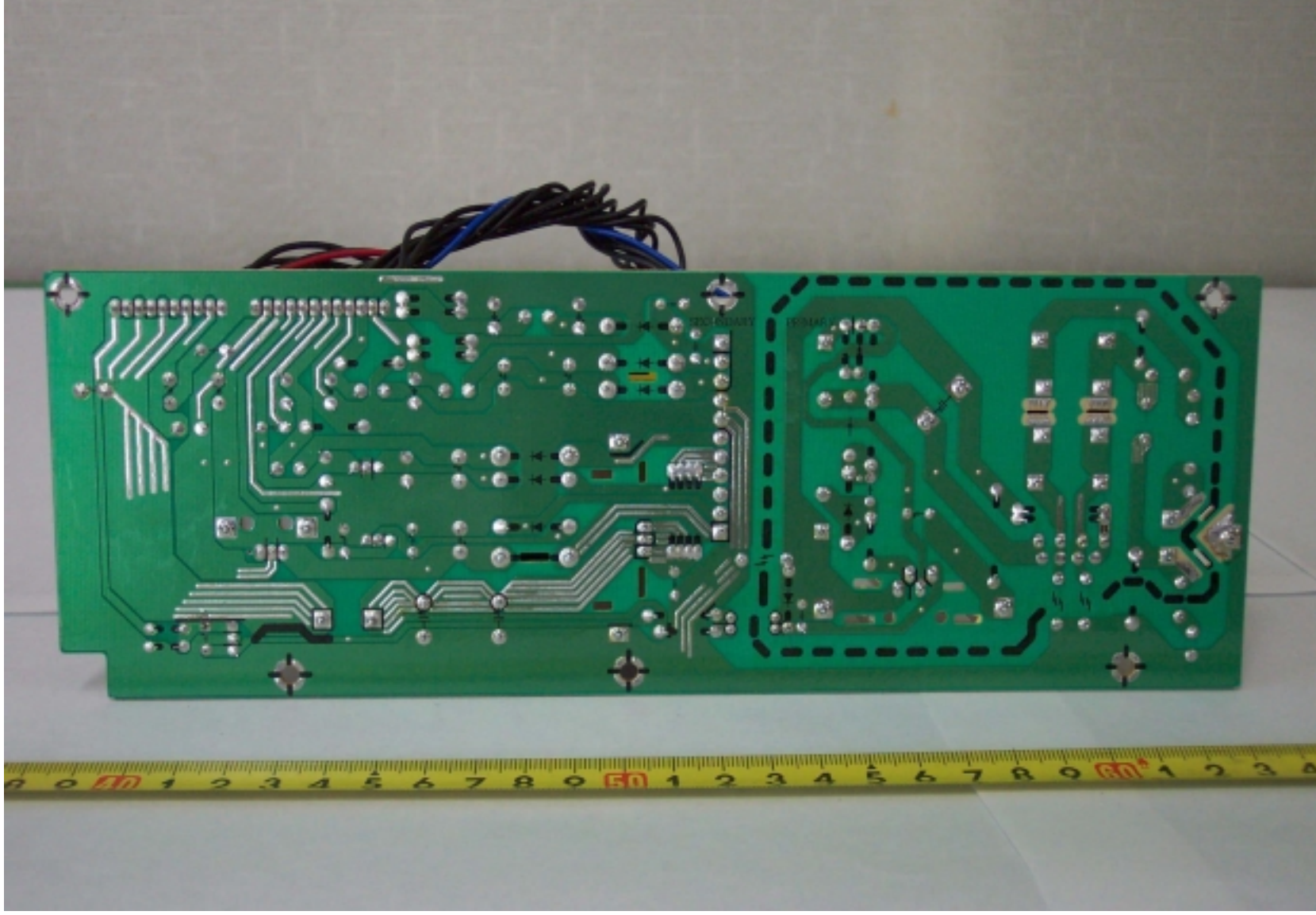
- Bottom View of Main board



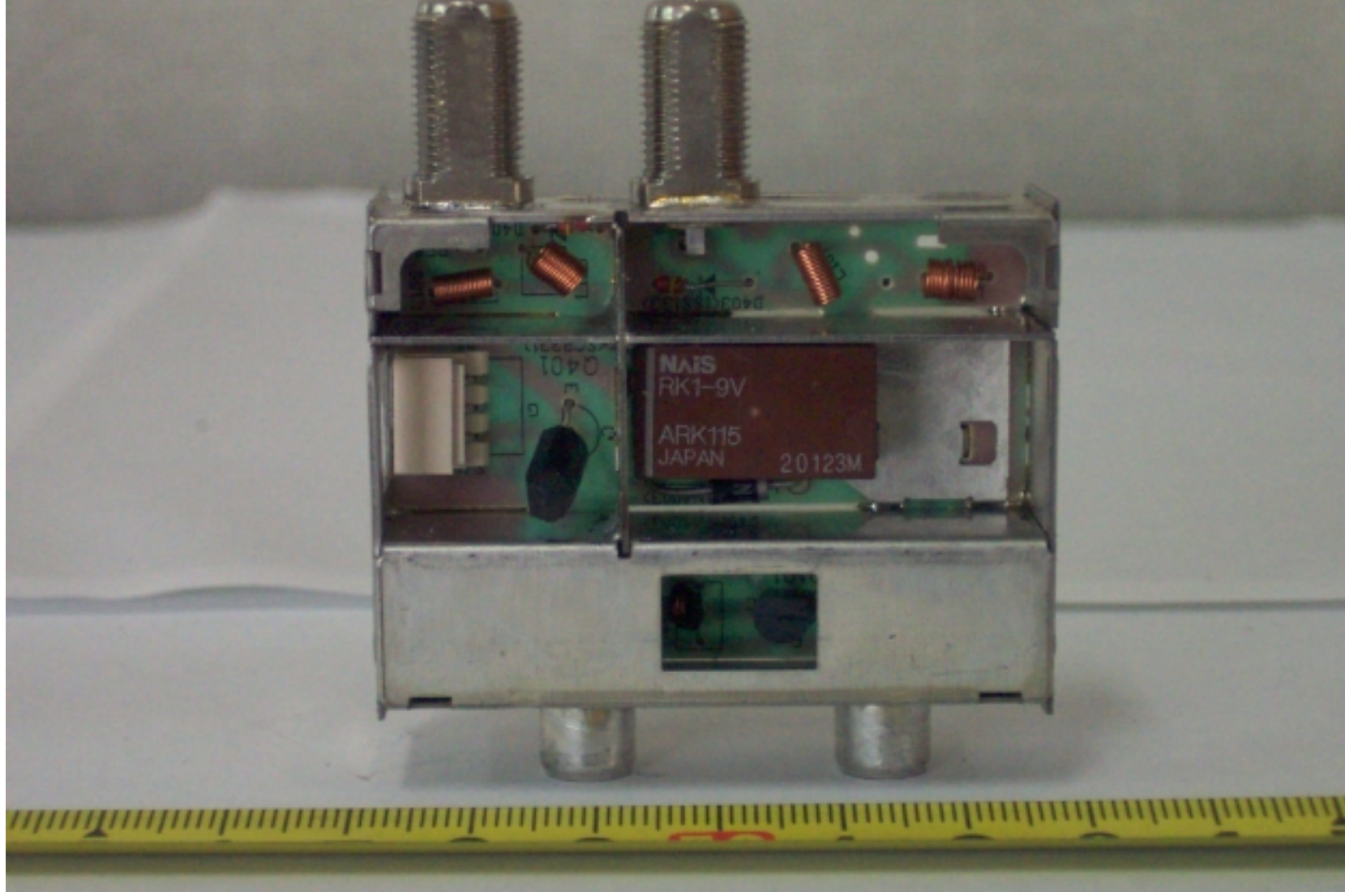
- Top View of Power board



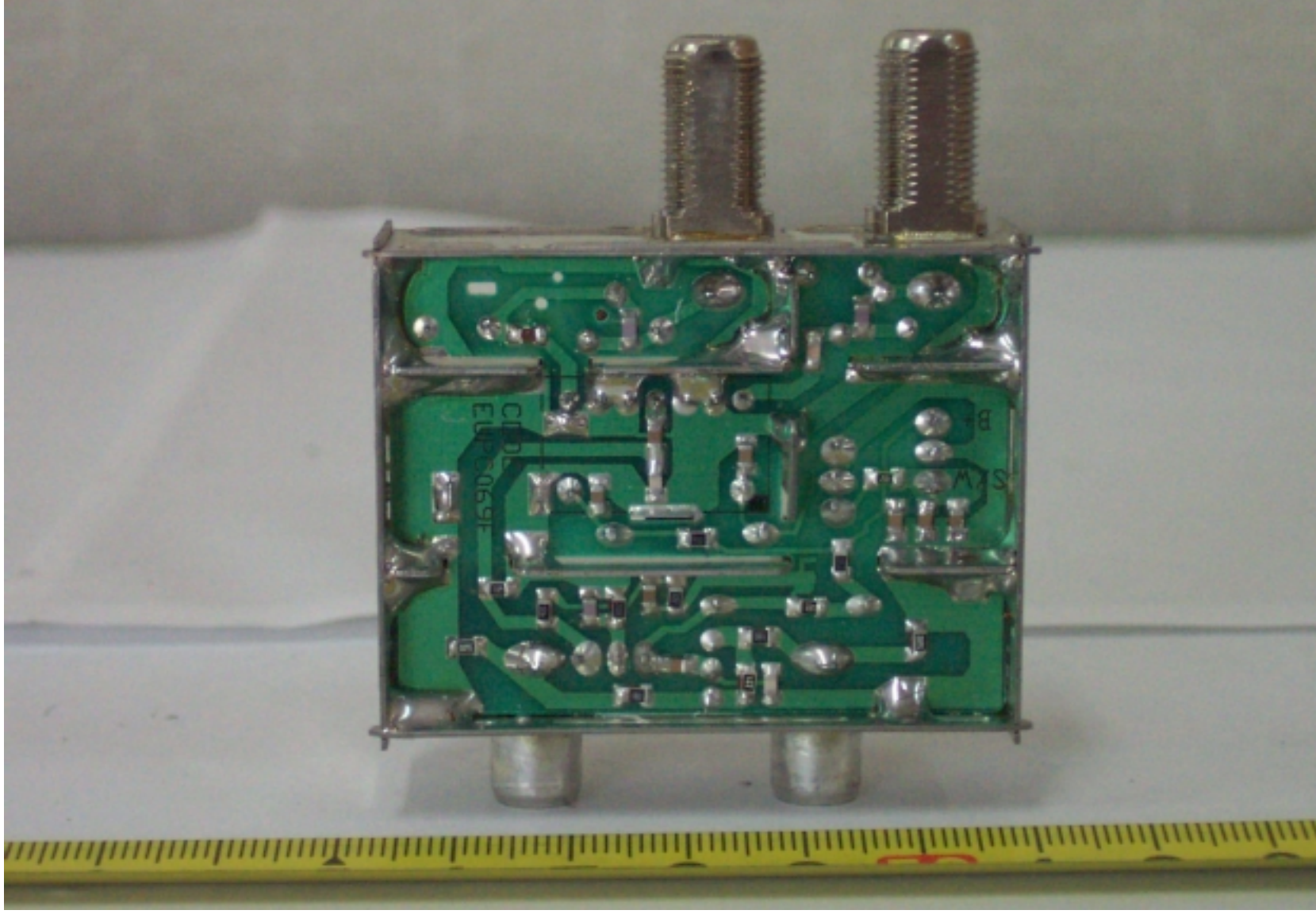
- Bottom View of Power board



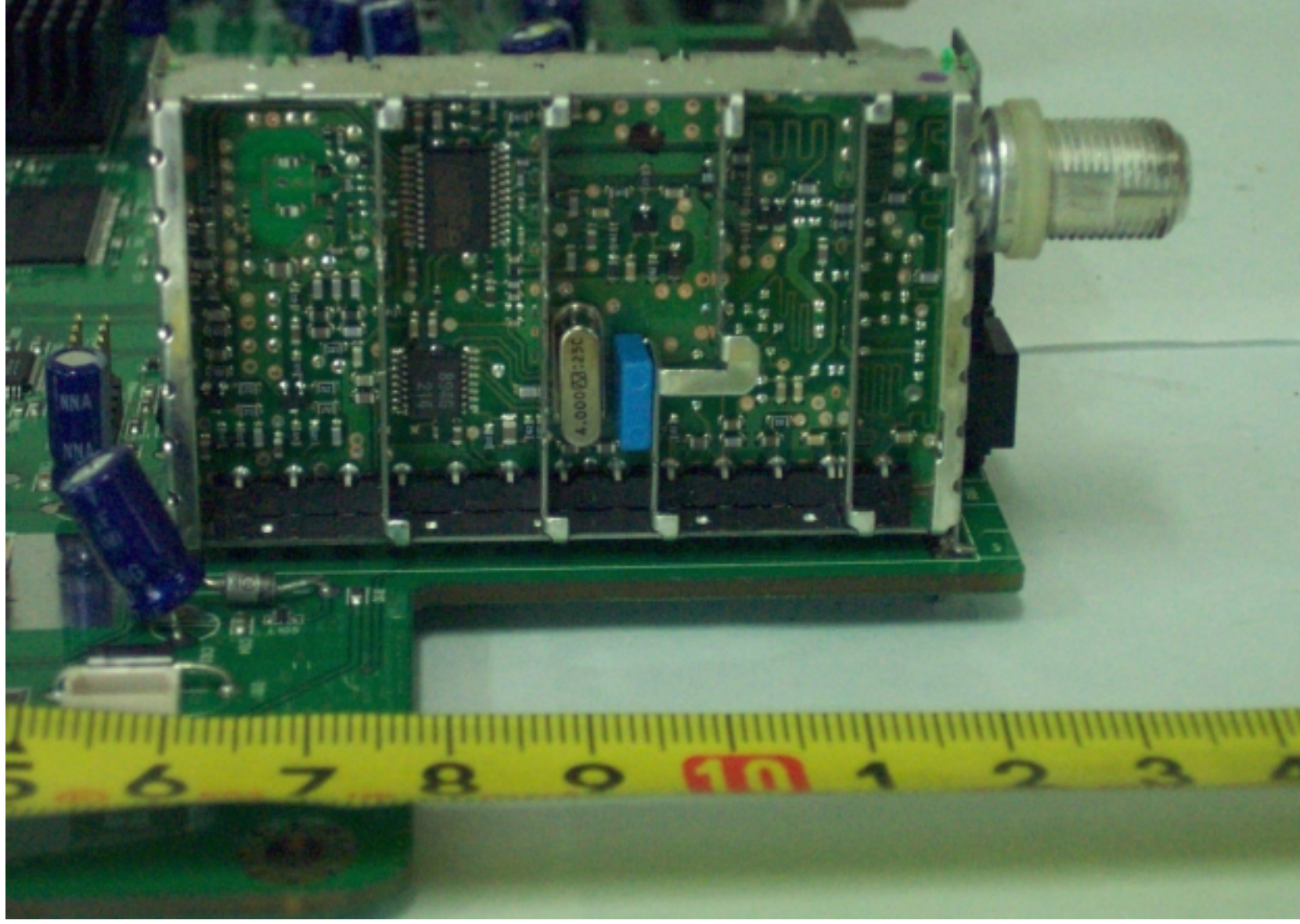
- Top View of ATSC Tuner



- Bottom View of ATSC Tuner

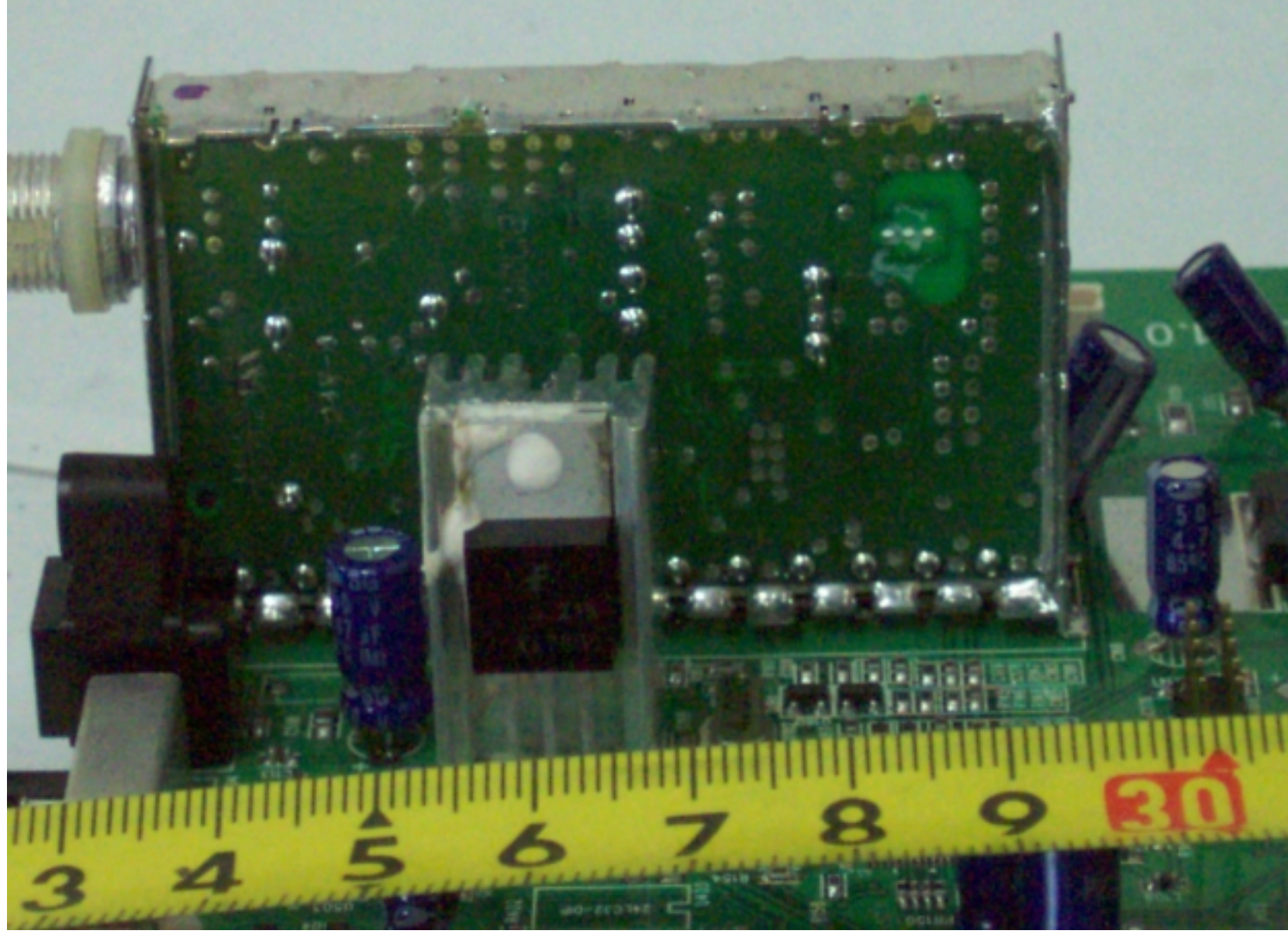


- Top View of satellite Tuner

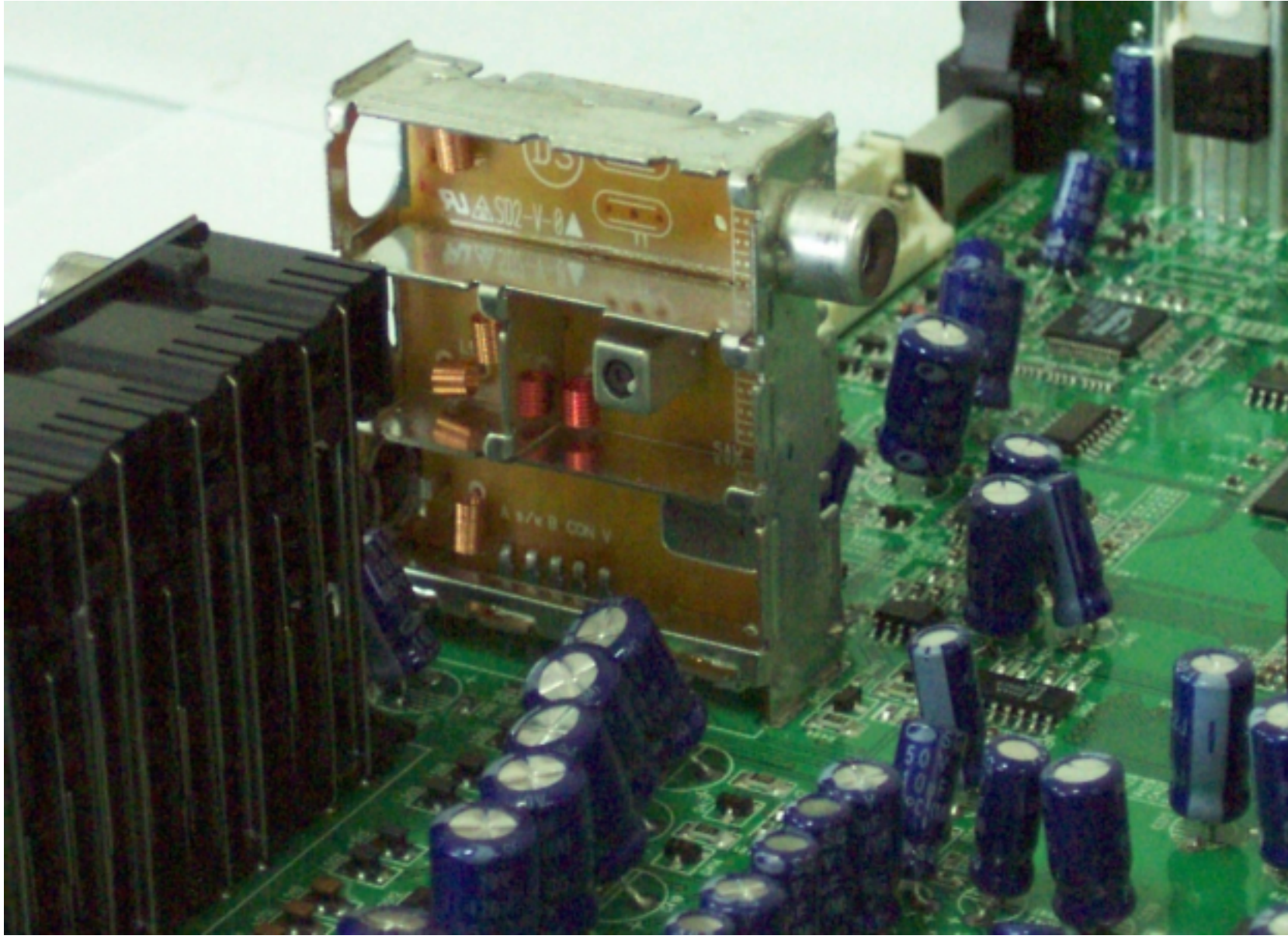




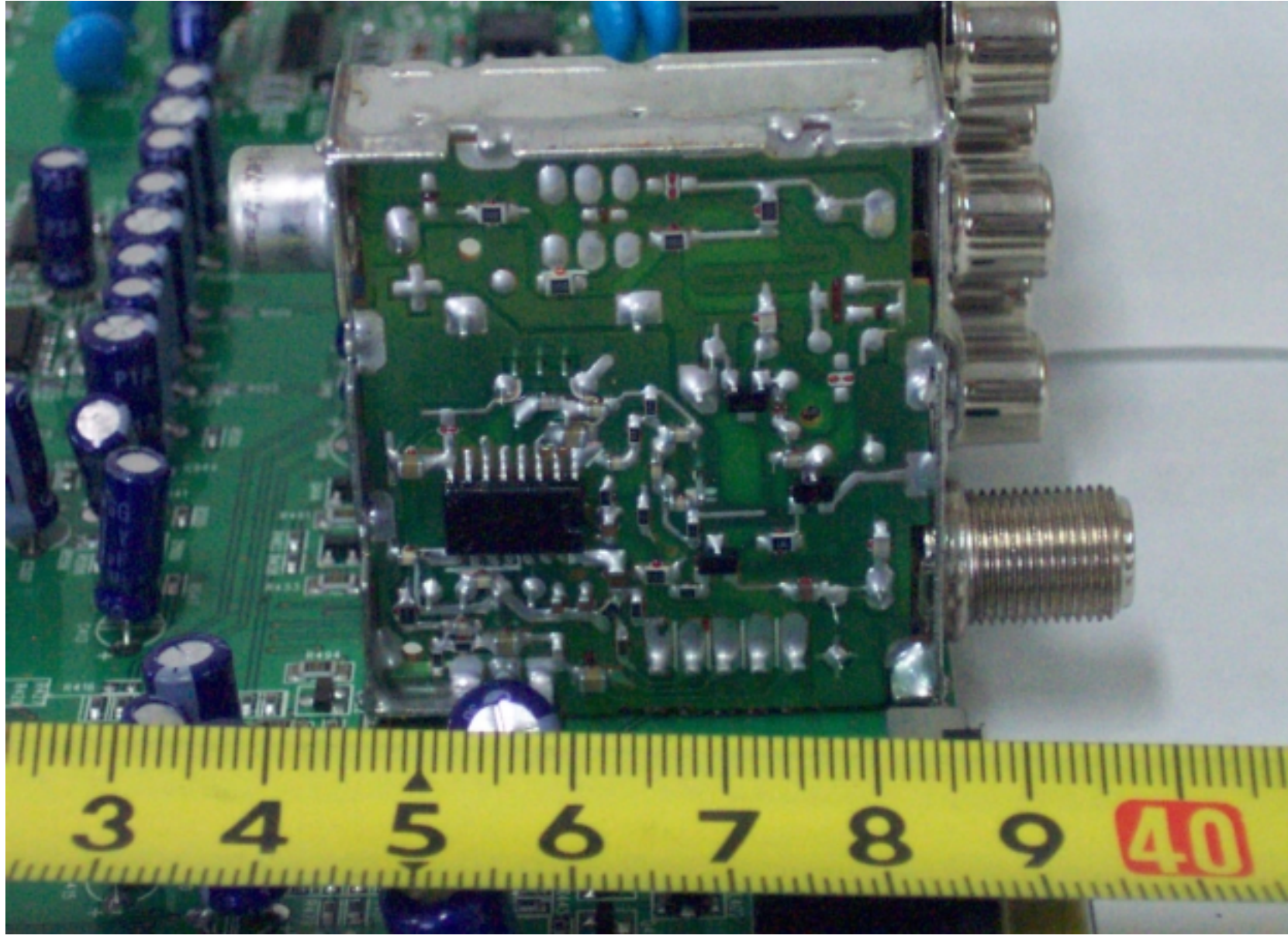
- Rear View of Satellite Tuner



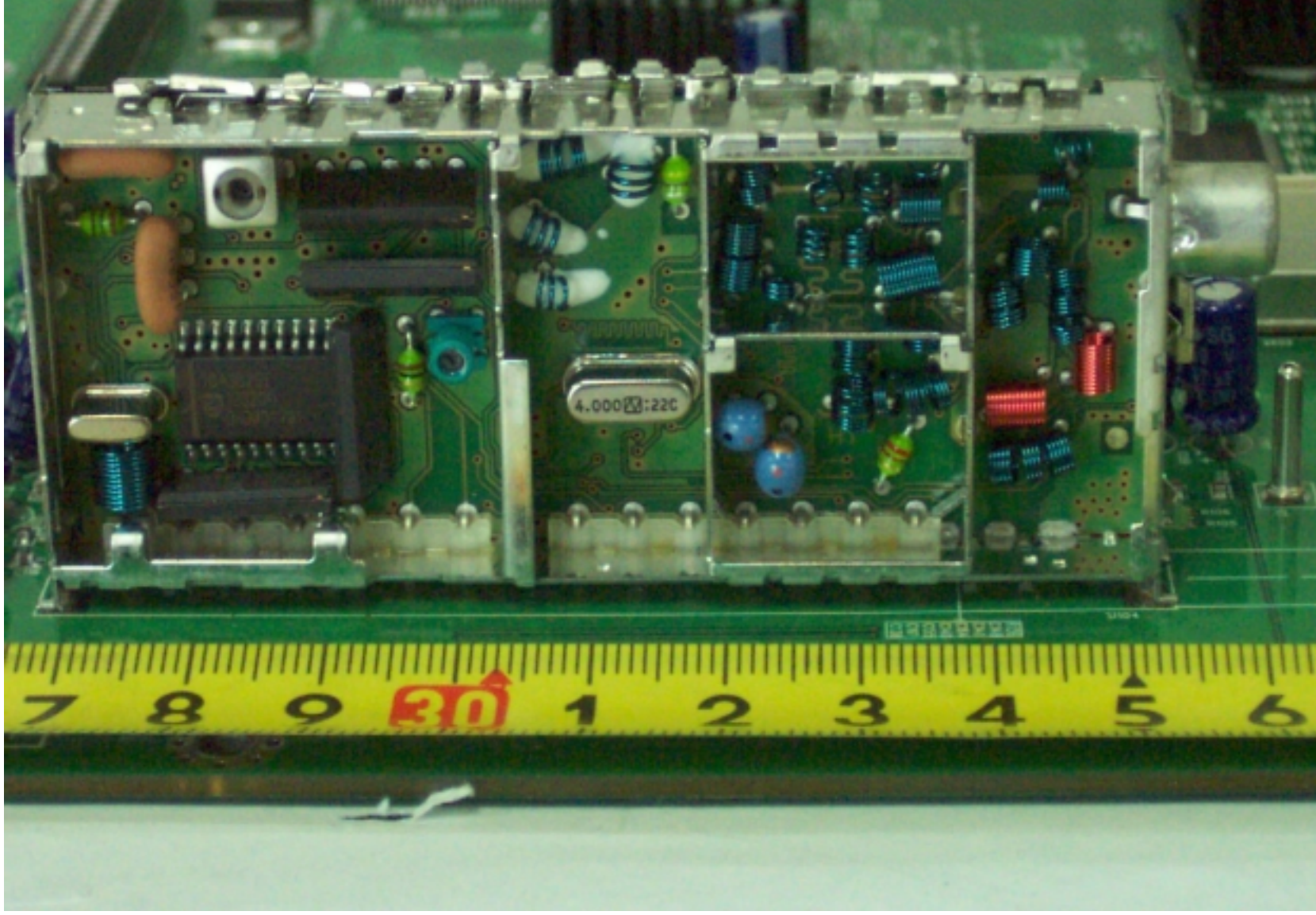
- Top View of RF out Tuner



- Rear View of RF out Tuner



● Top View of ATSC Channel Decoder Tuner



- Rear View of ATSC Channel Decoder Tuner

