

SAMSUNG ELECTRONICS

DIRECTV PLUS™
Digital Satellite Receiver

Owner's Manual

MODEL :

IMPORTANT INFORMATION

For your safety and protection, read this entire Owner's Manual carefully before you start to install or use your DIRECTV PLUS™ Digital Satellite Receiver. Keep this Owner's Manual where you can refer to it if necessary.

Installation

Polarization

Do not modify the plug defeating this feature. If the plug does not fit into your power outlet, contact an electrician to replace your outlet. To prevent the risk of electric shock, do not use this plug with an extension cord or outlet unless you can perfectly insert the blades without blade exposure.

Power Sources

Operate this product only from the type of power source indicated on the safety label. If you are not sure of the type or level of power supply at your home, ask your DIRECTV PLUS™ satellite receiver dealer or local power company.

Placement

To prevent personal injury or damage to this Digital Satellite Receiver, place the unit on a stable and flat table, stand or bracket. Avoid places near or over a heat register or radiator.

Keep this Digital Satellite Receiver away from water and moisture to avoid the risk of electric shock or damage to the unit.

Satellite Dish Antenna Grounding

The satellite dish antenna and the cable connecting the dish to the Digital Satellite receiver are required to comply with local installation codes and the appropriate sections of the National Electric Code (NEC), in particular

Article 810-15 covering proper installation and grounding of television receiving equipment, and Article 820-33 specifying the satellite dish antenna cable ground shall be connected to the grounding system of the building as close to the point of cable entry as practical.

These codes require proper grounding of the metal structure of the outdoor satellite dish antenna and grounding of the connecting cable at a point where it enters the house (or other building). If you are having a professional installer perform the installation, the installer must observe installation codes. This manual contains instructions on how to make the installation in compliance with the NEC. Contact local inspection authorities to determine if local installation codes apply.

Television and Antenna Information

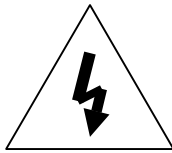
Installing an outdoor antenna can be hazardous and should be left to a professional antenna installer. Do not locate the outside antenna system in the vicinity of overhead power lines or other electric light or power circuits, or where it can fall into such power lines or circuits. When installing an satellite dish antenna, take extreme care to keep from touching such power lines or circuits as contact with them might be fatal. Be sure the satellite dish antenna is grounded so as to provide some protection against voltage surges and built-up static charges. Section 810 of the NEC, NFPA No. 70 1978, provides information with respect to proper grounding of the mast and supporting structure, grounding of the lead-in wire to an antenna discharge unit, size of the grounding conductors, location of antenna discharge unit, connecting to grounding electrodes, and requirements for the grounding electrode.

Power Lines

Exercise caution when installing, adjusting, or maintaining the outdoor antenna and connecting cable, particularly near overhead power lines, electric lights, or power circuits. When the outdoor antenna or cable is installed, keep from touching or approaching such power lines or circuits, as contact with them might be fatal.

WARNING!

To reduce risk of fire or shock hazard, do not expose this unit to rain or moisture.



This symbol indicates the presence of uninsulated “dangerous voltage” inside the product’s enclosure that may be of significant magnitude to constitute a risk of electric shock or personal injury.



This symbol is intended to alert the user to the presence of important instructions about operating and maintenance in the literature accompanying the appliance.

Cautions

Do not stack electronic components or other objects on top of the DIRECTV PLUS™ Digital Satellite Receiver. The slots on top of the receiver must be left uncovered to allow proper airflow to the unit. Blocking the airflow to the unit could impair performance or damage your receiver

and other components.

Do not stack the Digital Satellite Receiver on top of “hot electric components” such as an audio power amplifier.

Attention

Telephone Line Interruption

Periodically, (about once per month), Pay Per View purchase information is sent, free of charge, via your telephone line to a toll free number. These calls are typically made in the middle of the night, your phone is in use for approximately 30 seconds. When you have to use your telephone in urgent cases, pick up the telephone and hang up several seconds later.

Trademark

Samsung is a trademark of Samsung Electronics. DIRECTV, the Cyclone Design logo and DIRECTV PLUS are trademarks of DIRECTV, Inc., a unit of Hughes Electronics, and are used with permission.

Note on Recording Programming

Television programs and films are copyrighted. Programs and films may be taped for private home-viewing only. Some pay per view programs may be licensed as “view-only” programs

Owner’s Record

The model and serial numbers are located on the bottom of the DIRECTV PLUS™ Digital Satellite Receiver. The number for the Access Card is on the back of the card and on the carton label. Record these numbers for whenever you need to call your sales or service representative regarding

this product.

Model Number: _____

Serial Number: _____

Access Card Number: _____

Customer Support

For DIRECTV® Programming

For subscription information, or to resolve problems related to programming, call:

DIRECTV at 1-800-DIRECTV (1-800-347-3288) or visit the web site of DIRECTV (www.DIRECTV.com)

For Installation

To arrange for the installation of your Digital Satellite Receiver, call the dealer from whom you purchased your system.

For Hardware

To resolve problems related to this Digital Satellite Receiver, call:

Samsung Customer Support at 1-800-SAMSUNG.

INFORMATION TO THE USER

This equipment has been tested and found to comply with the limits for a Class B digital device, pursuant to part 15 of the FCC Rules. These limits are designed to provide reasonable protection against harmful interference in a residential installation. This equipment generates, uses and can radiate radio frequency energy and, if not installed and used in accordance with the instructions, may cause harmful interference to radio communications. However, there is no guarantee that interference will not occur in a particular installation. If this equipment does cause harmful interference to radio or television reception, which can be determined by turning the equipment off and on, the user is encouraged to try to correct the interference by one more of the following measures:

- Reorient or relocate the receiving antenna.
- Increase the separation between the equipment and receiver.
- Connect the equipment into an outlet on a circuit different from that to which the receiver is connected.
- Consult the dealer or an experienced radio/TV technician for help.

WARNING

Changes or modifications not expressly approved by the manufacturer could void the user's authority to operate the equipment.

Table of contents

IMPORTANT INFORMATION..... 1

Table of contents6

Setting Up7

Getting Strated!12

Viewing Programs On DIRECTV PLUS15

The On-Screen Guide18

Menu Overview17

Profiles23

Options25

Setup.....28

Extras30

Warranty.....31

Setting Up

CARTON CONTENTS

Check out your carton to make sure it contains the following items.

If you are missing any items, contact your Samsung dealer.



DIRECTV PLUS™
Digital Satellite Receiver



A/V cable



Remote Control



AAA Size
Batteries



Telephone Cord



RF Coaxial Cable

Installing Remote Control batteries

Whenever you need to install or change the batteries in your remote control, follow these steps.

1. Slide off the cover of battery compartment cover from the back of the remote control.
2. Insert 2 AAA batteries, making sure the + and – end of each battery line up with the marks in the battery compartment.
3. Snap the cover back onto the remote control.

CONNECTIONS

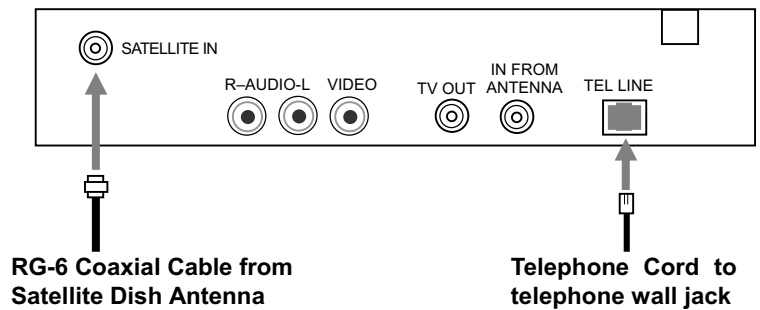
For your safety, be sure to unplug your Digital Satellite Receiver, TV, VCR and any other electronic devices before connecting them.

Connecting the Satellite Dish Antenna

The Digital Satellite Receiver sends power to the Satellite Dish Antenna and receives satellite signals through the SATELLITE IN jack. Connect your Satellite Dish Antenna to the SATELLITE IN jack. Be sure to use RG-6 cable only.

Connecting the Telephone Line

The telephone line is necessary to send information about your receivers and Access Card to your service provider. The Digital Satellite Receiver only makes toll free calls. Plug one end of the provided telephone cord into the TEL LINE jack on the back of the Digital Satellite Receiver and the other end into a telephone wall jack.



Connecting Your TV

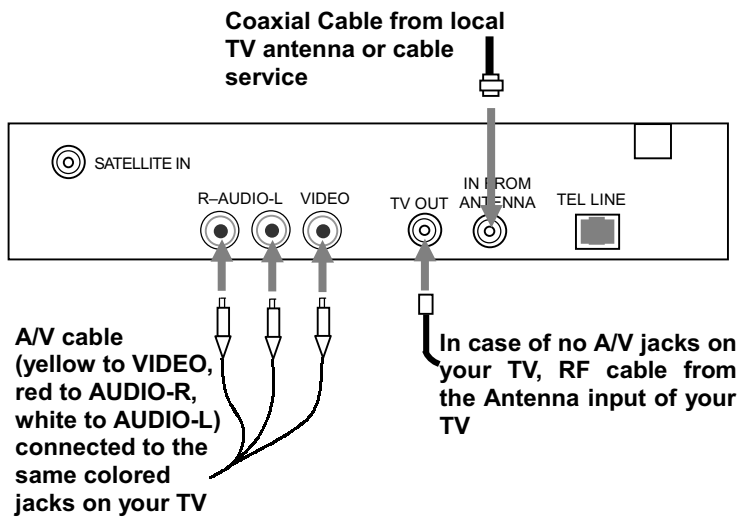
The Digital Satellite Receiver needs a connection to your TV in order to show pictures on the screen. You may use either the R-AUDIO-L, VIDEO jacks, or the TV OUT jack on the back of the Receiver.

If you have a local TV antenna or receive a cable company service,

connect it to the IN FROM ANTENNA jack on the Digital Satellite Receiver by using a coaxial cable or RF adapter(not supplied)

The AUDIO-R/L and VIDEO jacks are recommended for very good picture and stereo sound quality. Connect the VIDEO jack (yellow) on the Digital Satellite Receiver to the Video input jack (yellow) on your TV by plugging in both yellow ends of the A/V cable. Plug a red end of the A/V cable to the AUDIO-R jack (red) on the back of the Digital Satellite Receiver and the other red end to the Audio-R input jack on your TV. Connect the AUDIO-L jack (white) in the same way. Be sure to match the colors on the jacks with the colored plugs on the A/V cable. If your TV has only one input for audio (mono), connect it to the AUDIO-R (red) on the Digital Satellite Receiver.

If your TV does not have A/V jacks, connect TV OUT jack on the Receiver to the Antenna Input of your TV with the supplied RF cable. With this connection, DIRECTV programs will display on the channel 3 or 4 of your TV . To set the TV output channel refer to setup menu.



INSERTING THE ACCESS CARD

The access card must be inserted to receive DIRECTV® programming. Open the door on the front panel of the Digital Satellite Receiver and insert the access card. Call DIRECTV at 1-800-DIRECTV (1-800-347-3288) to order. The access card should only be removed since when replacing the card with a new one provided by DIRECTV.



Open the door and insert the access card.

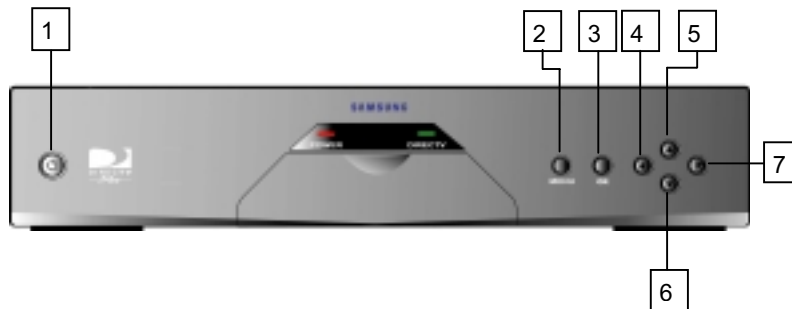


Access card

Getting Started!

KEYS ON FRONT

The DIRECTV PLUS™ Digital Satellite Receiver provides several functional keys on the front panel.



- 1 POWER** Switches the Digital Satellite Receiver on and off.
- 2 MENU** Displays the Main Menu.
- 3 OK** Selects the highlighted menu item.
- 4 LEFT** Moves the highlight left in the menus.
- 5 UP** Moves the highlight up in the menus.
- 6 DOWN** Moves the highlight down in the menus.
- 7 RIGHT** Moves the highlight right in the menus.

REMOTE CONTROL

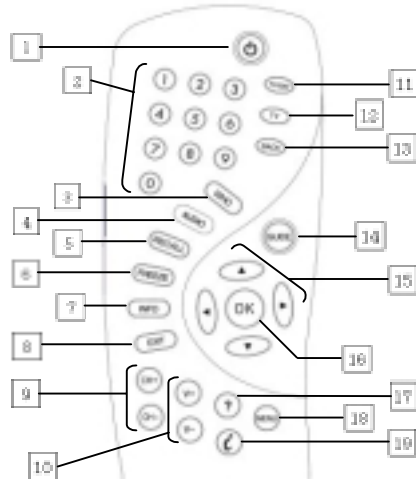
The remote control controls the Digital Satellite Receiver by using infrared rays to send signals to your device.

Aim the remote at the Digital Satellite Receiver and softly press the keys to control it.

Refer to the TV code at the Appendix for programming the remote control

for your TV.

The Keys On The Remote Control



1 POWER

Switches the Digital Satellite Receiver on or off.

3 0 - 9

Change channels directly, and enter numerical values in menus.

7 WHO (red key)

Changes the current user's profile.

4 AUDIO (green key)

Selects the audio track while watching TV. Scrolls the timeline by ± 6 hours while in the On-Screen Guide.

5 **RECALL** (yellow key) Returns to the previous channel while watching TV. Allows category sorting while in the On-Screen Guide.

6 **FREEZE** (blue key) Takes a still picture of current screen while watching TV. Pressing it again returns to video. Allows subcategory sorting while in the On-Screen Guide. You can catch a important information by using the Freeze key. For example you can write down the toll free numbers on TV advertisements by using the Freeze key.

7 **INFO** Displays the Channel Banner and information about the current program.

8 **EXIT** Exits any menu and returns the user to video.

9 **CH +, CH-** Change channels. When a programming guide is displayed,

these keys function as page up and page down keys.

10 V +, V- Adjust the volume levels of your TV. To operate your TV, you have to first program the remote control.

11 SAT Makes the remote control operate your Digital Satellite Receiver.

12 TV Makes the remote control operate your TV. To operate your TV, you have to first program the remote control.

13 BACK Returns you to the previous screen in the Main Menu.

14 GUIDE Displays the on-screen programming guide.

15 ▲▼◀▶ Move the highlight in on-screen displays

16 OK Selects the highlighted item in the menus. After you enter a channel number by using 0 - 9 keys, press OK to change the channel immediately.

17 ? Displays help messages about various functions.

18 MENU Opens the Main Menu.

19 i Reserved for future DIRECTV interactive services.

TURN ON AND OFF THE POWER

First turn on your TV and set it to channel 3 or input (ex: video). Press the power key on the remote control or on the front panel of the Digital Satellite Receiver for viewing. When the power is on, the red LED on the front panel will light up.

Press the POWER key again to turn the Digital Satellite Receiver off.

Viewing DIRECTV® Programs

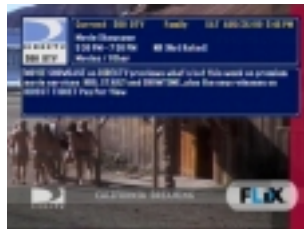
CHANNEL CHANGING

Use the CH+/- keys or ▲/▼ keys on the remote control to turn to the next channel. You can also change channels by entering the channel number by pressing the 0 - 9 keys, and then either pressing the OK key or waiting a few seconds.

CHANNEL BANNER







Anytime you press the INFO key or change channel, the channel Banner will be displayed at the top of the screen. Pressing the EXIT key will remove the channel banner immediately. The channel banner will show the channel logo, the channel name and number, profile information, the current time, program title, start time and end time, rating information, and icons when appropriate.



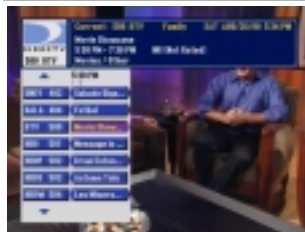
When the Channel Banner is displayed on the screen, pressing the INFO key will display the Information Banner. It shows the available description of the current program.

Icons

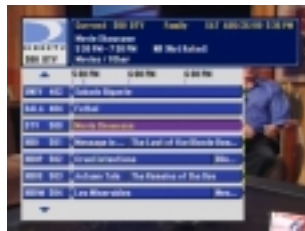
AUDIO **ALTERNATIVE AUDIO** Appears when the program supports multiple audio tracks. Use the AUDIO button to toggle through the different audio tracks

-  **LOCK** Appears when the channel is locked by user.
-  **UNLOCK** Appears when the channel is not locked by user.
-  **MAIL** Appears when unread mail messages from DIRECTV exist.
-  **MUSIC** Appears when you are turned to a music choice channel

CHANNEL LIST



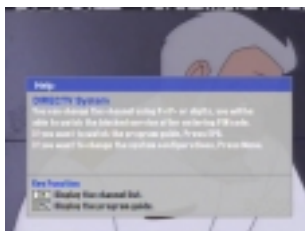
The Channel List displays the program list of each channel. When you press the OK key on the remote control, the Channel list will display the current programs.



Each time you press the ► key, the programs of the next 30 minutes will be displayed. When you press the INFO key while in the Channel List, the Information Banner will appear. If you press the INFO key once more, the Information Banner will

disappear. When you press the Exit key, the channel list and information banner will disappear.

HELP SCREEN



The Digital Satellite Receiver provides “help messages” for more explanation about how to use and what functions are. Press the ? key on the remote control when you need some help. When the help message is long,

you can scroll the help screen to read more.

Menu Overview



To enter the Main Menu, press the MENU key on the remote control or on the front panel.

The Main Menu consists of five choices: Guide, Profiles, Options, Setup and Extras.

Guide

The DIRECTV Programming guide will deliver information about channels and programs. Please refer the DIRECTV Programming Guide on page 17.

Profiles

The Profiles menu lets you set up profiles of users such as channel list, rating limit, spending limit and user names.

Options

You can set up the preferences for the on-screen menu system and timer. You can also view the mail messages and purchasing information.

Setup

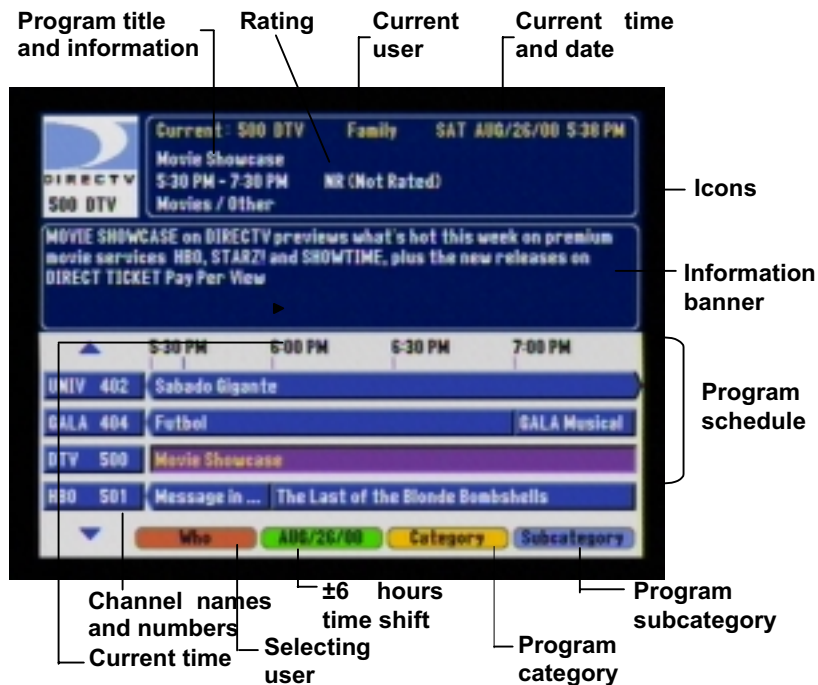
The Setup menu allows you to change the configuration of your Satellite Dish Antenna and helps you to properly point your dish. It also provides a system test screen, a means for replacing your access card, and information on system upgrades.

Extras

The Digital Satellite receiver contains a calendar, biorhythm selector and a game, Tetris.

The DIRECTV® Programming Guide

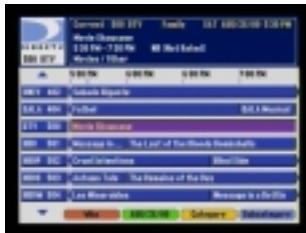
The DIRECTV PLUS™ Digital Satellite Receiver delivers detailed information about programs such as program summary, schedule, category and channel description by the DIRECTV Programming Guide. To display the DIRECTV Programming Guide, press the GUIDE key on the remote control or press select Guide at the Main Menu.



The Information Banner will appear by pressing the INFO key on the remote control. When you press the INFO key once more, the Information Banner will disappear.

SCROLLING

Scrolling channels



You can scroll channel by channel in the DIRECTV Programming Guide by using the ▲/▼ keys. If you want to scroll the guide faster, use the CH+/- keys on the remote control. They act as page up and page

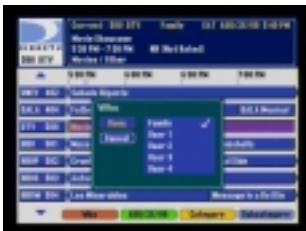
down keys while in the guide.

Scrolling programs

Use the ◀/▶ keys to scroll the future schedule of programs displayed in the guide.

ADDITIONAL FUNCTIONS

Selecting a user



You can choose the current user profile in the programming guide. To learn how to modify users' profiles, refer to the Profile section of the Menu Overview.

In the programming guide, press the red WHO key on the remote control. Highlight the user you want and press the OK key. The selected user will be marked with √. Then highlight Done and press the OK key to make the change effective, or highlight Cancel and press the OK key to cancel.

Shifting the time slot

The DIRECTV Programming Guide can show two hours of scheduled programming. You can shift the time slot by pressing the ◀/▶ keys. If you



want to quickly view future programming, press the green AUDIO key to shift the time slot.

Program category



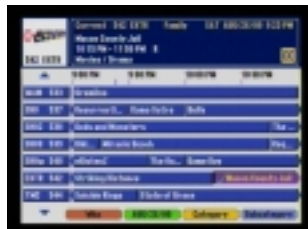
While in the DIRECTV Programming Guide, you can sort channels by category by pressing the yellow RECALL key on the remote control. Select the sorting category by pressing the OK key. If you want to

clear the selection, highlight Clear and press the OK key. To make the category selection effective, highlight Done and press the OK key.

Program subcategory

After you select a category, you can also sort the channels by subcategory by pressing the blue FREEZE key. This will refine your initial category sort.

SELECT AND RESERVE A PROGRAM



To select the current program of the channel you want, use the ▲/▼ keys to move the highlight and press the OK key.

If you want to reserve a program, move the highlight using the ◀/▶ keys and reserve

the program you want pressing the OK key. The reserved program will have a ✓ mark. You can reserve up to 8 programs. When the reserved program starts, the channel will be tuned automatically.

PURCHASING PROGRAMS



You can purchase DIRECTV Pay Per View movies and events by using your remote control. To purchase programs, press the GUIDE key and select the PPV channel and the program you are interested. If you select the program moving the highlight, press the OK key and the purchasing screen will be displayed. The information about the program and the price of the event will be displayed.



View

After you move the highlight to View Channel option and press the OK key, the channel will be tuned to view it.

Show times

If you want other times the program is available, highlights Show Times and press the OK key. If you want to go to the previous screen, highlight Return and press the OK key. When you want other schedule of the program, highlight More and press the OK key.

Buy

To purchase a program, press the OK key when the Buy option is highlighted. Be sure your telephone line is connected properly before making a purchase. You will be asked to confirm your purchase. If you are not authorized to make



the purchase before it takes effect.

Schedule

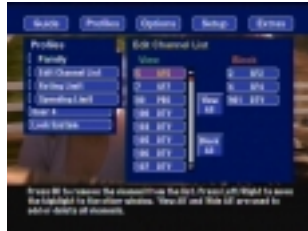
If you want to schedule a timer for the purchased program, highlight the Schedule and press the OK key.

Profiles

FAMILY & USER 1-4

To enter the Profiles menu, highlight Profiles in the Main Menu and press the OK key.

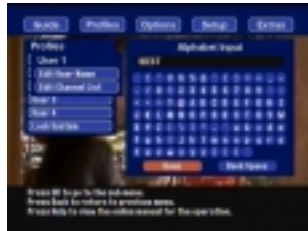
Edit channel list



You can edit the channel list for family and user 1-4. It is easy to set up your channel list for each profile. Scroll the channels at the Viewable and press the OK key to make the channel hidden. The channels in

Hidden will not show up by using the ▲/▼ keys on the remote control but you can select the channel by using the number key in the remote control. When you want to change a hidden channel into viewable channel, highlight the channel at Hidden and press the OK key. The channel list is set by locking the system.

Edit user name

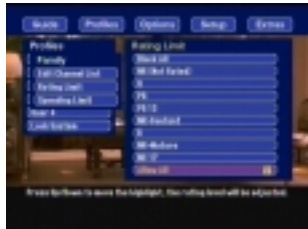


The names, User1 - User4, can be changed by selecting one of the users and then selecting the Edit User Name item.

You can name the user by using the ▲/▼/◀/▶ keys and the OK key to highlight and select characters. When finished, highlight Done and press the OK key.

Rating Limit

The Rating Limit menu makes you set up a maximum rating of viewing



limit for rated programs. The rating setting is based on the movie rating system. Open the Rating Limit menu and select the rating limit using the ▲/▼ keys. The rating limit is set by locking the system.

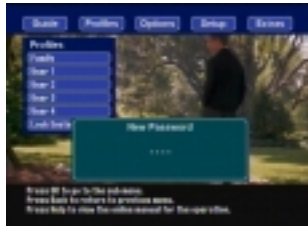
Spending Limit



You can set the maximum spending price for a Pay Per View program/event. Use the 0 - 9 keys to set the price per program/event. The spending limit is set by locking the system.

LOCK/UNLOCK SYSTEM

Locking profiles



To set your profiles, the system needs to be locked. Selecting the lock system item will ask you for a four digit password. After highlight Locking System and press the OK key, password screen will appear. Enter a password using 0 - 9 keys. Once entered and confirmed, this password will be needed to modify and channel lists, rating limits, or spending limits.

Unlocking profiles

If you unlock the profiles, the channel lists and the spending, and rating limits set are no longer effective. Any password may be used to re-lock the system.

Options

SCREEN

Screen size

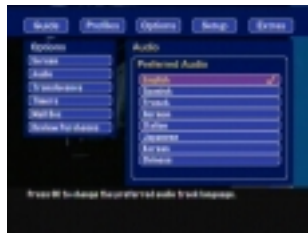


You can change the screen size to fit your TV. You can select a 4:3 or 16:9 aspect ratio by using the OK key. The 4:3 aspect ratio is for a standard TV and the 16:9 for a wide screen TV.

Screen color set

The Screen Color Set menu enables you change the color scheme of your system by pressing the OK key.

AUDIO



The Digital Satellite Receiver enables you to set the preferred audio track to be used when the program supports the selected audio language. The default audio language choices are English, Spanish, French, German, Italian, Japanese, Korean and Chinese.

TRANSLUCENCY



You can choose the translucency level of channel banner and information banner, displays screen. Highlight the Translucency item and press the OK key. Choose the translucency level using the ▲/▼ keys.

TIMERS

Setting a timer causes the receiver to tune to the set channel at the set time and date.

Timer ID

You can set 8 timers. Select the timer ID by using the OK key continuously.

Turn on channel

Select the channel the timer should tune. Enter the channel number using 0 - 9 keys.

Starting date



You can select the first date the timer will make an effect. Highlight the day, month and year using the ◀/▶ keys and press the OK key continuously to change the day, month and year.

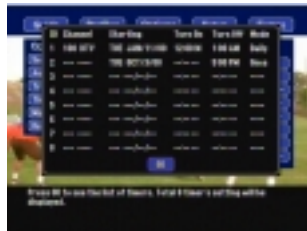
Turn on/off time

You can set the time when the Digital Satellite Receiver will turn on or off. Use the OK key or the 0 – 9 keys to edit.

Timer mode

You can set the timer to perform Once, Weekly and Daily by adjusting the timer mode with the OK key.

View all timer



Highlight View and press the OK key to display a summary set timers.

MAIL BOX



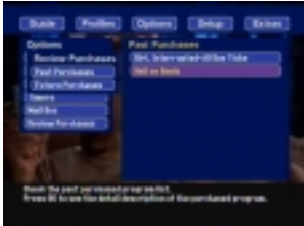
Your service provider may send you mail messages upcoming special events, offers, and promotional programs. When a mail message arrives, the mail icon will appear in the channel banner. To view the mail

message, highlight Mail Box item in the Option menu and press the OK key. Select the mail message using ▲/▼keys and press the OK key to read the message.

REVIEW PURCHASES

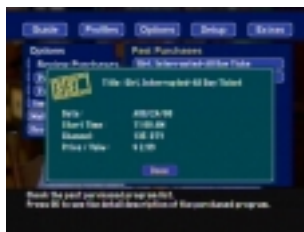
The Review Purchases menu displays past and future PPV programs that have been purchased.

Past purchases



Open the Past Purchase menu and select past purchases to review your viewed purchase history.

Future purchases



Displays the information about the future purchases.

Setup

SET DISH

Use this menu to properly install your satellite dish antenna.

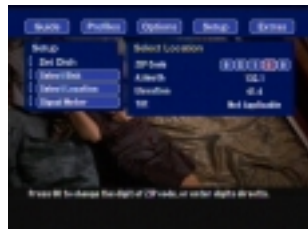
Select dish



Use the selected dish menu item to set the dish type properly. Select the dish type connected to the Digital Satellite Receiver by pressing the OK key. The dish type choices are round dish, oval dish-2 satellite

locations, and oval dish-3 satellite locations.

Select location



To optimize reception of the satellite signal, your dish must be properly pointed at the satellites in the sky. To help point the dish, use the Select Area menu. The Select Area menu asks for the zip code of your area.

After entering it using the 0 - 9 keys, the azimuth, elevation and tilt values for pointing your dish will displayed. For more information about the installation of your dish, refer to its the installation manual.

Signal meter



The Signal Meter menu shows the strength of the received satellite signal.

You can check the signal strength by selecting a Satellite and a Transponder. Try to get the highest signal strength, because otherwise you may experience negative effects, "rain fade," in rain or snow.

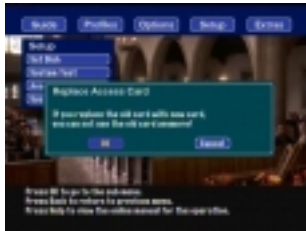
SYSTEM TEST



The System Test menu check whether the Digital Satellite Receiver is operating normally or not. This screen verifies your satellite signal, satellite tuner, access card, and telephone connection are functioning

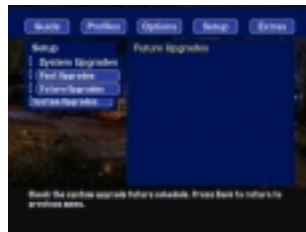
properly. The test displays the electronic serial number of your Digital Satellite Receiver and the access card ID number.

ACCESS CARD



Occasionally DIRECTV will issue you a replacement access card. To replace it, select the access card menu item and follow the instructions.

SYSTEM UPGRADES



Your Digital Satellite Receiver is able to receive upgrades or modifications to some of its features and functions. These modifications will occur automatically, usually at times when the receiver would

likely be turned off. If your receiver is on when an upgrade or modification is sent, you may experience disruption in reception for a minute or two. Your reception should return to normal after the modification is complete. Your receiver must be plugged in to receive an upgrade. Do not unplug your receiver while an upgrade is in progress. Please consult the Upgrade menu to find a schedule of upgrades or modifications planned by DIRECTV.

Extras

CALENDAR



Use the ▲/▼ keys to change the years and the ◀/▶ keys to change the month.

BIORHYTHM



Use the Biorhythm to find your daily physical, emotional, intellectual and inspirational status. Highlight the digit and enter the number using 0 -9 keys.

Warranty

LIMITED WARRANTY

Samsung Electronics America, Inc. (hereafter referred to as SEA), warrants that this product is free from defective material and workmanship.

SEA further warrants that if this products fails to operate properly within the specified warranty period and the failure is due to improper workmanship of defective material, SEA will repair or replace the product at it's option.

All warranty repairs must be performed by a SEA authorized Service Center.(The name and address of the location nearest you can be obtained by calling toll free: 1-800SAMSUNG)

LABOR	PART
1 YEAR(CARRY-IN)	1 YEAR

On carry-in models, transportation to and from the service center is the customer's responsibility. The original dated sales receipt must be retained by the customer and is the only acceptable proof of purchase. It must be presented to the authorized service center at the time service is requested.

EXCLUSION

This warranty does not cover damage due to accident, fire, flood and/or other acts of God; misuse, incorrect line voltage, improper installation improper or unauthorized repairs, commercial use, or damage that occurs

in shipping. Exterior and interior finish are not covered under this warranty. Customer adjustments which are explained in the in the owner's manual are not covered under the terms of this warranty. This warranty will automatically be voided for any unit found with a missing or altered serial number. This warranty is valid only on products purchased and used in the United States.

Some states do not allow the exclusion or limitaions of incidental or consequential damages, or allow limitaions on how long an implied warranty lasts, so the above limitation or exclusions may not apply to you. This warranty gives you specific legal rights and you may also have other rights which vary from sate to state.

SAMSUNG CONSUMER AFFAIRS
SAMSUNG ELECTRONICS AMERICA INC.
ONE SAMSUNG PLACE LEDGEWOOD, NJ, 07852