



It should not be reproduced except in full, without the written approval of ONETECH.

FCC-003 (Rev.0)

**HEAD OFFICE** : #505 SK APT. Factory 223-28, Sangdaewon 1 Dong, Jungwon-Gu, Seongnam-City, Kyunggi-Do, 462-705, Korea  
(TEL: +82-31-746-8500, FAX: +82-31-746-8700)

**EMC Testing Dept** : 426-1 Daessangryung-Ri, Chowol-Eup, Kwangju-City, Kyunggi-Do, 464-860, Korea. (TEL: +82-31-765-8289, FAX: +82-31-766-2904)

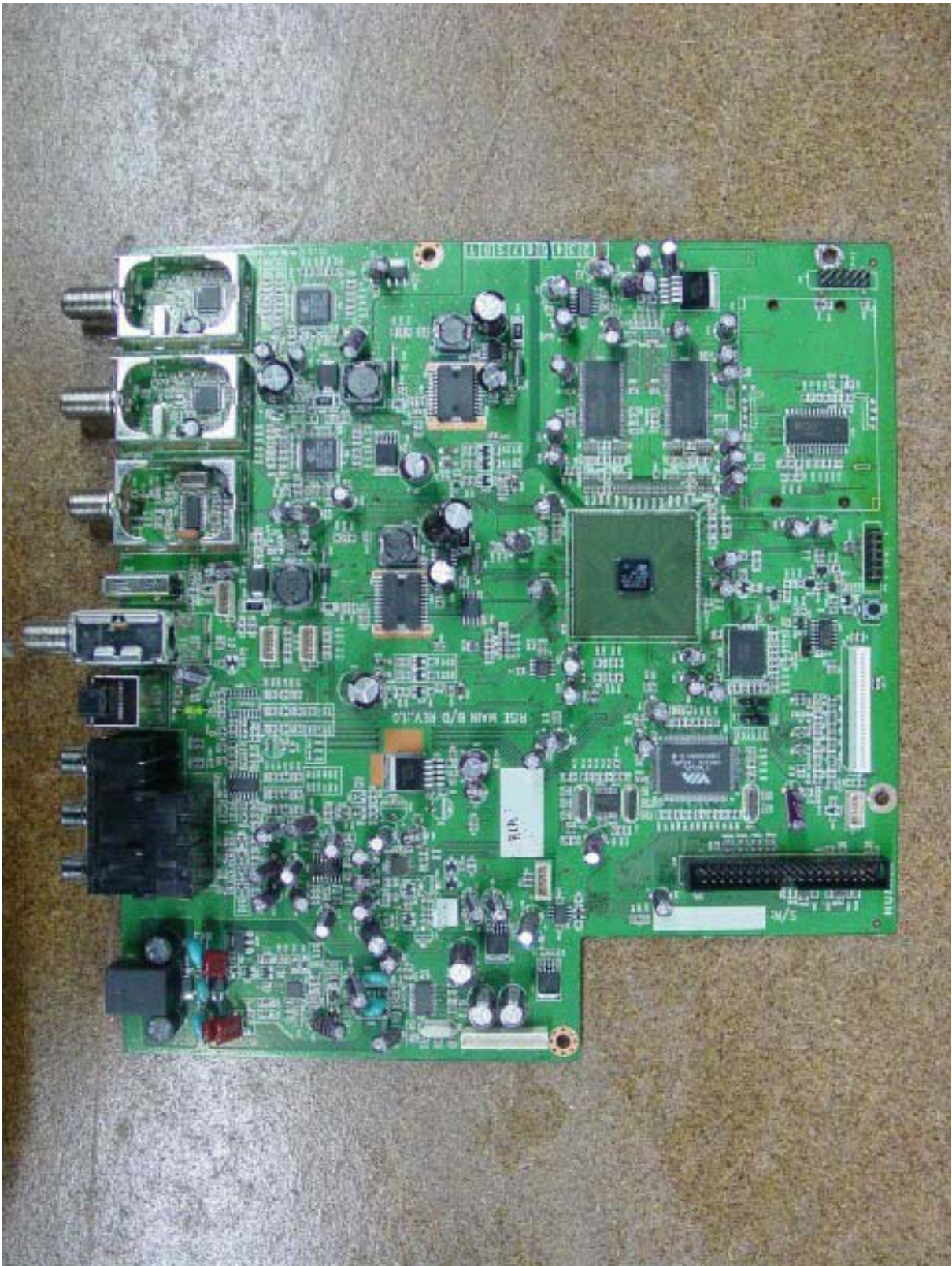


It should not be reproduced except in full, without the written approval of ONETECH.

FCC-003 (Rev.0)

**HEAD OFFICE** : #505 SK APT. Factory 223-28, Sangdaewon 1 Dong, Jungwon-Gu, Seongnam-City, Kyunggi-Do, 462-705, Korea  
(TEL: +82-31-746-8500, FAX: +82-31-746-8700)

**EMC Testing Dept** : 426-1 Daessangryung-Ri, Chowol-Eup, Kwangju-City, Kyunggi-Do, 464-860, Korea. (TEL: +82-31-765-8289, FAX: +82-31-766-2904)

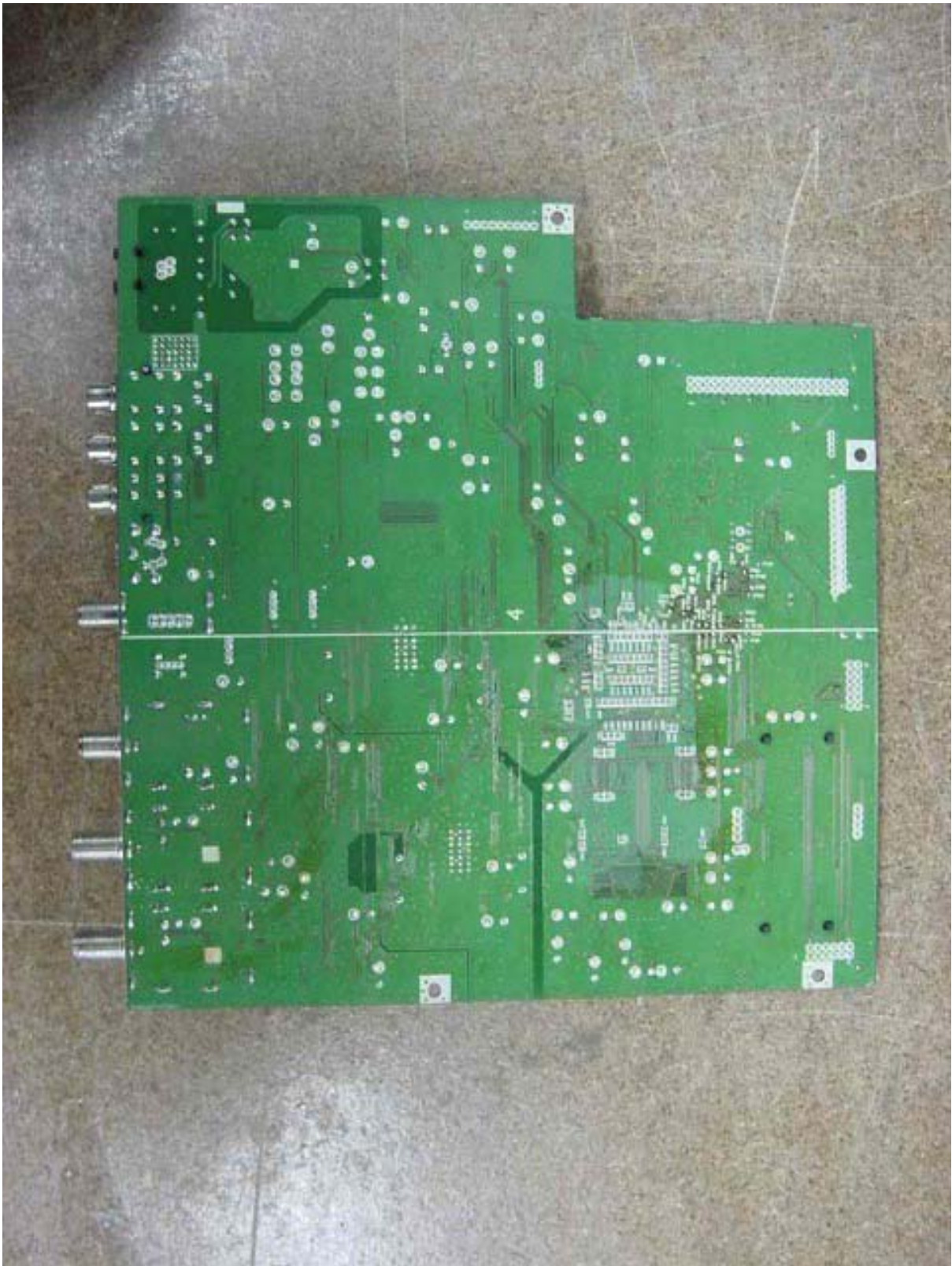


It should not be reproduced except in full, without the written approval of ONETECH.

FCC-003 (Rev.0)

**HEAD OFFICE** : #505 SK APT. Factory 223-28, Sangdaewon 1 Dong, Jungwon-Gu, Seongnam-City, Kyunggi-Do, 462-705, Korea  
(TEL: +82-31-746-8500, FAX: +82-31-746-8700)

**EMC Testing Dept** : 426-1 Daessangryung-Ri, Chowol-Eup, Kwangju-City, Kyunggi-Do, 464-860, Korea. (TEL: +82-31-765-8289, FAX: +82-31-766-2904)

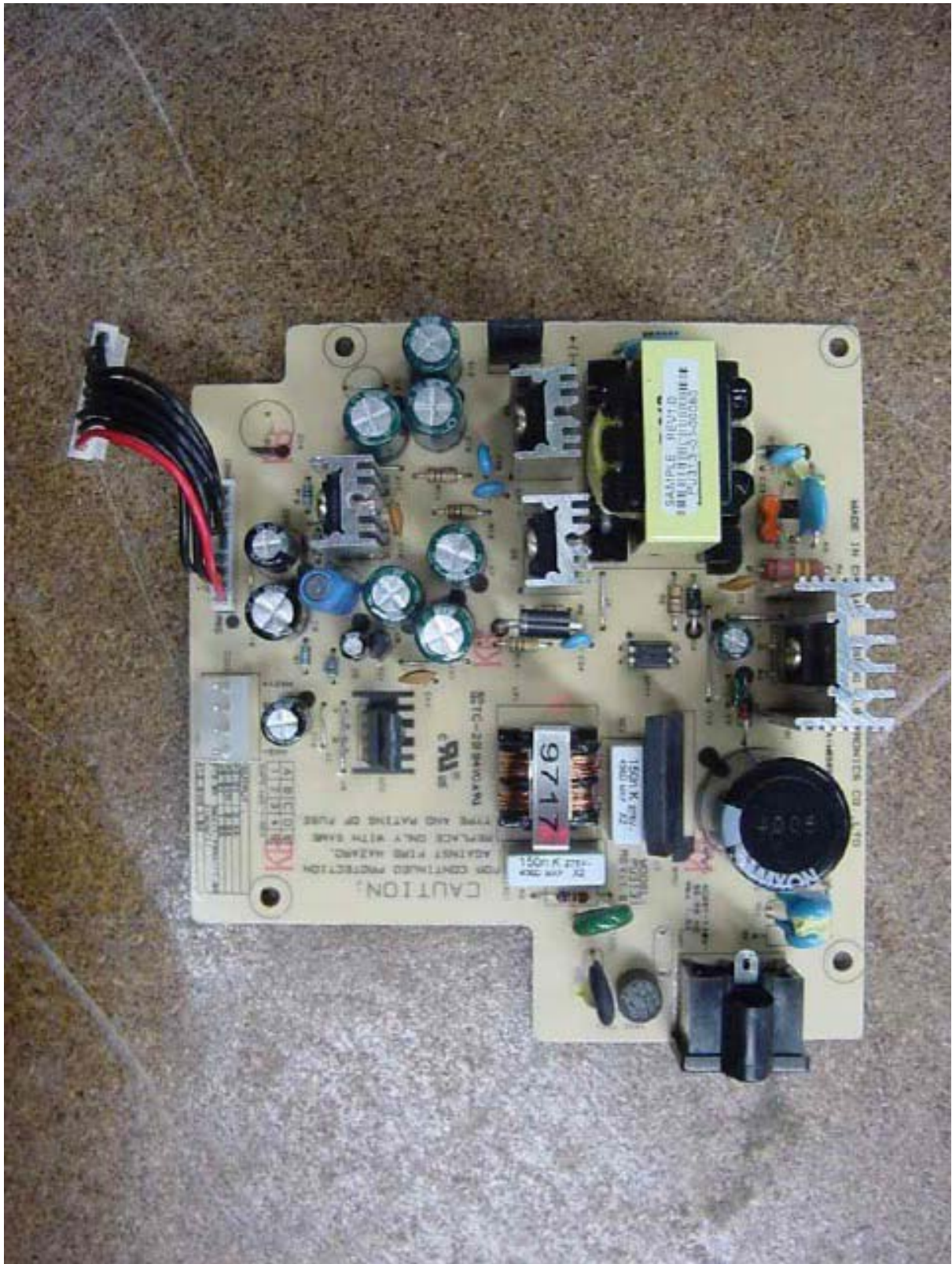


It should not be reproduced except in full, without the written approval of ONETECH.

FCC-003 (Rev.0)

**HEAD OFFICE** : #505 SK APT. Factory 223-28, Sangdaewon 1 Dong, Jungwon-Gu, Seongnam-City, Kyunggi-Do, 462-705, Korea  
(TEL: +82-31-746-8500, FAX: +82-31-746-8700)

**EMC Testing Dept** : 426-1 Daessangryung-Ri, Chowol-Eup, Kwangju-City, Kyunggi-Do, 464-860, Korea. (TEL: +82-31-765-8289, FAX: +82-31-766-2904)



It should not be reproduced except in full, without the written approval of ONETECH.

FCC-003 (Rev.0)

**HEAD OFFICE** : #505 SK APT. Factory 223-28, Sangdaewon 1 Dong, Jungwon-Gu, Seongnam-City, Kyunggi-Do, 462-705, Korea  
(TEL: +82-31-746-8500, FAX: +82-31-746-8700)

**EMC Testing Dept** : 426-1 Daessangryung-Ri, Chowol-Eup, Kwangju-City, Kyunggi-Do, 464-860, Korea. (TEL: +82-31-765-8289, FAX: +82-31-766-2904)

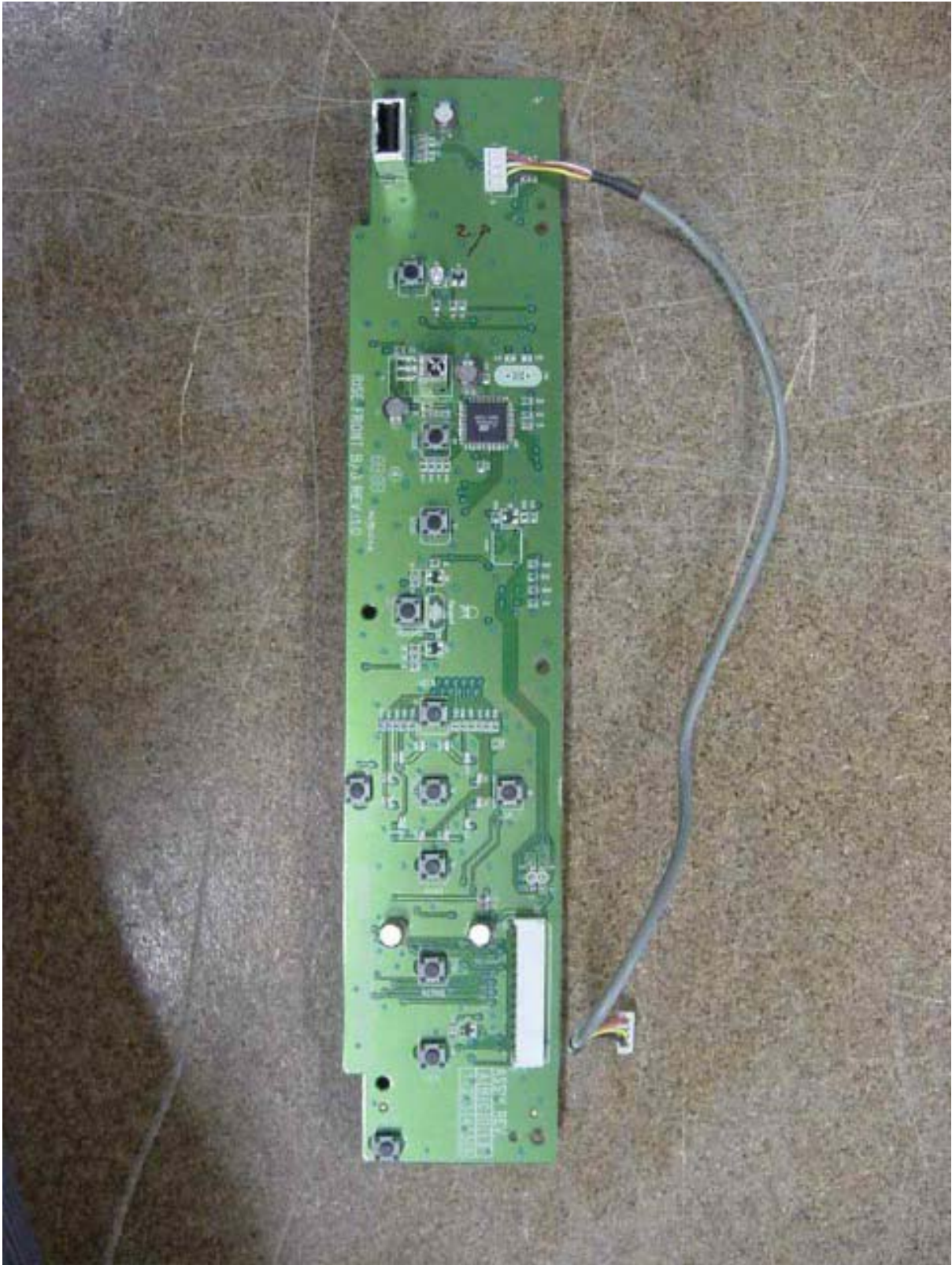


It should not be reproduced except in full, without the written approval of ONETECH.

FCC-003 (Rev.0)

**HEAD OFFICE** : #505 SK APT. Factory 223-28, Sangdaewon 1 Dong, Jungwon-Gu, Seongnam-City, Kyunggi-Do, 462-705, Korea  
(TEL: +82-31-746-8500, FAX: +82-31-746-8700)

**EMC Testing Dept** : 426-1 Daessangryung-Ri, Chowol-Eup, Kwangju-City, Kyunggi-Do, 464-860, Korea. (TEL: +82-31-765-8289, FAX: +82-31-766-2904)

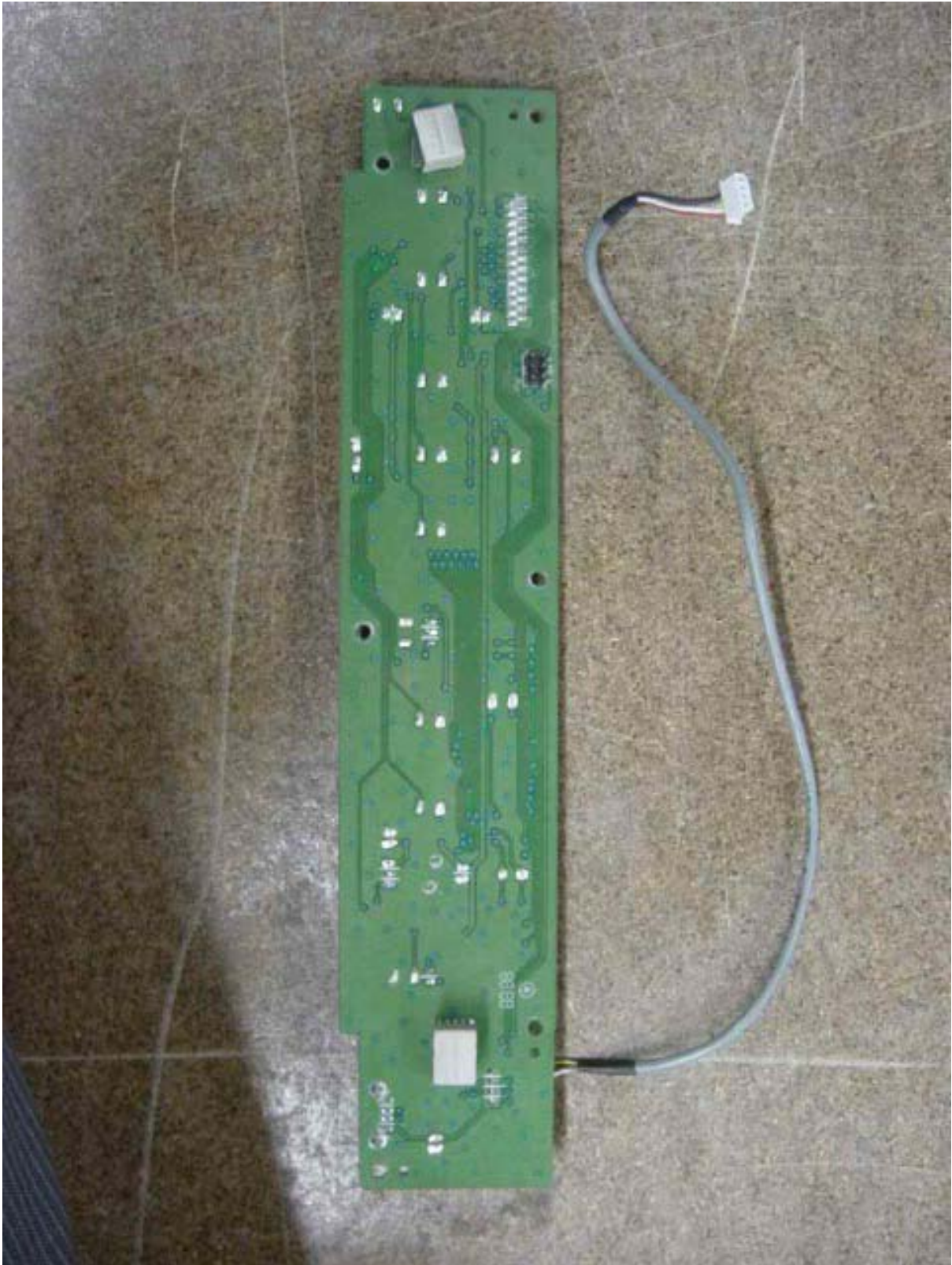


It should not be reproduced except in full, without the written approval of ONETECH.

FCC-003 (Rev.0)

**HEAD OFFICE** : #505 SK APT. Factory 223-28, Sangdaewon 1 Dong, Jungwon-Gu, Seongnam-City, Kyunggi-Do, 462-705, Korea  
(TEL: +82-31-746-8500, FAX: +82-31-746-8700)

**EMC Testing Dept** : 426-1 Daessangryung-Ri, Chowol-Eup, Kwangju-City, Kyunggi-Do, 464-860, Korea. (TEL: +82-31-765-8289, FAX: +82-31-766-2904)



It should not be reproduced except in full, without the written approval of ONETECH.

FCC-003 (Rev.0)

**HEAD OFFICE** : #505 SK APT. Factory 223-28, Sangdaewon 1 Dong, Jungwon-Gu, Seongnam-City, Kyunggi-Do, 462-705, Korea  
(TEL: +82-31-746-8500, FAX: +82-31-746-8700)

**EMC Testing Dept** : 426-1 Daessangryung-Ri, Chowol-Eup, Kwangju-City, Kyunggi-Do, 464-860, Korea. (TEL: +82-31-765-8289, FAX: +82-31-766-2904)





It should not be reproduced except in full, without the written approval of ONETECH.

FCC-003 (Rev.0)

**HEAD OFFICE** : #505 SK APT. Factory 223-28, Sangdaewon 1 Dong, Jungwon-Gu, Seongnam-City, Kyunggi-Do, 462-705, Korea  
(TEL: +82-31-746-8500, FAX: +82-31-746-8700)

**EMC Testing Dept** : 426-1 Daessangryung-Ri, Chowol-Eup, Kwangju-City, Kyunggi-Do, 464-860, Korea. (TEL: +82-31-765-8289, FAX: +82-31-766-2904)

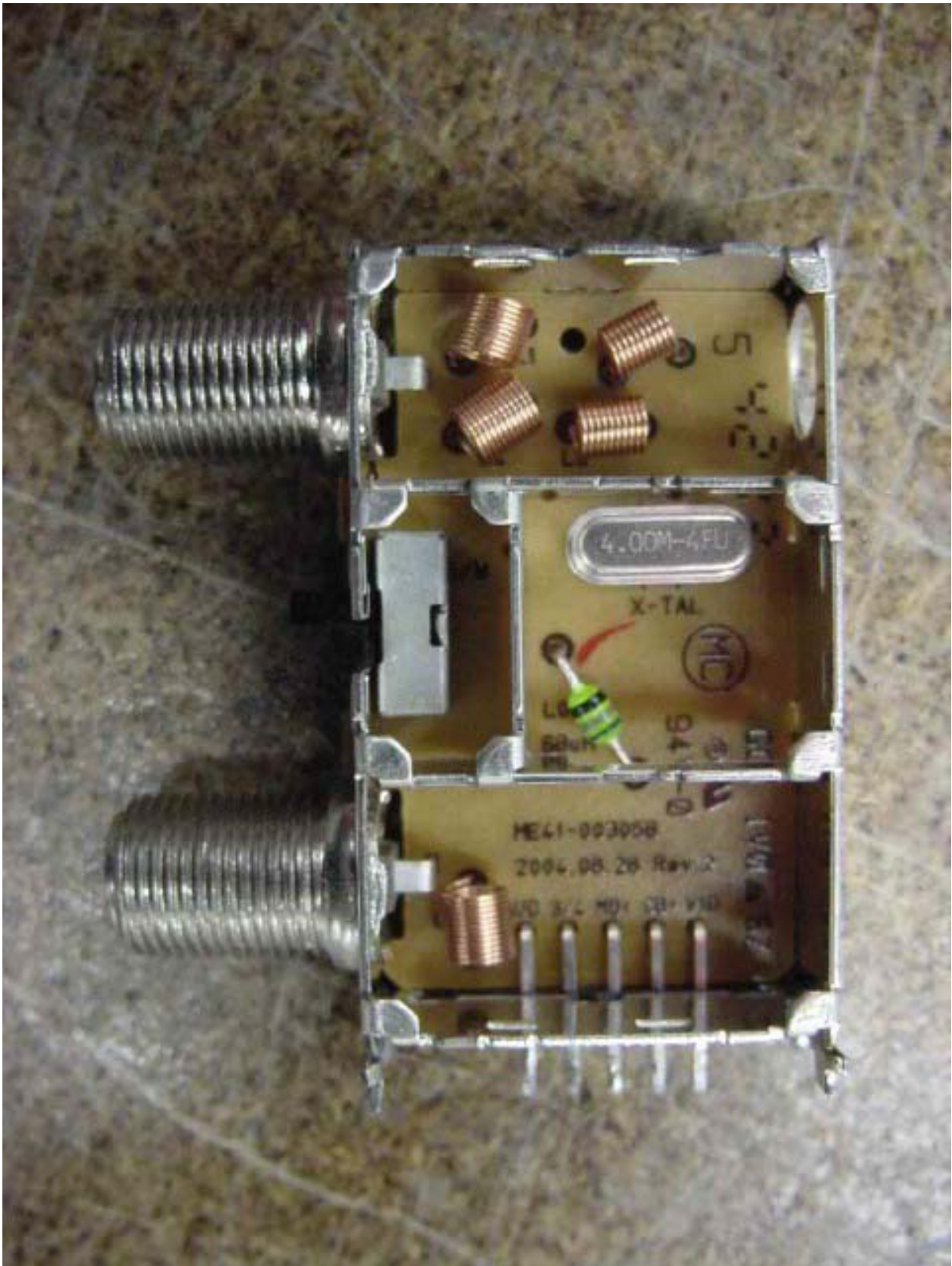


It should not be reproduced except in full, without the written approval of ONETECH.

FCC-003 (Rev.0)

**HEAD OFFICE** : #505 SK APT. Factory 223-28, Sangdaewon 1 Dong, Jungwon-Gu, Seongnam-City, Kyunggi-Do, 462-705, Korea  
(TEL: +82-31-746-8500, FAX: +82-31-746-8700)

**EMC Testing Dept** : 426-1 Daessangryung-Ri, Chowol-Eup, Kwangju-City, Kyunggi-Do, 464-860, Korea. (TEL: +82-31-765-8289, FAX: +82-31-766-2904)

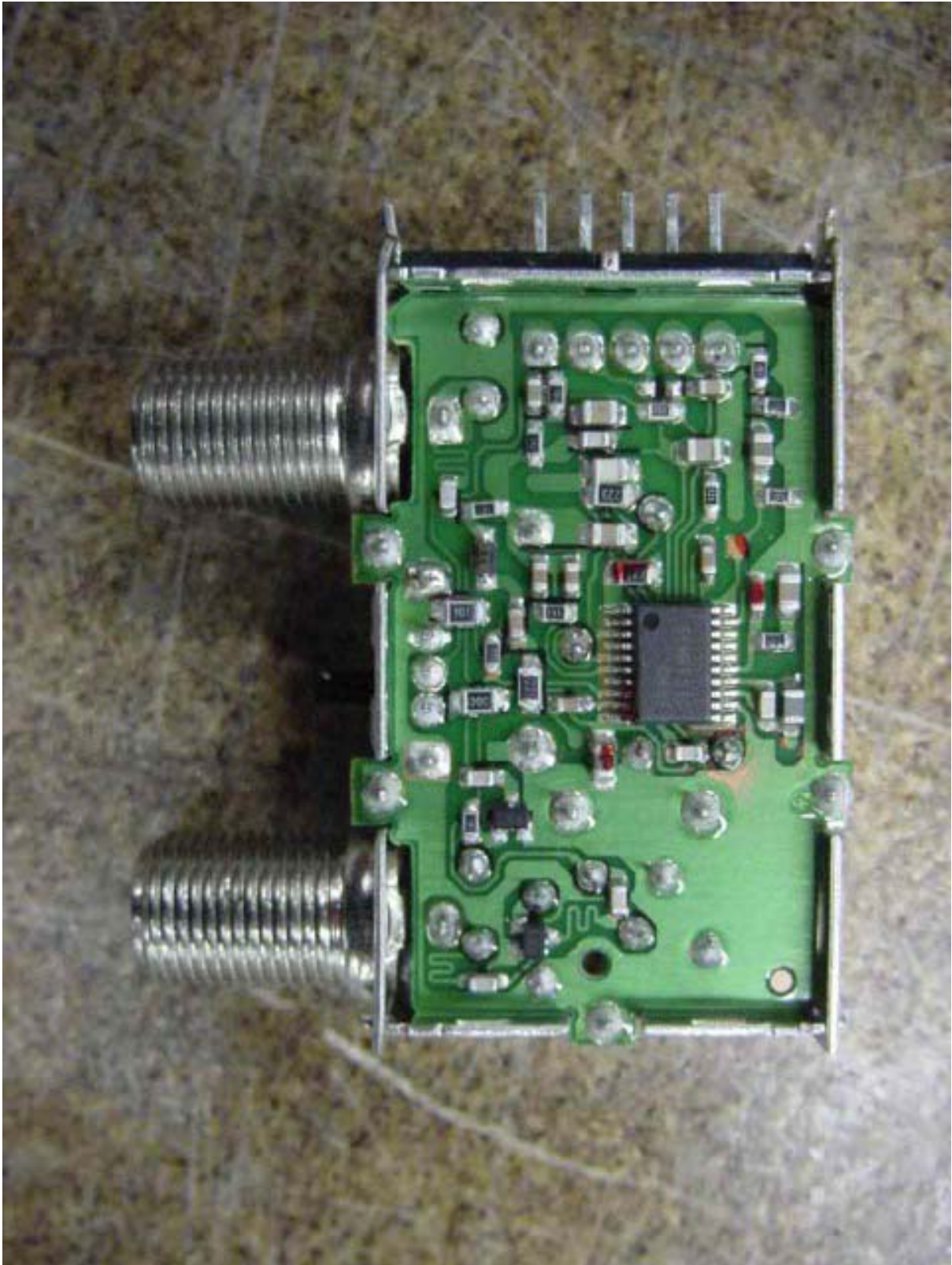


It should not be reproduced except in full, without the written approval of ONETECH.

FCC-003 (Rev.0)

**HEAD OFFICE** : #505 SK APT. Factory 223-28, Sangdaewon 1 Dong, Jungwon-Gu, Seongnam-City, Kyunggi-Do, 462-705, Korea  
(TEL: +82-31-746-8500, FAX: +82-31-746-8700)

**EMC Testing Dept** : 426-1 Daessangryung-Ri, Chowol-Eup, Kwangju-City, Kyunggi-Do, 464-860, Korea. (TEL: +82-31-765-8289, FAX: +82-31-766-2904)



It should not be reproduced except in full, without the written approval of ONETECH.

FCC-003 (Rev.0)

**HEAD OFFICE** : #505 SK APT. Factory 223-28, Sangdaewon 1 Dong, Jungwon-Gu, Seongnam-City, Kyunggi-Do, 462-705, Korea  
(TEL: +82-31-746-8500, FAX: +82-31-746-8700)

**EMC Testing Dept** : 426-1 Daessangryung-Ri, Chowol-Eup, Kwangju-City, Kyunggi-Do, 464-860, Korea. (TEL: +82-31-765-8289, FAX: +82-31-766-2904)



U Series 9  
160 Gbytes

Model: ST3160222ACE  
S/N: S4S29274  
P/N: 9W6C24-779  
HDA P/N: 100275632  
Config: YCF-01  
Firmware: 7.05  
Date Code: 04012      Site Code: WU

Seagate   
ULTRA   
+5V 0.72A  
+12V 0.35A  
中国产品  
Product of China  
E-HQ11-03-005(E)

Caution: Product warranty is void if any seal or label is removed, or if the drive experiences shock in excess of 350 Gs.

This drive is manufactured by Seagate for OEM distribution. For product information or technical support, please contact your system OEM.

**Installation Summary**

- For easy installation use Seagate's DiscWizard™ software, available at [www.seagate.com/support](http://www.seagate.com/support), otherwise use standard installation.
1. Set the jumper to Cable Select if using drive ATA cable, cable position determines Master (black connector) or Slave (gray). For older cables, set one drive as a Master and the other as a Slave.
  2. Mount the drive using four screws per side. Do not over tighten the screws.
  3. Install the power and data cables.
  4. Run your computer BIOS/system setup program. Select the Auto-detect option and enable Logical Block Addressing (LBA). Save and Exit the setup program.
  5. Prepare the drive for use with your Operating System. See your OS instructions for details. Be careful to select the correct drive. Always backup critical data before making system changes. Windows XP or 2000 prepare the drive during install phase. Windows ME or 98 use FDISK and Format commands. Macintosh uses Drive Setup in the Utilities folder.



It should not be reproduced except in full, without the written approval of ONETECH. FCC-003 (Rev.0)

HEAD OFFICE : #505 SK APT. Factory 223-28, Sangdaewon 1 Dong, Jungwon-Gu, Seongnam-City, Kyunggi-Do, 462-705, Korea (TEL: +82-31-746-8500, FAX: +82-31-746-8700)

EMC Testing Dept : 426-1 Daessangryung-Ri, Chowol-Eup, Kwangju-City, Kyunggi-Do, 464-860, Korea. (TEL: +82-31-765-8289, FAX: +82-31-766-2904)