

# **Internal photos of EUT**

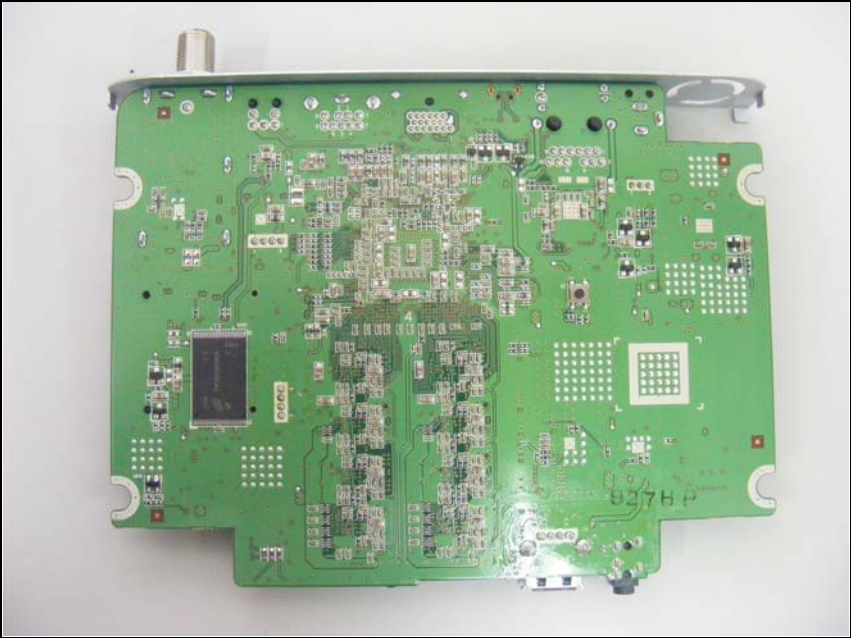
***Inner view of EUT***



**Top view of Main PCB**



**Bottom view of Main PCB**



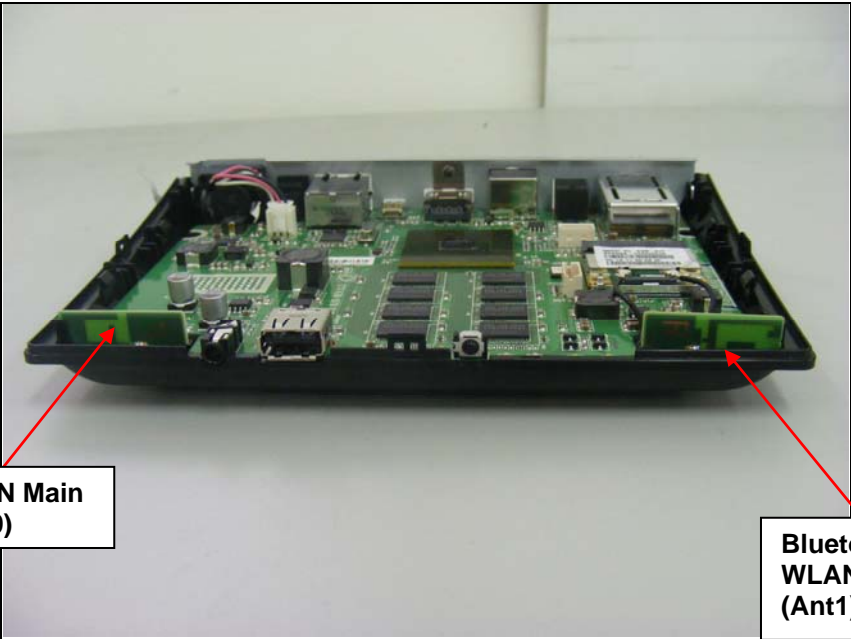
**Top view of WLAN and BT module**



**Bottom view of WLAN and BT module**



***Top view of WLAN and BT antenna***



**WLAN Main  
(Ant0)**

**Bluetooth  
WLAN Aux  
(Ant1)**