

It should not be reproduced except in full, without the written approval of ONETECH.

FCC-003 (Rev.0)

**HEAD OFFICE** : #505 SK APT. Factory 223-28, Sangdaewon 1 Dong, Jungwon-Gu, Seongnam-City, Kyunggi-Do, 462-121, Korea  
(TEL: +82-31-746-8500, FAX: +82-31-746-8700)

**EMC Testing Dept** : 426-1 Daessangryung-Ri, Chowol-Myun, Kwangju-City, Kyunggi-Do 464-860 Korea. (TEL: +82-31-765-8289, FAX: +82-31-766-2904)

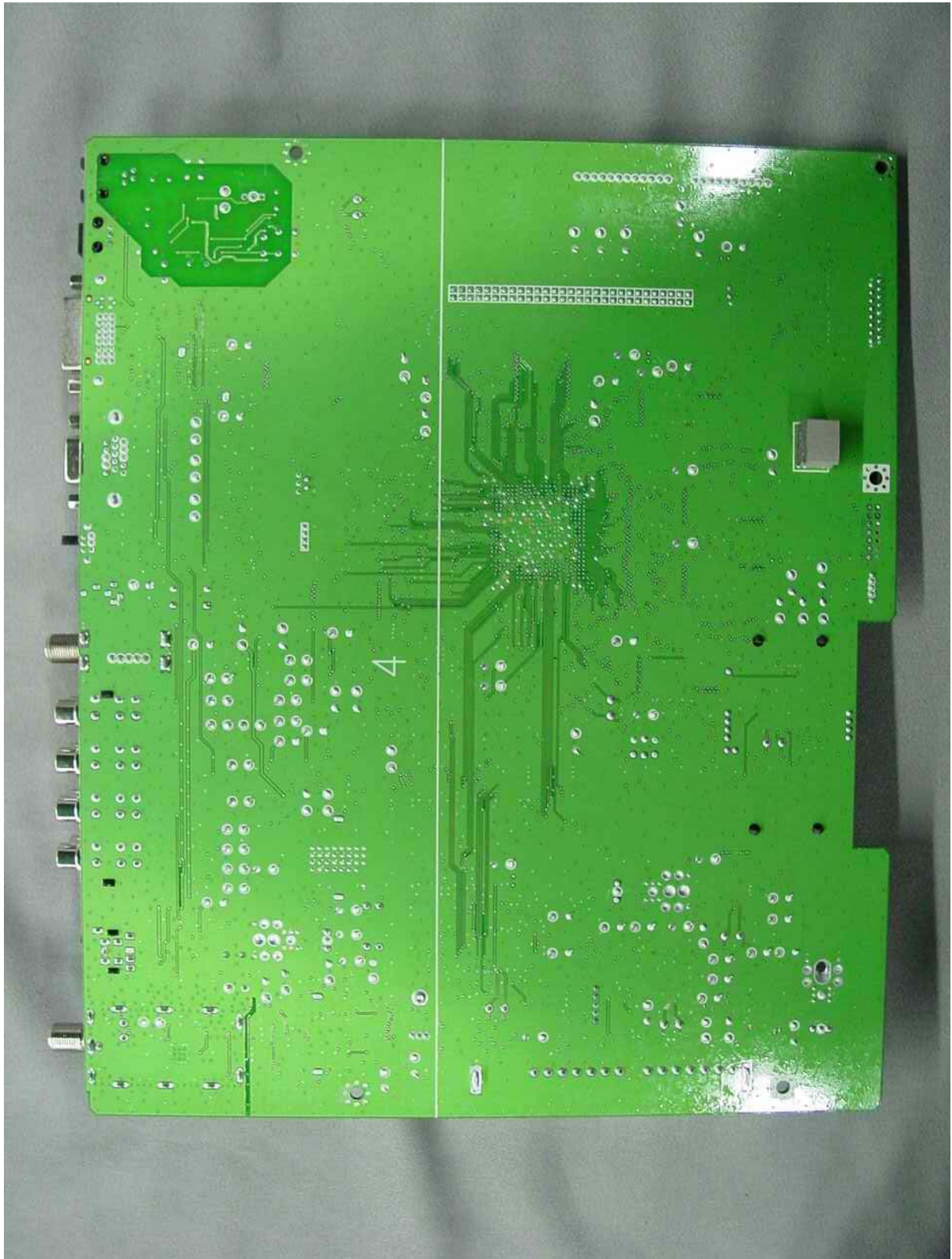


It should not be reproduced except in full, without the written approval of ONETECH.

FCC-003 (Rev.0)

**HEAD OFFICE** : #505 SK APT. Factory 223-28, Sangdaewon 1 Dong, Jungwon-Gu, Seongnam-City, Kyunggi-Do, 462-121, Korea  
(TEL: +82-31-746-8500, FAX: +82-31-746-8700)

**EMC Testing Dept** : 426-1 Daessangryung-Ri, Chowol-Myun, Kwangju-City, Kyunggi-Do 464-860 Korea. (TEL: +82-31-765-8289, FAX: +82-31-766-2904)





# ONETECH

Testing & Evaluation Lab.

FCC ID. : O6ZDTZ210

File No. : E042R-038



It should not be reproduced except in full, without the written approval of ONETECH.

FCC-003 (Rev.0)

**HEAD OFFICE** : #505 SK APT. Factory 223-28, Sangdaewon 1 Dong, Jungwon-Gu, Seongnam-City, Kyunggi-Do, 462-121, Korea  
(TEL: +82-31-746-8500, FAX: +82-31-746-8700)

**EMC Testing Dept** : 426-1 Daessangryung-Ri, Chowol-Myun, Kwangju-City, Kyunggi-Do 464-860 Korea. (TEL: +82-31-765-8289, FAX: +82-31-766-2904)

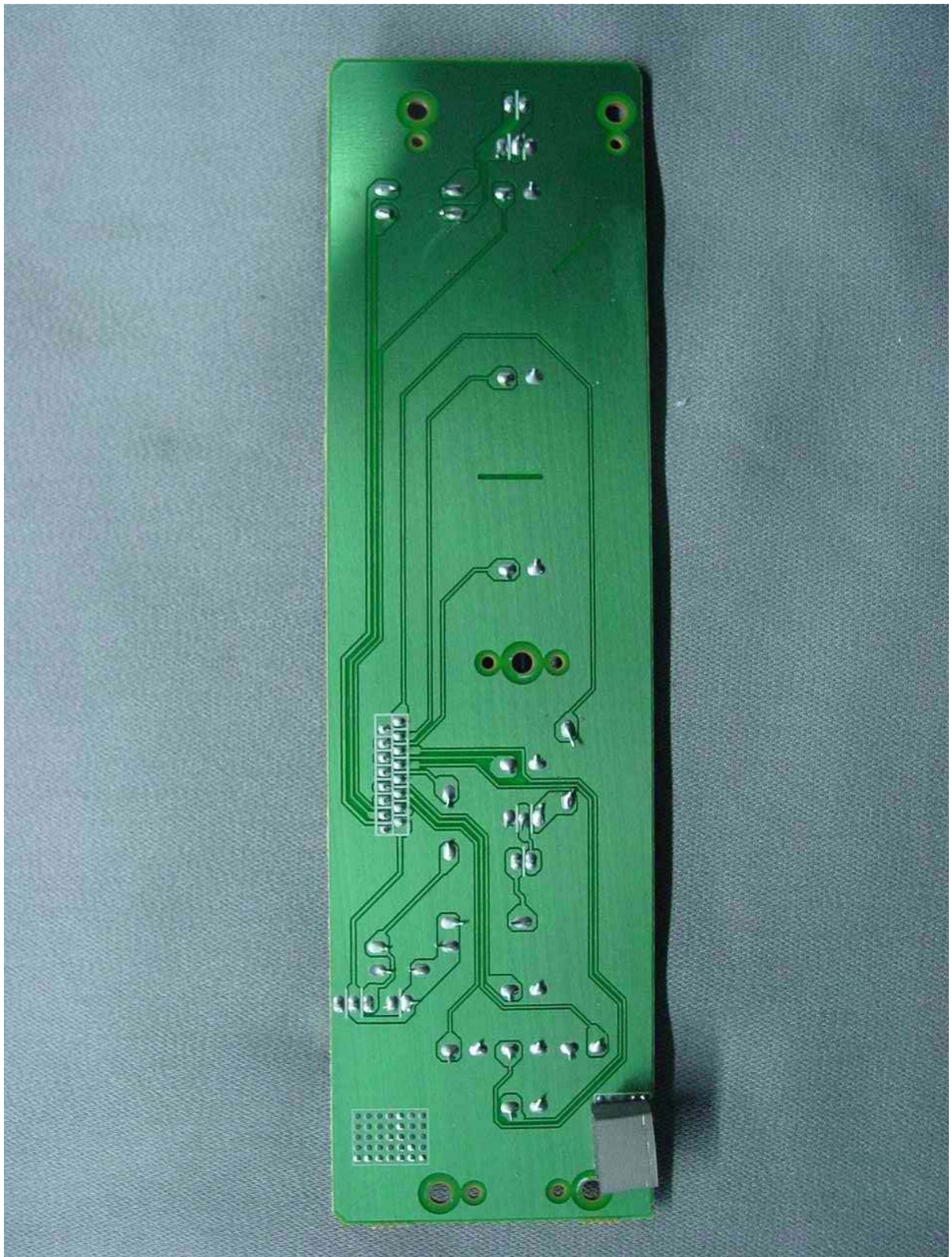


# ONETECH

Testing & Evaluation Lab.

FCC ID. : O6ZDTZ210

File No. : E042R-038

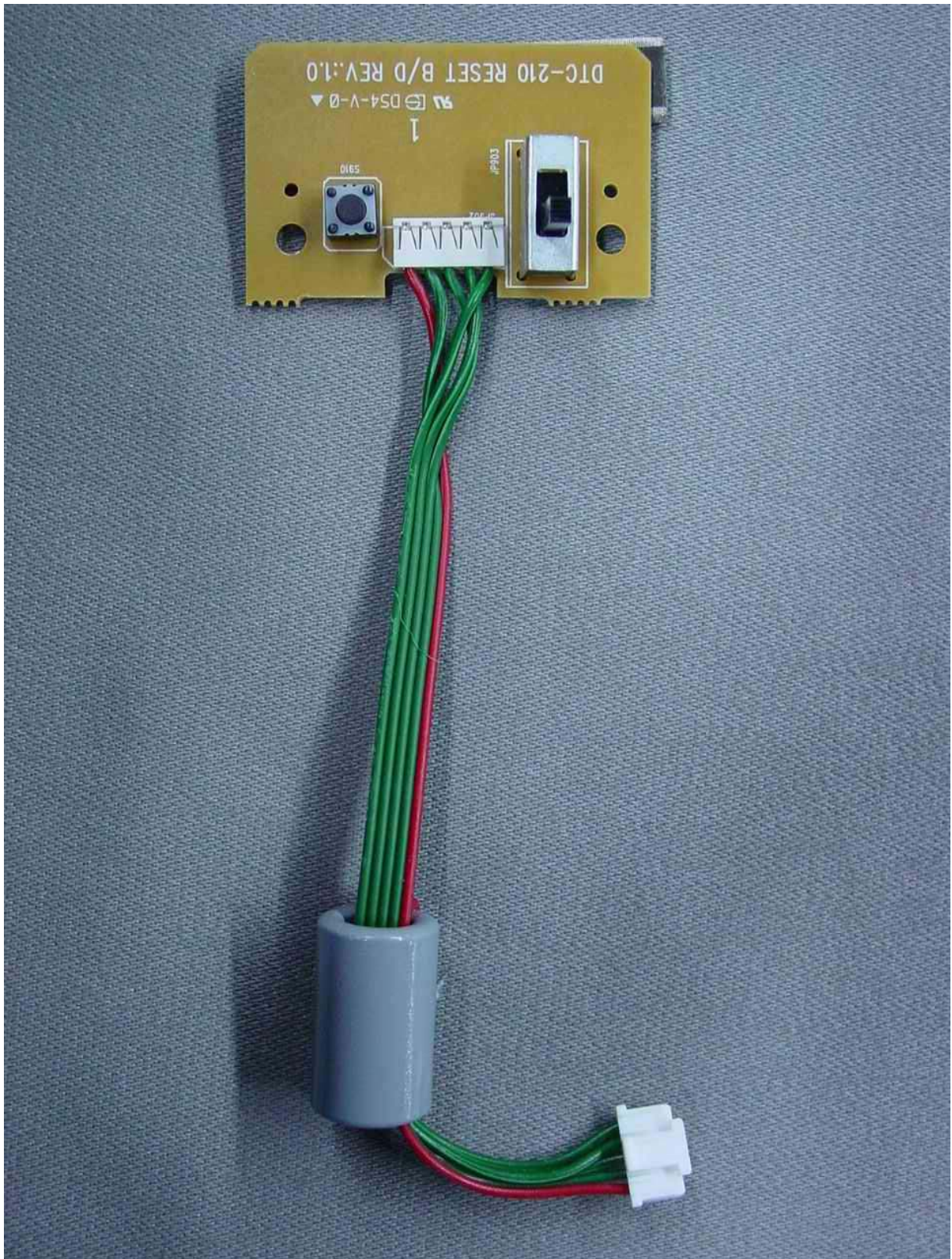


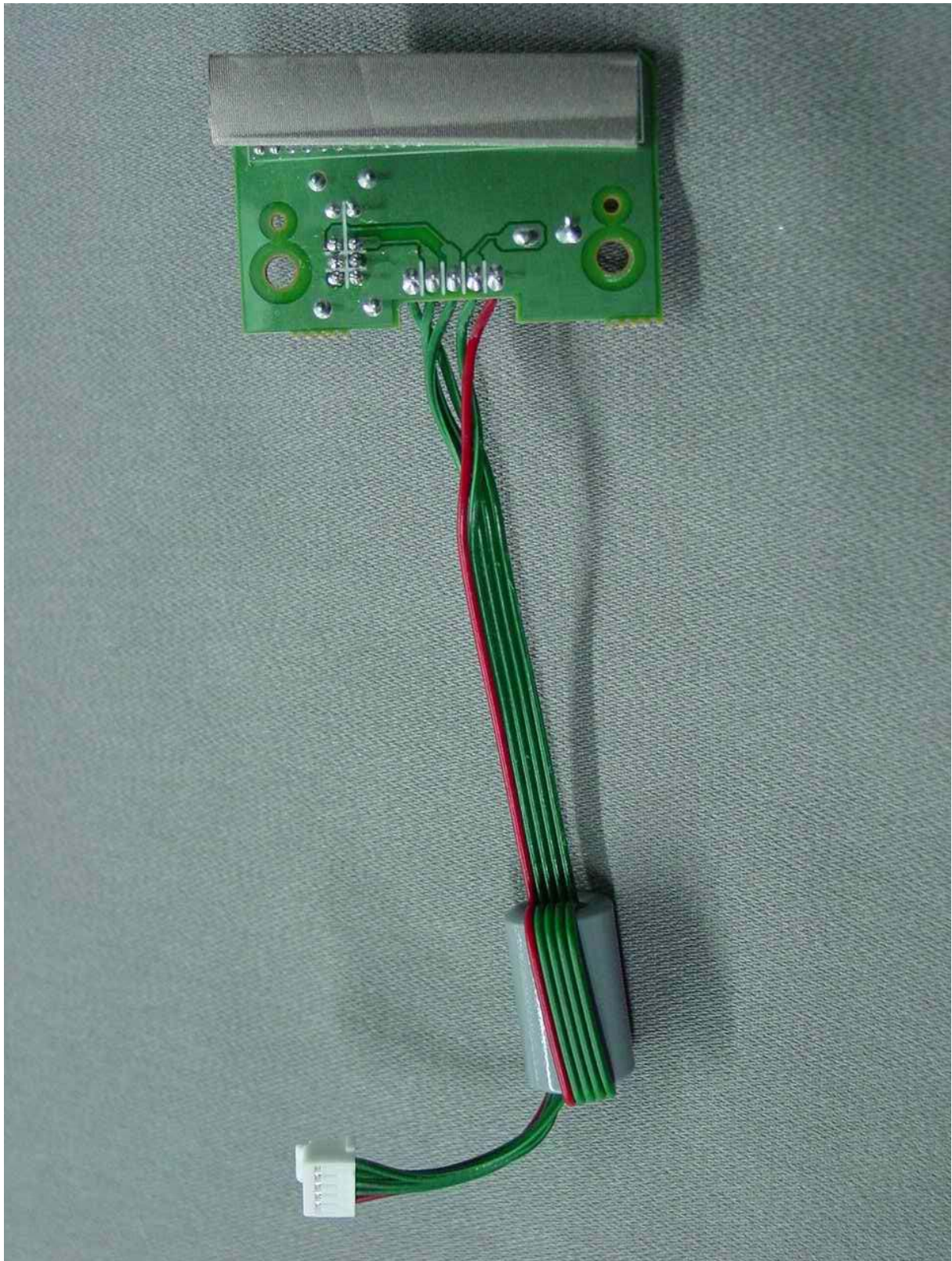
It should not be reproduced except in full, without the written approval of ONETECH.

FCC-003 (Rev.0)

**HEAD OFFICE** : #505 SK APT. Factory 223-28, Sangdaewon 1 Dong, Jungwon-Gu, Seongnam-City, Kyunggi-Do, 462-121, Korea  
(TEL: +82-31-746-8500, FAX: +82-31-746-8700)

**EMC Testing Dept** : 426-1 Daessangryung-Ri, Chowol-Myun, Kwangju-City, Kyunggi-Do 464-860 Korea. (TEL: +82-31-765-8289, FAX: +82-31-766-2904)





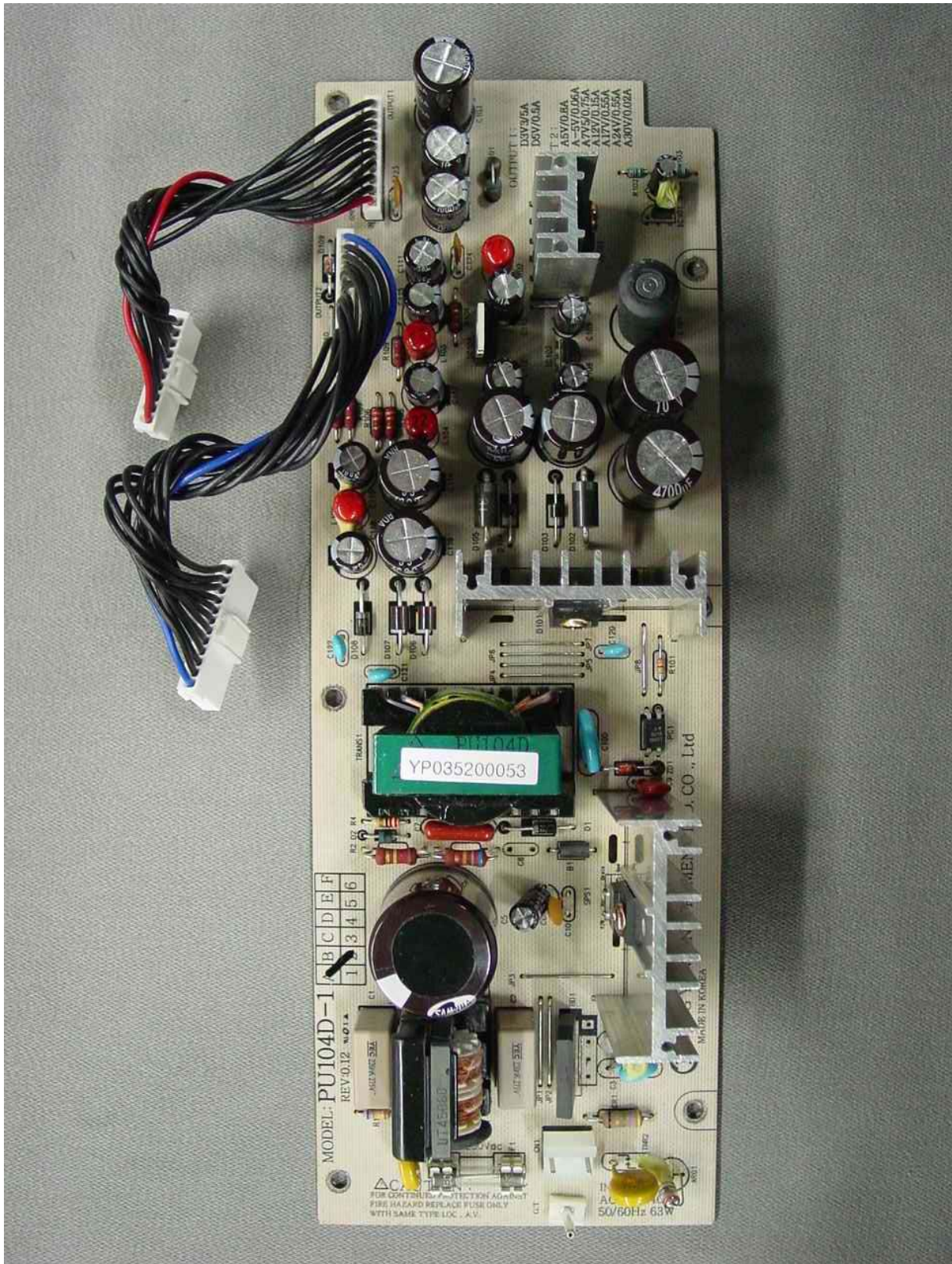


# ONETECH

Testing & Evaluation Lab.

FCC ID. : O6ZDTZ210

File No. : E042R-038



It should not be reproduced except in full, without the written approval of ONETECH.

FCC-003 (Rev.0)

**HEAD OFFICE** : #505 SK APT. Factory 223-28, Sangdaewon 1 Dong, Jungwon-Gu, Seongnam-City, Kyunggi-Do, 462-121, Korea  
(TEL: +82-31-746-8500, FAX: +82-31-746-8700)

**EMC Testing Dept** : 426-1 Daessangryung-Ri, Chowol-Myun, Kwangju-City, Kyunggi-Do 464-860 Korea. (TEL: +82-31-765-8289, FAX: +82-31-766-2904)



