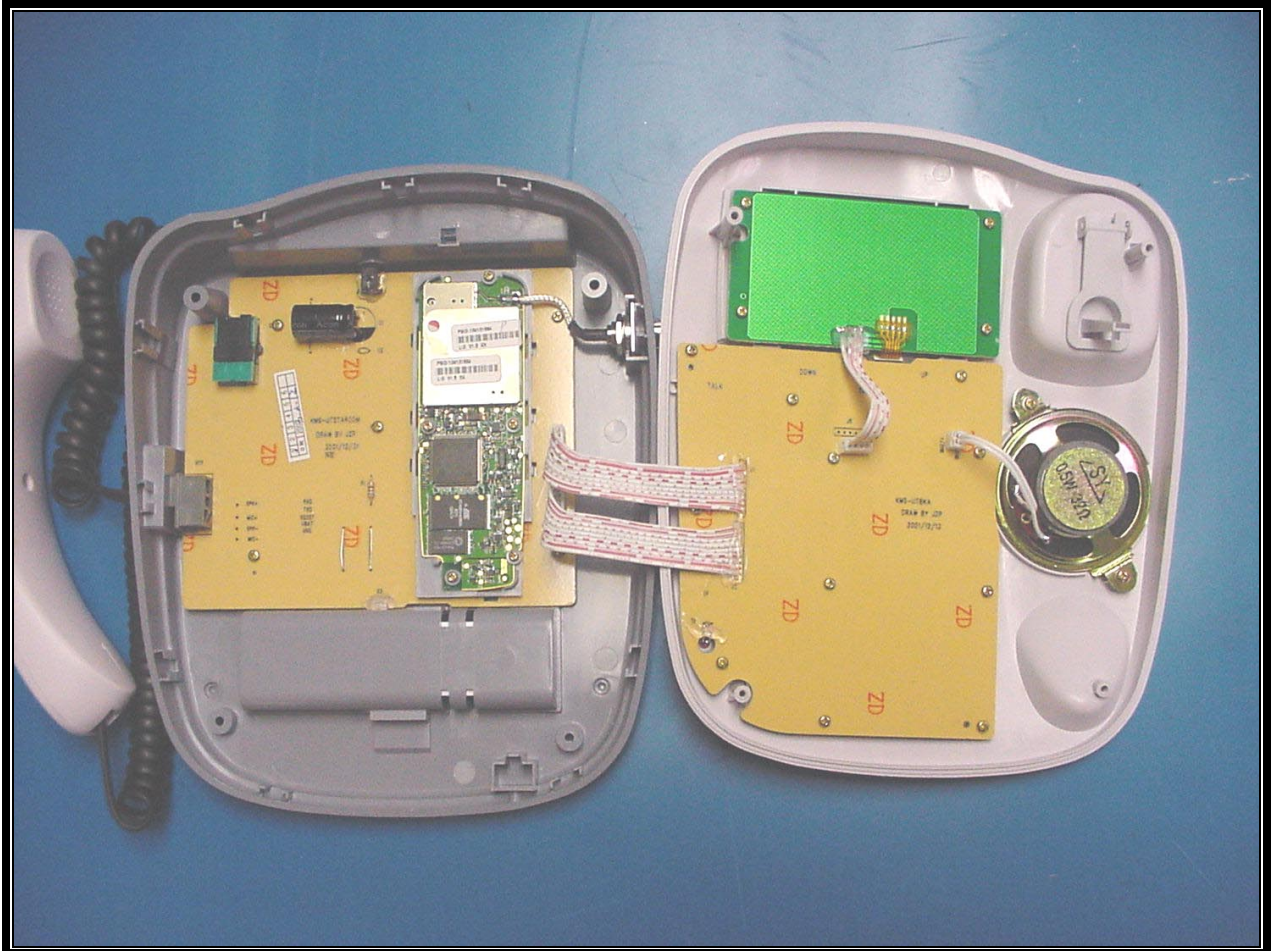
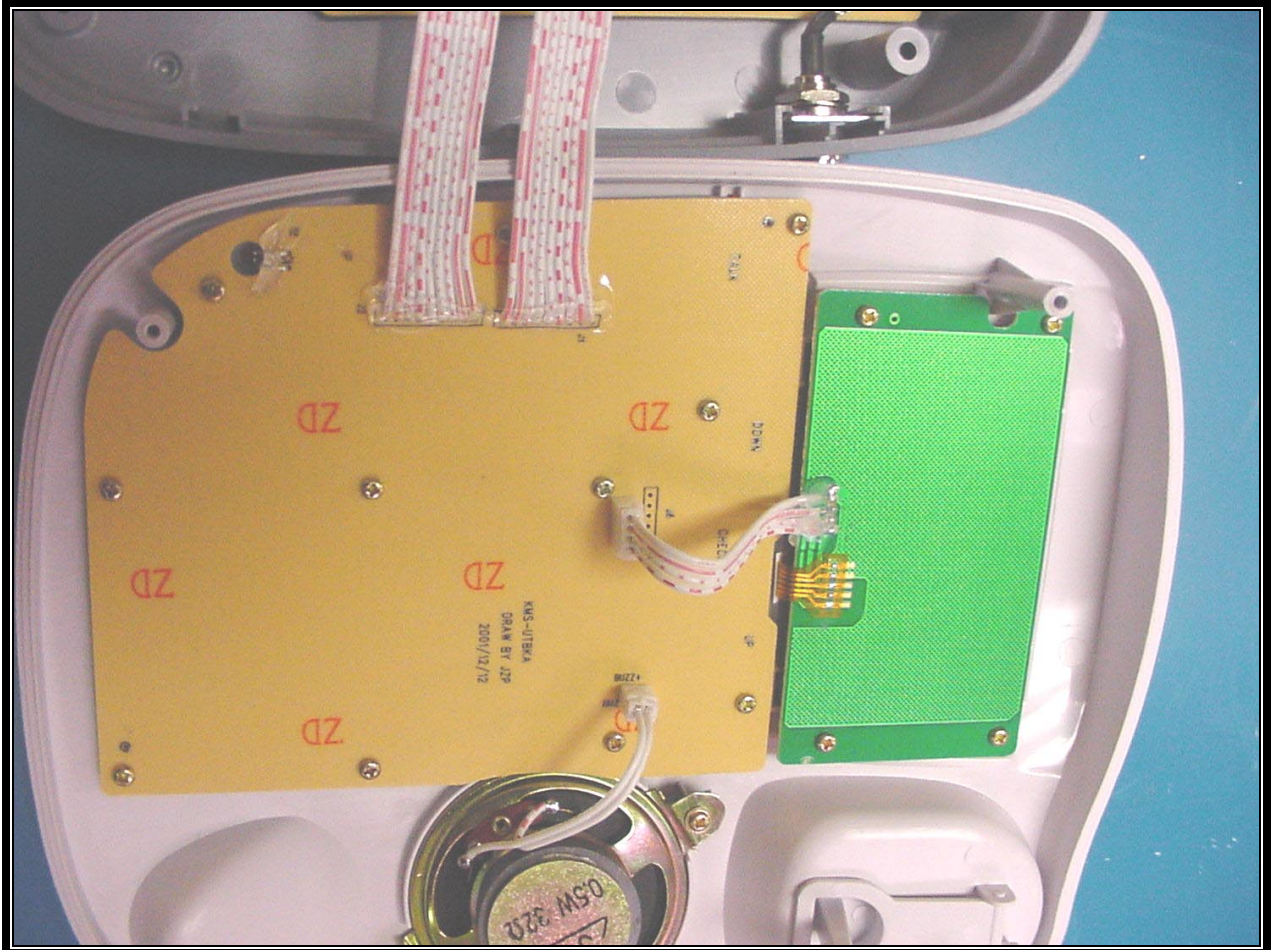


APPENDIX K: INTERNAL PHOTOGRAPHS



PHOTOGRAPH 11: INSIDE PHONE



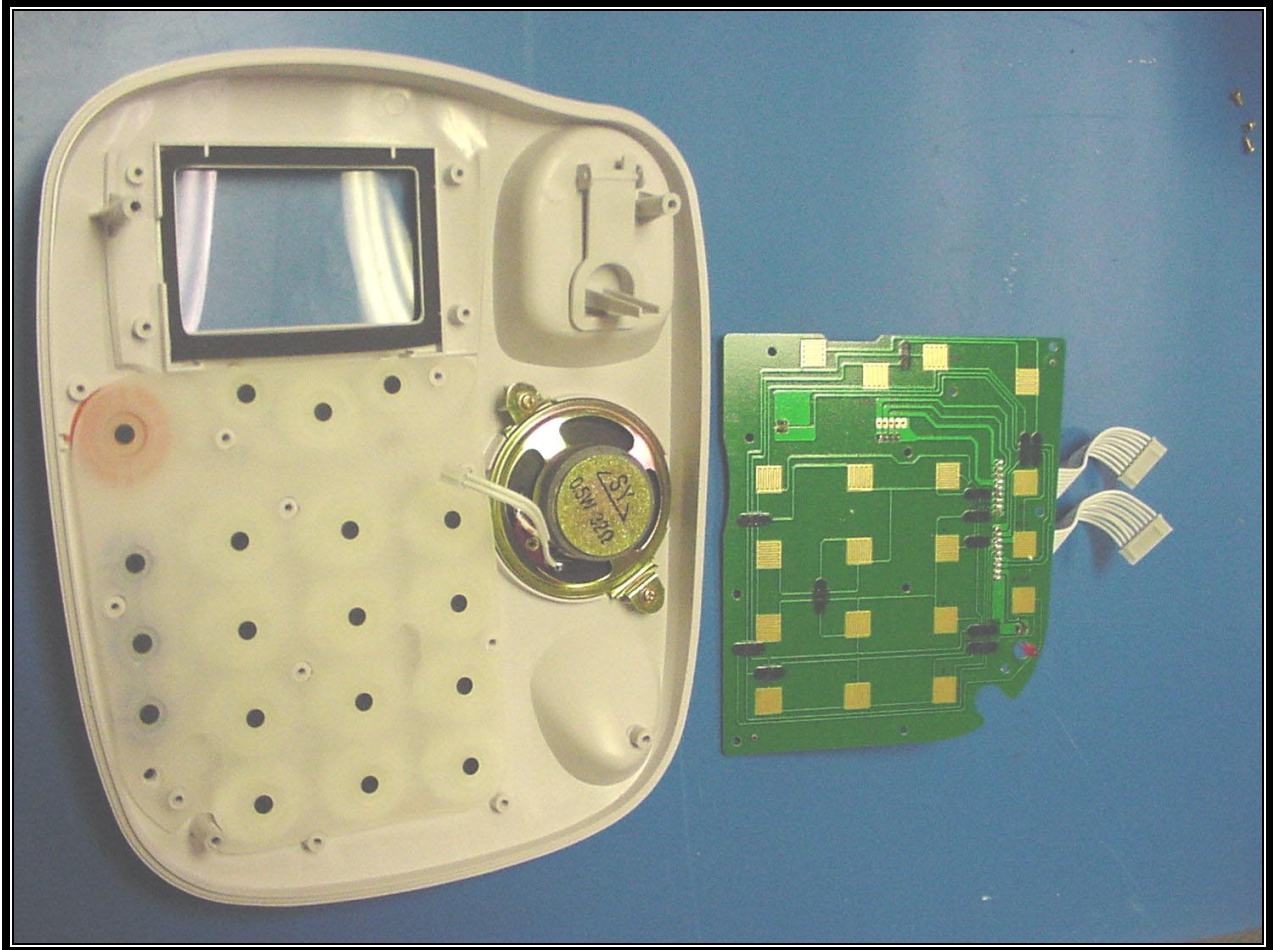
PHOTOGRAPH 12: INSIDE TOP COVER



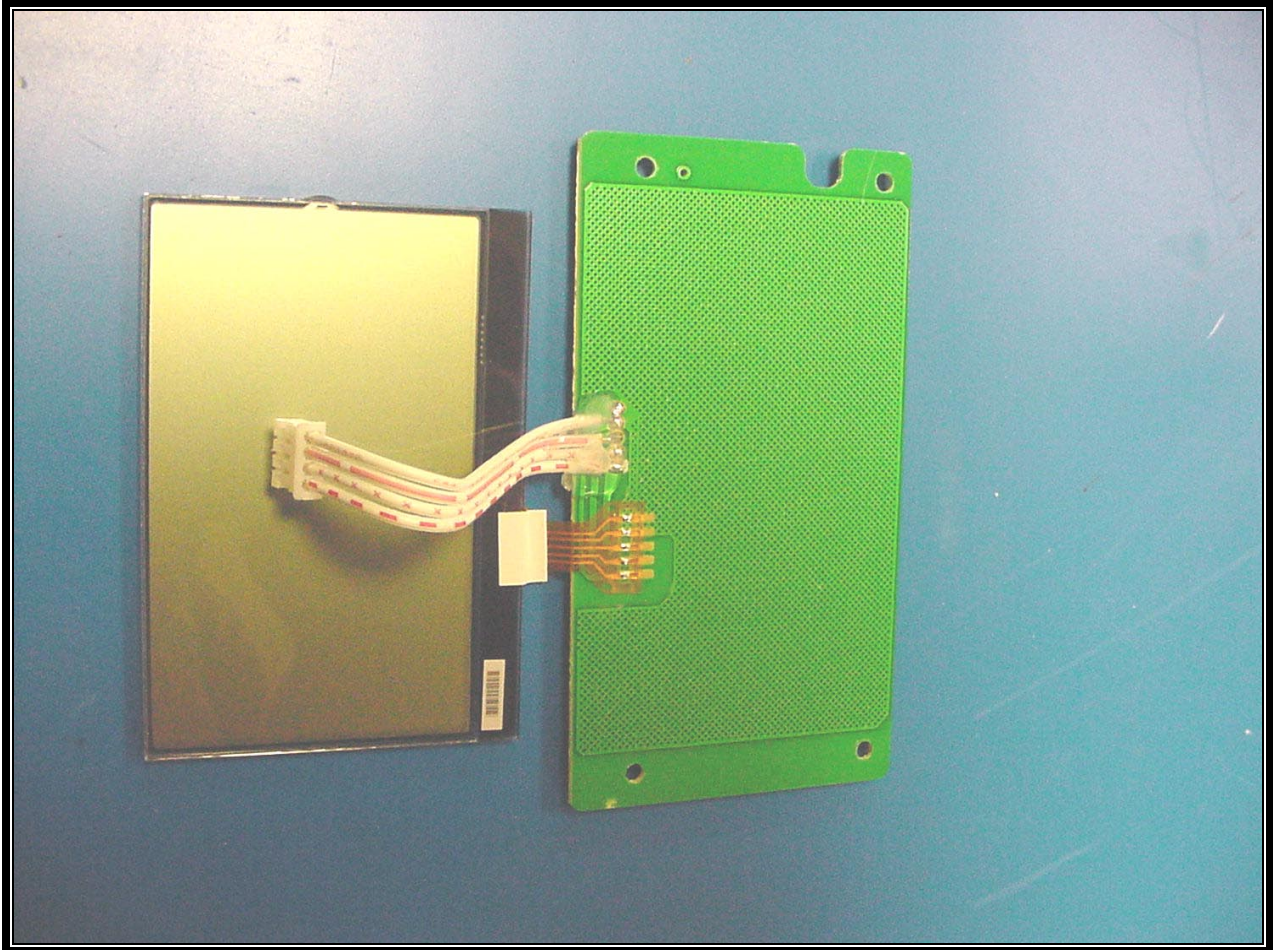
PHOTOGRAPH 13: INSIDE BACK COVER



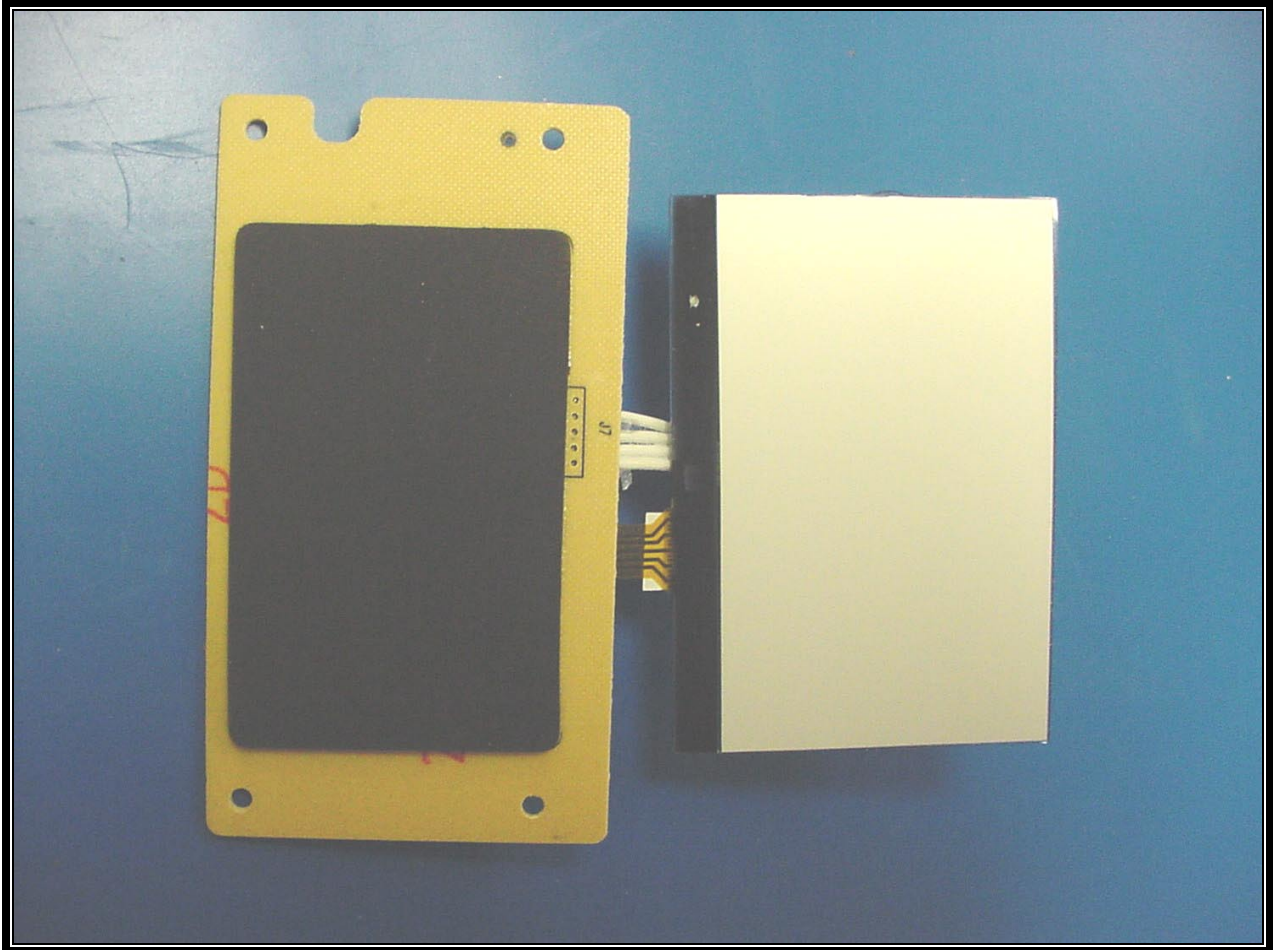
PHOTOGRAPH 14: INSIDE HANDSET



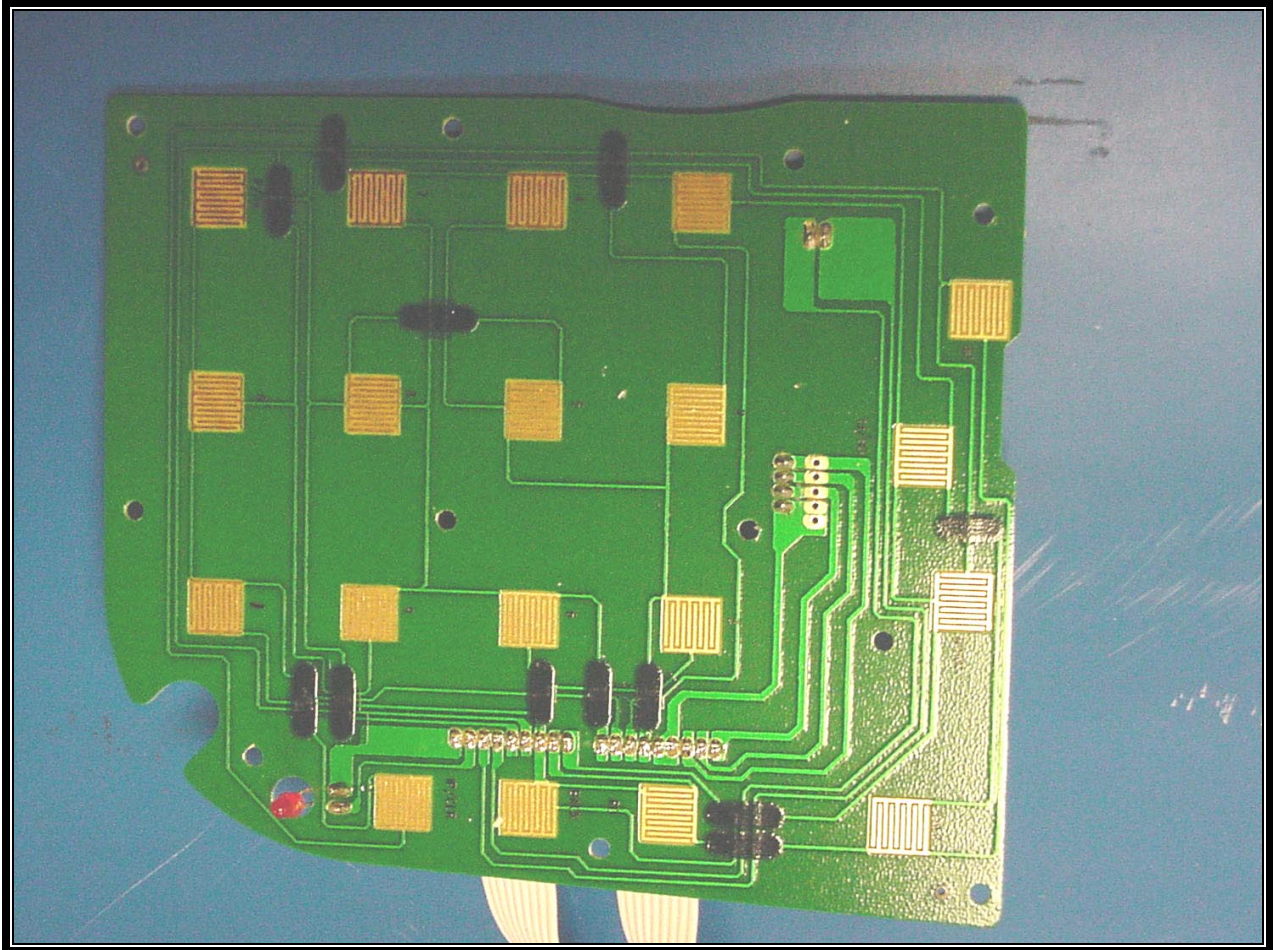
PHOTOGRAPH 15: INSIDE TOP CASE WITH KEYPAD PCB ATTACHED



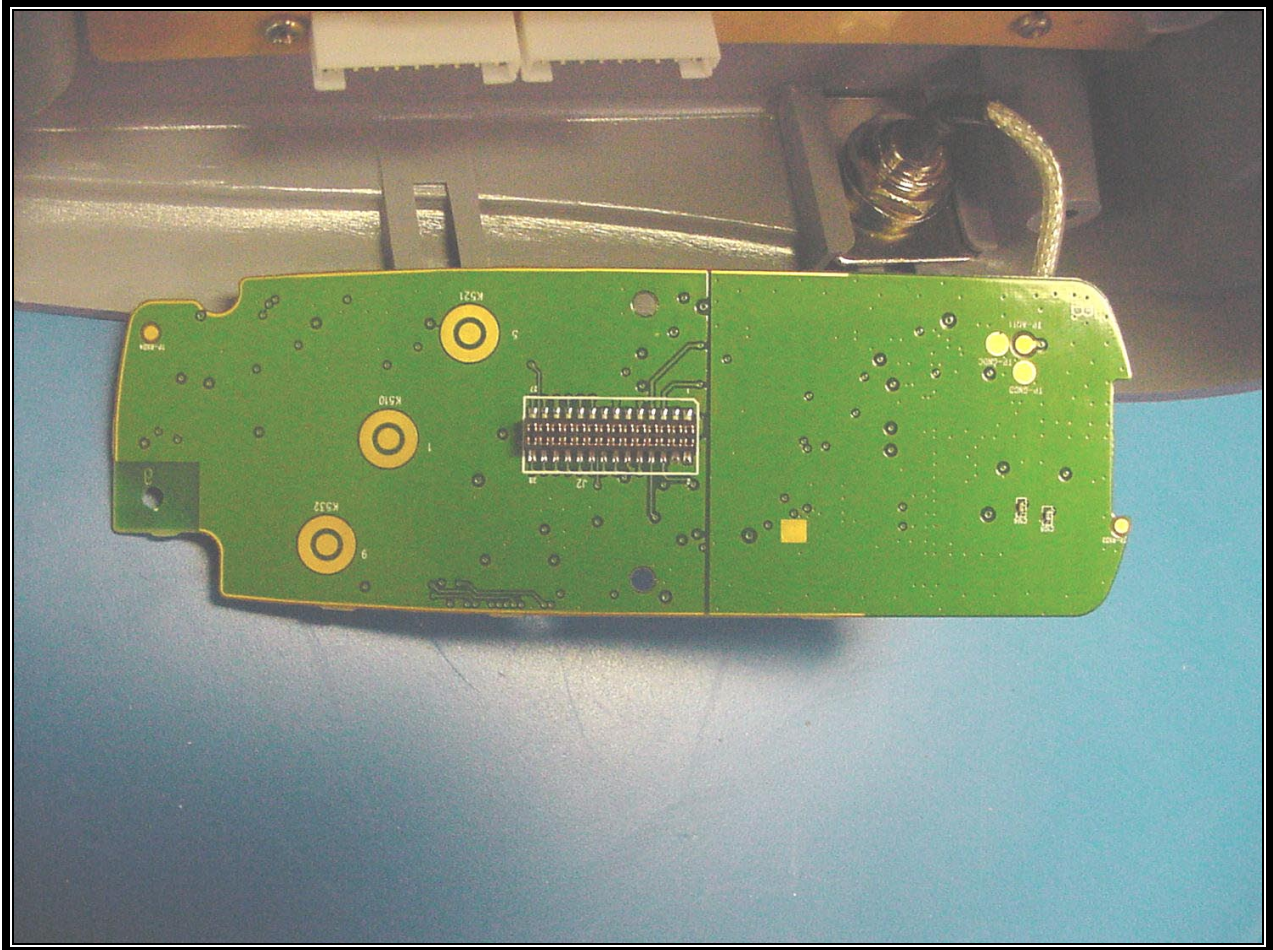
PHOTOGRAPH 16: FRONT VIEW OF LCD



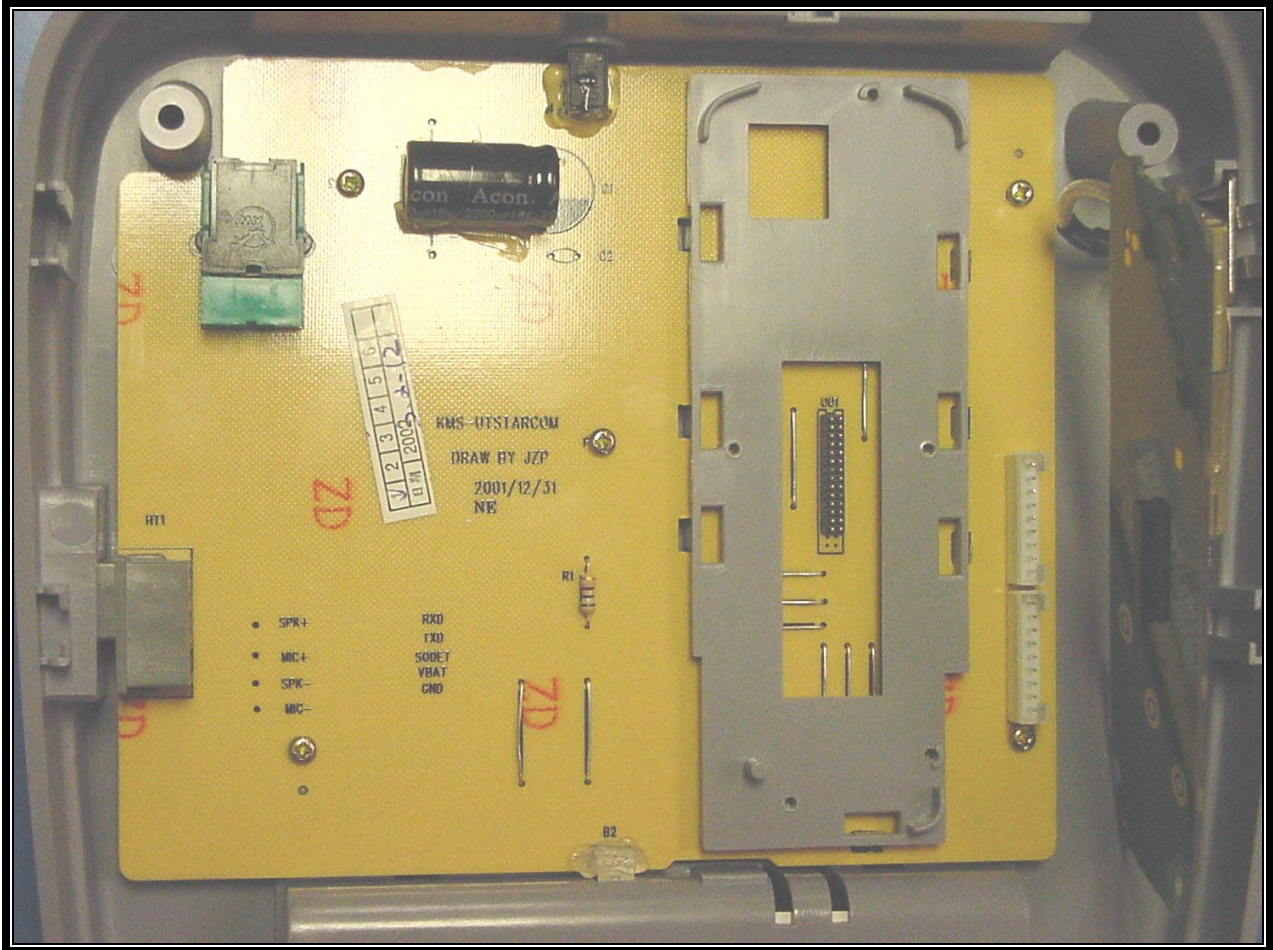
PHOTOGRAPH 17: BACK VIEW OF LCD



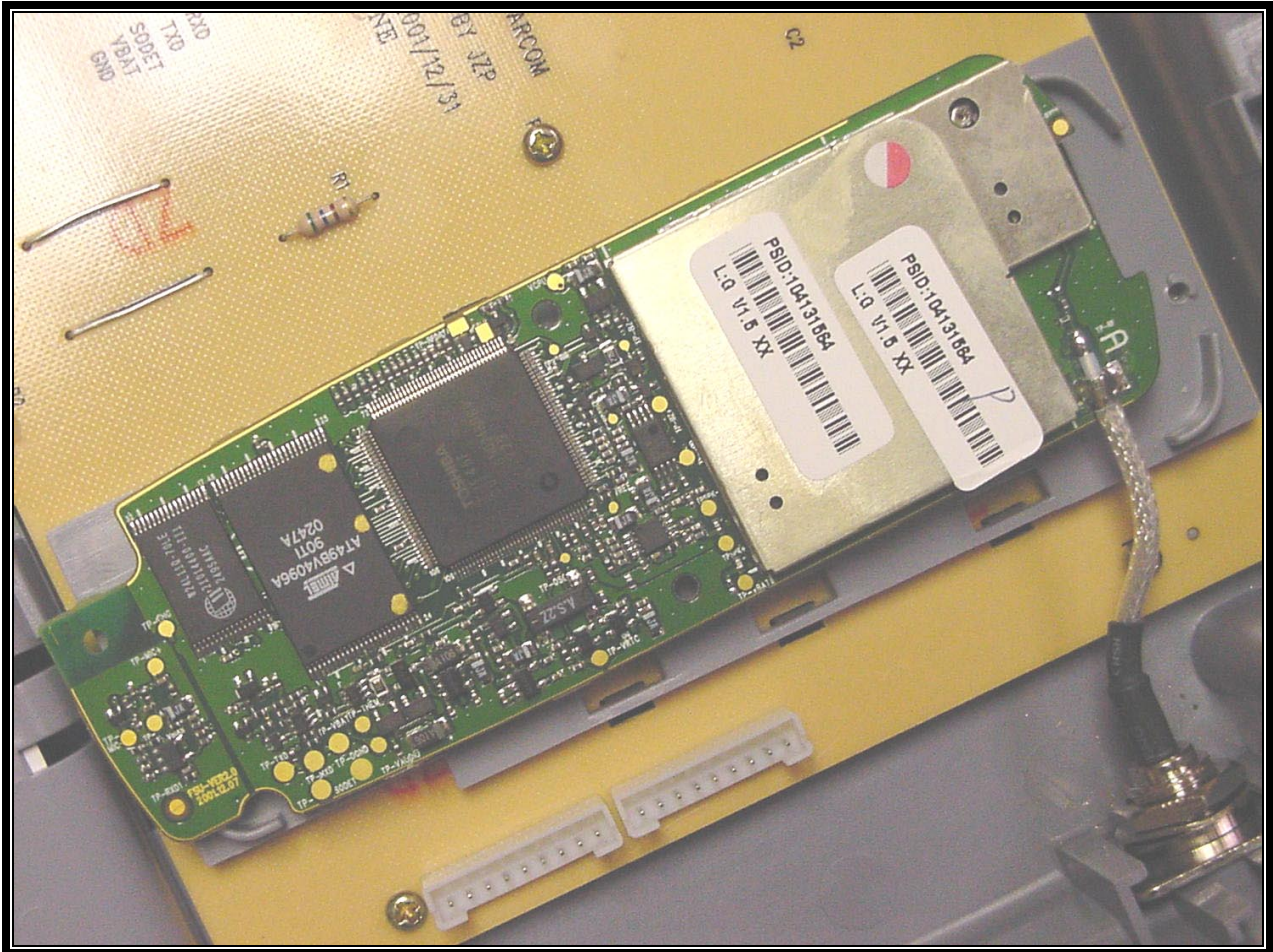
PHOTOGRAPH 18: KEYBOARD PCB TOP VIEW



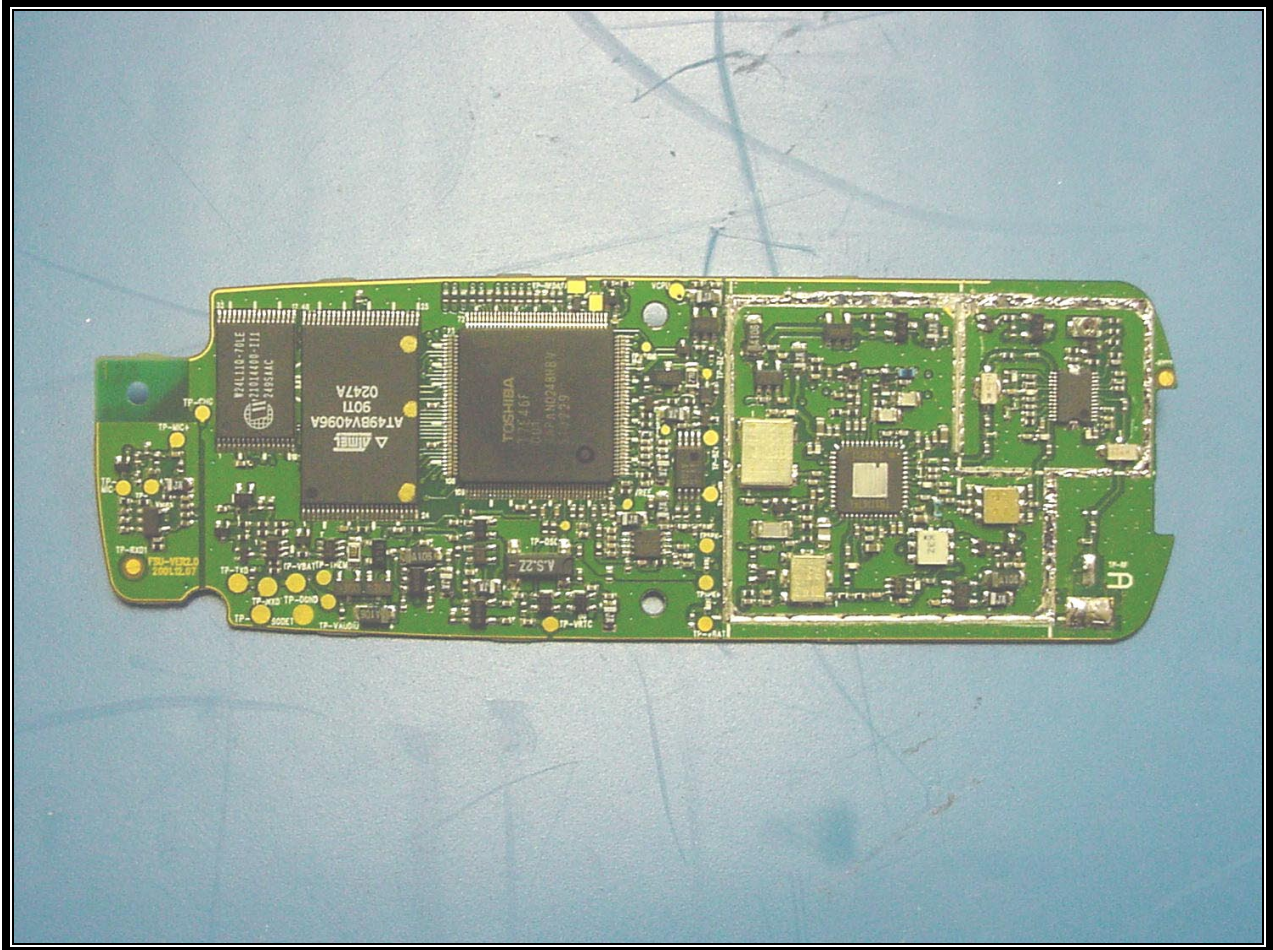
PHOTOGRAPH 19: INSIDE BOTTOM OF CASE WITH RF, POWER PCB'S, AND CONNECTOR



PHOTOGRAPH 20: RF PCB IN BOTTOM CASE



PHOTOGRAPH 21: CONNECTOR AND RF PCB IN CASE



PHOTOGRAPH 22: RF PCB WITHOUT SHIELDS



PHOTOGRAPH 23: BATTERY