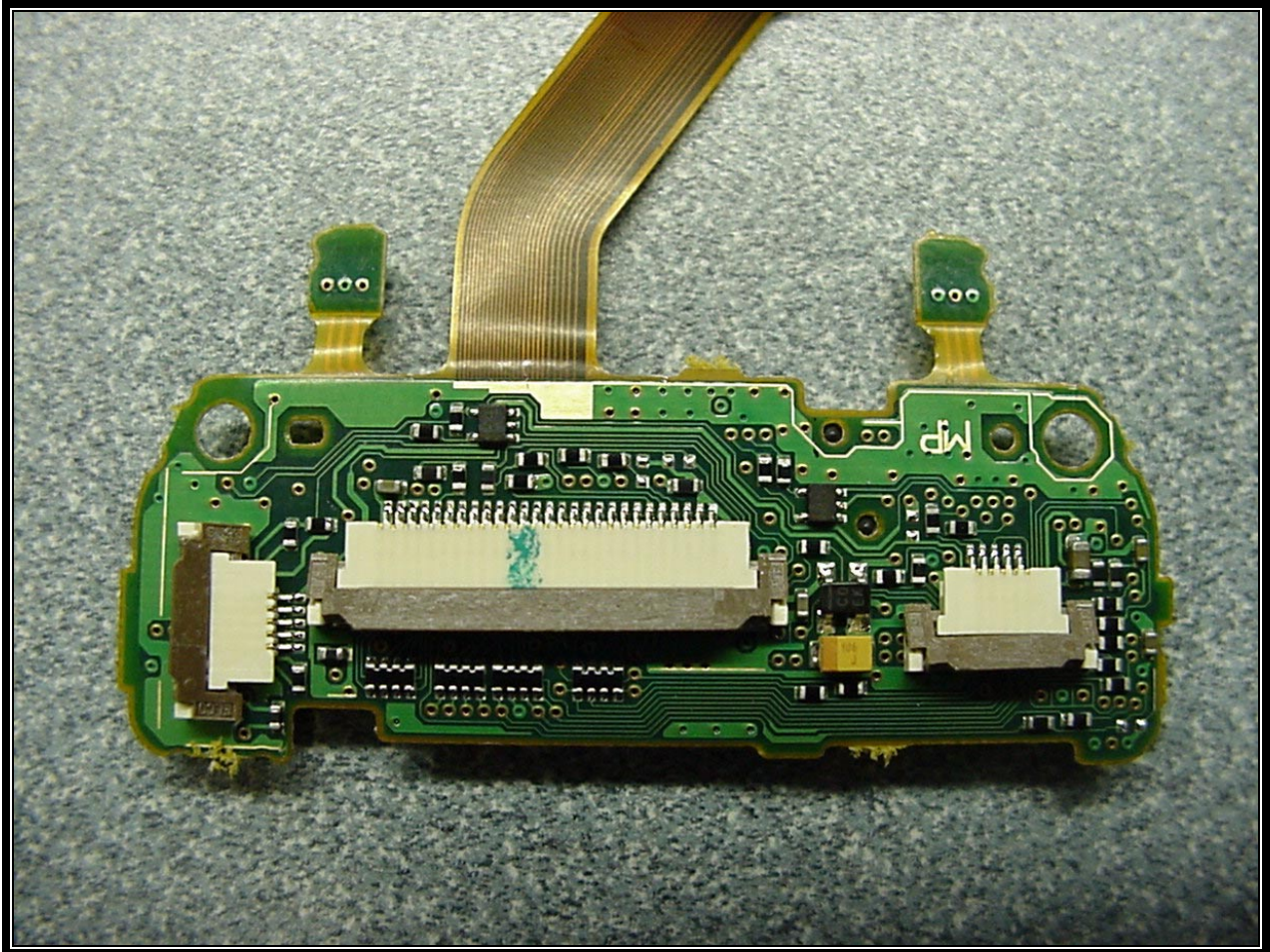


PHOTOGRAPH 39: TOP VIEW OF LCD PCB



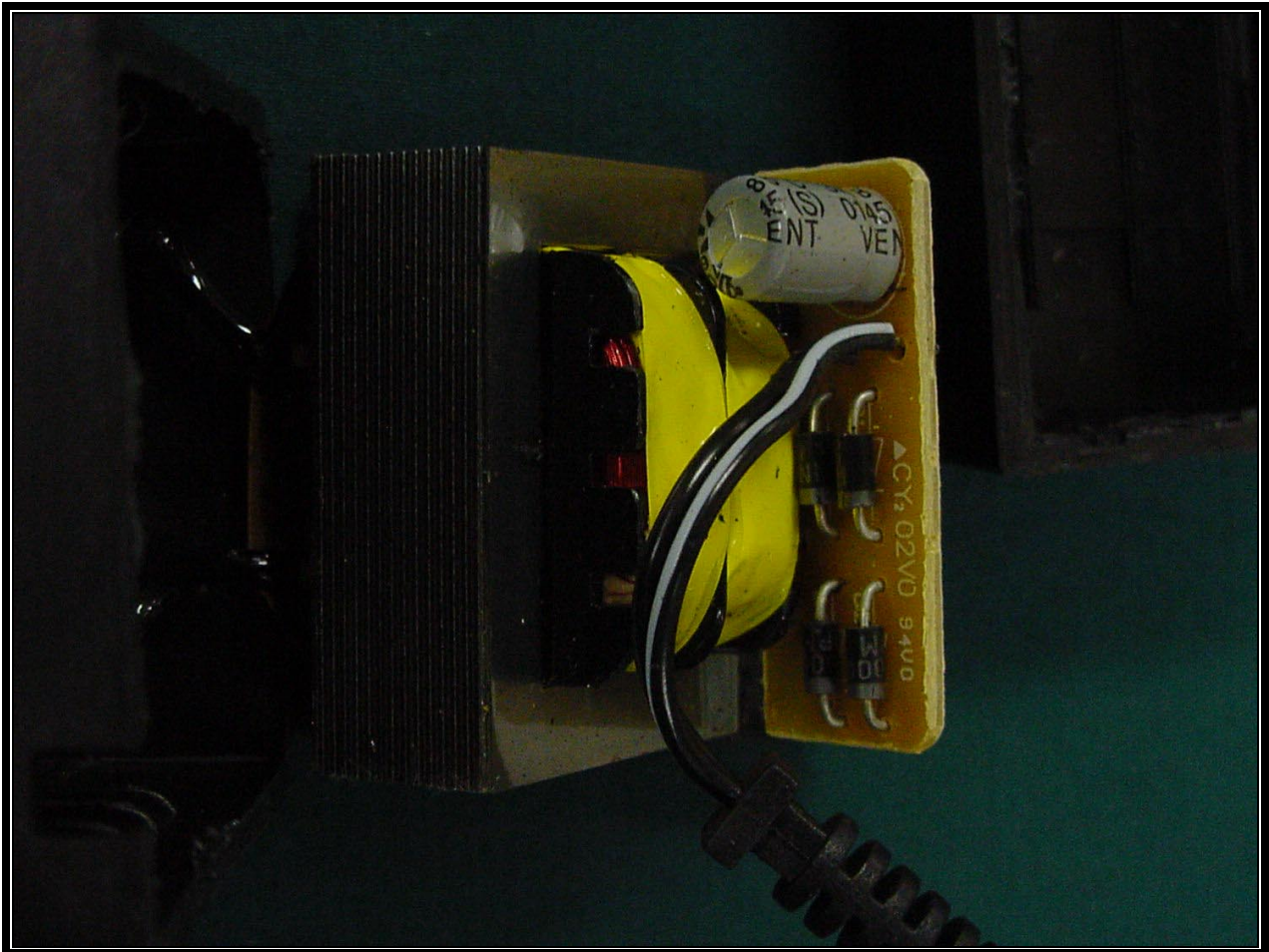
PHOTOGRAPH 40: BTMOM VIEW OF LCD PCB



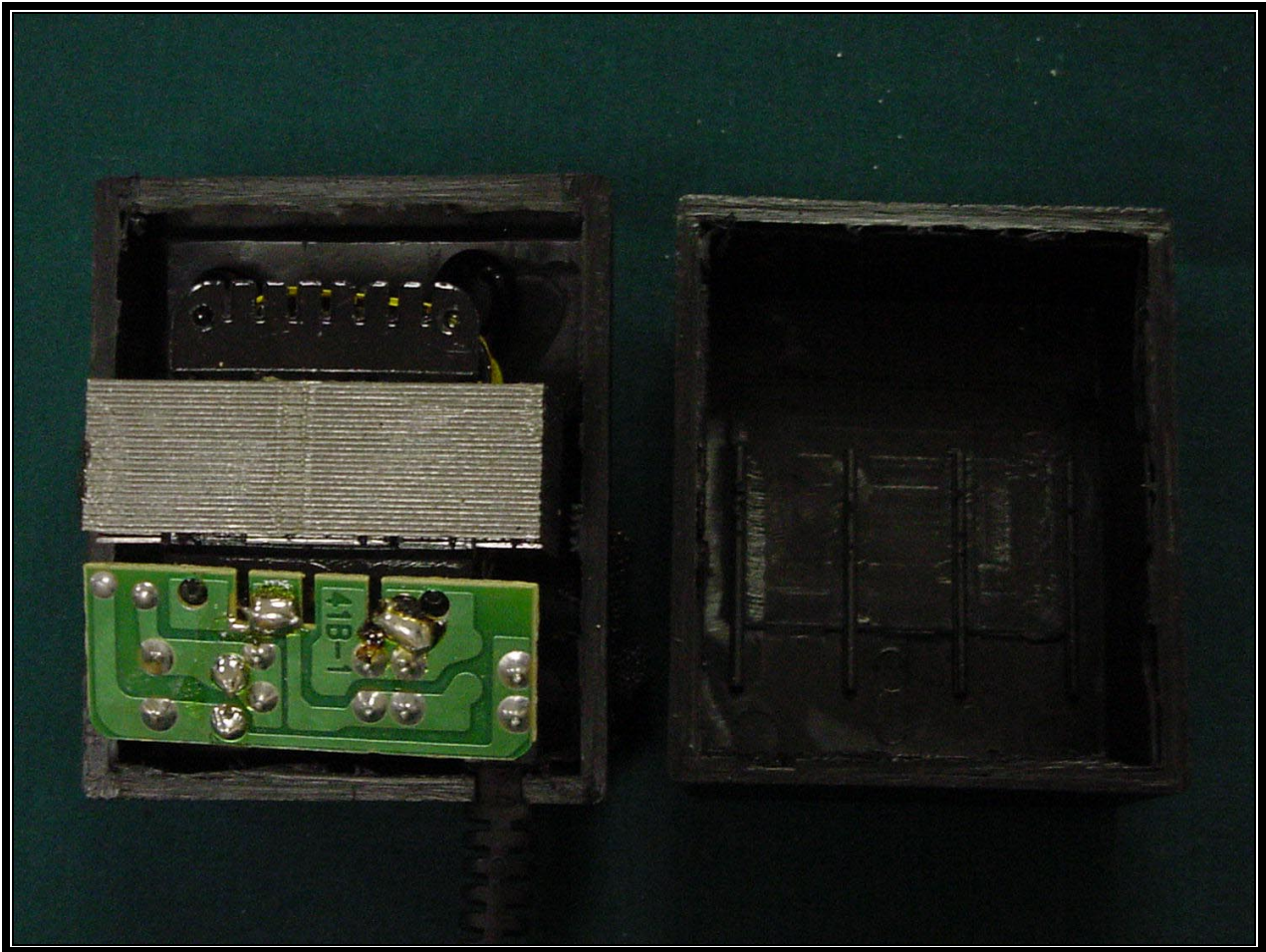
PHOTOGRAPH 41: INSIDE BATTERY COMPARTMENT



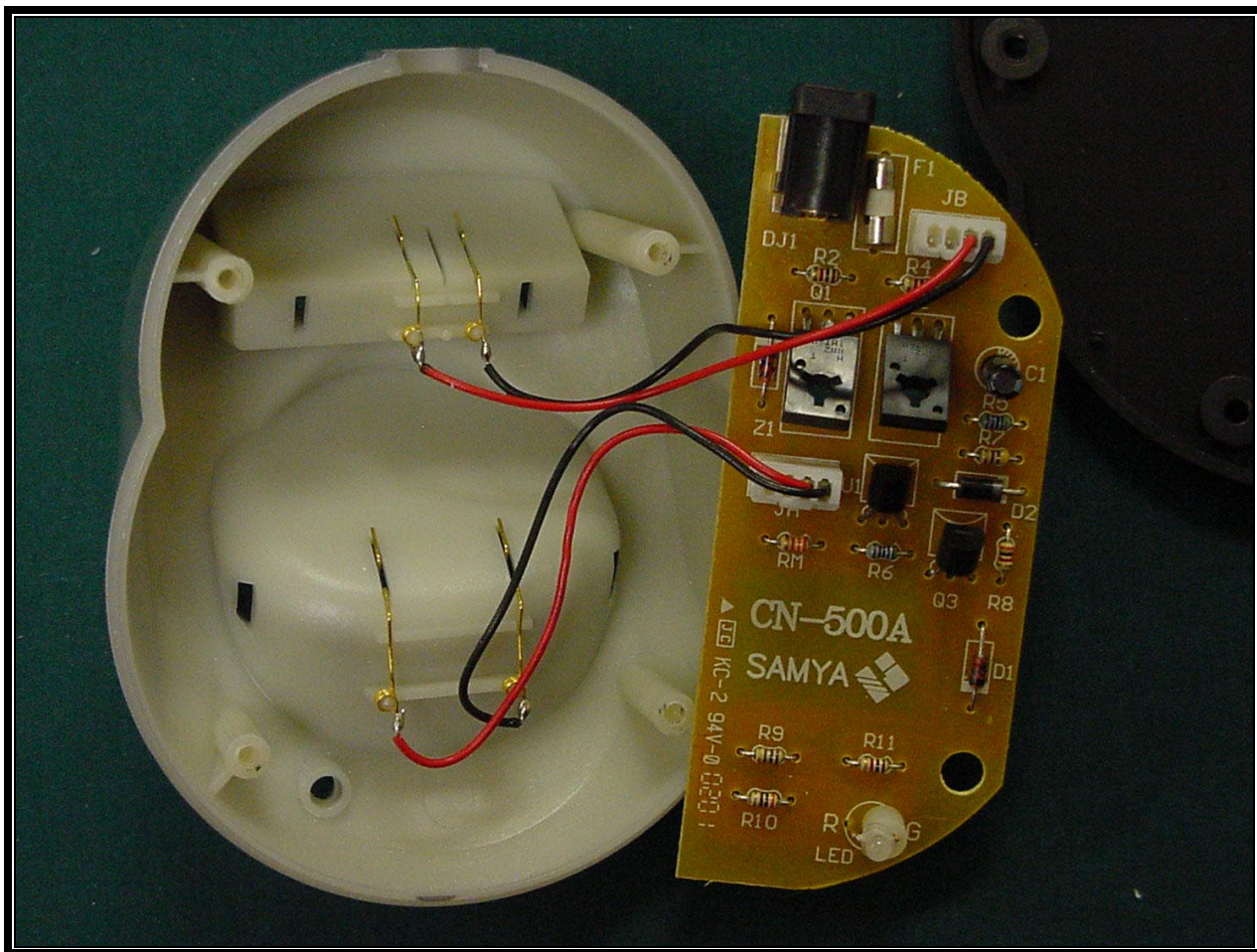
PHOTOGRAPH 42: BATTERY



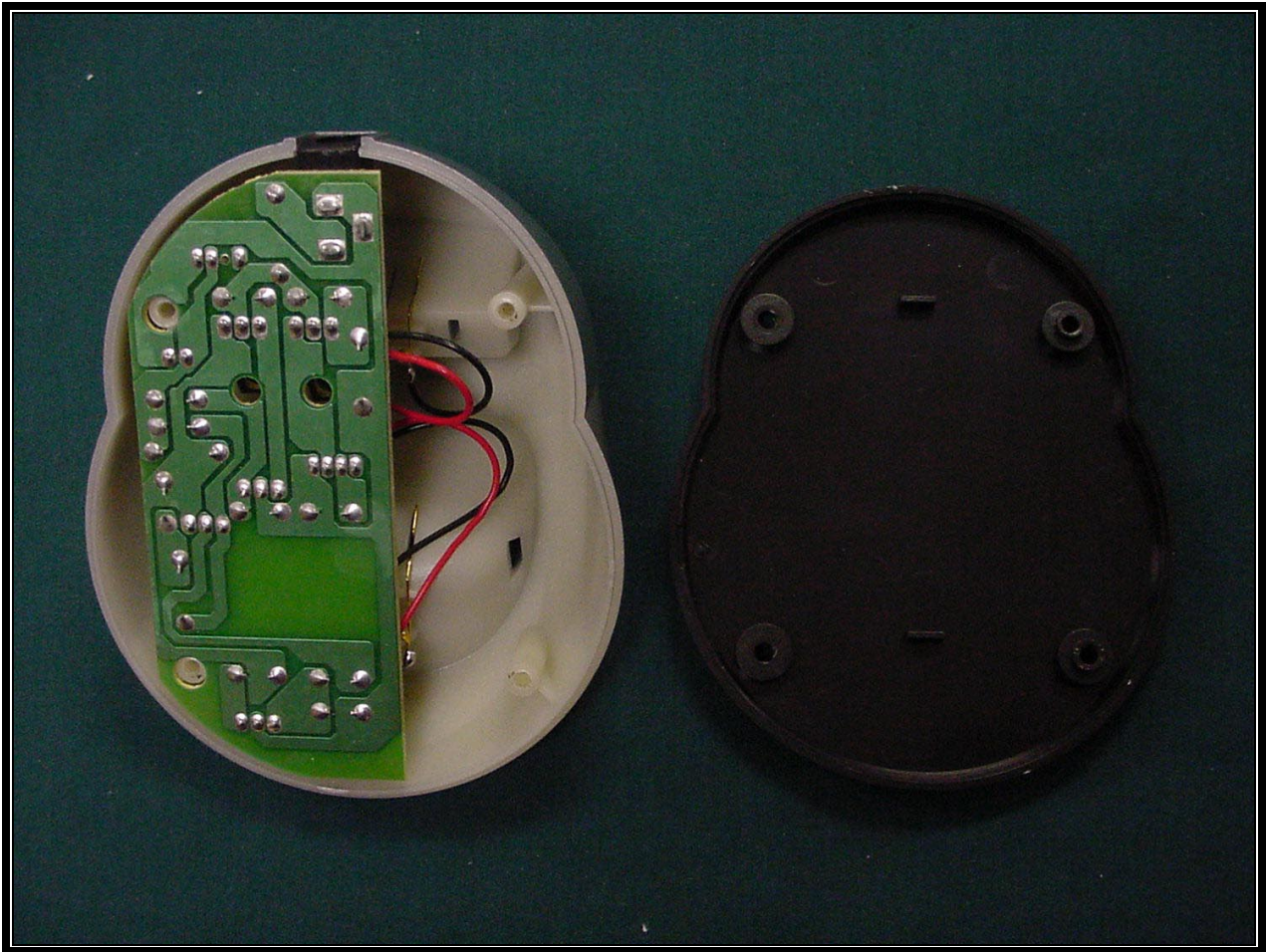
PHOTOGRAPH 43: ADAPTER PCB FRONT



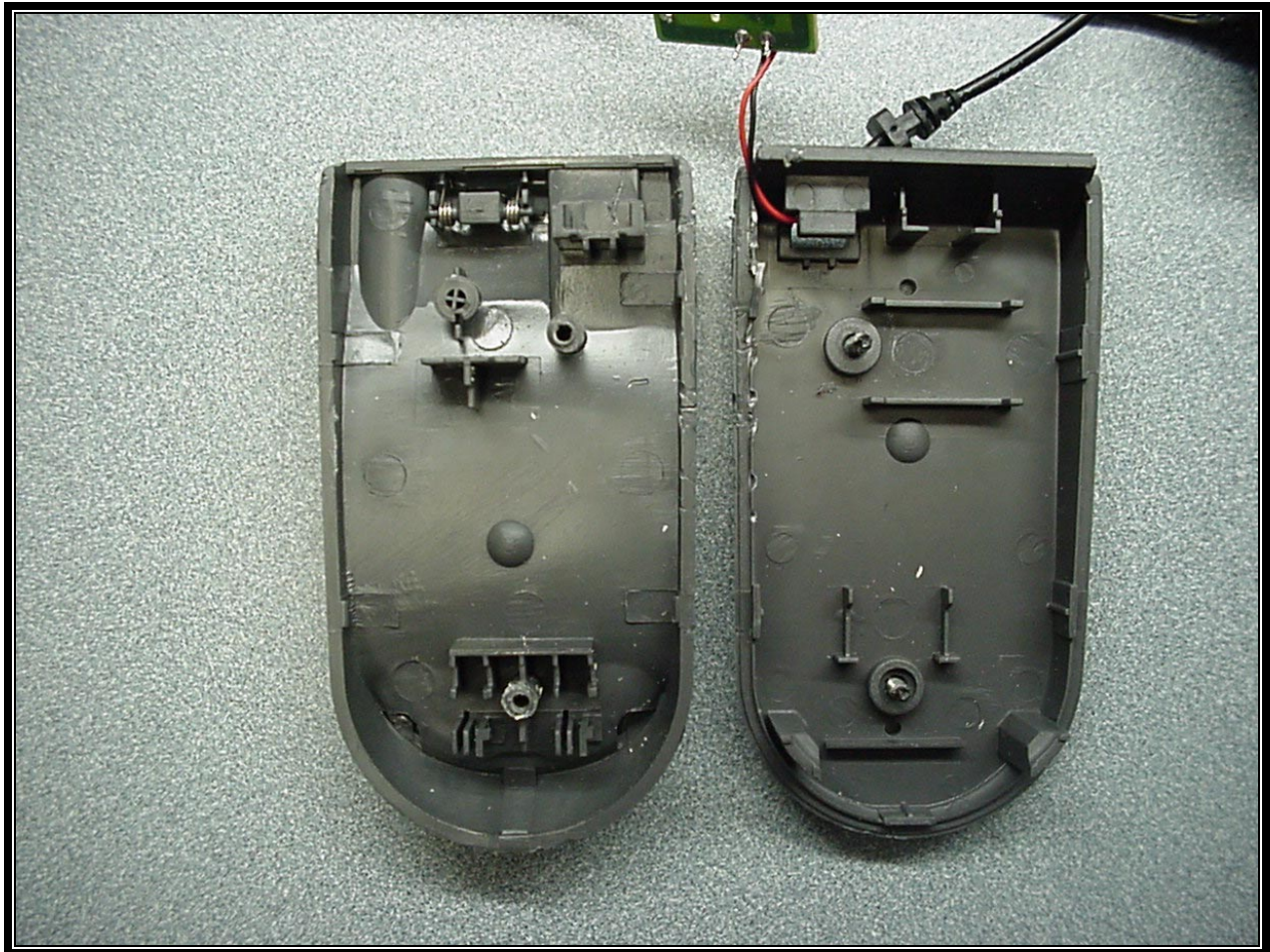
PHOTOGRAPH 44: ADAPTER PCB REAR



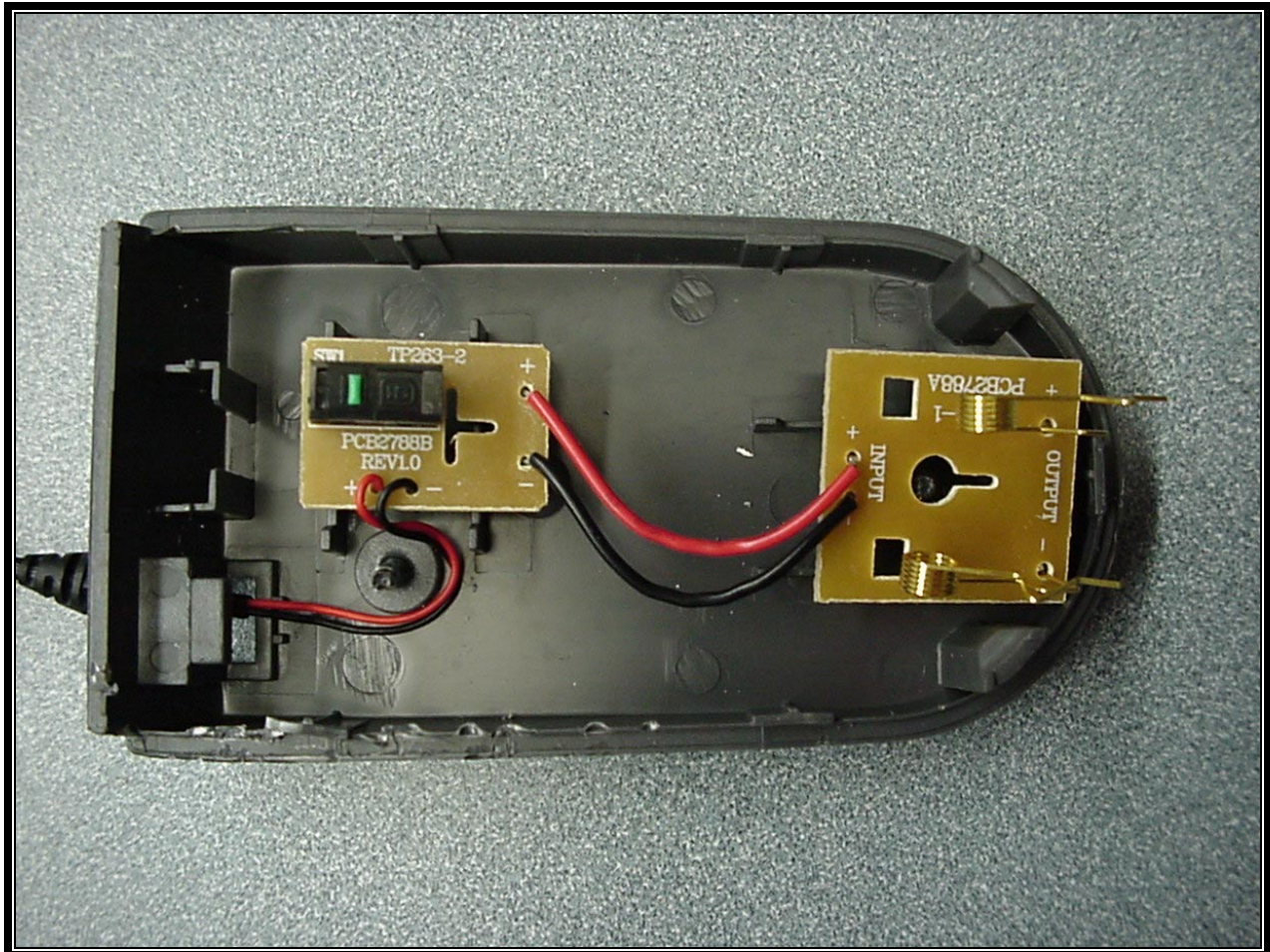
PHOTOGRAPH 45: CHARGER PCB FRONT VIEW



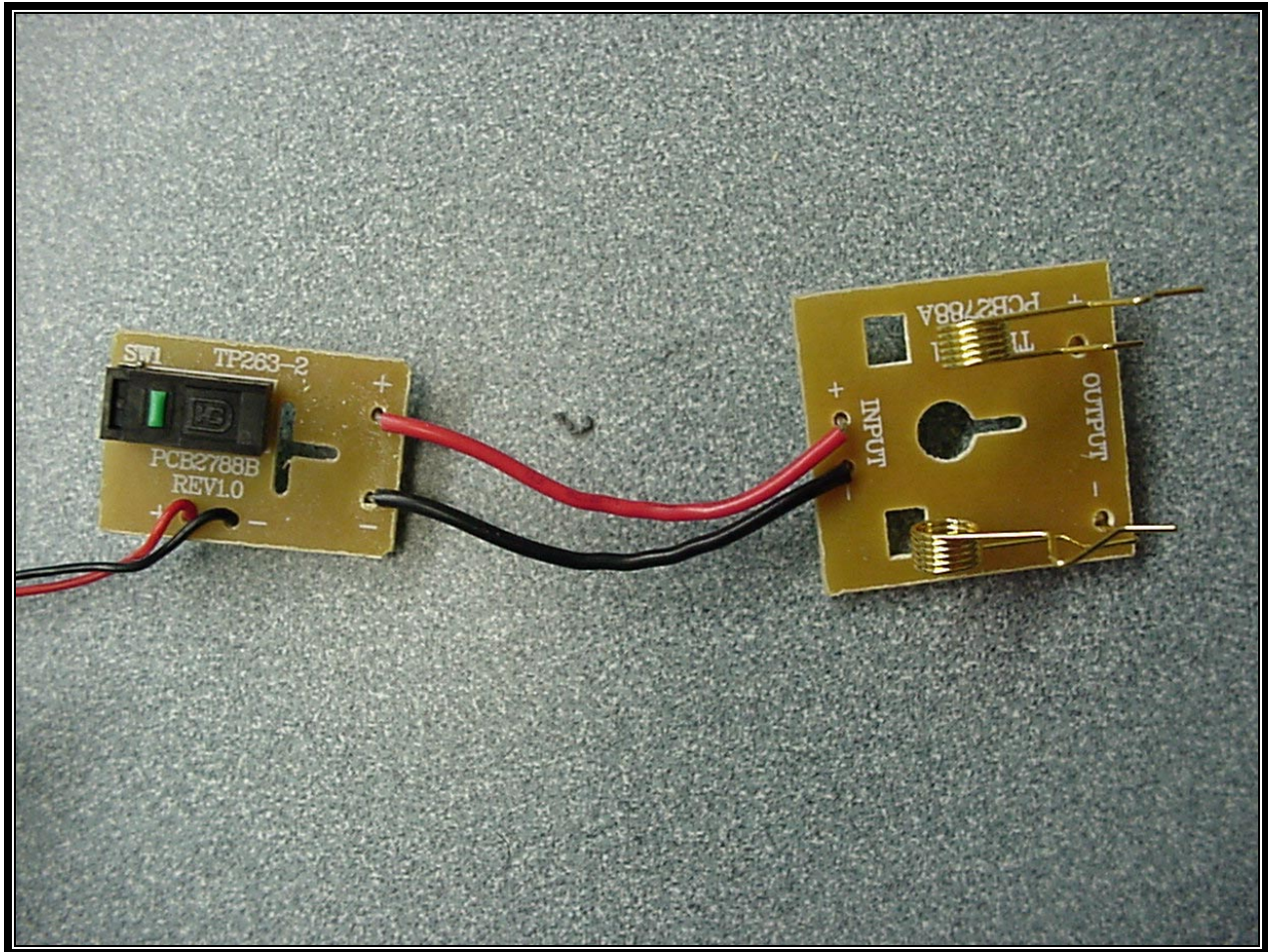
PHOTOGRAPH 46: CHARGER PCB REAR VIEW



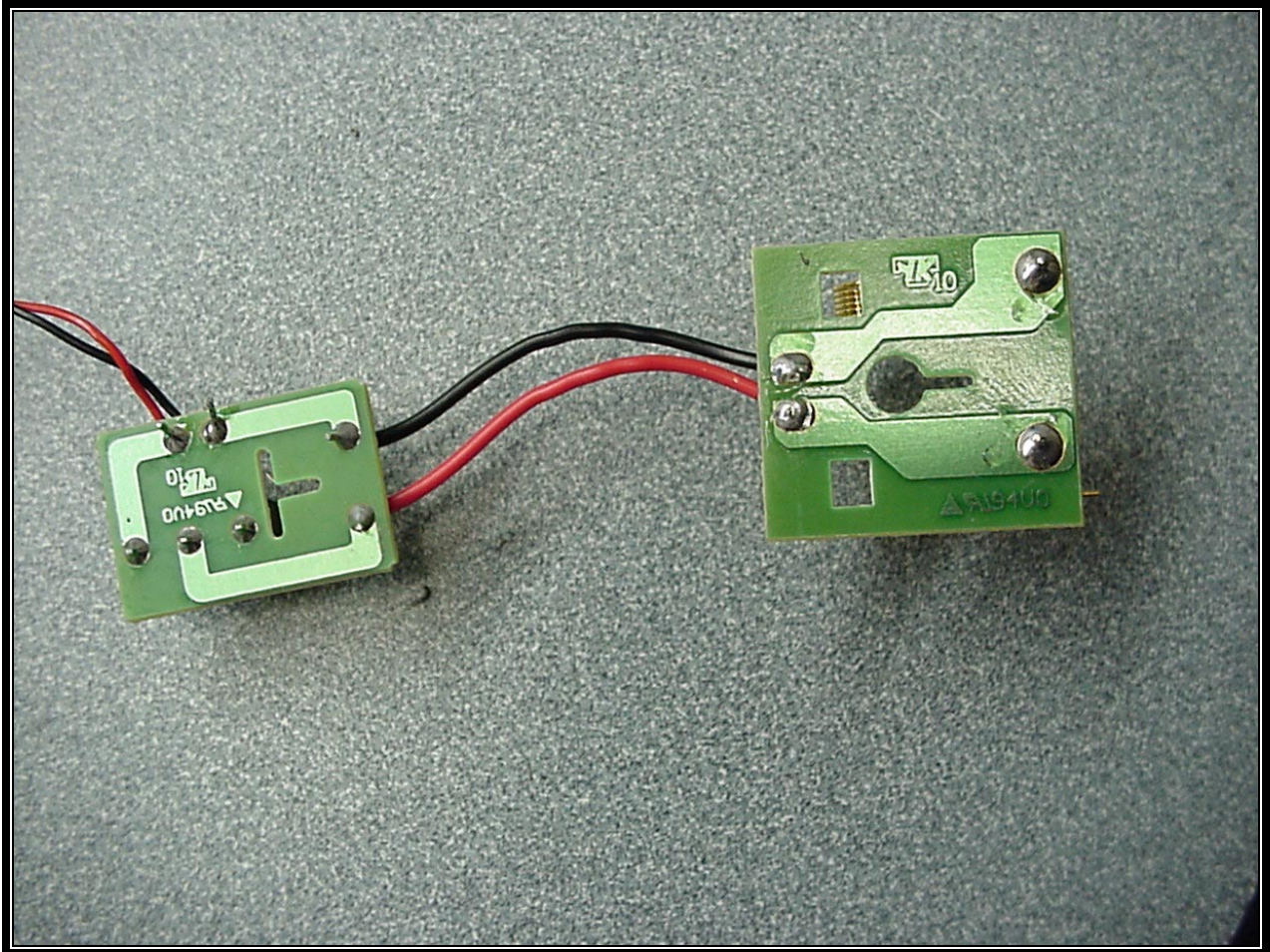
PHOTOGRAPH 47: INSIDE SMALL BATTERY CHARGER CASE



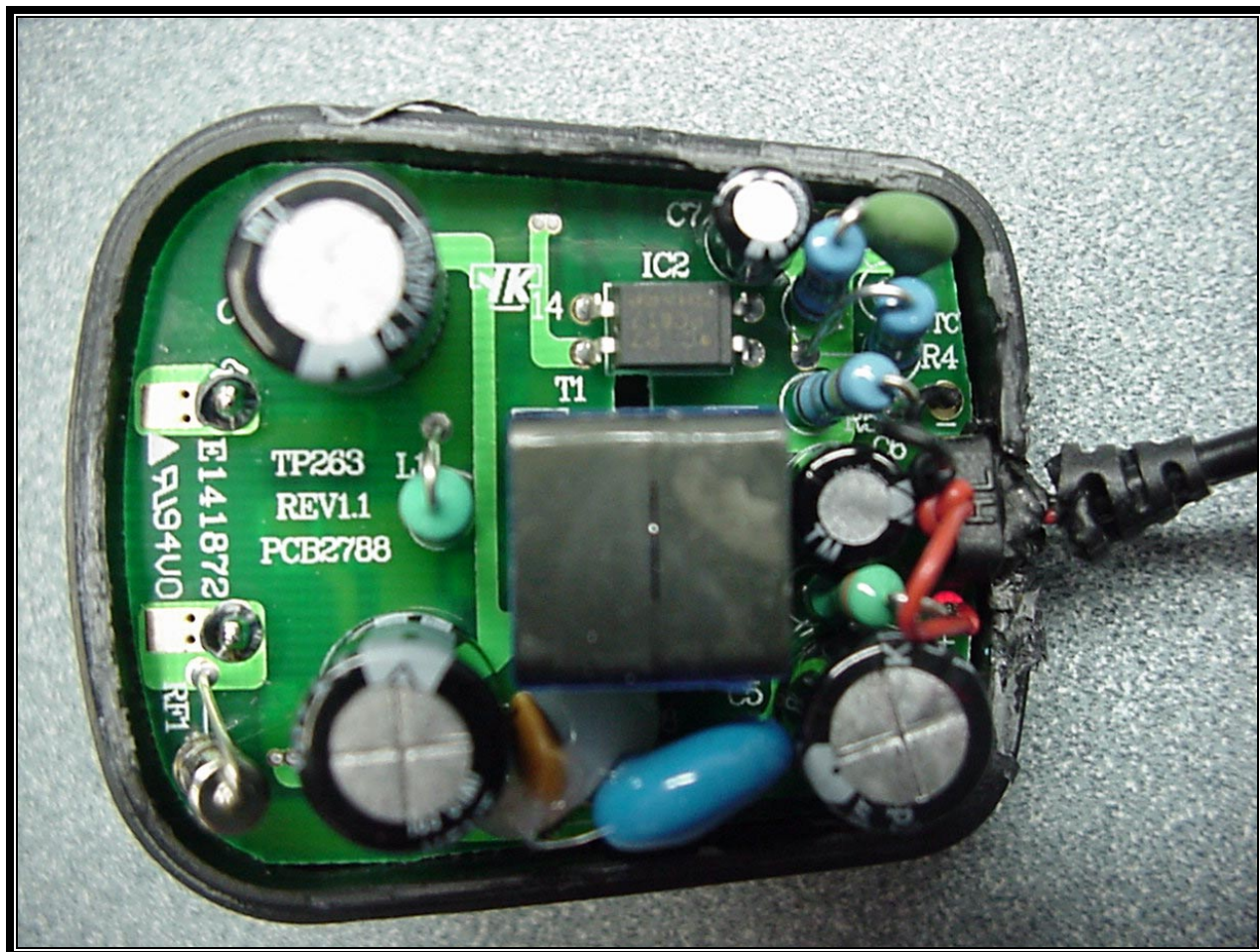
PHOTOGRAPH 48: SMALL BATTERY CHARGER WITH PCB'S



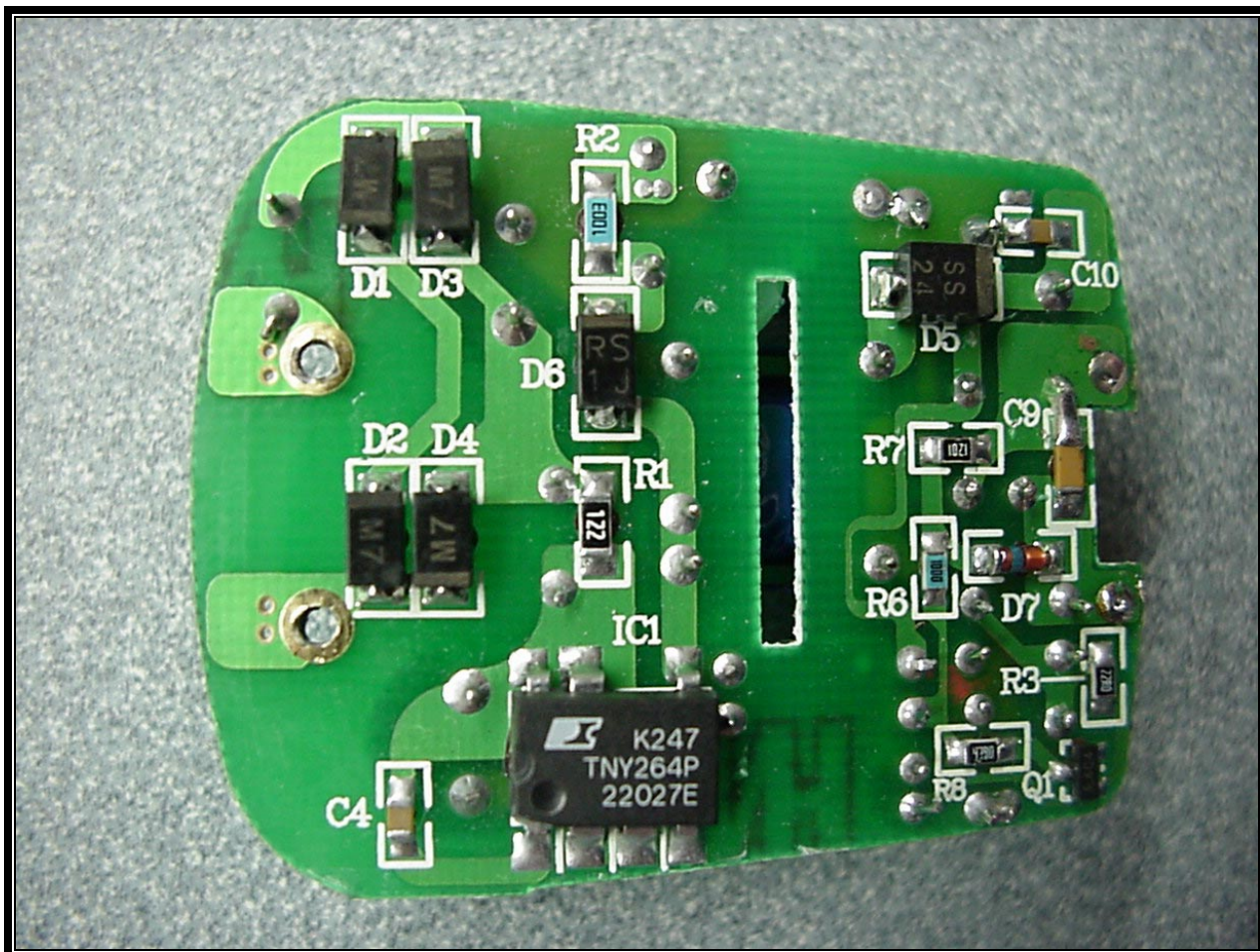
PHOTOGRAPH 49: SMALL BATTERY CHARGER PCB'S FRONT VIEW



PHOTOGRAPH 50: SMALL BATTERY CHARGER PCB'S BACK VIEW



PHOTOGRAPH 51: SMALL BATTERY CHARGER AC/DC PCB IN CASE



PHOTOGRAPH 52: SMALL BATTERY CHARGER AC/DC PCB BOTTOM