

# Application For Grant of Certification

FOR

Model: **02162**

Low Power Transmitter

FCC ID: O6R02162

IC: 3797A-02162

FOR

**DYNASTREAM INNOVATIONS, INC.**

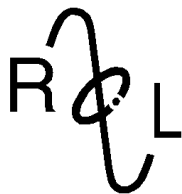
#201, 100 Grande Blvd.

Cochrane, Alberta T4C 0S4, Canada

Test Report Number 130417

Authorized Signatory: *Scot D Rogers*

Scot D. Rogers



**ROGERS LABS, INC.**

4405 West 259<sup>th</sup> Terrace  
Louisburg, KS 66053  
Phone / Fax (913) 837-3214

Test Report for Application of Certification

For

**DYNASTREAM INNOVATIONS, INC.**

#201, 100 Grande Blvd.  
Cochrane, Alberta T4C 0S4, Canada

Phone: (403) 932-9292

Mr. Jim Rooney  
President

Model: 02162  
Low Power Transmitter

Frequency Range: 2,402-2,480 MHz

FCC ID: O6R02162  
IC: 3797A-02162

Test Report Number: 130417

Test Date: April 17, 2013

Authorized Signatory: *Scot D Rogers*

Scot D. Rogers  
Rogers Labs, Inc.  
4405 West 259th Terrace  
Louisburg, KS 66053  
Telephone/Facsimile: (913) 837-3214

This report shall not be reproduced except in full, without the written approval of the laboratory.  
This report must not be used by the client to claim product certification, approval or endorsement by  
NVLAP, NIST, or any agency of the Federal Government.



## Table of Contents

<b>TABLE OF CONTENTS.....</b>	<b>3</b>
<b>REVISIONS.....</b>	<b>4</b>
<b>FORWARD .....</b>	<b>5</b>
<b>OPINION / INTERPRETATION OF RESULTS .....</b>	<b>5</b>
<b>EQUIPMENT TESTED SETUP, FUNCTION AND CONFIGURATIONS .....</b>	<b>5</b>
Equipment Function and Test Setup.....	6
EUT Configuration Options .....	6
<b>APPLICATION FOR CERTIFICATION.....</b>	<b>7</b>
<b>STATEMENT OF MODIFICATIONS AND DEVIATIONS .....</b>	<b>8</b>
<b>APPLICABLE STANDARDS &amp; TEST PROCEDURES .....</b>	<b>8</b>
<b>EQUIPMENT TESTING PROCEDURES .....</b>	<b>8</b>
AC Line Conducted Emission Test Procedure.....	8
Diagram 1 Test arrangement for Conducted emissions.....	9
Radiated Emission Test Procedure .....	10
Diagram 2 Test arrangement for radiated emissions of tabletop equipment .....	10
Diagram 3 Test arrangement for radiated emissions tested on Open Area Test Site (OATS) .....	11
<b>TEST SITE LOCATIONS .....</b>	<b>12</b>
<b>UNITS OF MEASUREMENTS .....</b>	<b>12</b>
<b>ENVIRONMENTAL CONDITIONS.....</b>	<b>12</b>
<b>LIST OF TEST EQUIPMENT .....</b>	<b>13</b>
<b>INTENTIONAL RADIATORS.....</b>	<b>14</b>
Antenna Requirements.....	14
Restricted Bands of Operation .....	14
Table 1 Radiated Emissions in Restricted Bands Data.....	15
Summary of Results for Radiated Emissions in Restricted Bands .....	15
General Radiated EMI Testing Procedure .....	16
Table 3 General Radiated Emissions Data (worst-case).....	17



Summary of Results for General Radiated Emissions.....	17
<b>OPERATION IN THE BAND 2,400-2,483.5 MHZ .....</b>	<b>17</b>
Figure 1 Representative plot of Occupied Bandwidth (low channel).....	18
Figure 2 Operation across frequency band .....	18
Figure 3 Low Frequency Band Edge.....	19
Figure 4 High Frequency Band Edge.....	19
Transmitter Radiated Emissions Data .....	20
Table 4 Transmitter Radiated Emissions Data .....	20
Summary of Results for Transmitter Radiated Emissions.....	21
<b>ANNEX.....</b>	<b>22</b>
Annex A Measurement Uncertainty Calculations .....	23
Annex B Rogers Labs Test Equipment List .....	24
Annex C Rogers Qualifications.....	25
Annex D FCC Test Site Registration Letter .....	26
Annex E Industry Canada Test Site Registration Letter .....	27

## Revisions

Revision 1 May 16, 2013

## Forward

The following information is submitted for consideration in obtaining Grant of Certification for low power intentional radiator per 47CFR Paragraph 15.249, and Industry Canada RSS-210, operation in the 2400 – 2483.5 MHz band.

Name of Applicant: Dynastream Innovations, Inc.  
#201, 100 Grande Blvd.  
Cochrane, Alberta T4C 0S4, Canada

Model: 02162

FCC ID: O6R02162 Industry Canada ID: 3797A-02162

Frequency Range: 2,402-2,480 MHz

Operating Power: Less than 2 mW measured, maximum peak power 93.7 dBμV/m @ 3 meters, 6-dB occupied bandwidth 456.7 kHz

## Opinion / Interpretation of Results

Test Performed	Minimum Margin (dB)	Results
Antenna requirement per 47CFR 15.203, RSS-210	NA	Complies
Restricted Bands Emissions as per 47CFR 15.205	-15.9	Complies
AC Line Conducted Emissions as per 47CFR 15.207	N/A	Complies
Radiated Emissions as per 47CFR 15.209	-14.4	Complies
Emissions per 47CFR 15.249 (Harmonics)	-8.1	Complies
Emissions per RSS-210	As Documented	Complies

## Equipment Tested Setup, Function and Configurations

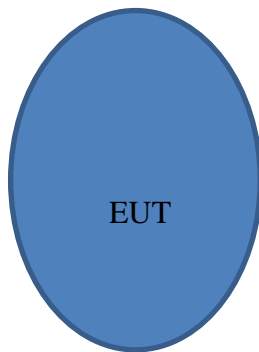
<u>Equipment</u>	<u>Model/GPN</u>	<u>Serial Number</u>	<u>FCC ID</u>	<u>IC</u>
02162 (EUT)	02162	17638	O6R02162	3797A-02162
02162 (#2)	02162	17575	N/A	N/A

Test results in this report relate only to the items tested.

## ***Equipment Function and Test Setup***

The EUT is a low power data transceiver for use with compliant equipment. The design incorporates a low power transmitter with operation capability in the 2,402-2,480 MHz frequency band (47CFR 15.249 and RSS-210). The equipment offers wireless communication capability with compliant 2,402-2,480 MHz equipment. Two test samples were provided, 1) as production equipment with integral antenna, and 2) antenna replaced with 50-ohm connection port for testing purposes. Test samples were supplied with test software providing testing personnel ability to enable transmitter function on defined channels. The EUT was arranged as typical user equipment configurations for testing purposes. The transmitter offers no other interface connections than those in the configuration diagrams shown below. The unit operates from internal battery power only and the transmit function is activated while the battery is installed. As requested by the manufacturer and required by regulations, the equipment was tested for emissions compliance using the available configurations with the worst-case data presented. Test results in this report relate only to the products described in this report.

## ***EUT Configuration Options***



## Application for Certification

- (1) Manufacturer: Dynastream Innovations, Inc.  
#201, 100 Grande Blvd.  
Cochrane, Alberta T4C 0S4, Canada  
Telephone: (403) 932-9292
- (2) Identification: FCC I.D.: O6R02162 IC: 3797A-02162
- (3) Copy of the installation and operating manual: Refer to exhibit for Draft Instruction Manual.
- (4) Description of Circuit Functions, Device Operation: Refer to operational description exhibit for circuit device operation.
- (5) Block Diagram with Frequencies: Refer to exhibit for Block Diagram
- (6) Report of measurements demonstrating compliance with the pertinent FCC/IC technical requirements provided in this report.
- (7) Photographs of equipment are provided in other application exhibits.
- (8) Peripheral equipment or accessories for the equipment. The EUT offers no optional equipment or interface capabilities.
- (9) Transition Provisions of 15.37 are not being requested
- (10) The equipment is not a scanning receiver.
- (11) The equipment is not a transmitter operating in the 59-64 GHz frequency range.
- (12) The equipment is not software defined and this section is not applicable.

## Statement of Modifications and Deviations

No modifications to the EUT were required for the unit to demonstrate compliance with the CFR47 Part 15C and RSS-210 requirements. There were no modifications or deviations to the specifications.

## Applicable Standards & Test Procedures

In accordance with the Federal Communications Commission and Code of Federal Regulations CFR 47, dated October 1, 2012, Part 2, Subpart J, Paragraphs 2.907, 2.911, 2.913, 2.925, 2.926, 2.1031 through 2.1057, applicable parts of paragraph 15, Part 15C paragraph 15.249, and Industry Canada RSS-210, the following information is submitted. Test procedures used are the established Methods of Measurement of Radio-Noise Emissions as described in the ANSI C63.4-2009 Document.

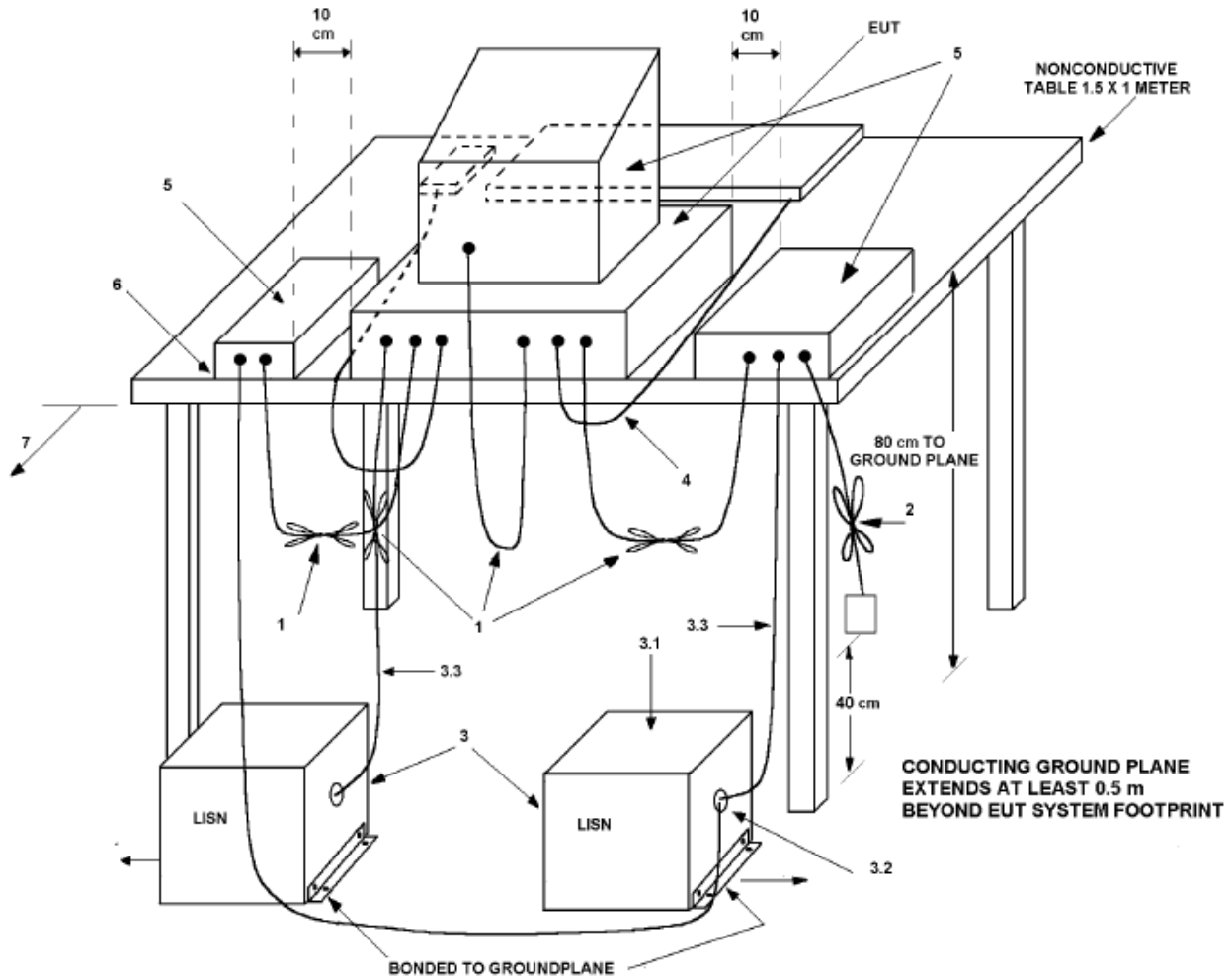
## Equipment Testing Procedures

### *AC Line Conducted Emission Test Procedure*

The EUT operates solely from direct current power and offers no provision for connection to utility AC power systems. Therefore, no AC power line conducted emissions test was required or performed. If required, the manufacturer supplied AC connection would be used to power the EUT. Testing for the AC line-conducted emissions testing would be performed as defined in sections 7 and 13.1.3 of ANSI C63.4-2009. The test setup including the EUT would be arranged in typical equipment configurations and placed on a 1 x 1.5-meter wooden bench, 0.8 meters high located in a screen room. The power lines of the system would be isolated from the power source using a standard LISN with a 50- $\mu$ Hy choke. EMI was coupled to the spectrum analyzer through a 0.1  $\mu$ F capacitor internal to the LISN. The LISN would be positioned on the floor beneath the wooden bench supporting the EUT. The power lines and cables would be draped over the back edge of the table. Refer to diagram 1 showing typical test arrangement and photographs in the test setup exhibits for specific EUT placement during testing.



**Diagram 1 Test arrangement for Conducted emissions**

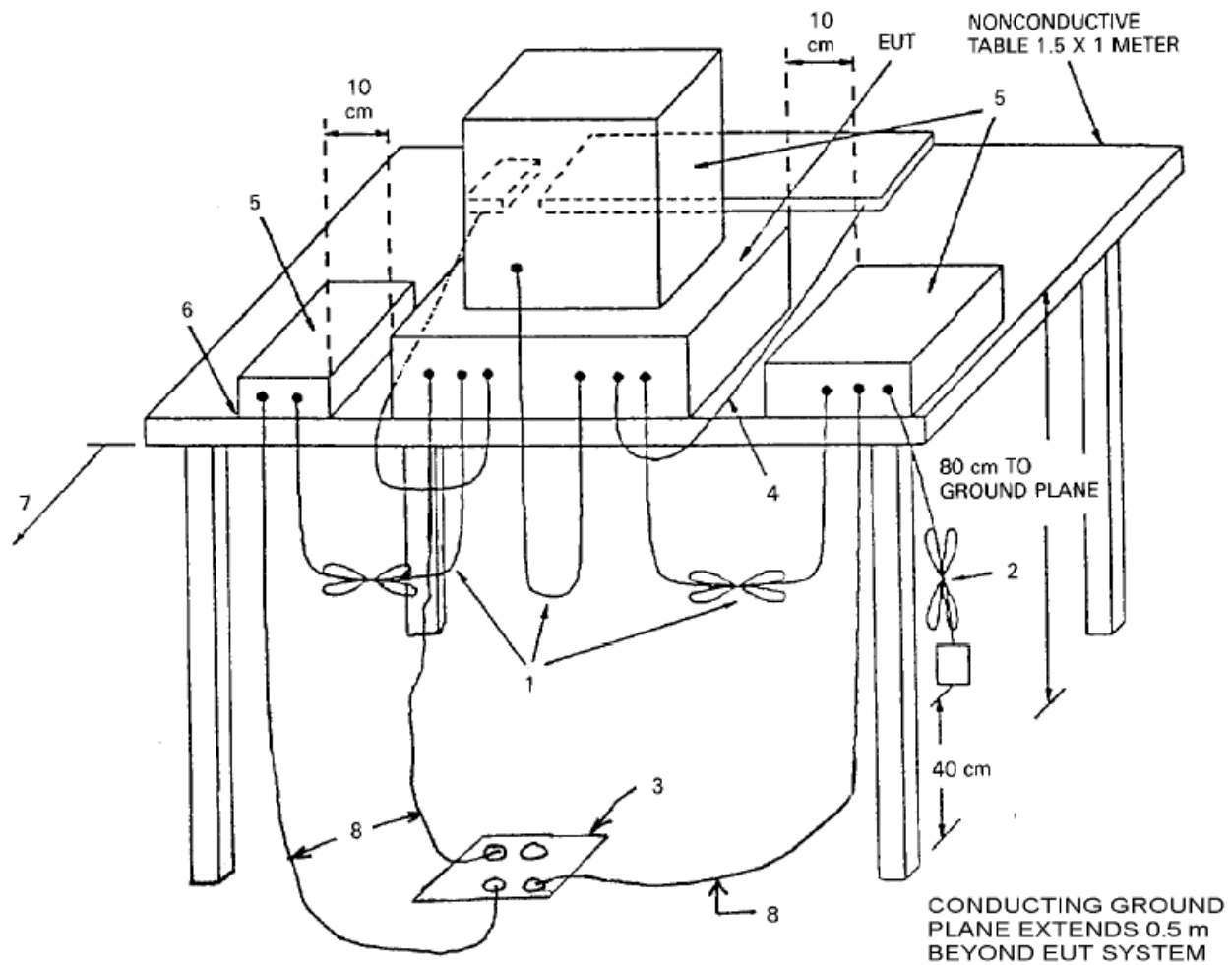


1. Interconnecting cables that hang closer than 40 cm to the ground plane were folded back and forth in the center forming a bundle 30 cm to 40 cm long.
2. Input/output (I/O) cables that are not connected to a peripheral shall be bundled in the center. The end of the cable may be terminated, if required, using the correct terminating impedance. The overall length shall not exceed 1 m.
3. EUT connected to one LISN. Unused LISN measuring port connectors are terminated into 50  $\Omega$  loads. LISN is placed on top of and bonded to reference ground plane.
  - 3.1 All other equipment powered from additional LISN(s).
  - 3.2 Multiple outlet strips can be used for multiple power cords of non-EUT equipment.
  - 3.3 LISN is positioned at least 80 cm from nearest part of EUT chassis.
4. Cables of hand-operated devices, such as keyboards, mice, and so on, shall be placed as for normal use.
5. Non-EUT components of EUT system being tested.
6. Rear of EUT, including peripherals, shall all be aligned and flush with rear of tabletop.
7. Rear of tabletop shall be 40 cm removed from a vertical conducting plane that is bonded to the ground plane (see 5.2.2 for options).

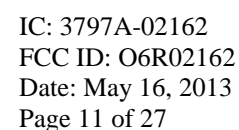
## Radiated Emission Test Procedure

The EUT was placed on a rotating 1 x 1.5-meter wooden platform, 0.8 meters above the ground plane at a distance of 3 meters from the FSM antenna. Radiated emissions testing was performed as required in CFR47 15, RSS-210 and specified in sections 8 and 13.1.4 of ANSI C63.4-2009. EMI energy was maximized by equipment placement, raising and lowering the FSM antenna, changing the antenna polarization, and by rotating the turntable. Each emission was maximized before data was taken using a spectrum analyzer. The frequency spectrum from 9 kHz to 25,000 MHz was searched for during preliminary investigation. Refer to diagrams 2 and 3 showing typical test arrangement and photographs in the test setup exhibits for specific EUT placement during testing.

**Diagram 2 Test arrangement for radiated emissions of tabletop equipment**



- Diagram 3 Test arrangement for radiated emissions tested on Open Area Test Site (OATS)**





## Test Site Locations

Conducted EMI	The AC power line conducted emissions testing performed in a shielded screen room located at Rogers Labs, Inc., 4405 W. 259 <sup>th</sup> Terrace, Louisburg, KS
Radiated EMI	The radiated emissions tests were performed at the 3 meters, Open Area Test Site (OATS) located at Rogers Labs, Inc., 4405 W. 259 <sup>th</sup> Terrace, Louisburg, KS
Site Registration	Refer to Annex for Site Registration Letters
NVLAP Accreditation	Lab code 200087-0

## Units of Measurements

Conducted EMI	Data is in dB $\mu$ V; dB referenced to one microvolt
Radiated EMI	Data is in dB $\mu$ V/m; dB/m referenced to one microvolt per meter

### Sample Calculation:

RFS = Radiated Field Strength, FSM = Field Strength Measured

A.F. = Receive antenna factor, Gain = amplification gains and/or cable losses

$RFS (dB\mu V/m @ 3m) = FSM (dB\mu V) + A.F. (dB) - Gain (dB)$

## Environmental Conditions

Ambient Temperature	21.2° C
Relative Humidity	33%
Atmospheric Pressure	1015.6 mb

## List of Test Equipment

A Rohde and Schwarz ESU40 and/or Hewlett Packard 8591EM was used as the measuring device for the emissions testing of frequencies below 1 GHz. A Rohde and Schwarz ESU40 and/or Hewlett Packard 8562A Spectrum Analyzer was used as the measuring device for testing the emissions at frequencies above 1 GHz. The analyzer settings used are described in the following table. Refer to the appendix for a complete list of test equipment.

AC Line Conducted Emissions (0.150 -30 MHz)		
RBW	AVG. BW	Detector Function
9 kHz	30 kHz	Peak / Quasi Peak
Emissions (30-1000 MHz)		
RBW	AVG. BW	Detector Function
120 kHz	300 kHz	Peak / Quasi Peak
Emissions (Above 1000 MHz)		
RBW	Video BW	Detector Function
100 kHz	100 kHz	Peak
1 MHz	1 MHz	Peak / Average

<u>Equipment</u>	<u>Manufacturer</u>	<u>Model</u>	<u>Band</u>	<u>Cal Date</u>	<u>Due</u>
<input type="checkbox"/> LISN	Comp. Design	FCC-LISN-2-MOD.CD	.15-30MHz	10/12	10/13
<input type="checkbox"/> Antenna	ARA	BCD-235-B	20-350MHz	10/12	10/13
<input type="checkbox"/> Antenna	EMCO	3147	200-1000MHz	10/12	10/13
<input checked="" type="checkbox"/> Antenna	Com Power	AH-118	1-18 GHz	10/12	10/13
<input checked="" type="checkbox"/> Antenna	Com Power	AH-840	18-40 GHz	10/12	10/13
<input checked="" type="checkbox"/> Antenna	Sunol	JB-6	30-1000 MHz	10/12	10/13
<input checked="" type="checkbox"/> Amplifier	Com-Power	PA-010	100Hz-30MHz	10/12	10/13
<input checked="" type="checkbox"/> Amplifier	Com-Power	CPPA-102	1-1000 MHz	10/12	10/13
<input checked="" type="checkbox"/> Amplifier	Com-Power	PA-22	0.5-22 GHz	10/12	10/13
<input checked="" type="checkbox"/> Antenna	EMCO	6509	.001-30 MHz	10/12	10/13
<input checked="" type="checkbox"/> Antenna	Standard	FXRY638A	10-18 GHz	3/12	5/13
<input type="checkbox"/> Antenna	EMCO	3143	20-1200 MHz	5/12	5/13
<input type="checkbox"/> Analyzer	HP	8591EM	9kHz-1.8GHz	5/12	5/13
<input type="checkbox"/> Analyzer	HP	8562A	9kHz-110GHz	5/12	5/13
<input checked="" type="checkbox"/> Analyzer	Rohde & Schwarz	ESU40	20Hz-40GHz	5/12	5/13

## Intentional Radiators

### ***Antenna Requirements***

The unit is produced with permanently attached transmitter antenna located inside the sealed case. No provisions for modification or alterations of the antenna configuration are available to the end user. The EUT demonstrates compliance with the unique antenna connection requirements of 47CFR 15.203 and other relevant standards. There are no deviations or exceptions to the specification.

### ***Restricted Bands of Operation***

Spurious emissions falling in the restricted frequency bands of operation were measured at the OATS. The EUT utilizes frequency, determining circuitry, which generates harmonics falling in the restricted bands. Emissions were investigated at the OATS, using appropriate antennas or pyramidal horns, amplification stages, and receiver/spectrum analyzer. Peak and average amplitudes of frequencies above 1000 MHz were compared to the required limits with worst-case data presented below. Test procedures of ANSI C63.4-2009 paragraphs 13.1 and 8.3.1.2 were used during testing. No other significant emission was observed which fell into the restricted bands of operation. Computed emission values take into account the received radiated field strength, receive antenna correction factor, amplifier gain stage, and test system cable losses.

Radiated Emissions Calculations:

RFS = Radiated Field Strength

FSM = Field Strength Measured

A.F. = Receive antenna factor

Gain = amplification gains and/or cable losses

$RFS (dB\mu V/m @ 3m) = FSM (dB\mu V) + A.F. (dB) - Gain (dB)$

$Field Strength (dB\mu V/m @ 3m) = FSM (dB\mu V) + A.F. (dB) + cable loss - Amp Gain (dB)$

**Table 1 Radiated Emissions in Restricted Bands Data**

Frequency in MHz	Horizontal Peak (dBμV/m)	Horizontal Quasi-Peak (dBμV/m)	Horizontal Average (dBμV/m)	Vertical Peak (dBμV/m)	Vertical Quasi-Peak (dBμV/m)	Vertical Average (dBμV/m)	Limit @ 3m (dBμV/m)
2390.0	42.2	N/A	29.3	48.7	N/A	26.7	54.0
2483.5	46.9	N/A	31.1	58.3	N/A	37.3	54.0
4804.0	45.0	N/A	33.5	46.5	N/A	36.7	54.0
4914.0	46.4	N/A	33.8	47.8	N/A	36.4	54.0
4960.0	48.6	N/A	38.1	47.8	N/A	35.8	54.0
7206.0	49.5	N/A	36.6	49.1	N/A	36.4	54.0
7371.0	48.1	N/A	35.1	47.3	N/A	35.0	54.0
7440.0	48.7	N/A	36.2	48.9	N/A	36.3	54.0
12010.0	49.7	N/A	36.3	49.4	N/A	36.3	54.0
12285.0	47.8	N/A	35.0	47.7	N/A	35.5	54.0
12400.0	50.4	N/A	37.4	49.5	N/A	37.0	54.0
2390.0	42.2	N/A	29.3	48.7	N/A	26.7	54.0

Other emissions present had amplitudes at least 20 dB below the limit. Peak and Quasi-Peak amplitude emissions are recorded for frequencies below 1000 MHz. Peak and Average amplitude emissions are recorded for frequencies above 1000 MHz.

### ***Summary of Results for Radiated Emissions in Restricted Bands***

The EUT demonstrated compliance with the radiated emissions requirements of 47CFR Part 15.205 and RSS-210 restricted bands of operation. The EUT worst-case configuration demonstrated minimum margin of -15.9 dB below the 47CFR and RSS-210 limits. Other emissions were present with amplitudes at least 20 dB below the required limits.



## ***General Radiated EMI Testing Procedure***

EUT radiated emissions were investigated while arranged in all typical equipment configurations and operated through all applicable modes. Preliminary testing was performed in a screen room with the EUT positioned 1 meter from the FSM. Investigations were performed to identify the frequencies, which produced the highest radiated emissions. Radiated emission investigations were performed from 9 kHz to 25,000 MHz with the EUT positioned through three orthogonal axes per regulations. Frequencies of interest were recorded for use during testing on the OATS. Each emission was then maximized at the OATS site before final radiated emissions measurements were performed. Final data was taken with the EUT located at the open field test site at a distance of 3 meters between the EUT and the receiving antenna. Test procedures of ANSI C63.4-2009 paragraphs 13.1 and 8.3.1.2 were used during radiated emissions testing. Peak and average amplitudes of frequencies above 1000 MHz were compared to the required limits with worst-case data presented below. Measured emission levels were maximized by EUT placement on the table, changing cable location, rotating the turntable through 360 degrees, varying the antenna height between 1 and 4 meters above the ground plane and changing antenna polarization between horizontal and vertical. Antennas used were Loop from 0.09 to 30 MHz, Broadband Biconical from 30 MHz to 200 MHz, Log Periodic from 200 MHz to 1 GHz, and/or Biconilog from 30 MHz to 1000 MHz, Double-Ridge, and/or Pyramidal Horns from 1 GHz to 25 GHz, and amplification stages.



**Table 3 General Radiated Emissions Data (worst-case)**

Frequency in MHz	Horizontal Peak (dBμV/m)	Horizontal Quasi-Peak (dBμV/m)	Horizontal Average (dBμV/m)	Vertical Peak (dBμV/m)	Vertical Quasi-Peak (dBμV/m)	Vertical Average (dBμV/m)	Limit @ 3m (dBμV/m)
2390.0	42.2	N/A	29.3	48.7	N/A	26.7	54
2400.0	53.2	N/A	30.8	65.1	N/A	39.6	54
2483.5	46.9	N/A	31.1	58.3	N/A	37.3	54

Other emissions present had amplitudes at least 20 dB below the limit. Peak and Quasi-Peak amplitude emissions are recorded for frequencies below 1000 MHz. Peak and Average amplitude emissions are recorded for frequencies above 1000 MHz.

### **Summary of Results for General Radiated Emissions**

The EUT demonstrated compliance with the general radiated emissions requirements of 47CFR Part 15C, RSS-210 and other applicable standards for Intentional Radiators. The EUT worst-case configuration demonstrated minimum margin of at least -14.4 dB below the general radiated emissions limit. Other emissions were present with amplitudes at least 20 dB below the Limits.

### **Operation in the Band 2,400-2,483.5 MHz**

The transmitter output power; harmonic and general emissions were measured on an open area test site @ 3 meters. Test procedures of ANSI C63.4-2009 paragraphs 13.1 and 8.3.1.2 were used during testing. The EUT was placed on a wooden turntable 0.8 meters above the ground plane and at a distance of 3 meters from the FSM antenna. The peak and quasi-peak amplitude of frequencies below 1000 MHz were measured using a spectrum analyzer. The peak and average amplitude of frequencies above 1000 MHz were measured using a spectrum analyzer. The amplitude of each emission was then recorded from the analyzer display. Emissions radiated outside of the specified bands, except for harmonics, shall be attenuated by at least 50 dB below the level of the fundamental or to the general radiated emission limits in 15.209, whichever is the lesser attenuation. Plots were made of the transmitter operation at test antenna port of sample #2 for reference in this and other documentation. Refer to figures one through four demonstrating operation across the frequency band as displayed on the spectrum analyzer. The amplitude of each radiated emission was measured on the OATS at a distance of 3 meters from the FSM. The amplitude of each radiated emission was maximized by varying the FSM antenna height, polarization, and by rotating the turntable. A Loop antenna was used for measuring emissions from 0.009 to 30 MHz, Biconilog Antenna for 30 to 1000 MHz, Double-Ridge, and/or Pyramidal Horn Antennas from 1 GHz to 25 GHz. Emissions were measured in dBμV/m @ 3 meters.

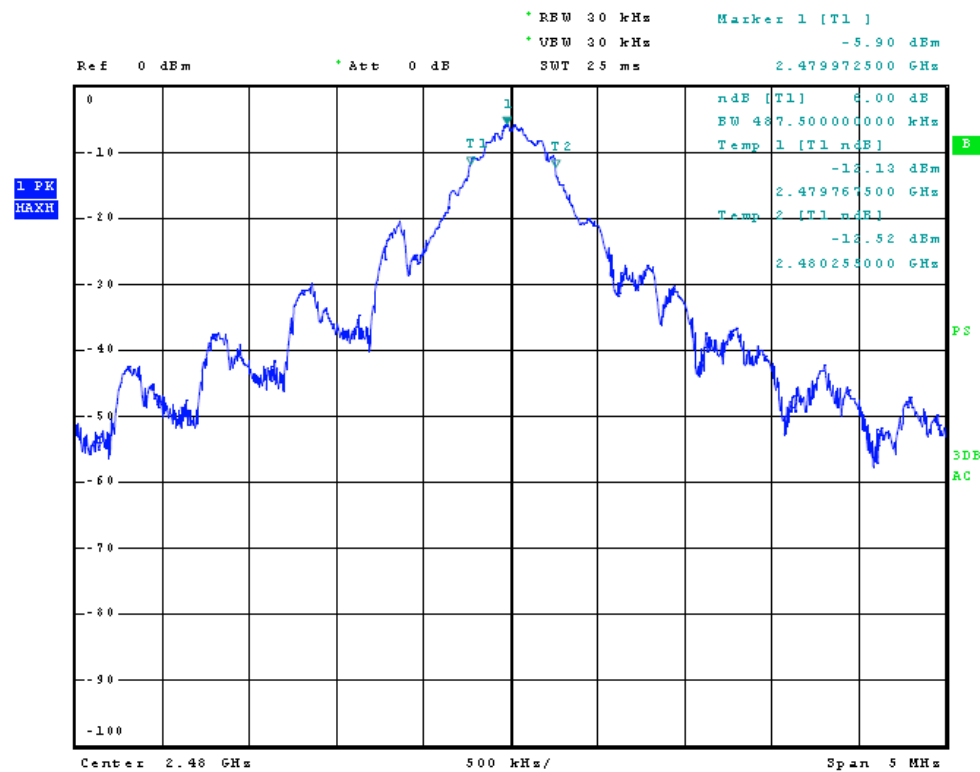


Figure 1 Representative plot of Occupied Bandwidth (low channel)

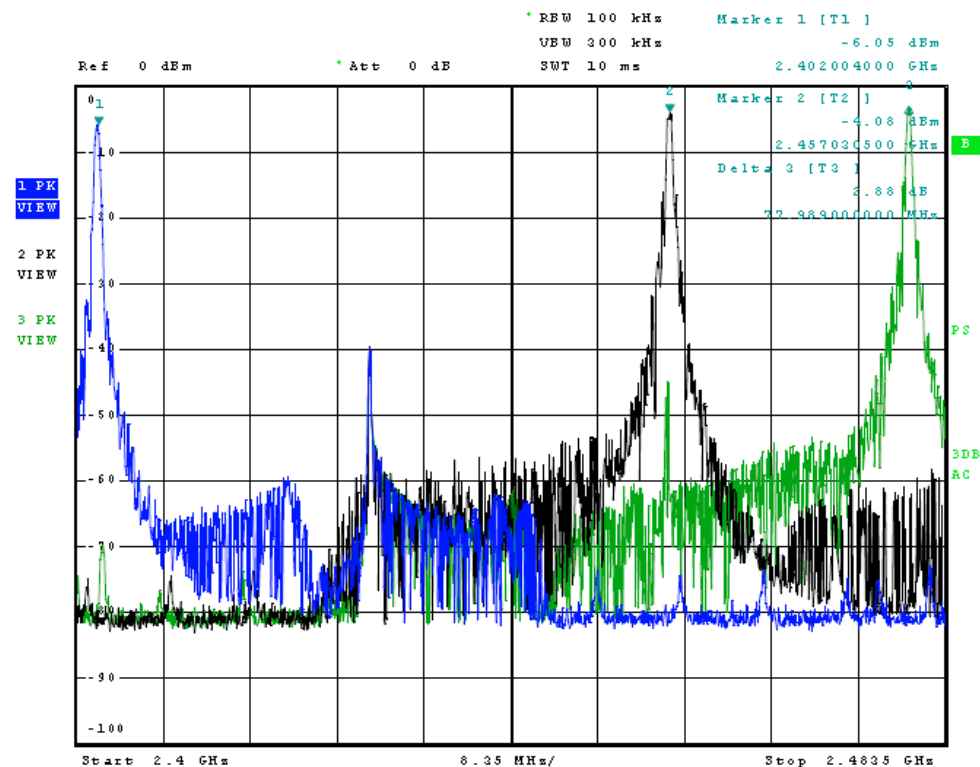


Figure 2 Operation across frequency band

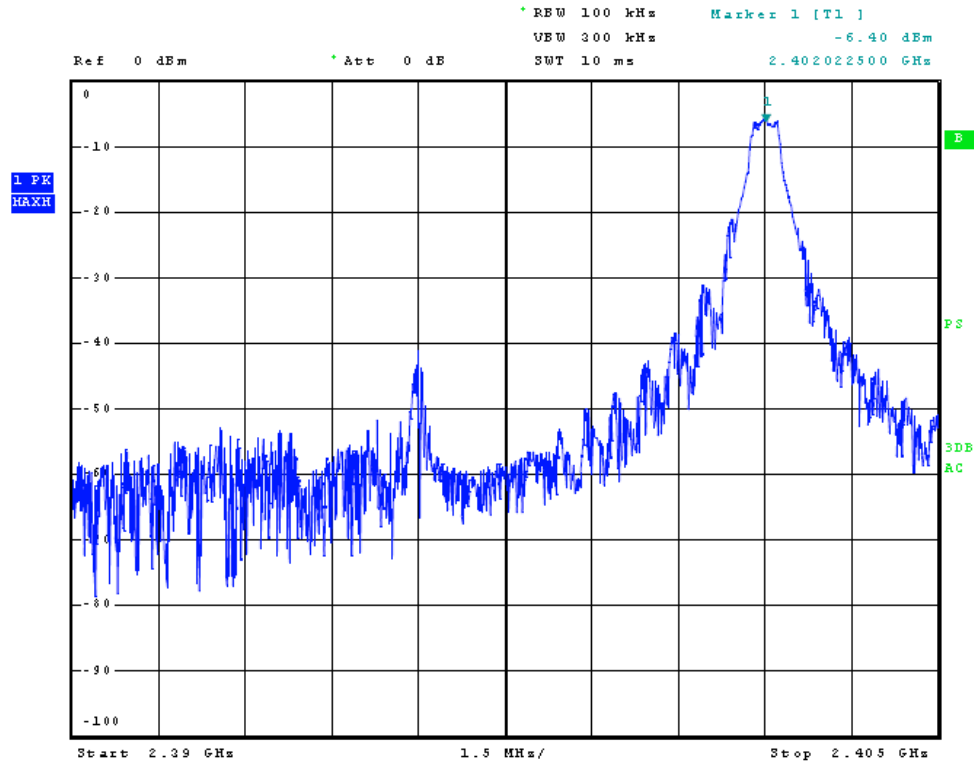


Figure 3 Low Frequency Band Edge

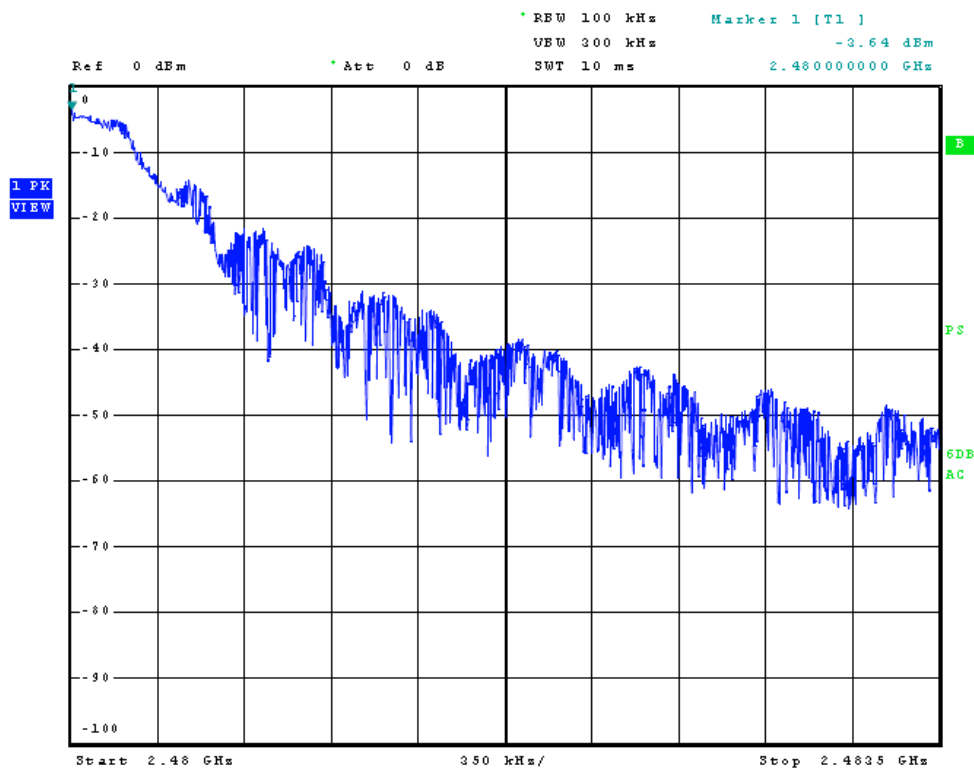


Figure 4 High Frequency Band Edge

## Transmitter Radiated Emissions Data

**Table 4 Transmitter Radiated Emissions Data**

Frequency in MHz	Horizontal Peak (dBμV/m)	Horizontal Quasi-Peak (dBμV/m)	Horizontal Average (dBμV/m)	Vertical Peak (dBμV/m)	Vertical Quasi-Peak (dBμV/m)	Vertical Average (dBμV/m)	Limit @ 3m (dBμV/m)
2402.0	80.7	N/A	77.9	91.5	N/A	90.3	94.0
4804.0	45.0	N/A	33.5	46.5	N/A	36.7	54.0
7206.0	49.5	N/A	36.6	49.1	N/A	36.4	54.0
9608.0	49.9	N/A	36.9	50.2	N/A	36.9	54.0
12010.0	49.7	N/A	36.3	49.4	N/A	36.3	54.0
14412.0	55.5	N/A	43.2	55.5	N/A	43.1	54.0
2457.0	78.7	N/A	72.5	95.1	N/A	89.3	94.0
4914.0	46.4	N/A	33.8	47.8	N/A	36.4	54.0
7371.0	48.1	N/A	35.1	47.3	N/A	35.0	54.0
9828.0	50.0	N/A	37.4	50.2	N/A	37.5	54.0
12285.0	47.8	N/A	35.0	47.7	N/A	35.5	54.0
14742.0	58.2	N/A	45.6	58.2	N/A	45.9	54.0
2480.0	82.0	N/A	80.4	94.9	N/A	93.7	94.0
4960.0	48.6	N/A	38.1	47.8	N/A	35.8	54.0
7440.0	48.7	N/A	36.2	48.9	N/A	36.3	54.0
9920.0	49.3	N/A	36.6	49.4	N/A	36.6	54.0
12400.0	50.4	N/A	37.4	49.5	N/A	37.0	54.0
14880.0	54.5	N/A	41.9	54.9	N/A	41.7	54.0

Other emissions present had amplitudes at least 20 dB below the limit. Peak and Quasi-Peak amplitude emissions are recorded for frequencies below 1000 MHz. Peak and Average amplitude emissions are recorded for frequencies above 1000 MHz.



### ***Summary of Results for Transmitter Radiated Emissions***

The EUT demonstrated compliance with the radiated emissions requirements of 47CFR Part 15.249, RSS-210 and other applicable standards for Intentional Radiators. The EUT worst-case configuration demonstrated minimum margin of -3.7 dB below the average limit. The EUT worst-case configuration demonstrated minimum radiated harmonic emission margin of -8.1 dB below the limits. No other radiated emissions were found in the restricted bands less than 20 dB below limits than those recorded in this report. Other emissions were present with amplitudes at least 20 dB below the limits.



NVLAP Lab Code 200087-0

## **Annex**

- Annex A Measurement Uncertainty Calculations
- Annex B Rogers Labs Test Equipment List
- Annex C Rogers Qualifications
- Annex D FCC Test Site Registration Letter
- Annex E Industry Canada Test Site Registration Letter

## Annex A Measurement Uncertainty Calculations

Measurement uncertainty calculations were made for the laboratory. Result of measurement uncertainty calculations are recorded below for AC line conducted and radiated emission measurements.

Measurement Uncertainty	$U_{(E)}$	$U_{(lab)}$
3 Meter Horizontal 30-200 MHz Measurements	2.08	4.16
3 Meter Vertical 30-200 MHz Measurements	2.16	4.33
3 Meter Vertical Measurements 200-1000 MHz	2.99	5.97
10 Meter Horizontal Measurements 30-200 MHz	2.07	4.15
10 Meter Vertical Measurements 30-200 MHz	2.06	4.13
10 Meter Horizontal Measurements 200-1000 MHz	2.32	4.64
10 Meter Vertical Measurements 200-1000 MHz	2.33	4.66
3 Meter Measurements 1-6 GHz	2.57	5.14
3 Meter Measurements 6-18 GHz	2.58	5.16
AC Line Conducted	1.72	3.43



## **Annex B Rogers Labs Test Equipment List**

List of Test Equipment	Calibration Date
Spectrum Analyzer: Rohde & Schwarz ESU40	5/12
Spectrum Analyzer: HP 8562A, HP Adapters: 11518, 11519, and 11520	5/12
Mixers: 11517A, 11970A, 11970K, 11970U, 11970V, 11970W	
Spectrum Analyzer: HP 8591EM	5/12
Antenna: EMCO Biconilog Model: 3143	5/12
Antenna: Sunol Biconilog Model: JB6	10/12
Antenna: EMCO Log Periodic Model: 3147	10/12
Antenna: Com Power Model: AH-118	10/12
Antenna: Com Power Model: AH-840	10/12
Antenna: Antenna Research Biconical Model: BCD 235	10/12
LISN: Compliance Design Model: FCC-LISN-2.Mod.cd, 50 $\mu$ Hy/50 ohm/0.1 $\mu$ f	10/12
R.F. Preamp CPPA-102	10/12
Attenuator: HP Model: HP11509A	10/12
Attenuator: Mini Circuits Model: CAT-3	10/12
Attenuator: Mini Circuits Model: CAT-3	10/12
Cable: Belden RG-58 (L1)	10/12
Cable: Belden RG-58 (L2)	10/12
Cable: Belden 8268 (L3)	10/12
Cable: Time Microwave: 4M-750HF290-750	10/12
Cable: Time Microwave: 10M-750HF290-750	10/12
Antenna: EMCO 6509	10/12
Frequency Counter: Leader LDC825	2/13
Oscilloscope Scope: Tektronix 2230	2/13
Wattmeter: Bird 43 with Load Bird 8085	2/13
Power Supplies: Sorensen SRL 20-25, SRL 40-25, DCR 150, DCR 140	2/13
R.F. Generators: HP 606A, HP 8614A, HP 8640B	2/13
R.F. Power Amp 65W Model: 470-A-1010	2/13
R.F. Power Amp 50W M185- 10-501	2/13
R.F. Power Amp A.R. Model: 10W 1010M7	2/13
R.F. Power Amp EIN Model: A301	2/13
LISN: Compliance Eng. Model 240/20	2/13
LISN: Fischer Custom Communications Model: FCC-LISN-50-16-2-08	2/13
Antenna: EMCO Dipole Set 3121C	2/13
Antenna: C.D. B-101	2/13
Antenna: Solar 9229-1 & 9230-1	2/13
Audio Oscillator: H.P. 201CD	2/13
ELGAR Model: 1751	2/13
ELGAR Model: TG 704A-3D	2/13
ESD Test Set 2010i	2/13
Fast Transient Burst Generator Model: EFT/B-101	2/13
Field Intensity Meter: EFM-018	2/13
KEYTEK Ecat Surge Generator	2/13
Shielded Room 5 M x 3 M x 3.0 M	





## ***Annex C Rogers Qualifications***

***Scot D. Rogers, Engineer***

### **Rogers Labs, Inc.**

Mr. Rogers has approximately 17-years' experience in the field of electronics. Six years working in the automated controls industry and 6 years working with the design, development and testing of radio communications and electronic equipment.

#### **Positions Held**

Systems Engineer: A/C Controls Mfg. Co., Inc. 6 Years

Electrical Engineer: Rogers Consulting Labs, Inc. 5 Years

Electrical Engineer: Rogers Labs, Inc. Current

#### **Educational Background**

Bachelor of Science Degree in Electrical Engineering from Kansas State University

Bachelor of Science Degree in Business Administration Kansas State University

Several Specialized Training courses and seminars pertaining to Microprocessors and Software programming



NVLAP Lab Code 200087-0

**Annex D FCC Test Site Registration Letter**

**FEDERAL COMMUNICATIONS COMMISSION**

**Laboratory Division  
7435 Oakland Mills Road  
Columbia, MD 21046**

November 01, 2011

Registration Number: 90910

Rogers Labs, Inc.  
4405 West 259th Terrace,  
Louisburg, KS 66053

Attention: Scot Rogers,

Re: Measurement facility located at Louisburg  
3 & 10 meter site  
Date of Renewal: November 01, 2011

Dear Sir or Madam:

Your request for renewal of the registration of the subject measurement facility has been received. The information submitted has been placed in your file and the registration has been renewed. The name of your organization will remain on the list of facilities whose measurement data will be accepted in conjunction with applications for Certification under Parts 15 or 18 of the Commission's Rules. Please note that the file must be updated for any changes made to the facility and the registration must be renewed at least every three years.

Measurement facilities that have indicated that they are available to the public to perform measurement services on a fee basis may be found on the FCC website [www.fcc.gov](http://www.fcc.gov) under E-Filing, OET Equipment Authorization Electronic Filing, Test Firms.

Sincerely,

Phyllis Parrish  
Industry Analyst

Rogers Labs, Inc.  
4405 West 259<sup>th</sup> Terrace  
Louisburg, KS 66053  
Phone/Fax: (913) 837-3214  
Revision 1

Dynastream Innovations, Inc.  
Model: 02162  
Test #: 130417 SN: 17638  
Test to: FCC CFR 47 15.249, RSS 210  
File: Dynastream 02162 TstRpt 130417

IC: 3797A-02162  
FCC ID: O6R02162  
Date: May 16, 2013  
Page 26 of 27



NVLAP Lab Code 200087-0

## **Annex E Industry Canada Test Site Registration Letter**



Industry  
Canada

December 28, 2011

OUR FILE: 46405-3041

Submission No: 152685

Rogers Labs Inc.  
4405 West 259th Terrance  
Louisburg, KS, 66053  
USA

**Attention:** Mr. Scot D. Rogers

Dear Sir/Madame:

The Bureau has received your application for the renewal of 3/10m OATS. Be advised that the information received was satisfactory to Industry Canada. The following number(s) is now associated to the site(s) for which registration / renewal was sought ( **Site# 3041A-1** ). Please reference the appropriate site number in the body of test reports containing measurements performed on the site. In addition, please keep for your records the following information;

- The company address code associated to the site(s) located at the above address is: **3041A**

Furthermore, to obtain or renew a unique site number, the applicant shall demonstrate that the site has been accredited to ANSI C63.4-2003 or later. A scope of accreditation indicating the accreditation by a recognized accreditation body to ANSI C63.4-2003 or later shall be accepted. Please indicate in a letter the previous assigned site number if applicable and the type of site (example: 3 metre OATS or 3 metre chamber). If the test facility is not accredited to ANSI C63.4-2003 or later, the test facility shall submit test data demonstrating full compliance with the ANSI standard. The Bureau will evaluate the filing to determine if recognition shall be granted.

The frequency for re-validation of the test site and the information that is required to be filed or retained by the testing party shall comply with the requirements established by the accrediting organization. However, in all cases, test site re-validation shall occur on an interval not to **exceed three years**. There is no fee or form associated with an OATS filing. OATS submissions are encouraged to be submitted electronically to the Bureau using the following URL;

[http://strategis.ic.gc.ca/epic/internet/inceb-bhst.nsf/en/h\\_tt00052e.html](http://strategis.ic.gc.ca/epic/internet/inceb-bhst.nsf/en/h_tt00052e.html).

If you have any questions, you may contact the Bureau by e-mail at [certification.bureau@ic.gc.ca](mailto:certification.bureau@ic.gc.ca) Please reference our file and submission number above for all correspondence.

Yours sincerely,

Dalwinder Gill  
For: Wireless Laboratory Manager  
**Certification and Engineering Bureau**  
3701 Carling Ave., Building 94  
P.O. Box 11490, Station "H"  
Ottawa, Ontario K2H 8S2  
Email: [dalwinder.gill@ic.gc.ca](mailto:dalwinder.gill@ic.gc.ca)  
Tel. No. (613) 998-8363  
Fax. No. (613) 990-4752

Rogers Labs, Inc.  
4405 West 259<sup>th</sup> Terrance  
Louisburg, KS 66053  
Phone/Fax: (913) 837-3214  
Revision 1

Dynastream Innovations, Inc.  
Model: 02162  
Test #: 130417      SN: 17638  
Test to: FCC CFR 47 15.249, RSS 210  
File: Dynastream 02162 TstRpt 130417

IC: 3797A-02162  
FCC ID: O6R02162  
Date: May 16, 2013  
Page 27 of 27