

Rhein Tech Laboratories, Inc.
360 Herndon Parkway
Suite. 1400
Herndon, VA 20170
<http://www.rheintech.com>

Client: VEGA Grieshaber KG
Model: VEGAPULS WL61
FCC ID: O6QPSWL61
Standard: Part 15C
Project #: 2013239

Appendix N: Internal Photographs

Please refer to the following pages.

internal photographs:

antenna with electronic unit



antenna with connector, top view



electronic unit, HART version, front view:



electronic unit, PA version, front view:



electronic unit, FF version, front view:



electronic unit, HART version, top view:



electronic unit, PA version, top view:



electronic unit, FF version, top view:



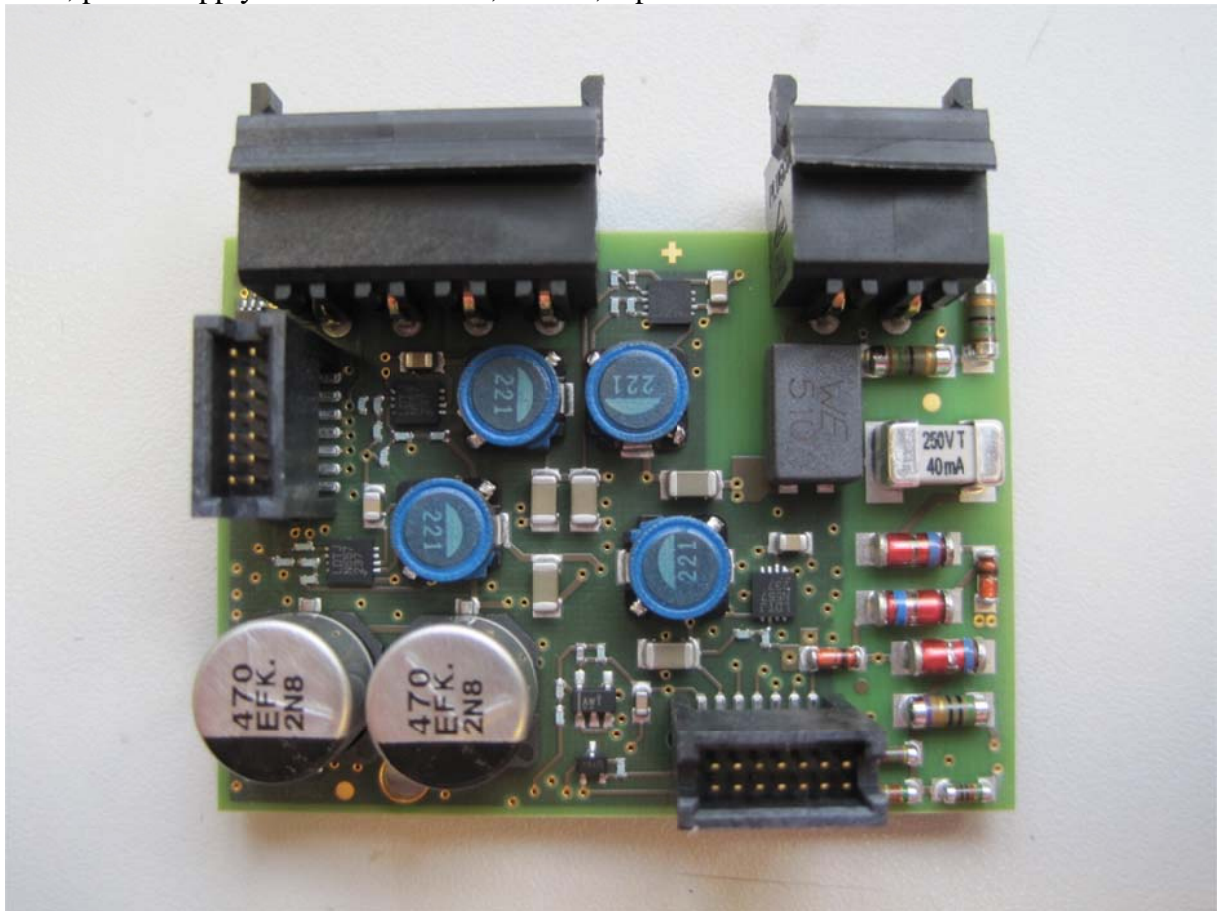
electronic unit, all versions, back view:



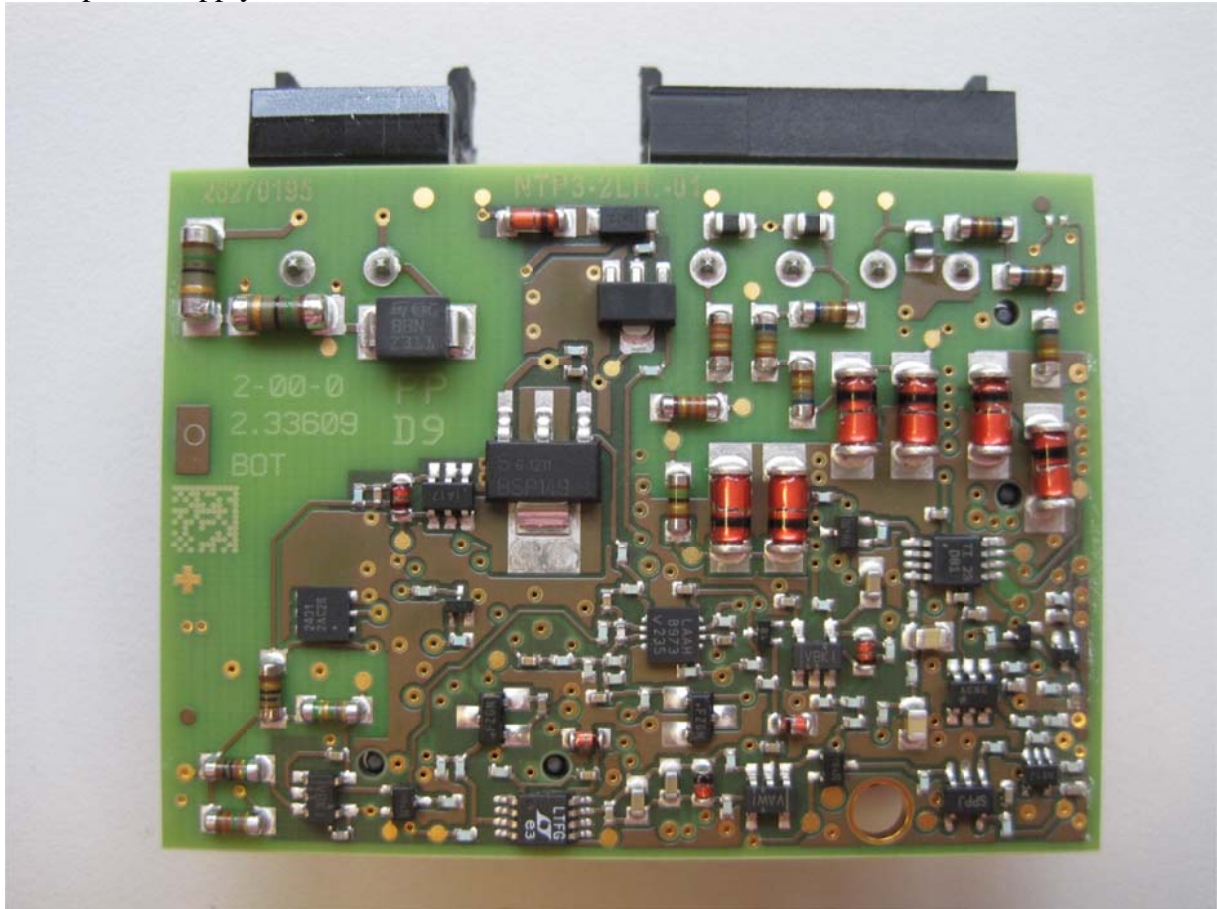
electronic unit, all versions, bottom view:



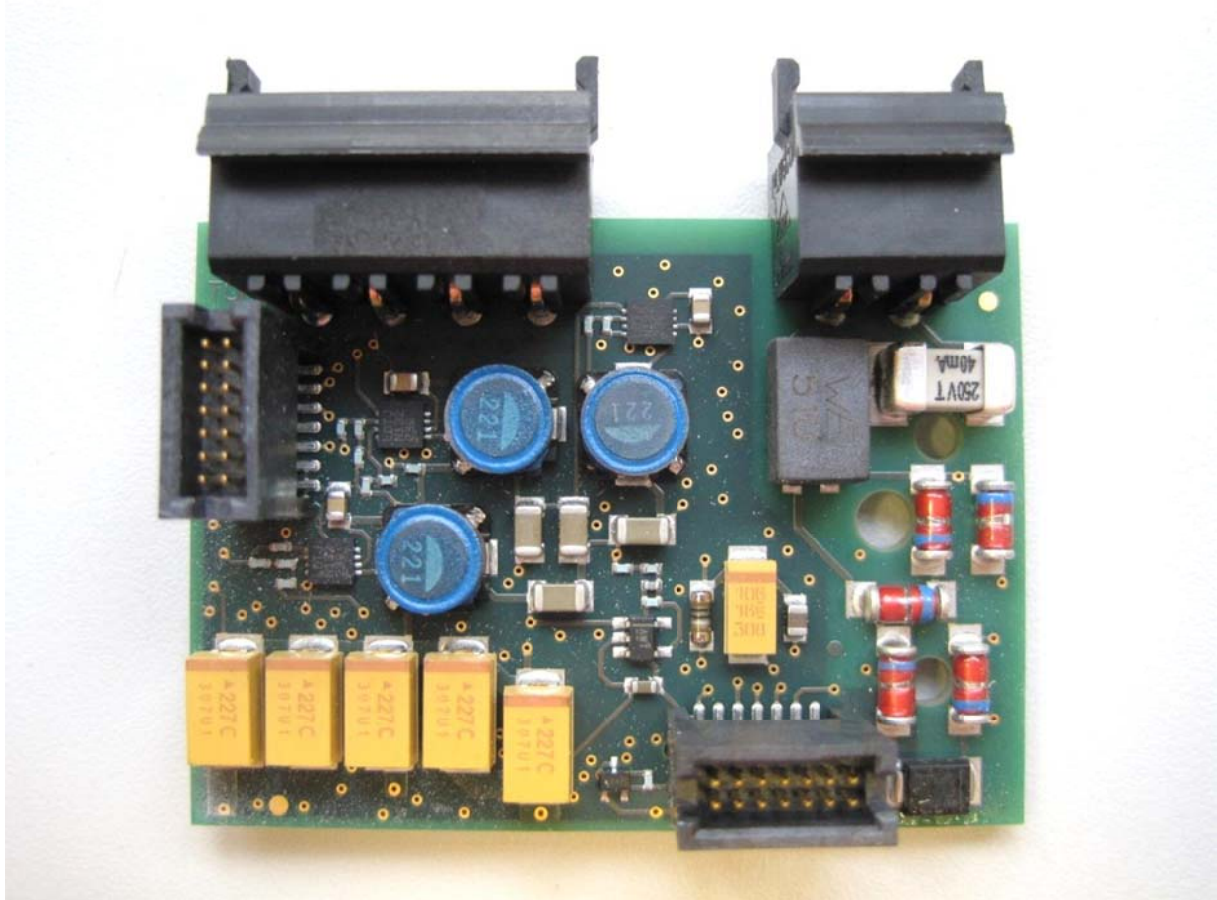
PCB, power supply board NTP3-2LH, HART, top view:



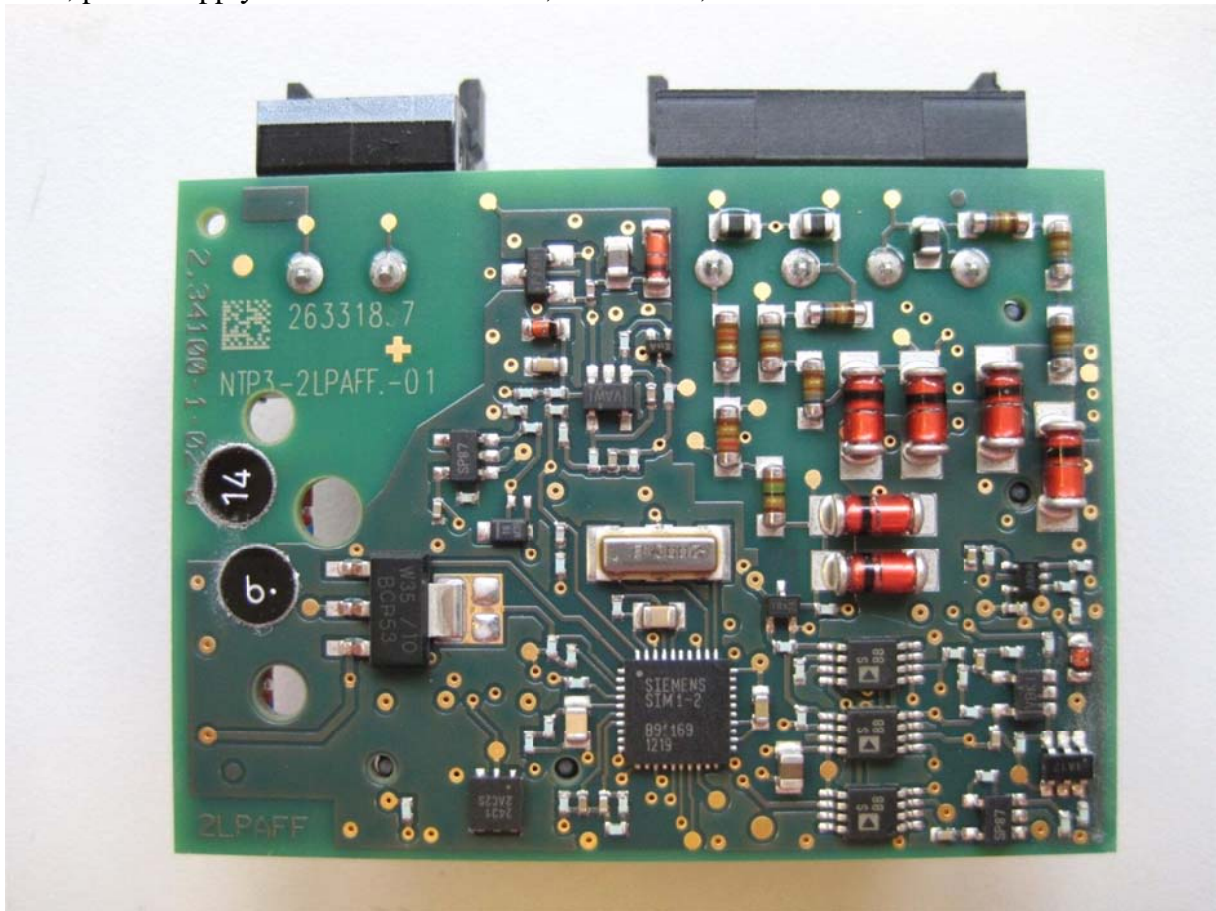
PCB, power supply board NTP3-2LH, HART, bottom view:



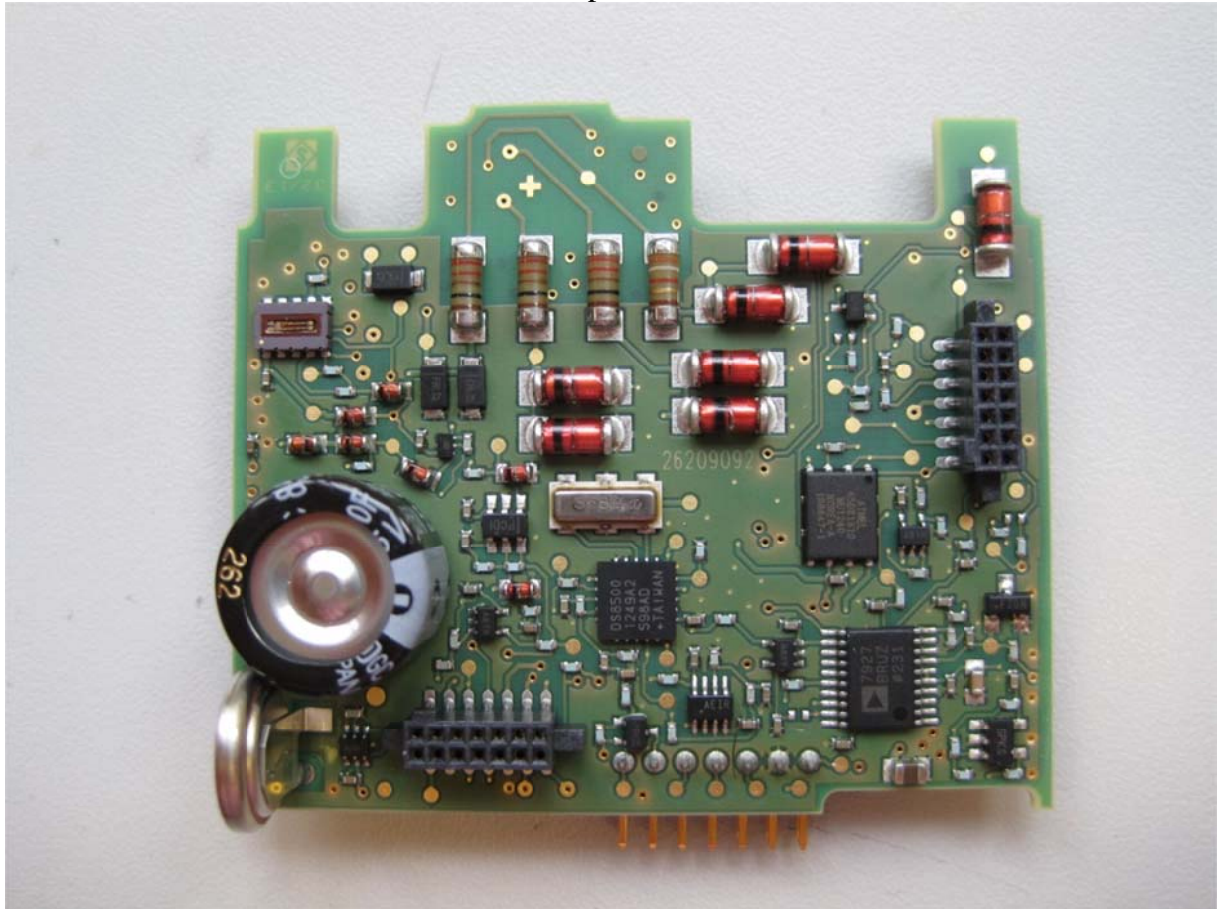
PCB, power supply board NTP3-2LPAFF, PA and FF, top view:



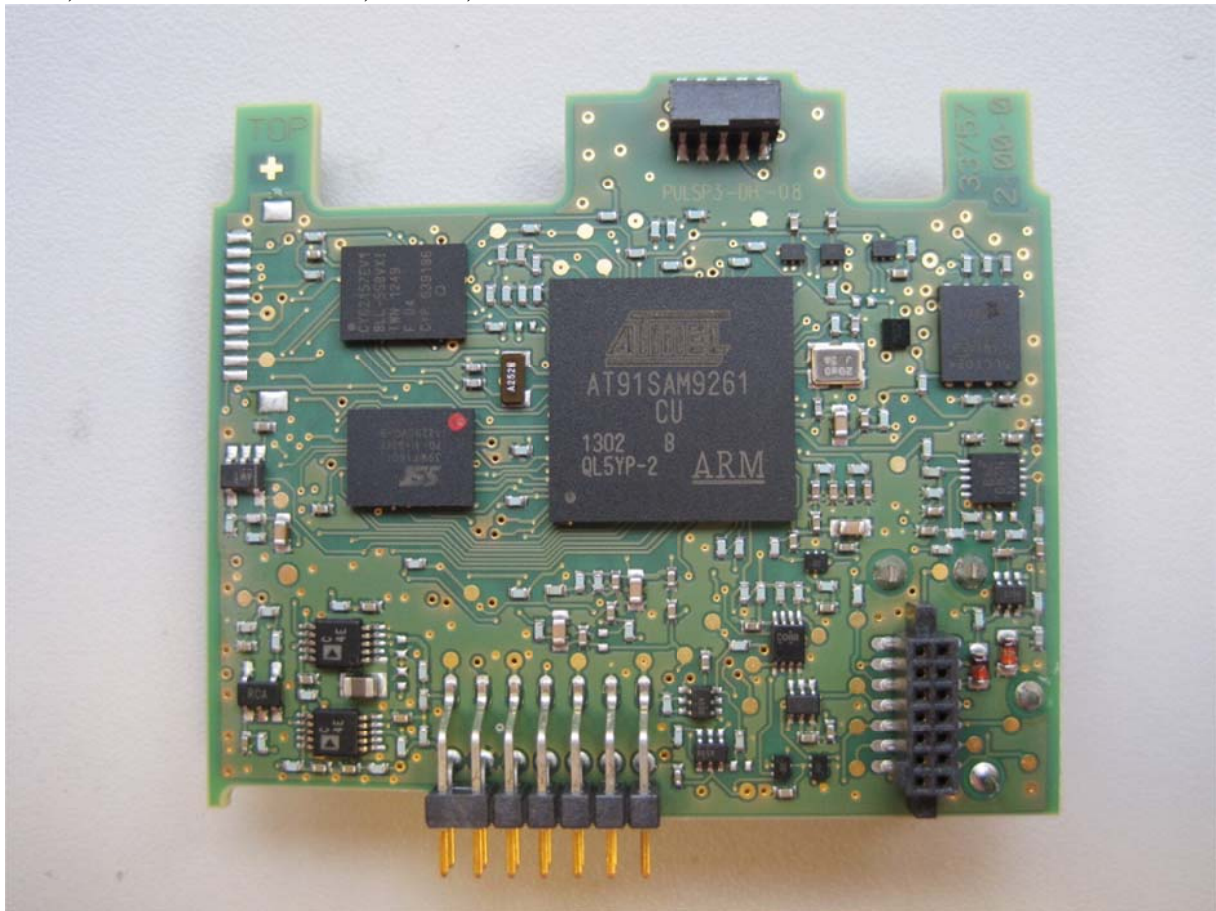
PCB, power supply board NTP3-2LPAFF, PA and FF, bottom view:



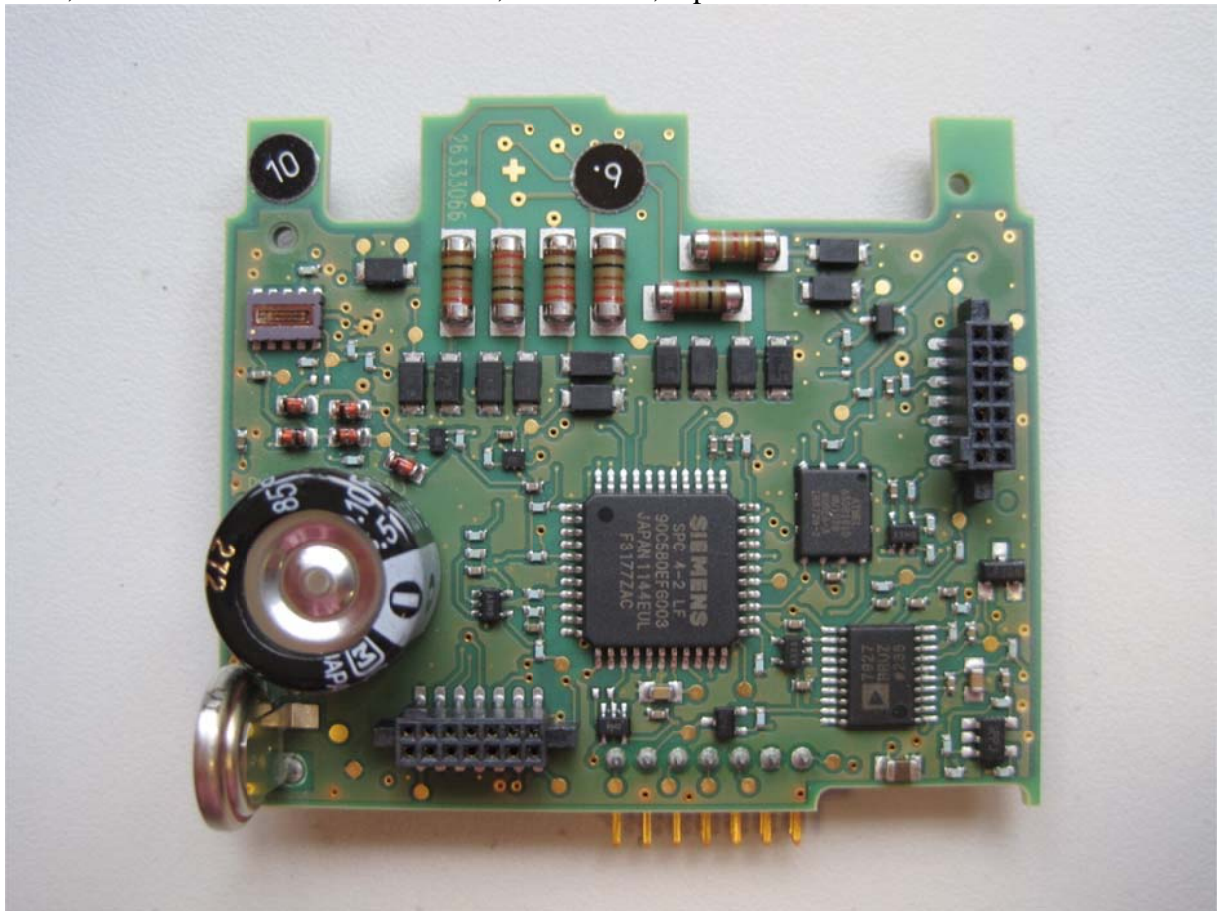
PCB, detector board PULSP3-DH, HART, top view:



PCB, detector PULSP3-DH, HART, bottom view:



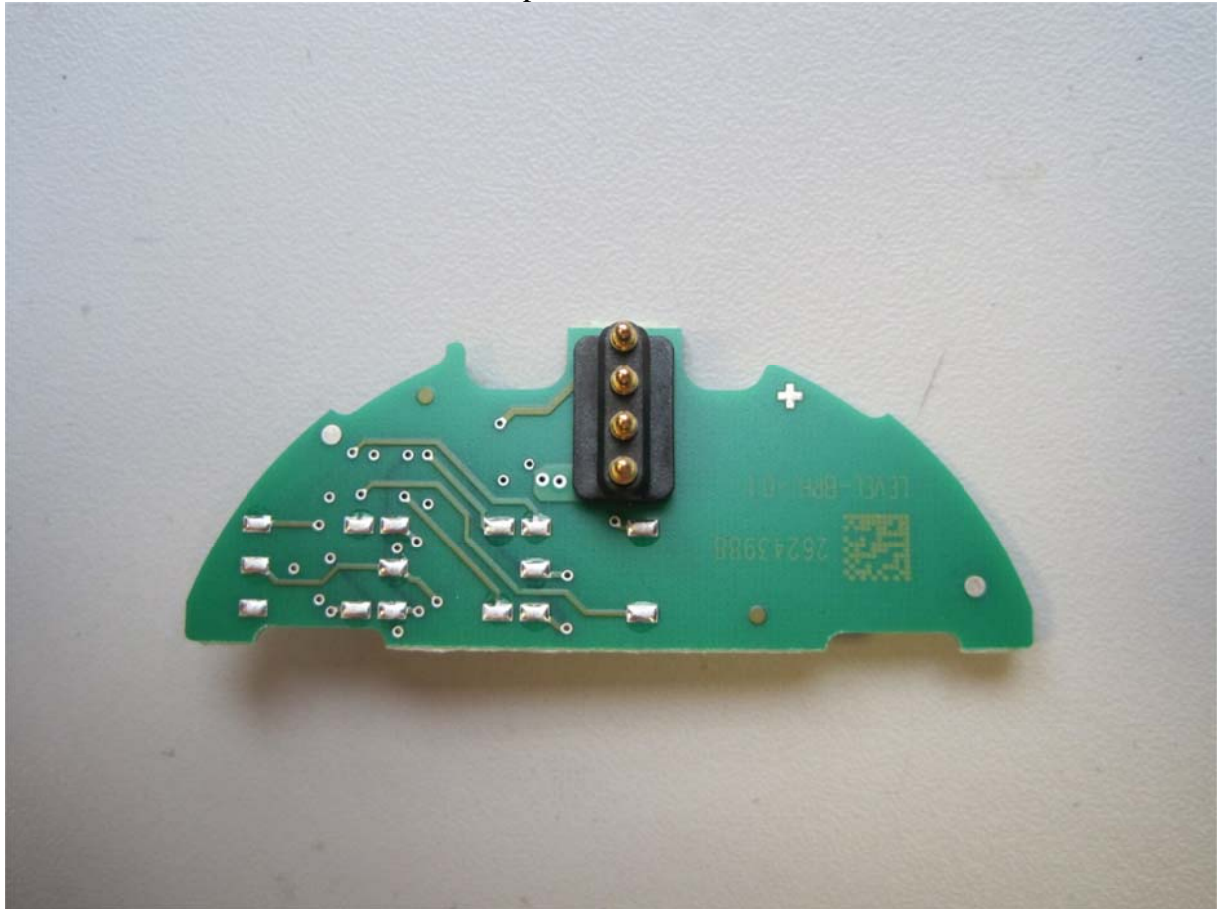
PCB, detector board PULSP3-DPAFF, PA and FF, top view:



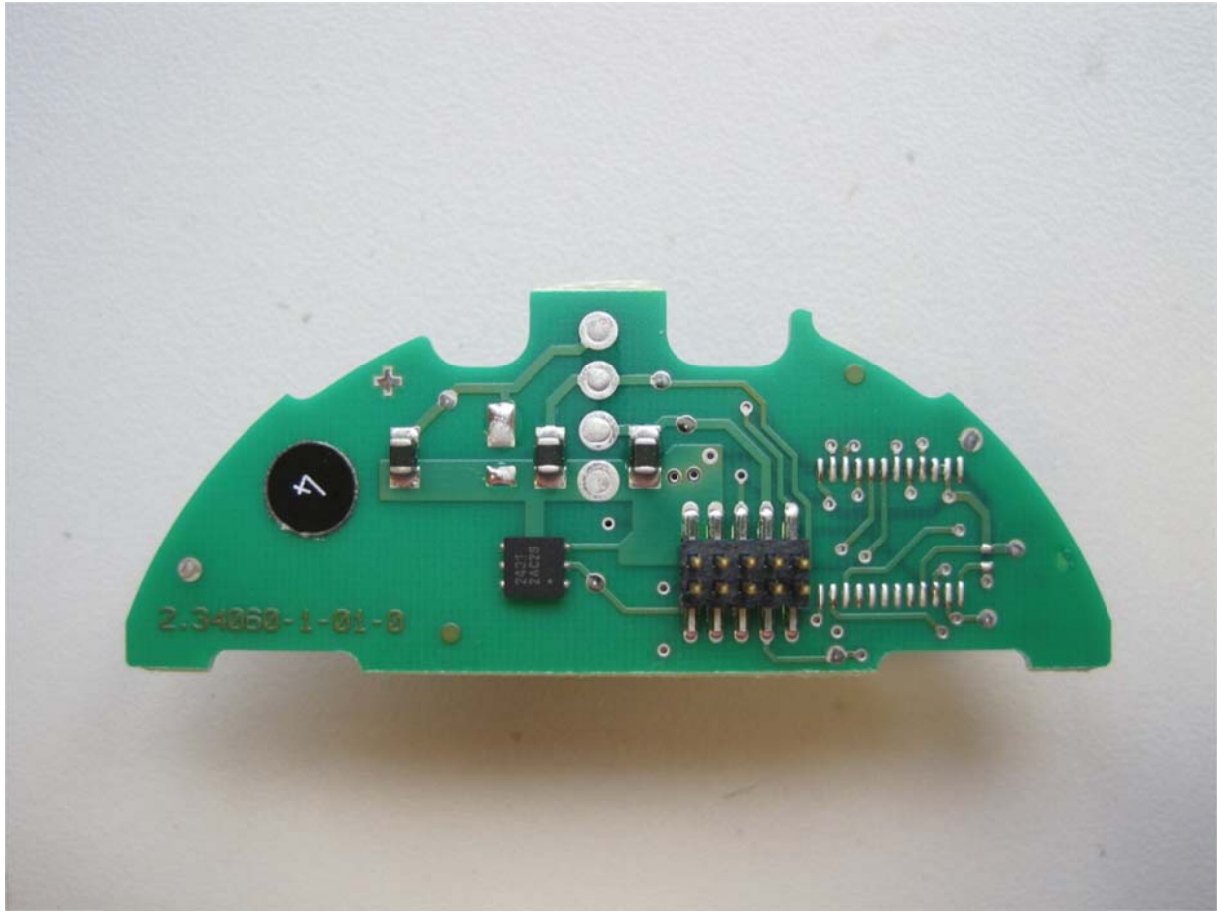
PCB, detector PULSP3-DPAFF, PA and FF, bottom view:



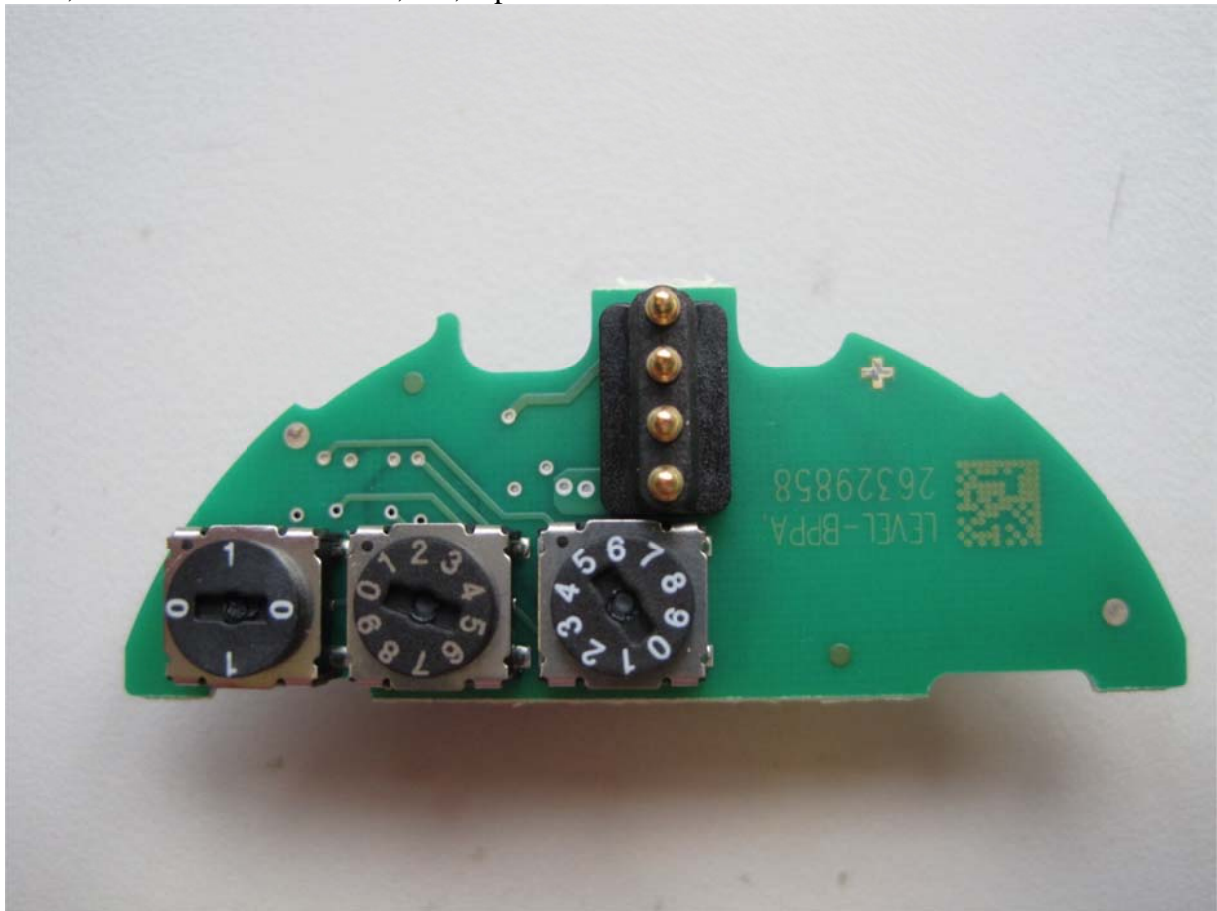
PCB, IO board LEVEL-BPH, HART, top view:



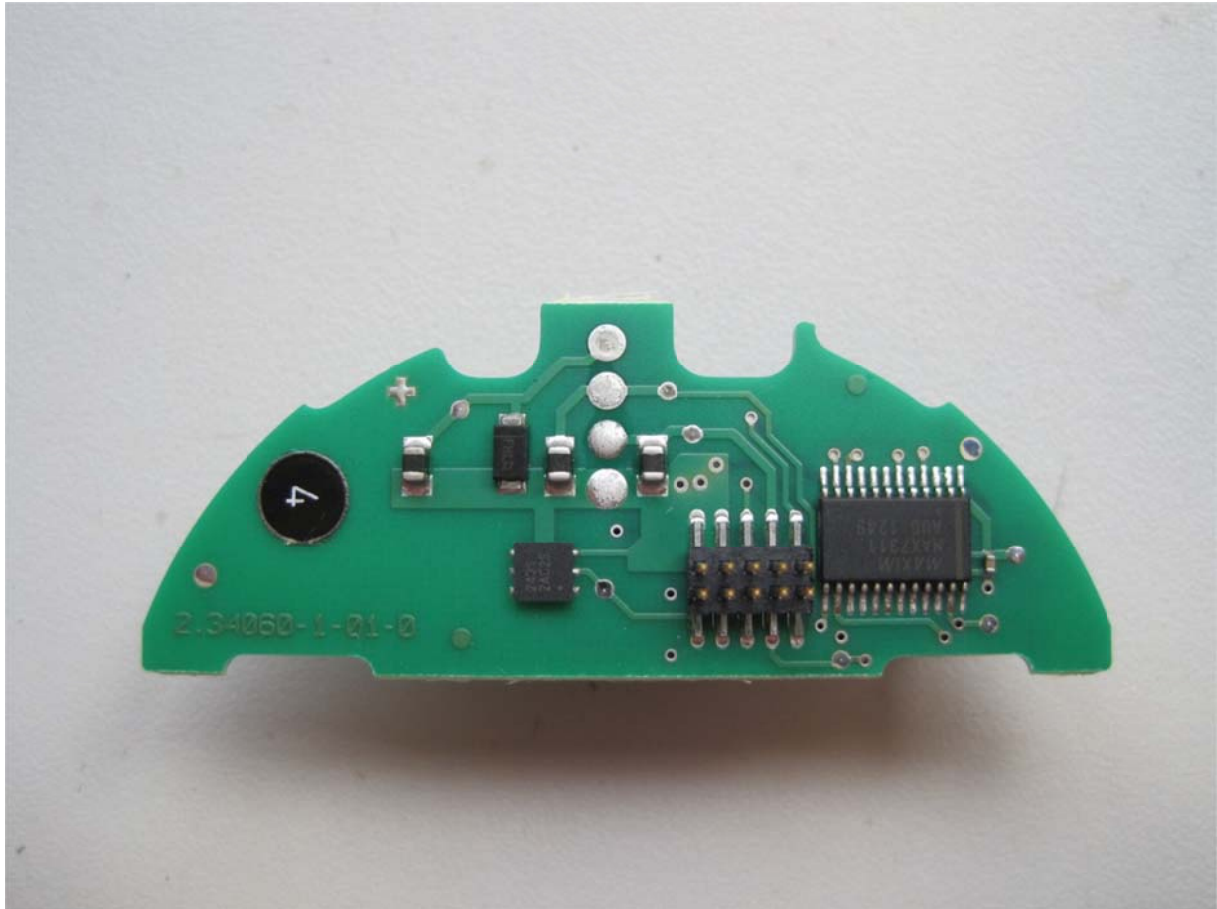
PCB, IO board LEVEL-BPH, HART, bottom view:



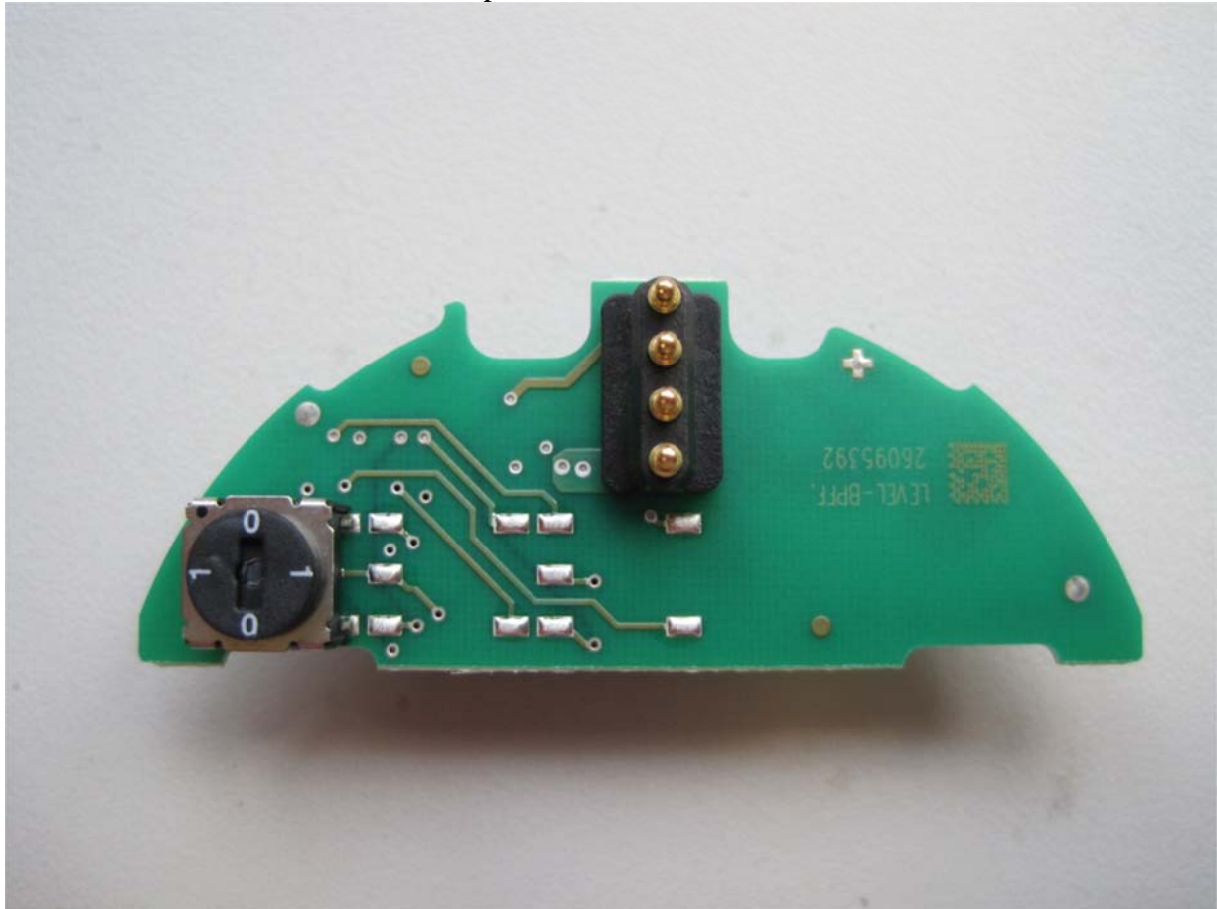
PCB, IO board LEVEL-BPPA, PA, top view:



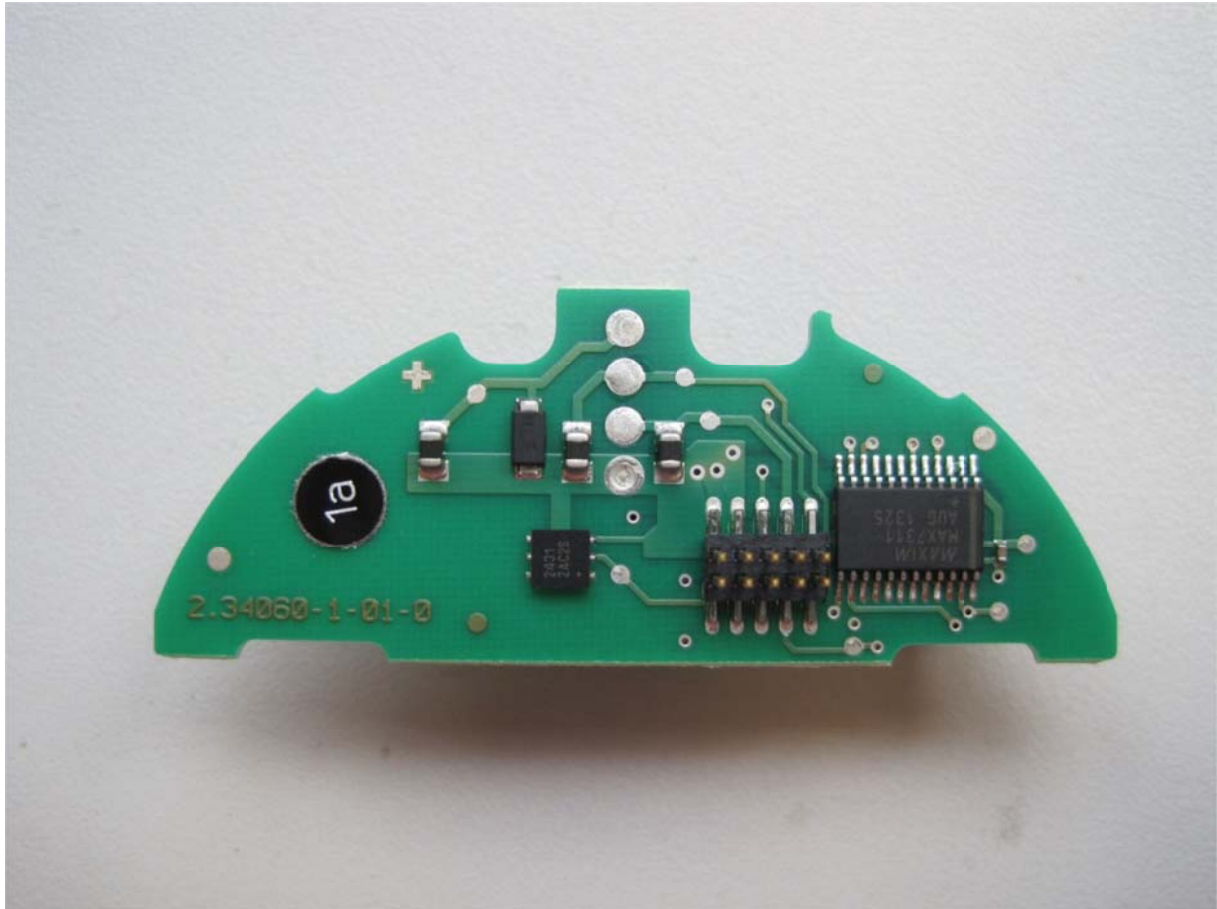
PCB, IO board LEVEL-BPPA, PA, bottom view:



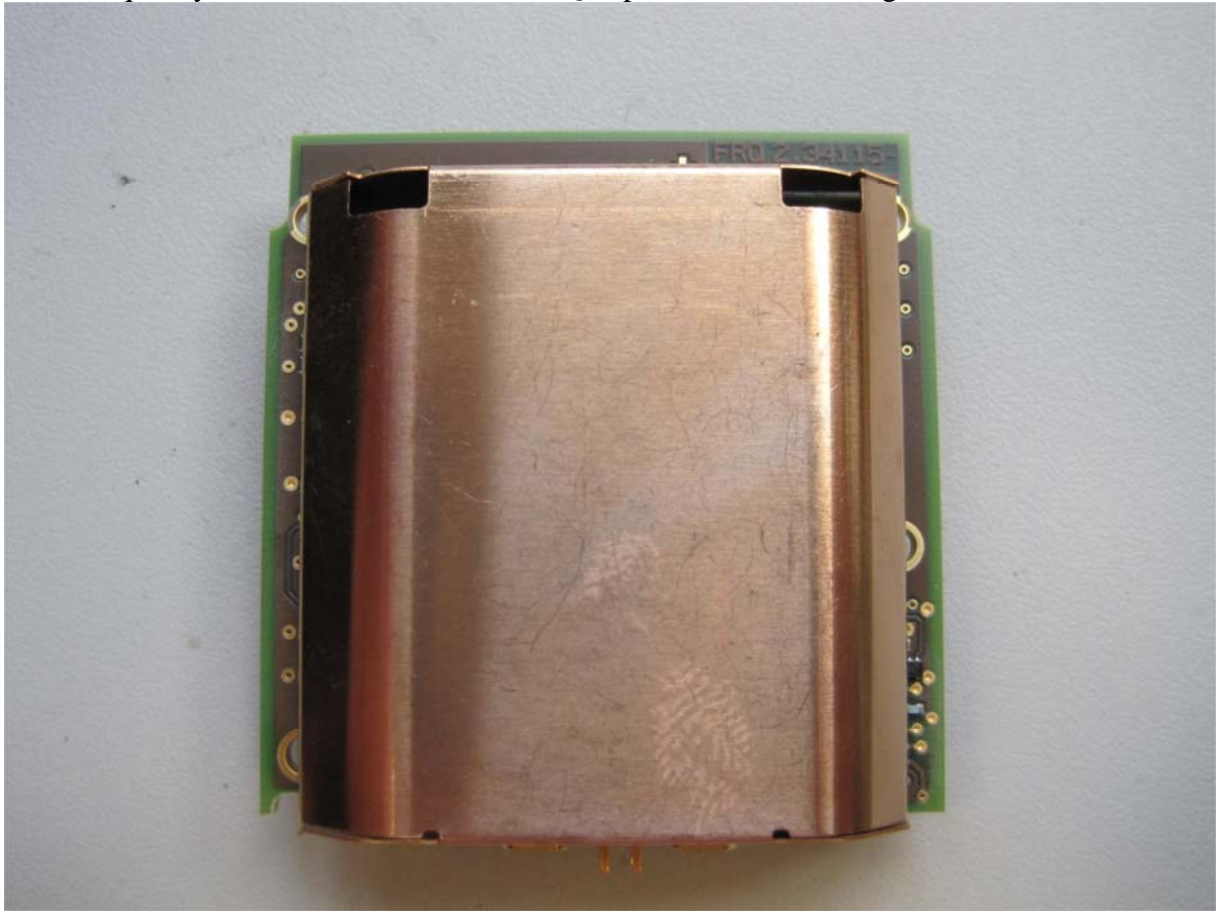
PCB, IO board LEVEL-BPFF, FF, top view:



PCB, IO board LEVEL-BPFF, FF, bottom view:



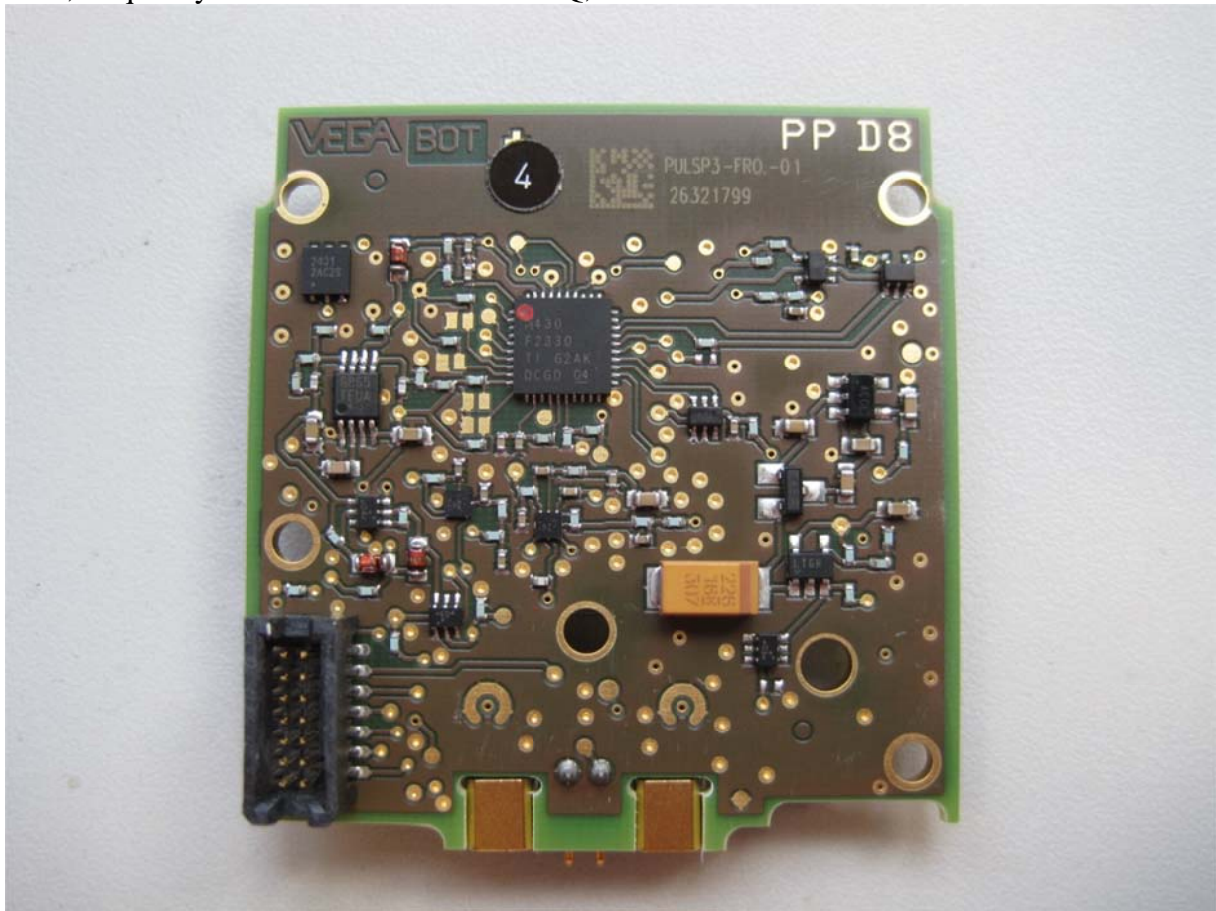
PCB, frequency control board PULSP3-FRQ, top view with shielding:



PCB, frequency control board PULSP3-FRQ, top view without shielding:



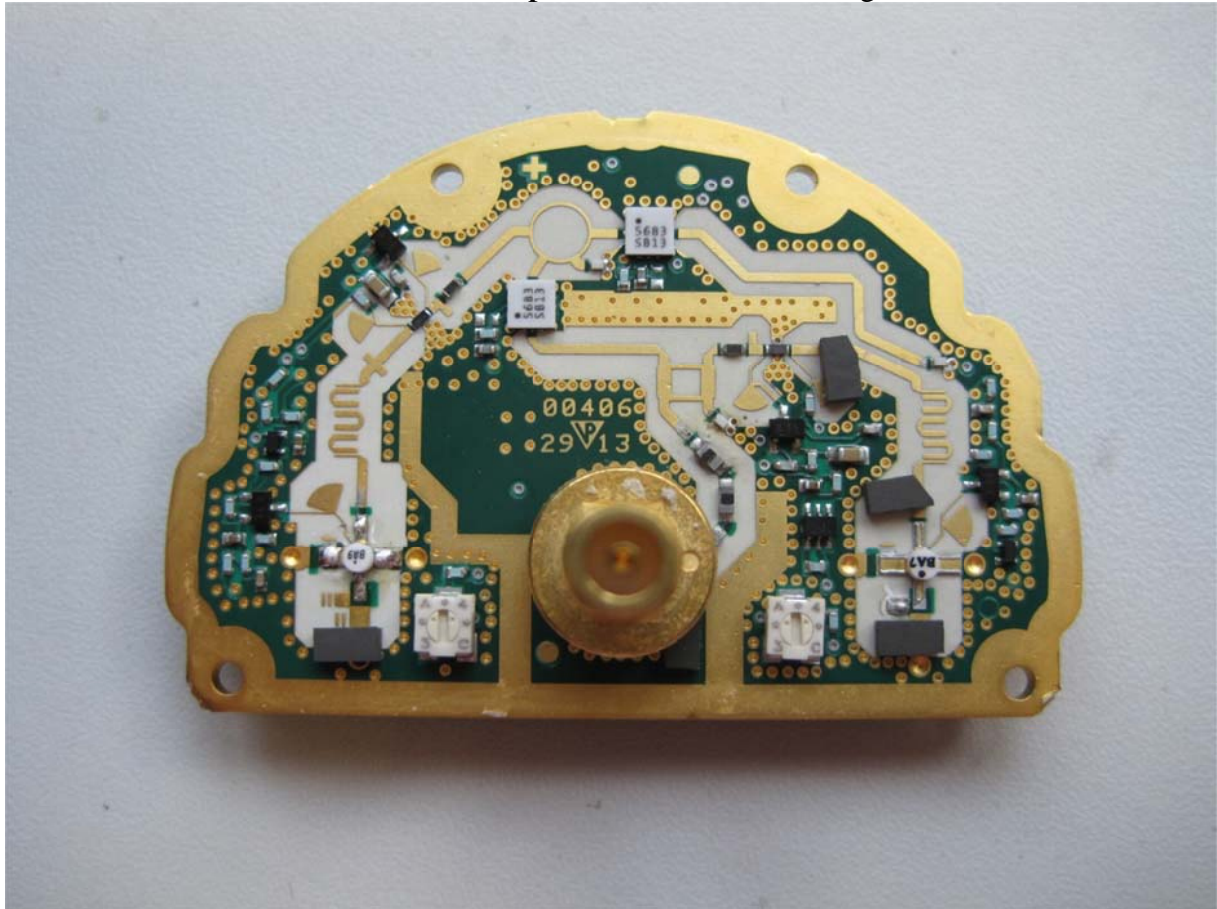
PCB, frequency control board PULSP3-FRQ, bottom view:



PCB, RF module PULSWL-HFK-SD, top view with RF housing:



PCB, RF module PULSWL-HFK-SD, top view without RF housing:



PCB, RF module PULSWL-HFK-SD, inside view of RF housing:



PCB, RF module PULSWL-HFK-SD, bottom view with shielding:



PCB, RF module PULSWL-HFK-SD, bottom view without shielding:

