

	Class II Permissive Change - <b>Photographs</b>		<b>VEGA</b>
May 17, 2017	VEGAPULS 69 FCC: O6QPS60XW1 IC: 3892A-PS60XW1	VEGAPULS 64 FCC: O6QPS60XW2 IC: 3892A-PS60XW2	

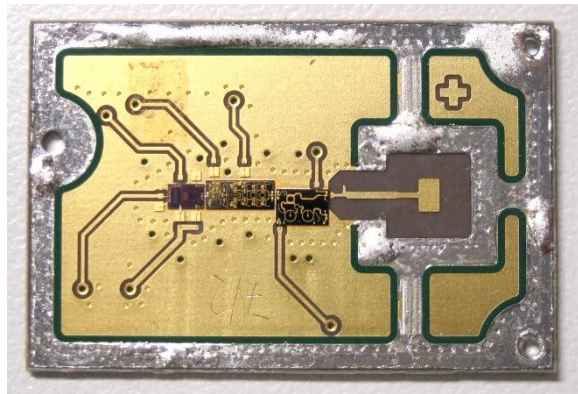
## 1. Printed Circuit Boards

### 1.1 PULSW-HF (original design)

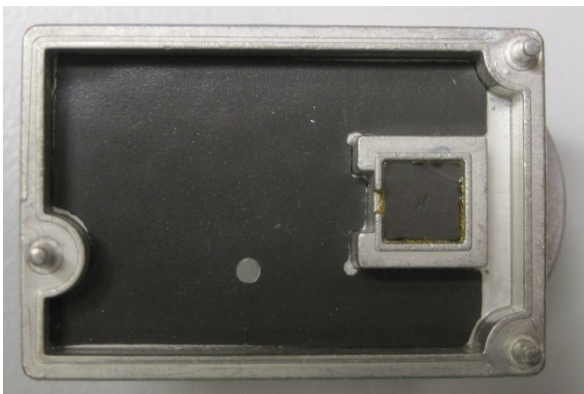
Note: The PULSW-HF front end board is identical for both devices VEGAPULS 69 and VEGAPULS 64.



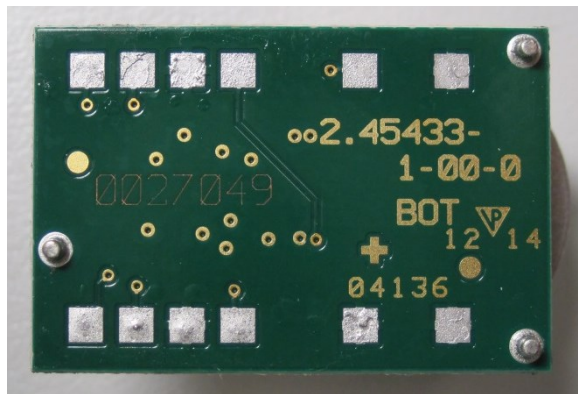
Top View with Cover



Top View



Cover Inside



Bottom View

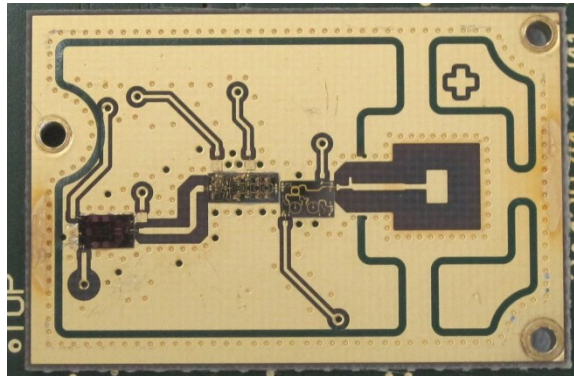
	Class II Permissive Change - <b>Photographs</b>		<b>VEGA</b>
May 17, 2017	VEGAPULS 69 FCC: O6QPS60XW1 IC: 3892A-PS60XW1	VEGAPULS 64 FCC: O6QPS60XW2 IC: 3892A-PS60XW2	

### 1.2 PULSW-HF (new design)

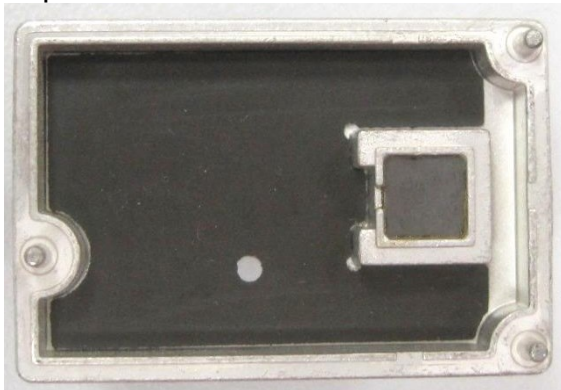
Note: The PULSW-HF front end board is identical for both devices VEGAPULS 69 and VEGAPULS 64.



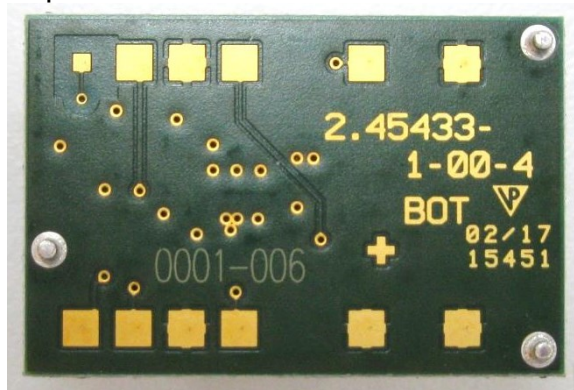
Top View with Cover



Top View



Cover Inside



Bottom View