

Rhein Tech Laboratories, Inc.
360 Herndon Parkway
Suite. 1400
Herndon, VA 20170
<http://www.rheintech.com>

Client: VEGA Grieshaber KG
Model: PS60S
IDs: O6QPS60XS2/3892A-PS60XS2
Standard: Part 15C/RSS-Gen
Project #: 2014077

Appendix M: Internal Photographs

Please refer to the following pages.

Docu N°
VEGAZW-6-22547
April 11, 2016

Internal Photographs



Model/HVIN: PS60S
FCC ID: O6QPS60XS2, IC: 3892A-PS60XS2

1. Electronics Units

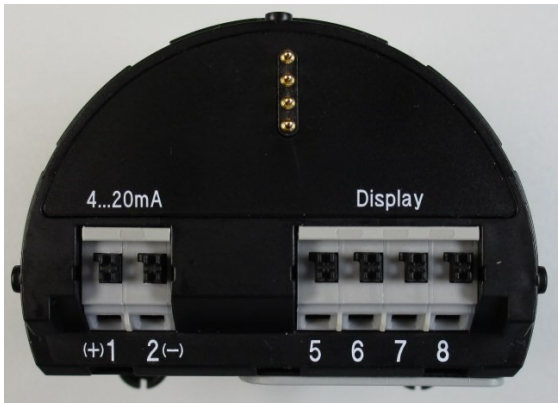
1.1 PS60HS



Front View



Back View



Top View



Bottom View

NOTE: Back view and bottom view are the same for all electronics units.

Docu N°
VEGAZW-6-22547
April 11, 2016

Internal Photographs

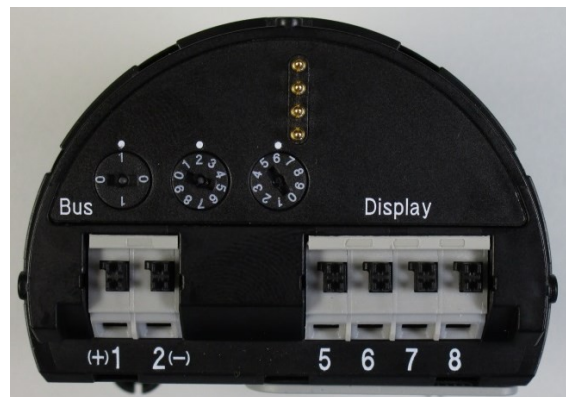
VEGA

Model/HVIN: PS60S
FCC ID: O6QPS60XS2, IC: 3892A-PS60XS2

1.2 PS60PAS



Front View



Top View

Docu N°
VEGAZW-6-22547
April 11, 2016

Internal Photographs

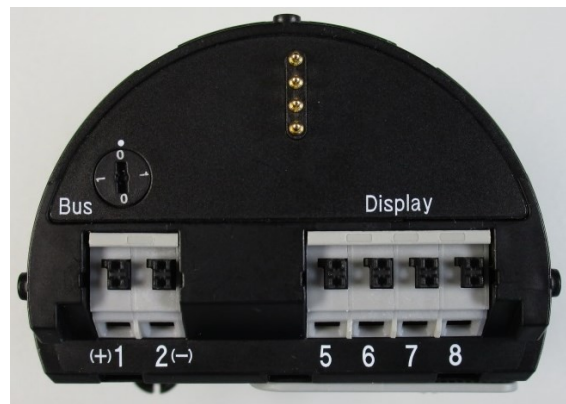
VEGA

Model/HVIN: PS60S
FCC ID: O6QPS60XS2, IC: 3892A-PS60XS2

1.3 PS60FFS



Front View



Top View

Docu N°
VEGAZW-6-22547
April 11, 2016

Internal Photographs

VEGA

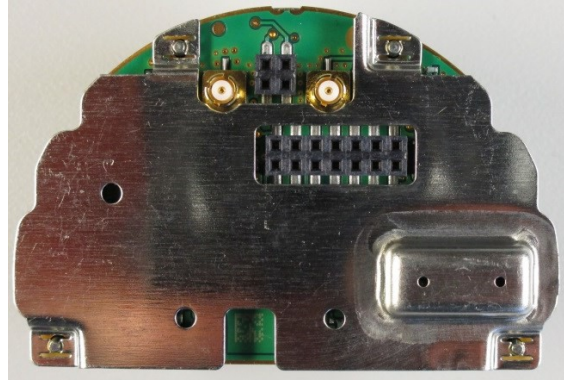
Model/HVIN: PS60S
FCC ID: O6QPS60XS2, IC: 3892A-PS60XS2

2. Printed Circuit Boards

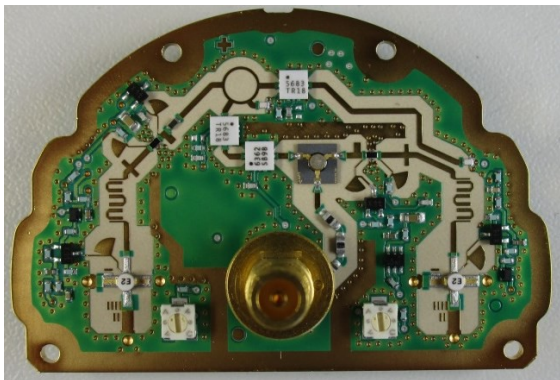
2.1 PULSP3-HFK-HD



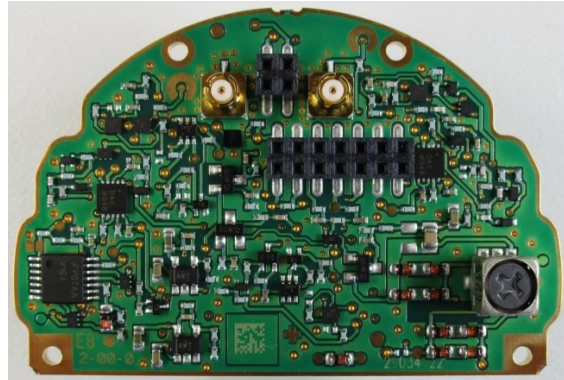
Top View with Cover



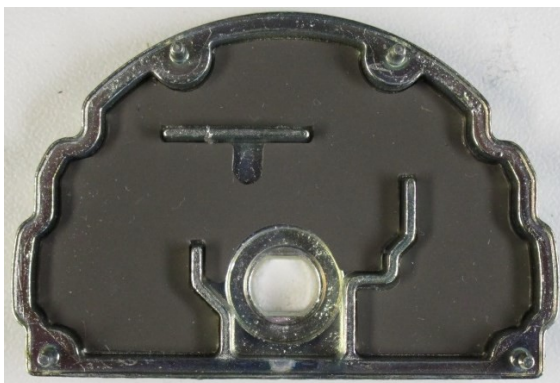
Bottom View with Shielding



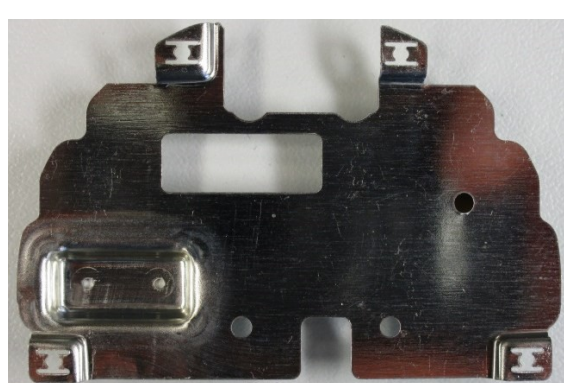
Top View



Bottom View

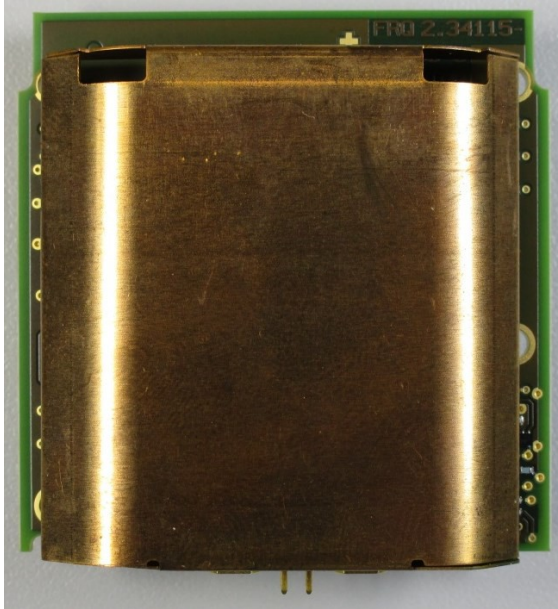


Cover Inside

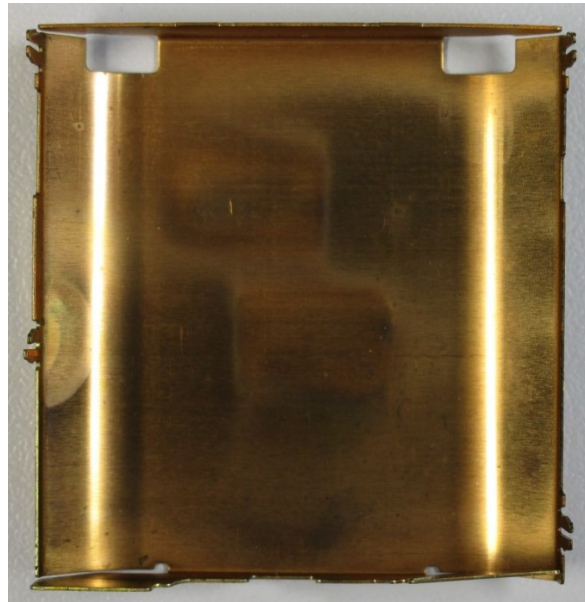


Shielding Inside

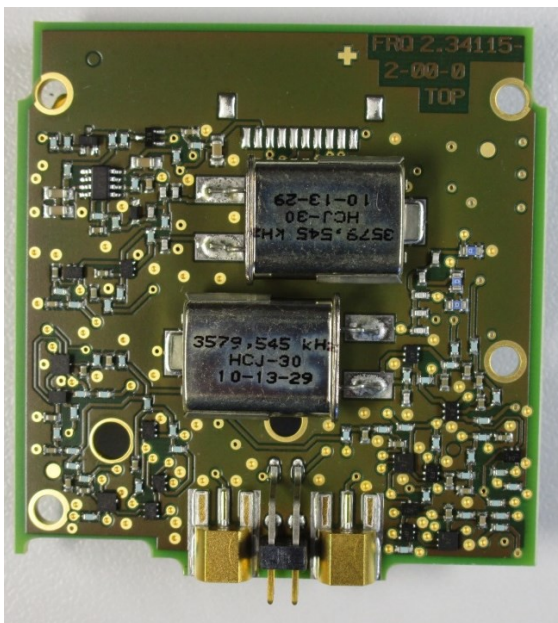
2.2 PULSP3-FRQ



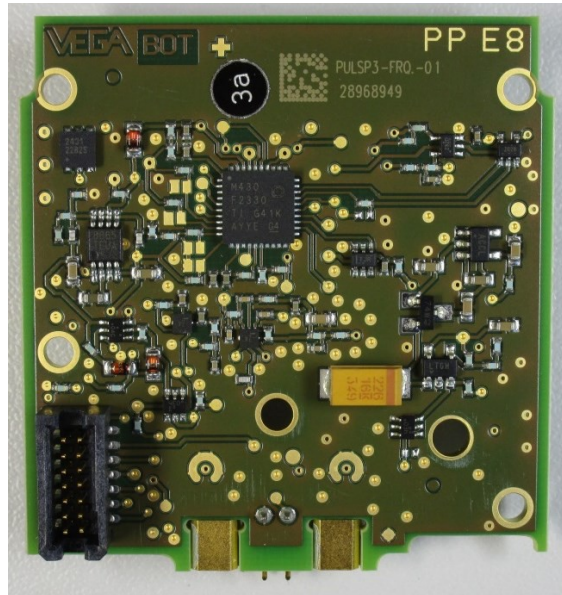
Top View with Shielding



Shielding Inside



Top View

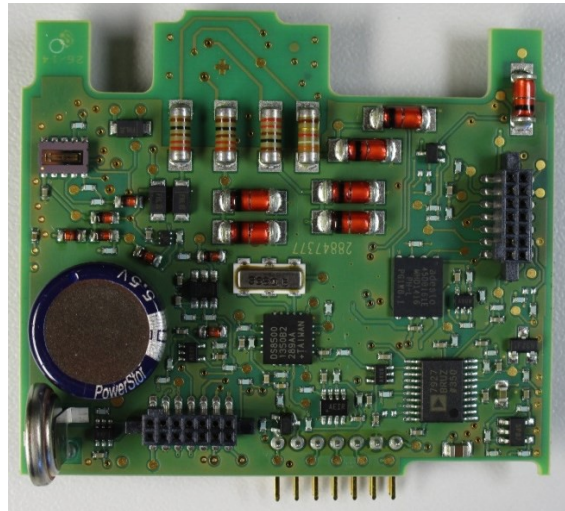


Bottom View

2.3 PULSP3-DH

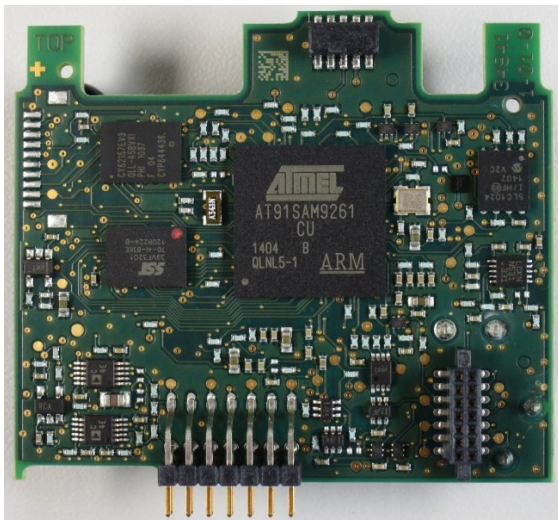


Top View

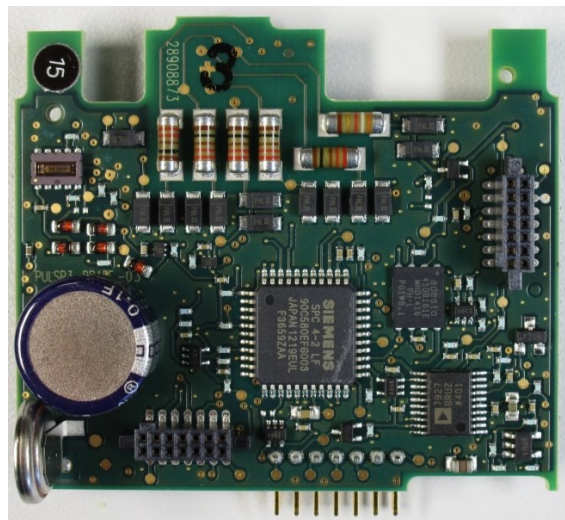


Bottom View

2.4 PULSP3-DPAFF

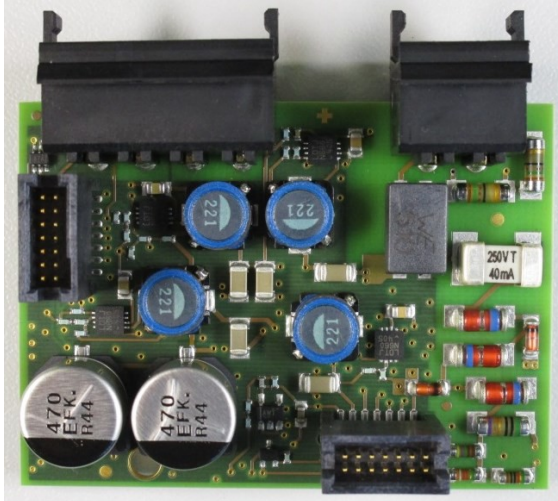


Top View

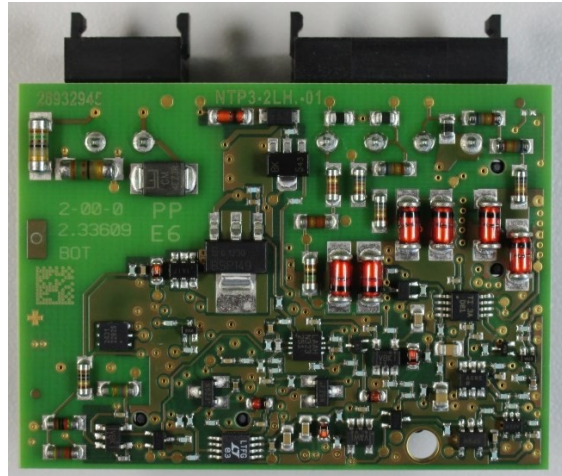


Bottom View

2.5 NTP3-2LH

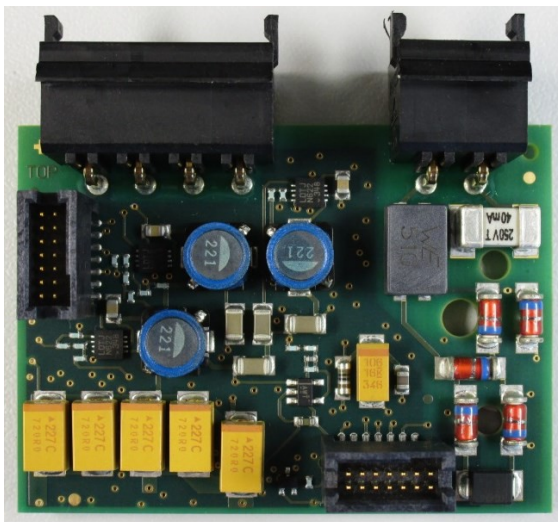


Top View

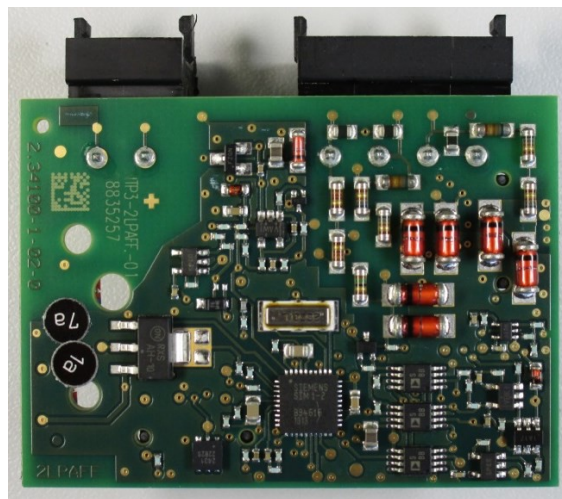


Bottom View

2.6 NTP3-2LPAFF

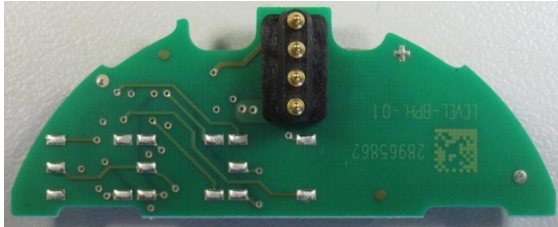


Top View

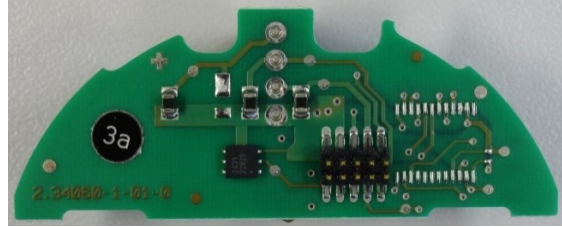


Bottom View

2.7 LEVEL-BPH

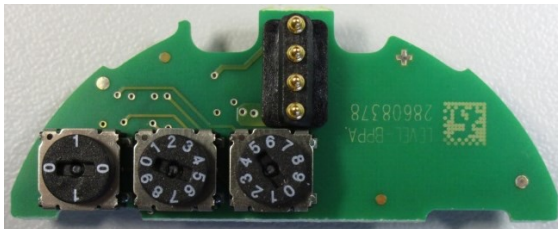


Top View

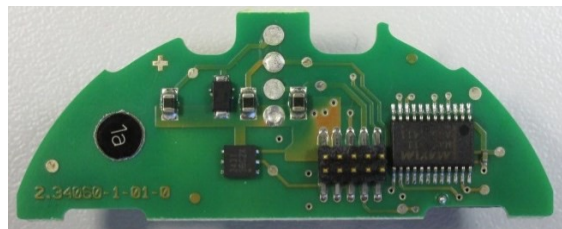


Bottom View

2.8 LEVEL-BPPA

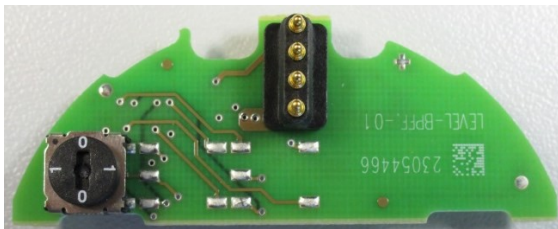


Top View

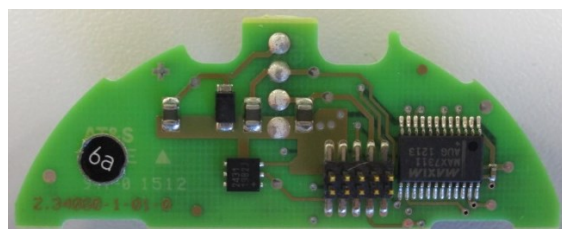


Bottom View

2.9 LEVEL-BPFF



Top View



Bottom View