



Engineering and Testing for EMC and Safety Compliance

Internal Photograph Report

VEGA Grieshaber KG

**MODELS: VEGAPULS 67
VEGAPULS 68**

FCC ID: O6QPS60XS1

Report No: 2009282-6768IP

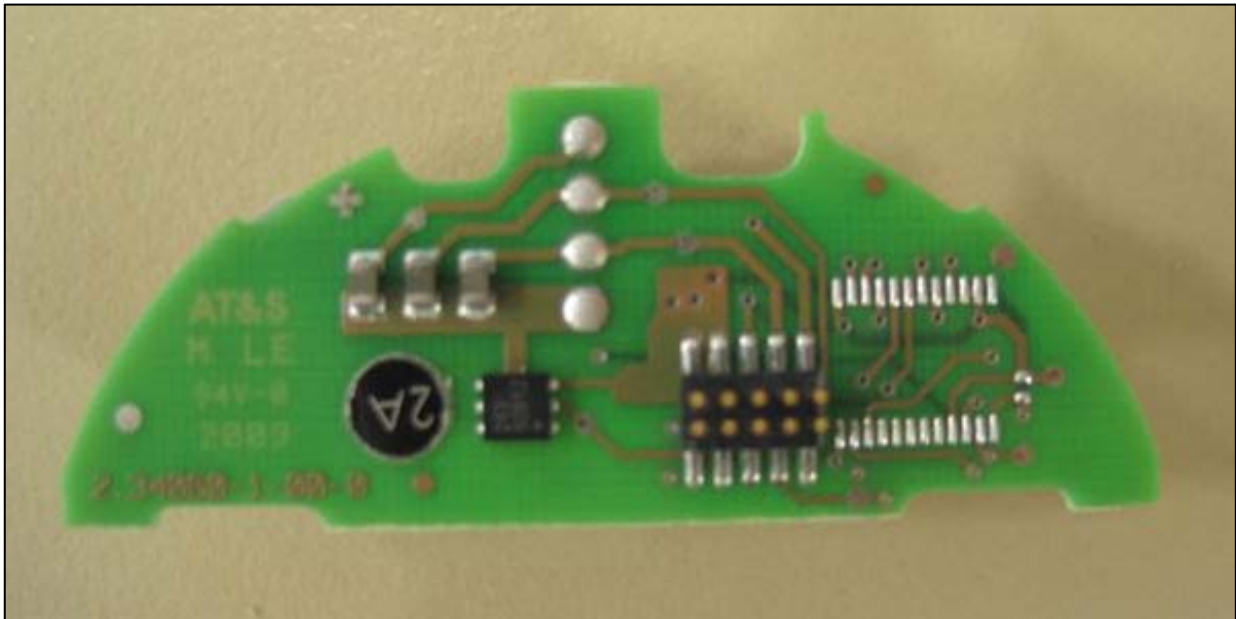
August 25, 2010

Table of Contents

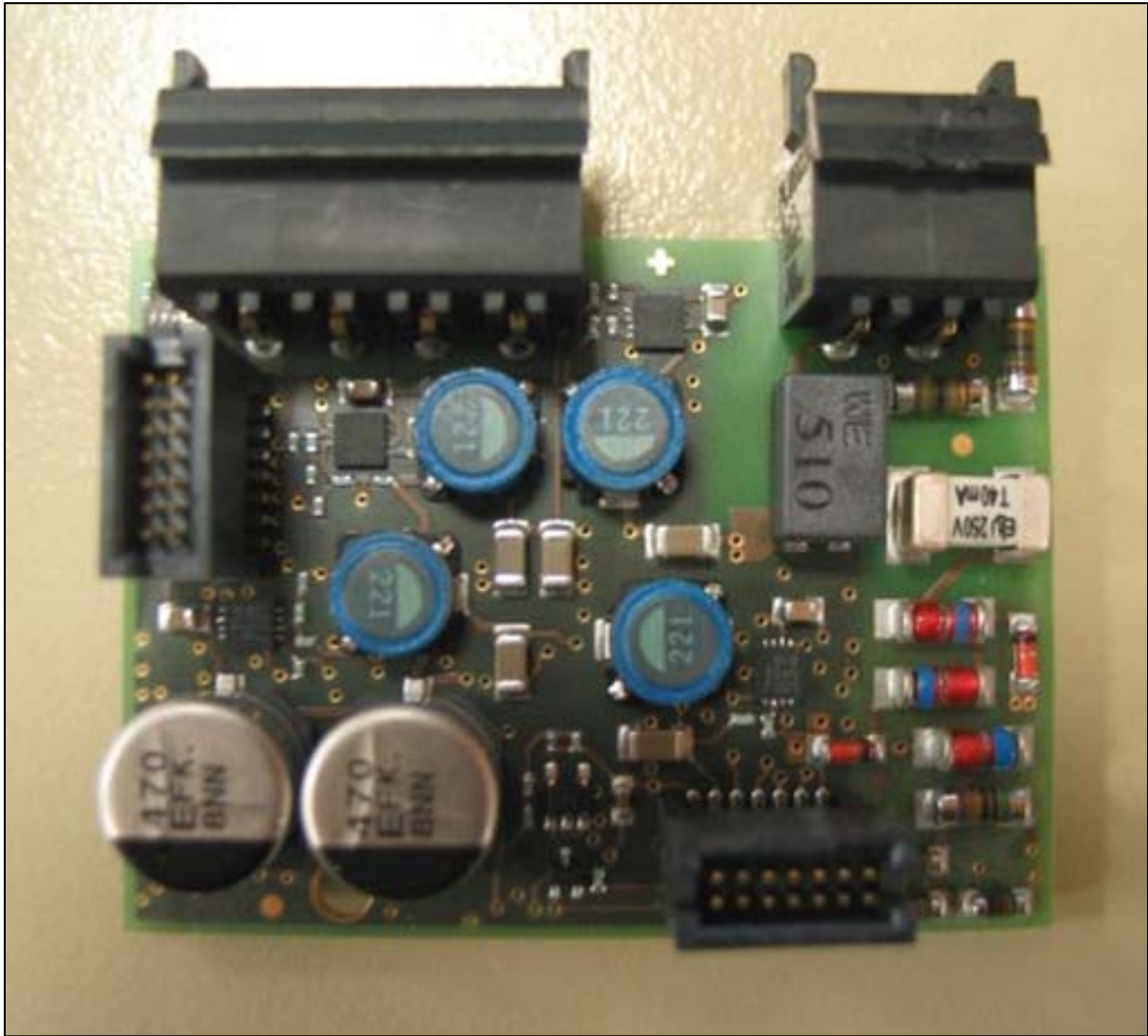
Photograph 1:	Adjustment Board (Component side)	2
Photograph 2:	Adjustment Board (Solder side).....	2
Photograph 3:	Power Supply Board (Component side)	3
Photograph 4:	Power Supply Board (Solder side)	4
Photograph 5:	CPU Board (Component side).....	5
Photograph 6:	CPU Board (Solder side)	6
Photograph 7:	Frequency Control Board (Component side with shield).....	6
Photograph 8:	Frequency Control Board (Solder side).....	7
Photograph 9:	Microwave Board (Component side)	8
Photograph 10:	Microwave Board (SOLDER side).....	8
Photograph 11:	Microwave Board (Component side with shield)	9
Photograph 12:	Microwave Shield Inside	10
Photograph 13:	Microwave Shield Outside	10
Photograph 14:	Electronics Cover (Component side).....	11
Photograph 15:	Electronics Cover (Solid side)	11
Photograph 16:	Electronic Kit View 1	12
Photograph 17:	Electronic Kit View 2.....	12



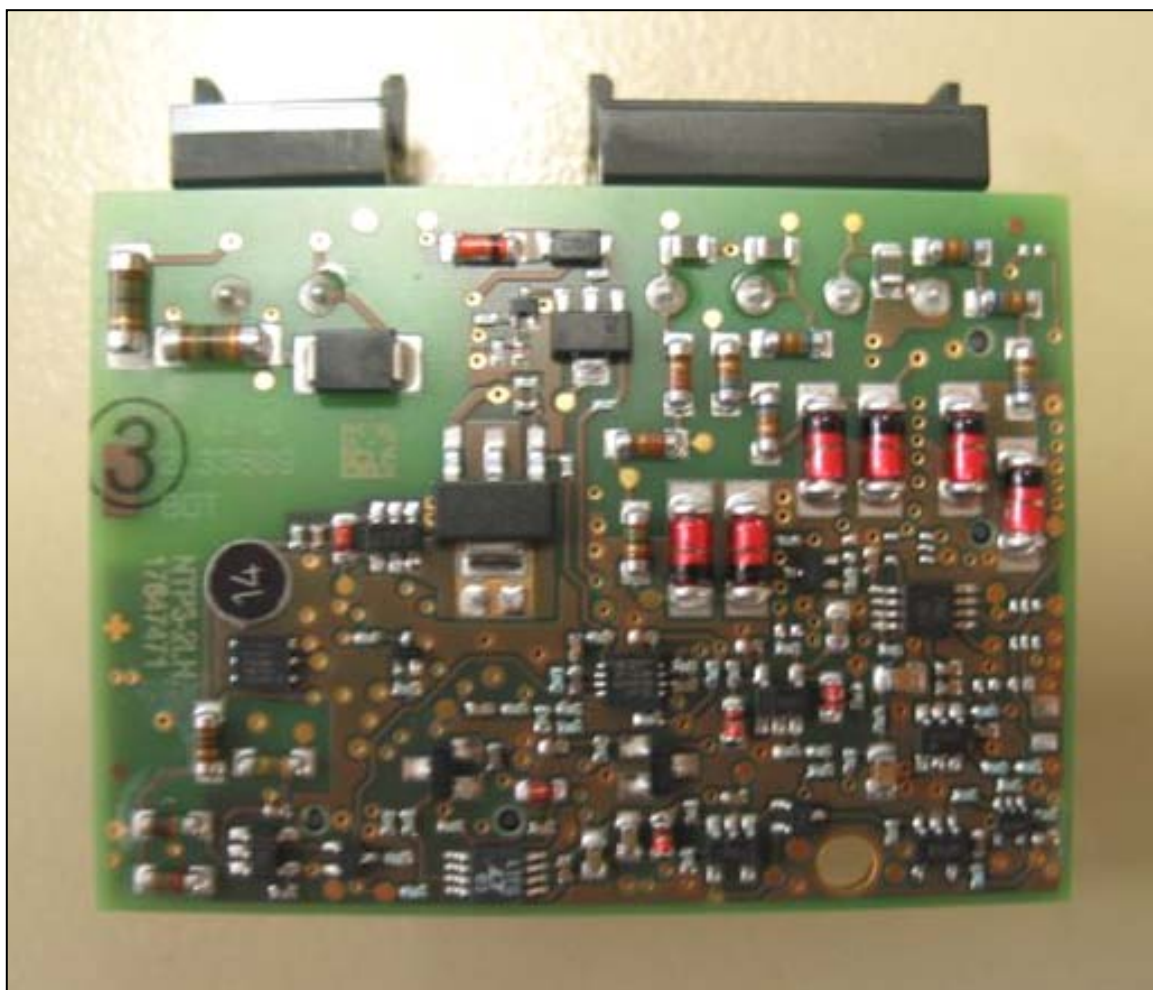
PHOTOGRAPH 1: ADJUSTMENT BOARD (COMPONENT SIDE)



PHOTOGRAPH 2: ADJUSTMENT BOARD (SOLDER SIDE)



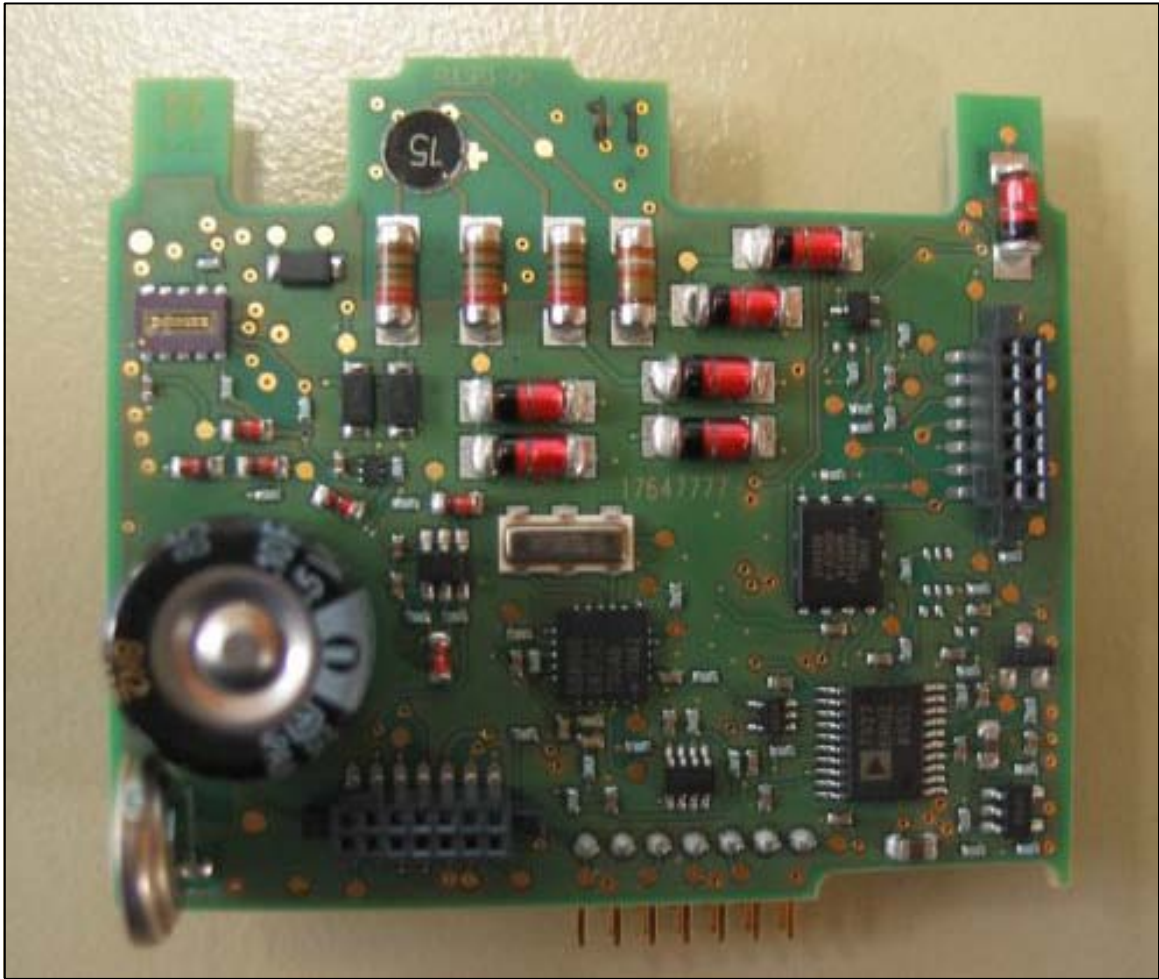
PHOTOGRAPH 3: POWER SUPPLY BOARD (COMPONENT SIDE)



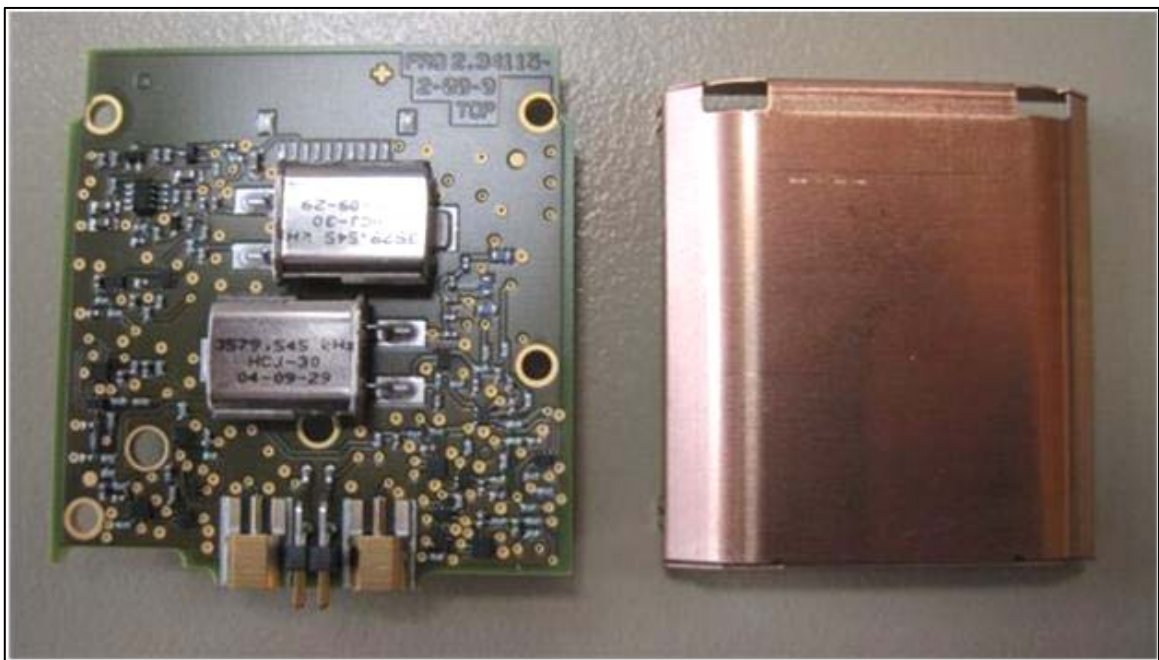
PHOTOGRAPH 4: POWER SUPPLY BOARD (SOLDER SIDE)



PHOTOGRAPH 5: CPU BOARD (COMPONENT SIDE)



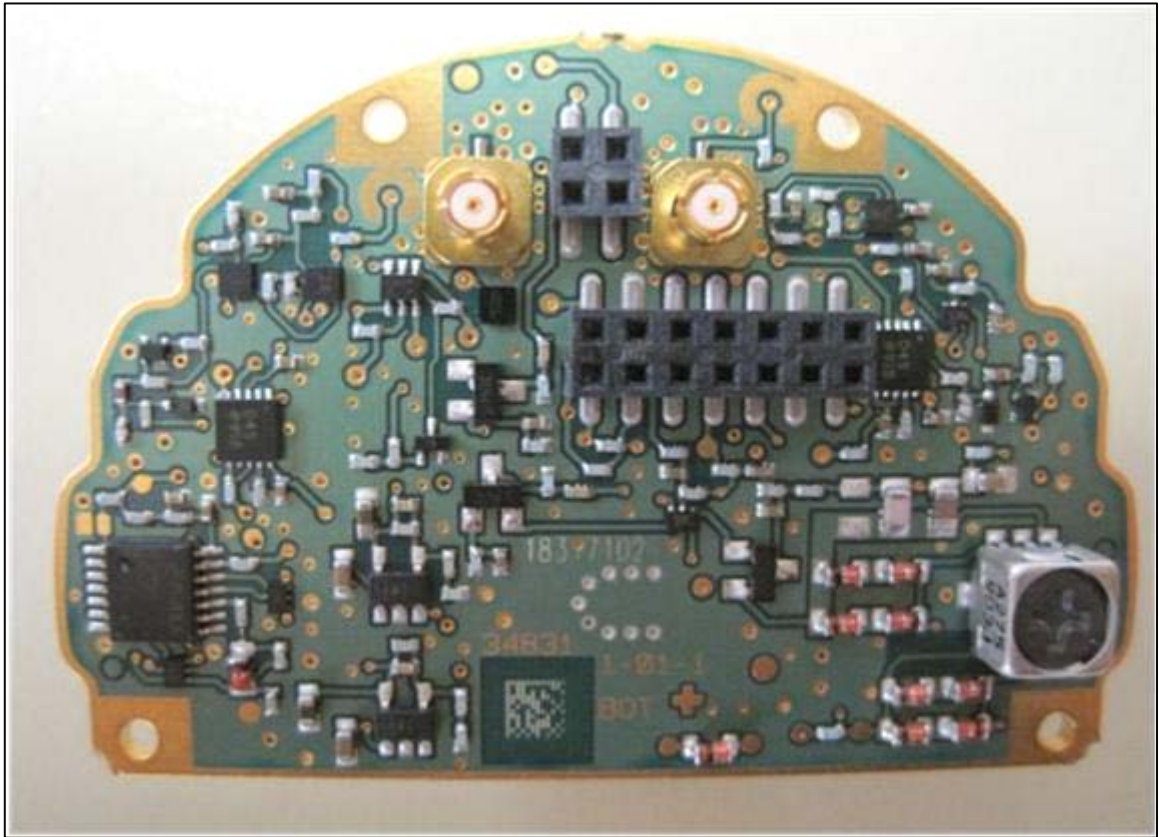
PHOTOGRAPH 6: CPU BOARD (SOLDER SIDE)



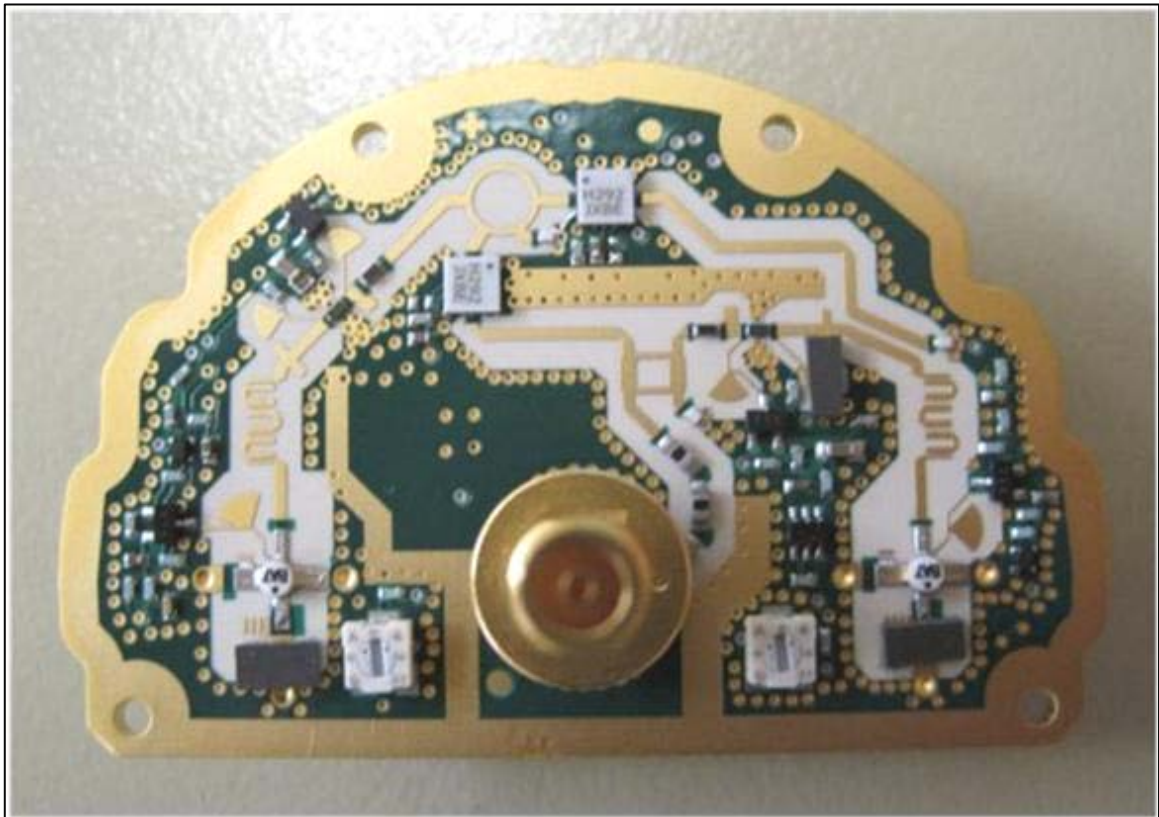
PHOTOGRAPH 7: FREQUENCY CONTROL BOARD (COMPONENT SIDE WITH SHIELD)



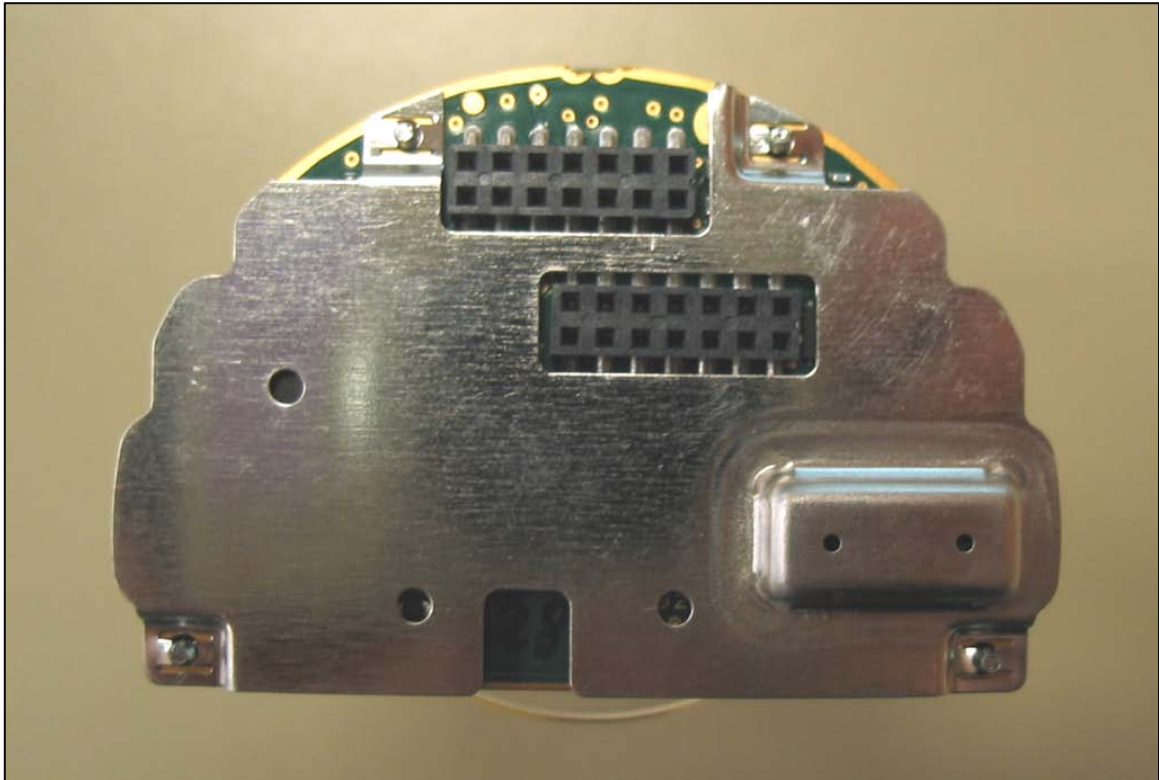
PHOTOGRAPH 8: FREQUENCY CONTROL BOARD (SOLDER SIDE)



PHOTOGRAPH 9: MICROWAVE BOARD (COMPONENT SIDE)



PHOTOGRAPH 10: MICROWAVE BOARD (SOLDER SIDE)



PHOTOGRAPH 11: MICROWAVE BOARD (COMPONENT SIDE WITH SHIELD)



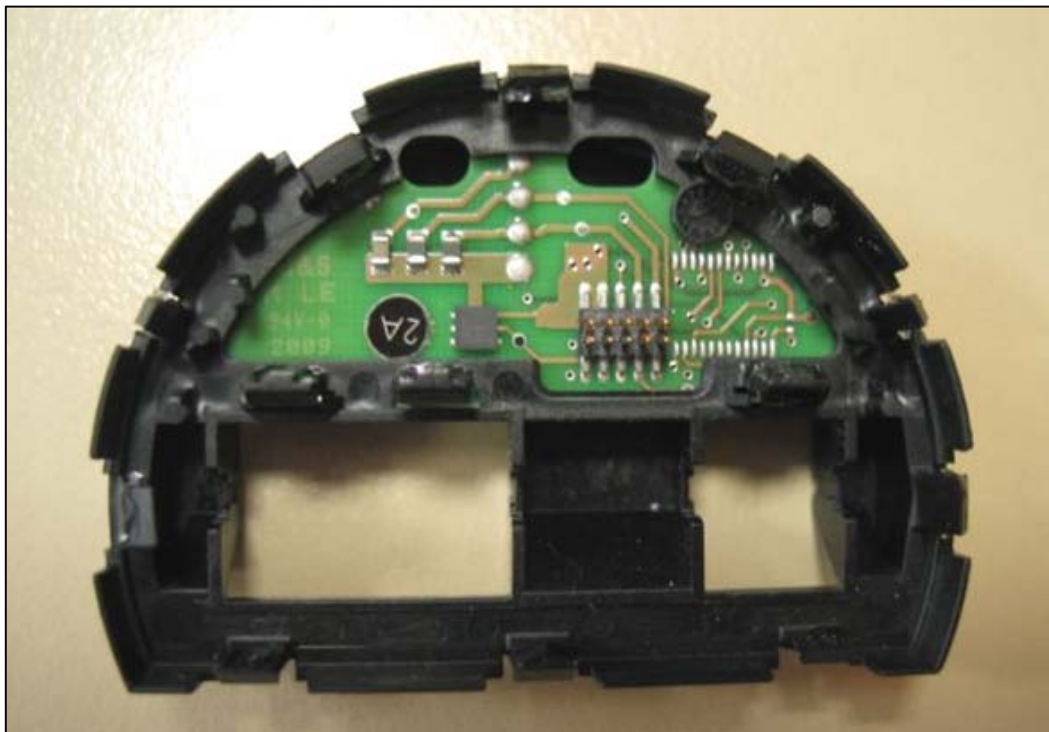
PHOTOGRAPH 12: MICROWAVE SHIELD INSIDE



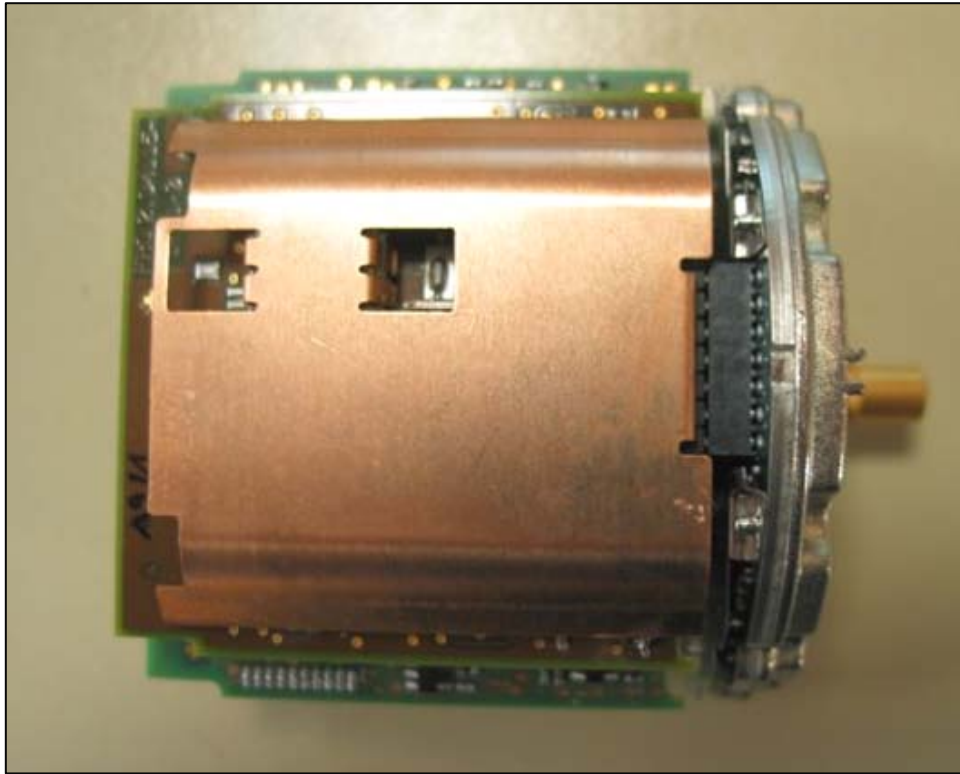
PHOTOGRAPH 13: MICROWAVE SHIELD OUTSIDE



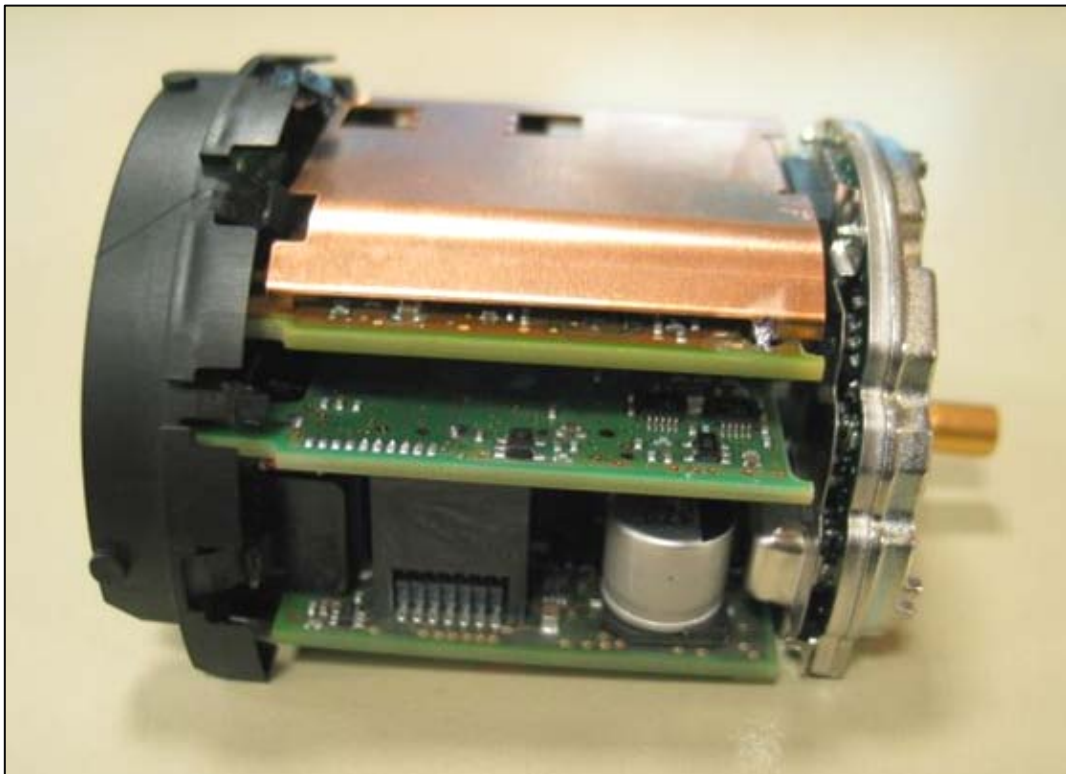
PHOTOGRAPH 14: ELECTRONICS COVER (COMPONENT SIDE)



PHOTOGRAPH 15: ELECTRONICS COVER (SOLID SIDE)



PHOTOGRAPH 16: ELECTRONIC KIT VIEW 1



PHOTOGRAPH 17: ELECTRONIC KIT VIEW 2