

Operating Instructions

Radar sensor for continuous level measurement in plastic vessels

VEGAPULS Air 23

Autarkic device with measured value transmission via radio technology



Document ID: 64314



VEGA

Contents

1	About this document	4
1.1	Function	4
1.2	Target group	4
1.3	Symbols used	4
2	For your safety	5
2.1	Authorised personnel	5
2.2	Appropriate use	5
2.3	Warning about incorrect use	5
2.4	General safety instructions	5
2.5	Lithium cells	6
2.6	Country of use	6
3	Product description	7
3.1	Configuration	7
3.2	Principle of operation	8
3.3	Adjustment	9
3.4	Packaging, transport and storage	9
4	Mounting	10
4.1	General instructions	10
4.2	Mounting instructions	10
4.3	Mounting preparations	11
4.4	Installation procedure	12
4.5	Transportation lock after mounting	13
5	Setup	14
6	Diagnostics and servicing	17
6.1	Maintenance	17
6.2	Rectify faults	17
6.3	How to proceed if a repair is necessary	18
7	Removal with glue connection	19
7.1	Dismounting instructions	19
7.2	Dismounting steps mounting ring	19
7.3	Disposal	20
8	Certificates and approvals	21
8.1	Radio licenses	21
8.2	EU conformity	21
8.3	Environment management system	21
9	Supplement	22
9.1	Technical data	22
9.2	Radio networks LTE-M and NB-IoT	25
9.3	Radio networks LoRaWAN - Data transmission	25
9.4	Dimensions	28
9.5	Industrial property rights	29
9.6	Licensing information for open source software	29
9.7	Trademark	29

**Safety instructions for Ex areas**

Take note of the Ex specific safety instructions for Ex applications. These instructions are attached as documents to each instrument with Ex approval and are part of the operating instructions.

Editing status: 2020-12-15

1 About this document

1.1 Function

This instruction provides all the information you need for mounting, connection and setup as well as important instructions for maintenance, fault rectification, the exchange of parts and the safety of the user. Please read this information before putting the instrument into operation and keep this manual accessible in the immediate vicinity of the device.

1.2 Target group

This operating instructions manual is directed to trained personnel. The contents of this manual must be made available to the qualified personnel and implemented.

1.3 Symbols used



Document ID

This symbol on the front page of this instruction refers to the Document ID. By entering the Document ID on www.vega.com you will reach the document download.



Information, note, tip: This symbol indicates helpful additional information and tips for successful work.



Note: This symbol indicates notes to prevent failures, malfunctions, damage to devices or plants.



Caution: Non-observance of the information marked with this symbol may result in personal injury.



Warning: Non-observance of the information marked with this symbol may result in serious or fatal personal injury.



Danger: Non-observance of the information marked with this symbol results in serious or fatal personal injury.



Ex applications

This symbol indicates special instructions for Ex applications.



List

The dot set in front indicates a list with no implied sequence.



Sequence of actions

Numbers set in front indicate successive steps in a procedure.



Battery disposal

This symbol indicates special information about the disposal of batteries and accumulators.

2 For your safety

2.1 Authorised personnel

All operations described in this documentation must be carried out only by trained, qualified personnel authorised by the plant operator.

During work on and with the device, the required personal protective equipment must always be worn.

2.2 Appropriate use

The VEGAPULS Air 23 is an autarkic sensor for continuous level measurement in plastic vessels.

You can find detailed information about the area of application in chapter " *Product description*".

Operational reliability is ensured only if the instrument is properly used according to the specifications in the operating instructions manual as well as possible supplementary instructions.

2.3 Warning about incorrect use

Inappropriate or incorrect use of this product can give rise to application-specific hazards, e.g. vessel overfill through incorrect mounting or adjustment. Damage to property and persons or environmental contamination can result. Also, the protective characteristics of the instrument can be impaired.

2.4 General safety instructions

This is a state-of-the-art instrument complying with all prevailing regulations and directives. The instrument must only be operated in a technically flawless and reliable condition. The operator is responsible for the trouble-free operation of the instrument. When measuring aggressive or corrosive media that can cause a dangerous situation if the instrument malfunctions, the operator has to implement suitable measures to make sure the instrument is functioning properly.

The safety instructions in this operating instructions manual, the national installation standards as well as the valid safety regulations and accident prevention rules must be observed by the user.

For safety and warranty reasons, any invasive work on the device beyond that described in the operating instructions manual may be carried out only by personnel authorised by the manufacturer. Arbitrary conversions or modifications are explicitly forbidden. For safety reasons, only the accessory specified by the manufacturer must be used.

To avoid any danger, the safety approval markings and safety tips on the device must also be observed.

The low transmitting power of the radar sensor as well as the integrated LTE-NB1, LTE-CAT-M1 or LoRa radio module is far below the internationally approved limits. No health impairments are to be expected with intended use. The band range of the transmission frequency can be found in chapter " *Technical data*".

2.5 Lithium cells

The power supply of the device is provided by integrated lithium cells in the housing. If the device is used as intended with the lid closed within the temperatures and pressures specified in the technical data, it is thus adequately protected.

**Note:**

Please observe the specific safety instructions in the scope of delivery of the device.

2.6 Country of use

Selection of the country of use defines country-specific settings for transmission into the mobile radio network or LoRaWan. It is imperative to set the country of use with the respective operating tool in the operating menu at the beginning of the setup (see chapter " *Menu Overview*", " *Main Menu*", " *Radio Transmission*").

**Caution:**

Operation of the device without selecting the country of use can lead to malfunctions and constitutes a violation of the radio licensing regulations of the respective country.

3 Product description

3.1 Configuration

Scope of delivery

The scope of delivery encompasses:

- Radar sensor
- Integrated identification card for LTE (eSIM) (optional)
- Magnet for activation
- Mounting ring with glued surface, cleaning cloth (version for glued connection)
- Tension belt (for version with flexible changeable holder)
- Documentation
 - Safety instructions for lithium metal battery
- Information sheet "*Documents and software*" with:
 - Instrument serial number
 - QR code with link for direct scanning
- Information sheet "*PINs and Codes*" with:
 - Identifier for LoRaWAN network (Device EUI, Application EUI, App Key)



Note:

Optional instrument features are also described in this operating instructions manual. The respective scope of delivery results from the order specification.

Scope of this operating instructions

This operating instructions manual applies to the following instrument versions:

- Hardware version from 1.0.0
- Software version from 1.0.0

Versions

The radar sensor VEGAPULS Air 23 is available with different mounting techniques:

- Adhesive joint (antenna side)
- Flexibly exchangeable holder
- Ceil mounting

Constituent parts

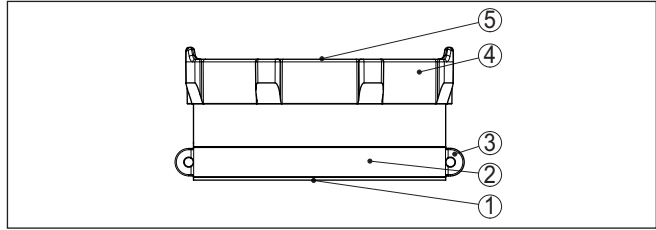


Fig. 1: Components of the VEGAPULS Air 23 sensor (example version for adhesive joint)

- 1 Radar antenna
- 2 Unscrewable mounting ring with glue surface
- 3 Eyelets for transport lock
- 4 Housing lid
- 5 Contact surface for activation by NFC or magnet

Type label

The type plate contains the most important data for identification and use of the device. This is located on the sensor housing.

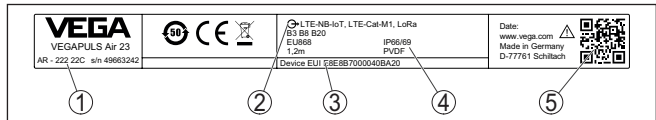


Fig. 2: Layout of the type label (example)

- 1 Order number
- 2 Wireless signal outputs, frequency bands
- 3 Device EUI LoRa
- 4 Technical data
- 5 QR code for device documentation

3.2 Principle of operation

Application area

VEGAPULS Air 23 is a radar sensor for continuous level measurement of plastic vessels, e.g. IBC containers. ¹⁾

The device is suitable for almost all liquids.

Depending on the version, it is mounted to the vessel or to the ceiling by means of:

- Glue surface on the bottom side of the sensor (vessel mounting)
- Tension belt (vessel mounting)
- Mounting brackets on the housing (ceiling mounting)

Functional principle

The instrument emits a continuous, frequency-modulated radar signal through its antenna. The emitted signal is reflected by the medium and received by the antenna as an echo with modified frequency. The frequency change is proportional to the distance and is converted into the level.

The measurement is made through the closed plastic ceiling of the vessel.

¹⁾ IBC = Intermediate Bulk Container

Measured value transmission Depending on the availability of the radio networks, the device transmits its measured values wirelessly to an LTE-M (LTE-CAT-M1) or NB-IoT (LTE-CAT-NB1) mobile radio or a plant-side LoRaWAN network. The transmission or evaluation is carried out via an Asset Management System, e.g. VEGA Inventory System.

Voltage supply The device is supplied with energy by non-exchangeable primary cells. The lithium cell used for this purpose is a compact storage device with high cell voltage and capacity for a long service life.

3.3 Adjustment

The device is activated contactlessly from outside:

- Via magnet
- By NFC technology via smartphone/tablet with VEGA Tools app

There are no additional adjustment options.

3.4 Packaging, transport and storage

Packaging Your instrument was protected by packaging during transport. Its capacity to handle normal loads during transport is assured by a test based on ISO 4180.

The packaging consists of environment-friendly, recyclable cardboard. For special versions, PE foam or PE foil is also used. Dispose of the packaging material via specialised recycling companies.

Transport Transport must be carried out in due consideration of the notes on the transport packaging. Nonobservance of these instructions can cause damage to the device.

Transport inspection The delivery must be checked for completeness and possible transit damage immediately at receipt. Ascertained transit damage or concealed defects must be appropriately dealt with.

Storage Up to the time of installation, the packages must be left closed and stored according to the orientation and storage markings on the outside. Unless otherwise indicated, the packages must be stored only under the following conditions:

- Not in the open
- Dry and dust free
- Not exposed to corrosive media
- Protected against solar radiation
- Avoiding mechanical shock and vibration
- Storage and transport temperature see chapter " *Supplement - Technical data - Ambient conditions*"
- Relative humidity 20 ... 85 %

Storage and transport temperature

4 Mounting

4.1 General instructions

Ambient conditions

The instrument is suitable for standard and extended ambient conditions acc. to DIN/EN/IEC/ANSI/ISA/UL/CSA 61010-1. It can be used indoors as well as outdoors.

Process conditions



Note:

For safety reasons, the instrument must only be operated within the permissible process conditions. You can find detailed information on the process conditions in chapter " *Technical data* " of the operating instructions or on the type label.

Hence make sure before mounting that all parts of the instrument exposed to the process are suitable for the existing process conditions.

Transport, alignment, position detection

The device measures the level only when aligned downwards.

To ensure this, the device has a GPS position sensor and an independent position sensor.



Note:

If the container is aligned horizontally (e.g. tilted during transport of a mobile container) no measurement is taken.

4.2 Mounting instructions

Container requirements

The containers can be commercially available combination IBC containers with a nominal volume of e.g. 1000 l. These typically consist of an inner container made of HDPE, a metal outer cage and a pallet.



Fig. 3: IBC container - Example

Installation position

The device can only be mounted on the top of an IBC container in one of the areas shown below:

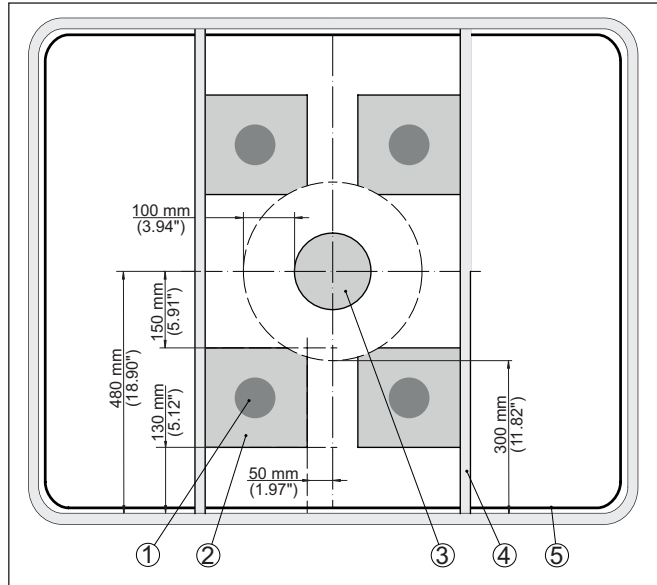


Fig. 4: Mounting position on the tank ceiling

- 1 Recommended mounting position
- 2 Permissible mounting range
- 3 Filling opening
- 4 Cross strut
- 5 Vessel edge

To avoid air bubbles in the area of the adhesive surface, the selected mounting position should be as flat as possible or slightly curved outwards.



Note:

Mounting positions or vessel ceilings with an inwardly curved surface are not suitable for fastening.

4.3 Mounting preparations

Preparation for mounting adhesive mounting

The intended mounting position must be dry and free of dust, oil and grease before mounting the sensor.



Note:

For this reason, clean the container ceiling in particular with the isopropanol-based cleaning cloth supplied. After cleaning the surface, first allow it to flash off well so that any residual solvent can evaporate.



Warning:

The 2-propanol contained in the cleaning cloth is highly flammable and harmful to health. Observe the hazard warnings on the packaging and the safety data sheet on our homepage.

**Caution:**

The cleaning cloth supplied must not be used for chemical residues on the surface. Ask the chemical manufacturer for cleaning options. It is not possible to mount the sensor on a surface that has not been cleaned.

4.4 Installation procedure**Glued connection**

The device version for adhesive bonding has a mounting ring with adhesive surface on the lower side of the housing.

Proceed as follows:

1. Completely remove the protective foil on the glue surface immediately before mounting
2. Position the sensor on the pre-cleaned area in one operation and press on firmly for approx. 30 s

The glue surface bonds adhesively to the surface of the IBC container and reaches its final adhesive strength after approx. 72 hours. A correction of the sensor position is no longer possible once the adhesive tape has been pressed.

**Note:**

The adhesive strength is considerably reduced after removal. If the sensor position is subsequently changed, a new adhesive tape must be applied. Please contact your contact person at VEGA.

**Danger:**

Re-applying the sensor with adhesive tape that is not as good as new means that there is a risk of uncontrolled loosening of the device. This can endanger, injure or damage people, animals and property (especially during transport).

Flexible exchangeable mounting

The device version with flexibly exchangeable holder is attached to the vessel via the tension belt.

To prevent the device from slipping out of its mounting position, it has a foam pad on the bottom side.

For mounting proceed as follows:

1. Loop the tension belt into the cross struts of the IBC container
2. Insert belt into guides on the housing cover, close click connection
3. Slide sensor into mounting position
4. Tighten belt, check sensor for secure fit

**Note:**

Ensure direct, permanent contact between the bottom of the sensor and the surface of the IBC container.

Ceil mounting

The device version for ceiling mounting has mounting brackets on the housing cover. The mounting is carried out using suitable screws and dowels provided by the customer.

Transportation lock**4.5 Transportation lock after mounting**

The adhesive joint and the flexible mounting of the device are only designed for stationary operation of the vessel.

**Danger:**

During transport the vessel is exposed to vibrations and shocks. This can cause the device to fall down with the risk of damage to property or persons. To avoid this, the device must be additionally secured using the integrated safety eyelets on the vessel, e.g. with a metal wire.

5 Setup

Activation

The following options are available for activating the device from the deactivated delivery status:

- By smartphone with VEGA Tools app via NFC
- Via magnet



Note:

The device is intended for permanent use. Deactivation is therefore only possible by service intervention in the power supply. Please take this into account before activation.

By smartphone

Proceed as follows for activation by NFC:

1. Start VEGA Tools app on smartphone
2. Activate NFC communication
3. Hold the adjustment tool close to the top of the device

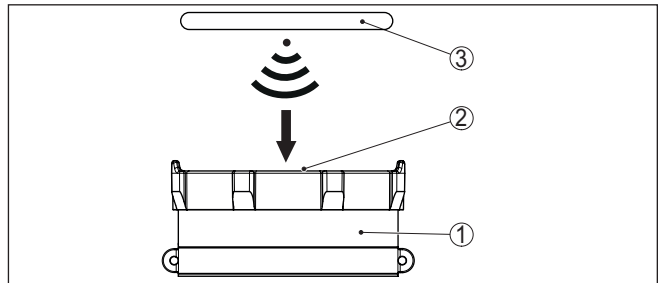


Fig. 5: Activate the sensor

- 1 Radar sensor
- 2 Contact surface for NFC communication
- 3 Adjustment tool, e.g. smartphone

The app confirms successful activation, setup is complete and the device goes into operation.

Via magnet

Proceed as follows for activation by magnet:

- Hold the magnet close to the upper side of the instrument next to the lettering " VEGA" and move it once around in a circle.

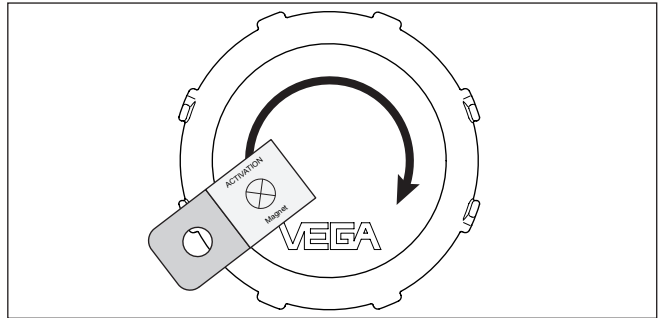


Fig. 6: Activate the sensor

- 1 Radar sensor
- 2 Contact surface for magnet
- 3 Magnet

Setup is now complete and the unit is ready for operation.

Measuring mode

After activation, a single measurement is carried out and the cyclic measuring interval is started. The sensor delivers the distance value from the lower side of the antenna to the medium surface. The conversion into level must be carried out in the cloud service

The device is pre-configured at the factory, no further configuration by the user is required. Details on the preset adjustment parameters can be found in chapter " *Technical data*".

Communication

To transmit the measured values to the cloud, the device requires access to mobile network or a LoRaWAN network at the installation site, depending on the version. If no corresponding network is available, a LoRaWAN gateway must be installed.



Note:

Ensure free access to the radio network. The device must not be covered by metal - especially at medium height - or even enclosed.



Note:

Simultaneous operation of LTE-M or LTE-IoT and LoRaWAN is not supported.

The following measured values are transmitted:

- Distance
- Electronics temperature
- Position determined by GNSS
- Position
- Remaining life of Lithium cell
- Device status

Single measurement

The VEGAPULS Air 23 offers the possibility to test the communication in the respective network. The current measured value is determined and transmitted once outside the cyclical transmission.

The procedure is done by reactivating NFC as described above. The sensor is simultaneously activated for the cyclical transmission of measured values. The transmission cycle of an already activated sensor is not changed by this.

Position determination

The position is determined by an integrated GNSS sensor via navigation satellites. It is optionally available for the LTE-M/NB-IoT version of the device.²⁾

With activated position determination, a GPS position determination is performed once during a NB-IoT cell change. If no position was found after 300 sec., the position determination will be interrupted and will only be carried out after a new NB-IoT cell change.

²⁾ No position determination in LoRa mode

6 Diagnostics and servicing

6.1 Maintenance

Maintenance

If the device is used properly, no special maintenance is required in normal operation.

Cleaning

The cleaning helps that the type label and markings on the instrument are visible.

Take note of the following:

- Only use cleaning agents that do not attack the housing, type plate, seals and the glue connection to the vessel
- Use only cleaning methods corresponding to the housing protection rating
- Keep a distance of at least 0.5 m when using high-pressure cleaners



Caution:

Mounting with tension belt is generally not suitable for high pressure cleaning. In case of insufficient fixation, the device may come loose from the holder depending on the pressure and distance. This can result in personal injury and damage to property. To avoid this, remove the unit from the vessel before cleaning.

6.2 Rectify faults

Reaction when malfunction occurs

The operator of the system is responsible for taking suitable measures to rectify faults.

Causes of malfunction

The device offers maximum reliability. Nevertheless, faults can occur during operation. These may be caused by the following, e.g.:

- Sensor
- Process
- Charge state of the lithium cell
- Availability/quality of radio transmission
- Signal processing

Reaction after fault rectification

Depending on the reason for the fault and the measures taken, the steps described in chapter " *Setup* " must be carried out again or must be checked for plausibility and completeness.

24 hour service hotline

Should these measures not be successful, please call in urgent cases the VEGA service hotline under the phone no. **+49 1805 858550**.

The hotline is also available outside normal working hours, seven days a week around the clock.

Since we offer this service worldwide, the support is provided in English. The service itself is free of charge, the only costs involved are the normal call charges.

6.3 How to proceed if a repair is necessary

You can find an instrument return form as well as detailed information about the procedure in the download area of our homepage. By doing this you help us carry out the repair quickly and without having to call back for needed information.

In case of repair, proceed as follows:

- Print and fill out one form per instrument
- Clean the instrument and pack it damage-proof
- Attach the completed form and, if need be, also a safety data sheet outside on the packaging
- Ask the agency serving you to get the address for the return shipment. You can find the agency on our homepage.

7 Removal with glue connection

7.1 Dismounting instructions

The device can be removed from the surface of an IBC container by unscrewing the sensor housing from the mounting ring. The mounting ring with its adhesive connection remains on the surface of the vessel and can be used for remounting the sensor.

If the mounting ring should be removed, follow the mounting steps in the next section.

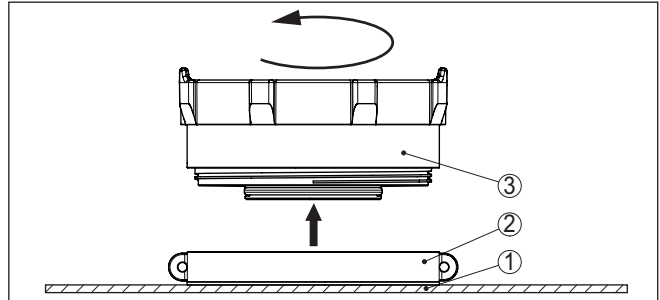


Fig. 7: Removal with glue connection

- 1 Vessel top
- 2 Mounting ring with glue surface
- 3 Sensor



Danger:

If the sensor shows obvious damage, there is a risk of ignition due to a possibly damaged battery. In this case, the device must not be packed or transported any further.

7.2 Dismounting steps mounting ring

Tool

The following tools are required to remove the mounting ring:

- Strap wrench
- if necessary a wooden scraper



Danger:

Depending on the medium in the IBC container, damage to the container may pose further risks for the user, the effects of which cannot be foreseen. Therefore, inform yourself about the contents of the IBC container before starting dismantling work and follow the instructions of the safety data sheet for the medium.



Caution:

The use of pointed or levering tools for dismantling may result in damage to the IBC container or equipment with the consequences shown above. Therefore, follow the procedure described below and use only tools recommended by VEGA.

Dismount

Proceed as follows while dismantling:

1. Place strap wrench around the mounting ring
2. Twist the mounting ring with the strap wrench, the adhesive bond is dissolved without any major force application.
3. Remove adhesive residues completely using a wooden scraper and dispose of in accordance with local regulations

7.3 Disposal

The device is made of recyclable materials. For this reason, it should be disposed of by a specialist recycling company. Observe the applicable national regulations.

Battery/accumulator recycling



Note:

The disposal is subject to the EU directive on batteries and accumulators.

Batteries and accumulators contain some environmentally harmful but also some valuable raw materials that can be recycled. For that reason batteries and accumulators must not be disposed of in household waste.

All users are legally obligated to bring spent batteries to a suitable collection point, e.g. public collection points. You can also return the batteries and accumulators to us for correct disposal. Due to the very strict transport regulations for lithium-based batteries/accumulators, this is normally not a good idea because shipment is very expensive.

If you have no way to dispose of the old instrument properly, please contact us concerning return and disposal.

8 Certificates and approvals

8.1 Radio licenses

Radar

The device has been tested and approved in accordance with the current edition of the applicable country-specific norms or standards.

Regulations for use can be found in the document "*Regulations for radar level measuring instruments with radio licenses*" on our homepage.

Mobile network

The radio modules in the device have been tested and approved according to the current edition of the applicable country-specific norms or standards.

The confirmations as well as regulations for use can be found in the document "*Radio licenses*" supplied or on our homepage.

LPWAN

The radio module in the device has been tested and approved according to the current edition of the applicable country-specific norms or standards.

The confirmations as well as regulations for use can be found in the document "*Radio licenses*" supplied or on our homepage.

8.2 EU conformity

The device fulfils the legal requirements of the applicable EU directives. By affixing the CE marking, we confirm the conformity of the instrument with these directives.

The EU conformity declaration can be found on our homepage.

8.3 Environment management system

Protection of the environment is one of our most important duties.

That is why we have introduced an environment management system with the goal of continuously improving company environmental protection. The environment management system is certified according to DIN EN ISO 14001. Please help us fulfil this obligation by observing the environmental instructions in chapters "*Packaging, transport and Lagestorerung*", "*Disposal*" of these operating instructions.

9 Supplement

9.1 Technical data

Note for approved instruments

The technical data in the respective safety instructions which are included in delivery are valid for approved instruments (e.g. with Ex approval). These data can differ from the data listed herein, for example regarding the process conditions or the voltage supply.

All approval documents can be downloaded from our homepage.

Materials and weights

Materials, non-wetted parts

- | | |
|--|----------|
| – Housing | PVDF |
| – Mounting ring | HDPE |
| – Foam material on mounting ring with flexibly exchangeable holder | EPDM |
| – Cover gasket | Silicone |

Weight, depending on the version

- | | |
|-------------------------------------|-----------------------------|
| – Glue connection, ceiling mounting | approx. 0.35 kg (0.772 lbs) |
| – Flexibly exchangeable holder | approx. 0.55 kg (1.212 lbs) |

Input variable

Measured variable	The measured variable is the distance between the antenna edge of the sensor and the medium surface. The antenna edge is also the reference plane for the measurement.
-------------------	--

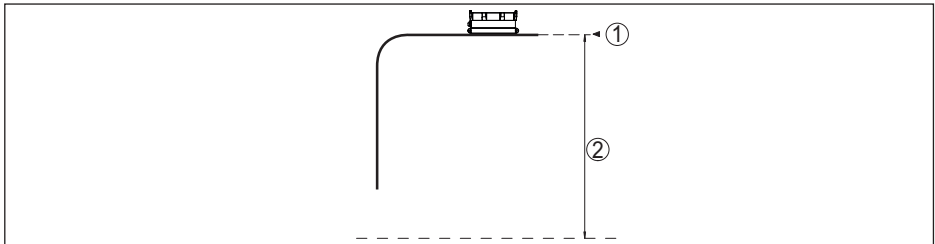


Fig. 8: Data of the input variable

- 1 Reference plane
- 2 Measured variable, max. measuring range

Max. measuring range	3 m (9.84 ft)
----------------------	---------------

Deviation (according to DIN EN 60770-1)

Process reference conditions according to DIN EN 61298-1

- | | |
|---------------------|---|
| – Temperature | +18 ... +30 °C (+64 ... +86 °F) |
| – Relative humidity | 45 ... 75 % |
| – Air pressure | 860 ... 1060 mbar/86 ... 106 kPa (12.5 ... 15.4 psig) |

Installation reference conditions

- Distance to installations > 200 mm (7.874 in)
- Reflector Flat plate reflector
- False reflections Biggest false signal, 20 dB smaller than the useful signal

Deviation See following graphic:

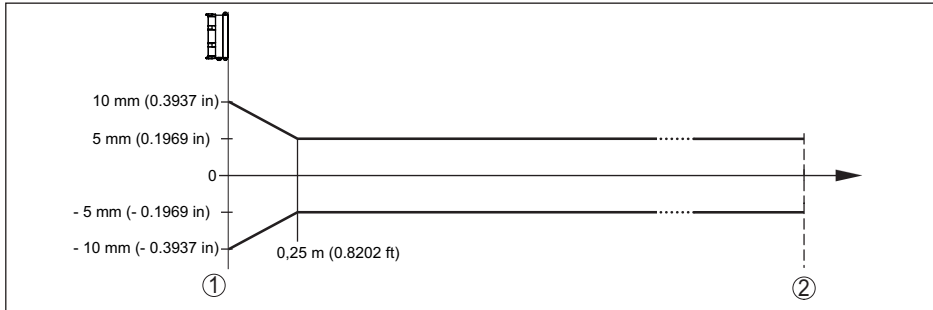


Fig. 9: Deviation under reference conditions

- 1 Reference plane
- 2 Recommended measuring range

Characteristics and performance data

Measuring frequency	W-band (80 GHz technology)
Measuring cycle time	≤ 5 s
Interval	1 ... 24 measurements per day ³⁾
Beam angle ⁴⁾	8°
Emitted HF power (depending on the parameter setting) ⁵⁾	
- Average spectral transmission power density	-86.2 dBm/MHz EIRP
- Max. spectral transmission power density	< 34 dBm/50 MHz EIRP
- Max. power density at a distance of 1 m	< 0.3 μW/cm ²
Alignment for measurement	vertical 90°, ± 10°

Switch-on phase

Start-up time to the first valid measured value < 10 s

³⁾ Configurable when ordering
⁴⁾ Outside the specified beam angle, the energy level of the radar signal is 50% (-3 dB) less.
⁵⁾ EIRP: Equivalent Isotropic Radiated Power

Wireless data transmissionFrequency bands ⁶⁾

- NB-IoT (LTE-Cat-NB1)	B1, B2, B3, B4, B5, B6, B8, B12, B13, B17, B19, B20, B25, B26, B28, B66
- LTE-M (LTE-CAT-M1)	B1, B2, B3, B4, B5, B6, B8, B12, B13, B14, B17, B18, B19, B20, B25, B26, B28, B66
- LoRaWAN	EUR868, US915, AS923

Ambient conditions

Ambient temperature	-20 ... +60 °C (-4 ... +140 °F)
Storage and transport temperature	-20 ... +80 °C (-4 ... +176 °F)

Mechanical environmental conditions

Sinusoidal vibrations	Class 5M2 acc. to IEC 60271-3-5
Impacts	10 g, 11 ms; 30 g, 6 ms acc. to IEC 60271-3-5 (mechanical shock)
Impact resistance	IK07 acc. to IEC 62262 ⁷⁾

Process conditions

Process temperature	-20 ... +60 °C (-4 ... +140 °F)
---------------------	---------------------------------

Integrated clock

Date format	Day.Month.Year
Time format	12 h/24 h
Time zone, factory setting	CET
Max. rate deviation	10.5 min/year

Integrated primary cell

Cell type	LS 17500, Lithium metal (Li/SOCL ₂), not rechargeable
Number of single cells	2
Cell voltage, each	3.6 V
Cell capacitance, each	3.6 Ah
Energy content, each	12.96 Wh
Lithium content, each	approx. 0.9 g
Weight, per typ.	23 g
Self-discharge	< 1 % after 1 year at 20 °C
Running time ⁸⁾	

Interval	LoRaWAN	NB-IoT/LTE-M
1 h	> 9 years	> 3 years

⁶⁾ Delivery country-specific according to order configuration

⁷⁾ Testing with hemisphere 50 mm, 500 g, ±25 g

⁸⁾ Specifications apply to this cell type at approx. +25 °C (+77 °F) ambient temperature and strong reception signal (mobile radio/LoRa). Actual running time may vary greatly depending on the network provider, temperature or humidity. Small measuring intervals generally shorten the running time.

Interval	LoRaWAN	NB-IoT/LTE-M
4 h	> 10 years	> 6 years
6 h		> 8 years
12 h		> 10 years
24 h		

Additional output parameter - Electronics temperature

Range	-20 ... +60 °C (-4 ... +140 °F)
Resolution	< 0.1 K
Deviation	±3 K

Electrical protective measures

Protection rating	IP69 acc. to IEC 60529, Type 6X acc. to NEMA ⁹⁾
Altitude above sea level	2000 m (6562 ft)
Protection class	None (autarcic operation)
Pollution degree	4

9.2 Radio networks LTE-M and NB-IoT

LTE-M and NB-IoT

LTE-M (Long Term Evolution for Machines) and NB-IoT (Narrow Band Internet of Things) are extensions of the LTE mobile radio standard to IoT applications. Both enable the wireless connection of mobile, physical objects to the Internet via the mobile network.

You can find more information about the respective mobile phone provider.

9.3 Radio networks LoRaWAN - Data transmission

LoRaWAN

LoRaWAN (Long Range Wide Area Network) is a network protocol for wireless signal transmission to a corresponding gateway. LoRaWan enables a range of several kilometres outdoors and good building penetration with low power consumption of the transmission module.

In the following, the necessary device-specific details are shown. You can find further information of LoRaWAN on www.lora-alliance.org.

Data stream, byte order, packet structure

The data are transferred as a byte stream in packets. Each packet is given an identifier at the beginning which defines the meaning of the following bytes.

The byte order corresponds to the Cayenne Low Power Payload (LPP) Guideline as BigEndian.

Packet 2 is transferred as standard. Alternative packets are required if additional characteristic values (error status, position) occur in the sensor. The maximum packet size is 52 bytes in Europe and 11 bytes in the USA with maximum splay factor.

A LoRa standard function additionally transmits a packet counter and the serial number of the LoRa

⁹⁾ Specifications apply to housings. With IP69 K for adhesive bonding in addition to the adhesive tape 2-component adhesive, e.g. 3M type 8005, is additionally required

module with every packet.

Packet structure

Packet							Note
2	3	4	5	6 (USA)	7 (USA)	254	
Number of bytes							Note
1	1	1	1	1	1	1	
1	1	1	1	1	1		Namur status of the device
4	4	4	4				Measured value as floating point number
1	1	1	1				Unit, measured value
1	1	1	1				Remaining battery capacity in %
2	2	2	2				Temperature in °C, resolution ±0,1 K
	8		8	8			Location (GNSS)
		4	4		4		VEGA Device status
1	1	1	1				Angle of inclination to the perpendicular
11	19	15	23	10	6	1	Total

Packet assignment sensor status

Sensor status	Packet						
	2	3	4	5	6 (USA)	7 (USA)	254
Sensor function error-free	X						
Sensor function error-free plus GPS information		X					
Sensor function error-free plus GPS information (USA)	X				X		
Fault			X				
Error case plus GPS				X			
Fault (USA)	X					X	
Error case plus GPS (USA)	X				X	X	
Sensor in horizontal position			X				
Sensor in horizontal position plus GPS				X			
Sensor in horizontal position (USA)	X					X	
Sensor in horizontal position plus GPS (USA)	X				X	X	
Dummy required							X

Example data transmission

Packet 2, data record 02003FA31F152D2400FA09

Byte 1	Byte 2	Byte 3-6	Byte 7	Byte 8	Byte 9-10	Byte 11
0x02	0x00	0x3FA31F15	0x2D	0x24	0x00FA	0x09
Packet identifier	Namur status	Measured value	Unit	Battery	Temperature	Angle of inclination
2	0 = OK	1.27439	0x2D = 45 = m	36 %	25 °C	9°

Packet 5, data record 05047FFFFFFFF2D24010442412A784105329B0000565409

Byte 1	Byte 2	Byte 3-6	Byte 7	Byte 8	Byte 9-10	Byte 11-18	Byte 19-22	Byte 23
0x05	0x04	0x7FFFFFFFF	0x2D	0x24	0x0104	0x42412A 784105329B	0x00005654	0x09
Packet identifier	Namur status	Measured value	Unit	Battery	Temperature	Position	VEGA Device status	Angle of inclination
5	4 = fault	7FFFFFFFF = Not a Number	0x2D = 45 = m	36 %	26 °C	48.2915 8.32485	22100	9°

9.4 Dimensions

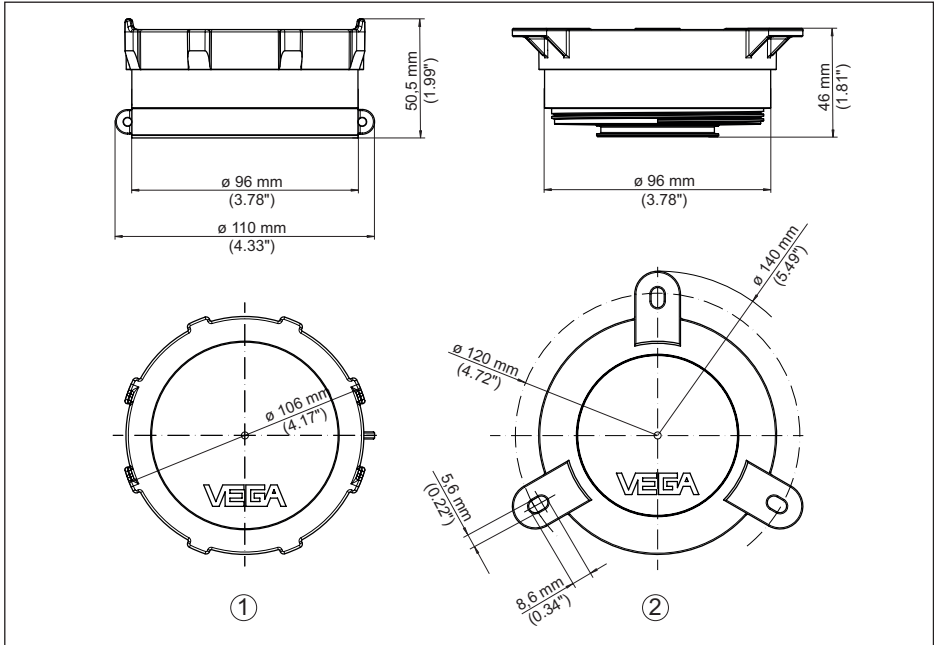


Fig. 10: Dimensions VEGAPULS Air 23

- 1 Version for adhesive and tension belt mounting
- 2 Version for ceiling mounting

9.5 Industrial property rights

VEGA product lines are global protected by industrial property rights. Further information see www.vega.com.

VEGA Produktfamilien sind weltweit geschützt durch gewerbliche Schutzrechte.

Nähere Informationen unter www.vega.com.

Les lignes de produits VEGA sont globalement protégées par des droits de propriété intellectuelle. Pour plus d'informations, on pourra se référer au site www.vega.com.

VEGA lineas de productos están protegidas por los derechos en el campo de la propiedad industrial. Para mayor información revise la pagina web www.vega.com.

Линии продукции фирмы ВЕГА защищаются по всему миру правами на интеллектуальную собственность. Дальнейшую информацию смотрите на сайте www.vega.com.

VEGA系列产品在全球享有知识产权保护。

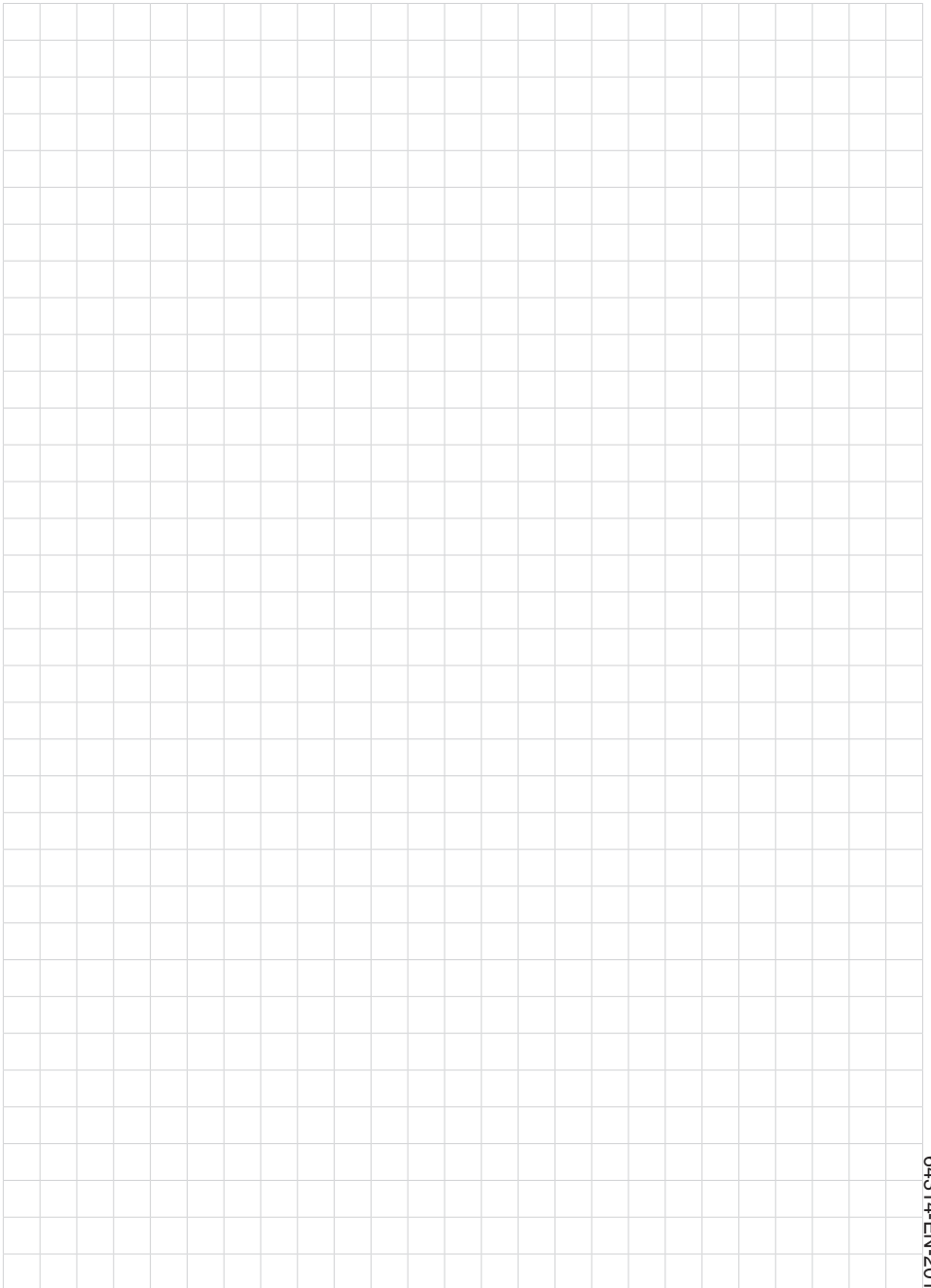
进一步信息请参见网站 < www.vega.com。

9.6 Licensing information for open source software

Open source software components are also used in this device. A documentation of these components with the respective license type, the associated license texts, copyright notes and disclaimers can be found on our homepage.

9.7 Trademark

All the brands as well as trade and company names used are property of their lawful proprietor/originator.



Printing date:

VEGA

All statements concerning scope of delivery, application, practical use and operating conditions of the sensors and processing systems correspond to the information available at the time of printing.

Subject to change without prior notice

© VEGA Grieshaber KG, Schiltach/Germany 2020



64314-EN-201215

VEGA Grieshaber KG
Am Hohenstein 113
77761 Schiltach
Germany

Phone +49 7836 50-0
Fax +49 7836 50-201
E-mail: info.de@vega.com
www.vega.com