

# ***PCMCIA Wireless LAN Card***

**User's Manual**

Rev 1.0

## Regulatory compliance

### FCC Warning

This equipment has been tested and found to comply with the limits for a Class B digital device, pursuant to part 15 of the FCC Rules. These limits are designed to provide reasonable protection against harmful interference in a residential installation. This equipment generates, uses and can radiate radio frequency energy and, if not installed and used in accordance with the instructions, may cause harmful interference to radio communications. However, there is no guarantee that interference will not occur in a particular installation. If this equipment does cause harmful interference to radio or television reception, which can be determined by turning the equipment off and on, the user is encouraged to try to correct the interference by one or more of the following measures:

- Reorient or relocate the receiving antenna.
- Increase the separation between the equipment and receiver.
- Connect the equipment into an outlet on a circuit different from that to which the receiver is connected.
- Consult the dealer or an experienced radio/TV technician for help.

You are cautioned that changes or modifications not expressly approved by the party responsible for compliance could void your authority to operate the equipment.

### IMPORTANT NOTE:

#### Federal Communications Commission (FCC) Radiation Exposure Statement

This equipment complies with FCC radiation exposure limits set forth for an uncontrolled environment.

This equipment should be installed and operated with minimum distance 2.5cm between the radiator & your body.

### CE Mark Warning

This is a Class B product. In a domestic environment, this product may cause radio interference, in which case the user may be required to take adequate measures.

FCC Caution: To assure continued compliance, (example - use only shielded interface cables when connecting to computer or peripheral devices). Any changes or modifications not expressly approved by the party responsible for compliance could void the user's authority to operate this equipment.

This transmitter must not be co-located or operating in conjunction with any other antenna or transmitter.

### About this manual

This User's Manual describes how to install and operate your PCMCIA Wireless LAN Card. Please read this manual before you install the product.

This manual includes the following topics:

- Product description and features.
- Hardware installation procedure.
- Software installation procedure.
- FAQ

## ***Table of Contents***

<a href="#">Regulatory compliance</a> .....	2
<a href="#">About this manual</a> .....	3
<b><a href="#">Chapter 1 - Introduction</a></b> .....	<b>5</b>
<a href="#">Features</a> .....	5
<a href="#">What is Wireless LAN?</a> .....	6
<a href="#">Wireless LAN Modes</a> .....	6
<a href="#">Notes on Wireless LAN Configuration</a> .....	7
<b><a href="#">Chapter 2 - Hardware Installation</a></b> .....	<b>8</b>
<a href="#">Package Contents</a> .....	8
<a href="#">System Requirements for the Adapter</a> .....	8
<a href="#">Hardware description</a> .....	8
<a href="#">Inserting the Wireless LAN Card</a> .....	9
<a href="#">LED Indicators</a> .....	9
<a href="#">Ejecting the Wireless LAN card</a> .....	10
<b><a href="#">Chapter 3 – Driver Installation for Windows</a></b> .....	<b>11</b>
<a href="#">Driver installation for Windows 95 OSR2</a> .....	11
<a href="#">Driver installation for Windows 98</a> .....	14
<a href="#">Driver installation for Windows 2000</a> .....	17
<a href="#">Driver installation for Windows ME</a> .....	20
<a href="#">Driver installation for Windows NT4.0</a> .....	22
<a href="#">Driver installation for Windows XP</a> .....	26
<b><a href="#">Chapter 4 – Installing and Using the Wireless Utility</a></b> ....	<b>28</b>
<a href="#">Installation in Windows</a> .....	28
<a href="#">Firmware Upgrade</a> .....	31
<a href="#">Using Wireless Utility In Windows XP</a> .....	32
<a href="#">Use Windows Wireless Network Configuration</a> .....	32
<a href="#">Use Wireless LAN Utility</a> .....	35
<a href="#">Use Wireless LAN Utility In Windows 95, 98, 2000, NT 4.0 and ME</a> ..	38
<a href="#">Configuring the PCMCIA Wireless LAN Card</a> .....	39
<b><a href="#">Chapter 5 – Installing Network Protocols</a></b> .....	<b>44</b>
<a href="#">Installing the Network Protocols for Windows 98 and Millennium</a> .....	44
<b><a href="#">Appendix A – FAQ</a></b> .....	<b>47</b>
<b><a href="#">Appendix B – Specifications</a></b> .....	<b>48</b>

## ***Chapter 1 - Introduction***

Thank you for purchasing the PCMCIA Wireless LAN Card. This high-speed PCMCIA Wireless LAN Card provides you with an innovative wireless networking solution. The Adapter is easy to set up and use. With this innovative wireless technology, you can share files and printers on the network –without inconvenient wires!

The Adapter is a network Adapter with a rate of 1, 2, 5.5, and 11 Mbps operating in the ISM band using Direct Sequence Spread Spectrum (DSSS) transmission implementing the IEEE 802.11b standard. This Adapter provides Device Drivers for Windows Operating Systems. It also provides tools for the configuration of the Adapter. The tool, as well as the installation steps of the plug-and-play procedure for the Windows operating systems, is described in this document.

### **Features**

The PCMCIA Wireless LAN Card offers compliance with the IEEE 802.11b specification. This feature allows them to communicate with other wireless devices that support the standard. Features of the Adapter are:

- **Uses 2.4GHz frequency band, which complies with worldwide requirement**
- **Wireless interface following the IEEE 802.11b standard**
- **Using PCMCIA interface**
- **Enciphering/deciphering of wireless data by the implementation of the WEP algorithm**
- **Wire-free access to networked resources from anywhere beyond the notebook**
- **Allows users move between Access Points without resetting their connection reconfiguration**
- **Delivers data rate up to 11 Mbps**
- **Supports 11, 5.5, 2, and 1 Mbps rates**
- **Provide PCMCIA Wireless LAN Card Configuration utility**
- **The Adapter uses external Antenna with LEDs indicating Power and Link**
- **Supports most popular operating systems**

## What is Wireless LAN?

Wireless Local Area Network (WLAN) systems offer a great number of advantages over traditional wired systems. WLAN is flexible and easy to setup and manage. They are also more economical than wired LAN systems.

Using radio frequency (RF) technology, WLAN transmit and receive data through the air. WLAN combine data connectivity with user mobility. For example, users can roam from a conference room to their office without being disconnected from the LAN.

Using WLAN, users can conveniently access-shared information, and network administrators can configure and augment networks without installing or moving network cables.

WLAN technology provides users with many convenient and cost saving features:

- **Mobility:** WLAN provide LAN users with access to real-time information anywhere in their organization, providing service opportunities that are impossible with wired networks.
- **Ease of Installation:** Installing is easy for novice and expert users alike, eliminating the need to install network cables in walls and ceilings.
- **Scalability:** WLAN can be configured in a variety of topologies to adapt to specific applications and installations. Configurations are easily changed and range from peer-to-peer networks suitable for a small number of users to full infrastructure networks of thousands of users roaming over a broad area.

## Wireless LAN Modes

Wireless LANs can be configured in one of two ways:

<b>Ad-hoc Networking</b>	Also known as a peer-to-peer network, an ad-hoc network is one that allows all workstations and computers in the network to act as servers to all other users on the network. Users on the network can share files, print to a shared printer, and access the Internet with a shared modem. However, with ad-hoc networking, users can only communicate with other wireless LAN computers that are in the wireless LAN workgroup, and are within range.
<b>Infrastructure Networking</b>	Infrastructure networking differs from ad-hoc networking in that it includes an access point. Unlike the ad-hoc structure where users on the LAN contend the shared bandwidth, on an infrastructure network the access point can manage the bandwidth to maximize

	<p>bandwidth utilization.</p> <p>Additionally, the access point enables users on a wireless LAN to access an existing wired network, allowing wireless users to take advantage of the wired networks resources, such as Internet, email, file transfer, and printer sharing.</p> <p>Infrastructure networking has the following advantages over ad-hoc networking:</p> <ul style="list-style-type: none"><li>• <b>Extended range:</b> each wireless LAN computer within the range of the access point can communicate with other wireless LAN computers within range of the access point.</li><li>• <b>Roaming:</b> the access point enables a wireless LAN computer to move through a building and still be connected to the LAN.</li><li>• <b>Wired to wireless LAN connectivity:</b> the access point bridges the gap between wireless LANs and their wired counterparts.</li></ul>
--	--

## Notes on Wireless LAN Configuration

When configuring a wireless LAN (WLAN), be sure to note the following points:

- Optimize the performance of the WLAN by ensuring that the distance between access points is not too far. In most buildings, WLAN Adapters operate within a range of 100 ~ 300 feet, depending on the thickness and structure of the walls.
- Radio waves can pass through walls and glass but not metal. If there is interference in transmitting through a wall, it may be that the wall has reinforcing metal in its structure. Install another access point to circumvent this problem.
- Floors usually have metal girders and metal reinforcing struts that interfere with WLAN transmission.

This concludes the first chapter. The next chapter deals with the hardware installation of the Adapter.

## ***Chapter 2 - Hardware Installation***

This chapter covers connecting your PCMCIA Wireless LAN Card to PCMCIA slot of notebook.

### **Package Contents**

Please make sure that items below are included on package.

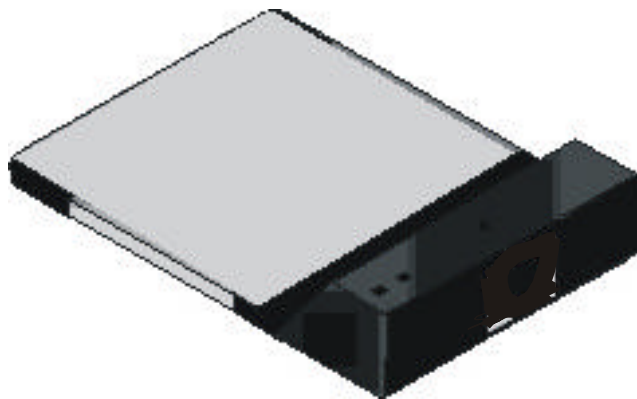
- ✓ One PCMCIA Wireless LAN Card
- ✓ One CD containing drivers and documentation
- ✓ One Quick Installation Guide

### **System Requirements for the Adapter**

- Operating System: Microsoft Windows 95/98/ME/2000/NT4.0/XP
- Notebook with CD-ROM drive
- One free PCMCIA slot
- Pentium-Class 90MHz or higher

### **Hardware description**

The Wireless LAN Card is encased in a stainless compact frame and has a 68-pin connector for attaching to the PCMCIA port of notebook.



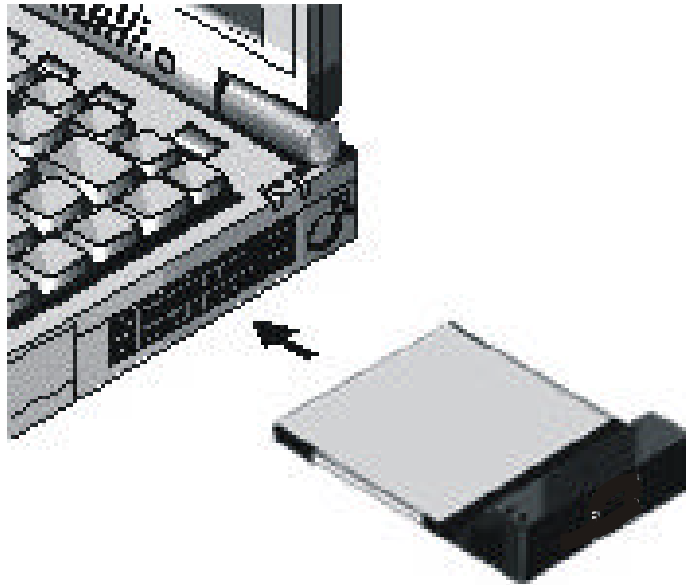


## Inserting the Wireless LAN Card

**NOTE:** These instructions apply to most notebook computers. For detailed information on inserting PC cards into your notebook, consult the notebook manual.

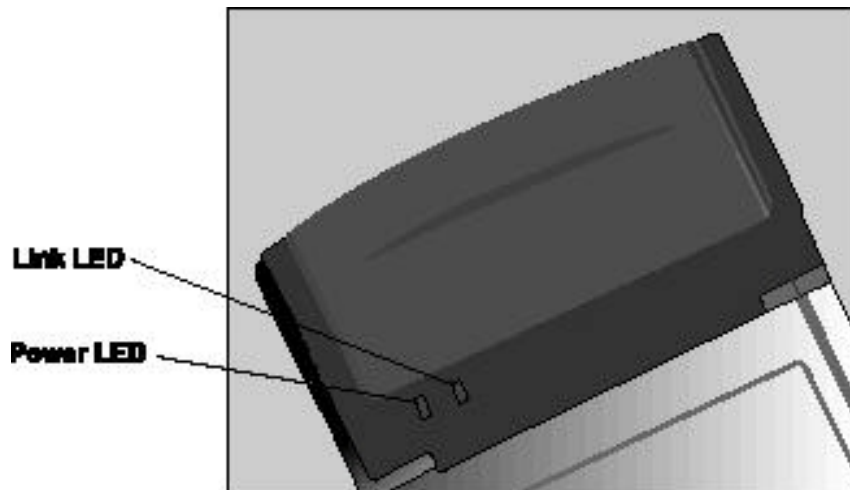
Follow the procedure below to install the Wireless LAN card.

1. With 68-pin connector of the card facing the PCMCIA slots on notebook, slide the card all the way into an empty slot.



2. Connect to a network.

## LED Indicators



The following table describes the meaning of LED indicators:

LED	MEANING
POWER	Indicates that the Adapter is powered on (solid green).
LINK	Indicates link status. The LED lights up (solid green) while the wireless connection is linked. If the LED is blinking green, the adapter is searching for possible wireless connection.

## Ejecting the Wireless LAN card

After disconnecting from the LAN, you can eject the Wireless LAN card from the PC Card slot of notebook.

**NOTE:** *In Windows XP/2000/ME/98/95 operating systems, you do not have to power down the notebook to remove the card. The card is hot-swappable — you can remove the card when the notebook is powered on. However, Microsoft recommends that you stop the card. Refer to your Windows 2000/ME/98/95 online help for information on stopping the Wireless LAN card.*

Most notebooks have an eject lever or button for ejecting PC cards from the PC slots. Consult your notebook manual for details.

---

<b>Warning!</b>	<b><i>To prevent data loss, do not eject the Wireless LAN card when a data transmission is taking place. Exit your communications program normally, stop the card if necessary, and then remove the card.</i></b>
-----------------	---

---

After hardware installation is completed, please go to Chapter 3 to install driver on different Operating System.

## Chapter 3 – Driver Installation for Windows

The following sections cover PCMCIA Wireless LAN Card driver installation in the Windows Operating Systems.

**Note:** You have to install your hardware first before you begin to install the drivers.

### Driver installation for Windows 95 OSR2

Follow the steps below to install the PCMCIA Wireless LAN Card drivers for Windows 95 OSR2.

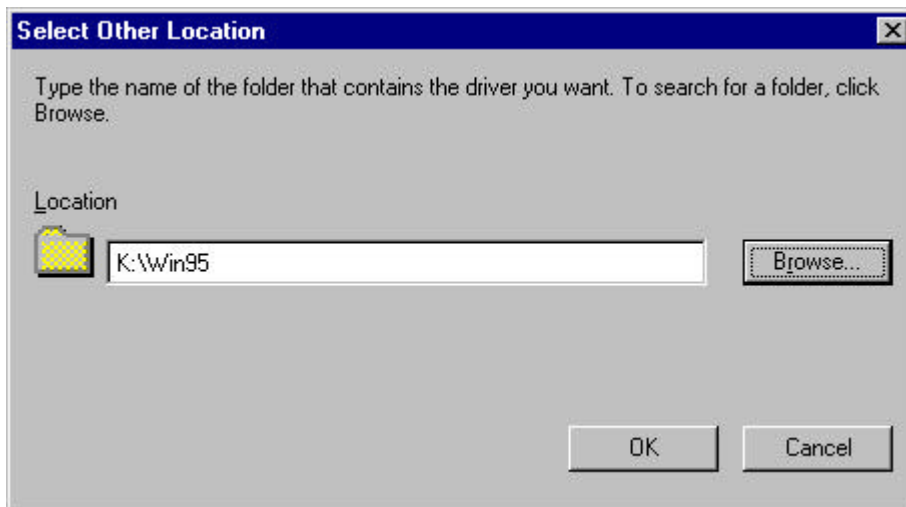
1. Insert the PCMCIA Wireless LAN Card to PCMCIA slot of notebook first. (Refer to Chapter 2 – Hardware installation.)
2. After Windows 95 OSR2 detects the PCMCIA Wireless LAN Card, the *Update Device Driver Wizard* window appears. Clicks **Next** to continue the installation.



3. Windows searches for the driver and the following screen appears:



4. Click **Other Locations** to bring up the following window:



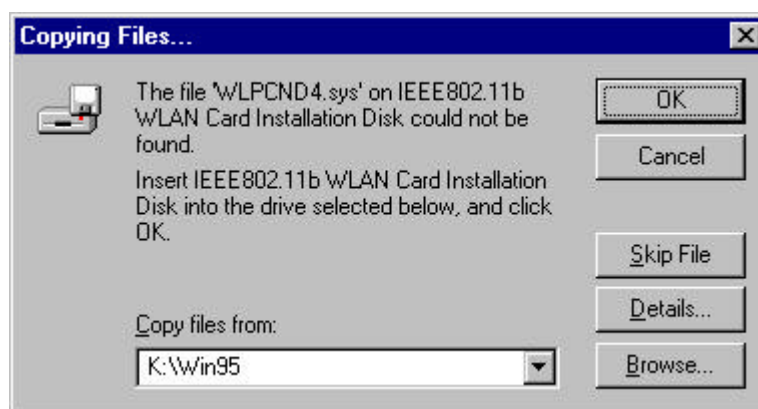
5. Type **K:\Win95** where **K** is your CD-ROM drive letter. Then click **OK**. The following screen appears:



6. Click **Finish** to continue. Windows may prompt you the following window to ask you insert the disc.



7. Click **OK** to continue.



8. Again type **K:WIN95:** where **K** is your CD-ROM drive letter and click **OK**.

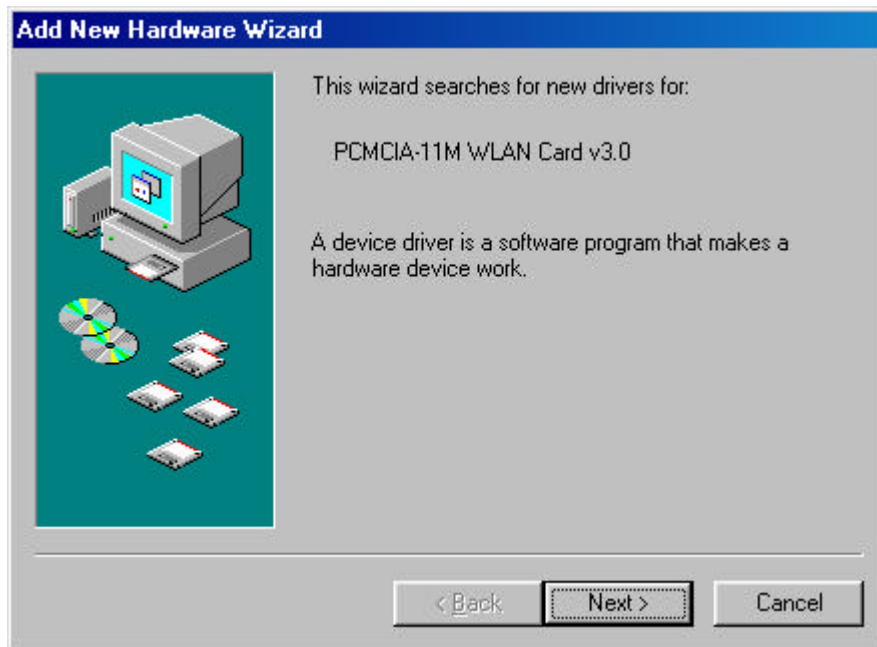
**NOTE:** If you did not install the Windows 95 OSR2 from your hard drive, Windows will prompt you to input the path to the Windows 95 CD-ROM. Follow the instructions on your screen, and then click **OK** to continue.

Then system will start to install Wireless LAN Utility. Please refer to procedures at Chapter 4.

## Driver installation for Windows 98

Follow the steps below to install the PCMCIA Wireless LAN Card drivers for Windows 98.

1. Insert the PCMCIA Wireless LAN Card to PCMCIA slot of notebook first. (Refer to Chapter 2 – Hardware installation.)
2. After Windows 98 detects the PCMCIA Wireless LAN Card, the *Add New Hardware Wizard* window appears. Clicks **Next** to continue the installation.



3. A screen appears prompting you to select an installation method. Select **Search for the best driver for your device. (Recommended)** and click **Next** to continue.



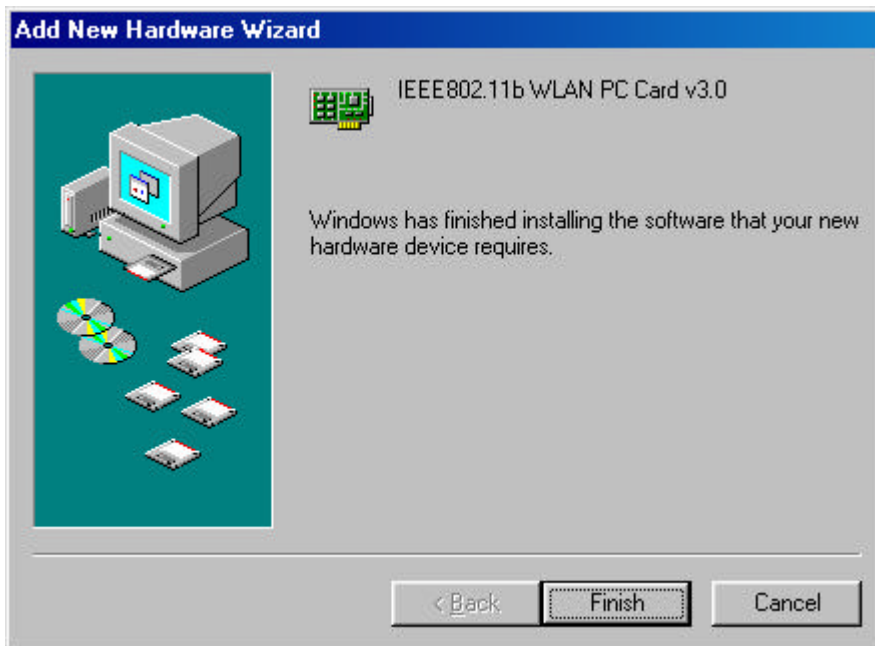
4. Ensure that the **CD-ROM drive** is selected. Inserts the driver CD-ROM into your CD-ROM drive and clicks **Next** to continue.



5. The following screen appears showing the driver search result. Click **Next** to continue the installation.

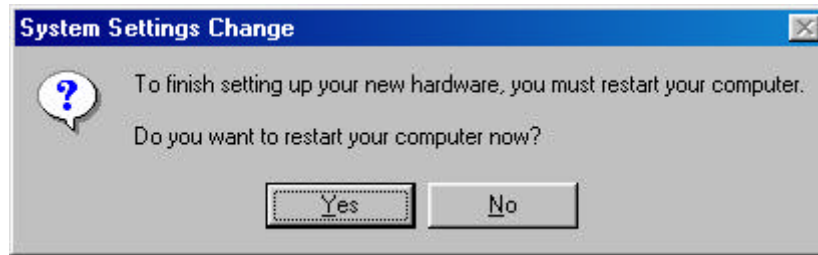


6. Windows 98 copies files to your hard disk. The following screen will appear to inform you when the software installation has finished. Click **Finish** to finish the installation.



7. The following screen will ask you to restart your computer to finish the installation. Click **Yes** to reboot the system. After system reboot, the Wireless LAN Utility will be installed automatically. Please go to Chapter 4 to install the utility.





**NOTE:** In most cases, Windows will automatically copy all of the files needed for networking. If Windows asks you for the files and prompts you to input the path to the files. Follow the instructions on your screen, and then click **OK** to continue.

## Driver installation for Windows 2000

Follow the steps below to install the PCMCIA Wireless LAN Card drivers for Windows 2000.

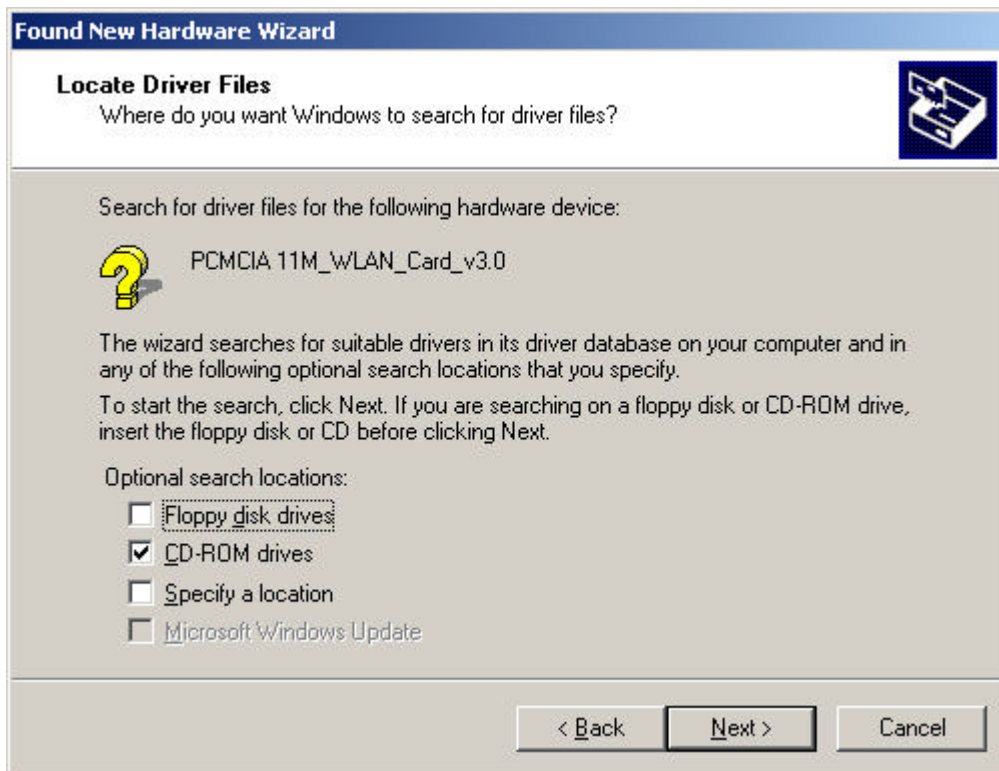
1. Insert the PCMCIA Wireless LAN Card to PCMCIA slot of notebook first. (Refer to Chapter 2 – Hardware installation.)
2. After Windows 2000 detects the PCMCIA Wireless LAN Card, the *Found New Hardware Wizard* window appears. Click **Next** to start the installation.



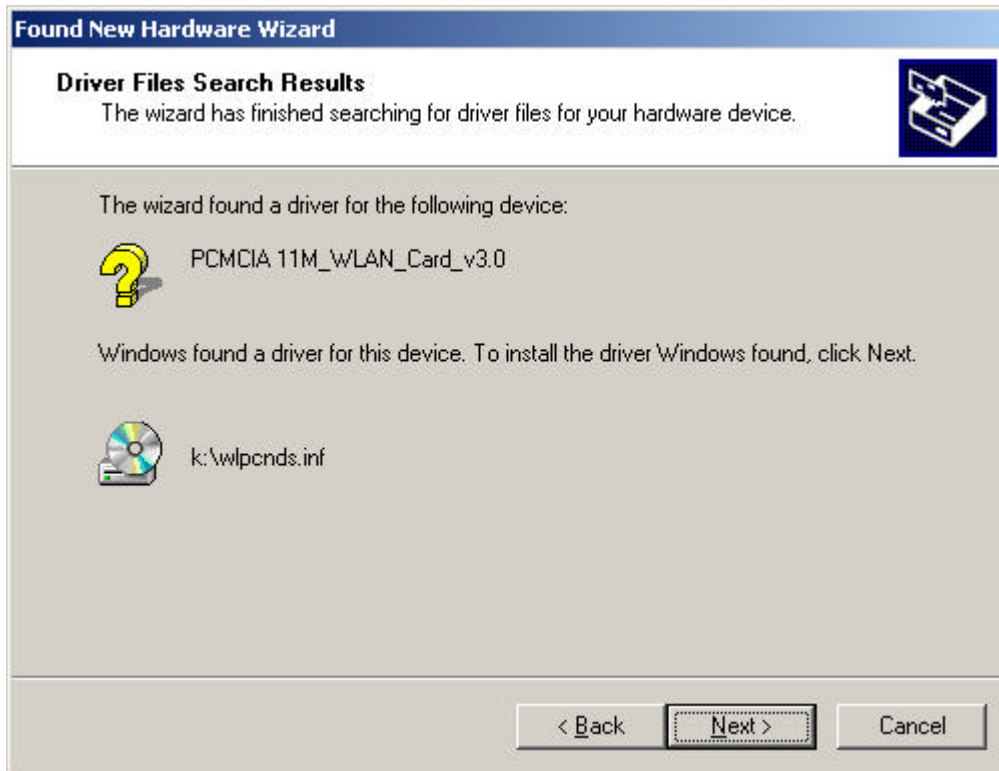
3. A screen appears prompting you to select an installation method. Select **Search for a suitable driver for my device (recommended)** and click **Next** to continue.



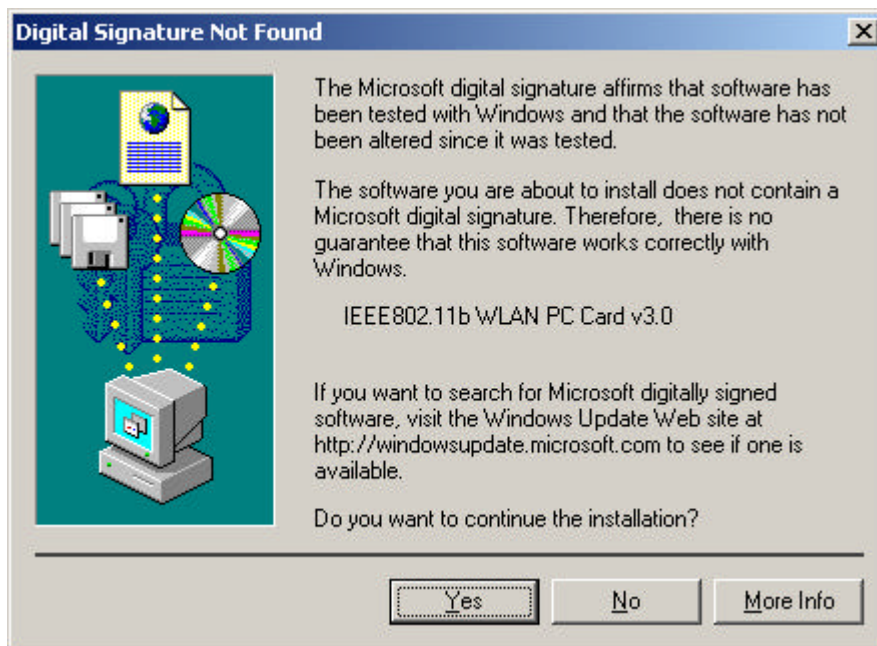
4. Ensure that the **CD-ROM driver** is selected and insert the driver CD-ROM into your CD-ROM drive and click **Next** to continue.



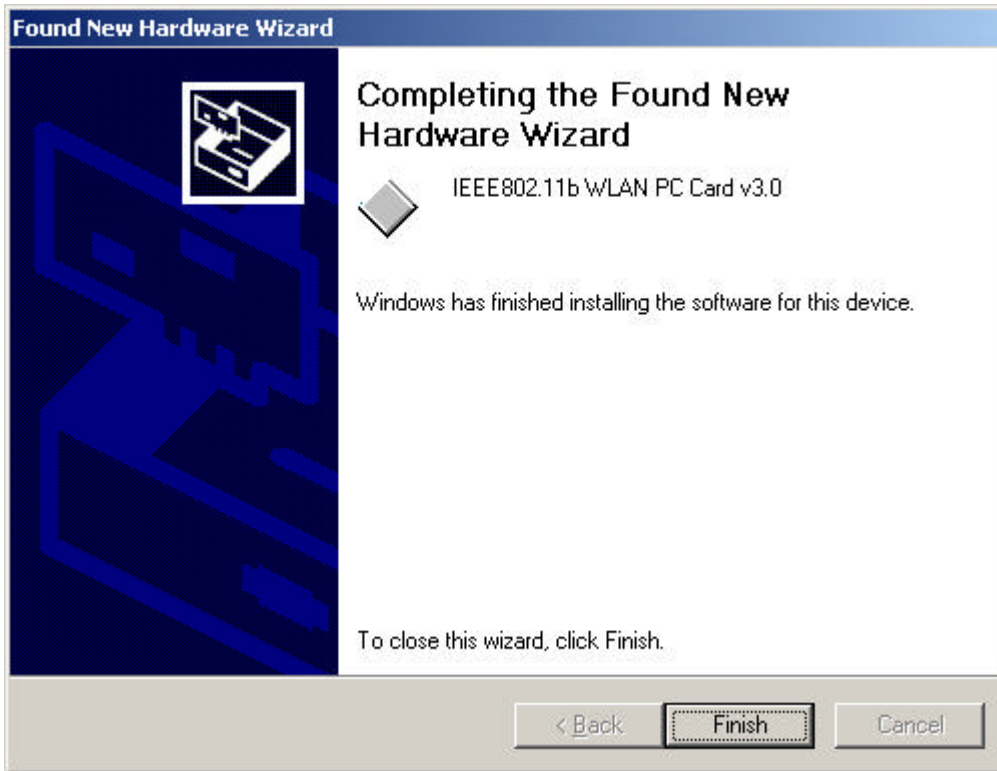
5. The following screen appears showing the driver search result. Click **Next** to continue the installation.



6. The following screen appears. Click **Yes** to continue



7. The Windows has finished installing software for the device. Click **Finish** to finish the installation.



Then system will start to install Wireless LAN Utility. Please refer to procedures at Chapter 4.

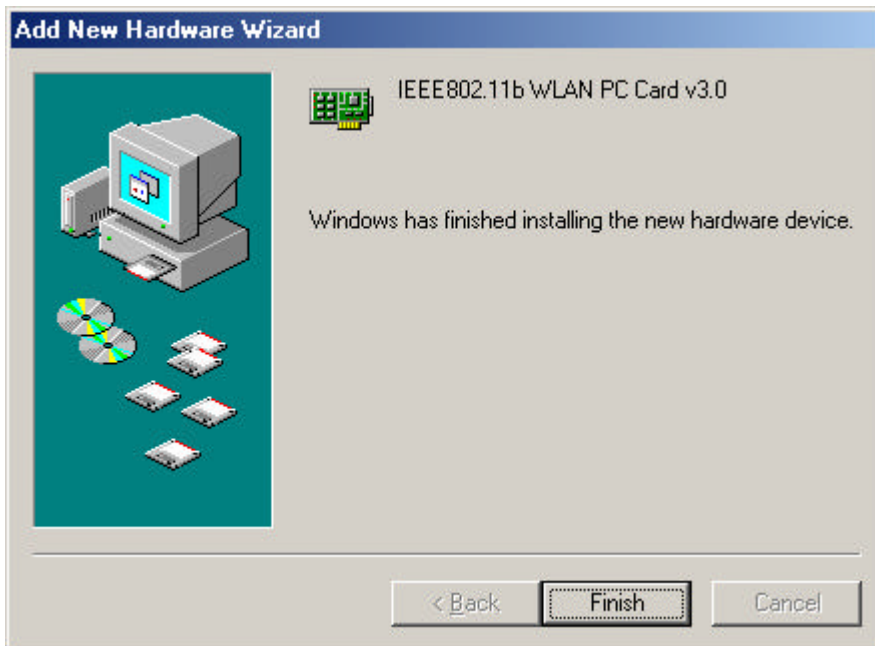
## Driver installation for Windows ME

Follow the steps below to install the PCMCIA Wireless LAN Card drivers for Windows ME.

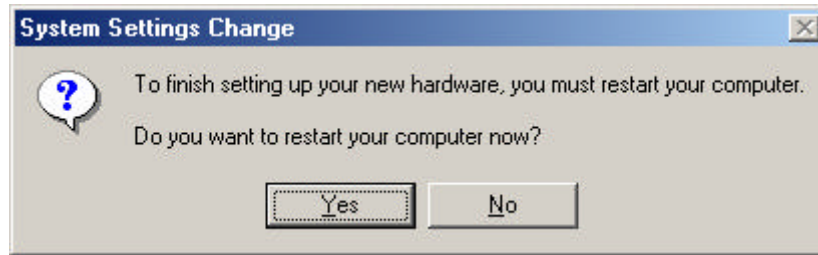
1. Insert the PCMCIA Wireless LAN Card to PCMCIA slot of notebook first. ( Refer to Chapter 2 – Hardware installation. )
2. After Windows ME detects the PCMCIA Wireless LAN Card, the *Add New Hardware Wizard* window appears. Select **Automatic search for a better driver (Recommended)** and insert the driver CD-ROM into CD-ROM drive and click **Next** to continue.



3. The system will find the setup files and follow the instruction to copy files to your hard disk. The following screen will appear when the software installation has finished. Click **Finish** to finish the installation.



4. The following screen will ask you to restart your computer to finish the hardware setting up. Click **Yes** to reboot the system. After system reboot, the Wireless LAN Utility will be installed automatically. Please go to Chapter 4 to install the utility.



**NOTE:** In most cases, Windows will automatically copy all of the files needed for networking. If Windows asks you for the files and prompts you to input the path to the files. Follow the instructions on your screen, and then click **OK** to continue.

## Driver installation for Windows NT4.0

This installation procedure assumes that you have installed the network component on your computer.

To check whether the network component has been installed, double click the **Network** icon in the **Control Panel**. If it has not been installed, refer to the Windows NT 4.0 installation guide for instructions on installing the component.

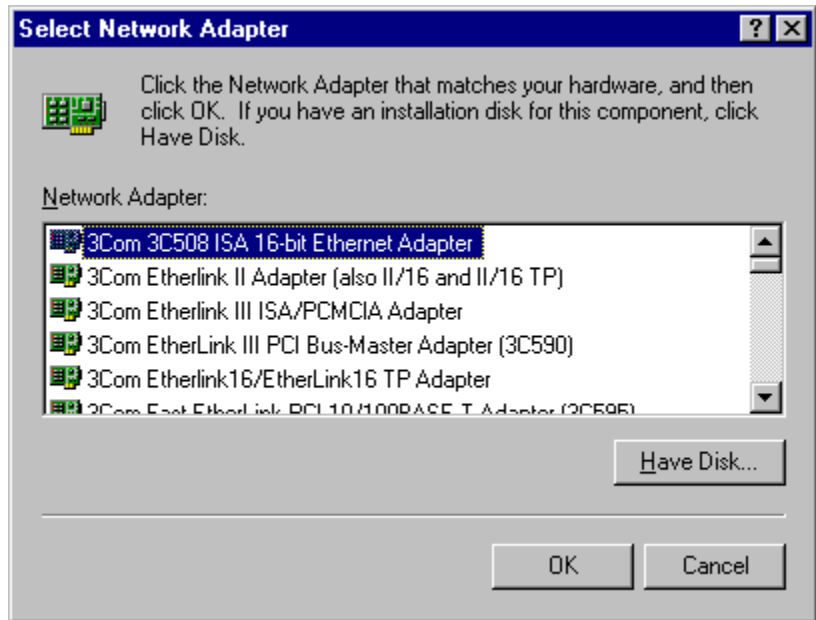
Follow the steps below to install the driver.

5. Insert the PCMCIA Wireless LAN Card to PCMCIA slot of notebook first. (Refer to Page8 – Hardware installation. )
6. Log in to NT 4.0 as **Administrator**.
7. Double click the **Network** icon in the **Control Panel**, and select the **Adapters** tab as shown in the following screen. Then click **Add** to add a new adapter to continue.

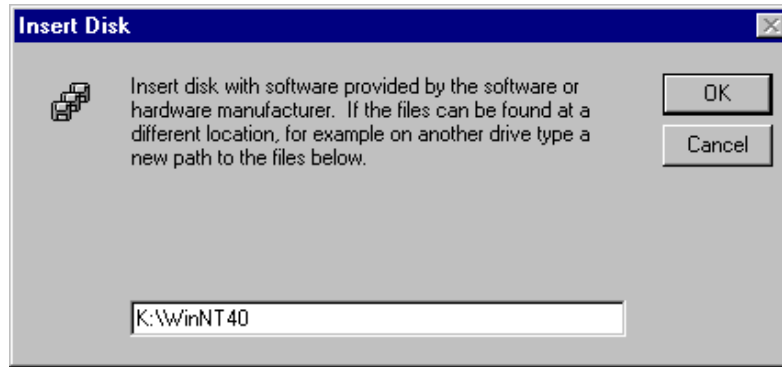




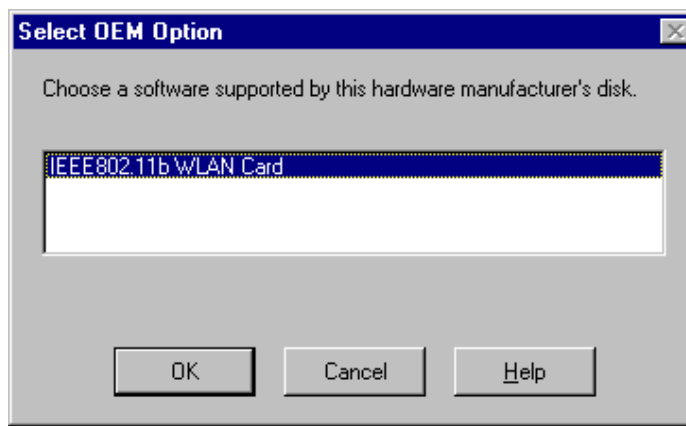
8. The following screen appears. Then click **Have Disk** to continue.



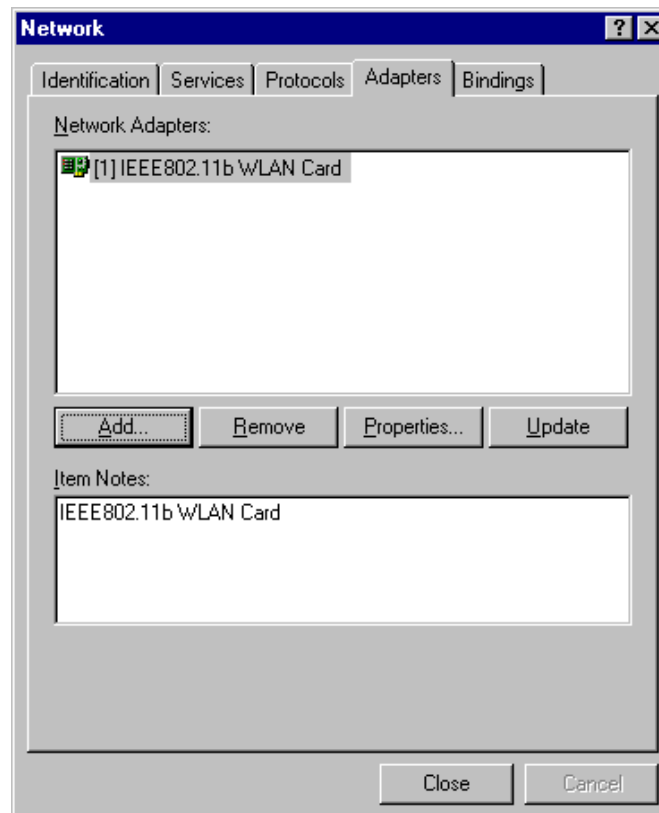
9. The following screen appears. Type **K:\ WinNT40** where **K** is your CD-ROM drive letter. Insert the driver CD-ROM, and click **OK** to continue.



10. After finding the installation file, the *Select OEM Option* window is displayed as follows. Select **IEEE802.11b WLAN Card** and click **OK** to continue.

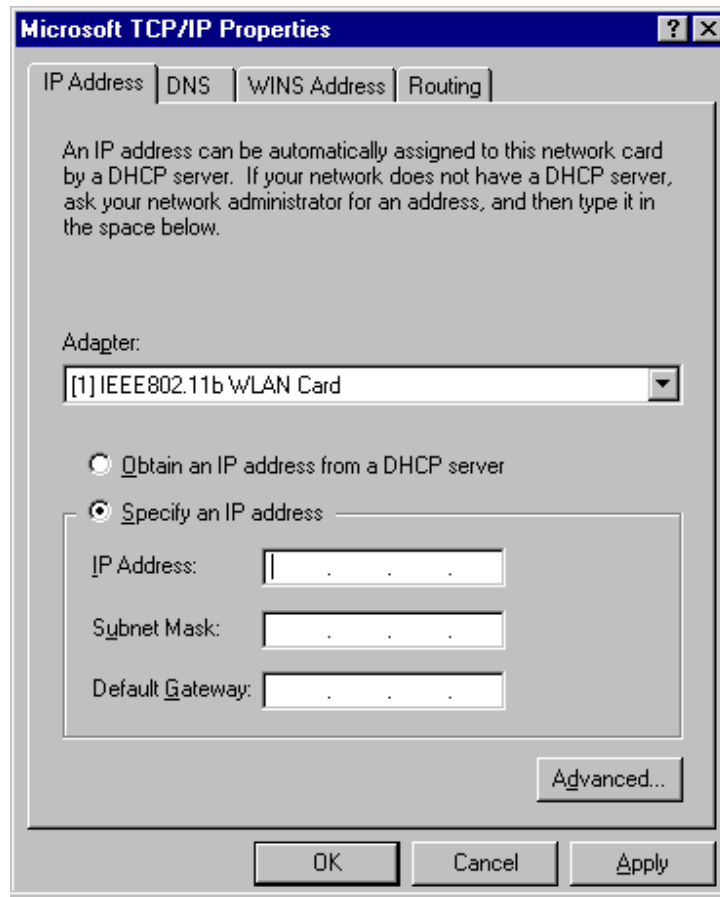


11. You are returned to the *Network* window. Click **Close** to exit the *Network* window.

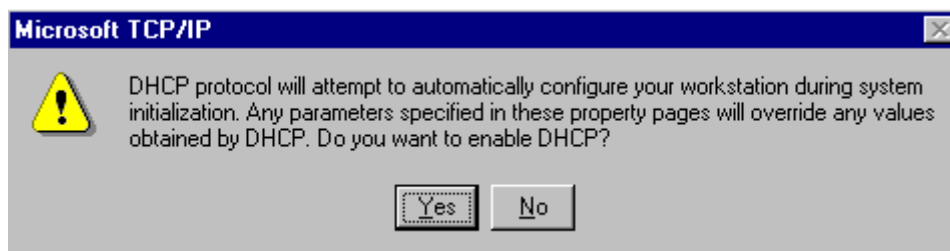




12. The Microsoft TCP/IP properties window appears. Please specify an IP address or select to obtain an IP address from DHCP Server and then click **OK** to continue.



13. The following window appears. Please read the description and click **Yes** to continue if there is no questions.



14. The following window appears. Click **Yes** to reboot the system. After system reboot, the Wireless LAN Utility will be installed automatically. Please go to Chapter 4 to install the utility.

