

# Maximum Permissible Exposure (MPE) Evaluation Report

**Report No. : TS13010057-EME**

**Model No. : TTD-91R**

**Issued Date : Jan. 16, 2013**

**Applicant: Tranwo Technology Corp.**  
**No. 236, Sec. 3, Huanbei Rd., Jubei City, Hsinchu County**  
**30265, Taiwan**

**Test Method/ Standard: FCC 1.1310**

**Test By: Intertek Testing Services Taiwan Ltd.**  
**No. 11, Lane 275, Ko-Nan 1 Street, Chia-Tung Li,**  
**Shiang-Shan District, Hsinchu City, Taiwan**

It may be duplicated completely for legal use with the allowance of the applicant. It shall not be reproduced except in full, without the written approval of Intertek Laboratory. The test result(s) in this report only applies to the tested sample(s).



**The test report was prepared by:**

Sign on File  
Candy Liu / Assistant

**These measurements were taken by:**

Sign on File  
William Shia/ Senior Engineer

**The test report was reviewed by:**

**Name** Jimmy Yang  
**Title** Engineer



## Table of Contents

Summary of Tests .....	3
1. General information .....	4
1.1 Identification of the EUT .....	4
1.2 Adapter information .....	4
1.3 Additional information about the EUT.....	5
1.4 Antenna description.....	5
2. Test specifications .....	6
2.1 Introduction .....	6
2.2 RF Exposure Limit .....	7
2.3 RF Exposure calculations.....	9
2.4 Operation mode .....	10
2.5 Test equipment .....	10
2.6 Test Set-up.....	11
3. Test results .....	12
Appendix A1: External photo of EUT.....	13
Appendix A2: Internal photo of EUT.....	15



### Summary of Tests

#### MPE Evaluation meet FCC OET No. 65: 1997, IEEE C95.1-2005

Test	Reference	Results
MPE Evaluation	FCC Guidelines for Human Exposure IEEE C95.1	Complies

## 1. General information

### 1.1 Identification of the EUT

Product:	Digital Wireless Color Baby Monitor
Model No.:	TTD-91R
FCC ID.:	O6LTTD-91R
Frequency Range:	2408.63MHz ~ 2467.13 MHz
Channel Number:	22Channel
Access scheme:	GFSK, FHSS
Power Supply:	1.DC 6 V from adapter 2. DC 3.7 V from Li-ion Rechargeable battery
Power Cord:	N/A
Sample Received:	Jan.09, 2013
Test Date(s):	Jan.09, 2013 ~ Jan.15, 2013
Note 1:	This report is for the exclusive use of Intertek's Client and is provided pursuant to the agreement between Intertek and its Client. Intertek's responsibility and liability are limited to the terms and conditions of the agreement. Intertek assumes no liability to any party, other than to the Client in accordance with the agreement, for any loss, expense or damage occasioned by the use of this report. Only the Client is authorized to permit copying or distribution of this report and then only in its entirety. Any use of the Intertek name or one of its marks for the sale or advertisement of the tested material, product or service must first be approved in writing by Intertek. The observations and test results in this report are relevant only to the sample tested. This report by itself does not imply that the material, product, or service is or has ever been under an Intertek certification program.

Note 2: When determining the test conclusion, the Measurement Uncertainty of test has been considered.

### 1.2 Adapter information

The EUT will be supplied with a power supply from below list:

No.	Brand	Model no.	Specification
Adapter	N/A	SSW-2256US	I/P: 100-240 Vac, 50-60 Hz, 0.25A O/P: 6.0V, 800 mA

### 1.3 Additional information about the EUT

The EUT is a Digital Wireless Color Baby Monitor, and was defined as information technology equipment.

#### Channel Table

Channel	TX Freq	Channel	TX Freq
1	2408.63 MHz	12	2439.00 MHz
2	2412.00 MHz	13	2442.38 MHz
3	2414.25 MHz	14	2444.63 MHz
4	2417.63 MHz	15	2448.00 MHz
5	2422.13 MHz	16	2450.25 MHz
6	2425.50 MHz	17	2453.63 MHz
7	2427.75 MHz	18	2457.00 MHz
8	2430.00 MHz	19	2459.25 MHz
9	2432.25MHz	20	2461.50 MHz
10	2434.50MHz	21	2464.88MHz
11	2436.75MHz	22	2467.13MHz

For more detail features, please refer to User's manual as file name "Installation guide.pdf"

### 1.4 Antenna description

The EUT uses a permanently connected antenna.

Antenna Gain : 1.5 dBi max  
Antenna Type : Monopole antenna  
Connector Type : Fixed



## **2. Test specifications**

### **2.1 Introduction**

The EUT operates in the 2.4 GHz ISM band. Due to the EUT (include antenna) at its normal operation distance is at least 20 cm from the human body, the EUT was defined as a Mobile Device.

The reason to do the MPE Evaluation is to avoid the RF hazard to human body. The maximum output power and gain of the antenna were used to calculate the limited Power density (S) at 20 cm distance away from the product. The limit for Maximum Permissible Exposure (MPE) specified in FCC 1.1310 and Safety Code 6 are followed.

According to 1.1307 (b)(1), systems operating under the provisions of this section shall be operated in a manner that ensure that the public is not exposed to radio frequency energy level in excess of the Commission's guideline.

## 2.2 RF Exposure Limit

According to FCC 1.1310: The criteria listed in the following table shall be used to evaluate the environmental impact of human exposure to radio-frequency (RF) radiation as specified in 1.1307(b).

### SAR Test Exclusion Thresholds for 100 MHz – 6 GHz and ≤ 50 mm

Approximate SAR Test Exclusion Power Thresholds at Selected Frequencies and Test Separation Distances are illustrated in the following Table.

MHz	5	10	15	20	25	mm
150	39	77	116	155	194	SAR Test Exclusion Threshold (mW)
300	27	55	82	110	137	
450	22	45	67	89	112	
835	16	33	49	66	82	
900	16	32	47	63	79	
1500	12	24	37	49	61	
1900	11	22	33	44	54	
2450	10	19	29	38	48	
3600	8	16	24	32	40	
5200	7	13	20	26	33	
5400	6	13	19	26	32	
5800	6	12	19	25	31	
MHz	30	35	40	45	50	mm
150	232	271	310	349	387	SAR Test Exclusion Threshold (mW)
300	164	192	219	246	274	
450	134	157	179	201	224	
835	98	115	131	148	164	
900	95	111	126	142	158	
1500	73	86	98	110	122	
1900	65	76	87	98	109	
2450	57	67	77	86	96	
3600	47	55	63	71	79	
5200	39	46	53	59	66	
5400	39	45	52	58	65	
5800	37	44	50	56	62	

**Note:** 10-g Extremity SAR Test Exclusion Power Thresholds are 2.5 times higher than the 1-g SAR Test Exclusion Thresholds indicated above. These thresholds do not apply, by extrapolation or other means, to occupational exposure limits.

**SAR Test Exclusion Thresholds for 100 MHz – 6 GHz and > 50 mm**

Approximate SAR test exclusion power thresholds at selected frequencies and test separation distances are illustrated in the following table.

MHz	50	60	70	80	90	100	110	120	130	140	150	160	170	180	190	mm
100	474	481	487	494	501	507	514	521	527	534	541	547	554	561	567	mW
150	387	397	407	417	427	437	447	457	467	477	487	497	507	517	527	
300	274	294	314	334	354	374	394	414	434	454	474	494	514	534	554	
450	224	254	284	314	344	374	404	434	464	494	524	554	584	614	644	
835	164	220	275	331	387	442	498	554	609	665	721	776	832	888	943	
900	158	218	278	338	398	458	518	578	638	698	758	818	878	938	998	
1500	122	222	322	422	522	622	722	822	922	1022	1122	1222	1322	1422	1522	
1900	109	209	309	409	509	609	709	809	909	1009	1109	1209	1309	1409	1509	
2450	96	196	296	396	496	596	696	796	896	996	1096	1196	1296	1396	1496	
3600	79	179	279	379	479	579	679	779	879	979	1079	1179	1279	1379	1479	
5200	66	166	266	366	466	566	666	766	866	966	1066	1166	1266	1366	1466	
5400	65	165	265	365	465	565	665	765	865	965	1065	1165	1265	1365	1465	
5800	62	162	262	362	462	562	662	762	862	962	1062	1162	1262	1362	1462	

**SAR Test Exclusion Thresholds for < 100 MHz and < 200 mm**

Approximate SAR test exclusion power thresholds at selected frequencies and test separation distances are illustrated in the following table.

MHz	< 50	50	60	70	80	90	100	110	120	130	140	150	160	170	180	190	mm
100	237	474	481	487	494	501	507	514	521	527	534	541	547	554	561	567	mW
50	308	617	625	634	643	651	660	669	677	686	695	703	712	721	729	738	
10	474	948	961	975	988	1001	1015	1028	1041	1055	1068	1081	1095	1108	1121	1135	
1	711	1422	1442	1462	1482	1502	1522	1542	1562	1582	1602	1622	1642	1662	1682	1702	
0.1	948	1896	1923	1949	1976	2003	2029	2056	2083	2109	2136	2163	2189	2216	2243	2269	
0.05	1019	2039	2067	2096	2125	2153	2182	2211	2239	2268	2297	2325	2354	2383	2411	2440	
0.01	1185	2370	2403	2437	2470	2503	2537	2570	2603	2637	2670	2703	2737	2770	2803	2837	



### 2.3 RF Exposure calculations

From §FCC 1.1310 table 1, the maximum permissible RF exposure for an uncontrolled environment is 1 mW/(cm<sup>2</sup>) (or 10 W/m<sup>2</sup>)\*

Power density (S) is calculated by the following formula:

$$S = (P * G) / 4\pi R^2$$

where, S = Power density (mW/cm<sup>2</sup>)

P = Output power to antenna (mW)

R = Distance between radiating structure and observation point (cm)

G = Gain of antenna in numeric

$\pi = 3.1416$

Example:

Assume a mobile device operates at 2412MHz and its maximum output power is 50mW, and the maximum gain of antenna is 1 (numeric) /0dBi.

then the power density (S) =  $(50 * 1) / 4 * \pi * 20^2 = 0.00995$  (mW/cm<sup>2</sup>) (or = 0.0995 W/m<sup>2</sup>)

## 2.4 Operation mode

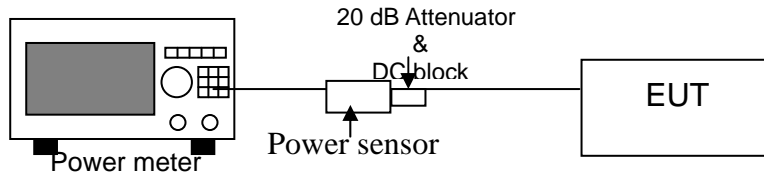
The EUT was supplied DC 6 V from adapter and 3.7V Li-ion battery (Test voltage: 120 Vac, 60 Hz) and it was run in TX mode that was controlled by Eng mode.

## 2.5 Test equipment

Equipment	Brand	Model No.	Serial No.	Calibration Date	Next Calibration Date
EMI Test Receiver	Rohde & Schwarz	ESCI	100018	2012/11/30	2013/11/29
Spectrum Analyzer	Rohde&schwarz	FSP30	100137	2012/06/25	2013/06/25
Spectrum Analyzer	Rohde&schwarz	FSEK30	100186	2012/02/06	2013/02/05
Horn Antenna (1-18G)	Schwarzbeck	BBHA 9120 D	9120D-456	2012/09/03	2014/09/03
Broadband Antenna	SCHWARZBECK	VULB 9168	9168-172	2011/07/26	2013/07/25
Pre-Amplifier	MITEQ	AFS44-00102650 --42-10P-44	1495287	2011/10/27	2013/10/26
Pre-Amplifier	MITEQ	JS4-26004000--2 7-8A	828825	2012/09/18	2014/09/18

Note: The above equipments are within the valid calibration period.

## 2.6 Test Set-up



**Remark: Cable loss is 2 dB.**

### 3. Test results

Channel	Frequency (MHz)	Antenna Gain (numeric)	Output power to antenna (mW)	Power density (mW/cm <sup>2</sup> )	Limit of power density (mW/cm <sup>2</sup> )
1	2408.63	1.41	73.11	0.020546135	1.0
12	2439	1.41	70.47	0.019802962	1.0
22	2467.13	1.41	62.37	0.017527910	1.0

The Notice in Installation Manual has been stated as below:

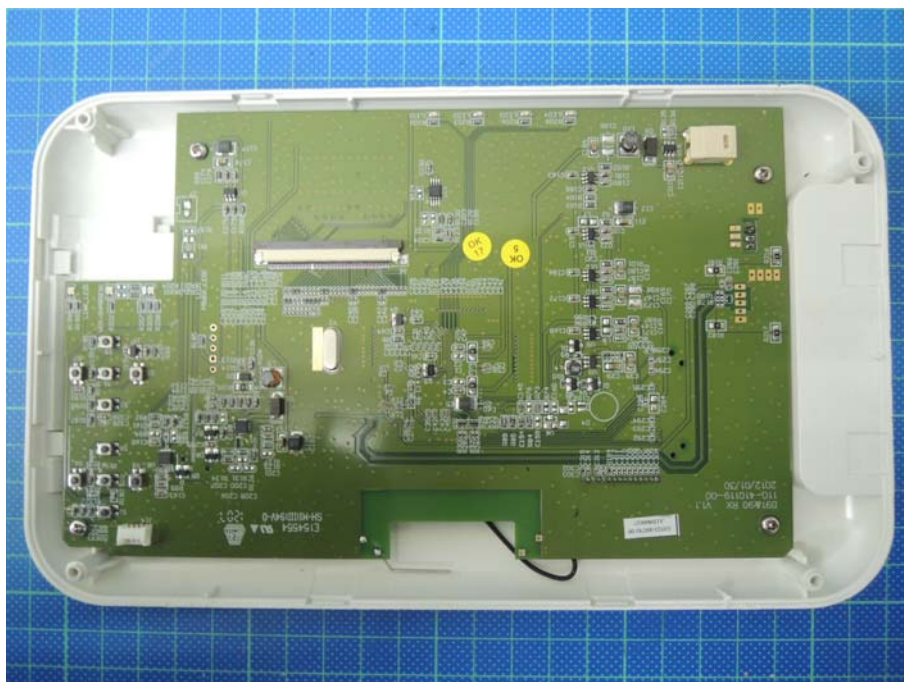
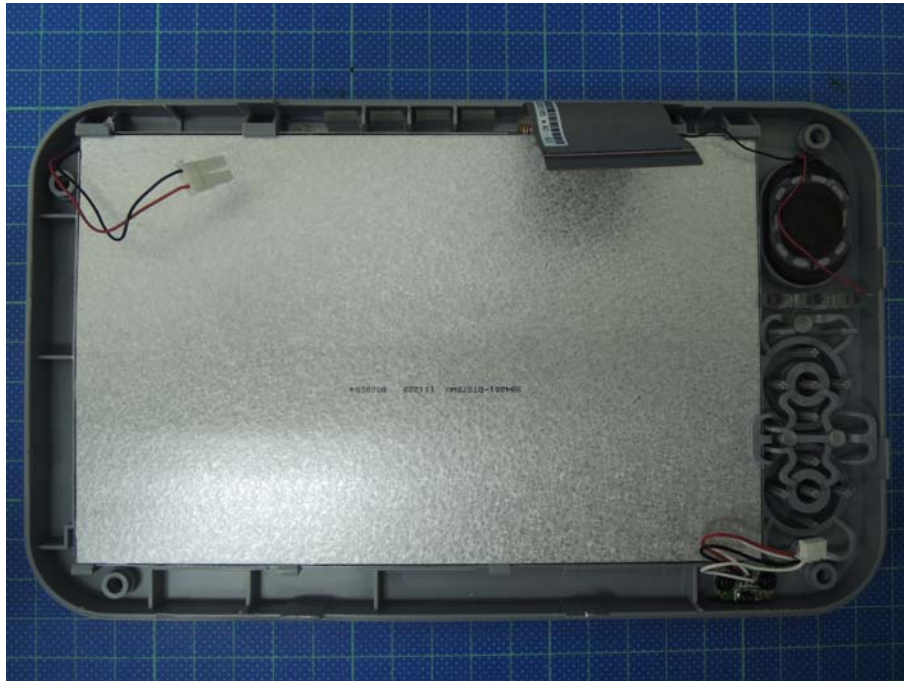
While installing and operating this transmitter, the radio frequency exposure limit of 1 mW/(cm<sup>2</sup>) may be exceeded at distances close to the transmitter. therefore, the user must maintain a minimum distance of 20 cm from the device at all time.

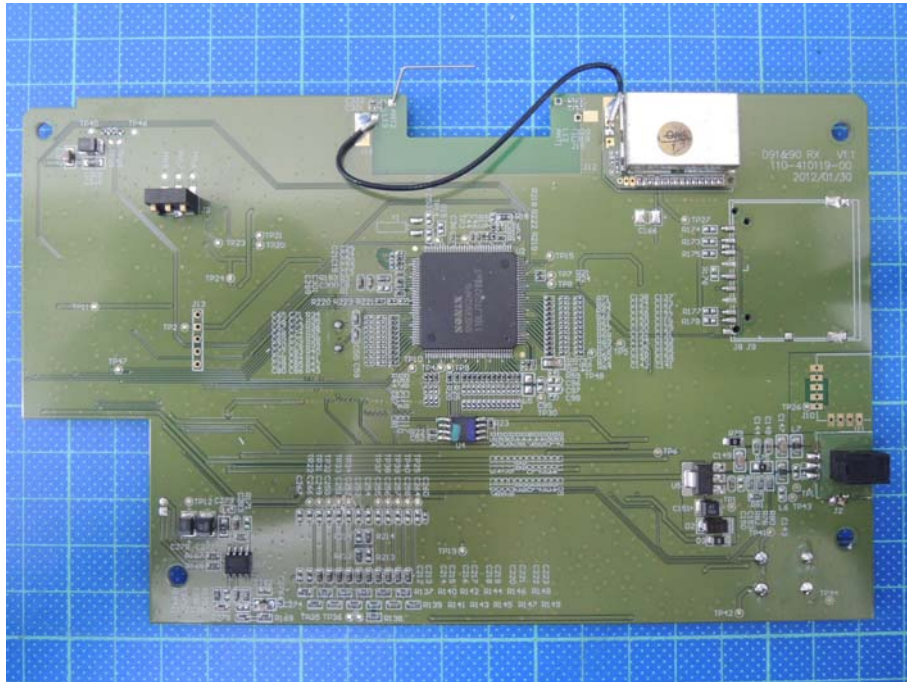
**Appendix A1: External photo of EUT**



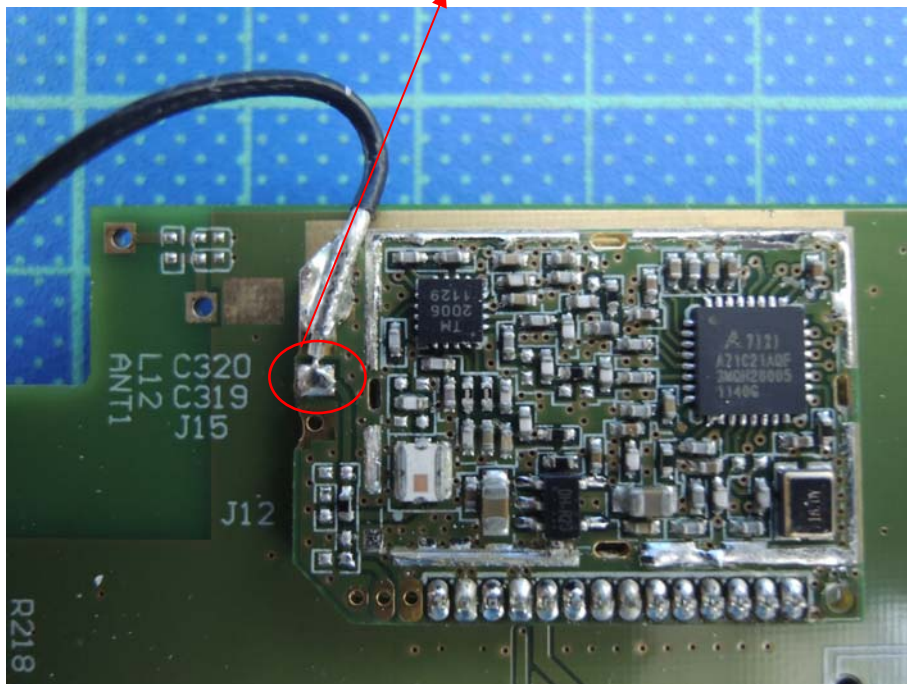


**Appendix A2: Internal photo of EUT**





Measurement point





**Antennt**

