



Test Report

Product Name : Mouse

Model No. : M310, N530

FCC ID. : O62M310

Applicant : Darfon Electronics Corp.

Address : 6, Feng-Shu Tsuen, Gueishan, Taoyuan 333,
Taiwan, R.O.C.

Date of Receipt : Aug. 04, 2004

Issued Date : Aug. 18, 2004

Report No. : 048L058FI

The Test Results relate only to the samples tested.

The test report shall not be reproduced except in full without the written approval of Quietek Corporation.

This report must not be used to claim product endorsement by NVLAP any agency of the U.S. Government

Test Report Certification

Issued Date : Aug. 18, 2004

Report No. : 048L058FI



Accredited by NIST (NVLAP)

NVLAP Lab Code: 200533-0

Product Name : Mouse

Applicant : Darfon Electronics Corp.

Address : 6, Feng-Shu Tsuen, Gueishan, Taoyuan 333, Taiwan, R.O.C.

Manufacturer : Darfon Electronics Corp.

Model No. : M310, N530

FCC ID. : O62M310

Rated Voltage : DC 3V(Power by Battery)

Trade Name : BenQ

Measurement Standard : FCC Part 15 Intentional Radiators for Subpart C
Paragraph 15.227

Measurement Procedure : ANSI C63.4: 2001

Test Result : Complied

The Test Results relate only to the samples tested.

The test report shall not be reproduced except in full without the written approval of Quietek Corporation.

This report must not be used to claim product endorsement by NVLAP any agency of the U.S. Government

Documented By : Rita Huang
(Rita Huang)

Tested By : Tim Sung
(Tim Sung)

Approved By : Gene Chang
(Gene Chang)



TABLE OF CONTENTS

Description	Page
1. GENERAL INFORMATION.....	4
1.1. EUT Description.....	4
1.2. Operation Description	5
1.3. Tested System Details.....	6
1.4. Configuration of tested System	7
1.5. EUT Exercise Software	7
1.6. Test Facility	8
2. Conducted Emission.....	9
2.1. Test Equipment.....	9
2.2. Test Setup	9
2.3. Limits	9
2.4. Test Procedure	10
2.5. Uncertainty	10
2.6. Test Data of Conducted Emission	11
3. Radiated Emission.....	12
3.1. Test Equipment.....	12
3.2. Test Setup	12
3.3. Limits	13
3.4. Test Procedure	14
3.5. Uncertainty	14
3.6. Test Data of Radiated Emission	15
4. Band Edge	17
4.1. Test Equipment.....	17
4.2. Test Setup	17
4.3. Limit	18
4.4. Test Procedure	18
4.5. Test Result of Band Edge	19
5. Occupied Bandwidth.....	21
5.1. Test Equipment.....	21
5.2. Test Setup	21
5.3. Test Result of Occupied Bandwidth	22
6. EMI Reduction Method During Compliance Testing	23
Attachment 1: EUT Test Photographs	
Attachment 2: EUT Detailed Photographs	

1. GENERAL INFORMATION

1.1. EUT Description

Product Name : Mouse
Trade Name : BenQ
FCC ID. : O62M310
Model No. : M310, N530
EUT Voltage : DC 3V(Power by Battery)
Frequency Range : 27MHz
Type of Modulation : FSK
Type of antenna : Loop antenna (Printed)
Channel Number : 1
Channel Control : Manual

Frequency of Each Channel:

Channel	Frequency
Channel 1:	27 MHz

Note:

1. The EUT is a Mouse intends to use in household and office PC system or related application.
2. These tests were conducted on a sample of the equipment for the purpose of demonstrating compliance with Part 15 Subpart C Paragraph 15.227.

Test Mode: Mode 1: Normal Operation

1.2. Operation Description

The EUT is a 27.045MHz Mouse intends to use in household and office PC system.

The device adapts FSK modulation. The antenna Loop antenna Provides diversity function to improve the transmitting function.

The super generation type receiver was used. An external excitation was used when the test of receiver was performed.

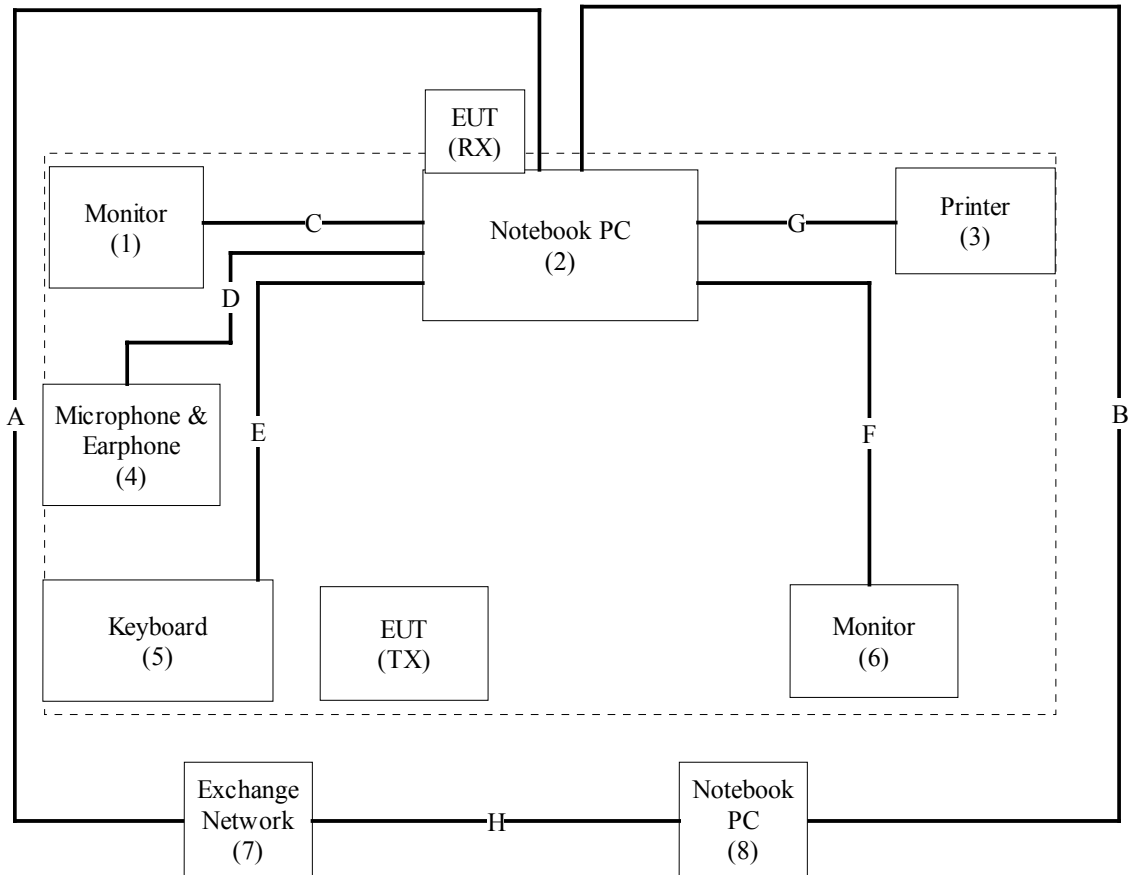
1.3. Tested System Details

The types for all equipment, plus descriptions of all cables used in the tested system (including inserted cards) are:

	Product	Manufacturer	Model No.	Serial No.	FCC ID	Power Cord
(1)	Monitor	ADI	CM703	038054T10203890A	DoC	Non-Shielded, 1.8m
(2)	Notebook PC	DELL	PP01L	N/A	DoC	Non-Shielded, 1.8m
(3)	Printer	EPSON	StyLus C63	FAPY012396	DoC	Non-Shielded, 1.9m
(4)	Microphone & Earphone	N/A	MIC-06	N/A	N/A	N/A
(5)	Keyboard	COMPAQ	KB-0133	B55940EBUO10VI	DoC	N/A
(6)	Monitor	SONY	PVM-14M2U	2105742	DoC	Non-Shielded, 1.8m
(7)	Exchange Network	Sun Moon Star	PX-4	95170087	N/A	Non-Shielded, 1.8m
(8)	Notebook PC	ASUS	S1300	26NP018680	DoC	Non-Shielded, 1.8m

	Signal Cable Type	Signal cable Description
A.	Telecom Cable	Non-Shielded, 7m
B.	LAN Cable	Non-Shielded, 7m
C.	D-Sub Cable	Shielded, 1.8m with one ferrite core.
D.	Microphone & Earphone Cable	Non-Shielded, 1.8m
E.	PS/2 Keyboard Cable	Shielded, 1.8m
F.	S-Video Cable	Shielded, 1.2m
G.	Printer Cable	Shielded, 1.5m
H.	Telecom Cable	Non-Shielded, 7m

1.4. Configuration of tested System



1.5. EUT Exercise Software

- (1) Setup the EUT and simulators as shown on 1.4.
- (2) Enable RF signal and confirm EUT active.
- (3) Modulate output capacity of EUT up to specification.

1.6. Test Facility

Ambient conditions in the laboratory:

Items	Required (IEC 68-1)	Actual
Temperature (°C)	15-35	20-35
Humidity (%RH)	25-75	50-65
Barometric pressure (mbar)	860-1060	950-1000

Site Description:

June 29, 2001 Accreditation on NVLAP
 NVLAP Lab Code: 200533-0
 June 11, 2001 Accreditation on DNV
 Statement No. : 413-99-LAB11
 April 18, 2001 Accreditation on Nemko
 Certificate No.: ELA 191
 Certificate No.: ELA 162
 Certificate No.: ELA 165



Site Name: Quietek Corporation



Site Address: No. 5-22, Ruei-Shu Valley, Ruei-Ping Tsuen,
 Lin Kou Shiang, Taipei 244 Taiwan, R.O.C.
 TEL : 886-2-8601-3788 / FAX : 886-2-8601-3789
 E-Mail : service@quietek.com



2. Conducted Emission

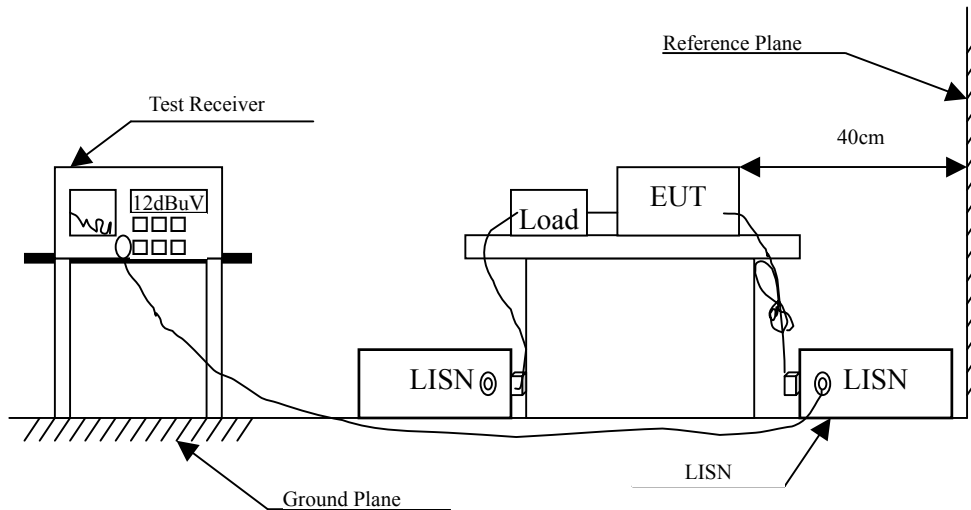
2.1. Test Equipment

The following test equipment are used during the conducted emission test:

Item	Instrument	Manufacturer	Type No./Serial No	Last Cal.	Remark
1	Test Receiver	R & S	ESCS 30/838251/0001	May, 2004	
2	L.I.S.N.	R & S	ESH3-Z5/836679/0023	May, 2004	EUT
3	L.I.S.N.	R & S	ENV 4200/833209/0023	May, 2004	Peripherals
4	Pulse Limiter	R & S	ESH3-Z2	May, 2004	
5	No.4 Shielded Room			N/A	

Note: All equipment upon which need to calibrated are with calibration period of 1 year.

2.2. Test Setup



2.3. Limits

FCC Part 15 Subpart C Paragraph 15.207 (dBuV) Limit		
Frequency MHz	Limits	
	QP	AV
0.15 - 0.50	66-56	56-46
0.50-5.0	56	46
5.0 - 30	60	50

Remarks : In the above table, the tighter limit applies at the band edges.

2.4. Test Procedure

The EUT and simulators are connected to the main power through a line impedance stabilization network (L.I.S.N.). This provides a 50 ohm /50uH coupling impedance for the measuring equipment. The peripheral devices are also connected to the main power through a LISN that provides a 50ohm /50uH coupling impedance with 50ohm termination. (Please refers to the block diagram of the test setup and photographs.)

Both sides of A.C. line are checked for maximum conducted interference. In order to find the maximum emission, the relative positions of equipment and all of the interface cables must be changed according to ANSI C63.4: 2001 on conducted measurement.

Conducted emissions were investigated over the frequency range from 0.15MHz to 30MHz using a receiver bandwidth of 9kHz.

2.5. Uncertainty

The measurement uncertainty is defined as ± 2.02 dB

2.6. Test Data of Conducted Emission

Owing to the DC operation of EUT, this test item is not performed.

3. Radiated Emission

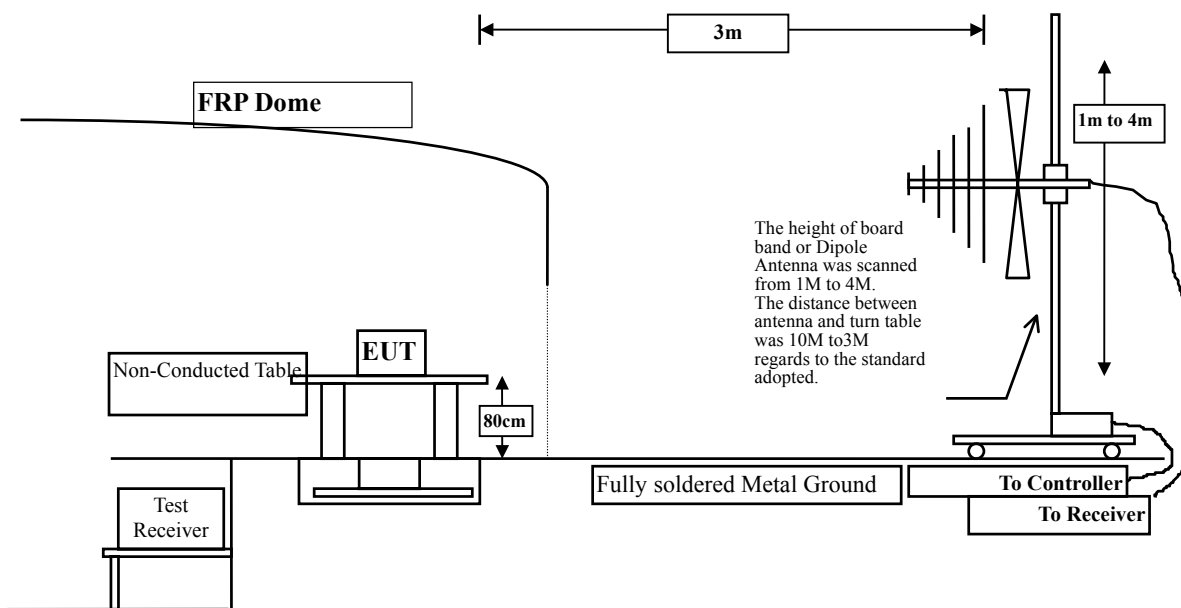
3.1. Test Equipment

The following test equipment are used during the radiated emission test:

Test Site	Equipment	Manufacturer	Model No./Serial No.	Last Cal.
<input type="checkbox"/> Site # 1	Test Receiver	R & S	ESVS 10 / 834468/003	July, 2004
	Spectrum Analyzer	Advantest	R3162/ 00803480	May, 2004
	Pre-Amplifier	Advantest	BB525C/ 3307A01812	May, 2004
	Bilog Antenna	SCHAFFNER	CBL6112B / 2697	Nov., 2003
<input type="checkbox"/> Site # 2	Test Receiver	R & S	ESCS 30 / 836858 / 022	Nov., 2003
	Spectrum Analyzer	Advantest	R3162 / 100803466	May, 2004
	Pre-Amplifier	Advantest	BB525C/3307A01814	May, 2004
	Bilog Antenna	SCHAFFNER	CBL6112B / 2705	Oct., 2003
<input checked="" type="checkbox"/> Site # 3	Test Receiver	R & S	ESI 26 / 838786 / 004	May, 2004
	Spectrum Analyzer	Advantest	R3162 / 100803480	May, 2004
	Pre-Amplifier	QTK	QTK-AMP-03 / 0003	May, 2004
	Bilog Antenna	SCHAFFNER	CBL6112B / 2697	May, 2004
	Horn Antenna	ETS	3115 / 0005-6160	July, 2004
	Pre-Amplifier	QTK	QTK-AMP-01 / 0001	July, 2004
	Broadband Antenna	Schwarz bec	VULB9166/1085	Apr, 2004

- Note: 1. All equipments that need to calibrate are with calibration period of 1 year.
 2. Mark "X" test instruments are used to measure the final test results.

3.2. Test Setup



3.3. Limits

➤ FCC Part 15 Subpart C Paragraph 15.227 Limit

FCC Part 15 Subpart C Paragraph 15.227 Limits		
Fundamental Frequency MHz	Field strength of fundamental	
	uV/m	dBuV/m
26.96-27.28	10000	80.0

Remarks :

1. RF Voltage (dBuV) = 20 log RF Voltage (uV)
2. Distance refers to the distance in meters between the measuring instrument antenna and the closed point of any part of the device or system.
3. The emission limit in this paragraph is based on measurement instrumentation employing an average detector. Measurement using instrumentation with a peak detector function, corresponding to 20dB above the maximum permitted average limit.

➤ Frequencies in restricted band are complied to limits on Paragraph 15.209.

FCC Part 15 Subpart C Paragraph 15.209 Limits		
Frequency MHz	uV/m @3m	dBuV/m@3m
30-88	100	40
88-216	150	43.5
216-960	200	46
Above 960	500	54

- Remarks :
1. RF Voltage (dBuV/m) = 20 log RF Voltage (uV/m)
 2. In the Above Table, the tighter limit applies at the band edges.
 3. Distance refers to the distance in meters between the measuring instrument antenna and the closed point of any part of the device or system.

3.4. Test Procedure

The EUT and its simulators are placed on a turn table which is 0.8 meter above ground. The turn table can rotate 360 degrees to determine the position of the maximum emission level. The EUT was positioned such that the distance from antenna to the EUT was 3 meters.

The antenna can move up and down between 1 meter and 4 meters to find out the maximum emission level.

Both horizontal and vertical polarization of the antenna are set on measurement. In order to find the maximum emission, all of the interface cables must be manipulated according to ANSI C63.4: 2001 on radiated measurement.

Radiated emissions were investigated over the frequency range from 30MHz to 1GHz using a receiver bandwidth of 120kHz. Radiated was performed at an antenna to EUT distance of 3 meters.

The frequency range from 30MHz to 10th harmonics is checked.

3.5. Uncertainty

The measurement uncertainty is defined as ± 3.8 dB

3.6. Test Data of Radiated Emission

Product : Mouse
 Test Item : Fundamental Radiated Emission
 Test Site : No.3 OATS
 Test Voltage : DC 3V(Power by Battery)
 Test Mode : Mode 1: Normal Operation

Freq.	Cable Loss	Probe Factor	PreAMP	Reading Level	Emission Level	Margin	Limit
MHz	dB	dB/m	dB	dBuV	dBuV/m	dB	dBuV/m
Horizontal							
Peak Detector:							
27.044	0.40	3.85	22.53	58.64	40.36	59.64	100.00
Vertical							
Peak Detector:							
27.044	0.40	9.46	22.53	59.55	46.88	53.12	100.00

Note:

1. All Readings are Peak value.
2. Emission Level = Reading Level + Probe Factor + Cable loss – PreAMP.
3. The average measurement was not performed when the peak measured data under the limit of average detection. If the readings given are average, peak measurement should also be supplied.

Product : Mouse
 Test Item : General Radiated Emission
 Test Site : No.3 OATS
 Test Voltage : DC 3V(Power by Battery)
 Test Mode : Mode 1: Normal Operation

Frequency	Cable	Probe	PreAMP	Reading	Emission	Margin	Limit
MHz	Loss	Factor		Level	Level	dB	dBuV/m
	dB	dB/m	dB	dBuV	dBuV/m		

Horizontal:

36.790	0.90	15.24	0.00	6.96	23.10	16.90	40.00
111.480	1.29	12.11	0.00	6.03	19.43	24.07	43.50
263.770	2.07	12.88	0.00	5.03	19.99	26.01	46.00
546.040	3.52	18.02	0.00	8.13	29.67	16.33	46.00
759.440	4.63	19.54	0.00	5.12	29.30	16.70	46.00
* 921.990	5.47	20.29	0.00	5.46	31.22	14.78	46.00

Vertical:

* 84.320	1.15	7.66	0.00	16.25	25.06	14.94	40.00
111.480	1.29	11.12	0.00	12.35	24.76	18.74	43.50
340.400	2.47	12.68	0.00	7.13	22.28	23.72	46.00
495.600	3.27	16.40	0.00	6.62	26.28	19.72	46.00
647.890	4.05	17.97	0.00	7.36	29.38	16.62	46.00
977.690	5.76	19.94	0.00	4.40	30.10	23.90	54.00

Note:

1. All Readings below 1GHz are Quasi-Peak, above are performed with peak and/or average measurements as necessary.
2. “ * ”, means this data is the worst emission level.
3. Emission Level = Reading Level + Probe Factor + Cable Loss.

4. Band Edge

4.1. Test Equipment

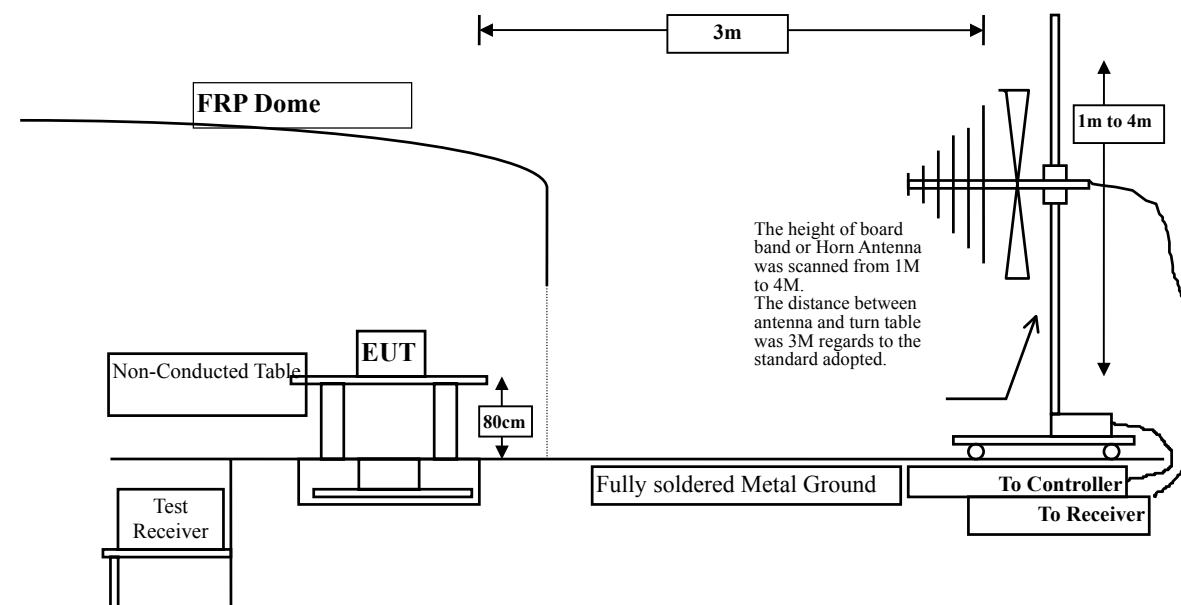
The following test equipment are used during the radiated emission test:

Test Site	Equipment	Manufacturer	Model No./Serial No.	Last Cal.
<input type="checkbox"/> Site # 1	Test Receiver	R & S	ESVS 10 / 834468/003	July, 2004
	Spectrum Analyzer	Advantest	R3162/ 00803480	May, 2004
	Pre-Amplifier	Advantest	BB525C/ 3307A01812	May, 2004
	Bilog Antenna	SCHAFFNER	CBL6112B / 2697	Nov., 2003
<input type="checkbox"/> Site # 2	Test Receiver	R & S	ESCS 30 / 836858 / 022	Nov., 2003
	Spectrum Analyzer	Advantest	R3162 / 100803466	May, 2004
	Pre-Amplifier	Advantest	BB525C/3307A01814	May, 2004
	Bilog Antenna	SCHAFFNER	CBL6112B / 2705	Oct., 2003
<input checked="" type="checkbox"/> Site # 3	Test Receiver	R & S	ESI 26 / 838786 / 004	May, 2004
	Spectrum Analyzer	Advantest	R3162 / 100803480	May, 2004
	Pre-Amplifier	QTK	QTK-AMP-03 / 0003	May, 2004
	Bilog Antenna	SCHAFFNER	CBL6112B / 2697	May, 2004
	Horn Antenna	ETS	3115 / 0005-6160	July, 2004
	Pre-Amplifier	QTK	QTK-AMP-01 / 0001	July, 2004

- Note:
1. All equipments that need to calibrate are with calibration period of 1 year.
 2. Mark "X" test instruments are used to measure the final test results.

4.2. Test Setup

RF Radiated Measurement:



4.3. Limit

Attenuation below the general limits specified in Section 15.209(a) is not required. In addition, radiated emissions which fall in the restricted bands, as defined in Section 15.205(a), must also comply with the radiated emission limits specified in Section 15.209(a) (see Section 15.205(c)).

4.4. Test Procedure

The EUT and its simulators are placed on a turn table which is 0.8 meter above ground. The turn table can rotate 360 degrees to determine the position of the maximum emission level. The EUT was positioned such that the distance from antenna to the EUT was 3 meters.

The antenna can move up and down between 1 meter and 4 meters to find out the maximum emission level.

Both horizontal and vertical polarization of the antenna are set on measurement. In order to find the maximum emission, all of the interface cables must be manipulated according to ANSI C63.4: 2001 on radiated measurement.

The additional latch filter below 1GHz was used to measure the level of harmonics radiated emission during field strength of harmonics measurement.

The bandwidth below 30MHz setting on the field strength meter is 10 kHz

4.5. Test Result of Band Edge

Product : Mouse
 Test Item : Band Edge
 Test Site : No.3 OATS
 Test Mode : Mode 1: Normal Operation

RF Radiated Measurement: (Q-Peak Detector)

Channel No.	Frequency (MHz)	Reading Level (dBUV)	Probe Factor (dB/m)	Cable Loss (dB)	PreAMP (dB)	Emission Level (dBUV/m)	Limit (dBUV/m)	Result
1 (Horizontal)	26.050	30.64	3.69	0.40	22.73	12.00	49.50	Pass
1 (Vertical)	26.730	30.12	9.46	0.40	22.53	17.45	49.50	Pass

Figure Channel 2: (Horizontal)

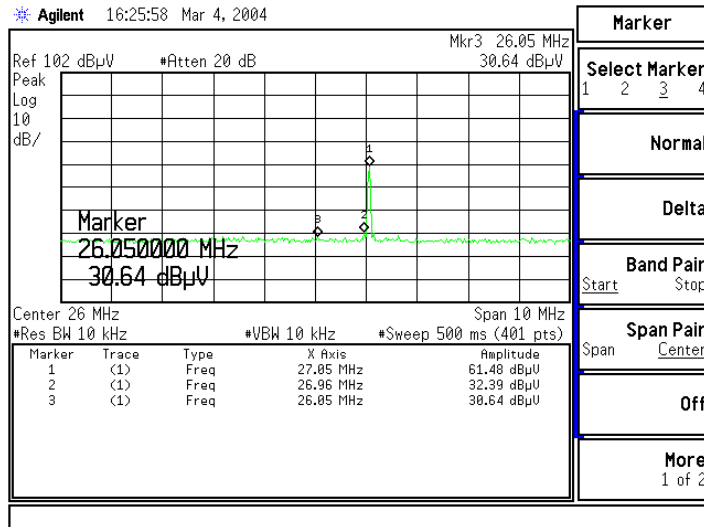
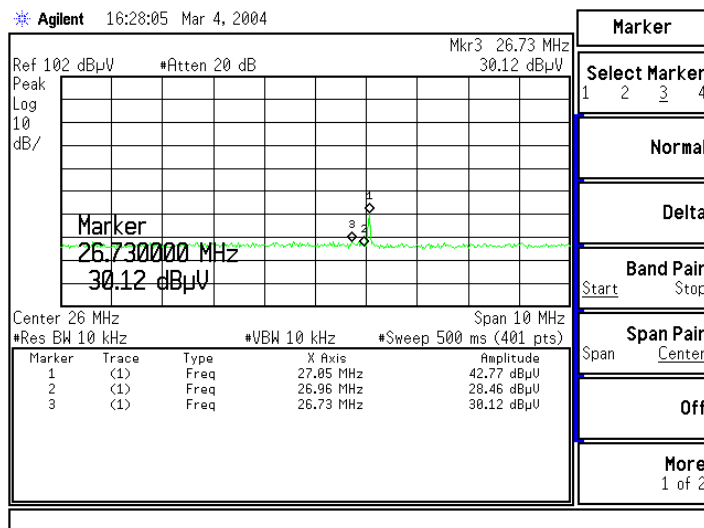


Figure Channel 2: (Vertical)



Note:

- The average measurement was not performed when the peak measured data under the limit of average detection. If the readings given are average, peak measurement should also be supplied.

Product : Mouse
 Test Item : Band Edge Data
 Test Site : No.3 OATS
 Test Mode : Channel 1

RF Radiated Measurement: (Q-Peak Detector)

Channel No.	Frequency (MHz)	Reading Level (dBuV)	Probe Factor (dB/m)	Cable Loss (dB)	PreAMP (dB)	Emission Level (dBuV/m)	Limit (dBuV/m)	Result
1 (Horizontal)	27.630	31.00	4.58	0.40	22.53	13.45	49.50	Pass
1 (Vertical)	27.700	29.34	9.99	0.40	9.99	17.21	49.50	Pass

Figure Channel 2: (Horizontal)

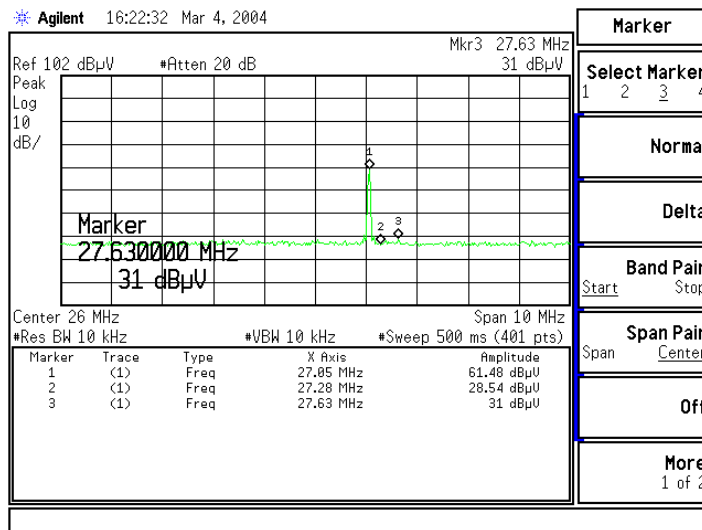
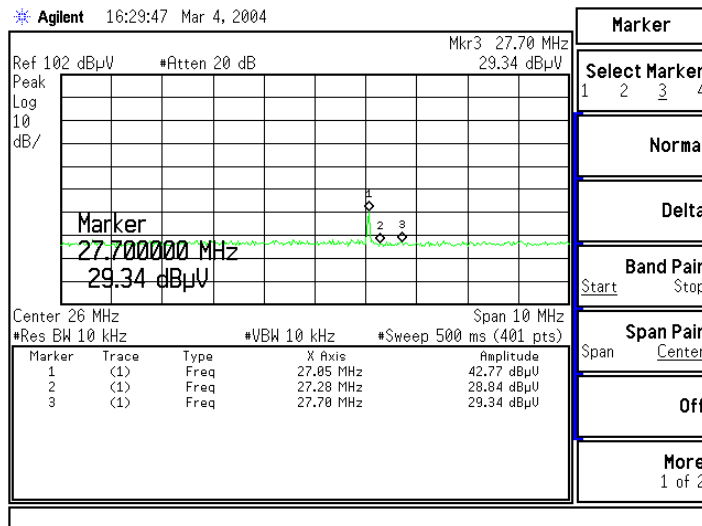


Figure Channel 2: (Vertical)



Note:

- The average measurement was not performed when the peak measured data under the limit of average detection. If the readings given are average, peak measurement should also be supplied.

5. Occupied Bandwidth

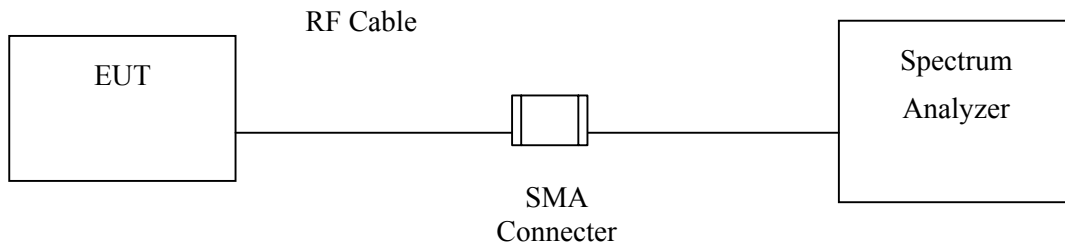
5.1. Test Equipment

The following test equipments are used during the radiated emission tests:

	Equipment	Manufacturer	Model No./Serial No.	Last Cal.
X	Spectrum Analyzer	HP	E4407B	May, 2004

Note: 1. All equipment upon which need to calibrated are with calibration period of 1 year.
 2. Mark "X" test instruments are used to measure the final test results.

5.2. Test Setup



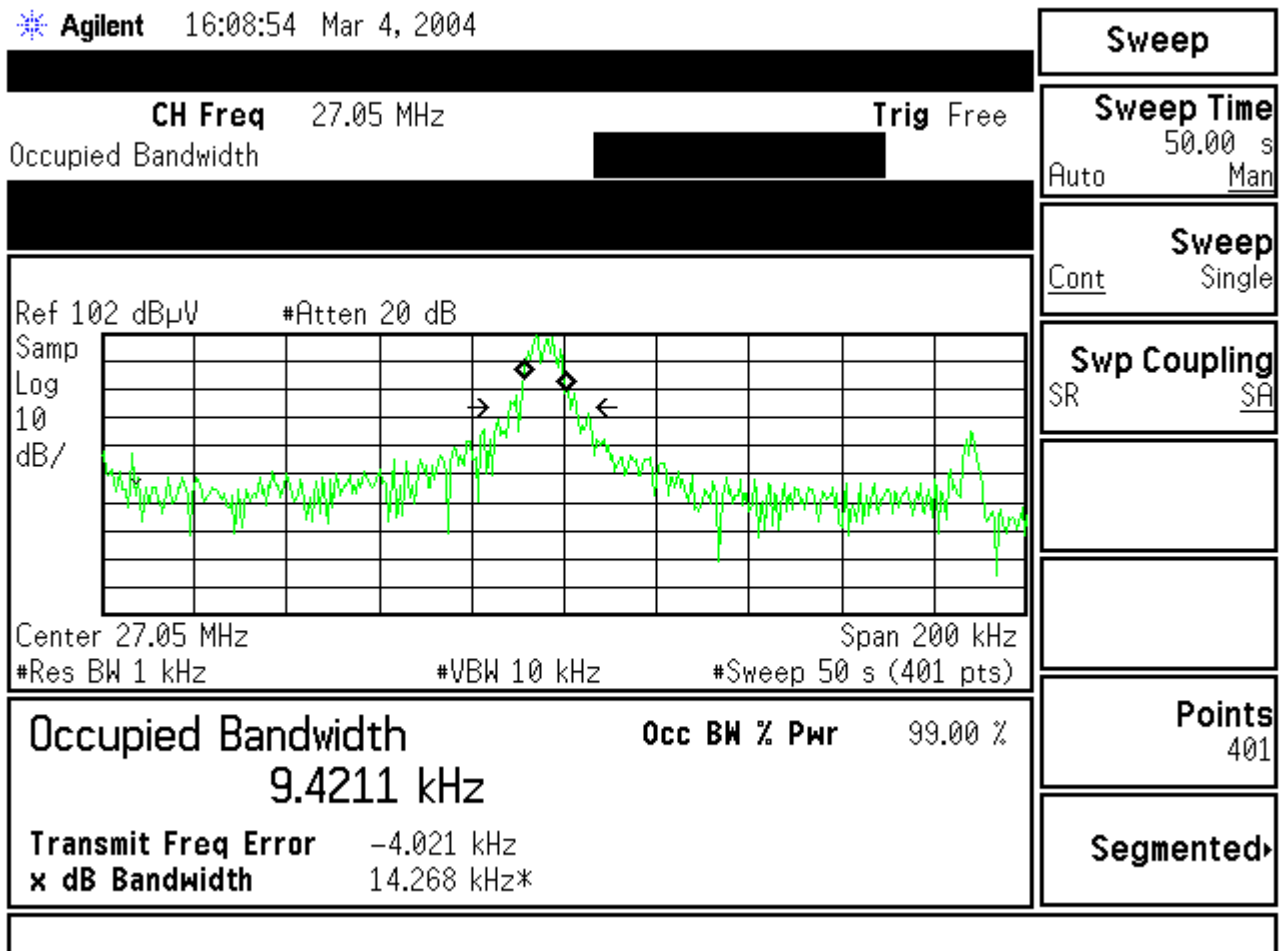
5.3. Test Result of Occupied Bandwidth

Product : Mouse
 Test Item : Occupied Bandwidth Data
 Test Site : No.1 OATS
 Test Mode : Channel 1

Channel No.	Frequency (MHz)	Measurement Level (kHz)	Required Limit (kHz)	Result
Ch01	27.05	9.4211	10	Pass

Figure Channel 1: 54Mbps

Agilent 16:08:54 Mar 4, 2004



6. EMI Reduction Method During Compliance Testing

No modification was made during testing.

Attachment 1: EUT Test Photographs

Attachment 1: EUT Test Setup Photographs

Front View of Radiated Test



Back View of Radiated Test



Attachment 2: EUT Detailed Photographs

Attachment 2 : EUT Detailed Photographs

(1) EUT Photo



(2) EUT Photo



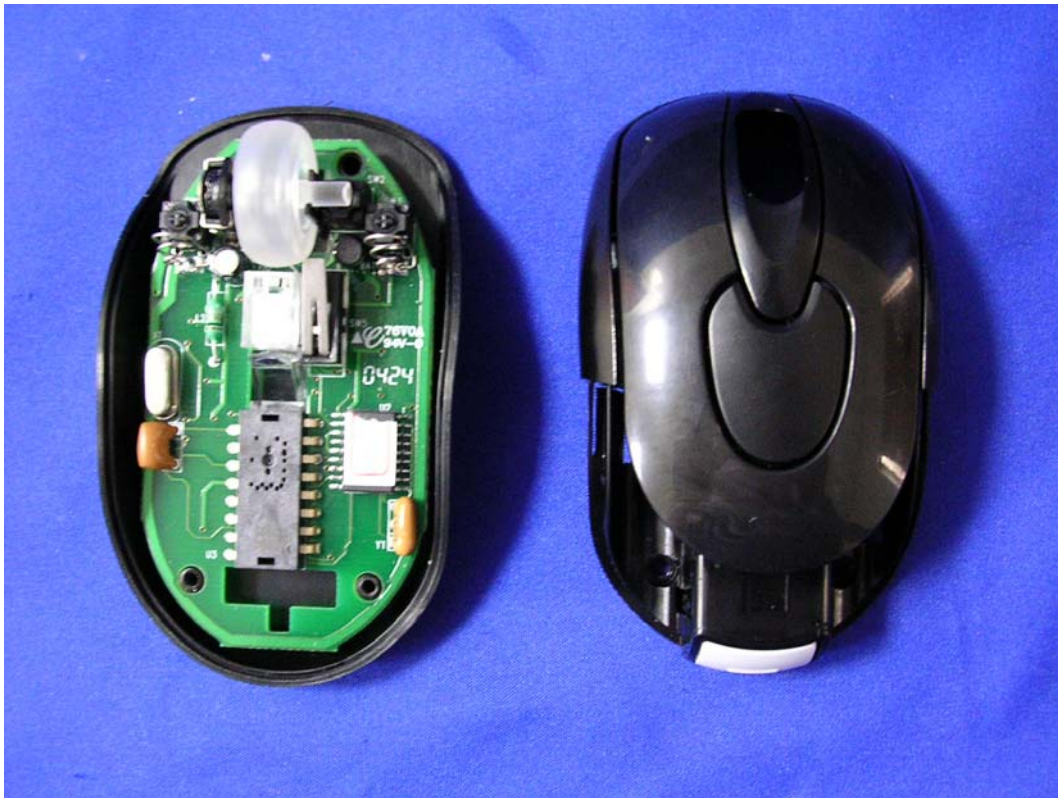
(3) EUT Photo



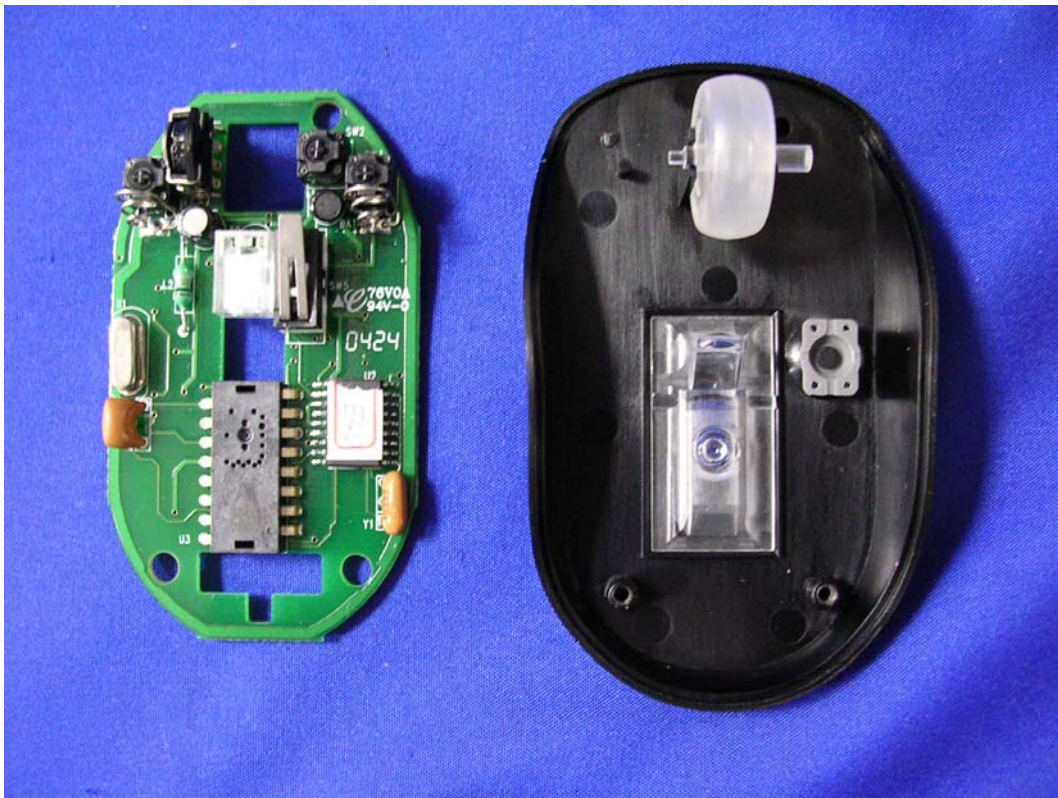
(4) EUT Photo



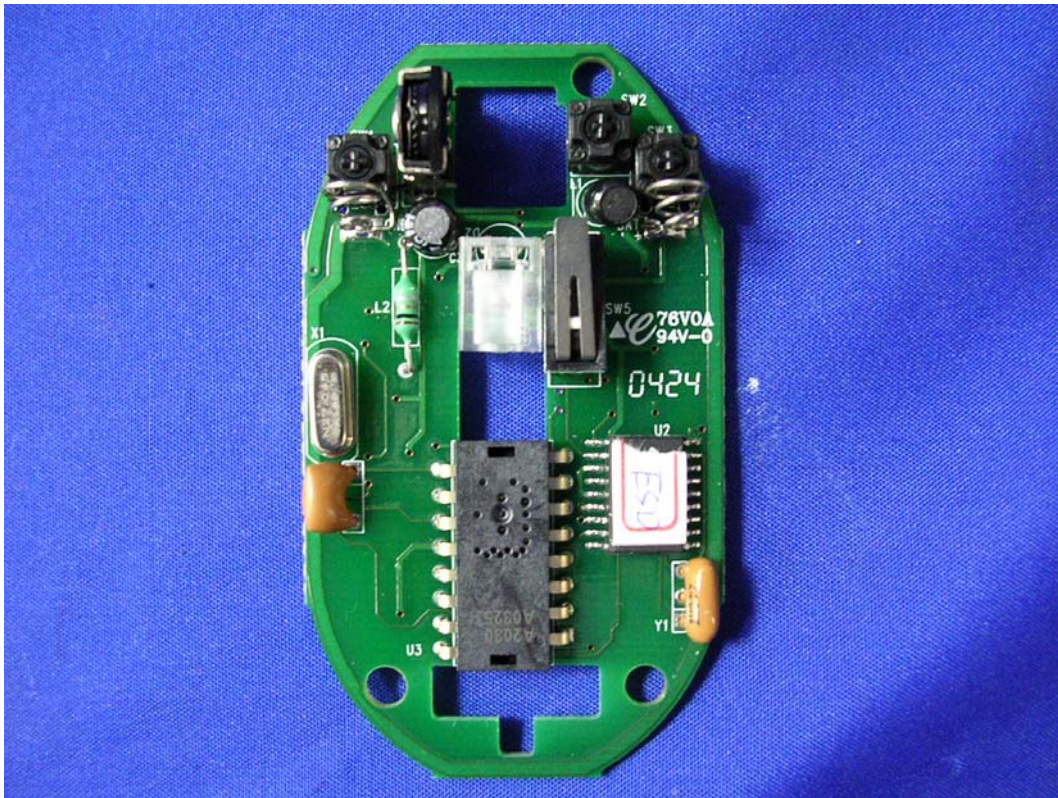
(5) EUT Photo



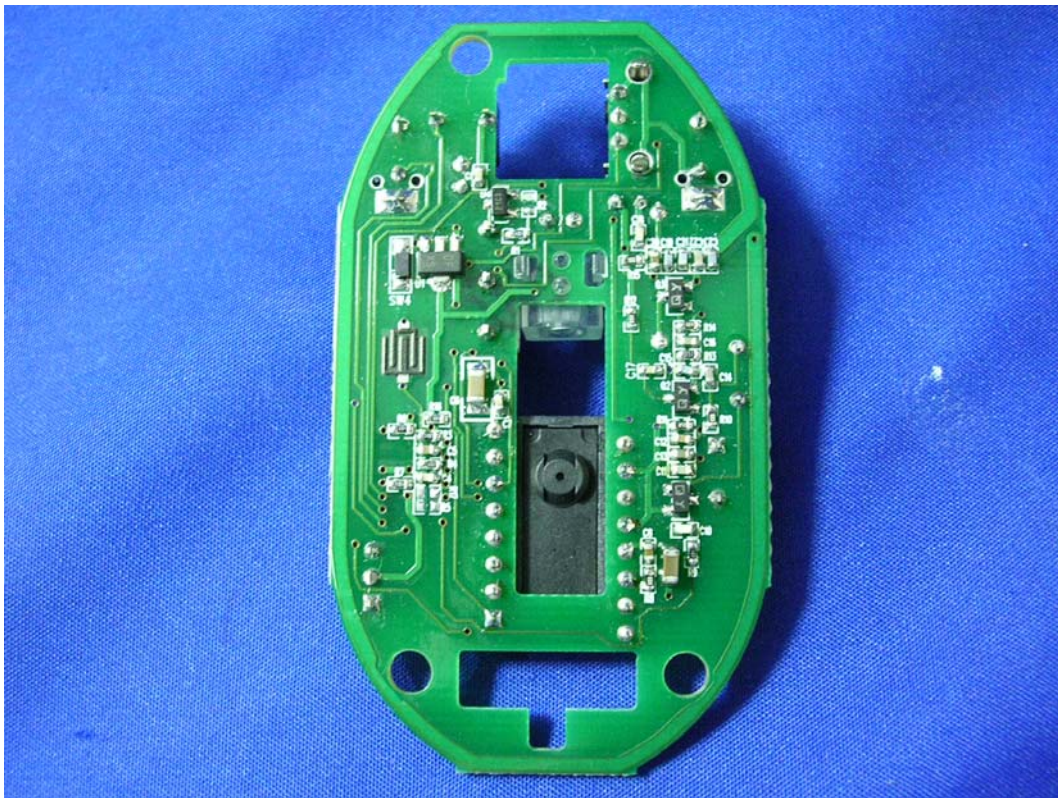
(6) EUT Photo



(7) EUT Photo



(8) EUT Photo



(9) EUT Photo



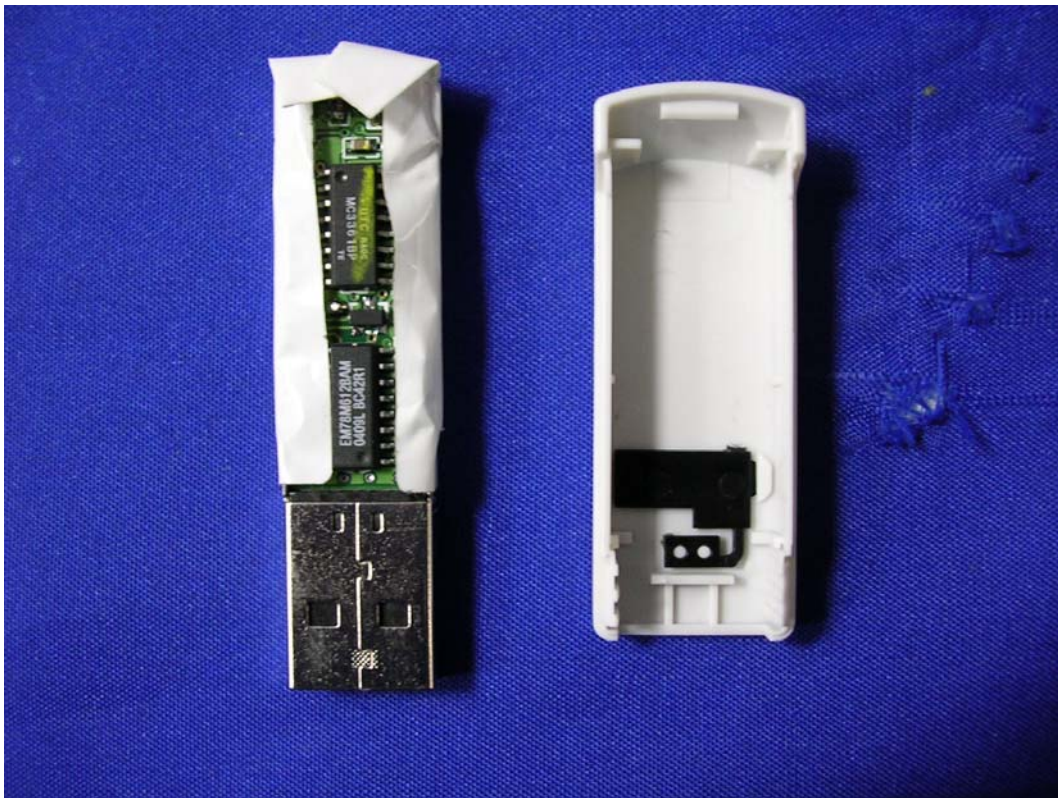
(10) EUT Photo



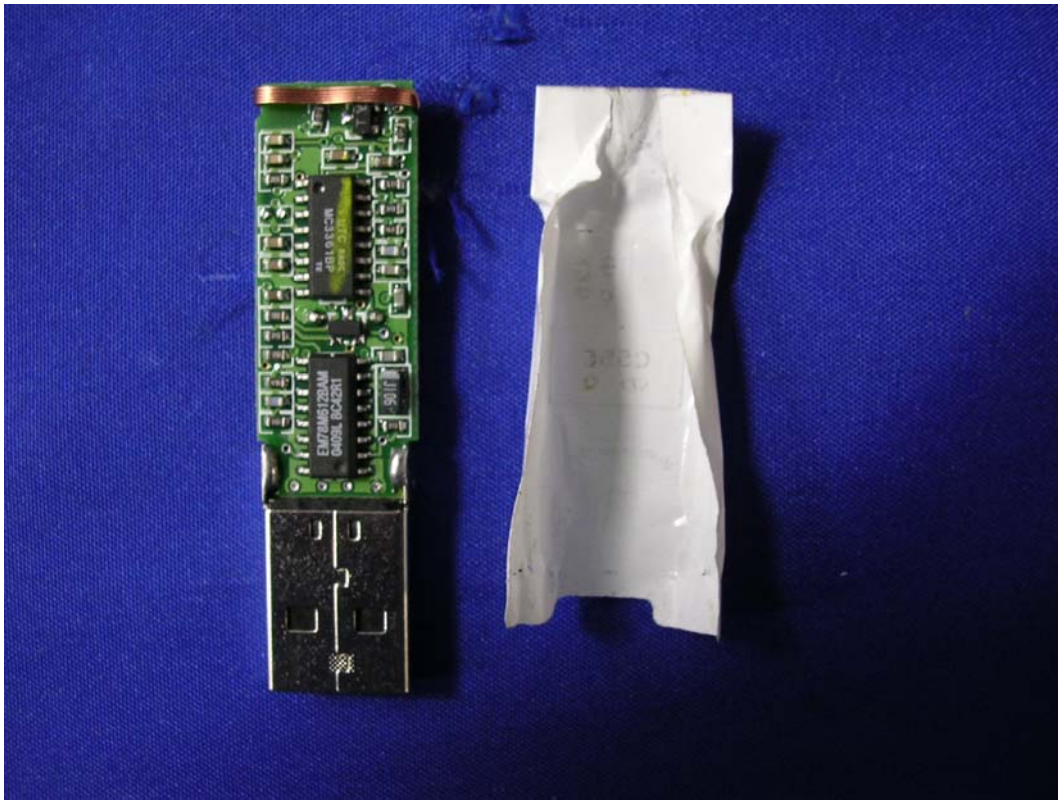
(11) EUT Photo



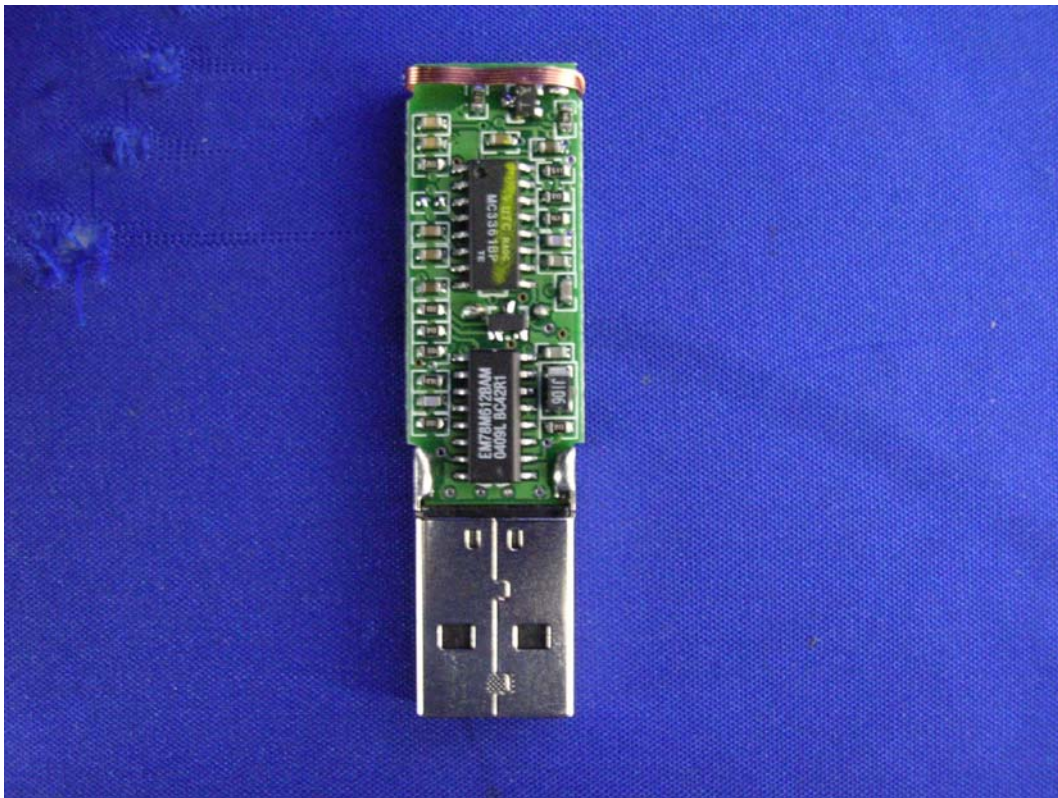
(12) EUT Photo



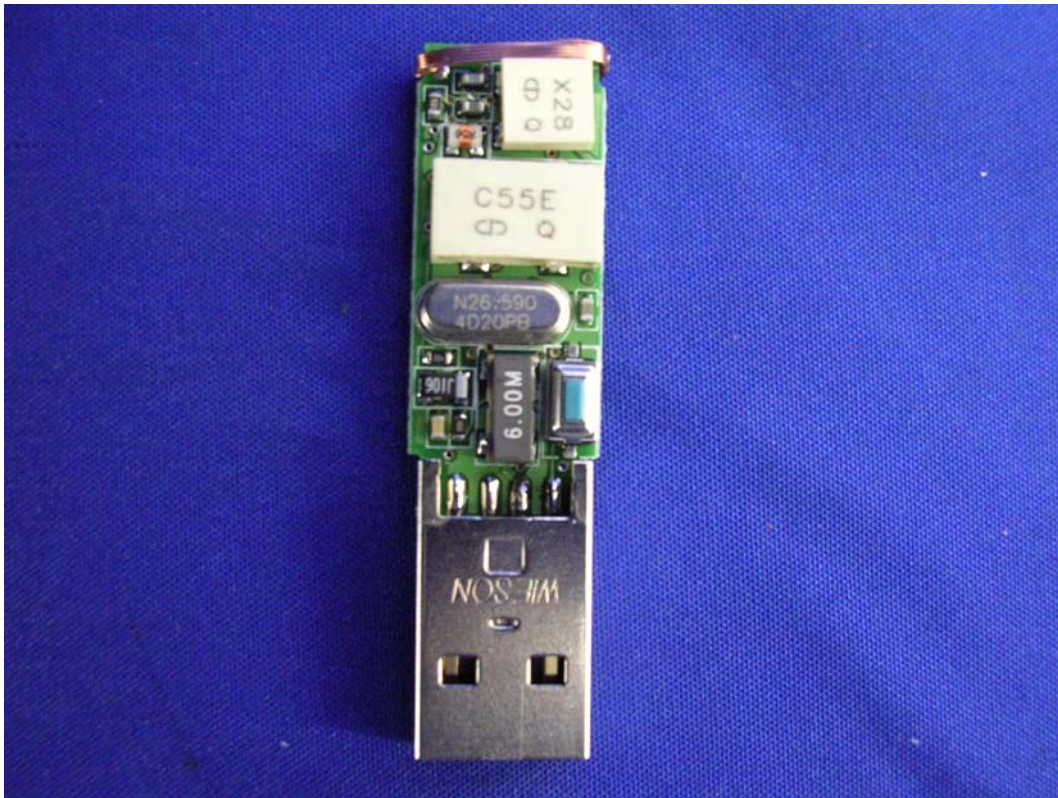
(13) EUT Photo



(14) EUT Photo



(15) EUT Photo



(16) EUT Photo

