

# BenQ M306 Wireless Optical Mouse

## Quick Setup Guide

### FCC Statement

FCC Warning!

This equipment has been tested and found to comply with the limits for a Class B digital device, pursuant to part 15 of the FCC Rules. These limits are designed to provide reasonable protection against harmful interference in a residential installation. This equipment generates uses and can radiate radio frequency energy and, if not installed and used in accordance with the instructions, may cause harmful interference to radio communications. However, there is no guarantee that interference will not occur in a particular installation. If this equipment does cause harmful interference to radio or television reception, which can be determined by turning the equipment off and on, the user is encouraged to try to correct the interference by on or more of the following measures:

- Reorient or relocate the receiving antenna.
- Increase the separation between the equipment and receiver.
- Connect the equipment into an outlet on a circuit different from that to which the receiver is connected.
- Consult the dealer or an experienced radio/TV technician for help.

This device complies with Part 15 of the FCC Rules.

Operation is subject to the following two conditions:

- (1) this device may not cause harmful interference and
- (2) this device must accept any interference received, including interference that may cause undesired operation.

This equipment complies with FCC RF radiation exposure limits set forth for an uncontrolled environment. This equipment should be installed and operated with a minimum distance of 20cm between the radiator and your body.

## 2.Package Contents

BenQ wireless optical mouse

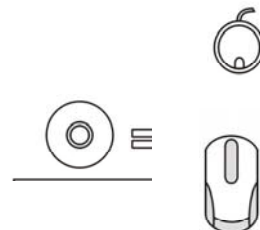
BenQ receiver

USB to PS/2 mouse adaptor

2 AA alkaline batteries

CD Software with Q-Type Pro driver

Quick Setup Guide

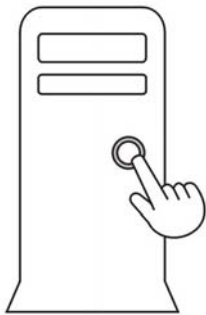


### 3. System Requirements:

- IBM® compatible system.
- Microsoft Windows® 98, 2000, Me, XP.
- Available USB port or PS/2 mouse port.
- CD-ROM or DVD-ROM drive.
- At least 32MB of RAM and 20MB of available hard-drive space.

### 4. Hardware Installation

- **Turn off your computer**

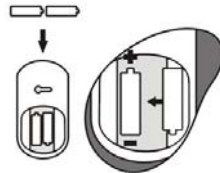


**OFF**

- **Load Batteries**

Step 1. Load the AA batteries (included) in the wireless optical mouse.

Step 2. Follow the polarity indicators to load the batteries.



- **Connecting the receiver**

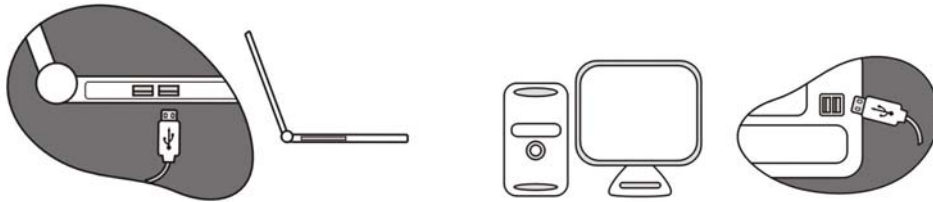
**For USB Interface (If no PS/2 Port)**

Step 1. Connect the USB connector on receiver cable to your computer or to the Hub connected to your computer.

Step 2. Restart the computer.

Step 3. System will automatically detect for new hardware.

Step 4. Follow system's setup instruction.

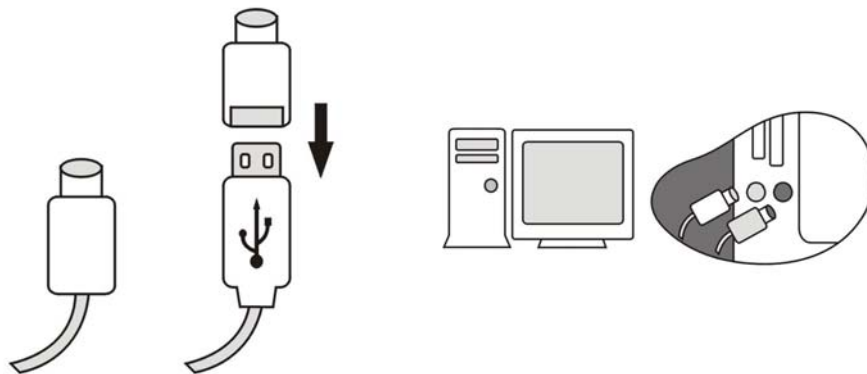


### For PS/2 (If no USB port)

Step 1. Plug the green PS/2 adapter into PS/2 Mouse port on computer

Step 2. Plug the purple PS/2 connector into PS/2 keyboard port on computer.

Step 3. Restart your computer.



### - Synchronizing the receiver with wireless keyboard and mouse

Step 1. Press the connect button on top of the receiver (The LED on receiver will start to blink once the button is pressed.), then use a pointy object (e.g. the ink point of a pen) to press the connect button on the bottom side of the mouse within 10 seconds.

Step 3. If the mouse does not connect, please repeat the steps above.



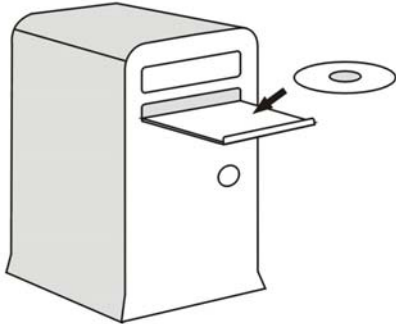
– **Software Installation (for hotkey functions)**

Step 1. Insert driver CD into CD-ROM or DVD drive.



Step 2. The installation program should run automatically. If not, double click “setup.exe”

Step 3. The onscreen setup will guide you through rest of the installation process.

Step 4. After the software installation is completed, you will be prompted to restart your computer.



## Mouse Hotkeys

Function	Description
	Switches applications.
	Closes a document or file of the active program.

## 7. Trouble Shooting

### When mouse does not work:

- Please make sure the receiver’s connectors are plugged correctly into your computer. Before you plug the PS/2 connector on receiver cable into PS/2 port, please do make

sure your PC is Power Off.

- Please make sure the batteries are loaded correctly in the mouse.
- Please check battery life
- Please press the connect button on top of the receiver, then use a sharp point (e.g. the point head of your pen) object to press the connect button on the bottom of the mouse within 10 seconds.
- Reload batteries and repeat wireless connect again.
- When you find your mouse are experiencing interferences by other wireless input devices, please reset the mouse again and place the receiver at least 8 inches (20 cm) away from any electronic devices (ex. computer, monitor, etc.) to avoid interference.
- Do not place receiver on metal surface.
- After installing the driver, Num/Caps/Scroll Lock function indicators will be showed on the screen.
- The mouse uses a fast and sensitive 800 DPI optical sensor. It moves faster than normal optical mouse. You can change the moving speed from the mouse setting control inside the control panel.

## 9.Warranty

### Warranty:

- One year parts/labor from purchase date
- BenQ America Corp. ("BenQ") warrants BenQ keyboard with accompanying mouse cables and adapters (collectively "keyboard") you have purchased from BenQ or from a BenQ authorized reseller/retailer to be free from defects in materials or workmanship under normal use during the warranty period. Please visit [http://www.benq.com/warranty/index.html#benq\\_warranty](http://www.benq.com/warranty/index.html#benq_warranty) for more details.

### Registration:

- Please go to <http://www.benq.com/warranty/warrantyreg.cfm> to register your product.

## Contact Information

For warranty & technical support, please call 1-866-600-2367 or visit us at

<http://www.benq.com>



Hours: M-F 6:00am - 6:00pm PST

For further product information or rebate questions, please call 1-866-700-2367.



Hours: M-F 8:30am - 5:30pm PST

You may also **request information** by mailing to the following address:

BenQ America Corp.

Customer Service Dept.

P.O.Box 1757

Walnut, CA 91788-1757