

Important Health Information

Certain repetitive strain injuries, including pain, numbness and weakness to hands, wrists, arms, neck and/or back have been identified by some experts as being associated with the prolonged use of keyboards. If you are experiencing injury symptoms, consult a medical professional. A person's susceptibility to these injuries may be affected by many factors, including body posture, repetitive physical activities and general physical health. For more information, please visit <http://www.BenQ.com/keyboard/comfort>.

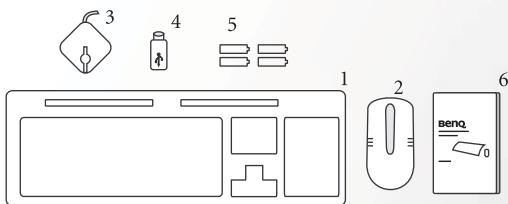
FCC Statement

This device complies with part 15 of the FCC Rules. Operation is subject to the following two conditions:

1. This device may not cause harmful interference, and
2. This device must accept any interference received, including interference that may cause undesired operation.

Package Contents

1. BenQ x530 wireless keyboard
2. BenQ x530 wireless optical mouse
3. Receiver
4. USB to PS/2 keyboard adaptor
5. Four AA alkaline batteries
6. User's Guide



System Requirements:

- IBM® or compatible PC system with Microsoft Windows® 98, 2000, Me, XP
- One available USB port or PS/2 keyboard & mouse port

To use Internet & Email hot keys, the system requires:

- Internet access.
- Microsoft® Internet Explorer 4.0 or higher, or Netscape® Navigator 4.0 or higher.

To use Media Console functions, the system requires:

- A sound card and speakers.

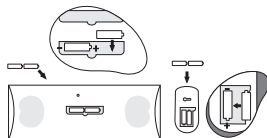
Welcome

Congratulations on your purchase of the BenQ x530 wireless keyboard and mouse. Simply follow the instructions in this guide, and in a few minutes you'll be enjoying the freedom of wireless technology and the eye-pleasing efficiency of a clutter-free desktop.

1. Insert the Batteries

- Step 1 : Turn both the mouse and the keyboard upside down.
 Step 2 : Carefully remove the battery compartment covers.
 Step 3 : Insert new batteries, making sure to properly orient the positive (+) and negative (-) ends as specified by the battery compartment labels.
 Step 4 : Gently slide the battery compartment covers back into place.

*After replacing batteries, please refer to SECTION 3 "ESTABLISH A WIRELES CONNECTION" to reestablish the connection.



2. Hardware Installation

The receiver gives the keyboard and mouse the ability to communicate with your computer. Depending upon your computer and operating system, there are two ways that you can connect the receiver.

PS/2 Connection

Windows 98, 2000 , Me, XP for Desktop Computer

NOTE: If you are connecting the receiver to a notebook computer, you should use the USB connection rather than the PS/2 connection.

- Step 1 : Shut down Windows OS and turn off the computer.
 Step 2 : Plug the PS/2 (GREEN) connector into the computer's round PS/2 mouse port. On most computers, this port will be similarly colored and labeled with a mouse icon. Make sure that the connector is properly aligned, then gently press it in.
 Step 3 : Attached the USB-to-PS/2 (PURPLE) adapter to the receiver's rectangular USB connector, and then plug it into the computer's round PS/2 keyboard port. On most computers, this port will be similarly colored and labeled with a keyboard icon.



- Step 4 : Turn on the computer.
 Step 5 : **PROCEED TO SECTION 3 "ESTABLISH A WIRELESS CONNECTION" TO COMPLETE THE INSTALLATION.**

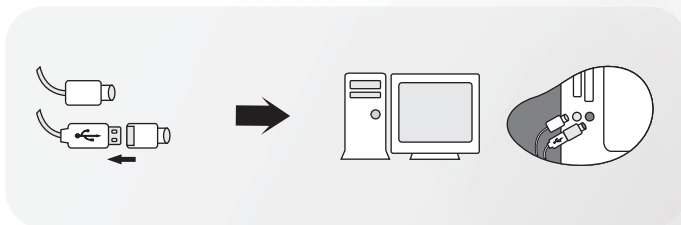
USB Connection**Windows 2000, Me, XP for Desktop Computers**

- Step 1 : Plug the USB connector of the receiver into the USB port of your system.
- Step 2 : Within one minute, system will automatically detect for new hardware.
- Step 3 : **PROCEED TO SECTION 3 "ESTABLISH A WIRELESS CONNECTION" TO COMPLETE THE INSTALLATION.**

Windows 98 for Desktop Computer

NOTE: Even though you will eventually connect the receiver through the USB port, for proper driver installation you must first connect it using the PS/2 connectors.

- Step 1 : Shut down Windows OS and turn off the computer.
- Step 2 : Plug the PS/2 (GREEN) connector into the computer's round PS/2 mouse port. On most computers, this port will be similarly colored and labeled with a mouse icon. Make certain that the connector is properly aligned, then gently press it in
- Step 3 : Attached the USB-to-PS/2 (PURPLE) adapter to the receiver's rectangular USB connector, and then plug it into the computer's round PS/2 keyboard port. On most computers, this port will be similarly colored and labeled with a keyboard icon.

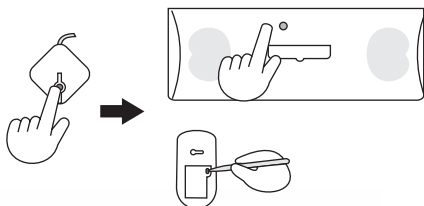


- Step 4 : Turn on the computer.
- Step 5 : **SKIP TO SECTION 3 "ESTABLISH A WIRELESS CONNECTION."**
- Step 6 : Turn off the computer.
- Step 7 : Unplug both PS/2 keyboard (PURPLE) and mouse (GREEN) connector from your PC.
- Step 8 : Remove the USB-to-PS/2 (PURPLE) adapter from the USB connector.
- Step 9 : Plug the rectangular USB connector into your computer's rectangular USB port. **PLEASE LEAVE THE PS/2 CONNECTOR UNPLUGGED.**
- Step 10 : Turn on your computer. INSTALLATION IS NOW COMPLETE.



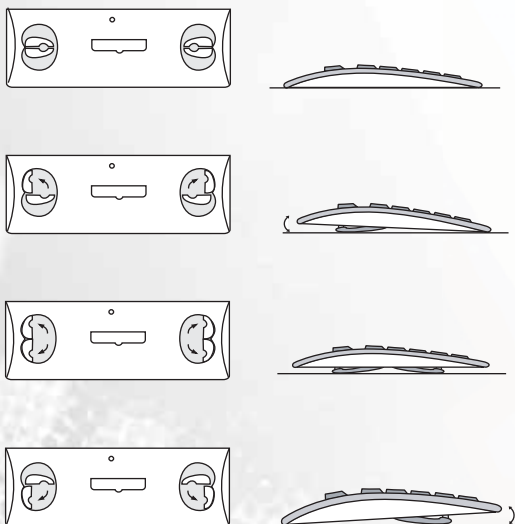
3. Establish a Wireless Connection

- Step 1 : Make sure that the receiver is at least 8 inches (20 cm) away from electronic devices (such as monitors or speakers), and that the keyboard and mouse are no more than 7 feet (213 cm) away. Please note that the receiver may not function properly if placed on a metal surface.
- Step 2 : Press the connect button on top of the receiver. The LED on the receiver will start to blink.
- Step 3 : **First press the connect button on the receiver, and then the connect button on the bottom of the keyboard or the mouse within 10 seconds of each other.**
- Step 4 : If the keyboard or mouse does not connect, please repeat the above steps.









4. Adjusting the Keyboard

Adjusting the keyboard stand for more comfortable typing positions, there are 4 ways to adjust the angle or height of your keyboard. Please "PUSH" the keyboard legs up or down. DO NOT "PULL" the keyboard stands.










5. Keyboard Hot Keys Definition

Internet Hot Keys Function

Function	Description
	E-mail : Launch the default email program.
	Web/Home : Launch the home page for the default web browser.
	Favorites : Open "My Favorites" folder.
	Search : Launch the file search or web search.
	Back : Send Web Browser back to the "Previous Page."
	Reload : Retrieve the current page and re-display it.

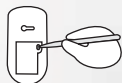
Media Console Hot Keys Function

Function	Description
	Mute
	Previous Track
	Stop
	Play/Pause
	Next Track
	Volume Down
	Volume Up

Description

6. Power-saving Mode for Mouse

To power off the mouse, please press the "connect button" at least for three seconds. To turn the power on, please press the button again.



7. Trouble Shooting

My keyboard and/or mouse does not work:

One of the following remedies should solve your problem.

- Verify that the receiver is properly connected to your computer.
Please refer to Section 2 (Hardware Installation) of the User's Guide.
- Make sure the batteries are inserted correctly in both the keyboard and mouse.
Please refer to Section 1 (Insert the Batteries) of the User's Guide.
- If you suspect that the batteries may be exhausted, replace batteries with new batteries.
- Re-establish your wireless connection. Please refer to Section 3 (Establish a Wireless Connection) of the User's Guide.
- Reload batteries and re-establish wireless connection.
- If you suspect that your keyboard and mouse are experiencing interference from other wireless devices, you can change the wireless channel by repeating Section 3 (Establish a Wireless Connection) of the User's Guide.
- For optimum performance, position the receiver at least 8 inches (20 cm) away from any electronic devices (ex. computer, monitor) to avoid interference.
- The keyboard or mouse may work up to 7 feet (213 cm) away from the receiver. This distance varies depending on the positioning of the receiver and wireless devices, interference from electrical and other wireless devices, and other factors.
- Please make sure the receiver is not on a metal surface.

I have setup a BIOS password on my computer and cannot use the keyboard to type in my password.

- This usually occurs when the USB port support under BIOS setup is disabled. Please use PS/2 connection under section 2 (*Hardware Installation*) of the User's Guide to access your BIOS setup. (Please consult the documentation that came with your computer or contact your computer manufacturer for more information on accessing BIOS setup. *) Once USB port support under BIOS is enabled, you can disconnect your PS/2 keyboard & mouse connection and follow the USB connection instruction under Section2 (*Hardware Installation*) of the User's Guide.

* Not all BIOS support USB port under BIOS setup or password prompt.
Please consult the documentation that came with your computer or contact the computer manufacturer for more details.

8. Limited Warranty

- One year parts/labor from purchase date
- BenQ America Corp. ("BenQ") warrants BenQ keyboard with accompanying mouse cables and adapters (collectively "keyboard") you have purchased from BenQ or from a BenQ authorized reseller/retailer to be free from defects in materials or workmanship under normal use during the warranty period. Please visit: http://www.benq.com/warranty/index.html#benq_warranty for more details.

9. Contact Information

- **Warranty & technical support**

Phone: 1-866-600-2367, Hours: Mon-Fri, 6:00am - 6:00pm PST

Website: <http://www.benq.com>

- **Further product information or rebate questions**

Phone: 1-866-700-2367, Hours: Mon-Fri, 8:30am - 5:30pm PST

Mail: BenQ America Corp.

Customer Service Dept.

P.O.Box 53748

Irvine, CA 92619-37480