

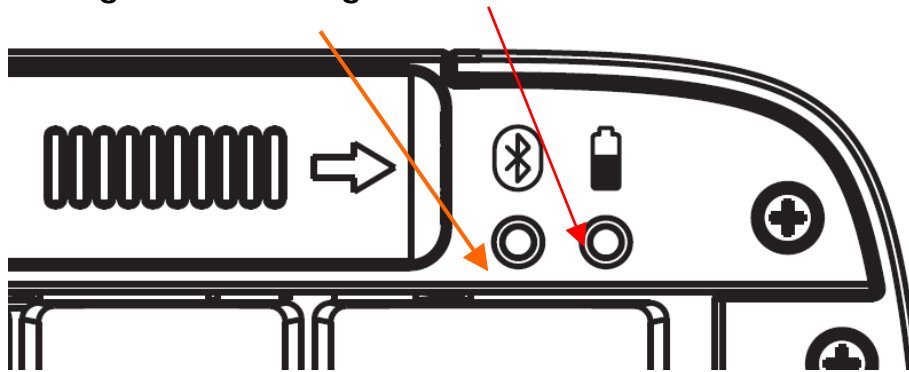
A. Introduction

Congratulations on your purchase of the Innovative Bluetooth Keyboard. Now, if you replace your Bluetooth handheld, you won't have to replace your keyboard. Using Bluetooth HID Profile technology to communicate with your handheld, this innovation lets you input data to your device without physically attaching it to the Keyboard. Connection distance is up to 7M. It works with most popular Bluetooth handhelds. Hope it can bring you convenience of typing.

B. Introduction of LED and Button

LED position: Upper right corner on the keyboard.

LED light color: Orange and Red



LED function:

Orange→ To indicate the Bluetooth connection status, detail please refer to following,

Red→ To indicate the low battery

Orange LED has two status: Slow flashing and OFF

(a) Slow flashing: Keyboard is in discoverable mode which means the user can inquiry and connects to the keyboard from device side.

(b) OFF: It means the keyboard is in either connected or sleep mode. In discoverable mode, keyboard will go into sleep mode after 60 seconds.

When in connected state, the LED is also off.

Red LED has only one status: Slow flashing

When the battery capacity is low, the red LED flashes, two times per one second.

Connect button has 2 functions.

(a) Wake up the keyboard.

(b) Disconnect the link. When in connected state, user can press connect button to cancel the link. However we recommend the user disconnect the link from the device side.

C. Re-charging Function

This keyboard attaches the re-charging function. While user uses the rechargeable batteries in the keyboard, user can charge the batteries via mini USB cable. If plugging mini USB cable and rechargeable batteries in keyboard inside, the red LED will be on. After fully charging, the LED will be off.

If user puts the non-rechargeable batteries in the keyboard and plugs the Mini USB cable, the LED will flash to inform user.

D. Connection Steps of Iron Horse Keyboard driver

Create the first connection after installation

Step 1: Go to Start > Programs, and click "BT HID Keyboard" to launch the keyboard driver.

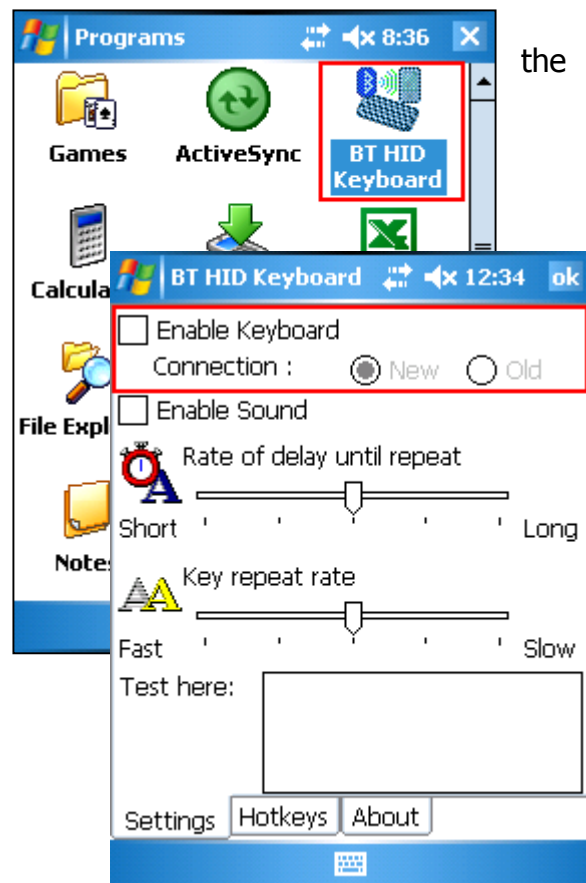
Step 2: Please turn on the power light on keyboard

Step 3: Check "Enable Keyboard". The searching BT devices dialog will be pop up.

Step 4: Select a BT HID keyboard in the searching dialog. The PIN code dialog will be pop up.

Step 5: Input the PIN code showed in the PIN code dialog and press "Enter" key after the PIN code is inputted.

If a new connection is successful established, a "plug-in" sound will inform the user that it is successful to connect.



Create another new connection after a connection is destroyed

Situation 1: Select the "New" option

Step 1: Select the "New" option, and check "Enable Keyboard"

Step 2: Select a BT keyboard in the searching dialog.

Step 3: Input the PIN code and press the "Enter" key.

It will play a "Plug-in" sound to inform a user that a connection is established.

Situation 2: Select the "Old" option

Step 1: Select the "Old" option and check "Enable keyboard".

Step 2: Input the PIN code which is showed in the PIN code dialog and press the "Enter" key.

It will play a "Plug-in" sound to inform a user that a connection is established.

Destroy a connection

Step 1: Press the pairing key on the BT HID keyboard and make sure the power light is on. There will be an "Unplug-in" sound to inform the user the connection is destroyed.

Reconnection (without pressing the pairing key)

Situation 1: Uncheck "Enable Keyboard"

Step 1: Uncheck "Enable keyboard" without pressing the pairing key.

Step 2: Keep the "Old" option is selected.

Step 3: Check "Enable Keyboard" again and strike the keyboard.

The keyboard will reconnect to the same PDA.

Situation 2: Remove / Install batteries

Step 1: Remove batteries on the keyboard.

Step 2: Put batteries back into the keyboard again.

Step 3: Strike the keyboard, and it would reconnect to the same PDA.

Situation 3: soft reset the PDA

Step 1: Soft reset the PDA.

Step 2: Strike the keyboard after rebooting.

The keyboard will reconnect to the same PDA.

Situation 4: Out of range of Bluetooth

Step 1: Take the PDA or the keyboard away from the range of BT.

Step 2: Make sure the two devices both are in the area of BT again.

Step 3: Strike the keyboard and it would reconnect to t

E. Key function for typing on PC (**Without driver support**)

Basic key function -- All key printed by white color.

` ~	Tab	Caps Lock	R-Shift	Ctrl
1 !	Q	A	Z	⌘
2 @	W	S	X	alt
3 #	E	D	C	Space
4 \$	R	F	V	alt gr
5 %	T	G	B	←(Left)
6 ^	Y	H	N	↓(Down)
7 &	U	J	M	→(Right)
8 *	I	K	, <	
9 (O	L	. >	
0)	P	; :	↑(Up)	
- _	[{	` "	L-Shift	
= +] }	Enter	/ ?	
← backspace	\			


Combination key

Keystroke Combination	Function
Shift (⇧) + letter key	Capital letter
Shift (⇧) + number key	Upper-left character on key
Fn + left arrow	Home
Fn + right arrow	End
Fn + up arrow	Page up
Fn + down arrow	Page down
Fn + 1	F1
Fn + 2	F2
Fn + 3	F3
Fn + 4	F4
Fn + 5	F5
Fn + 6	F6
Fn + 7	F7
Fn + 8	F8

Fn + 9	F9
Fn + 10	F10
Fn + -	F11
Fn + =	F12
Fn + Q	Inbox
Fn + U	Internet Explorer
Ctrl + C	Copy
Ctrl + V	Paste
Ctrl + X	Cut
Ctrl + A	Select all
Ctrl + Z	Undo

F. Hotkey on PDA(Need driver support)

Keyboard Shortcuts

Keystroke Combination	Function
	Pocket PC device Start Menu
Fn + W	Pocket Word
Fn + E	Pocket Excel
Fn + R	Calendar
Fn + T	Tasks
Fn + Y	Notes
Fn + A	Contacts
Fn + S	Today
Fn + F	iTask
Fn + number key	Hotkey function
Fn + \	OK
Fn + Backspace	Off
Fn + /	Battery power level
Shift (⇧) + right arrow	Selects area to the right of the cursor
Shift (⇧) + left arrow	Selects area to the left of the cursor
Shift (⇧) + up arrow	Selects area above the cursor
Shift (⇧) + down arrow	Selects area below the cursor

Euro character list

Key	Description	How to activate
D	Character tail for Euro language just like"´"	Alt Gr+"D", then press Key which you want to key in.
F	Character tail for Euro language just like"¨"	Alt Gr+"F", then press Key which you want to key in.
G	Character tail for Euro language just like"ˆ"	Alt Gr+"G", then press Key which you want to key in.
H	Character tail for Euro language just like"˜"	Alt Gr+"H", then press Key which you want to key in.
J	Character tail for Euro language just like"˘"	Alt Gr+"J", then press Key which you want to key in.
K	Character tail for Euro language just like"°"	Alt Gr+"K", then press Key which you want to key in.
Z	Symbol for Euro language "μ"	Alt Gr+"Z"
X	Symbol for Euro language "ç"	Alt Gr+"X"
C	Symbol for Euro language "β"	Alt Gr+"C"
V	Symbol for Euro language "ı"	Alt Gr+"V"
B	Symbol for Euro language "ñ"	Alt Gr+"B"
N	Symbol for Euro language "Ñ"	Alt Gr+"N"
M	Symbol for Euro language "¿"	Alt Gr+"M"
E	Symbol for Euro language "€"	Alt Gr+"E"
P	Symbol for Euro language "£"	Alt Gr+"P"

G. Product Regulatory Information

Safety Statement

Warning: Prolonged or improper use of the keyboard may result in discomfort or injury.

The keyboard is not intended for extended or intensive use. If discomfort develops, consider changing your method of input or the manner in which you use the keyboard or stylus. If discomfort or pain persists, either decrease usage or consult a medical or ergonomics professional.

FCC Statement

This device complies with part 15 of the FCC rules. Operation is subject to the following two conditions: (1) This device may not cause harmful interference, and (2) this device must accept any interference received, including interference that may cause undesired operation. This equipment has been tested and found to comply with the limits for a Class B digital device, pursuant to Part 15 of the FCC rules. These limits are designed to provide reasonable protection against harmful interference in a residential installation. This equipment generates, uses, and can radiate radio frequency energy and, if not installed and used in accordance with the instructions, may cause harmful interference to radio communications. However, there is no guarantee that interference will not occur in a particular installation. If this equipment does cause harmful interference to radio or television reception, which can be determined by turning the equipment off and on, the user is encouraged to try to correct the interference by one or more of the following measures:

- Reorient or relocate the receiving antenna.
- Increase the separation between the equipment and receiver.
- Consult the dealer or an experienced radio/TV technician for help.

The use of shielded I/O cables is required when connecting this equipment to any and all optional peripheral or host devices. Failure to do so may violate FCC rules. Changes or modifications not covered in this manual must be approved in writing by the manufacturer's Regulatory Engineering Department. Changes or modifications made without written approval may void the user's authority to operate this equipment.