

User Manual
Bluetooth Foldable Keyboard
G950, HSTNH-D02K



Issue Date: Apr. 1, 2004

Index

Introduction

Bluetooth Foldable Keyboard Specification 2

Open/Operating/Close Keyboard

Open Bluetooth Foldable Keyboard 3

Use Bluetooth Foldable Keyboard on laptops 4

Close Bluetooth Foldable Keyboard 4

Install the Keyboard Driver

Install the Keyboard Driver 6

Customize your keyboard

Configure the Keyboard 10

Combination Keys 12

Assign Hotkeys 14

Frequently Asked Questions 15

Introduction

This Bluetooth Foldable Keyboard is a 2 fold type with PDA stand. It connects with PDA via wireless Bluetooth. Connection distance is up to 7M. Hope it can bring you convenience of typing.

Bluetooth Foldable Keyboard Specification

Opened:	300*105*13.5 mm
Closed:	150*105*19.7 mm
Weight:	175 grams
Temperature Endurance:	65° C
Power Consumption:	
Working:	10 mA
Sleeping:	1300μA

You can get many benefits with the Bluetooth Foldable Keyboard :

Wireless connect with your Pocket PC device.

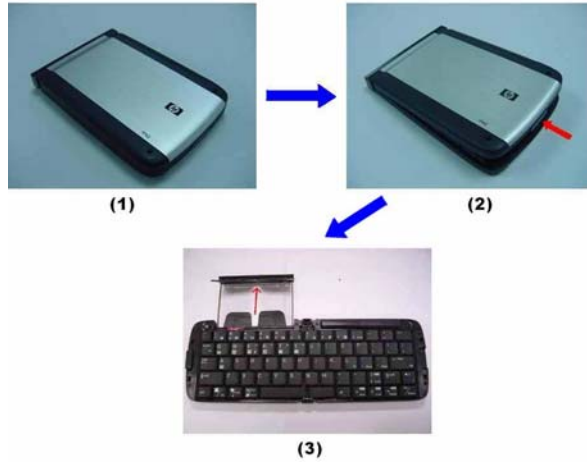
Fast type text into your Pocket PC device.

Quickly access your favorite Pocket PC applications.

Convenient Portability.

Open Keyboard

Open Bluetooth Foldable Keyboard

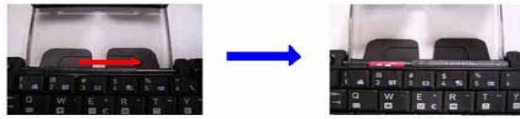


Step 1. Open the keyboard by pressing the button. [Photo (2)]

Step 2. Pull the PDA holder. [Photo (3)]

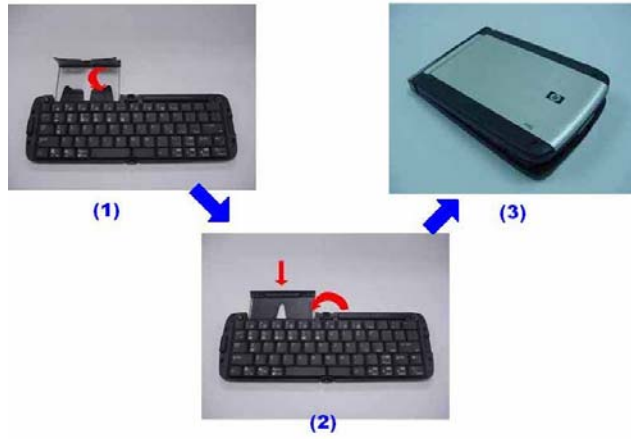
Using Keyboard on lap

Push Lock Pin to "Lock", then you can use this Bluetooth Foldable Keyboard on your laps. Just like below photo.



Close Keyboard


Close Bluetooth Foldable Keyboard



Step 1. Fold up the PDA Holder. [Photo (1)]

Step 2. Push the holder back inside Keyboard and fold up
Keyboard. [Photo (2)]

Warning

**Before closing keyboard, please remember to pull Lock Pin
to “” position. Or, keyboard will be broken.**



Install and Remove the Keyboard Driver

Install the Keyboard Driver

Please complete the following steps:

- 1).Check the part “ Before Installation “ first
- 2) Install the driver and then launch the software
- 3) Connect the keyboard to Pocket PC device.

Before Installation



Please disable any other keyboard applications that you have installed on your Pocket PC device to prevent conflicts

Make sure there is at least 200 Kb of free memory to install the driver.

Step1: Install the Driver

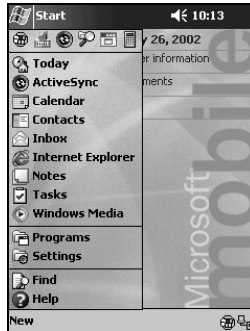
1. Connect the Pocket PC device to a computer through the cradle or cable.
2. Establish connection between the computer and Pocket PC device by using Microsoft ActiveSync.



3. Insert the CD Disk into the CD-ROM/ Floppy drive.
4. Tap twice on the **My Computer**  icon , and then choose your CD-ROM drive  .
5. Choose the directory which contains the just language version of driver that you want to install.
6. Execute **Setup.exe** inside the directory. Please follow the on-screen procedure step by step.

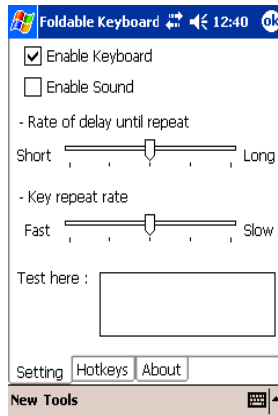
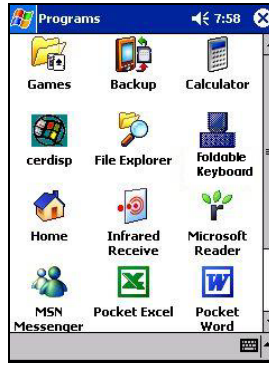
Step 2: Launch the Software

1. Turn on the Pocket PC.
2. Select **Start > Programs**.



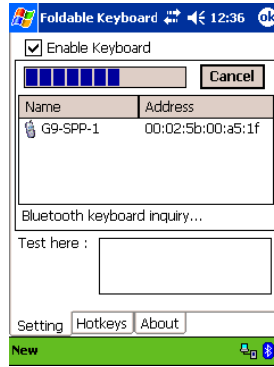
3. Tap the **Bluetooth Foldable Keyboard** icon, and add a check

mark in the check box in front of the Bluetooth Foldable Keyboard.

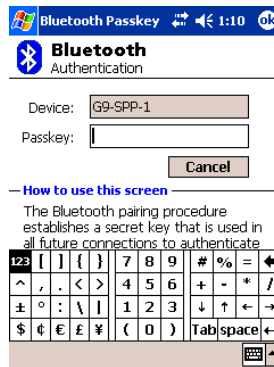


Step 3: Connect Keyboard to Pocket PC

1. Now PDA will inquiry Bluetooth Foldable Keyboard.



2. At first time, you need to key-in Bluetooth Passkey.



3. Put the Pocket PC on the Holder of keyboard.



Disconnect the Keyboard

Tap the connect/disconnect Bottom, Keyboard has been disconnected. You will see orange light sparkle.



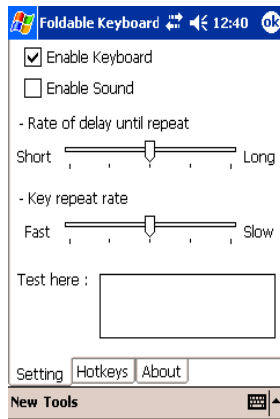
Customize Your Keyboard

Configuring the Keyboard

You can have several kinds of typing feeling on your Bluetooth

Foldable Keyboard by customizing your keyboard:

1. On your Pocket PC, tap the Bluetooth Foldable Keyboard icon and launch it.



2. Select the **Setting** tab.

3. Tap the **Enable Sound** check box to hear a click every time you press a key.

Slide the **Delay until repeat** indicator to lengthen or shorten the time the keyboard waits before repeating a pressed key. The right side of the scale specifies a longer delay time.




Slide the **Key repeat rate** indicator to speed up or slow down the rate at which the keyboard repeatedly displays a pressed key. The right side of the scale specifies a slower repeat rate.

Tap in the **Test here:** field to enter characters from the keyboard.

Combination Keys

The keys on the Bluetooth Foldable Keyboard perform additional functions when pressed in the combinations indicated in below table.

For US/UK/Spanish/Chinese/Brazil/Italian versions

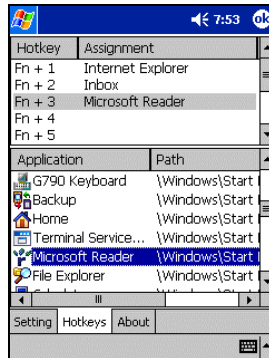
Keystroke Combination	Function
Shift (⇧)+ letter key	Capital letter
Shift (⇧) + number key	Upper left character on key
	Pocket PC device Start Menu
Fn + 	Today
Fn + Q	Mail box
Fn + W	Pocket Word
Fn + E	Pocket Excel
Fn + R	Calendar
Fn + T	Tasks
Fn + Y	Notes
Fn + A	Contacts
Fn + 	Explorer
Fn + CapsLock	NumLock mode

Fn + Tab	Escape
Fn + number key	Hotkey function
Fn + Enter	OK
Fn + up arrow	Page up
Fn + down arrow	Page down
Fn + left arrow	Home
Fn + right arrow	End
Ctrl + C	Copy
Ctrl + V	Paste
Ctrl + X	Cut
Ctrl + A	Select all
Ctrl + Z	Undo
Shift (⇧) + right arrow	Selects area to the right of the cursor
Shift (⇧) + left arrow	Selects area to the left of the cursor
Shift (⇧) + up arrow	Selects area above the cursor
Shift (⇧) + down arrow	Selects area below the cursor

Assign Hotkeys

Through hotkey combinations Fn+0 to Fn+9, you can launch a variety of applications with just a few keystrokes by following the procedure below

1. On your Pocket PC, tap **Bluetooth Foldable Keyboard** application and launch it.
2. Select the **Hotkeys** tab.



3. In the top pane, select the hotkey combination you want to configure.
4. In the bottom pane, select the application you want to assign to the hotkey combination.
5. Select the OK button at the top of the screen to set the assignment and close the window, and then you have finished the

assignments of Hotkeys.

Frequently Asked Questions

A) How do I uninstall the driver?

Select **Start > Settings > System tab > Remove Programs**.

Select **Bluetooth Keyboard** from the list of applications. Then press the **Reset** button the Pocket PC for several seconds so your new settings can take effect.

B) I pressed a key on the keyboard, but the letter did not register.

Be sure the keyboard is connected to the Pocket PC via Bluetooth (the connection light will turn off). If the connection is secure, remove the keyboard driver from the Pocket PC, and then reinstall it.

C) How can I make backlight (frontlight) stay on while typing?

Select **Start>Settings>System tab>Backlight**(or **Frontlight** in some device)

Select **Battery Power** Tab.

Remove a check in the "**Turn off backlight if device is not used for...**" checkbox and then Select **OK**.

D) My Pocket PC will not sync through my serial cradle since installing the Bluetooth Foldable Keyboard driver.

It is necessary to disable the Bluetooth Foldable Keyboard driver prior to synching through a serial connection. Please refer to "Launch the Software", page 7 of this manual. Once you have completed synching data, you must re-enable the driver to operate the keyboard.

E) My Pocket PC will not wake up when shut down the power during KB connection.

It is necessary to upgrade your iPAQ ROM version, please follow up below steps:

Step 1: Link HP's website,

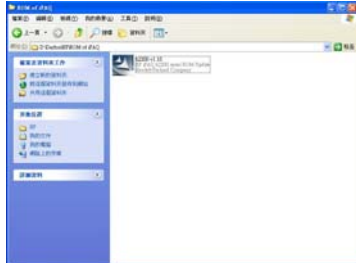
<http://h18007.www1.hp.com/support/files/handheldiPAQ/us/index.html?cat=iPAQ%20Internet%20Devices>.

Download the latest ROM for your iPAQ model.



Step 2: UnZip new version ROM,

Double click new download file, and follow up instructions.



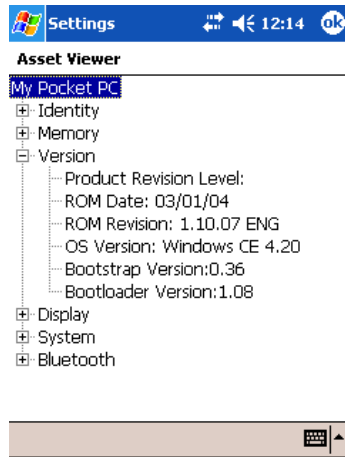
Step 3: Hard Rest iPAQ and update Latest ROM,

You can see the current version about your iPAQ, please follow up instruction to update ROM



Step 4: Wait 10 minutes, then it's OK.

You can see the ROM version now.



F) My Pocket PC can not connect with Bluetooth Foldable

Keyboard

Please remove batteries to reset the keyboard and install them again, you can see connection indicator twinkle normally. Then please refer to "Launch the Software", see page 7. You can connect the keyboard again.

NOTE: THE MANUFACTURER IS NOT RESPONSIBLE FOR ANY RADIO OR TV INTERFERENCE CAUSED BY UNAUTHORIZED MODIFICATIONS TO THIS EQUIPMENT. SUCH MODIFICATIONS COULD VOID THE USER'S AUTHORITY TO PERATE THE EQUIPMENT.