

Bluetooth Universal Keyboard



User Guide

Index

Introduction

Foldable Keyboard Specification	3
---------------------------------------	---

Open/Operating/Close Keyboard

Open Foldable keyboard	3
Use Foldable keyboard on laps	4
Close Foldable keyboard.....	5
Introduction of Switch Button.....	6
Introduction of LED	7
Link Behavior	8

Install and Remove the Keyboard Driver

Install the Keyboard Driver	9
-----------------------------------	---

Customize your keyboard

Configure the Keyboard.....	14
-----------------------------	----

Frequently Asked Questions

15

Introduction

Congratulations on your purchase of the Innovative Bluetooth universal Keyboard. Now, if you replace your Bluetooth handheld, you won't have to replace your keyboard. Using Bluetooth HID or SPP Profile technology to communicate with your handheld, this innovation lets you input data to your Bluetooth handhelds without physically attaching it to the Keyboard. It works with most popular Bluetooth handhelds. With the Bluetooth PDA Keyboard, presents you with another long-term PDA solution. Hope it can bring you convenience of typing.

Bluetooth Universal Keyboard Specification

Bluetooth Spec :

Bluetooth core Spec v1.1 compliant

Bluetooth SPP & HID Profile compliant

Bluetooth Radio Power : Class2 (0 dBm)

Frequency Range : 2.400 ~ 2.4835 GHz at 0.1% BER

Communication Distance: up to 7M

Operating Time: 2 AAA battery provide

Continuous Operation up to 40 hrs

Standby mode up to 600 hrs

65-Key Qwerty Keyboard

18mm Key pitch – Horizontal; 17.2 vertical

Dimensions: Opened: 300*105*13.5mm / Closed: 150*105*19.7 mm

Power Consumption: Working: 30 mA / Sleeping: under 4 mA

Working voltage : 1.9~3.3V

Rating: 3V/100mA

EMI/EMC: FCC Part 15B; Class-B;

FCC Part 15C EN300 328;EN 301 489

LED : One Bluetooth link status LED (Green)

One Low-battery LED (Red)

Open Keyboard

Open Foldable Keyboard

Step 1. Open the keyboard by pressing the button.

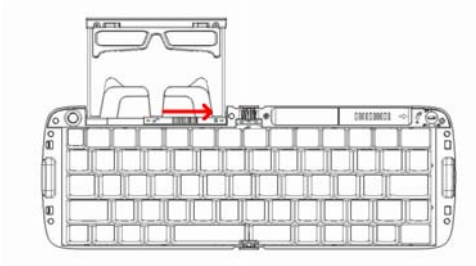


Step 2. Pull the PDA holder.



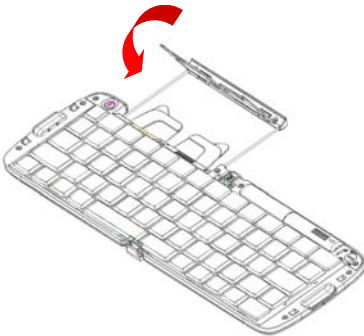
Using Keyboard on lap

Push Lock Pin to “Lock”, then you can use this foldable keyboard on your laps.

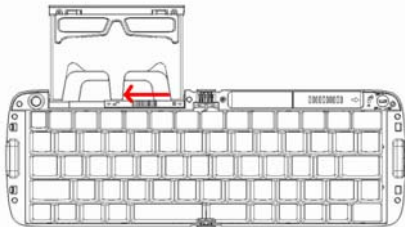


Close Keyboard

Step 1. Fold up the PDA Holder.



Step 2. Push the holder back inside Keyboard and fold up Keyboard.



Warning

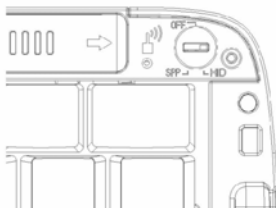
Before closing keyboard, please remember to pull back Lock Pin.

Once **Unlocked**  appears, close the keyboard. Or, keyboard will be broken.

Introduction of Switch Button

The 3-stage switch enables you to select among different working modes.

Switch position: Upper right corner of the keyboard.



Introduction of LED

LED position: Upper right corner of the keyboard.



LED function:

- To indicate the Bluetooth connection status (in Green light).
The LED will flash quickly when keyboard is trying in connecting to your Pocket PC.
The LED will stop flashing when Bluetooth link is build.
The LED will flash when keyboard is disconnected to your Packet PC.
- To indicate Battery status (in Red light).
The LED will flash slowly when battery is low. We suggest to replace batteries in 3 days. The keyboard will get into sleeping mode when the voltage of battery is lower than 1.8V.

Link Behavior

Before first connection to your Pocket PC

Keyboard will get into pairing mode when power on and the LED will flash slowly when waiting to connect to your Pocket PC. If not inquired by any Bluetooth handheld in five minutes, the keyboard will get into sleep mode. To get into pairing mode, you need to awake the keyboard either by power on the keyboard again or by pressing the connect button.

After the first connection was built in HID profile:

The keyboard will get into pairing mode automatically (the LED flash quickly) when you remove Bluetooth Dongle on your Pocket PC or when you take your Pocket PC out of communication distance or when you power on the keyboard again. The keyboard will get into sleep mode after three minutes if not inquired by any Bluetooth handheld. To active the connection, you only need to power on again or press any key on keyboard. Do not press connect button again.

Note: There is a virtual link between the keyboard and your Pocket PC when the first connection was built in HID mode. Once the keyboard is paired to a PC, it cannot link to other Bluetooth handhelds anymore. Please press connect button to release the virtual link and pair the keyboard to another Bluetooth handheld.

After the first connection was build in SPP profile:

The keyboard will get into pairing mode automatically (the LED flash quickly) when you remove Bluetooth Dongle on your Pocket PC or when you take your Pocket PC out of communication distance. Please kindly repairing the keyboard to your Pocket PC according to **Section Connect Keyboard to Pocket PC** in this manual

Install and Remove the Keyboard Driver

Install the Keyboard Driver

Please complete the following steps:

- 1).Check the part “ Before Installation “ first
- 2) Install the driver and then launch the software
- 3) Connect the keyboard to Pocket PC device.

Before Installation

Please disable any other keyboard applications that you have installed on your Pocket PC device to prevent conflicts.

Make sure there is at least 300 Kb of free memory to install the driver. We recommend that you back up all files in your Pocket PC prior to installation.

Step1: Install the Driver

1. Close all active windows on your Pocket PC.
2. Connect your Pocket PC to your desktop computer through the cradle or cable and make sure Microsoft® ActiveSync® is operational.
3. Establish connection between the computer and Pocket PC device by using Microsoft ActiveSync.



4. Insert the CD Disk into the CD-ROM/ Floppy drive or download the Driver from website provided in Quick Start Guide..
5. Execute **Setup.exe** inside the directory. Please follow the on-screen procedure step by step.

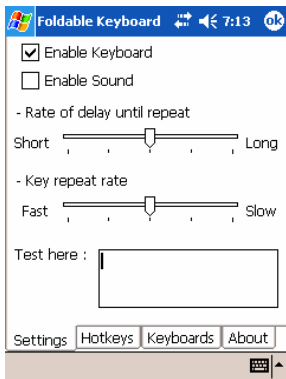
Step 2: Launch the Software

1. Turn on the Pocket PC.
2. Select **Start > Programs**.



3. Tap the **Foldable Keyboard** icon, and add a check mark in the check box in front of the **Enable Keyboard**.



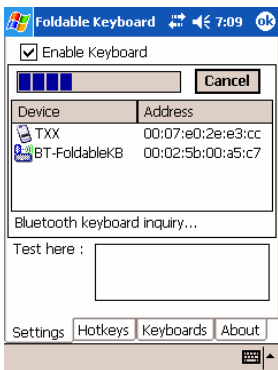


Step 3: Connect Keyboard to Pocket PC

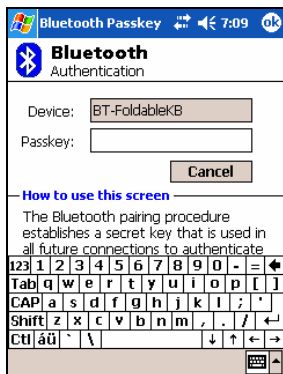
1. Press the connection button to inquiry mode



2. Your Pocket PC will inquiry Bluetooth Keyboard.



3. Passkey needed. For HID profile, you need to key-in Bluetooth Passkey "0000" at first time. For SPP profile, you need to key-in Bluetooth Passkey (shown on the monitor of your Pocket PC) every time.



3. Put the Pocket PC on the Holder of keyboard.

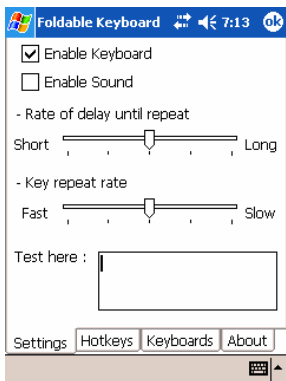


Customize Your Keyboard

Configuring the Keyboard

You can have several kinds of typing feeling on your foldable Keyboard by customizing your keyboard:

1. On your Pocket PC, tap the Foldable Keyboard icon and launch it.



2. Select the **Setting** tab.
3. Tap the **Enable Sound** check box to hear a click every time you press a key.

Slide the **Delay until repeat** indicator to lengthen or shorten the time the keyboard waits before repeating a pressed key. The right side of the scale specifies a longer delay time.

Slide the **Key repeat rate** indicator to speed up or slow down the rate at which the keyboard repeatedly displays a pressed key. The right side of the scale specifies a slower repeat rate.

Tap in the **Test here:** field to enter characters from the keyboard.

Frequently Asked Questions

A) How do I uninstall the driver?

Select **Start > Settings > System tab > Remove Programs**.

Select **Foldable Keyboard** from the list of applications. Then press the **Reset** button the Pocket PC for several seconds so your new settings can take effect.

B) I pressed a key on the keyboard, but the letter did not register.

Be sure the keyboard is connected to the Pocket PC via Bluetooth

(the LED will not flash when the keyboard is well-connected). If the connection is secure, remove the keyboard driver from the Pocket PC, and then reinstall it.

C) How can I make backlight (frontlight) stay on while typing?

Select **Start>Settings>System tab>Backlight**(or **Frontlight** in some device)

Select **Battery Power** Tab.

Remove a check in the “**Turn off backlight if device is not used for...**” checkbox and then Select **OK**.

D) My Pocket PC will not sync through my serial cradle since installing the Bluetooth Keyboard driver.

It is necessary to disable the Bluetooth Keyboard driver prior to syncing through a serial connection. Please refer to **Section Launch the Software** in this manual. Once you have completed syncing data, you must re-enable the driver to operate the keyboard.

FCC Statement

This equipment has been tested and found to comply with the limits for a Class B digital device, pursuant to part 15 of the FCC Rules. These limits are designed to provide reasonable protection against harmful interference in a residential installation. This equipment generates uses and can radiate radio frequency energy and, if not installed and used in accordance with the instructions, may cause harmful interference to radio communications. However, there is no guarantee that interference will not occur in a particular installation. If this equipment does cause harmful interference to radio or television reception, which can be determined by turning the equipment off and on, the user is encouraged to try to correct the interference by on or more of the following measures:

- Reorient or relocate the receiving antenna.
- Increase the separation between the equipment and receiver.
- Connect the equipment into an outlet on a circuit different from that to which the receiver is connected.
- Consult the dealer or an experienced radio/TV technician for help.

This device complies with Part 15 of the FCC Rules.

Operation is subject to the following two conditions:

(1) This device may not cause harmful interference and (2) this device must accept any interference received, including interference that may cause undesired operation.

Warning!

This equipment complies with FCC RF radiation exposure limits set forth for an uncontrolled environment.

This equipment must not be co-located or operating in conjunction with any other antenna or transmitter.

CAUTION:

Any changes or modifications not expressly approved by the party responsible for compliance could void the user's authority to operate the equipment.