

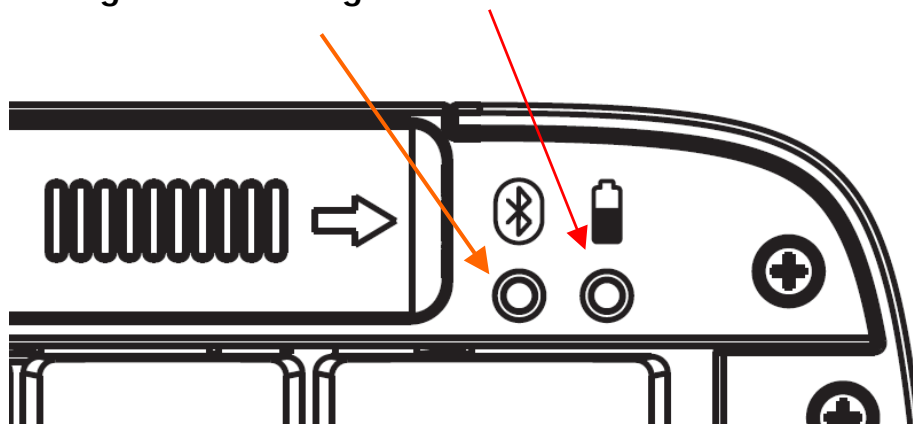
A. Introduction

Congratulations on your purchase of the Innovative Bluetooth Keyboard. Now, if you replace your Bluetooth handheld, you won't have to replace your keyboard. Using Bluetooth HID Profile technology to communicate with your handheld, this innovation lets you input data to your device without physically attaching it to the Keyboard. Connection distance is up to 7M. It works with most popular Bluetooth handhelds. Hope it can bring you convenience of typing.

B. Introduction of LED and Button

LED position: Upper right corner on the keyboard.

LED light color: Orange and Red



LED function:

Orange → To indicate the Bluetooth connection status, detail please refer to following,

Red → To indicate the low battery

Orange LED has two status: Slow flashing and OFF

(a) Slow flashing: Keyboard is in discoverable mode which means the user can inquiry and connects to the keyboard from device side.

(b) OFF: It means the keyboard is in either connected or sleep mode. In discoverable mode, keyboard will go into sleep mode after 60 seconds.

When in connected state, the LED is also off.

Red LED has only one status: Slow flashing

When the battery capacity is low, the red LED flashes, two times per one

second.

Connect button has 2 functions.

(a) Wake up the keyboard.

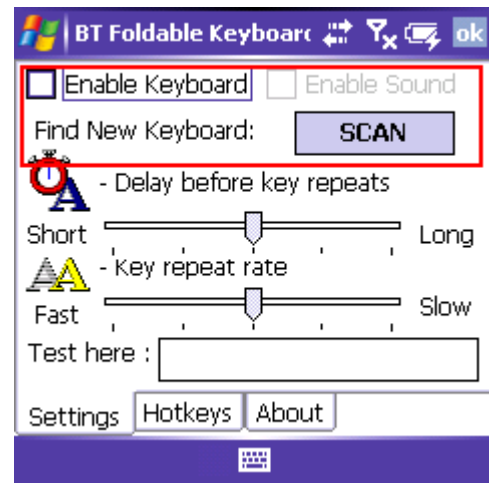
(b) Disconnect the link. When in connected state, user can press connect button to cancel the link. However we recommend the user disconnect the link from the device side.

C. Connection Steps of Iron Horse Keyboard driver

BT connection (WinMobile)

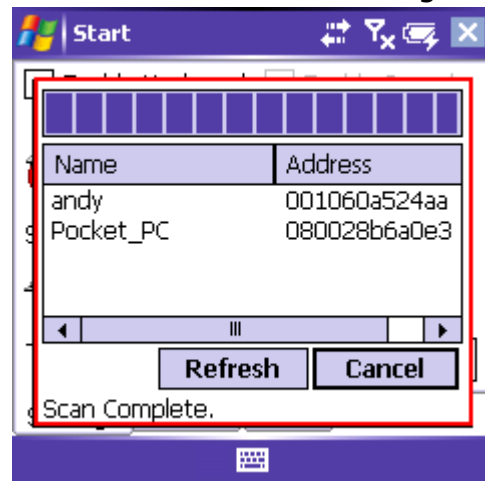
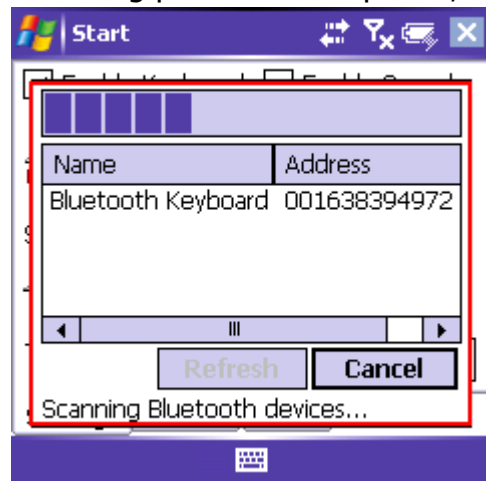
Step 1:

When the user checks the "**Enable Keyboard**" item first time, the scanning dialog will be pop up.



Step 2:

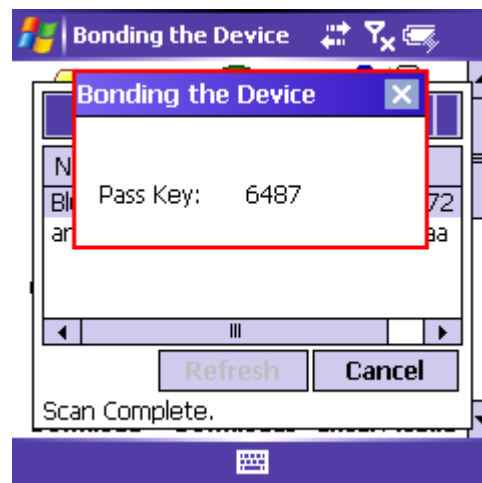
The "**Refresh**" button will be enabled until the scanning process is completed. When the "**Refresh**" button is clicked, it will be disabled again. All the items of the device list will be cleared before the searching process starts. After the searching process is completed, the "**Refresh**" button will be enabled again.



Step 3:

When a user clicks a searched Bluetooth keyboard in the list, it will pop up a bonding dialog for typing PIN code.

If the user types the PIN correctly, it will start to connect to the keyboard. No matter if it succeeds to bond or connect the selected keyboard or not, it will close the searching / connecting dialog, and go back to the "**Settings**" page.



If it succeeds, the "**Enable Keyboard**" item will be checked. If it fails to connect for the first time after the driver is installed, the "**Enable Keyboard**" will not be checked.

Step 4:

If the driver connected the keyboard, the scanning dialog and bonding dialog will not pop up, when you enable the keyboard the next time. If the users need to scan and connect the other keyboards devices, pressing "**SCAN**" button will launch scanning process.

BT connection (PalmOS)

Step 1:

The radio buttons are disabled when the user executes "*BT-foldableKB*" for the first time after installing the driver. The default selected radio is "*OFF*".



Step 2:

When the user taps the "*ON*" button, then searching dialog will be pop up.



Step 3:

When a user clicks a searched Bluetooth keyboard in the list, it will pop up a bonding dialog for typing PIN code



Step 3:

After the connection is success, then user can type the words on the "Test string here".



D. Keyboard Shortcuts and Special Characters

This section lists the various keyboard shortcuts you can use for navigating, moving the cursor, activating menu commands, and typing special characters, symbols, and punctuation. The keyboard has four keys, Ctrl, Fn, Cmd, and Alt Gr, that you use in combination with other keys to execute keyboard shortcuts and type special characters. To help you remember the shortcut keys for your device, the keyboard has color-coded keycap icons and text—blue or orange for Palm OS®, black for Pocket PC.























Cursor movements




Palm OS Shortcut	WinMobile Shortcut	Action
Fn+up arrow	Fn+up arrow	Scrolls up (Palm OS) Page up (Pocket PC)
Fn+down arrow	Fn+down arrow	Scrolls down (Palm OS) Page down (Pocket PC)
None	Fn+left arrow	Home
None	Fn+right arrow	End
Ctrl+left arrow	None	Moves cursor left (back) one word
Ctrl+right arrow	None	Moves cursor right (forward) one word
Ctrl+Shift+left arrow	None	Selects the word to the left of the cursor
Ctrl+Shift+right arrow	None	Selects the word to the right of the cursor
None	Tab	Tabs forward to the next field (may not work in some applications)
None	Shift+Tab	Tabs backward to the previous field (may not work in some applications)
Shift+right arrow	Shift+right arrow	Selects text to the right of the cursor
Shift+left arrow	Shift+left arrow	Selects text to the left of the cursor
Shift+up arrow	Shift+up arrow	Selects text one line above the cursor
Shift+down arrow	Shift+down arrow	Selects text one line below the cursor

Menu commands

Palm OS Shortcut	WinMobile Shortcut	Action
cmd	None	Command stroke 
None	Ctrl+c	Copy
None	Ctrl+v	Paste
None	Ctrl+x	Cut
None	Ctrl+a	Select All
None	Ctrl+z	Undo
Fn+;	None	New
Fn+'	None	Note
Fn+Enter	Fn+Enter	OK
Fn+,	None	Edit
Fn+.	None	Send
Fn+right arrow	None	Details
Fn+left arrow	None	Show
Fn+Del	None	Delete
Cmd+Done	None	Done
Fn+Done	None	Cancel

Keyboard function keys

Palm OS Function Key	WinMobile Function Key	Action
None	Fn+`	esc
Fn+1 	None	Opens Applications view (Palm OS)
None		Opens Start menu (Pocket PC)
None	Fn+i 	Opens Today
Fn+2 	None	Opens pull-down menu for screen currently displayed
Fn+3 	None	Opens Find
Fn+4 	Fn+r 	Opens Calendar
Fn+5 	Fn+a 	Opens Contacts
Fn+6 	Fn+t 	Opens Tasks
Fn+7 	Fn+y 	Opens Memos (Palm) Notes (Pocket PC)
Fn+8 	None	Opens Calculator
Fn+9 	None	Opens Preferences
Fn+0 	Fn+q	Opens the mail application (Palm OS) Inbox (Pocket PC)
None	Fn+u 	Opens Windows Explorer
Fn+- 	None	Opens the web browser
Fn+= 	None	Rotates screen orientation (except Treo 650)
Fn+/ 	Fn+/ /	Displays keyboard battery status

Fn+l 	None	Turns the backlight (frontlight) on or off
None	Fn+w 	Opens Pocket Word
None	Fn+e 	Opens Pocket Excel
None	Fn+0 through 9	Opens the assigned hotkey application
Fn+Enter	Fn+Enter	OK
Fn+;	None	New
Fn+'	None	Note
Fn+,	None	Edit
Fn+.	None	Send
Fn+right arrow	None	Details
Fn+left arrow	None	Show
Fn+Del	None	Delete
Fn+Done	None	Cancel

Characters, symbols, and punctuation marks

Palm OS Shortcut	WinMobile Shortcut	Character	Description
Alt Gr+b	Alt Gr+b	β	Beta
Alt Gr+e	Alt Gr+e	€	Euro
Alt Gr+n	Alt Gr+n	¿	Upside-down “?”
Alt Gr+’	Alt Gr+’	Ñ	Capital N-tilde
Alt Gr+p	Alt Gr+p	£	Pound sterling
Alt Gr+;	Alt Gr+;	ç	Cedilla
Alt Gr+y	Alt Gr+y	¥	Yen
Alt Gr+m	Alt Gr+m	μ	Micro
Ctrl+Fn+O	Ctrl+Fn+O	Ø	Capital O with slash
Ctrl+Fn+o	Ctrl+Fn+o	ø	Lowercase o with slash
Alt Gr+v	Alt Gr+v	¡	Upside-down “!”
Ctrl+Fn+e	Ctrl+Fn+e	Æ	Uppercase AE ligature
Ctrl+Fn+a	Ctrl+Fn+a	æ	Lowercase ae ligature
Ctrl+Fn+w	Ctrl+Fn+w	•	Bullet
Ctrl+Fn+p	Ctrl+Fn+p	©	Copyright
Ctrl+Fn+.	Ctrl+Fn+.	°	Degrees
Ctrl+Fn+i	Ctrl+Fn+i	÷	Divide
Ctrl+Fn+q	Ctrl+Fn+q	¶	Paragraph
Ctrl+Fn+r	Ctrl+Fn+r	®	Registered trademark

Ctrl+Fn+s	Ctrl+Fn+s	§	Section
Ctrl+Fn+t	Ctrl+Fn+t	™	Trademark
Ctrl+Fn+-	Ctrl+Fn+-	±	Plus or minus
Ctrl+Fn+2	Ctrl+Fn+2	½	Half
Ctrl+Fn+3	Ctrl+Fn+3	¾	Three-quarters
Ctrl+Fn+4	Ctrl+Fn+4	¼	One-quarter
Ctrl+Fn+d	Ctrl+Fn+d	¢	Cents
Ctrl+Fn+f	None	<i>f</i>	Script f

Accent marks

Shortcut (Palm OS and Pocket PC)	Character Example	Description
Alt Gr+d	á	Acute accent
Alt Gr+f	à	Grave accent
Alt Gr+g	â	Circumflex
Alt Gr+h	ñ	Tilde
Alt Gr+j	ä	Umlaut
Alt Gr+k	å	Nordic a-ring (for letter "a" only)

strokes for the 5-way navigator on a Palm OS device

Keystroke	Description
Cmd+up arrow	Navigates up
Cmd+down arrow	Navigates down
Cmd+left arrow	Navigates left
Cmd+right arrow	Navigates right
Cmd+Enter	Navigates select

Product Regulatory Information

Safety Statement

Warning: Prolonged or improper use of the keyboard may result in discomfort or injury.

The keyboard is not intended for extended or intensive use. If discomfort develops, consider changing your method of input or the manner in which you use the keyboard or stylus. If discomfort or pain persists, either decrease usage or consult a medical or ergonomics professional.

FCC Statement

This device complies with part 15 of the FCC rules. Operation is subject to the following two conditions: (1) This device may not cause harmful interference, and (2) this device must accept any interference received, including interference that may cause undesired operation. This equipment has been tested and found to comply with the limits for a Class B digital device, pursuant to Part 15 of the FCC rules. These limits are designed to provide reasonable protection against harmful interference in a residential installation. This equipment generates, uses, and can radiate radio frequency energy and, if not installed and used in accordance with the instructions, may cause harmful interference to radio communications. However, there is no guarantee that interference will not occur in a particular installation. If this equipment does cause harmful interference to radio or television reception, which can be determined by turning the equipment off and on, the user is encouraged to try to correct the interference by one or more of the following measures:

- Reorient or relocate the receiving antenna.
- Increase the separation between the equipment and receiver.
- Consult the dealer or an experienced radio/TV technician for help.

The use of shielded I/O cables is required when connecting this equipment to any and all optional peripheral or host devices. Failure to do so may violate FCC rules. Changes or modifications not covered in this manual must be approved in writing by the manufacturer's Regulatory Engineering Department. Changes or modifications made without written approval may void the user's authority to operate this equipment.