

User Manual for WMR210 Camera

V1.0

Step for configuration the camera

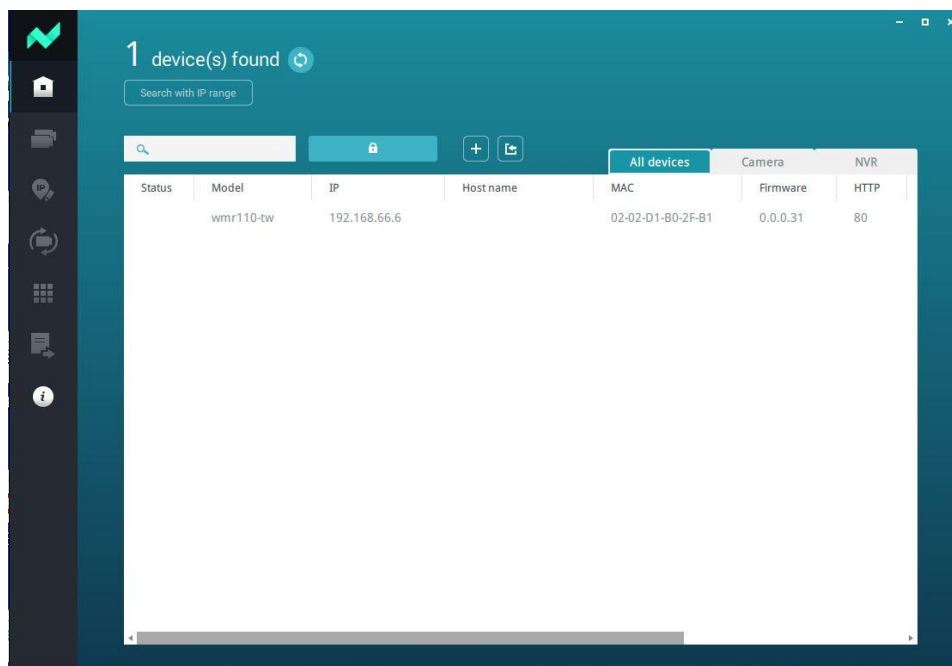
1. The camera is set to AP mode by default, and you can use a laptop to connect to the camera for configuration.

SSID : **VVTK-IPCam-Demo**

Password : **12354678**

2. The default IP is 192.168.66.6. You can also use Vivotek Shepherd to find the camera.

<https://www.vivotek.com/Shepherd#overview>



3. After connecting to the camera, go to the WiFi settings page and set up an AP router that can connect to the network.

(WMR210 Bullet model supports ethernet. User can skip the wifi setting in Step 3 and connect the power and the network cable.)

VIVOTEK
www.vivotek.com

Sanity Test
System
Media
Network
General Settings
WiFi

Scan

WiFi Configuration

SSID: hayes24g
Password: *****
Save

hayes24g	🔒	📶
dlink	🔒	📶
hayes_tplink	🔒	📶
DIR-1210-729c	🔒	📶
ASUS-RT-AX92U	🔒	📶
VIVOTEK_Guest	🔒	📶
VODT_Office	🔒	📶
VIVOTEK_Guest	🔒	📶
VODT_Office	🔒	📶
NVC_73A31	🔒	📶

4. On the “Media > P2P” page, the QR code is for mobile connection.

VIVOTEK
www.vivotek.com

Sanity Test
System
Media
Image
Video
Audio
P2P
Network

TUTK UID

3897NITAMNEFPP3TPSH0SMH56QSGKNZQZJ66SXLICIBUEETB5KAPVNXPJIIY702P
OFWTVW0I3J4POCVJDHJZEWB37TNORK27CBDXLJFFP2IZI

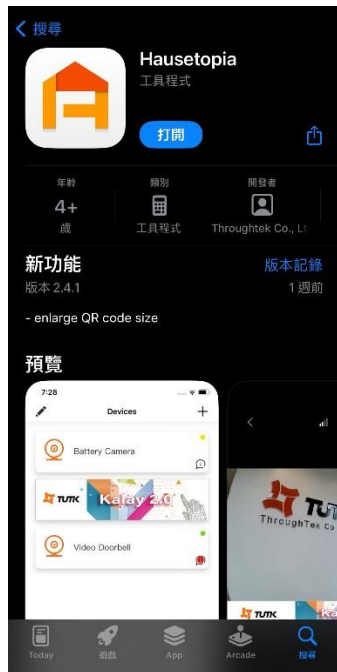
Save

Please scan the QR code to connect the camera.

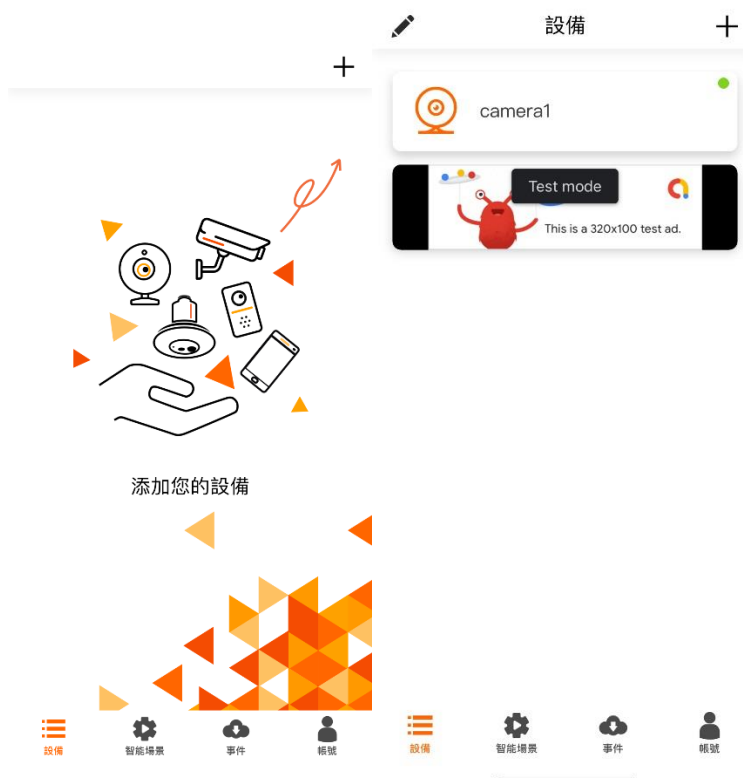
Refresh QRCode

Step for mobile app

1. Download the app **Hausetopia**. Register an account and log in.



2. After scanning the QR code that was just generated in Step 4, you can add the camera to your account.



Note 1:

This equipment has been tested and found to comply with the limits for a Class A digital device, pursuant to part 15 of the FCC Rules. These limits are designed to provide reasonable protection against harmful interference when the equipment is operated in a commercial environment. This equipment generates, uses, and can radiate radio frequency energy and, if not installed and used in accordance with the instruction manual, may cause harmful interference to radio communications. Operation of this equipment in a residential area is likely to cause harmful interference in which case the user will be required to correct the interference at his own expense.

Note 2:

This device complies with Part 15 of the FCC Rules. Operation is subject to the following two conditions: (1) This device may not cause harmful interference, and (2) this device must accept any interference received, including interference that may cause undesired operation.

Caution:

Any changes or modifications not expressly approved by the grantee of this device could void the user's authority to operate the equipment.

RF exposure warning:

This equipment must be installed and operated in accordance with provided instructions and the antenna(s) used for this transmitter must be installed to provide a separation distance of at least 20 cm from all persons and must not be co-located or operating in conjunction with any other antenna or transmitter. End-users and installers must be provided with antenna installation instructions and transmitter operating conditions for satisfying RF exposure compliance.