

Annex B



This test report annex is electronically signed and valid without handwriting signature. For verification of the electronic signatures, the public keys can be requested at the testing laboratory.

Test report annex authorized:

René Oelmann
Lab Manager
Radio Communications & EMC

Internal photos of the EUT

Photo 1: mount and device back side OV41

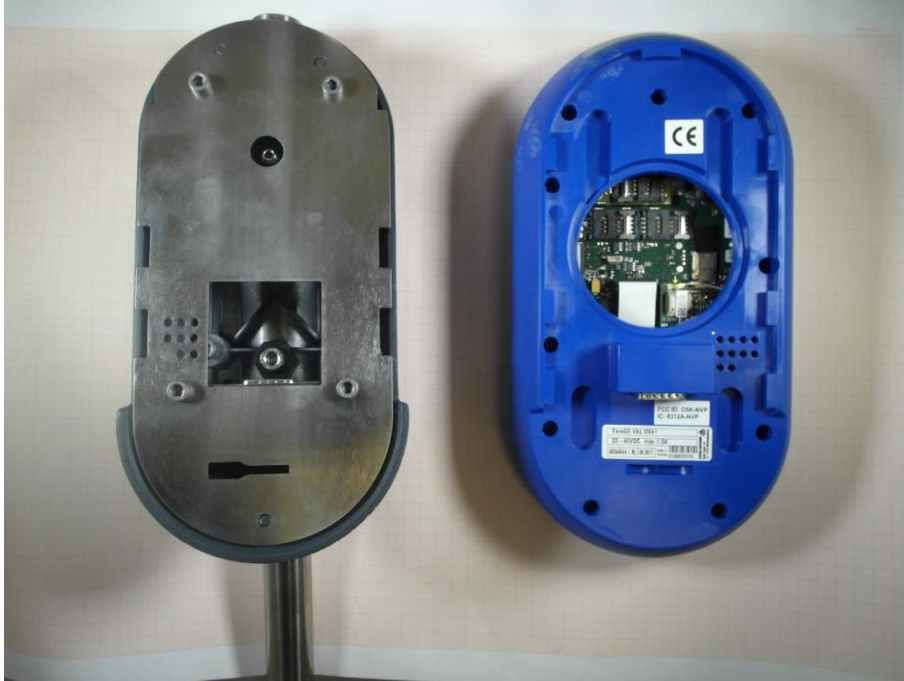


Photo 2: mount and connector OV41

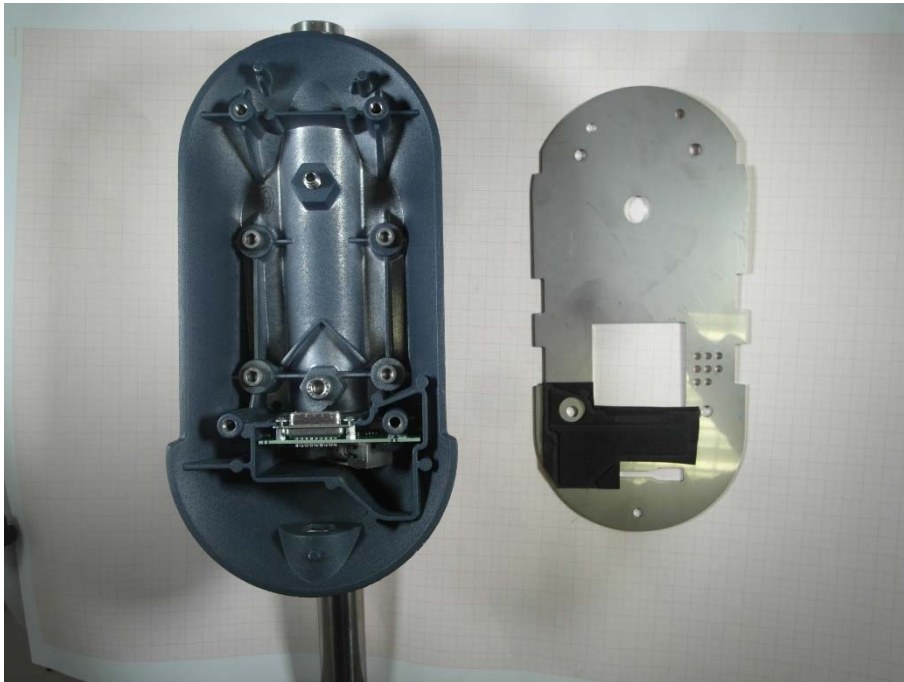


Photo 3: connector OV41

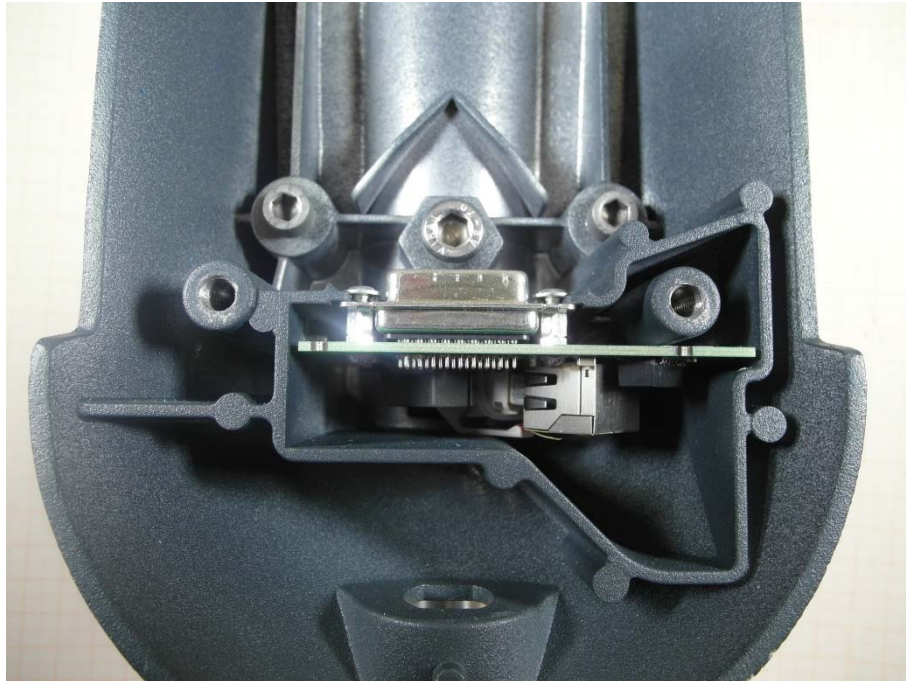


Photo 4: connector board back side OV41

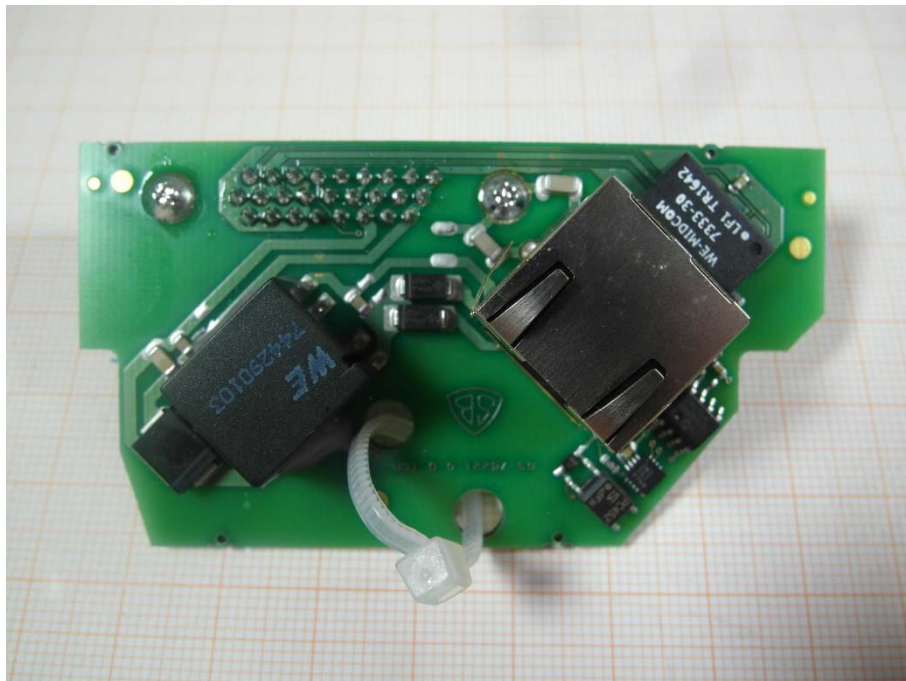


Photo 5: connector board front side OV41

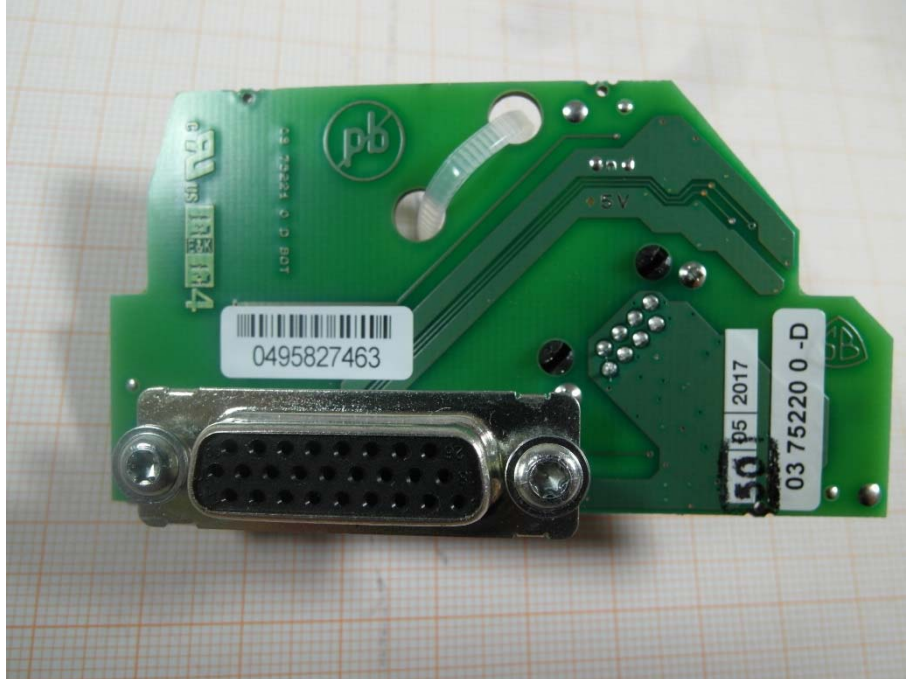


Photo 6: main board top side OV41

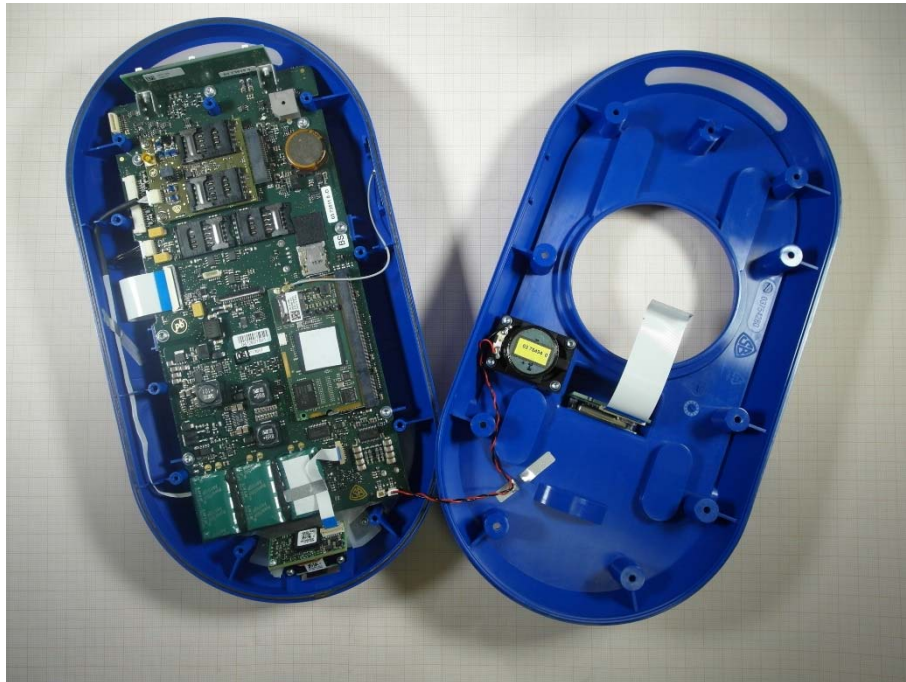


Photo 7: top case back side OV41

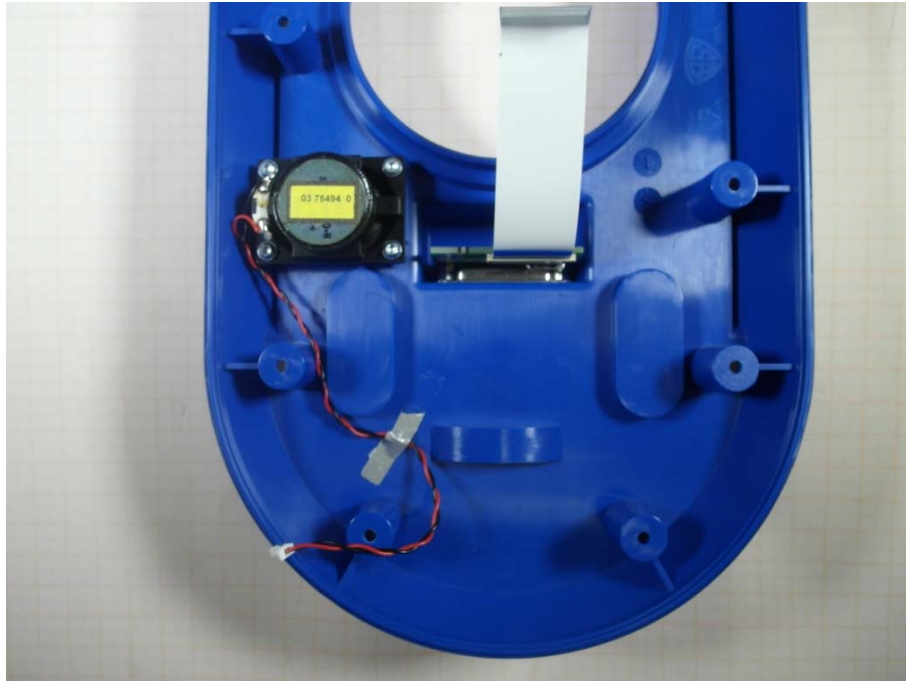


Photo 8: case with main board and additional boards OV41

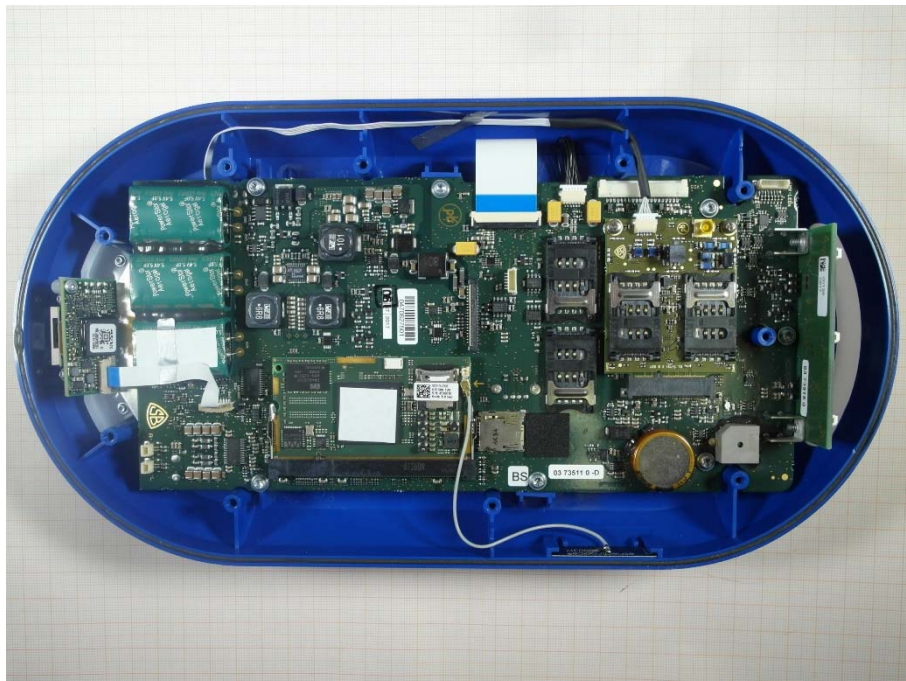


Photo 9: case with main board OV41

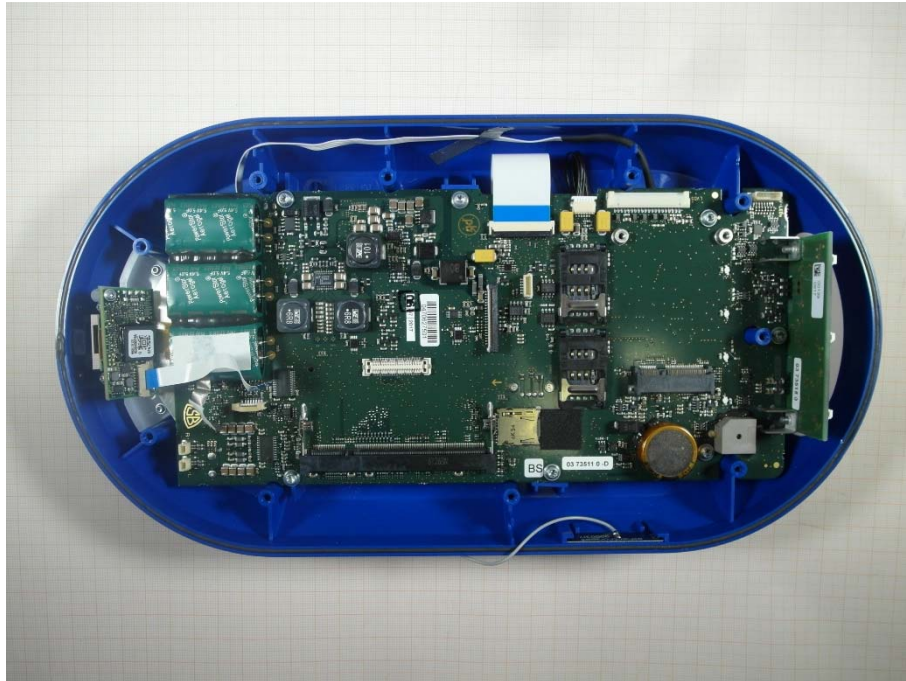


Photo 10: additional board SIM card slots top side OV41

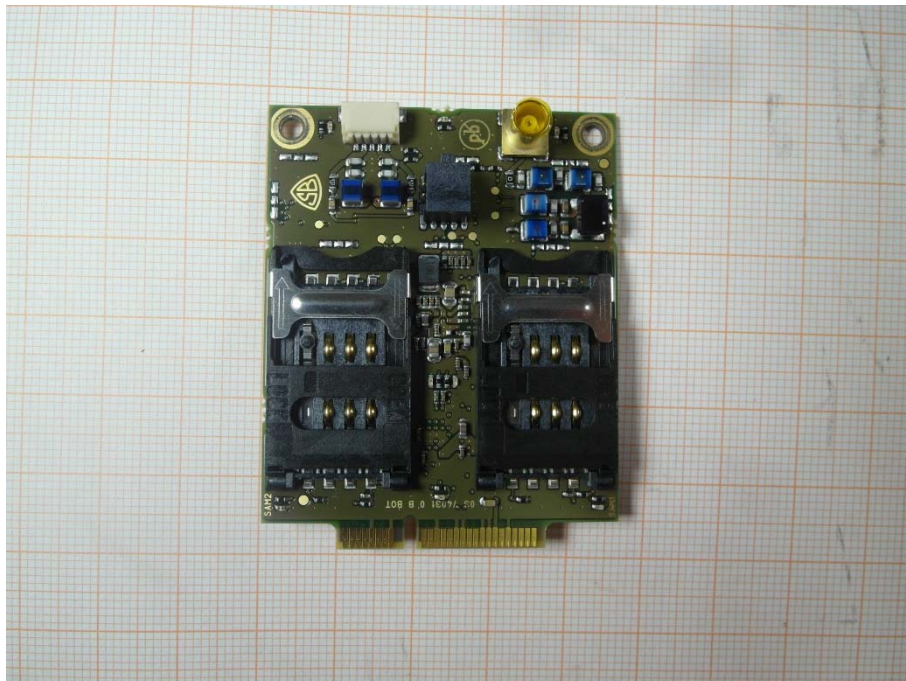


Photo 11: additional board SIM card slots back side OV41

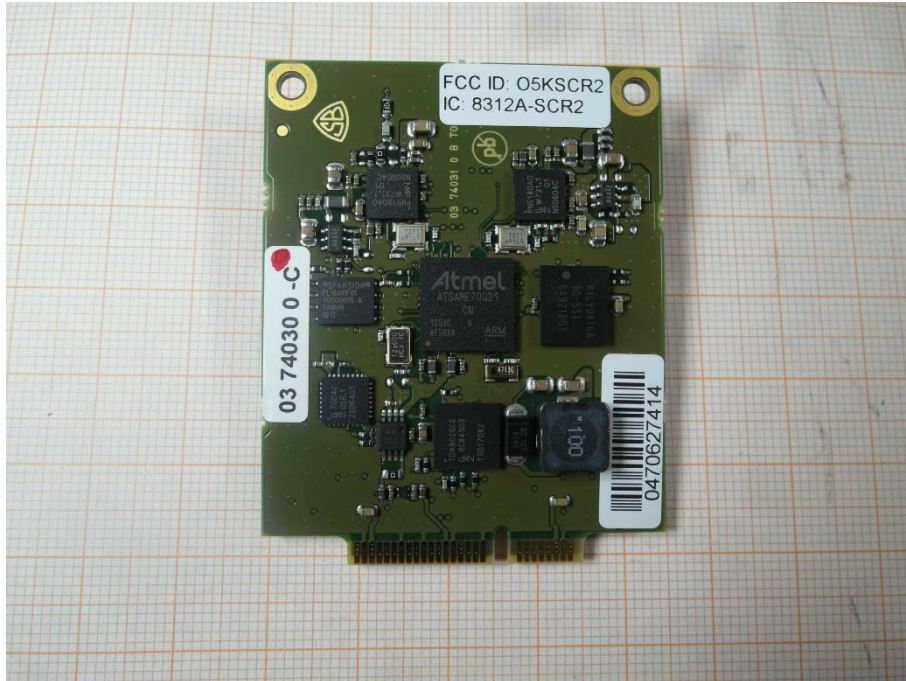


Photo 12: additional board with memory card slot front side OV41



Photo 13: additional board with memory card slot back side OV41



Photo 14: case with mainboard back side OV41



Photo 15: additional board 3 OV41



Photo 16: additional board 4 OV41

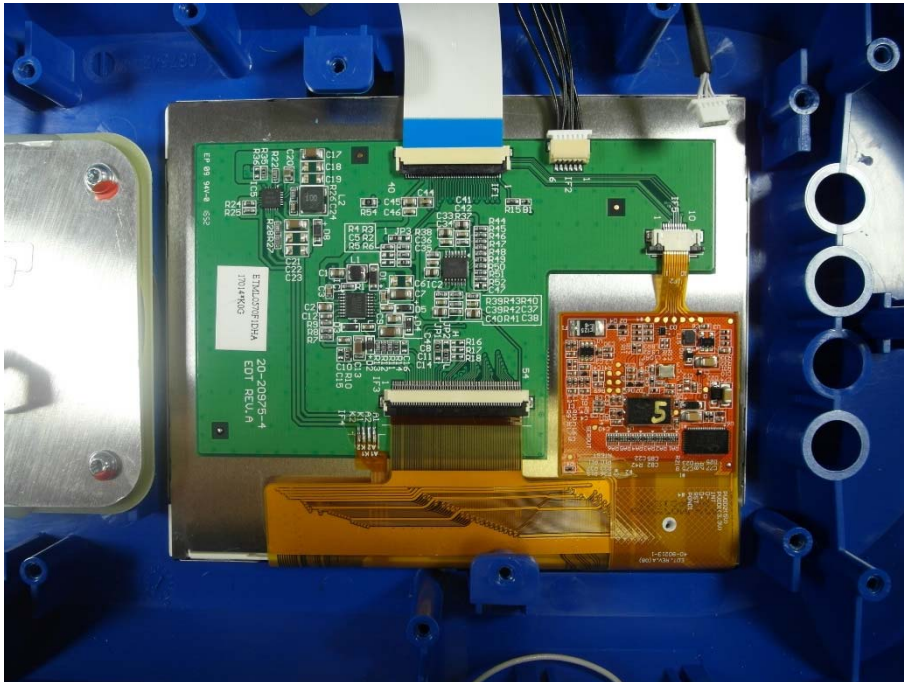


Photo 17: stand and device back side SV51

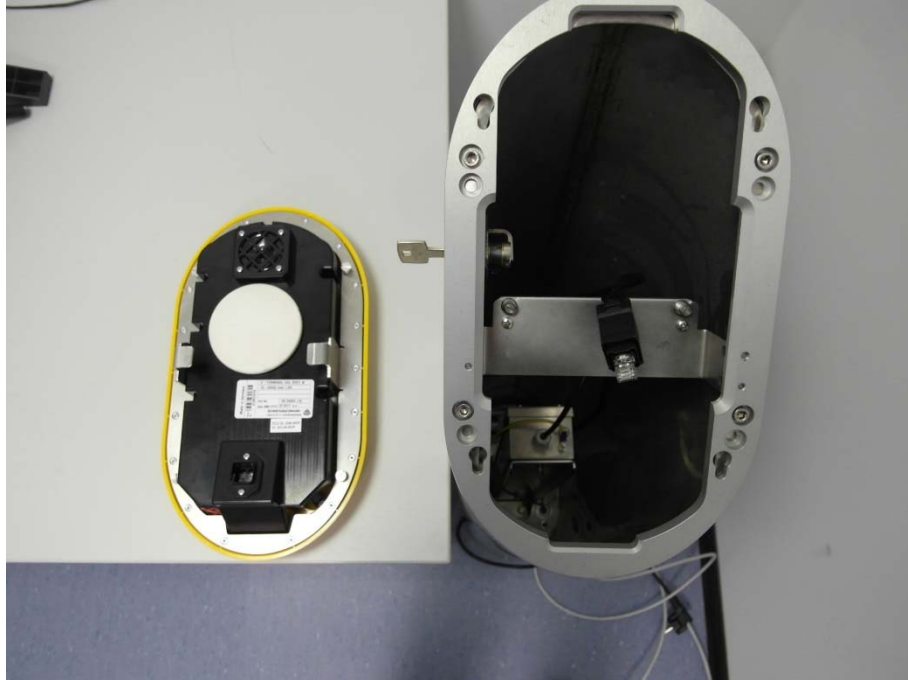


Photo 18: stand inside with LAN connector SV51



Photo 19: device back side SV51



Photo 20: device type identification back side SV51



Photo 21: device back side SV51



Photo 22: device front side SV51



Photo 23: back side and mounting SV51



Photo 24: power connector inside SV51

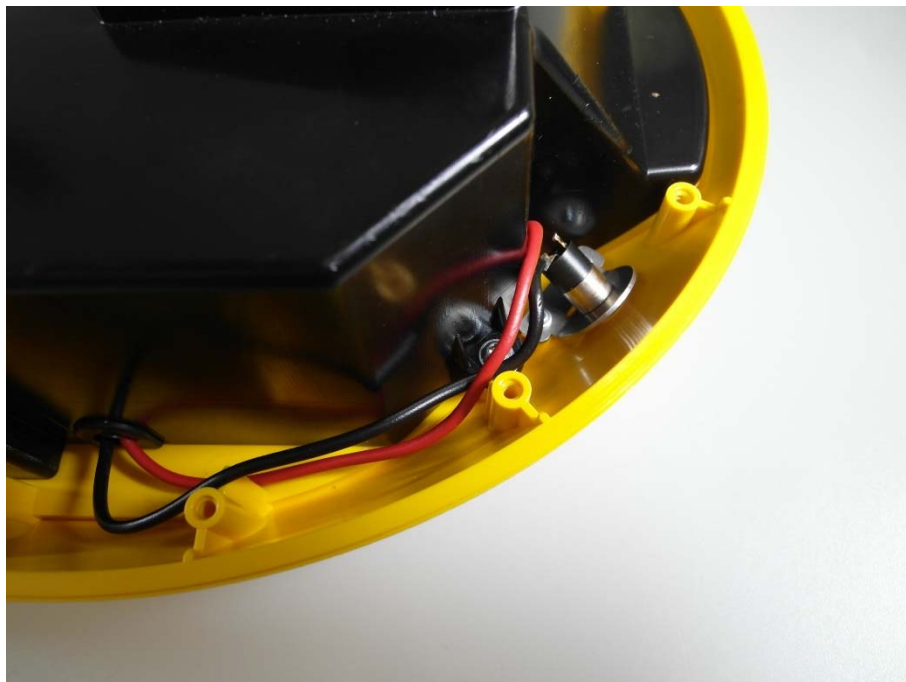


Photo 25: power connector and optical sensor outside SV51



Photo 26: device uncovered SV51



Photo 27: back cover back side with LAN connector, power connector and speaker SV51

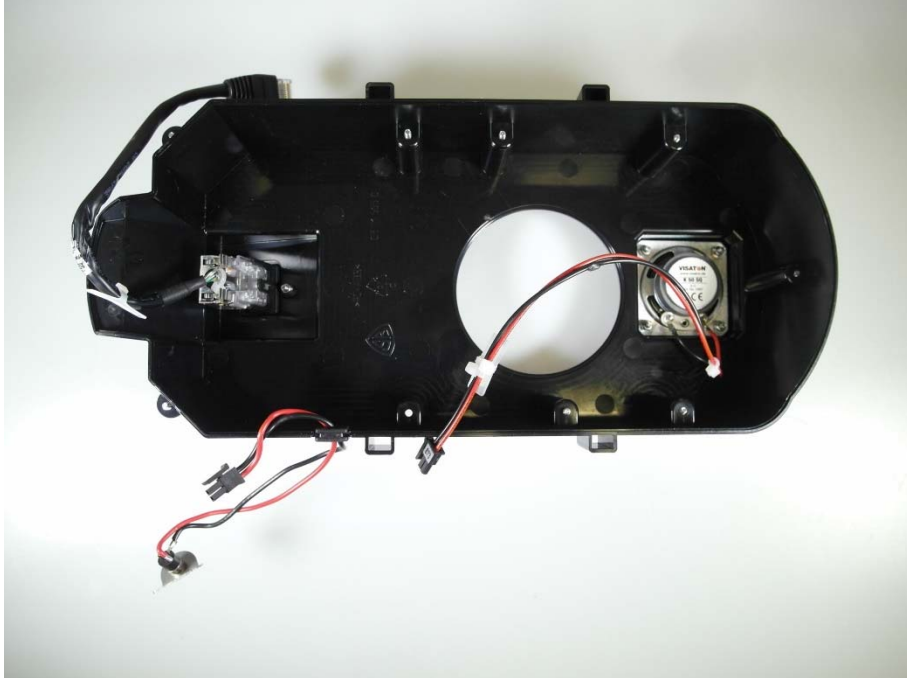


Photo 28: speaker SV51



Photo 29: network connector SV51



Photo 30: case with mainboard and additional boards SV51

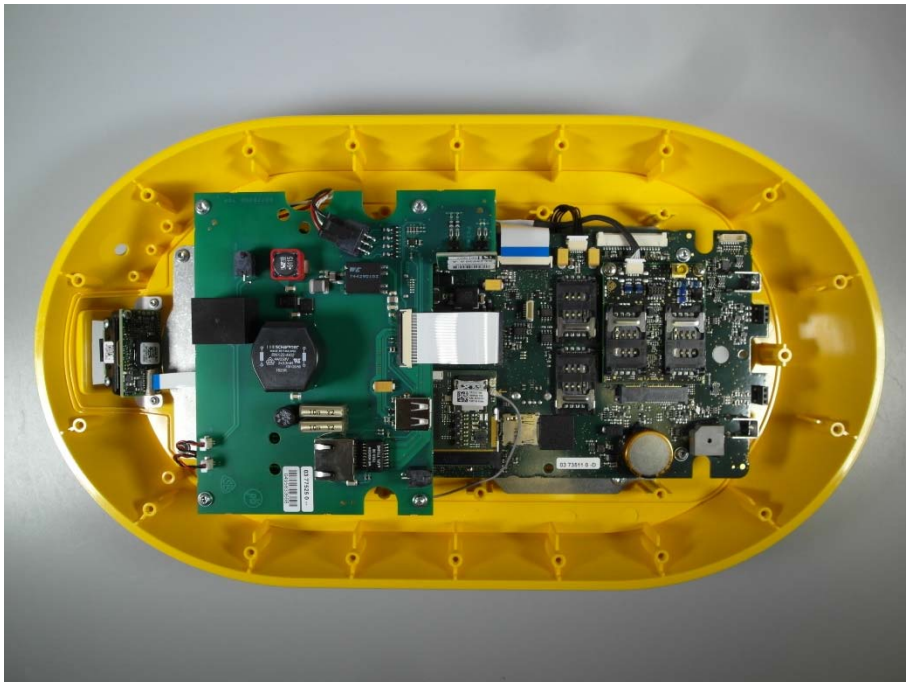


Photo 31: additional board power supply top side SV51

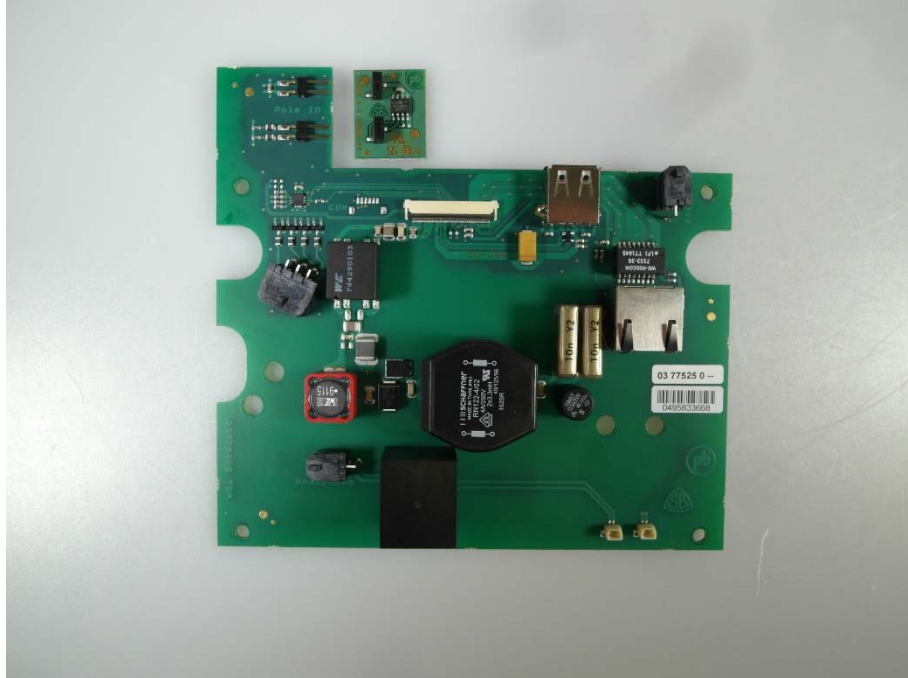


Photo 32: additional board power supply back side SV51

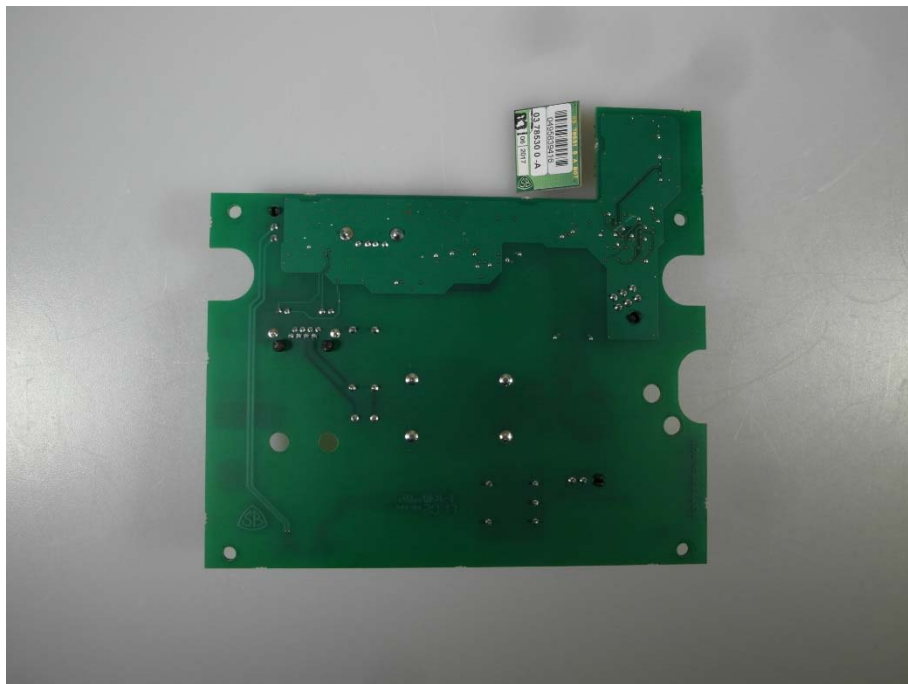


Photo 33: main board with additional Wi-Fi board SV51



Photo 34: additional Wi-Fi board SV51

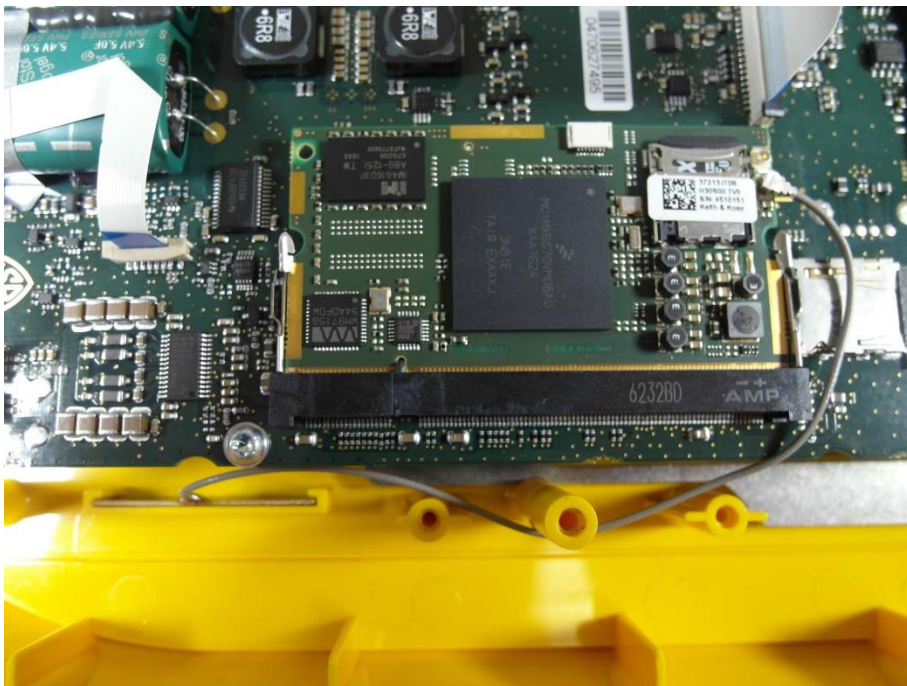


Photo 35: additional Wi-Fi board top side SV51



Photo 36: connector board back side SV51



Photo 37: Wi-Fi antenna top side OV41 / SV51



Photo 38: Wi-Fi antenna back side OV41/ SV51



Photo 39: additional board with SIM card slots top side SV51



Photo 40: additional board with SIM card slots back side SV51



Photo 41: main board top side SV51



Photo 42: main board back side SV51



Photo 43: additional board with display electronic SV51



Photo 44: top cover back side and display back side SV51



Photo 45: additional board display back side SV51



Photo 46: display front side SV51



Photo 47: top cover back side with buttons and microphone 3 SV51



Photo 48: top cover front side SV51



Photo 49: top cover and RFID antenna SV51



Photo 50: RFID antenna back side SV51



Photo 51: RFID antenna front side SV51



Photo 52: additional board optical sensor front side SV51



Photo 53: additional board optical sensor back side SV51



Photo 54: mounting optical sensor SV51

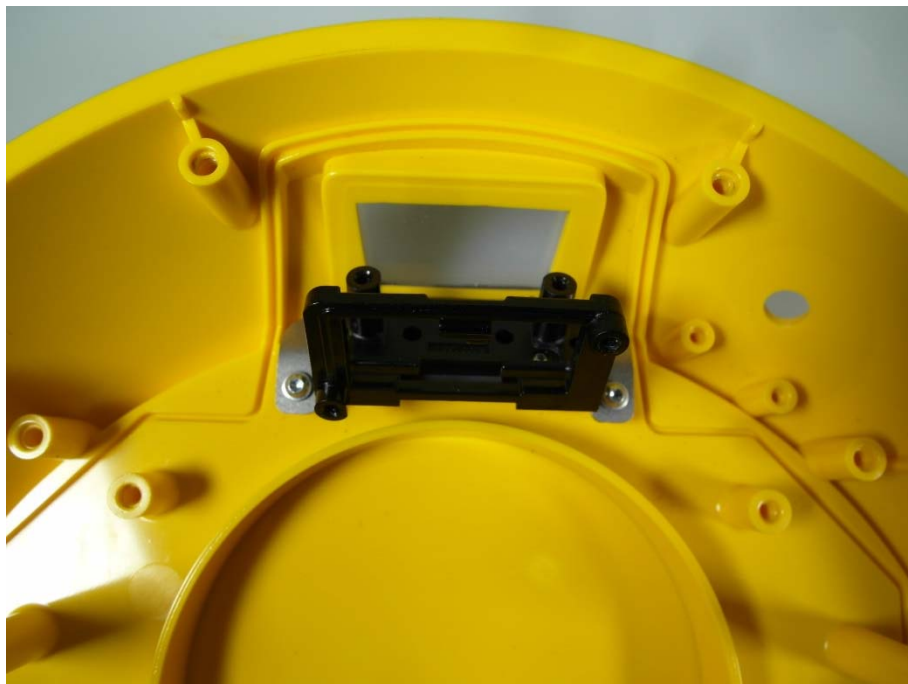


Photo 55: optical sensor back side SV51



Photo 56: optical sensor front side SV51

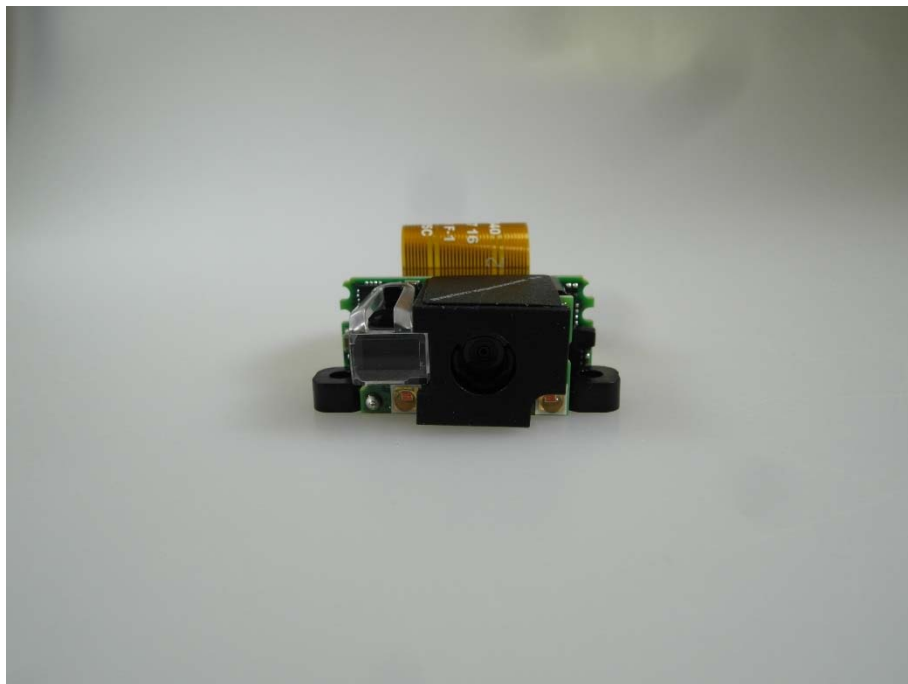


Photo 57: optical sensor top side SV51



Document history

Version	Applied changes	Date of release
	Initial release	2017-12-20