



SAR TEST REPORT

No. I17Z61084-SEM02

For

Lenovo PC HK Limited

Portable Tablet Computer

Model name: Lenovo TB-7504X

With

Hardware Version: Lenovo Tablet TB-7504X

Software Version: TB-7504X_RF01_170712

FCC ID: O57TB7504X

Issued Date: 2017-8-11



Note:

The test results in this test report relate only to the devices specified in this report. This report shall not be reproduced except in full without the written approval of CTTL.

The report must not be used by the client to claim product certification, approval, or endorsement by NVLAP, NIST, or any agency of the U.S. Government.

Test Laboratory:

CTTL, Telecommunication Technology Labs, CAICT

No. 52, Huayuan North Road, Haidian District, Beijing, P. R. China 100191.

Tel:+86(0)10-62304633-2512, Fax:+86(0)10-62304633-2504

Email: ctl_terminals@caict.ac.cn, website: www.caict.ac.cn



REPORT HISTORY

Report Number	Revision	Issue Date	Description
I17Z61084-SEM02	Rev.0	2017-8-5	Initial creation of test report
I17Z61084-SEM02	Rev.1	2017-8-11	Add the evaluation of tilt angle for proximity sensor triggering in annex I on page 170&171

TABLE OF CONTENT

1 TEST LABORATORY	5
1.1 TESTING LOCATION	5
1.2 TESTING ENVIRONMENT.....	5
1.3 PROJECT DATA	5
1.4 SIGNATURE.....	5
2 STATEMENT OF COMPLIANCE	6
3 CLIENT INFORMATION	8
3.1 APPLICANT INFORMATION	8
3.2 MANUFACTURER INFORMATION	8
4 EQUIPMENT UNDER TEST (EUT) AND ANCILLARY EQUIPMENT (AE).....	9
4.1 ABOUT EUT	9
4.2 INTERNAL IDENTIFICATION OF EUT USED DURING THE TEST	9
4.3 INTERNAL IDENTIFICATION OF AE USED DURING THE TEST	9
5 TEST METHODOLOGY	11
5.1 APPLICABLE LIMIT REGULATIONS	11
5.2 APPLICABLE MEASUREMENT STANDARDS.....	11
6 SPECIFIC ABSORPTION RATE (SAR).....	12
6.1 INTRODUCTION.....	12
6.2 SAR DEFINITION.....	12
7 TISSUE SIMULATING LIQUIDS	13
7.1 TARGETS FOR TISSUE SIMULATING LIQUID	13
7.2 DIELECTRIC PERFORMANCE	13
8 SYSTEM VERIFICATION	18
8.1 SYSTEM SETUP.....	18
8.2 SYSTEM VERIFICATION.....	19
9 MEASUREMENT PROCEDURES	20
9.1 TESTS TO BE PERFORMED	20
9.2 GENERAL MEASUREMENT PROCEDURE.....	22
9.3 WCDMA MEASUREMENT PROCEDURES FOR SAR	23
9.4 SAR MEASUREMENT FOR LTE.....	24
9.5 BLUETOOTH & WI-FI MEASUREMENT PROCEDURES FOR SAR	26
9.6 POWER DRIFT.....	26
10 AREA SCAN BASED 1-G SAR.....	27
10.1 REQUIREMENT OF KDB.....	27
10.2 FAST SAR ALGORITHMS	27
11 CONDUCTED OUTPUT POWER.....	28

11.1 GSM MEASUREMENT RESULT	28
11.2 WCDMA MEASUREMENT RESULT.....	31
11.3 LTE MEASUREMENT RESULT	33
11.4 WI-FI AND BT MEASUREMENT RESULT	47
12 SIMULTANEOUS TX SAR CONSIDERATIONS.....	49
12.1 INTRODUCTION.....	49
12.2 TRANSMIT ANTENNA SEPARATION DISTANCES	49
12.3 SAR MEASUREMENT POSITIONS	50
12.4 STANDALONE SAR TEST EXCLUSION CONSIDERATIONS	50
13 EVALUATION OF SIMULTANEOUS.....	51
14 SAR TEST RESULT	53
14.1 SAR RESULTS FOR FAST SAR.....	54
14.2 SAR RESULTS FOR STANDARD PROCEDURE	63
15 SAR MEASUREMENT VARIABILITY.....	67
16 MEASUREMENT UNCERTAINTY	69
16.1 MEASUREMENT UNCERTAINTY FOR NORMAL SAR TESTS (300MHZ~3GHZ)	69
16.2 MEASUREMENT UNCERTAINTY FOR NORMAL SAR TESTS (3~6GHZ)	70
16.3 MEASUREMENT UNCERTAINTY FOR FAST SAR TESTS (300MHZ~3GHZ)	71
16.4 MEASUREMENT UNCERTAINTY FOR FAST SAR TESTS (3~6GHZ).....	72
17 MAIN TEST INSTRUMENTS.....	73
ANNEX A GRAPH RESULTS.....	74
ANNEX B SYSTEM VERIFICATION RESULTS	106
ANNEX D POSITION OF THE WIRELESS DEVICE IN RELATION TO THE PHANTOM	121
ANNEX E EQUIVALENT MEDIA RECIPES	124
ANNEX F SYSTEM VALIDATION	125
ANNEX G PROBE CALIBRATION CERTIFICATE.....	126
ANNEX H DIPOLE CALIBRATION CERTIFICATE	137
ANNEX I SENSOR TRIGGERING DATA SUMMARY.....	169
ANNEX J ACCREDITATION CERTIFICATE.....	172

1 Test Laboratory

1.1 Testing Location

Company Name:	CTTL(Shouxiang)
Address:	No. 51 Shouxiang Science Building, Xueyuan Road, Haidian District, Beijing, P. R. China100191

1.2 Testing Environment

Temperature:	18°C~25°C,
Relative humidity:	30%~ 70%
Ground system resistance:	< 0.5 Ω
Ambient noise & Reflection:	< 0.012 W/kg

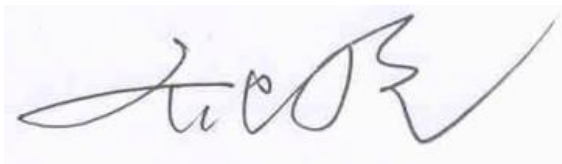
1.3 Project Data

Project Leader:	Qi Dianyuan
Test Engineer:	Lin Xiaojun
Testing Start Date:	July 14, 2017
Testing End Date:	July 23, 2017

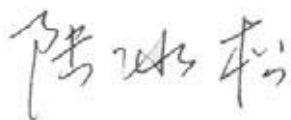
1.4 Signature



Lin Xiaojun
(Prepared this test report)



Qi Dianyuan
(Reviewed this test report)



Lu Bingsong
Deputy Director of the laboratory
(Approved this test report)

2 Statement of Compliance

The maximum results of SAR found during testing for Lenovo PC HK Limited Portable Tablet Computer Lenovo TB-7504X are as follows:

Table 2.1: Highest Reported SAR (1g)

Exposure Configuration	Technology Band	Highest Reported SAR 1g(W/kg)	Equipment Class
Head	GSM 850	0.31	PCE
	PCS 1900	0.06	
	UMTS FDD 5	0.32	
	UMTS FDD 2	0.11	
	LTE Band 2	0.09	
	LTE Band 7	0.07	
	LTE Band 38	0.02	
	WLAN 2.4 GHz	0.89	DTS
Body	GSM 850	1.19	PCE
	PCS 1900	0.74	
	UMTS FDD 5	1.19	
	UMTS FDD 2	1.19	
	LTE Band 2	1.16	
	LTE Band 7	1.16	
	LTE Band 38	0.97	
	WLAN 2.4 GHz	0.63	DTS

The SAR values found for the Mobile Phone are below the maximum recommended levels of 1.6 W/Kg as averaged over any 1g tissue according to the ANSI C95.1-1992.

For body SAR, this device has been tested with 0 or 7 or 15mm per KDB 616217 and meets FCC RF exposure guidelines. (See the detail of test distance from annex I)

The EUT battery must be fully charged and checked periodically during the test to ascertain uniform power output.

The measurement together with the test system set-up is described in annex C of this test report. A detailed description of the equipment under test can be found in chapter 4 of this test report. The highest reported SAR value is obtained at the case of **(Table 2.1)**, and the values are: **1.19 W/kg(1g)**.

Table 2.2: The sum of reported SAR values for main antenna and WiFi

	Position	Main antenna band	Main antenna	WiFi	Sum	Distance (mm)	Ratio
Maximum reported SAR value for Head	Right hand, Touch cheek	UMTS FDD 5	0.32	0.89	1.21	/	/
Maximum reported SAR value for Body	Left edge with 0mm	GSM 850	1.19	0.63	1.82^[1]	142.87	0.02
		UMTS FDD 5	1.19		1.82^[1]	117.64	0.02
		LTE Band 7	1.16		1.79^[1]	145.24	0.02

[1] – According to the KDB 447498 D01, when the sum of SAR is larger than the limit, SAR test exclusion is determined by the SAR to peak location separation ratio. The ratio is determined by $(SAR1 + SAR2)^{1.5}/R_i$, rounded to two decimal digits, and must be ≤ 0.04 for all antenna pairs in the configuration to qualify for 1-g SAR test exclusion.

Table 2.3: The sum of reported SAR values for main antenna and BT

	Position	Main antenna	BT	Sum
Maximum reported SAR value for Head	Right hand, Touch cheek	0.32	0.17 ^[1]	0.49
Maximum reported SAR value for Body	Left edge with 0mm	1.19	0.17 ^[1]	1.36

[1] - Estimated SAR for Bluetooth (see the table 13.3)

According to the above tables, the highest sum of reported SAR values is **1.82 W/kg (1g)**. The detail for simultaneous transmission consideration is described in chapter 13.



3 Client Information

3.1 Applicant Information

Company Name:	Lenovo(Shanghai) Electronics Technology Co., Ltd.
Address/Post:	NO.68 BUILDING, 199 FENJU RD, Pilot Free Trade Zone, 200131, China
City:	/
Postal Code:	200131
Country:	China
Contact Person:	Spring Zhou
E-mail:	zhoucb1@lenovo.com
Telephone:	+86-21-50504500-8281
Fax:	+86-21-50807240

3.2 Manufacturer Information

Company Name:	Lenovo PC HK Limited
Address/Post:	23/F, Lincoln House, Taikoo Place 979 King's Road, Quarry Bay, Hong Kong
City:	Hong Kong
Postal Code:	/
Country:	China
Contact Person:	Joanna Yu
E-mail:	yujia8@lenovo.com
Telephone:	+86-21-50504500-8281
Fax:	+86-21-50807240

4 Equipment Under Test (EUT) and Ancillary Equipment (AE)

4.1 About EUT

Description:	Portable Tablet Computer
Model name:	Lenovo TB-7504X
Operating mode(s):	GSM 850/900/1800/1900, UMTS FDD 1/2/5/8, BT, Wi-Fi LTE Band 1/2/3/7/8/20/38/40
Tested Tx Frequency:	825 – 848.8 MHz (GSM 850)
	1850.2 – 1910 MHz (GSM 1900)
	826.4–846.6 MHz (WCDMA 850 Band V)
	1852.4–1907.6 MHz (WCDMA1900 Band II)
	1860 – 1900 MHz (LTE Band 2)
	2502.5 – 2567.5 MHz (LTE Band 7)
	2570 – 2620 MHz (LTE Band 38)
	2412 – 2462 MHz (Wi-Fi 2.4G)
GPRS/EGPRS Multislot Class:	12
GPRS capability Class:	B
Test device Production information:	Production unit
Device type:	Portable device
Antenna type:	Integrated antenna
Hotspot mode:	Support
Product Dimension:	L: 193mm W: 98.7mm overall diagonal: 216.8mm

4.2 Internal Identification of EUT used during the test

EUT ID*	IMEI	HW	SW Version
EUT1	HA0TP1B0	Lenovo Tablet TB-7504X	TB-7504X_RF01_170712
EUT2	HA0TPH2M	Lenovo Tablet TB-7504X	TB-7504X_RF01_170712
EUT3	HA0TPSWQ	Lenovo Tablet TB-7504X	TB-7504X_RF01_170712
EUT4	HA0TRBDZ	Lenovo Tablet TB-7504X	TB-7504X_RF01_170712
EUT5	HA0TWTS7	Lenovo Tablet TB-7504X	TB-7504X_RF01_170712
EUT6	HA0TPFY6	Lenovo Tablet TB-7504X	TB-7504X_RF01_170712
EUT7	HA0TY83B	Lenovo Tablet TB-7504X	TB-7504X_RF01_170712

*EUT ID: is used to identify the test sample in the lab internally.

Note: It is performed to test SAR with the EUT1&2&3&4&5 and conducted power with the EUT6&7.

4.3 Internal Identification of AE used during the test

AE ID*	Description	Model	SN	Manufacturer
AE1	Battery	L16D1P33	/	Sunwoda Electronic Co.,Ltd
AE2	Battery	L16D1P33	/	SCUD(FUJIAN) Electronic Co.,Ltd



There are five kinds of combination modes to be tested and the detail information is as follows:

SKU1			SKU2		
Material description	Model	Supplier	Material description	Model	Supplier
LPDDR3 Emcp	KMQX10013M-B419	Samsung	LPDDR3 Emcp	H9TQ17ABJTBCUR-KUM	Hynix
Battery	Sunwoda+ATL(3.85V 3500mAh)	Sunwoda	Battery	SCUD+Veken(3.85V 3500mAh)	SCUD
speakerBox1	1511	Midi	speakerBox2	1511	Xichun
LCM	TLCM TV070HDM-TL8 White BOE NEG CG	BOE	LCM	TLCM TV070HDM-TL9 BOE NEG CG	BOE
Camera_Back	L545A20	Oflim	Camera_Back	L545A20	Oflim
Camera_Front	BLX2590W-P98997AA1-F V1.0	brodsands	Camera_Front	G7P2-P98997AA1FF	Kingcone
SKU3			SKU4		
Material description	Model	Supplier	Material description	Model	Supplier
LPDDR3 Emcp	KMQX10013M-B419	Samsung	LPDDR3 Emcp	KMFE60012M-B214	Samsung
Battery	SCUD+Veken(3.85V 3500mAh)	SCUD	Battery	Sunwoda+ATL(3.85V 3500mAh)	Sunwoda
speakerBox2	1511	Xichun	speakerBox2	1511	Midi
LCM	TLCM TV070HDM-TL9 BOE NEG CG	BOE	LCM	TLCM TV070HDM-TL8 White BOE NEG CG	BOE
Camera_Back	L545A20	Oflim	Camera_Back	L545A20	Oflim
Camera_Front	G7P2-P98997AA1FF	Kingcone	Camera_Front	BLX2590W-P98997AA1-F V1.0	brodsands
SKU5					
Material description	Model	Supplier			
LPDDR3 Emcp	KMGX6001BM-B514	Samsung			
Battery	Sunwoda+ATL(3.85V 3500mAh)	Sunwoda			
speakerBox2	1511	Midi			
LCM	TLCM TV070HDM-TL8 White BOE NEG CG	BOE			
Camera_Back	L545A20	Oflim			
Camera_Front	BLX2590W-P98997AA1-F V1.0	brodsands			

We'll perform the SAR measurement with SKU1 and retest on highest value point with SKU3 and SKU5.

5 TEST METHODOLOGY

5.1 Applicable Limit Regulations

ANSI C95.1–1992:IEEE Standard for Safety Levels with Respect to Human Exposure to Radio Frequency Electromagnetic Fields, 3 kHz to 300 GHz.

It specifies the maximum exposure limit of **1.6 W/kg** as averaged over any 1 gram of tissue for portable devices being used within 20 cm of the user in the uncontrolled environment.

5.2 Applicable Measurement Standards

IEEE 1528–2013: Recommended Practice for Determining the Peak Spatial-Average Specific Absorption Rate (SAR) in the Human Head from Wireless Communications Devices: Measurement Techniques.

KDB 616217 D04 SAR for laptop and tablets v01r02 SAR Evaluation Considerations for Laptop, Notebook, Notebook and Tablet Computers.

KDB 447498 D01: General RF Exposure Guidance v06: Mobile and Portable Devices RF Exposure Procedures and Equipment Authorization Policies.

KDB 648474 D04 Handset SAR v01r03: SAR Evaluation Considerations for Wireless Handsets.

KDB 941225 D01 SAR test for 3G devices v03r01: SAR Measurement Procedures for 3G Devices

KDB 941225 D05 SAR for LTE Devices v02r05: SAR Evaluation Considerations for LTE Devices

KDB 941225 D06 Hotspot Mode SAR v02r01: SAR Evaluation Procedures for Portable Devices with Wireless Router Capabilities

KDB 248227 D01 802.11 Wi-Fi SAR v02r02: SAR GUIDANCE FOR IEEE 802.11 (Wi-Fi) TRANSMITTERS

KDB 865664 D01 SAR measurement 100 MHz to 6 GHz v01r04: SAR Measurement Requirements for 100 MHz to 6 GHz.

KDB 865664 D02 RF Exposure Reporting v01r02: RF Exposure Compliance Reporting and Documentation Considerations

6 Specific Absorption Rate (SAR)

6.1 Introduction

SAR is related to the rate at which energy is absorbed per unit mass in an object exposed to a radio field. The SAR distribution in a biological body is complicated and is usually carried out by experimental techniques or numerical modeling. The standard recommends limits for two tiers of groups, occupational/controlled and general population/uncontrolled, based on a person's awareness and ability to exercise control over his or her exposure. In general, occupational/controlled exposure limits are higher than the limits for general population/uncontrolled.

6.2 SAR Definition

The SAR definition is the time derivative (rate) of the incremental energy (dW) absorbed by (dissipated in) an incremental mass (dm) contained in a volume element (dv) of a given density (ρ). The equation description is as below:

$$SAR = \frac{d}{dt} \left(\frac{dW}{dm} \right) = \frac{d}{dt} \left(\frac{dW}{\rho dv} \right)$$

SAR is expressed in units of Watts per kilogram (W/kg)

SAR measurement can be either related to the temperature elevation in tissue by

$$SAR = c \left(\frac{\delta T}{\delta t} \right)$$

Where: C is the specific heat capacity, δT is the temperature rise and δt is the exposure duration, or related to the electrical field in the tissue by

$$SAR = \frac{\sigma |E|^2}{\rho}$$

Where: σ is the conductivity of the tissue, ρ is the mass density of tissue and E is the RMS electrical field strength.

However for evaluating SAR of low power transmitter, electrical field measurement is typically applied.

7 Tissue Simulating Liquids

7.1 Targets for tissue simulating liquid

Table 7.1: Targets for tissue simulating liquid

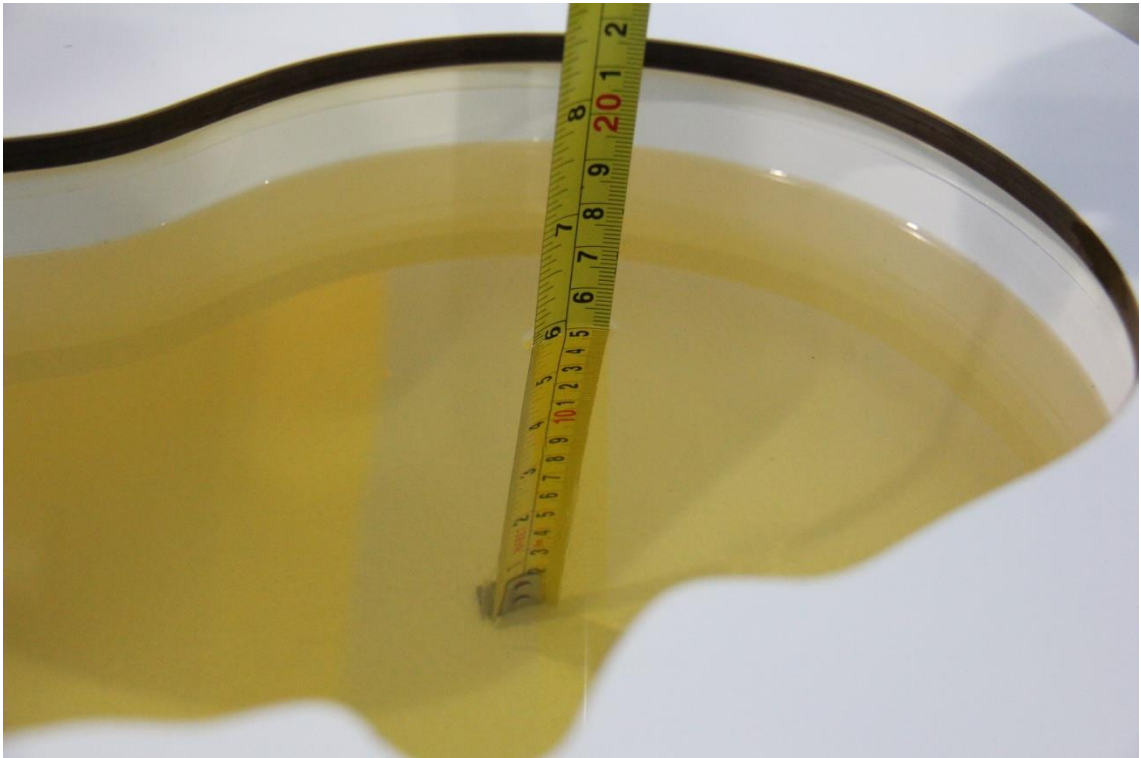
Frequency(MHz)	Liquid Type	Conductivity(σ)	$\pm 5\%$ Range	Permittivity(ϵ)	$\pm 5\%$ Range
835	Head	0.90	0.86~0.95	41.5	39.4~43.6
835	Body	0.97	0.92~1.02	55.2	52.4~58.0
1900	Head	1.40	1.33~1.47	40.0	38.0~42.0
1900	Body	1.52	1.44~1.60	53.3	50.6~56.0
2450	Head	1.80	1.71~1.89	39.2	37.2~41.2
2450	Body	1.95	1.85~2.05	52.7	50.1~55.3
2600	Head	1.96	1.86~2.06	39.01	37.1~41.0
2600	Body	2.16	2.05~2.27	52.5	49.9~55.1

7.2 Dielectric Performance

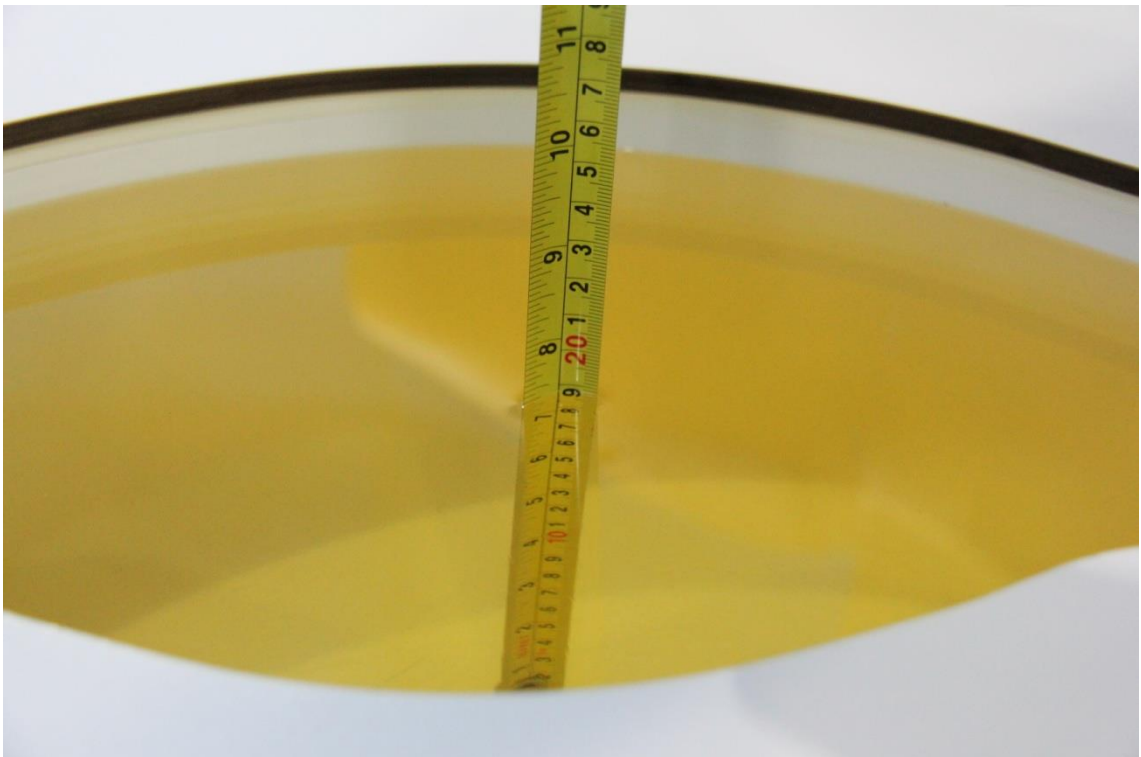
Table 7.2: Dielectric Performance of Tissue Simulating Liquid

Measurement Date (yyyy-mm-dd)	Type	Frequency	Permittivity ϵ	Drift (%)	Conductivity σ (S/m)	Drift (%)
2017-7-14	Head	835 MHz	42.21	1.71	0.916	1.78
	Body	835 MHz	54.05	-2.08	0.988	1.86
2017-7-15	Head	1900 MHz	40.53	1.33	1.417	1.21
	Body	1900 MHz	52.28	-1.91	1.528	0.53
2017-7-16	Head	2450 MHz	39.37	0.43	1.849	2.72
	Body	2450 MHz	52.27	-0.82	1.928	-1.13
2017-7-23	Head	2600 MHz	39.16	0.38	1.968	0.41
	Body	2600 MHz	52.14	-0.69	2.162	0.09

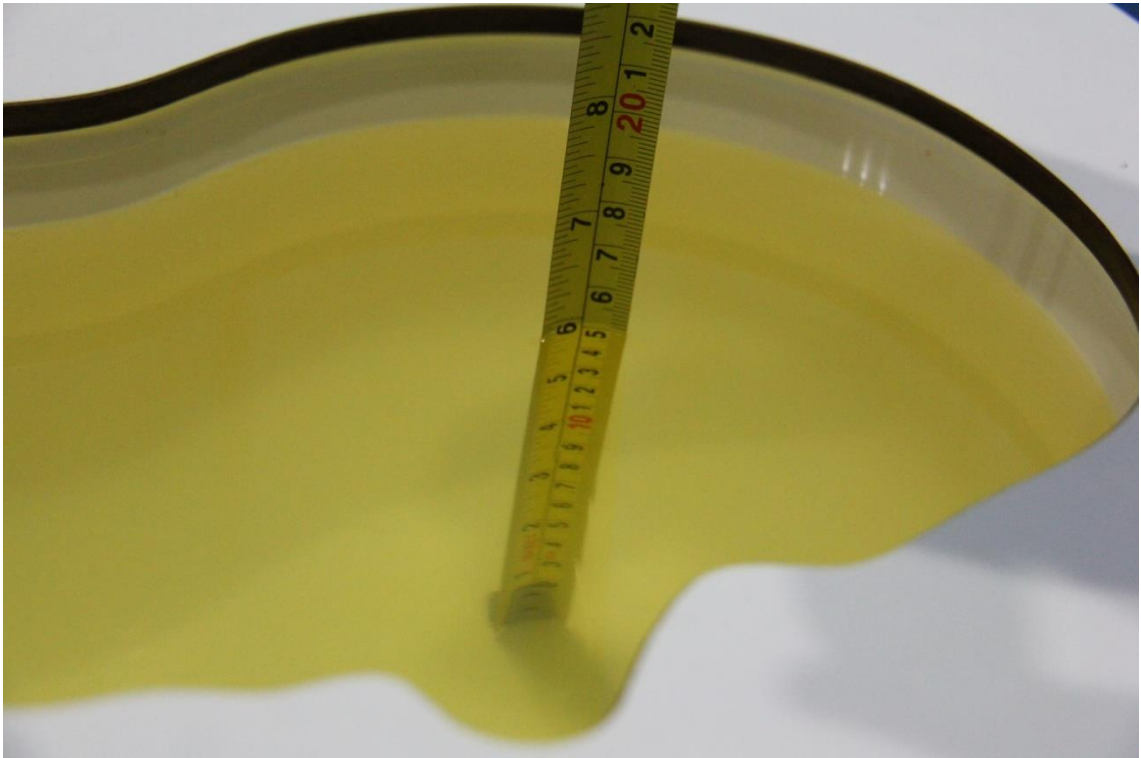
Note: The liquid temperature is 22.0°C



Picture 7-1 Liquid depth in the Head Phantom (835 MHz)



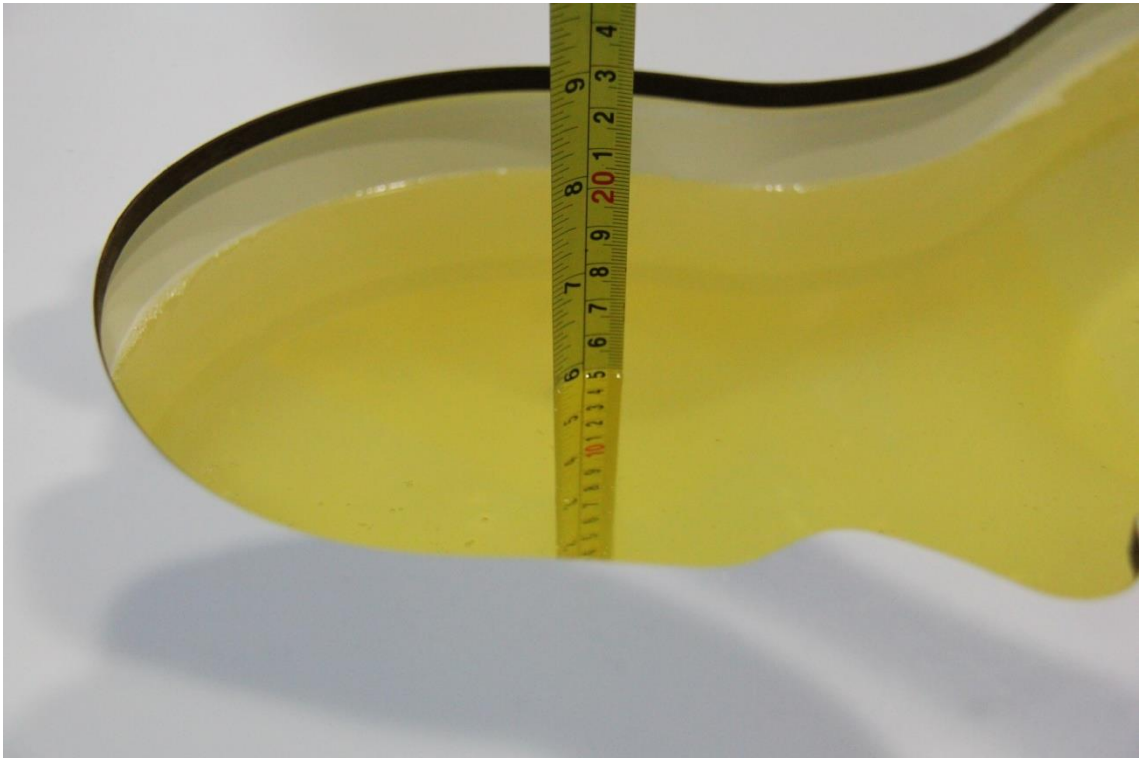
Picture 7-2 Liquid depth in the Flat Phantom (835 MHz)



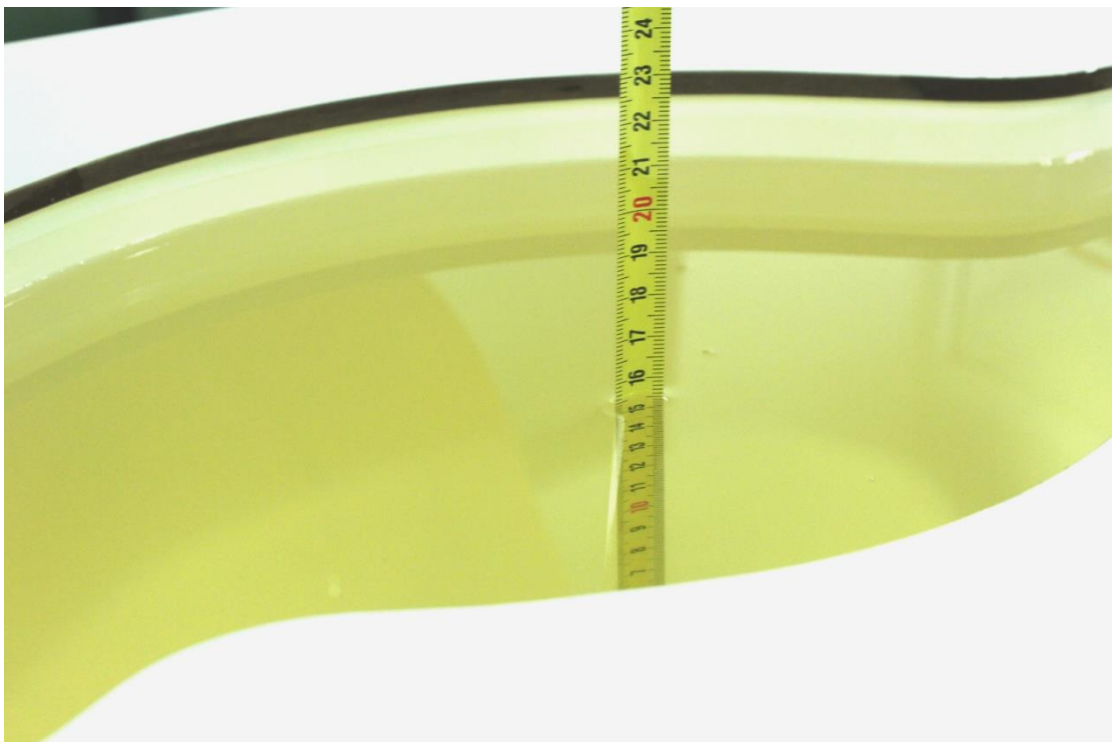
Picture 7-3 Liquid depth in the Head Phantom (1900 MHz)



Picture 7-4 Liquid depth in the Flat Phantom (1900MHz)



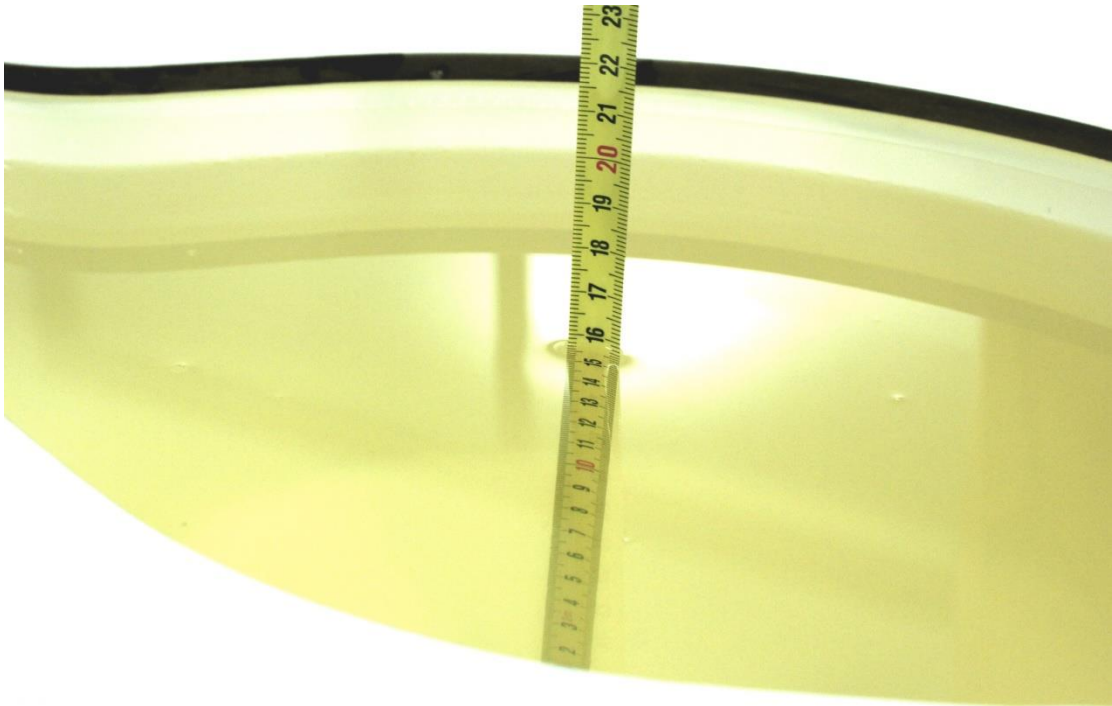
Picture 7-5 Liquid depth in the Head Phantom (2450MHz)



Picture 7-6 Liquid depth in the Flat Phantom (2450MHz)



Picture 7-7 Liquid depth in the Head Phantom (2600 MHz Head)

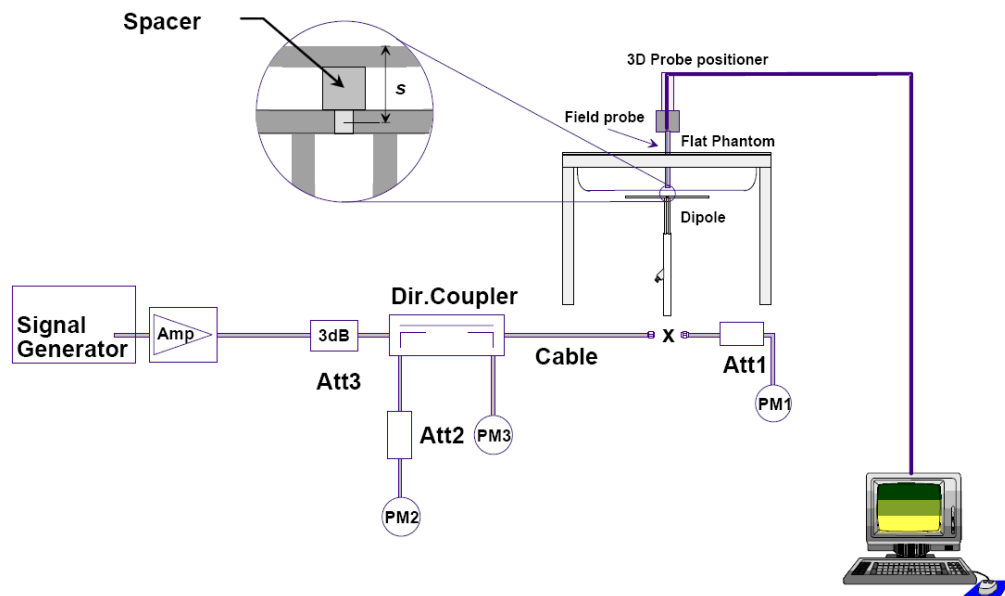


Picture 7-8 Liquid depth in the Flat Phantom (2600MHz)

8 System verification

8.1 System Setup

In the simplified setup for system evaluation, the DUT is replaced by a calibrated dipole and the power source is replaced by a continuous wave that comes from a signal generator. The calibrated dipole must be placed beneath the flat phantom section of the SAM twin phantom with the correct distance holder. The distance holder should touch the phantom surface with a light pressure at the reference marking and be oriented parallel to the long side of the phantom. The equipment setup is shown below:



Picture 8.1 System Setup for System Evaluation



Picture 8.2 Photo of Dipole Setup

8.2 System Verification

SAR system verification is required to confirm measurement accuracy, according to the tissue dielectric media, probe calibration points and other system operating parameters required for measuring the SAR of a test device. The system verification must be performed for each frequency band and within the valid range of each probe calibration point required for testing the device.

The system verification results are required that the area scan estimated 1-g SAR is within 3% of the zoom scan 1-g SAR. The details are presented in annex B.

Table 8.1: System Verification of Head

Measurement Date (yyyy-mm-dd)	Frequency	Target value (W/kg)		Measured value(W/kg)		Deviation	
		10 g Average	1 g Average	10 g Average	1 g Average	10 g Average	1 g Average
2017-1-13	835 MHz	6.18	9.44	6.16	9.28	-0.32%	-1.69%
2017-1-15	1900 MHz	21.2	40.7	20.94	40.44	-1.23%	-0.64%
2017-1-16	2450 MHz	24.6	52.8	24.56	52.44	-0.16%	-0.68%
2017-1-17	2600 MHz	25.2	56.7	25.48	56.36	1.11%	-0.60%

Table 8.2: System Verification of Body

Measurement Date (yyyy-mm-dd)	Frequency	Target value (W/kg)		Measured value (W/kg)		Deviation	
		10 g Average	1 g Average	10 g Average	1 g Average	10 g Average	1 g Average
2017-1-13	835 MHz	6.36	9.69	6.32	9.60	-0.63%	-0.93%
2017-1-15	1900 MHz	21.3	40.1	20.96	41.24	-1.60%	2.84%
2017-1-16	2450 MHz	24.1	51.2	24.36	52.84	1.08%	3.20%
2017-1-17	2600 MHz	24.8	55.3	24.32	55.72	-1.94%	0.76%

9 Measurement Procedures

9.1 Tests to be performed

In order to determine the highest value of the peak spatial-average SAR of a handset, all device positions, configurations and operational modes shall be tested for each frequency band according to steps 1 to 3 below. A flowchart of the test process is shown in picture 9.1.

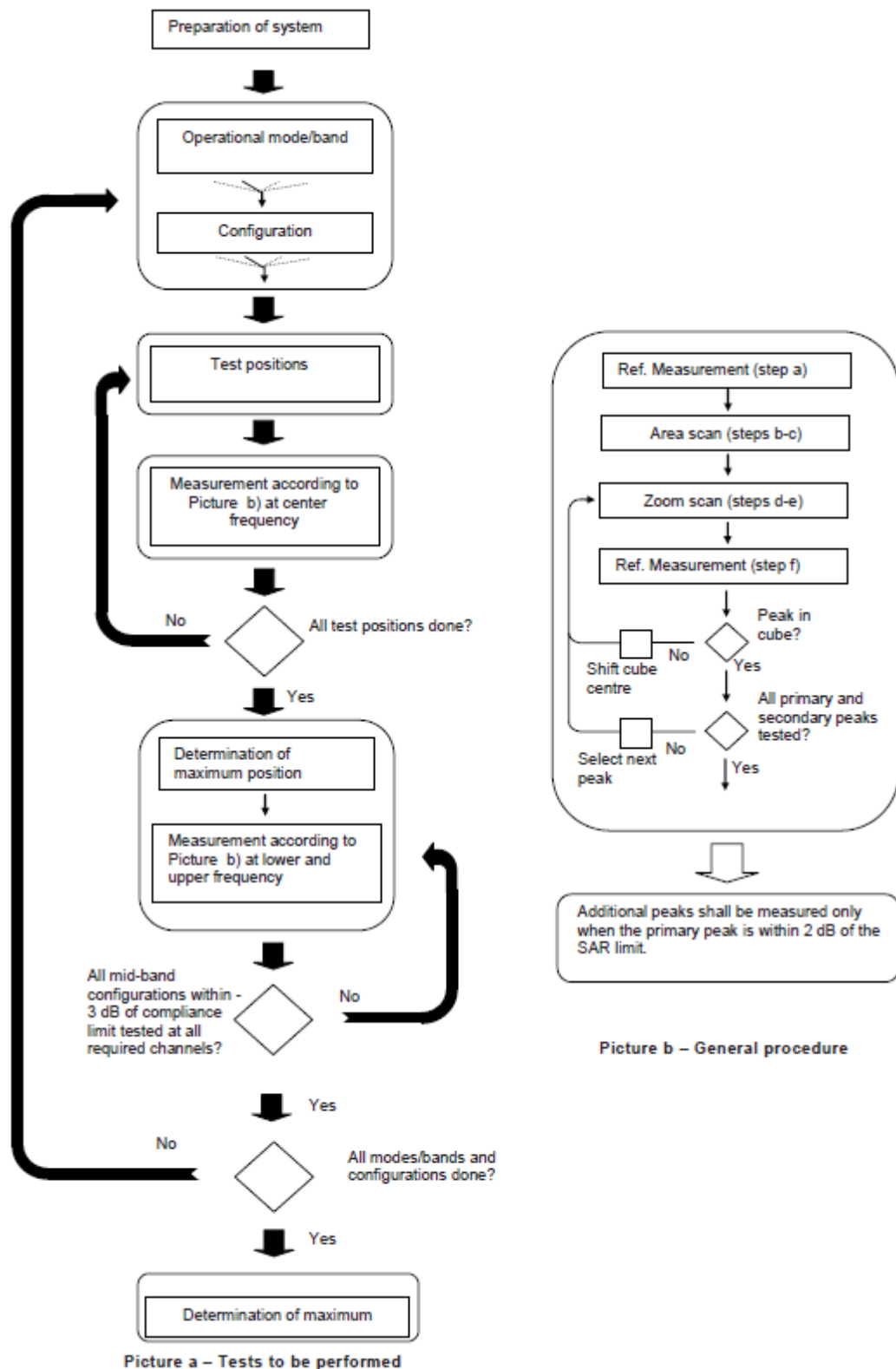
Step 1: The tests described in 9.2 shall be performed at the channel that is closest to the centre of the transmit frequency band (f_c) for:

- a) all device positions (cheek and tilt, for both left and right sides of the SAM phantom, as described in annex D),
- b) all configurations for each device position in a), e.g., antenna extended and retracted, and
- c) all operational modes, e.g., analogue and digital, for each device position in a) and configuration in b) in each frequency band.

If more than three frequencies need to be tested according to 11.1 (i.e., $N_c > 3$), then all frequencies, configurations and modes shall be tested for all of the above test conditions.

Step 2: For the condition providing highest peak spatial-average SAR determined in Step 1, perform all tests described in 9.2 at all other test frequencies, i.e., lowest and highest frequencies. In addition, for all other conditions (device position, configuration and operational mode) where the peak spatial-average SAR value determined in Step 1 is within 3 dB of the applicable SAR limit, it is recommended that all other test frequencies shall be tested as well.

Step 3: Examine all data to determine the highest value of the peak spatial-average SAR found in Steps 1 to 2.



Picture 9.1 Block diagram of the tests to be performed

9.2 General Measurement Procedure

The area and zoom scan resolutions specified in the table below must be applied to the SAR measurements and fully documented in SAR reports to qualify for TCB approval. Probe boundary effect error compensation is required for measurements with the probe tip closer than half a probe tip diameter to the phantom surface. Both the probe tip diameter and sensor offset distance must satisfy measurement protocols; to ensure probe boundary effect errors are minimized and the higher fields closest to the phantom surface can be correctly measured and extrapolated to the phantom surface for computing 1-g SAR. Tolerances of the post-processing algorithms must be verified by the test laboratory for the scan resolutions used in the SAR measurements, according to the reference distribution functions specified in IEEE Std 1528-2003. The results should be documented as part of the system validation records and may be requested to support test results when all the measurement parameters in the following table are not satisfied.

		≤ 3 GHz	> 3 GHz	
Maximum distance from closest measurement point (geometric center of probe sensors) to phantom surface		5 ± 1 mm	$\frac{1}{2} \cdot \delta \cdot \ln(2) \pm 0.5$ mm	
Maximum probe angle from probe axis to phantom surface normal at the measurement location		$30^\circ \pm 1^\circ$	$20^\circ \pm 1^\circ$	
Maximum area scan spatial resolution: Δx_{Area} , Δy_{Area}		≤ 2 GHz: ≤ 15 mm 2 – 3 GHz: ≤ 12 mm	3 – 4 GHz: ≤ 12 mm 4 – 6 GHz: ≤ 10 mm	
		When the x or y dimension of the test device, in the measurement plane orientation, is smaller than the above, the measurement resolution must be \leq the corresponding x or y dimension of the test device with at least one measurement point on the test device.		
Maximum zoom scan spatial resolution: Δx_{Zoom} , Δy_{Zoom}		≤ 2 GHz: ≤ 8 mm 2 – 3 GHz: ≤ 5 mm*	3 – 4 GHz: ≤ 5 mm* 4 – 6 GHz: ≤ 4 mm*	
Maximum zoom scan spatial resolution, normal to phantom surface	uniform grid: $\Delta z_{Zoom}(n)$	≤ 5 mm	3 – 4 GHz: ≤ 4 mm 4 – 5 GHz: ≤ 3 mm 5 – 6 GHz: ≤ 2 mm	
	graded grid	$\Delta z_{Zoom}(1)$: between 1 st two points closest to phantom surface	≤ 4 mm	3 – 4 GHz: ≤ 3 mm 4 – 5 GHz: ≤ 2.5 mm 5 – 6 GHz: ≤ 2 mm
		$\Delta z_{Zoom}(n>1)$: between subsequent points	$\leq 1.5 \cdot \Delta z_{Zoom}(n-1)$	
Minimum zoom scan volume	x, y, z	≥ 30 mm	3 – 4 GHz: ≥ 28 mm 4 – 5 GHz: ≥ 25 mm 5 – 6 GHz: ≥ 22 mm	
<p>Note: δ is the penetration depth of a plane-wave at normal incidence to the tissue medium; see draft standard IEEE P1528-2011 for details.</p> <p>* When zoom scan is required and the <i>reported</i> SAR from the area scan based 1-g SAR estimation procedures of KDB 447498 is ≤ 1.4 W/kg, ≤ 8 mm, ≤ 7 mm and ≤ 5 mm zoom scan resolution may be applied, respectively, for 2 GHz to 3 GHz, 3 GHz to 4 GHz and 4 GHz to 6 GHz.</p>				

9.3 WCDMA Measurement Procedures for SAR

The following procedures are applicable to WCDMA handsets operating under 3GPP Release99, Release 5 and Release 6. The default test configuration is to measure SAR with an established radio link between the DUT and a communication test set using a 12.2kbps RMC (reference measurement channel) configured in Test Loop Mode 1. SAR is selectively confirmed for other physical channel configurations (DPCCH & DPDCH_n), HSDPA and HSPA (HSUPA/HSDPA) modes according to output power, exposure conditions and device operating capabilities. Both uplink and downlink should be configured with the same RMC or AMR, when required. SAR for Release 5 HSDPA and Release 6 HSPA are measured using the applicable FRC (fixed reference channel) and E-DCH reference channel configurations. Maximum output power is verified according to applicable versions of 3GPP TS 34.121 and SAR must be measured according to these maximum output conditions. When Maximum Power Reduction (MPR) is not implemented according to Cubic Metric (CM) requirements for Release 6 HSPA, the following procedures do not apply.

For Release 5 HSDPA Data Devices:

Sub-test	β_c	β_d	β_d (SF)	β_c / β_d	β_{hs}	CM/dB
1	2/15	15/15	64	2/15	4/15	0.0
2	12/15	15/15	64	12/15	24/25	1.0
3	15/15	8/15	64	15/8	30/15	1.5
4	15/15	4/15	64	15/4	30/15	1.5

For Release 6 HSPA Data Devices

Sub-test	β_c	β_d	β_d (SF)	β_c / β_d	β_{hs}	β_{ec}	β_{ed}	β_{ed} (SF)	β_{ed} (codes)	CM (dB)	MPR (dB)	AG Index	E-TFCI
1	11/15	15/15	64	11/15	22/15	209/225	1039/225	4	1	1.5	1.5	20	75
2	6/15	15/15	64	6/15	12/15	12/15	12/15	4	1	1.5	1.5	12	67
3	15/15	9/15	64	15/9	30/15	30/15	$\beta_{ed1}:47/15$ $\beta_{ed2}:47/15$	4	2	1.5	1.5	15	92
4	2/15	15/15	64	2/15	4/15	4/15	56/75	4	1	1.5	1.5	17	71
5	15/15	15/15	64	15/15	24/15	30/15	134/15	4	1	1.5	1.5	21	81

Rel.8 DC-HSDPA (Cat 24)

SAR test exclusion for Rel.8 DC-HSDPA must satisfy the SAR test exclusion requirements of Rel.5 HSDPA. SAR test exclusion for DC-HSDPA devices is determined by power measurements according to the H-Set 12, Fixed Reference Channel (FRC) configuration in Table C.8.1.12 of 3GPP TS 34.121-1. A primary and a secondary serving HS-DSCH Cell are required to perform the power measurement and for the results to qualify for SAR test exclusion.

9.4 SAR Measurement for LTE

SAR tests for LTE are performed with a base station simulator, Rohde & Schwarz CMW500. Closed loop power control was used so the UE transmits with maximum output power during SAR testing. All powers were measured with the CMW 500.

It is performed for conducted power and SAR based on the KDB941225 D05.

SAR is evaluated separately according to the following procedures for the different test positions in each exposure condition – head, body, body-worn accessories and other use conditions. The procedures in the following subsections are applied separately to test each LTE frequency band.

1) QPSK with 1 RB allocation

Start with the largest channel bandwidth and measure SAR for QPSK with 1 RB allocation, using the RB offset and required test channel combination with the highest maximum output power among RB offsets at the upper edge, middle and lower edge of each required test channel. When the reported SAR is ≤ 0.8 W/kg, testing of the remaining RB offset configurations and required test channels is not required for 1 RB allocation; otherwise, SAR is required for the remaining required test channels and only for the RB offset configuration with the highest output power for that channel. When the reported SAR of a required test channel is > 1.45 W/kg, SAR is required for all three RB offset configurations for that required test channel.

2) QPSK with 50% RB allocation

The procedures required for 1 RB allocation in 1) are applied to measure the SAR for QPSK with 50% RB allocation.

3) QPSK with 100% RB allocation

For QPSK with 100% RB allocation, SAR is not required when the highest maximum output power for 100 % RB allocation is less than the highest maximum output power in 50% and 1 RB allocations and the highest reported SAR for 1 RB and 50% RB allocation in 1) and 2) are ≤ 0.8 W/kg. Otherwise, SAR is measured for the highest output power channel; and if the reported SAR is > 1.45 W/kg, the remaining required test channels must also be tested.

TDD test:

TDD testing is performed using guidance from FCC KDB 941225 D05 v02r05 and the SAR test guidance provided in April 2013 TCB works hop notes. TDD is tested at the highest duty factor using UL-DL configuration 0 with special subframe configuration 6 and applying the FDD LTE procedures in KDB 941225 D05 v02r05. SAR testing is performed using the extended cyclic prefix listed in 3GPP TS 36.211.

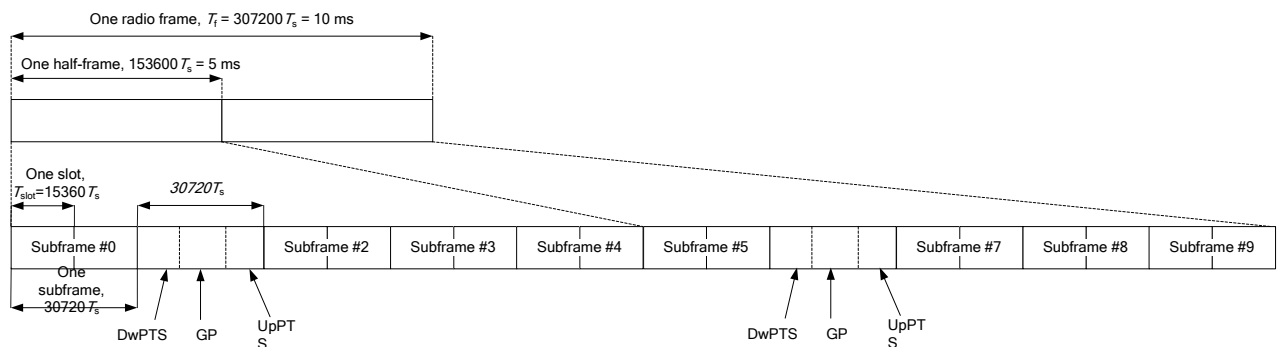


Figure 9.2: Frame structure type 2 (for 5 ms switch-point periodicity)