

# FCC SAR Test Report

Report No. : SA20210104W002  
Applicant : Lenovo (Shanghai) Electronics Technology Co., Ltd.  
Address : Section 304-305, Building No. 4, # 222, Meiyue Road, China (Shanghai) Pilot Free Trade Zone  
Product : Portable Tablet Computer  
FCC ID : O57TB7306F  
Brand : Lenovo  
Model No. : Lenovo TB-7306F  
Standards : FCC 47 CFR Part 2 (2.1093) / IEEE C95.1:1992 / IEEE 1528:2013  
KDB 865664 D01 v01r04 / KDB 865664 D02 v01r02  
KDB 248227 D01 v02r02 / KDB 447498 D01 v06  
KDB 648474 D04 v01r03  
Sample Received Date : Jan. 04, 2021  
Date of Testing : Jan. 20, 2021 ~ Jan. 23, 2021  
FCC Designation No. : CN1171

**CERTIFICATION:** The above equipment have been tested by **BV 7LAYERS COMMUNICATIONS TECHNOLOGY (SHENZHEN) CO. LTD.**, and found compliance with the requirement of the above standards. The test record, data evaluation & Equipment Under Test (EUT) configurations represented herein are true and accurate accounts of the measurements of the sample's SAR characteristics under the conditions specified in this report. It should not be reproduced except in full, without the written approval of our laboratory. The client should not use it to claim product certification, approval, or endorsement by A2LA or any government agencies.

Prepared By : Jerry Chen  
Jerry Chen / Engineer

Approved By : Luke Lu  
Luke Lu / Manager



This report is governed by, and incorporates by reference, CPS Conditions of Service as posted at the date of issuance of this report at <http://www.bureauveritas.com/home/about-us/our-business/cps/about-us/terms-conditions> and is intended for your exclusive use. Any copying or replication of this report to or for any other person or entity, or use of our name or trademark, is permitted only with our prior written permission. This report sets forth our findings solely with respect to the test samples identified herein. The results set forth in this report are not indicative or representative of the quality or characteristics of the lot from which a test sample was taken or any similar or identical product unless specifically and expressly noted. Our report includes all of the tests requested by you and the results thereof based upon the information that you provided to us. Measurement uncertainty is only provided upon request for accredited tests. You have 60 days from date of issuance of this report to notify us of any material error or omission caused by our negligence or if you require measurement uncertainty; provided, however, that such notice shall be in writing and shall specifically address the issue you wish to raise. A failure to raise such issue within the prescribed time shall constitute your unqualified acceptance of the completeness of this report, the tests conducted and the correctness of the report contents.

## Table of Contents

<b>Release Control Record .....</b>	<b>3</b>
<b>1. Summary of Maximum SAR Value .....</b>	<b>4</b>
<b>2. Description of Equipment Under Test .....</b>	<b>5</b>
<b>3. SAR Measurement System .....</b>	<b>6</b>
3.1 Definition of Specific Absorption Rate (SAR) .....	6
3.2 SPEAG DASY System .....	6
3.2.1 Robot.....	7
3.2.2 Probes.....	8
3.2.3 Data Acquisition Electronics (DAE) .....	8
3.2.4 Phantoms .....	9
3.2.5 Device Holder.....	10
3.2.6 System Validation Dipoles .....	10
3.2.7 Tissue Simulating Liquids.....	11
3.3 SAR System Verification .....	13
3.4 SAR Measurement Procedure .....	14
3.4.1 Area & Zoom Scan Procedure .....	14
3.4.2 Volume Scan Procedure.....	14
3.4.3 Power Drift Monitoring.....	15
3.4.4 Spatial Peak SAR Evaluation .....	15
3.4.5 SAR Averaged Methods .....	15
<b>4. SAR Measurement Evaluation .....</b>	<b>16</b>
4.1 EUT Configuration and Setting.....	16
4.2 EUT Testing Position .....	18
4.2.1 Head Exposure Conditions.....	18
4.2.2 Body-worn Accessory Exposure Conditions .....	20
4.2.3 Extremity Exposure Conditions .....	21
4.3 Tissue Verification .....	22
4.4 System Verification.....	22
4.5 Maximum Output Power.....	23
4.5.1 Maximum Conducted Power .....	23
4.5.2 Measured Conducted Power Result.....	24
4.6 SAR Testing Results .....	32
4.6.1 SAR Test Reduction Considerations .....	32
4.6.2 SAR Results for Head Exposure Condition .....	33
4.6.3 SAR Results for Body-worn Exposure Condition (Separation Distance is 1.0 cm Gap).....	33
4.6.4 SAR Results for Extremity Exposure Condition (Separation Distance is 0 cm Gap).....	34
4.6.5 SAR Measurement Variability.....	35
4.6.6 Simultaneous Multi-band Transmission Evaluation .....	36
<b>5. Calibration of Test Equipment.....</b>	<b>37</b>
<b>6. Measurement Uncertainty .....</b>	<b>38</b>
<b>7. Information on the Testing Laboratories .....</b>	<b>40</b>

- Appendix A. SAR Plots of System Verification**
- Appendix B. SAR Plots of SAR Measurement**
- Appendix C. Calibration Certificate for Probe and Dipole**
- Appendix D. Photographs of EUT and Setup**



**1. Summary of Maximum SAR Value**

Equipment Class	Mode	Highest Reported Head SAR <sub>1g</sub> (W/kg)	Highest Reported Body-worn SAR <sub>1g</sub> (1.0 cm Gap) (W/kg)	Highest Reported Extremity SAR <sub>10g</sub> (0 cm Gap) (W/kg)
DTS	2.4G WLAN	1.06	0.46	0.90
NII	5.2G WLAN	--	--	--
	5.3G WLAN	1.14	0.39	1.18
	5.6G WLAN	0.73	0.21	0.86
	5.8G WLAN	0.79	0.27	0.98
DSS	Bluetooth	0.29	0.06	0.23
Highest Simultaneous Transmission SAR		Head (W/kg)	Body-worn (W/kg)	Extremity (W/kg)
		1.43	0.45	1.41

**Note:**

- The SAR limit (**Head & Body: SAR<sub>1g</sub> 1.6 W/kg, Extremity: SAR<sub>10g</sub> 4.0 W/kg**) for general population / uncontrolled exposure is specified in FCC 47 CFR part 2 (2.1093) and ANSI/IEEE C95.1-1992.

## 2. Description of Equipment Under Test

<b>EUT Type</b>	Portable Tablet Computer
<b>FCC ID</b>	O57TB7306F <b>Error! Reference source not found.</b>
<b>Brand Name</b>	Lenovo
<b>Model Name</b>	Lenovo TB-7306F
<b>HW Version</b>	Lenovo Tablet TB-7306F
<b>SW Version</b>	TB-7306F_RF01_201229
<b>Tx Frequency Bands (Unit: MHz)</b>	WLAN : 2412 ~ 2462, 5180 ~ 5240, 5260 ~ 5320, 5500 ~ 5700, 5745 ~ 5825 Bluetooth : 2402 ~ 2480
<b>Uplink Modulations</b>	802.11b : DSSS 802.11a/g/n/ac : OFDM Bluetooth : GFSK, π/4-DQPSK, 8-DPSK, LE
<b>Maximum Tune-up Conducted Power (Unit: dBm)</b>	Please refer to section 4.5.1 of this report.
<b>Antenna Type</b>	WLAN: PIFA Antenna
<b>EUT Stage</b>	Identical Prototype

**Note:**

1. The above EUT information is declared by manufacturer and for more detailed features description please refers to the manufacturer's specifications or User's Manual.
2. This device Support power reduce on Head exposure condition, when the receiver is working the power reduce is activated;
3. There were Sample 1, 2 for this project, Sample 1 was full test, sample 2 verify the worst case;

SAMPLE	EUT CONFIGURATION INFORMATION
1	LCD Panel 1+Photo Camera 1+ Video Camera 1+CPU+EMMC1+ RAM 1+ BT/WLAN Module+ Battery 1
2	LCD Panel 2+Photo Camera 1+ Video Camera 2+CPU+EMMC1+ RAM 1+ BT/WLAN Module+ Battery 2

### 3. SAR Measurement System

#### 3.1 Definition of Specific Absorption Rate (SAR)

SAR is related to the rate at which energy is absorbed per unit mass in an object exposed to a radio field. The SAR distribution in a biological body is complicated and is usually carried out by experimental techniques or numerical modeling. The standard recommends limits for two tiers of groups, occupational/controlled and general population/uncontrolled, based on a person’s awareness and ability to exercise control over his or her exposure. In general, occupational/controlled exposure limits are higher than the limits for general population/uncontrolled.

The SAR definition is the time derivative (rate) of the incremental energy (dW) absorbed by (dissipated in) an incremental mass (dm) contained in a volume element (dv) of a given density (ρ). The equation description is as below:

$$SAR = \frac{d}{dt} \left( \frac{dW}{dm} \right) = \frac{d}{dt} \left( \frac{dW}{\rho dv} \right)$$

SAR is expressed in units of Watts per kilogram (W/kg)

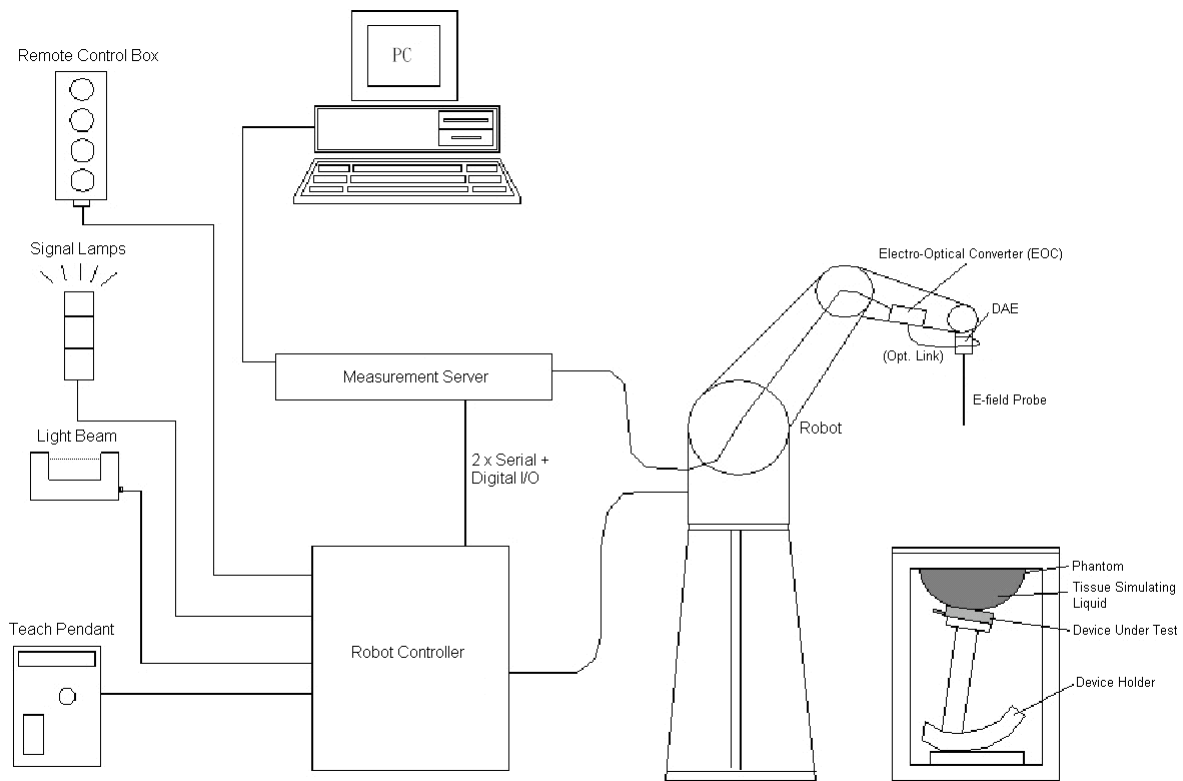
SAR measurement can be related to the electrical field in the tissue by

$$SAR = \frac{\sigma |E|^2}{\rho}$$

Where: σ is the conductivity of the tissue, ρ is the mass density of the tissue and E is the RMS electrical field strength.

#### 3.2 SPEAG DASY System

DASY system consists of high precision robot, probe alignment sensor, phantom, robot controller, controlled measurement server and near-field probe. The robot includes six axes that can move to the precision position of the DASY5 software defined. The DASY software can define the area that is detected by the probe. The robot is connected to controlled box. Controlled measurement server is connected to the controlled robot box. The DAE includes amplifier, signal multiplexing, AD converter, offset measurement and surface detection. It is connected to the Electro-optical coupler (ECO). The ECO performs the conversion form the optical into digital electric signal of the DAE and transfers data to the PC.



**Fig-3.1 DASY System Setup**

**3.2.1 Robot**

The DASY system uses the high precision robots from Stäubli SA (France). For the 6-axis controller system, the robot controller version (DASY5: CS8c) from Stäubli is used. The Stäubli robot series have many features that are important for our application:

- High precision (repeatability  $\pm 0.035$  mm)
- High reliability (industrial design)
- Jerk-free straight movements
- Low ELF interference (the closed metallic construction shields against motor control fields)





**Fig-3.2 DASY5**

## FCC SAR Test Report


### 3.2.2 Probes

The SAR measurement is conducted with the dosimetric probe. The probe is specially designed and calibrated for use in liquid with high permittivity. The dosimetric probe has special calibration in liquid at different frequency.

<b>Model</b>	EX3DV4	
<b>Construction</b>	Symmetrical design with triangular core. Built-in shielding against static charges. PEEK enclosure material (resistant to organic solvents, e.g., DGBE).	
<b>Frequency</b>	10 MHz to 6 GHz Linearity: $\pm 0.2$ dB	
<b>Directivity</b>	$\pm 0.3$ dB in HSL (rotation around probe axis) $\pm 0.5$ dB in tissue material (rotation normal to probe axis)	
<b>Dynamic Range</b>	10 $\mu$ W/g to 100 mW/g Linearity: $\pm 0.2$ dB (noise: typically $< 1$ $\mu$ W/g)	
<b>Dimensions</b>	Overall length: 337 mm (Tip: 20 mm) Tip diameter: 2.5 mm (Body: 12 mm) Typical distance from probe tip to dipole centers: 1 mm	

<b>Model</b>	ES3DV3	
<b>Construction</b>	Symmetrical design with triangular core. Interleaved sensors. Built-in shielding against static charges. PEEK enclosure material (resistant to organic solvents, e.g., DGBE).	
<b>Frequency</b>	10 MHz to 4 GHz Linearity: $\pm 0.2$ dB	
<b>Directivity</b>	$\pm 0.2$ dB in HSL (rotation around probe axis) $\pm 0.3$ dB in tissue material (rotation normal to probe axis)	
<b>Dynamic Range</b>	5 $\mu$ W/g to 100 mW/g Linearity: $\pm 0.2$ dB	
<b>Dimensions</b>	Overall length: 337 mm (Tip: 20 mm) Tip diameter: 3.9 mm (Body: 12 mm) Distance from probe tip to dipole centers: 2.0 mm	


### 3.2.3 Data Acquisition Electronics (DAE)


<b>Model</b>	DAE3, DAE4	
<b>Construction</b>	Signal amplifier, multiplexer, A/D converter and control logic. Serial optical link for communication with DASY embedded system (fully remote controlled). Two step probe touch detector for mechanical surface detection and emergency robot stop.	
<b>Measurement Range</b>	-100 to +300 mV (16 bit resolution and two range settings: 4mV, 400mV)	
<b>Input Offset Voltage</b>	$< 5$ $\mu$ V (with auto zero)	
<b>Input Bias Current</b>	$< 50$ fA	
<b>Dimensions</b>	60 x 60 x 68 mm	



# FCC SAR Test Report


## 3.2.4 Phantoms


<b>Model</b>	Twin SAM	
<b>Construction</b>	The shell corresponds to the specifications of the Specific Anthropomorphic Mannequin (SAM) phantom defined in IEEE 1528 and IEC 62209-1. It enables the dosimetric evaluation of left and right hand phone usage as well as body mounted usage at the flat phantom region. A cover prevents evaporation of the liquid. Reference markings on the phantom allow the complete setup of all predefined phantom positions and measurement grids by teaching three points with the robot.	
<b>Material</b>	Vinylester, glass fiber reinforced (VE-GF)	
<b>Shell Thickness</b>	$2 \pm 0.2$ mm ( $6 \pm 0.2$ mm at ear point)	
<b>Dimensions</b>	Length: 1000 mm Width: 500 mm Height: adjustable feet	
<b>Filling Volume</b>	approx. 25 liters	

<b>Model</b>	ELI	
<b>Construction</b>	Phantom for compliance testing of handheld and body-mounted wireless devices in the frequency range of 30 MHz to 6 GHz. ELI is fully compatible with the IEC 62209-2 standard and all known tissue simulating liquids. ELI has been optimized regarding its performance and can be integrated into our standard phantom tables. A cover prevents evaporation of the liquid. Reference markings on the phantom allow installation of the complete setup, including all predefined phantom positions and measurement grids, by teaching three points. The phantom is compatible with all SPEAG dosimetric probes and dipoles.	
<b>Material</b>	Vinylester, glass fiber reinforced (VE-GF)	
<b>Shell Thickness</b>	$2.0 \pm 0.2$ mm (bottom plate)	
<b>Dimensions</b>	Major axis: 600 mm Minor axis: 400 mm	
<b>Filling Volume</b>	approx. 30 liters	


# FCC SAR Test Report

## 3.2.5 Device Holder

<b>Model</b>	Mounting Device	
<b>Construction</b>	In combination with the Twin SAM Phantom or ELI4, the Mounting Device enables the rotation of the mounted transmitter device in spherical coordinates. Rotation point is the ear opening point. Transmitter devices can be easily and accurately positioned according to IEC, IEEE, FCC or other specifications. The device holder can be locked for positioning at different phantom sections (left head, right head, flat).	
<b>Material</b>	POM	

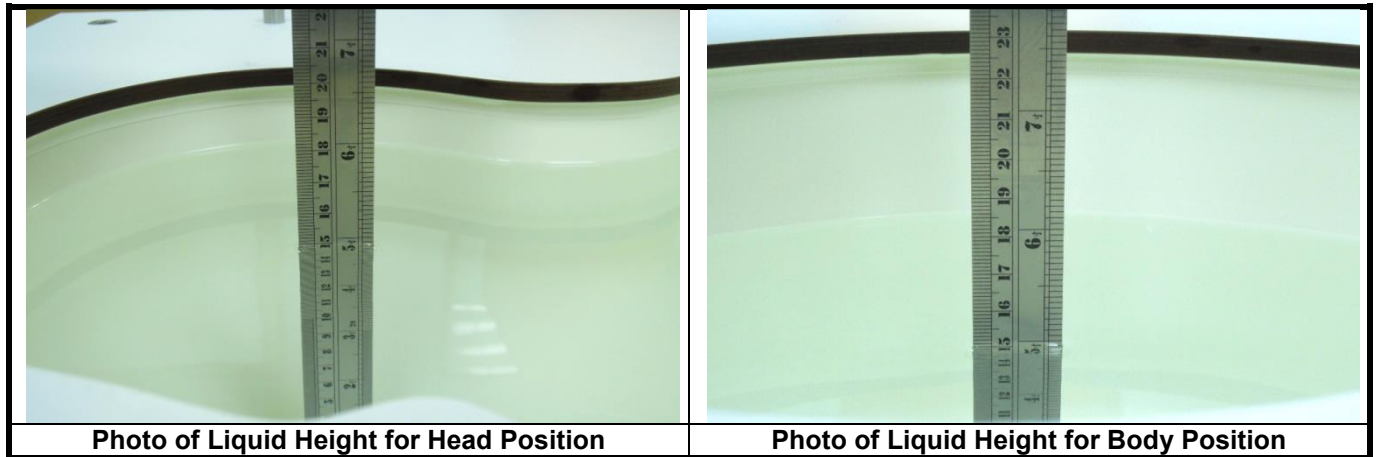
<b>Model</b>	Laptop Extensions Kit	
<b>Construction</b>	Simple but effective and easy-to-use extension for Mounting Device that facilitates the testing of larger devices according to IEC 62209-2 (e.g., laptops, cameras, etc.). It is lightweight and fits easily on the upper part of the Mounting Device in place of the phone positioner.	
<b>Material</b>	POM, Acrylic glass, Foam	

## 3.2.6 System Validation Dipoles

<b>Model</b>	D-Serial	
<b>Construction</b>	Symmetrical dipole with 1/4 balun. Enables measurement of feed point impedance with NWA. Matched for use near flat phantoms filled with tissue simulating solutions.	
<b>Frequency</b>	750 MHz to 5800 MHz	
<b>Return Loss</b>	> 20 dB	
<b>Power Capability</b>	> 100 W (f < 1GHz), > 40 W (f > 1GHz)	

### 3.2.7 Tissue Simulating Liquids

For SAR measurement of the field distribution inside the phantom, the phantom must be filled with homogeneous tissue simulating liquid to a depth of at least 15 cm. For head SAR testing, the liquid height from the ear reference point (ERP) of the phantom to the liquid top surface is larger than 15 cm. For body SAR testing, the liquid height from the center of the flat phantom to the liquid top surface is larger than 15 cm. The nominal dielectric values of the tissue simulating liquids in the phantom and the tolerance of 5% are listed in Table-3.1.



The dielectric properties of the head tissue simulating liquids are defined in IEEE 1528, and KDB 865664 D01 Appendix A. For the body tissue simulating liquids, the dielectric properties are defined in KDB 865664 D01 Appendix A. The dielectric properties of the tissue simulating liquids were verified prior to the SAR evaluation using a dielectric assessment kit and a network analyzer.

**Table-3.1 Targets of Tissue Simulating Liquid**

Frequency (MHz)	Target Permittivity	Range of $\pm 5\%$	Target Conductivity	Range of $\pm 5\%$
<b>For Head</b>				
750	41.9	39.8 ~ 44.0	0.89	0.85 ~ 0.93
835	41.5	39.4 ~ 43.6	0.90	0.86 ~ 0.95
900	41.5	39.4 ~ 43.6	0.97	0.92 ~ 1.02
1450	40.5	38.5 ~ 42.5	1.20	1.14 ~ 1.26
1640	40.3	38.3 ~ 42.3	1.29	1.23 ~ 1.35
1750	40.1	38.1 ~ 42.1	1.37	1.30 ~ 1.44
1800	40.0	38.0 ~ 42.0	1.40	1.33 ~ 1.47
1900	40.0	38.0 ~ 42.0	1.40	1.33 ~ 1.47
2000	40.0	38.0 ~ 42.0	1.40	1.33 ~ 1.47
2300	39.5	37.5 ~ 41.5	1.67	1.59 ~ 1.75
2450	39.2	37.2 ~ 41.2	1.80	1.71 ~ 1.89
2600	39.0	37.1 ~ 41.0	1.96	1.86 ~ 2.06
3500	37.9	36.0 ~ 39.8	2.91	2.76 ~ 3.06
5200	36.0	34.2 ~ 37.8	4.66	4.43 ~ 4.89
5300	35.9	34.1 ~ 37.7	4.76	4.52 ~ 5.00
5500	35.6	33.8 ~ 37.4	4.96	4.71 ~ 5.21
5600	35.5	33.7 ~ 37.3	5.07	4.82 ~ 5.32
5800	35.3	33.5 ~ 37.1	5.27	5.01 ~ 5.53

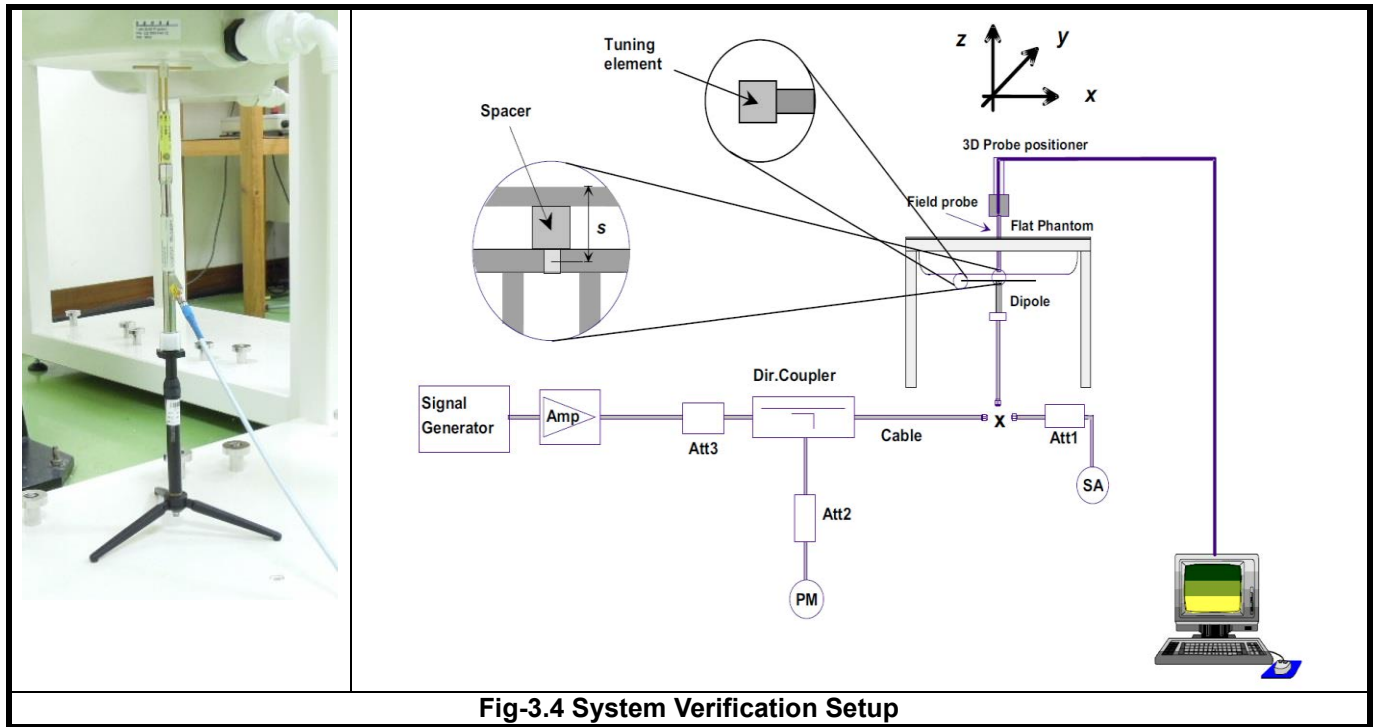
The following table gives the recipes for tissue simulating liquids.

**Table-3.2 Recipes of Tissue Simulating Liquid**

Tissue Type	Bactericide	DGBE	HEC	NaCl	Sucrose	Triton X-100	Water	Diethylene Glycol Mono-hexylether
H750	0.2	-	0.2	1.5	56.0	-	42.1	-
H835	0.2	-	0.2	1.5	57.0	-	41.1	-
H900	0.2	-	0.2	1.4	58.0	-	40.2	-
H1450	-	43.3	-	0.6	-	-	56.1	-
H1640	-	45.8	-	0.5	-	-	53.7	-
H1750	-	47.0	-	0.4	-	-	52.6	-
H1800	-	44.5	-	0.3	-	-	55.2	-
H1900	-	44.5	-	0.2	-	-	55.3	-
H2000	-	44.5	-	0.1	-	-	55.4	-
H2300	-	44.9	-	0.1	-	-	55.0	-
H2450	-	45.0	-	0.1	-	-	54.9	-
H2600	-	45.1	-	0.1	-	-	54.8	-
H3500	-	28.0	-	0.2	-	20.0	71.8	-
H5G	-	-	-	-	-	17.2	65.5	17.3
B5G	-	-	-	-	-	10.7	78.6	10.7

**3.3 SAR System Verification**

The system check verifies that the system operates within its specifications. It is performed daily or before every SAR measurement. The system check uses normal SAR measurements in the flat section of the phantom with a matched dipole at a specified distance. The system verification setup is shown as below.



**Fig-3.4 System Verification Setup**

The validation dipole is placed beneath the flat phantom with the specific spacer in place. The distance spacer is touch the phantom surface with a light pressure at the reference marking and be oriented parallel to the long side of the phantom. The spectrum analyzer measures the forward power at the location of the system check dipole connector. The signal generator is adjusted for the desired forward power (250 mW is used for 700 MHz to 3 GHz, 100 mW is used for 3.5 GHz to 6 GHz) at the dipole connector and the power meter is read at that level. After connecting the cable to the dipole, the signal generator is readjusted for the same reading at power meter.

After system check testing, the SAR result will be normalized to 1W forward input power and compared with the reference SAR value derived from validation dipole certificate report. The deviation of system check should be within 10 %.

**3.4 SAR Measurement Procedure**

According to the SAR test standard, the recommended procedure for assessing the peak spatial-average SAR value consists of the following steps:

- (a) Power reference measurement
- (b) Area scan
- (c) Zoom scan
- (d) Power drift measurement

The SAR measurement procedures for each of test conditions are as follows:

- (a) Make EUT to transmit maximum output power
- (b) Measure conducted output power through RF cable
- (c) Place the EUT in the specific position of phantom
- (d) Perform SAR testing steps on the DASY system
- (e) Record the SAR value

**3.4.1 Area & Zoom Scan Procedure**

First Area Scan is used to locate the approximate location(s) of the local peak SAR value(s). The measurement grid within an Area Scan is defined by the grid extent, grid step size and grid offset. Next, in order to determine the EM field distribution in a three-dimensional spatial extension, Zoom Scan is required. The Zoom Scan is performed around the highest E-field value to determine the averaged SAR-distribution over 10 g. According to KDB 865664 D01, the resolution for Area and Zoom scan is specified in the table below.

Items	<= 2 GHz	2-3 GHz	3-4 GHz	4-5 GHz	5-6 GHz
Area Scan ( $\Delta x, \Delta y$ )	<= 15 mm	<= 12 mm	<= 12 mm	<= 10 mm	<= 10 mm
Zoom Scan ( $\Delta x, \Delta y$ )	<= 8 mm	<= 5 mm	<= 5 mm	<= 4 mm	<= 4 mm
Zoom Scan ( $\Delta z$ )	<= 5 mm	<= 5 mm	<= 4 mm	<= 3 mm	<= 2 mm
Zoom Scan Volume	>= 30 mm	>= 30 mm	>= 28 mm	>= 25 mm	>= 22 mm

**Note:**

When zoom scan is required and report SAR is <= 1.4 W/kg, the zoom scan resolution of  $\Delta x / \Delta y$  (2-3GHz: <= 8 mm, 3-4GHz: <= 7 mm, 4-6GHz: <= 5 mm) may be applied.

**3.4.2 Volume Scan Procedure**

The volume scan is used for assess overlapping SAR distributions for antennas transmitting in different frequency bands. It is equivalent to an oversized zoom scan used in standalone measurements. The measurement volume will be used to enclose all the simultaneous transmitting antennas. For antennas transmitting simultaneously in different frequency bands, the volume scan is measured separately in each frequency band. In order to sum correctly to compute the 1g aggregate SAR, the EUT remain in the same test position for all measurements and all volume scan use the same spatial resolution and grid spacing. When all volume scan were completed, the software, SEMCAD postprocessor can combine and subsequently superpose these measurement data to calculating the multiband SAR.

### 3.4.3 Power Drift Monitoring

All SAR testing is under the EUT install full charged battery and transmit maximum output power. In DASY measurement software, the power reference measurement and power drift measurement procedures are used for monitoring the power drift of EUT during SAR test. Both these procedures measure the field at a specified reference position before and after the SAR testing. The software will calculate the field difference in dB. If the power drift more than 5%, the SAR will be retested.

### 3.4.4 Spatial Peak SAR Evaluation

The procedure for spatial peak SAR evaluation has been implemented according to the test standard. It can be conducted for 1g and 10g, as well as for user-specific masses. The DASY software includes all numerical procedures necessary to evaluate the spatial peak SAR value.

The base for the evaluation is a "cube" measurement. The measured volume must include the 1g and 10g cubes with the highest averaged SAR values. For that purpose, the center of the measured volume is aligned to the interpolated peak SAR value of a previously performed area scan.

The entire evaluation of the spatial peak values is performed within the post-processing engine (SEMCAD). The system always gives the maximum values for the 1g and 10g cubes. The algorithm to find the cube with highest averaged SAR is divided into the following stages:

- (a) Extraction of the measured data (grid and values) from the Zoom Scan
- (b) Calculation of the SAR value at every measurement point based on all stored data (A/D values and measurement parameters)
- (c) Generation of a high-resolution mesh within the measured volume
- (d) Interpolation of all measured values from the measurement grid to the high-resolution grid
- (e) Extrapolation of the entire 3-D field distribution to the phantom surface over the distance from sensor to surface
- (f) Calculation of the averaged SAR within masses of 1g and 10g

### 3.4.5 SAR Averaged Methods

In DASY, the interpolation and extrapolation are both based on the modified Quadratic Shepard's method. The interpolation scheme combines a least-square fitted function method and a weighted average method which are the two basic types of computational interpolation and approximation.

Extrapolation routines are used to obtain SAR values between the lowest measurement points and the inner phantom surface. The extrapolation distance is determined by the surface detection distance and the probe sensor offset. The uncertainty increases with the extrapolation distance. To keep the uncertainty within 1% for the 1 g and 10 g cubes, the extrapolation distance should not be larger than 5 mm.

## **4. SAR Measurement Evaluation**

### **4.1 EUT Configuration and Setting**

#### **<Considerations Related to WLAN for Setup and Testing>**

In general, various vendor specific external test software and chipset based internal test modes are typically used for SAR measurement. These chipset based test mode utilities are generally hardware and manufacturer dependent, and often include substantial flexibility to reconfigure or reprogram a device. A Wi-Fi device must be configured to transmit continuously at the required data rate, channel bandwidth and signal modulation, using the highest transmission duty factor supported by the test mode tools for SAR measurement. The test frequencies established using test mode must correspond to the actual channel frequencies. When 802.11 frame gaps are accounted for in the transmission, a maximum transmission duty factor of 92 - 96% is typically achievable in most test mode configurations. A minimum transmission duty factor of 85% is required to avoid certain hardware and device implementation issues related to wide range SAR scaling. In addition, a periodic transmission duty factor is required for current generation SAR systems to measure SAR correctly. The reported SAR must be scaled to 100% transmission duty factor to determine compliance at the maximum tune-up tolerance limit.

According to KDB 248227 D01, this device has installed WLAN engineering testing software which can provide continuous transmitting RF signal. During WLAN SAR testing, this device was operated to transmit continuously at the maximum transmission duty with specified transmission mode, operating frequency, lowest data rate, and maximum output power.

#### **Initial Test Configuration**

An initial test configuration is determined for OFDM transmission modes in 2.4 GHz and 5 GHz bands according to the channel bandwidth, modulation and data rate combination(s) with the highest maximum output power specified for production units in each standalone and aggregated frequency band. When the same maximum power is specified for multiple transmission modes in a frequency band, the largest channel bandwidth, lowest order modulation, lowest data rate and lowest order 802.11a/g/n/ac mode is used for SAR measurement, on the highest measured output power channel in the initial test configuration, for each frequency band.

#### **Subsequent Test Configuration**

SAR measurement requirements for the remaining 802.11 transmission mode configurations that have not been tested in the initial test configuration are determined separately for each standalone and aggregated frequency band, in each exposure condition, according to the maximum output power specified for production units. Additional power measurements may be required to determine if SAR measurements are required for subsequent highest output power channels in a subsequent test configuration. When the highest reported SAR for the initial test configuration according to the initial test position or fixed exposure position requirements, is adjusted by the ratio of the subsequent test configuration to initial test configuration specified maximum output power and the adjusted SAR is  $\leq 1.2$  W/kg, SAR is not required for that subsequent test configuration.

#### **SAR Test Configuration and Channel Selection**

When multiple channel bandwidth configurations in a frequency band have the same specified maximum output power, the initial test configuration is using largest channel bandwidth, lowest order modulation, lowest data rate, and lowest order 802.11 mode (i.e., 802.11a is chosen over 802.11n then 802.11ac or 802.11g is chosen over



# FCC SAR Test Report

802.11n). After an initial test configuration is determined, if multiple test channels have the same measured maximum output power, the channel chosen for SAR measurement is determined according to the following.

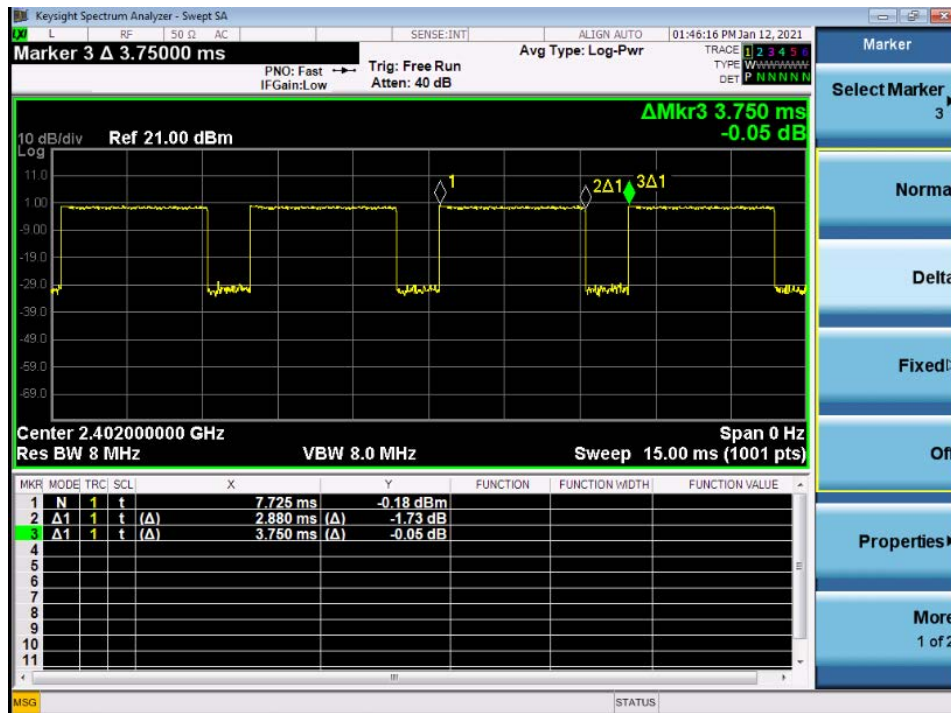
- 1) The channel closest to mid-band frequency is selected for SAR measurement.
- 2) For channels with equal separation from mid-band frequency; for example, high and low channels or two mid-band channels, the higher frequency (number) channel is selected for SAR measurement.

For devices that operate in both U-NII bands using the same transmitter and antenna(s), SAR test reduction is determined according to the following.

- 1) When the same maximum output power is specified for both bands, begin SAR measurement in U-NII-2A band by applying the OFDM SAR requirements. If the highest reported SAR for a test configuration is  $\leq 1.2$  W/kg, SAR is not required for U-NII-1 band for that configuration (802.11 mode and exposure condition).
- 2) When different maximum output power is specified for the bands, begin SAR measurement in the band with higher specified maximum output power. The highest reported SAR for the tested configuration is adjusted by the ratio of lower to higher specified maximum output power for the two bands. When the adjusted SAR is  $\leq 1.2$  W/kg, SAR is not required for the band with lower maximum output power in that test configuration.

## <Considerations Related to Bluetooth for Setup and Testing>

This device has installed Bluetooth engineering testing software which can provide continuous transmitting RF signal. During Bluetooth SAR testing, this device was operated to transmit continuously at the maximum transmission duty with specified transmission mode, operating frequency, lowest data rate, and maximum output power.



## 4.2 EUT Testing Position

According to KDB 648474 D04, handsets are tested for SAR compliance in head, body-worn accessory and other use configurations described in the following subsections.

### 4.2.1 Head Exposure Conditions

Head exposure is limited to next to the ear voice mode operations. Head SAR compliance is tested according to the test positions defined in IEEE Std 1528-2013 using the SAM phantom illustrated as below.

1. Define two imaginary lines on the handset
  - (a) The vertical centerline passes through two points on the front side of the handset - the midpoint of the width  $w_t$  of the handset at the level of the acoustic output, and the midpoint of the width  $w_b$  of the bottom of the handset.
  - (b) The horizontal line is perpendicular to the vertical centerline and passes through the center of the acoustic output. The horizontal line is also tangential to the face of the handset at point A.
  - (c) The two lines intersect at point A. Note that for many handsets, point A coincides with the center of the acoustic output; however, the acoustic output may be located elsewhere on the horizontal line. Also note that the vertical centerline is not necessarily parallel to the front face of the handset, especially for clamshell handsets, handsets with flip covers, and other irregularly shaped handsets.

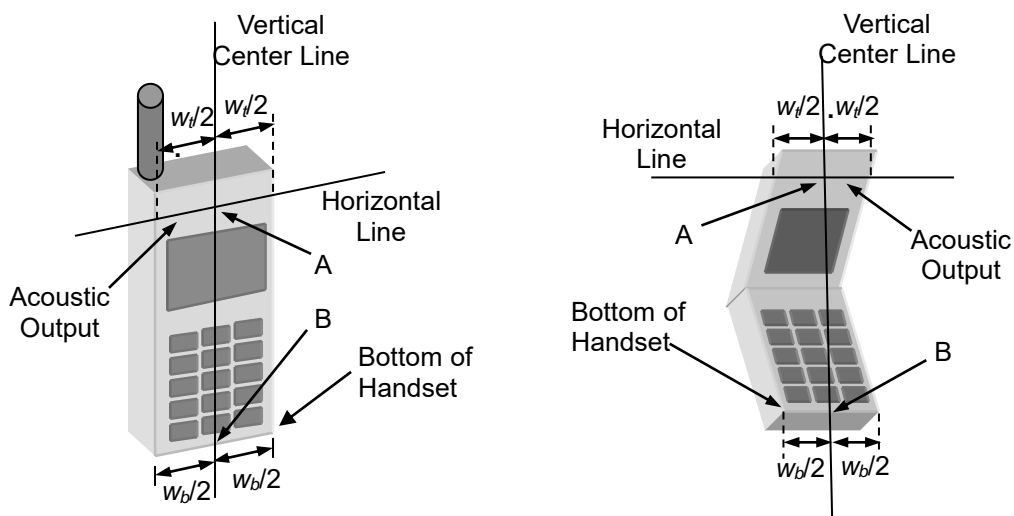
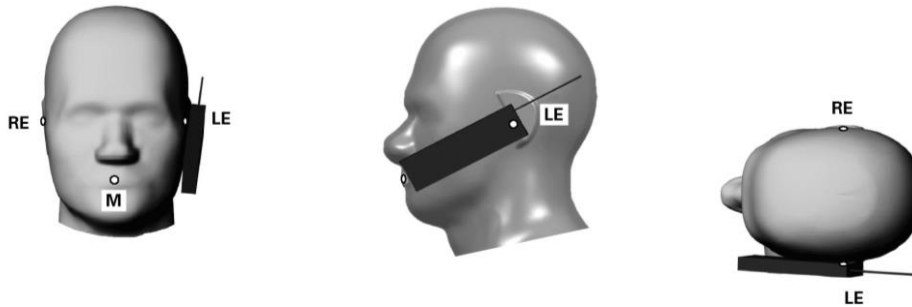


Fig-4.1 Illustration for Handset Vertical and Horizontal Reference Lines

### 2. Cheek Position

- (a) To position the device with the vertical center line of the body of the device and the horizontal line crossing the center piece in a plane parallel to the sagittal plane of the phantom. While maintaining the device in this plane, align the vertical center line with the reference plane containing the three ear and mouth reference point (M: Mouth, RE: Right Ear, and LE: Left Ear) and align the center of the ear piece with the line RE-LE.
- (b) To move the device towards the phantom with the ear piece aligned with the line LE-RE until the phone touched the ear. While maintaining the device in the reference plane and maintaining the phone contact with the ear,

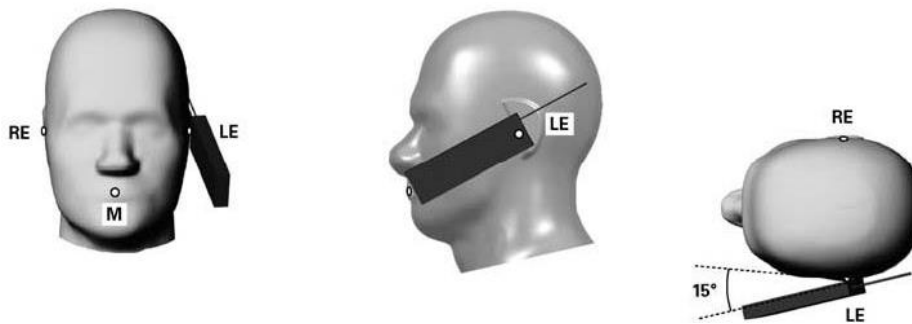
move the bottom of the phone until any point on the front side is in contact with the cheek of the phantom or until contact with the ear is lost (see Fig-4.2).



**Fig-4.2 Illustration for Cheek Position**

**3. Tilted Position**

- (a) To position the device in the “cheek” position described above.
- (b) While maintaining the device the reference plane described above and pivoting against the ear, moves it outward away from the mouth by an angle of 15 degrees or until contact with the ear is lost (see Fig-4.3).



**Fig-4.3 Illustration for Tilted Position**

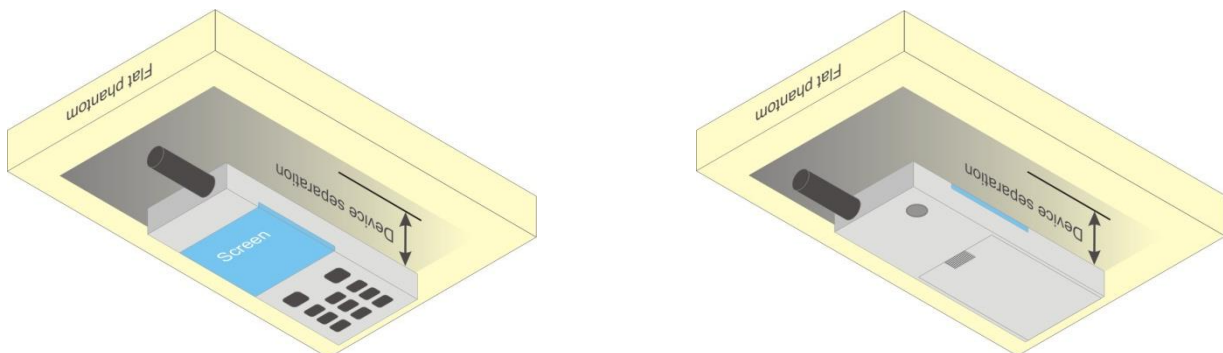
**4.2.2 Body-worn Accessory Exposure Conditions**

Body-worn accessory exposure is typically related to voice mode operations when handsets are carried in body-worn accessories. The body-worn accessory procedures in KDB 447498 D01 are used to test for body-worn accessory SAR compliance, without a headset connected to it. This enables the test results for such configuration to be compatible with that required for hotspot mode when the body-worn accessory test separation distance is greater than or equal to that required for hotspot mode. When the reported SAR for a body-worn accessory, measured without a headset connected to the handset, is  $> 1.2 \text{ W/kg}$ , the highest reported SAR configuration for that wireless mode and frequency band should be repeated for that body-worn accessory with a headset attached to the handset.

Body-worn accessories that do not contain metallic or conductive components may be tested according to worst-case exposure configurations, typically according to the smallest test separation distance required for the group of body-worn accessories with similar operating and exposure characteristics. All body-worn accessories containing metallic components are tested in conjunction with the host device.

Body-worn accessory SAR compliance is based on a single minimum test separation distance for all wireless and operating modes applicable to each body-worn accessory used by the host, and according to the relevant voice and/or data mode transmissions and operations. If a body-worn accessory supports voice only operations in its normal and expected use conditions, testing of data mode for body-worn compliance is not required.

A conservative minimum test separation distance for supporting off-the-shelf body-worn accessories that may be acquired by users of consumer handsets is used to test for body-worn accessory SAR compliance. This distance is determined by the handset manufacturer, according to the requirements of Supplement C 01-01. Devices that are designed to operate on the body of users using lanyards and straps, or without requiring additional body-worn accessories, will be tested using a conservative minimum test separation distance  $\leq 5 \text{ mm}$  to support compliance.



**Fig-4.4 Illustration for Body Worn Position**

### 4.2.3 Extremity Exposure Conditions

For smart phones with a display diagonal dimension > 15 cm or an overall diagonal dimension > 16 cm that provide similar mobile web access and multimedia support found in mini-tablets or UMPC mini-tablets that support voice calls next to the ear, the following phablet procedures should be applied to evaluate SAR compliance for each applicable wireless modes and frequency band. Devices marketed as phablets, regardless of form factors and operating characteristics must be tested as a phablet to determine SAR compliance.

1. The normally required head and body-worn accessory SAR test procedures for handsets, including hotspot mode, must be applied.
2. The UMPC mini-tablet procedures must also be applied to test the SAR of all surfaces and edges with an antenna located at  $\leq 25$  mm from that surface or edge, in direct contact with a flat phantom, for 10-g extremity SAR according to the body-equivalent tissue dielectric parameters in KDB 865664 to address interactive hand use exposure conditions. The UMPC mini-tablet 1-g SAR at 5 mm is not required. When hotspot mode applies, 10-g extremity SAR is required only for the surfaces and edges with hotspot mode 1-g SAR > 1.2 W/kg. The normal tablet procedures in KDB 616217 are required when the over diagonal dimension of the device is > 20 cm. Hotspot mode SAR is not required when normal tablet procedures are applied. Extremity 10-g SAR is also not required for the front (top) surface of large form factor full size tablets. The more conservative tablet SAR results can be used to support the 10-g extremity SAR for phablet mode.
3. The simultaneous transmission operating configurations applicable to voice and data transmissions for both phone and mini-tablet modes must be taken into consideration separately for 1-g and 10-g SAR to determine the simultaneous transmission SAR test exclusion and measurement requirements for the relevant wireless modes and exposure conditions.

### 4.3 Tissue Verification

The measuring results for tissue simulating liquid are shown as below.

Test Date	Tissue Type	Frequency (MHz)	Liquid Temp. (°C)	Measured Conductivity ( $\sigma$ )	Measured Permittivity ( $\epsilon_r$ )	Target Conductivity ( $\sigma$ )	Target Permittivity ( $\epsilon_r$ )	Conductivity Deviation (%)	Permittivity Deviation (%)
Jan. 20, 2021	H2450	2450	22.6	1.800	39.996	1.80	39.20	0.00	2.03
Jan. 21, 2021	H5G	5250	22.6	4.724	37.305	4.71	35.90	0.30	3.91
Jan. 22, 2021	H5G	5600	22.4	5.066	36.827	5.07	35.50	-0.08	3.74
Jan. 23, 2021	H5G	5800	22.5	5.270	36.562	5.27	35.30	0.00	3.58

**Note:**

The dielectric properties of the tissue simulating liquid must be measured within 24 hours before the SAR testing and within  $\pm 5\%$  of the target values. Liquid temperature during the SAR testing must be within  $\pm 2$  °C.

### 4.4 System Verification

The measuring result for system verification is tabulated as below.

Test Date	Mode	Frequency (MHz)	1W Target SAR-1g (W/kg)	Measured SAR-1g (W/kg)	Normalized to 1W SAR-1g (W/kg)	Deviation (%)	Dipole S/N	Probe S/N	DAE S/N
Jan. 20, 2021	H2450	2450	53.10	13.70	54.80	3.20	893	3873	1341
Jan. 21, 2021	H5G	5250	79.00	8.05	80.50	1.90	1133	3873	1341
Jan. 22, 2021	H5G	5600	84.30	7.97	79.70	-5.46	1133	3873	1341
Jan. 23, 2021	H5G	5800	81.10	8.63	86.30	6.41	1133	3873	1341

**Note:**

Comparing to the reference SAR value provided by SPEAG, the validation data should be within its specification of 10 %. The result indicates the system check can meet the variation criterion and the plots can be referred to Appendix A of this report.

**4.5 Maximum Output Power**

**4.5.1 Maximum Conducted Power**

The maximum conducted average power (Unit: dBm) including tune-up tolerance is shown as below.

Mode	2.4G WLAN		5.2G WLAN		5.3G WLAN		5.6G WLAN		5.8G WLAN	
	Full Power	Reduce Power	Full Power	Reduce Power	Full Power	Reduce Power	Full Power	Reduce Power	Full Power	Reduce Power
802.11b	19.8	18.8	N/A	N/A	N/A	N/A	N/A	N/A	N/A	N/A
802.11g	17.8	16.8	N/A	N/A	N/A	N/A	N/A	N/A	N/A	N/A
802.11a	N/A	N/A	17.0	16	17.0	16	17.0	16	17.0	16
802.11n HT20	16.8	15.8	15.8	14.8	15.8	14.8	15.8	14.8	15.8	14.8
802.11n HT40	N/A	N/A	15.8	14.8	15.8	14.8	15.8	14.8	15.8	14.8
802.11ac VHT20	N/A	N/A	16.3	15.3	16.3	15.3	16.3	15.3	16.3	15.3
802.11ac VHT40	N/A	N/A	14.3	14.3	14.3	14.3	14.3	14.3	14.3	14.3
802.11ac VHT80	N/A	N/A	14.3	14.3	14.3	14.3	14.3	14.3	14.3	14.3

Mode	2.4G Bluetooth
BR / EDR	10.5
LE	-1.5

**Note:**

1. When the receiver is working, the power will be reduced.

# FCC SAR Test Report

## 4.5.2 Measured Conducted Power Result

The measuring conducted average power (Unit: dBm) is shown as below.

<Full Power>

<WLAN 2.4G>

Mode	Channel	Frequency (MHz)	Avg. Power (dBm)	Duty cycle %
802.11b	1	2412	18.49	99.50
	6	2437	18.35	
	11	2462	18.39	
802.11g	1	2412	16.04	96.70
	6	2437	16.23	
	11	2462	16.25	
802.11n HT20	1	2412	14.88	96.40
	6	2437	15.06	
	11	2462	15.21	

Bluetooth				
Mode	Channel	Frequency (MHz)	Avg. Power (dBm)	
BR / EDR	0	2402	9.45	
	39	2441	8.58	
	78	2480	9.23	
BT 4.0 LE	0	2402	-2.00	
	19	2440	-1.45	
	39	2480	-2.73	
BT 5.0 LE	0	2402	-3.76	
	19	2440	-3.15	
	39	2480	-4.50	



# FCC SAR Test Report

## <WLAN 5.2G>

Mode	Channel	Frequency (MHz)	Avg. Power (dBm)	Duty cycle %
802.11a	36	5180	15.09	96.90
	40	5200	15.22	
	44	5220	15.16	
	48	5240	15.10	
802.11n HT20	36	5180	14.09	96.70
	40	5200	13.99	
	44	5220	13.98	
	48	5240	14.02	
802.11n HT40	38	5190	14.13	93.50
	46	5230	14.14	
802.11ac VHT20	36	5180	14.56	96.70
	40	5200	14.52	
	44	5220	14.53	
	48	5240	14.48	
802.11ac VHT40	38	5190	12.59	93.50
	46	5230	12.61	
802.11ac VHT80	42	5210	12.43	87.80

## <WLAN 5.3G>

Mode	Channel	Frequency (MHz)	Avg. Power (dBm)	Duty cycle %
802.11a	52	5260	15.27	96.90
	56	5280	15.12	
	60	5300	15.22	
	64	5320	15.19	
802.11n HT20	52	5260	14.04	96.70
	56	5280	14.06	
	60	5300	14.00	
	64	5320	14.07	
802.11n HT40	54	5270	13.96	93.50
	62	5310	14.04	
802.11ac VHT20	52	5260	14.51	96.70
	56	5280	14.47	
	60	5300	14.58	
	64	5320	14.64	
802.11ac VHT40	54	5270	12.64	93.50
	62	5310	12.63	
802.11ac VHT80	58	5290	12.69	87.80

# FCC SAR Test Report

## <WLAN 5.6G>

Mode	Channel	Frequency (MHz)	Avg. Power (dBm)	Duty cycle %
802.11a	100	5500	15.03	96.90
	116	5580	15.13	
	124	5620	15.00	
	132	5660	15.02	
	140	5700	15.09	
802.11n HT20	100	5500	14.19	96.70
	116	5580	14.05	
	124	5620	14.01	
	132	5660	14.19	
	140	5700	14.25	
802.11n HT40	102	5510	14.12	93.50
	110	5550	14.06	
	126	5630	13.92	
	134	5670	14.15	
802.11ac VHT20	100	5500	14.42	96.70
	116	5580	14.66	
	124	5620	14.56	
	132	5660	14.51	
	140	5700	14.70	
802.11ac VHT40	102	5510	12.48	93.50
	110	5550	12.43	
	126	5630	12.42	
	134	5670	12.50	
802.11ac VHT80	106	5530	12.66	87.80
	122	5610	12.56	

# FCC SAR Test Report

## <WLAN 5.8G>

Mode	Channel	Frequency (MHz)	Avg. Power (dBm)	Duty cycle %
802.11a	149	5745	15.25	96.90
	157	5785	15.28	
	165	5825	15.26	
802.11n HT20	149	5745	14.06	96.70
	157	5785	14.23	
	165	5825	14.06	
802.11n HT40	151	5755	14.32	93.50
	159	5795	14.09	
802.11ac VHT20	149	5745	14.59	96.70
	157	5785	14.73	
	165	5825	14.54	
802.11ac VHT40	151	5755	12.57	93.50
	159	5795	12.52	
802.11ac VHT80	155	5775	12.65	87.80

# FCC SAR Test Report

<Reduce Power>

<WLAN 2.4G>

Mode	Channel	Frequency (MHz)	Avg. Power (dBm)	Duty cycle %
802.11b	1	2412	17.71	99.50
	6	2437	17.51	
	11	2462	17.66	
802.11g	1	2412	15.01	96.70
	6	2437	15.20	
	11	2462	15.25	
802.11n HT20	1	2412	13.80	96.40
	6	2437	14.11	
	11	2462	14.04	

<WLAN 5.2G>

Mode	Channel	Frequency (MHz)	Avg. Power (dBm)	Duty cycle %
802.11a	36	5180	14.02	96.90
	40	5200	14.15	
	44	5220	14.18	
	48	5240	14.12	
802.11n HT20	36	5180	12.86	96.70
	40	5200	12.84	
	44	5220	12.82	
	48	5240	12.87	
802.11n HT40	38	5190	12.81	93.50
	46	5230	12.88	
802.11ac VHT20	36	5180	13.32	96.70
	40	5200	13.37	
	44	5220	13.38	
	48	5240	13.34	
802.11ac VHT40	38	5190	12.59	93.50
	46	5230	12.61	
802.11ac VHT80	42	5210	12.43	87.80

<WLAN 5.3G>

Mode	Channel	Frequency (MHz)	Avg. Power (dBm)	Duty cycle %
802.11a	52	5260	14.20	96.90
	56	5280	14.28	
	60	5300	14.26	
	64	5320	14.03	
802.11n HT20	52	5260	12.88	96.70
	56	5280	12.84	
	60	5300	12.98	
	64	5320	13.04	
802.11n HT40	54	5270	12.89	93.50
	62	5310	12.84	
802.11ac VHT20	52	5260	13.31	96.70
	56	5280	13.37	
	60	5300	13.34	
	64	5320	13.33	
802.11ac VHT40	54	5270	12.64	93.50
	62	5310	12.63	
802.11ac VHT80	58	5290	12.69	87.80

<WLAN 5.6G>

Mode	Channel	Frequency (MHz)	Avg. Power (dBm)	Duty cycle %
802.11a	100	5500	14.23	96.90
	116	5580	14.05	
	124	5620	14.17	
	132	5660	14.25	
	140	5700	14.16	
802.11n HT20	100	5500	13.21	96.70
	116	5580	13.01	
	124	5620	13.04	
	132	5660	13.27	
	140	5700	13.13	
802.11n HT40	102	5510	12.85	93.50
	110	5550	12.89	
	126	5630	12.83	
	134	5670	12.88	
802.11ac VHT20	100	5500	13.62	96.70
	116	5580	13.42	
	124	5620	13.34	
	132	5660	13.68	
	140	5700	13.78	
802.11ac VHT40	102	5510	12.48	93.50
	110	5550	12.43	
	126	5630	12.42	
	134	5670	12.50	
802.11ac VHT80	106	5530	12.66	87.80
	122	5610	12.56	

# FCC SAR Test Report

## <WLAN 5.8G>

Mode	Channel	Frequency (MHz)	Avg. Power (dBm)	Duty cycle %
802.11a	149	5745	14.22	96.90
	157	5785	14.07	
	165	5825	14.24	
802.11n HT20	149	5745	13.88	96.70
	157	5785	13.86	
	165	5825	13.66	
802.11n HT40	151	5755	13.04	93.50
	159	5795	13.17	
802.11ac VHT20	149	5745	13.34	96.70
	157	5785	13.32	
	165	5825	13.37	
802.11ac VHT40	151	5755	12.57	93.50
	159	5795	12.52	
802.11ac VHT80	155	5775	12.65	87.80

## 4.6 SAR Testing Results

### 4.6.1 SAR Test Reduction Considerations

#### <KDB 447498 D01, General RF Exposure Guidance>

Testing of other required channels within the operating mode of a frequency band is not required when the reported SAR for the mid-band or highest output power channel is:

- (1)  $\leq 0.8$  W/kg or 2.0 W/kg, for 1-g or 10-g respectively, when the transmission band is  $\leq 100$  MHz
- (2)  $\leq 0.6$  W/kg or 1.5 W/kg, for 1-g or 10-g respectively, when the transmission band is between 100 MHz and 200 MHz
- (3)  $\leq 0.4$  W/kg or 1.0 W/kg, for 1-g or 10-g respectively, when the transmission band is  $\geq 200$  MHz

#### <KDB 248227 D01, SAR Guidance for Wi-Fi Transmitters>

- (1) For handsets operating next to ear, hotspot mode or mini-tablet configurations, the initial test position procedures were applied. The test position with the highest extrapolated peak SAR will be used as the initial test position. When the reported SAR of initial test position is  $\leq 0.4$  W/kg, SAR testing for remaining test positions is not required. Otherwise, SAR is evaluated at the subsequent highest peak SAR positions until the reported SAR result is  $\leq 0.8$  W/kg or all test positions are measured.
- (2) For WLAN 2.4 GHz, the highest measured maximum output power channel for DSSS was selected for SAR measurement. When the reported SAR is  $\leq 0.8$  W/kg, no further SAR testing is required. Otherwise, SAR is evaluated at the next highest measured output power channel. When any reported SAR is  $> 1.2$  W/kg, SAR is required for the third channel. For OFDM modes (802.11g/n), SAR is not required when the highest reported SAR for DSSS is adjusted by the ratio of OFDM to DSSS specified maximum output power and it is  $\leq 1.2$  W/kg.
- (3) For WLAN 5 GHz, the initial test configuration was selected according to the transmission mode with the highest maximum output power. When the reported SAR of initial test configuration is  $> 0.8$  W/kg, SAR is required for the subsequent highest measured output power channel until the reported SAR result is  $\leq 1.2$  W/kg or all required channels are measured. For other transmission modes, SAR is not required when the highest reported SAR for initial test configuration is adjusted by the ratio of subsequent test configuration to initial test configuration specified maximum output power and it is  $\leq 1.2$  W/kg.
- (4) For WLAN MIMO mode, the power-based standalone SAR test exclusion or the sum of SAR provision in KDB 447498 to determine simultaneous transmission SAR test exclusion should be applied. Otherwise, SAR for MIMO mode will be measured with all applicable antennas transmitting simultaneously at the specified maximum output power of MIMO operation.



# FCC SAR Test Report

## 4.6.2 SAR Results for Head Exposure Condition

Plot No.	Band	Mode	Test Position	Ch.	Power Reduction	Sample	Duty Cycle %	Max. Tune-up Power (dBm)	Measured Conducted Power (dBm)	Power Drift (dB)	Measured SAR-1g (W/kg)	Duty Cycle Factor	Scaling Factor	Scaled SAR-1g (W/kg)
1	WLAN2.4G	802.11b	Right Cheek	1	Receiver on	1	99.5	18.8	17.71	0.03	0.820	1.01	1.29	<b>1.06</b>
	WLAN2.4G	802.11b	Right Tilted	1	Receiver on	1	99.5	18.8	17.71	0.03	0.610	1.01	1.29	0.79
	WLAN2.4G	802.11b	Left Cheek	1	Receiver on	1	99.5	18.8	17.71	-0.01	0.299	1.01	1.29	0.39
	WLAN2.4G	802.11b	Left Tilted	1	Receiver on	1	99.5	18.8	17.71	0.05	0.364	1.01	1.29	0.47
	WLAN2.4G	802.11b	Right Cheek	6	Receiver on	1	99.5	18.8	17.51	-0.03	0.735	1.01	1.35	0.99
	WLAN2.4G	802.11b	Right Cheek	11	Receiver on	1	99.5	18.8	17.66	0.09	0.734	1.01	1.30	0.96
	WLAN2.4G	802.11b	Right Cheek	1	Receiver on	2	99.5	18.8	17.71	0.01	0.816	1.01	1.29	1.05
2	WLAN5G	802.11a	Right Cheek	52	Receiver on	1	96.9	16.0	14.20	-0.06	0.684	1.03	1.51	1.07
	WLAN5G	802.11a	Right Tilted	52	Receiver on	1	96.9	16.0	14.20	0.06	0.510	1.03	1.51	0.79
	WLAN5G	802.11a	Left Cheek	52	Receiver on	1	96.9	16.0	14.20	-0.19	0.235	1.03	1.51	0.37
	WLAN5G	802.11a	Left Tilted	52	Receiver on	1	96.9	16.0	14.20	-0.08	0.284	1.03	1.51	0.44
	WLAN5G	802.11a	Right Cheek	60	Receiver on	1	96.9	16.0	14.26	0	0.700	1.03	1.49	1.08
	WLAN5G	802.11a	Right Cheek	56	Receiver on	1	96.9	16.0	14.28	0.08	0.746	1.03	1.49	<b>1.14</b>
	WLAN5G	802.11a	Right Cheek	64	Receiver on	1	96.9	16.0	14.03	-0.05	0.641	1.03	1.57	1.04
3	WLAN5G	802.11a	Right Cheek	56	Receiver on	2	96.9	16.0	14.28	0.07	0.690	1.03	1.49	1.06
	WLAN5G	802.11a	Right Cheek	116	Receiver on	1	96.9	16.0	14.05	-0.07	0.453	1.03	1.57	<b>0.73</b>
	WLAN5G	802.11a	Right Tilted	116	Receiver on	1	96.9	16.0	14.05	0.04	0.394	1.03	1.57	0.64
	WLAN5G	802.11a	Left Cheek	116	Receiver on	1	96.9	16.0	14.05	0.07	0.151	1.03	1.57	0.24
	WLAN5G	802.11a	Left Tilted	116	Receiver on	1	96.9	16.0	14.05	0.07	0.167	1.03	1.57	0.27
4	WLAN5G	802.11a	Right Cheek	116	Receiver on	2	96.9	16.0	14.05	0.02	0.450	1.03	1.57	0.73
	WLAN5G	802.11a	Right Cheek	157	Receiver on	1	96.9	16.0	14.07	0.02	0.489	1.03	1.56	<b>0.79</b>
	WLAN5G	802.11a	Right Tilted	157	Receiver on	1	96.9	16.0	14.07	0.02	0.348	1.03	1.56	0.56
	WLAN5G	802.11a	Left Cheek	157	Receiver on	1	96.9	16.0	14.07	-0.04	0.126	1.03	1.56	0.20
	WLAN5G	802.11a	Left Tilted	157	Receiver on	1	96.9	16.0	14.07	0.07	0.130	1.03	1.56	0.21
5	WLAN5G	802.11a	Right Cheek	157	Receiver on	2	96.9	16.0	14.07	0.02	0.488	1.03	1.56	0.78
	BT	GFSK	Right Cheek	0	-	1	76.8	10.5	9.45	0.04	0.177	1.30	1.27	<b>0.29</b>
	BT	GFSK	Right Tilted	0	-	1	76.8	10.5	9.45	-0.02	0.140	1.30	1.27	0.23
	BT	GFSK	Left Cheek	0	-	1	76.8	10.5	9.45	0.11	0.051	1.30	1.27	0.08
	BT	GFSK	Left Tilted	0	-	1	76.8	10.5	9.45	0.04	0.062	1.30	1.27	0.10
BT	GFSK	Right Cheek	0	-	2	76.8	10.5	9.45	0.05	0.140	1.30	1.27	0.23	

## 4.6.3 SAR Results for Body-worn Exposure Condition (Separation Distance is 1.0 cm Gap)

Plot No.	Band	Mode	Test Position	Separation Distance (cm)	Ch.	Sample	Duty Cycle %	Max. Tune-up Power (dBm)	Measured Conducted Power (dBm)	Power Drift (dB)	Measured SAR-1g (W/kg)	Duty Cycle Factor	Scaling Factor	Scaled SAR-1g (W/kg)
6	WLAN2.4G	802.11b	Front Face	1	1	1	99.5	19.8	18.49	0.03	0.335	1.01	1.35	<b>0.46</b>
	WLAN2.4G	802.11b	Rear Face	1	1	1	99.5	19.8	18.49	0.02	0.170	1.01	1.35	0.23
	WLAN2.4G	802.11b	Front Face	1	1	2	99.5	19.0	18.49	0.05	0.298	1.01	1.12	0.34
7	WLAN5G	802.11a	Front Face	1	52	1	96.9	17.0	15.27	-0.03	0.255	1.03	1.49	<b>0.39</b>
	WLAN5G	802.11a	Rear Face	1	52	1	96.9	17.0	15.27	0.04	0.129	1.03	1.49	0.20
	WLAN5G	802.11a	Front Face	1	52	2	96.9	17.0	15.27	-0.06	0.250	1.03	1.49	0.38
8	WLAN5G	802.11a	Front Face	1	116	1	96.9	17.0	15.13	0.08	0.132	1.03	1.54	<b>0.21</b>
	WLAN5G	802.11a	Rear Face	1	116	1	96.9	17.0	15.13	0.04	0.0808	1.03	1.54	0.13
	WLAN5G	802.11a	Front Face	1	116	2	96.9	17.0	15.13	-0.02	0.126	1.03	1.54	0.20
9	WLAN5G	802.11a	Front Face	1	157	1	96.9	17.0	15.28	0	0.177	1.03	1.49	<b>0.27</b>
	WLAN5G	802.11a	Rear Face	1	157	1	96.9	17.0	15.28	0.01	0.047	1.03	1.49	0.07
	WLAN5G	802.11a	Front Face	1	157	2	96.9	17.0	15.28	0.02	0.157	1.03	1.49	0.24
10	BT	GFSK	Front Face	1	0	1	76.8	10.5	9.45	-0.09	0.036	1.30	1.27	<b>0.06</b>
	BT	GFSK	Rear Face	1	0	1	76.8	10.5	9.45	-0.07	0.019	1.30	1.27	0.03
	BT	GFSK	Front Face	1	0	2	76.8	10.5	9.45	0.07	0.031	1.30	1.27	0.05

# FCC SAR Test Report

## 4.6.4 SAR Results for Extremity Exposure Condition (Separation Distance is 0 cm Gap)

Plot No.	Band	Mode	Test Position	Separation Distance (cm)	Ch.	Sample	Duty Cycle %	Max. Tune-up Power (dBm)	Measured Conducted Power (dBm)	Power Drift (dB)	Measured SAR-1g (W/kg)	Duty Cycle Factor	Scaling Factor	Scaled SAR-1g (W/kg)
11	WLAN2.4G	802.11a	Front Face	0	1	1	99.5	19.8	18.49	0.06	0.664	1.01	1.35	<b>0.90</b>
	WLAN2.4G	802.11a	Rear Face	0	1	1	99.5	19.8	18.49	0.00	0.535	1.01	1.35	0.73
	WLAN2.4G	802.11a	Left Side	0	1	1	99.5	19.8	18.49	0.00	0.415	1.01	1.35	0.56
	WLAN2.4G	802.11a	Top Side	0	1	1	99.5	19.8	18.49	0.19	0.390	1.01	1.35	0.53
	WLAN2.4G	802.11a	Front Face	0	1	2	99.5	19.8	18.49	0.03	0.639	1.01	1.35	0.87
12	WLAN5G	802.11a	Front Face	0	52	1	96.9	17.0	15.27	0.01	0.767	1.03	1.49	<b>1.18</b>
	WLAN5G	802.11a	Rear Face	0	52	1	96.9	17.0	15.27	0.07	0.337	1.03	1.49	0.52
	WLAN5G	802.11a	Left Side	0	52	1	96.9	17.0	15.27	0.06	0.481	1.03	1.49	0.74
	WLAN5G	802.11a	Top Side	0	52	1	96.9	17.0	15.27	0.15	0.337	1.03	1.49	0.52
	WLAN5G	802.11a	Front Face	0	52	2	96.9	17.0	15.27	0.03	0.758	1.03	1.49	1.16
13	WLAN5G	802.11a	Front Face	0	116	1	96.9	17.0	15.13	0.09	0.545	1.03	1.54	<b>0.86</b>
	WLAN5G	802.11a	Rear Face	0	116	1	96.9	17.0	15.13	0.03	0.219	1.03	1.54	0.35
	WLAN5G	802.11a	Left Side	0	116	1	96.9	17.0	15.13	0.03	0.298	1.03	1.54	0.47
	WLAN5G	802.11a	Top Side	0	116	1	96.9	17.0	15.13	0.01	0.248	1.03	1.54	0.39
	WLAN5G	802.11a	Front Face	0	116	2	96.9	17.0	15.13	0.04	0.513	1.03	1.54	0.81
14	WLAN5G	802.11a	Front Face	0	157	1	96.9	17.0	15.28	0.09	0.641	1.03	1.49	<b>0.98</b>
	WLAN5G	802.11a	Rear Face	0	157	1	96.9	17.0	15.28	0.00	0.229	1.03	1.49	0.35
	WLAN5G	802.11a	Left Side	0	157	1	96.9	17.0	15.28	0.06	0.280	1.03	1.49	0.43
	WLAN5G	802.11a	Top Side	0	157	1	96.9	17.0	15.28	0.04	0.277	1.03	1.49	0.42
	WLAN5G	802.11a	Front Face	0	157	2	96.9	17.0	15.28	0.07	0.622	1.03	1.49	0.95
15	BT	-	Front Face	0	0	1	76.8	10.5	9.45	0.02	0.136	1.30	1.27	<b>0.23</b>
	BT	-	Rear Face	0	0	1	76.8	10.5	9.45	0.03	0.0599	1.30	1.27	0.10
	BT	-	Left Side	0	0	1	76.8	10.5	9.45	0.00	0.0505	1.30	1.27	0.08
	BT	-	Top Side	0	0	1	76.8	10.5	9.45	0.04	0.0651	1.30	1.27	0.11
	BT	-	Front Face	0	0	2	76.8	10.5	9.45	0.03	0.102	1.30	1.27	0.17

**4.6.5 SAR Measurement Variability**

According to KDB 865664 D01, SAR measurement variability was assessed for each frequency band, which is determined by the SAR probe calibration point and tissue-equivalent medium used for the device measurements. When both head and body tissue-equivalent media are required for SAR measurements in a frequency band, the variability measurement procedures should be applied to the tissue medium with the highest measured SAR, using the highest measured SAR configuration for that tissue-equivalent medium. Alternatively, if the highest measured SAR for both head and body tissue-equivalent media are  $\leq 1.45$  W/kg and the ratio of these highest SAR values, i.e., largest divided by smallest value, is  $\leq 1.10$ , the highest SAR configuration for either head or body tissue-equivalent medium may be used to perform the repeated measurement. These additional measurements are repeated after the completion of all measurements requiring the same head or body tissue-equivalent medium in a frequency band. The test device should be returned to ambient conditions (normal room temperature) with the battery fully charged before it is re-mounted on the device holder for the repeated measurement(s) to minimize any unexpected variations in the repeated results.

SAR repeated measurement procedure:

1. When the highest measured SAR is  $< 0.80$  W/kg, repeated measurement is not required.
2. When the highest measured SAR is  $\geq 0.80$  W/kg, repeat that measurement once.
3. If the ratio of largest to smallest SAR for the original and first repeated measurements is  $> 1.20$ , or when the original or repeated measurement is  $\geq 1.45$  W/kg, perform a second repeated measurement.
4. If the ratio of largest to smallest SAR for the original, first and second repeated measurements is  $> 1.20$ , and the original, first or second repeated measurement is  $\geq 1.5$  W/kg, perform a third repeated measurement.

Band	Test Position	Ch.	Original Measured SAR-1g (W/kg)	1st Repeated SAR-1g (W/kg)	L/S Ratio	2nd Repeated SAR-1g (W/kg)	L/S Ratio	3rd Repeated SAR-1g (W/kg)	L/S Ratio
WLAN2.4G	Right Cheek	1	0.820	0.811	1.01	N/A	N/A	N/A	N/A

# FCC SAR Test Report

## 4.6.6 Simultaneous Multi-band Transmission Evaluation

### <Simultaneous transmission possibilities>

The simultaneous transmission possibilities for this device are listed as below.

Simultaneous TX Combination	Capable Transmit Configurations	Head (Data)	Body-worn (Data)	Extremity (Data)
1	WLAN 5G(Data) + BT(Data)	Yes	Yes	Yes

#### Note :

1. The 2.4G WLAN and 5G WLAN cannot transmit simultaneously.
1. The 2.4G WLAN and BT cannot transmit simultaneously.

### <SAR Summation Analysis>

Simultaneous transmission SAR test exclusion is determined for each operating configuration and exposure condition according to the reported standalone SAR of each applicable simultaneous transmitting antenna. When the sum of SAR<sub>1g</sub> of all simultaneously transmitting antennas in an operating mode and exposure condition combination is within the SAR limit (SAR<sub>1g</sub> 1.6 W/kg), the simultaneous transmission SAR is not required. When the sum of SAR<sub>1g</sub> is greater than the SAR limit (SAR<sub>1g</sub> 1.6 W/kg), SAR test exclusion is determined by the SPLSR.

No.	Conditions (SAR1 + SAR2)	Exposure Condition	Test Position	Max. SAR1	Max. SAR2	SAR Summation	SPLSR Analysis
1	WLAN (NII) + BT (DSS)	Head	Right Cheek	1.14	0.29	1.43	ΣSAR < 1.6, Not required
			Right Tilted	0.79	0.23	1.02	ΣSAR < 1.6, Not required
			Left Cheek	0.37	0.08	0.45	ΣSAR < 1.6, Not required
			Left Tilted	0.44	0.10	0.54	ΣSAR < 1.6, Not required
		Body-Worn	Front Face	0.39	0.06	0.45	ΣSAR < 1.6, Not required
			Rear Face	0.20	0.03	0.23	ΣSAR < 1.6, Not required
		Extremity	Front Face	1.18	0.23	1.41	ΣSAR < 1.6, Not required
			Rear Face	0.52	0.10	0.62	ΣSAR < 1.6, Not required
			Left Side	0.74	0.08	0.82	ΣSAR < 1.6, Not required
			Top Side	0.52	0.11	0.63	ΣSAR < 1.6, Not required

Test Engineer : Yuyu Lu, and Dennis Ye

**5. Calibration of Test Equipment**

Equipment	Manufacturer	Model	SN	Cal. Date	Cal. Interval
System Validation Dipole	SPEAG	D2450V2	893	Aug. 27, 2020	1 Year
System Validation Dipole	SPEAG	D5GHzV2	1133	Aug. 20, 2020	1 Year
Dielectric Probe Kit	SPEAG	DAK-3.5	1076	Aug. 19, 2020	1 Year
Dosimetric E-Field Probe	SPEAG	EX3DV4	3873	Aug. 27, 2020	1 Year
Data Acquisition Electronics	SPEAG	DAE4	1341	Aug. 26, 2020	1 Year
ENA Series Network Analyzer	Agilent	E5071C	MY46214638	Jun. 03, 2020	1 Year
Spectrum Analyzer	KEYSIGHT	N9010A	MY54510355	Jul. 08, 2020	1Year
MXG Analog Signal Generator	KEYSIGHT	N5183A	MY50143024	Mar. 26, 2020	1 Year
Power Sensor	R&S	NRP-Z21	105007	Oct. 14, 2020	1 Year
Power Meter	ANRITSU	ML2495A	1506002	Feb. 25, 2020	1 Year
Power Sensor	ANRITSU	MA2411B	1339353	Feb. 25, 2020	1 Year
Temp. & Humi. Recorder	CLOCK	HTC-1	157248	Jun. 07, 2020	1 Year
Electronic Thermometer	YONGFA	YF-160A	120100323	Jun. 07, 2020	1 Year
Coupler	Woken	0110A056020-10	COM27RW1A3	Jul. 01, 2020	1 Year

## 6. Measurement Uncertainty

DASY5 Uncertainty Budget								
Error Description	Uncertainty Value (±%)	Probability	Divisor	(Ci) 1g	(Ci) 10g	Standard Uncertainty (1g) (±%)	Standard Uncertainty (10g) (±%)	(Vi) Veff
<b>Measurement System</b>								
Probe Calibration	6.0	N	1	1	1	6.0	6.0	∞
Axial Isotropy	4.7	R	1.732	0.7	0.7	1.9	1.9	∞
Hemispherical Isotropy	9.6	R	1.732	0.7	0.7	3.9	3.9	∞
Boundary Effects	1.0	R	1.732	1	1	0.6	0.6	∞
Linearity	4.7	R	1.732	1	1	2.7	2.7	∞
System Detection Limits	1.0	R	1.732	1	1	0.6	0.6	∞
Modulation Response	3.2	R	1.732	1	1	1.8	1.8	∞
Readout Electronics	0.3	N	1	1	1	0.3	0.3	∞
Response Time	0.0	R	1.732	1	1	0.0	0.0	∞
Integration Time	2.6	R	1.732	1	1	1.5	1.5	∞
RF Ambient Noise	3.0	R	1.732	1	1	1.7	1.7	∞
RF Ambient Reflections	3.0	R	1.732	1	1	1.7	1.7	∞
Probe Positioner	0.4	R	1.732	1	1	0.2	0.2	∞
Probe Positioning	2.9	R	1.732	1	1	1.7	1.7	∞
Max. SAR Eval.	2.0	R	1.732	1	1	1.2	1.2	∞
<b>Test Sample Related</b>								
Device Positioning	3.0	N	1	1	1	3.0	3.0	35
Device Holder	3.6	N	1	1	1	3.6	3.6	12
Power Drift	5.0	R	1.732	1	1	2.9	2.9	∞
Power Scaling	0.0	R	1.732	1	1	0.0	0.0	∞
<b>Phantom and Setup</b>								
Phantom Uncertainty	6.1	R	1.732	1	1	3.5	3.5	∞
SAR correction	0.0	R	1.732	1	0.84	0.0	0.0	∞
Liquid Conductivity Repeatability	0.2	N	1	0.78	0.71	0.1	0.1	5
Liquid Conductivity (target)	5.0	R	1.732	0.78	0.71	2.3	2.0	∞
Liquid Conductivity (mea.)	2.5	R	1.732	0.78	0.71	1.1	1.0	∞
Temp. unc. - Conductivity	3.4	R	1.732	0.78	0.71	1.5	1.4	∞
Liquid Permittivity Repeatability	0.15	N	1	0.23	0.26	0.0	0.0	5
Liquid Permittivity (target)	5.0	R	1.732	0.23	0.26	0.7	0.8	∞
Liquid Permittivity (mea.)	2.5	R	1.732	0.23	0.26	0.3	0.4	∞
Temp. unc. - Permittivity	0.83	R	1.732	0.23	0.26	0.1	0.1	∞
<b>Combined Std. Uncertainty</b>						11.4%	11.4%	1013
<b>Coverage Factor for 95 %</b>						K=2	K=2	
<b>Expanded STD Uncertainty</b>						22.9%	22.7%	

Uncertainty budget for frequency range 30 MHz to 3 GHz

# FCC SAR Test Report

DASY5 Uncertainty Budget								
Error Description	Uncertainty Value (±%)	Probability	Divisor	(Ci) 1g	(Ci) 10g	Standard Uncertainty (1g) (±%)	Standard Uncertainty (10g) (±%)	(Vi) Veff
<b>Measurement System</b>								
Probe Calibration	6.55	N	1	1	1	6.5	6.5	∞
Axial Isotropy	4.7	R	1.732	0.7	0.7	1.9	1.9	∞
Hemispherical Isotropy	9.6	R	1.732	0.7	0.7	3.9	3.9	∞
Boundary Effects	2.0	R	1.732	1	1	1.2	1.2	∞
Linearity	4.7	R	1.732	1	1	2.7	2.7	∞
System Detection Limits	1.0	R	1.732	1	1	0.6	0.6	∞
Modulation Response	3.2	R	1.732	1	1	1.8	1.8	∞
Readout Electronics	0.3	N	1	1	1	0.3	0.3	∞
Response Time	0.0	R	1.732	1	1	0.0	0.0	∞
Integration Time	2.6	R	1.732	1	1	1.5	1.5	∞
RF Ambient Noise	3.0	R	1.732	1	1	1.7	1.7	∞
RF Ambient Reflections	3.0	R	1.732	1	1	1.7	1.7	∞
Probe Positioner	0.4	R	1.732	1	1	0.2	0.2	∞
Probe Positioning	6.7	R	1.732	1	1	3.9	3.9	∞
Max. SAR Eval.	4.0	R	1.732	1	1	2.3	2.3	∞
<b>Test Sample Related</b>								
Device Positioning	3.0	N	1	1	1	3.0	3.0	35
Device Holder	3.6	N	1	1	1	3.6	3.6	12
Power Drift	5.0	R	1.732	1	1	2.9	2.9	∞
Power Scaling	0.0	R	1.732	1	1	0.0	0.0	∞
<b>Phantom and Setup</b>								
Phantom Uncertainty	6.6	R	1.732	1	1	3.8	3.8	∞
SAR correction	0.0	R	1.732	1	0.84	0.0	0.0	∞
Liquid Conductivity Repeatability	0.2	N	1	0.78	0.71	0.1	0.1	5
Liquid Conductivity (target)	5.0	R	1.732	0.78	0.71	2.3	2.0	∞
Liquid Conductivity (mea.)	2.5	R	1.732	0.78	0.71	1.1	1.0	∞
Temp. unc. - Conductivity	3.4	R	1.732	0.78	0.71	1.5	1.4	∞
Liquid Permittivity Repeatability	0.15	N	1	0.23	0.26	0.0	0.0	5
Liquid Permittivity (target)	5.0	R	1.732	0.23	0.26	0.7	0.8	∞
Liquid Permittivity (mea.)	2.5	R	1.732	0.23	0.26	0.3	0.4	∞
Temp. unc. - Permittivity	0.83	R	1.732	0.23	0.26	0.1	0.1	∞
<b>Combined Std. Uncertainty</b>						12.5%	12.5%	1458
<b>Coverage Factor for 95 %</b>						K=2	K=2	
<b>Expanded STD Uncertainty</b>						25.0%	24.9%	

## Uncertainty budget for frequency range 3 GHz to 6 GHz

### **7. Information on the Testing Laboratories**

We, BV 7LAYERS COMMUNICATIONS TECHNOLOGY (SHENZHEN) CO. LTD., were founded in 2015 to provide our best service in EMC, Radio, Telecom and Safety consultation. Our laboratories are accredited and approved according to ISO/IEC 17025.

If you have any comments, please feel free to contact us at the following:

Add: No. B102, Dazu Chuangxin Mansion, North of Beihuan Avenue, North Area, Hi-Tech Industry Park, Nanshan District, Shenzhen, Guangdong, China

Tel: 86-755-8869-6566

Fax: 86-755-8869-6577

**Email:** [customerservice.sw@cn.bureauveritas.com](mailto:customerservice.sw@cn.bureauveritas.com)

**Web Site:** [www.bureauveritas.com](http://www.bureauveritas.com)

The road map of all our labs can be found in our web site also.

**---END---**



## Appendix A. SAR Plots of System Verification

The plots for system verification with largest deviation for each SAR system combination are shown as follows.

## System Check\_HSL2450\_210120

**DUT: Dipole:2450 MHz;Type:D2450V2**

Communication System: CW; Frequency: 2450 MHz;Duty Cycle: 1:1

Medium: HSL2450\_0120 Medium parameters used:  $f = 2450$  MHz;  $\sigma = 1.8$  S/m;  $\epsilon_r = 39.996$ ;  $\rho = 1000$  kg/m<sup>3</sup>

Ambient Temperature : 23.4°C; Liquid Temperature : 22.6°C

DASY5 Configuration:

- Probe: EX3DV4 - SN3873; ConvF(7.27, 7.27, 7.27); Calibrated: 2020/08/27;
- Sensor-Surface: 1.4mm (Mechanical Surface Detection)
- Electronics: DAE4 Sn1341; Calibrated: 2020/08/26
- Phantom: Front Phantom with CRP v5.0; Type: QD000P40CD; Serial: TP:1695
- Measurement SW: DASY52, Version 52.8 (8); SEMCAD X Version 14.6.10 (7331)

**Pin=250mW/Area Scan (91x101x1):** Interpolated grid: dx=1.200 mm, dy=1.200 mm

Maximum value of SAR (interpolated) = 22.6 W/kg

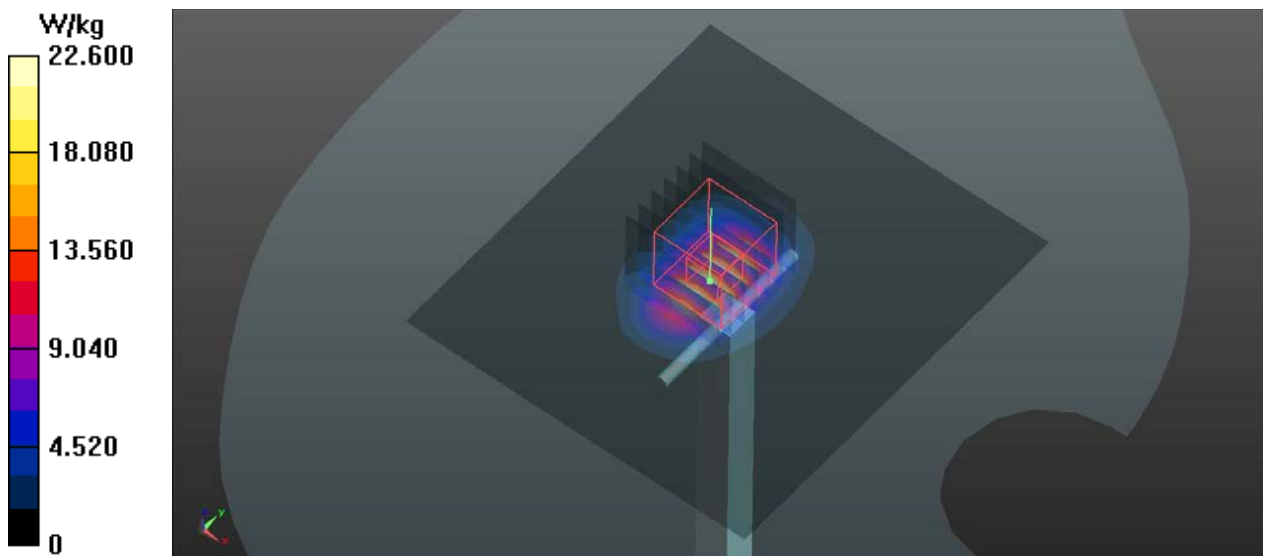
**Pin=250mW/Zoom Scan (7x7x7)/Cube 0:** Measurement grid: dx=5mm, dy=5mm, dz=5mm

Reference Value = 108.0 V/m; Power Drift = 0.07 dB

Peak SAR (extrapolated) = 28.9 W/kg

**SAR(1 g) = 13.7 W/kg; SAR(10 g) = 6.3 W/kg**

Maximum value of SAR (measured) = 23.2 W/kg



## System Check\_HSL5250\_210121

### DUT: Dipole 5GHzV2;Type:D5GHzV2

Communication System: CW; Frequency: 5250 MHz;Duty Cycle: 1:1

Medium: HSL5G\_0121 Medium parameters used:  $f = 5250$  MHz;  $\sigma = 4.724$  S/m;  $\epsilon_r = 37.305$ ;  $\rho = 1000$  kg/m<sup>3</sup>

Ambient Temperature : 23.5°C; Liquid Temperature : 22.6°C

#### DASY5 Configuration:

- Probe: EX3DV4 - SN3873; ConvF(4.8, 4.8, 4.8); Calibrated: 2020/08/27;
- Sensor-Surface: 1.4mm (Mechanical Surface Detection)
- Electronics: DAE4 Sn1341; Calibrated: 2020/08/26
- Phantom: Front Phantom with CRP v5.0; Type: QD000P40CD; Serial: TP:1695
- Measurement SW: DASY52, Version 52.8 (8); SEMCAD X Version 14.6.10 (7331)

**Pin=100mW/Area Scan (91x91x1):** Interpolated grid: dx=1.000 mm, dy=1.000 mm

Maximum value of SAR (interpolated) = 19.4 W/kg

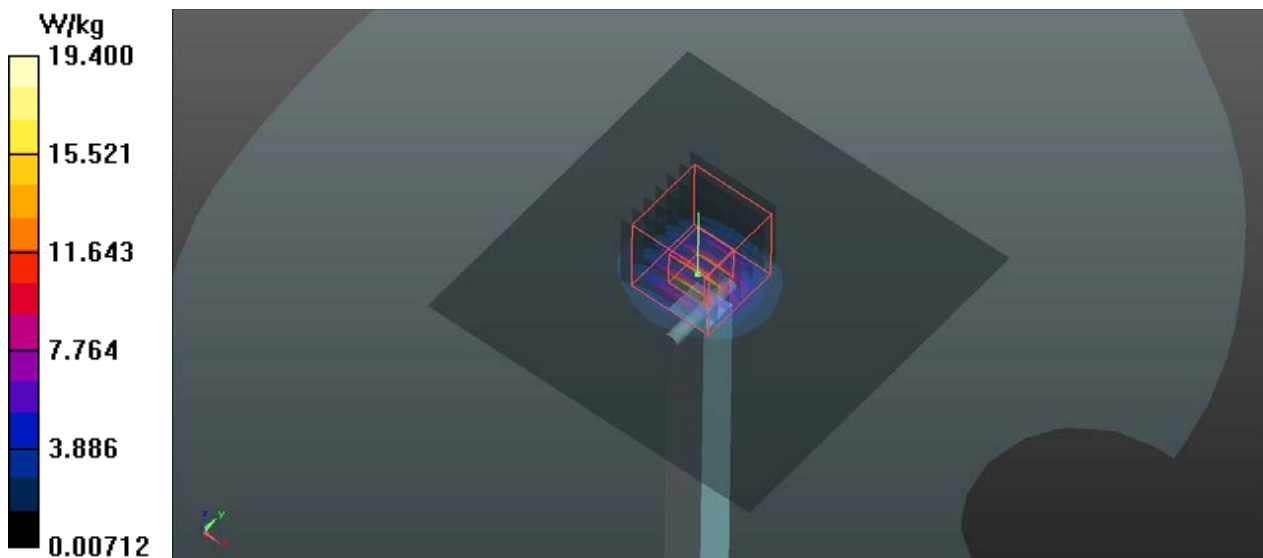
**Pin=100mW/Zoom Scan (7x7x12)/Cube 0:** Measurement grid: dx=4mm, dy=4mm, dz=2mm

Reference Value = 55.19 V/m; Power Drift = 0.11 dB

Peak SAR (extrapolated) = 33.9 W/kg

**SAR(1 g) = 8.05 W/kg; SAR(10 g) = 2.27 W/kg**

Maximum value of SAR (measured) = 20.5 W/kg



## System Check\_HSL5600\_210122

### DUT: Dipole 5GHzV2;Type:D5GHzV2

Communication System: CW; Frequency: 5600 MHz;Duty Cycle: 1:1

Medium: HSL5G\_0122 Medium parameters used:  $f = 5600$  MHz;  $\sigma = 5.066$  S/m;  $\epsilon_r = 36.827$ ;  $\rho = 1000$  kg/m<sup>3</sup>

Ambient Temperature : 23.3°C; Liquid Temperature : 22.4°C

#### DASY5 Configuration:

- Probe: EX3DV4 - SN3873; ConvF(4.5, 4.5, 4.5); Calibrated: 2020/08/27;
- Sensor-Surface: 1.4mm (Mechanical Surface Detection)
- Electronics: DAE4 Sn1341; Calibrated: 2020/08/26
- Phantom: Front Phantom with CRP v5.0; Type: QD000P40CD; Serial: TP:1695
- Measurement SW: DASY52, Version 52.8 (8); SEMCAD X Version 14.6.10 (7331)

**Pin=100mW/Area Scan (91x91x1):** Interpolated grid: dx=1.000 mm, dy=1.000 mm

Maximum value of SAR (interpolated) = 19.4 W/kg

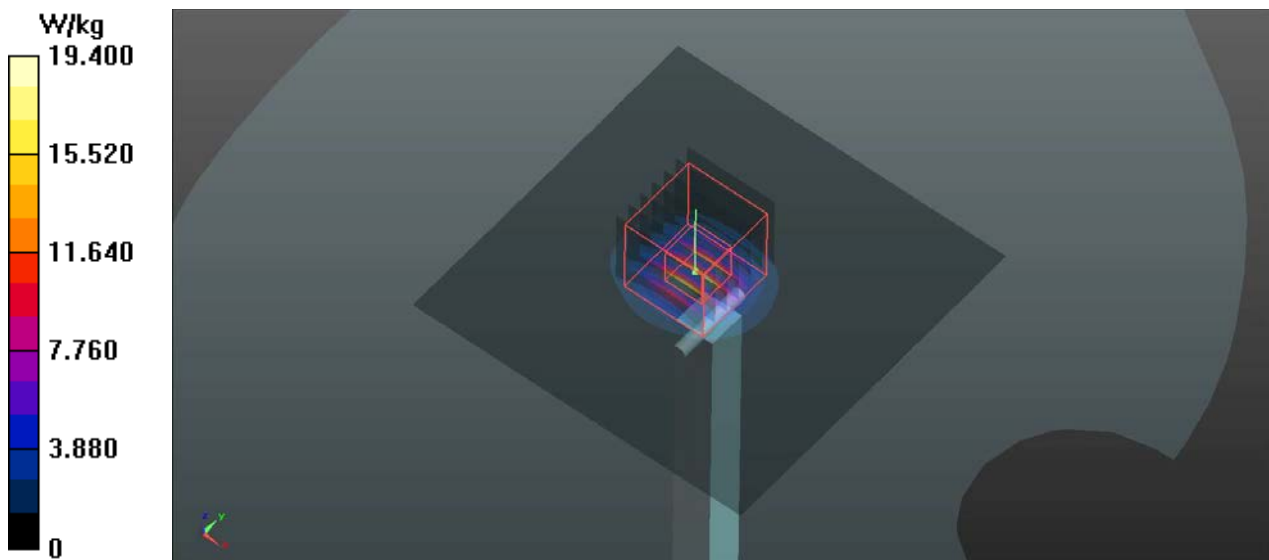
**Pin=100mW/Zoom Scan (7x7x12)/Cube 0:** Measurement grid: dx=4mm, dy=4mm, dz=2mm

Reference Value = 56.78 V/m; Power Drift = 0.04 dB

Peak SAR (extrapolated) = 34.9 W/kg

**SAR(1 g) = 7.97 W/kg; SAR(10 g) = 2.23 W/kg**

Maximum value of SAR (measured) = 20.7 W/kg



## System Check\_HSL5800\_210123

### DUT: Dipole 5GHzV2;Type:D5GHzV2

Communication System: CW; Frequency: 5800 MHz;Duty Cycle: 1:1

Medium: HSL5G\_0123 Medium parameters used:  $f = 5800$  MHz;  $\sigma = 5.27$  S/m;  $\epsilon_r = 36.562$ ;  $\rho = 1000$  kg/m<sup>3</sup>

Ambient Temperature : 23.5°C; Liquid Temperature : 22.5°C

#### DASY5 Configuration:

- Probe: EX3DV4 - SN3873; ConvF(4.49, 4.49, 4.49); Calibrated: 2020/08/27;
- Sensor-Surface: 1.4mm (Mechanical Surface Detection)
- Electronics: DAE4 Sn1341; Calibrated: 2020/08/26
- Phantom: Front Phantom with CRP v5.0; Type: QD000P40CD; Serial: TP:1695
- Measurement SW: DASY52, Version 52.8 (8); SEMCAD X Version 14.6.10 (7331)

**Pin=100mW/Area Scan (91x91x1):** Interpolated grid: dx=1.000 mm, dy=1.000 mm

Maximum value of SAR (interpolated) = 22.0 W/kg

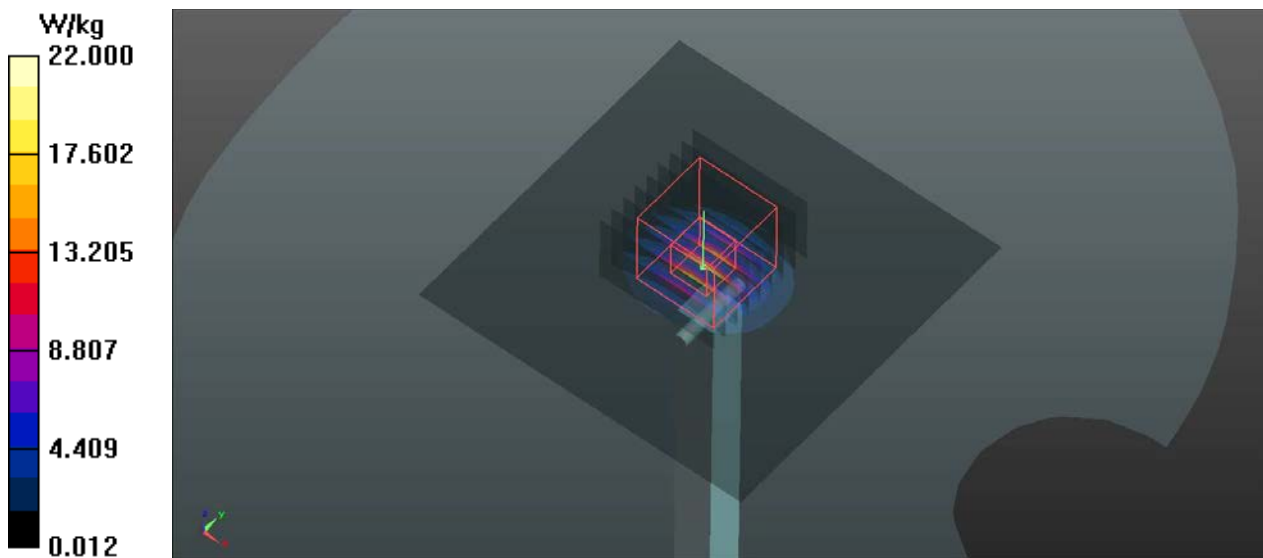
**Pin=100mW/Zoom Scan (7x7x12)/Cube 0:** Measurement grid: dx=4mm, dy=4mm, dz=2mm

Reference Value = 62.83 V/m; Power Drift = 0.02 dB

Peak SAR (extrapolated) = 38.4 W/kg

**SAR(1 g) = 8.63 W/kg; SAR(10 g) = 2.47 W/kg**

Maximum value of SAR (measured) = 23.2 W/kg



## Appendix B. SAR Plots of SAR Measurement

The SAR plots for highest measured SAR in each exposure configuration, wireless mode and frequency band combination, and measured SAR > 1.5 W/kg are shown as follows.

## P01 WLAN2.4G\_802.11b\_Right Cheek\_Ch1

**DUT: A20210104W002**

Communication System: 802.11b; Frequency: 2412 MHz; Duty Cycle: 1:1.01

Medium: HSL2450\_0120 Medium parameters used:  $f = 2412$  MHz;  $\sigma = 1.765$  S/m;  $\epsilon_r = 40.147$ ;  $\rho = 1000$  kg/m<sup>3</sup>

Ambient Temperature : 23.4°C; Liquid Temperature : 22.6°C

DASY5 Configuration:

- Probe: EX3DV4 - SN3873; ConvF(7.27, 7.27, 7.27); Calibrated: 2020/08/27;
- Sensor-Surface: 1.4mm (Mechanical Surface Detection)
- Electronics: DAE4 Sn1341; Calibrated: 2020/08/26
- Phantom: Front Phantom with CRP v5.0; Type: QD000P40CD; Serial: TP:1695
- Measurement SW: DASY52, Version 52.8 (8); SEMCAD X Version 14.6.10 (7331)

- **Area Scan (101x171x1)**: Interpolated grid: dx=1.200 mm, dy=1.200 mm

Maximum value of SAR (interpolated) = 1.46 W/kg

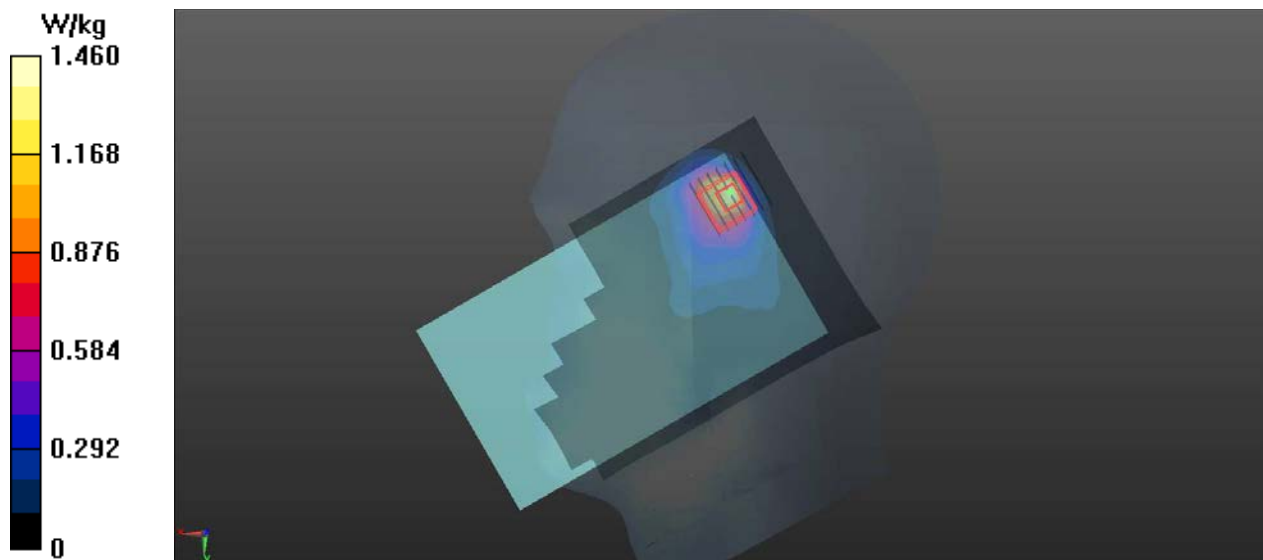
- **Zoom Scan (7x7x7)/Cube 0**: Measurement grid: dx=5mm, dy=5mm, dz=5mm

Reference Value = 10.31 V/m; Power Drift = 0.03 dB

Peak SAR (extrapolated) = 1.80 W/kg

**SAR(1 g) = 0.820 W/kg; SAR(10 g) = 0.390 W/kg**

Maximum value of SAR (measured) = 1.35 W/kg



## P02 WLAN5G\_802.11a\_Right Cheek\_Ch56

### DUT: A20210104W002

Communication System: 802.11a; Frequency: 5280 MHz; Duty Cycle: 1:1.03

Medium: HSL5G\_0121 Medium parameters used:  $f = 5280$  MHz;  $\sigma = 4.752$  S/m;  $\epsilon_r = 37.256$ ;  $\rho = 1000$  kg/m<sup>3</sup>

Ambient Temperature : 23.5°C; Liquid Temperature : 22.6°C

#### DASY5 Configuration:

- Probe: EX3DV4 - SN3873; ConvF(4.8, 4.8, 4.8); Calibrated: 2020/08/27;
- Sensor-Surface: 1.4mm (Mechanical Surface Detection)
- Electronics: DAE4 Sn1341; Calibrated: 2020/08/26
- Phantom: Front Phantom with CRP v5.0; Type: QD000P40CD; Serial: TP:1695
- Measurement SW: DASY52, Version 52.8 (8); SEMCAD X Version 14.6.10 (7331)

- **Area Scan (121x71x1):** Interpolated grid: dx=1.000 mm, dy=1.000 mm

Maximum value of SAR (interpolated) = 1.93 W/kg

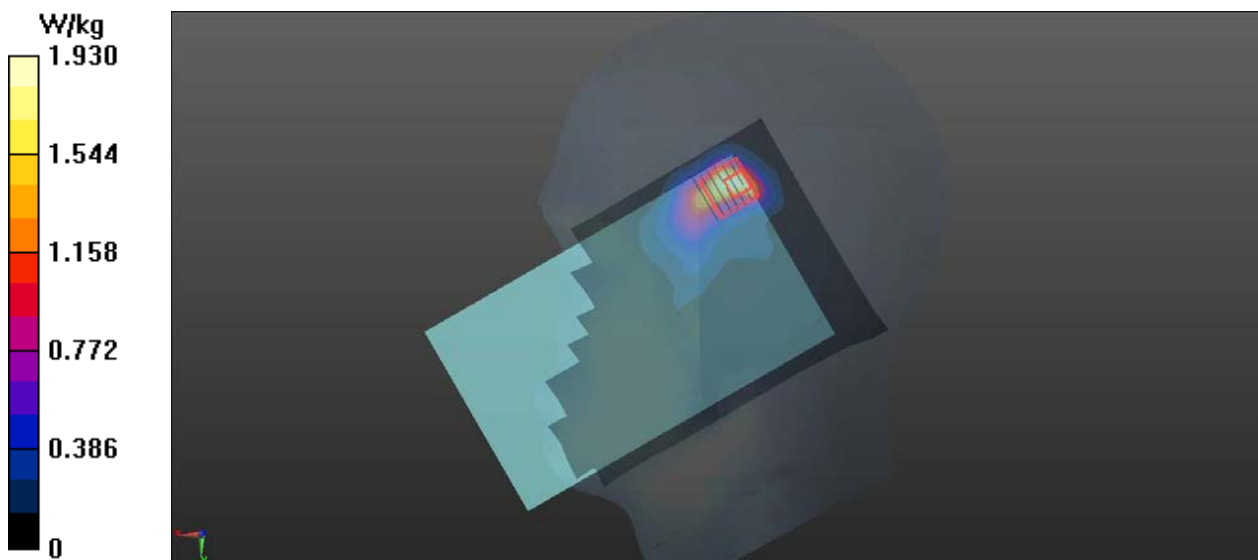
- **Zoom Scan (7x7x12)/Cube 0:** Measurement grid: dx=4mm, dy=4mm, dz=2mm

Reference Value = 2.738 V/m; Power Drift = 0.08 dB

Peak SAR (extrapolated) = 2.78 W/kg

**SAR(1 g) = 0.746 W/kg; SAR(10 g) = 0.254 W/kg**

Maximum value of SAR (measured) = 1.73 W/kg





### P03 WLAN5G\_802.11a\_Right Cheek\_Ch116

**DUT: A20210104W002**

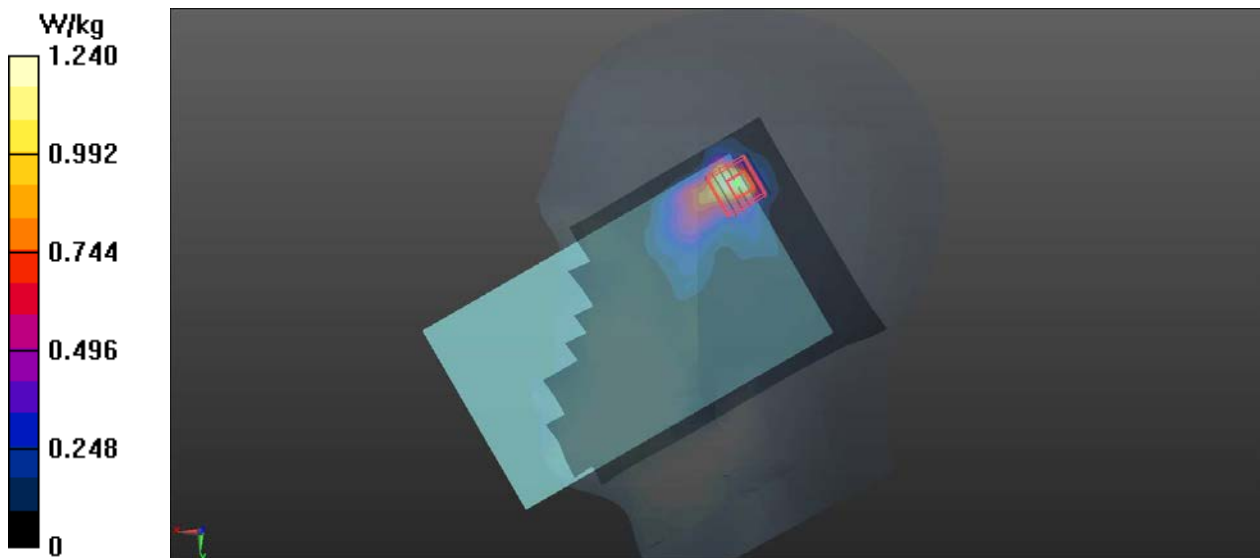
Communication System: 802.11a; Frequency: 5660 MHz; Duty Cycle: 1:1.03  
Medium: HSL5G\_0122 Medium parameters used:  $f = 5660$  MHz;  $\sigma = 5.13$  S/m;  $\epsilon_r = 36.756$ ;  $\rho = 1000$  kg/m<sup>3</sup>  
Ambient Temperature : 23.3°C; Liquid Temperature : 22.4°C

DASY5 Configuration:

- Probe: EX3DV4 - SN3873; ConvF(4.5, 4.5, 4.5); Calibrated: 2020/08/27;
- Sensor-Surface: 1.4mm (Mechanical Surface Detection)
- Electronics: DAE4 Sn1341; Calibrated: 2020/08/26
- Phantom: Front Phantom with CRP v5.0; Type: QD000P40CD; Serial: TP:1695
- Measurement SW: DASY52, Version 52.8 (8); SEMCAD X Version 14.6.10 (7331)

- **Area Scan (121x71x1):** Interpolated grid:  $dx=1.000$  mm,  $dy=1.000$  mm  
Maximum value of SAR (interpolated) = 1.24 W/kg

- **Zoom Scan (7x7x12)/Cube 0:** Measurement grid:  $dx=4$ mm,  $dy=4$ mm,  $dz=2$ mm  
Reference Value = 3.160 V/m; Power Drift = -0.07 dB  
Peak SAR (extrapolated) = 1.85 W/kg  
**SAR(1 g) = 0.453 W/kg; SAR(10 g) = 0.151 W/kg**  
Maximum value of SAR (measured) = 1.11 W/kg



## P04 WLAN5G\_802.11a\_Right Cheek\_Ch157

**DUT: A20210104W002**

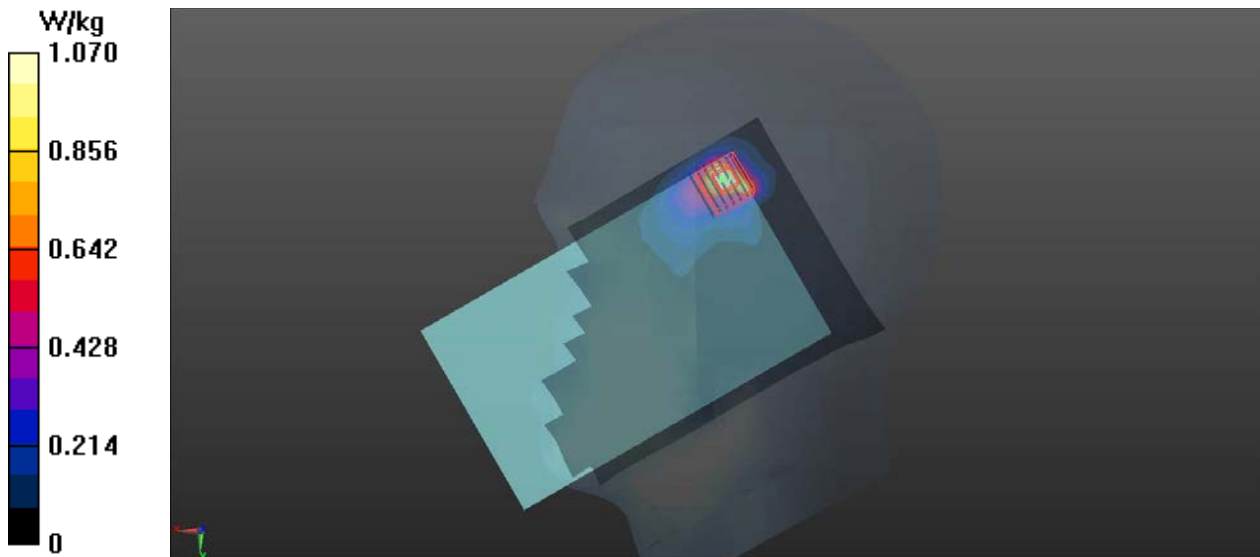
Communication System: 802.11a; Frequency: 5785 MHz; Duty Cycle: 1:1.03  
Medium: HSL5G\_0123 Medium parameters used:  $f = 5785$  MHz;  $\sigma = 5.253$  S/m;  $\epsilon_r = 36.59$ ;  $\rho = 1000$  kg/m<sup>3</sup>  
Ambient Temperature : 23.5°C; Liquid Temperature : 22.5°C

DASY5 Configuration:

- Probe: EX3DV4 - SN3873; ConvF(4.49, 4.49, 4.49); Calibrated: 2020/08/27;
- Sensor-Surface: 1.4mm (Mechanical Surface Detection)
- Electronics: DAE4 Sn1341; Calibrated: 2020/08/26
- Phantom: Front Phantom with CRP v5.0; Type: QD000P40CD; Serial: TP:1695
- Measurement SW: DASY52, Version 52.8 (8); SEMCAD X Version 14.6.10 (7331)

- **Area Scan (121x81x1):** Interpolated grid: dx=1.000 mm, dy=1.000 mm  
Maximum value of SAR (interpolated) = 1.07 W/kg

- **Zoom Scan (7x7x12)/Cube 0:** Measurement grid: dx=4mm, dy=4mm, dz=2mm  
Reference Value = 1.992 V/m; Power Drift = 0.02 dB  
Peak SAR (extrapolated) = 2.12 W/kg  
**SAR(1 g) = 0.489 W/kg; SAR(10 g) = 0.162 W/kg**  
Maximum value of SAR (measured) = 1.21 W/kg



## P05 BT\_GFSK\_Right Cheek\_Ch0

### DUT: A20210104W002

Communication System: BT; Frequency: 2402 MHz; Duty Cycle: 1:1.3

Medium: HSL2450\_0120 Medium parameters used:  $f = 2402$  MHz;  $\sigma = 1.755$  S/m;  $\epsilon_r = 40.167$ ;  $\rho = 1000$  kg/m<sup>3</sup>

Ambient Temperature : 23.4°C; Liquid Temperature : 22.6°C

#### DASY5 Configuration:

- Probe: EX3DV4 - SN3873; ConvF(7.27, 7.27, 7.27); Calibrated: 2020/08/27;
- Sensor-Surface: 1.4mm (Mechanical Surface Detection)
- Electronics: DAE4 Sn1341; Calibrated: 2020/08/26
- Phantom: Front Phantom with CRP v5.0; Type: QD000P40CD; Serial: TP:1695
- Measurement SW: DASY52, Version 52.8 (8); SEMCAD X Version 14.6.10 (7331)

- **Area Scan (101x171x1)**: Interpolated grid: dx=1.200 mm, dy=1.200 mm

Maximum value of SAR (interpolated) = 0.356 W/kg

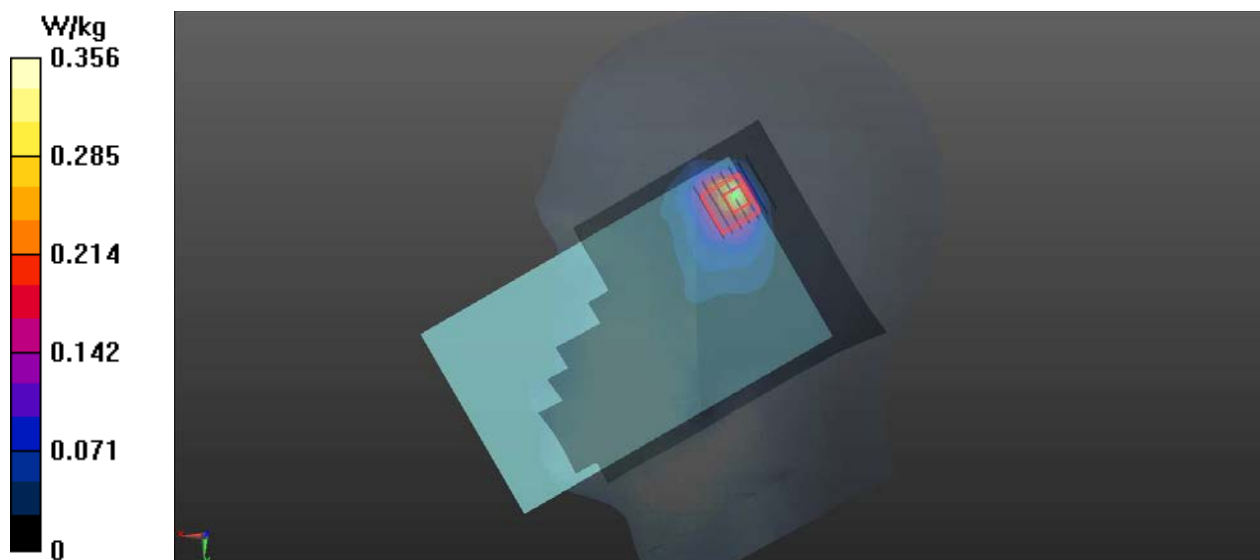
- **Zoom Scan (7x7x7)/Cube 0**: Measurement grid: dx=5mm, dy=5mm, dz=5mm

Reference Value = 4.177 V/m; Power Drift = 0.04 dB

Peak SAR (extrapolated) = 0.426 W/kg

**SAR(1 g) = 0.177 W/kg; SAR(10 g) = 0.083 W/kg**

Maximum value of SAR (measured) = 0.285 W/kg



## P06 WLAN2.4G\_802.11b\_Front Face\_10mm\_Ch1

**DUT: A20210104W002**

Communication System: 802.11b; Frequency: 2412 MHz; Duty Cycle: 1:1.01

Medium: HSL2450\_0120 Medium parameters used:  $f = 2412$  MHz;  $\sigma = 1.765$  S/m;  $\epsilon_r = 40.147$ ;  $\rho = 1000$  kg/m<sup>3</sup>

Ambient Temperature : 23.4°C; Liquid Temperature : 22.6°C

DASY5 Configuration:

- Probe: EX3DV4 - SN3873; ConvF(7.27, 7.27, 7.27); Calibrated: 2020/08/27;
- Sensor-Surface: 1.4mm (Mechanical Surface Detection)
- Electronics: DAE4 Sn1341; Calibrated: 2020/08/26
- Phantom: Front Phantom with CRP v5.0; Type: QD000P40CD; Serial: TP:1695
- Measurement SW: DASY52, Version 52.8 (8); SEMCAD X Version 14.6.10 (7331)

- **Area Scan (101x171x1)**: Interpolated grid: dx=1.200 mm, dy=1.200 mm

Maximum value of SAR (interpolated) = 0.530 W/kg

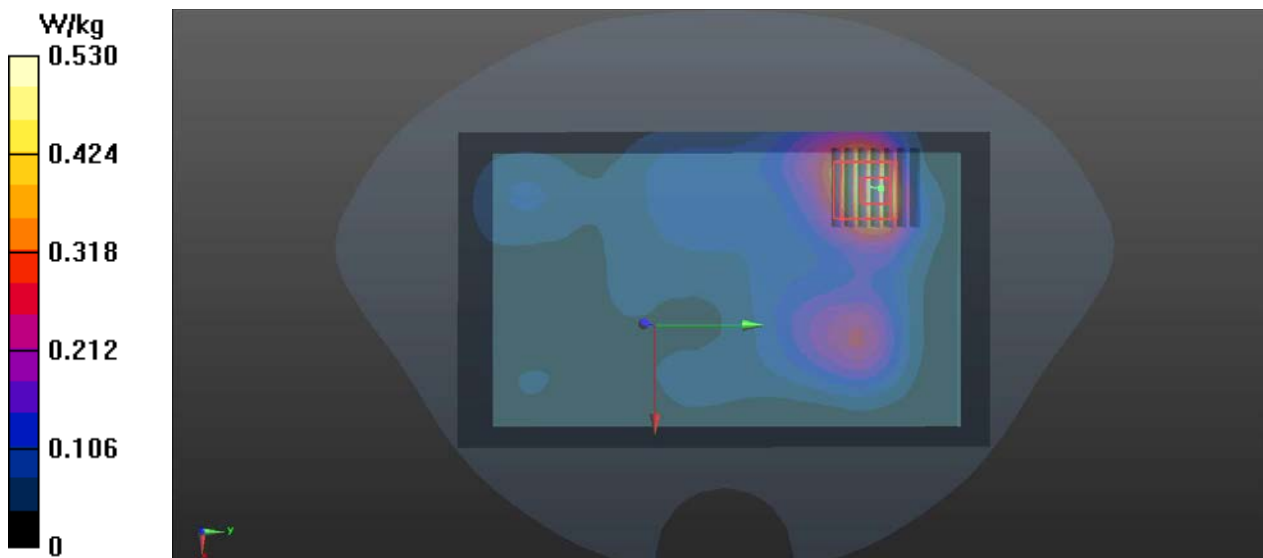
- **Zoom Scan (7x7x7)/Cube 0**: Measurement grid: dx=5mm, dy=5mm, dz=5mm

Reference Value = 4.490 V/m; Power Drift = 0.03 dB

Peak SAR (extrapolated) = 0.630 W/kg

**SAR(1 g) = 0.335 W/kg; SAR(10 g) = 0.177 W/kg**

Maximum value of SAR (measured) = 0.517 W/kg



## P07 WLAN5G\_802.11a\_Front Face\_10mm\_Ch52

**DUT: A20210104W002**

Communication System: 802.11a; Frequency: 5260 MHz; Duty Cycle: 1:1.03

Medium: HSL5G\_0121 Medium parameters used:  $f = 5260$  MHz;  $\sigma = 4.734$  S/m;  $\epsilon_r = 37.29$ ;  $\rho = 1000$  kg/m<sup>3</sup>

Ambient Temperature : 23.5°C; Liquid Temperature : 22.6°C

DASY5 Configuration:

- Probe: EX3DV4 - SN3873; ConvF(4.8, 4.8, 4.8); Calibrated: 2020/08/27;
- Sensor-Surface: 1.4mm (Mechanical Surface Detection)
- Electronics: DAE4 Sn1341; Calibrated: 2020/08/26
- Phantom: Front Phantom with CRP v5.0; Type: QD000P40CD; Serial: TP:1695
- Measurement SW: DASY52, Version 52.8 (8); SEMCAD X Version 14.6.10 (7331)

- **Area Scan (121x201x1):** Interpolated grid: dx=1.000 mm, dy=1.000 mm  
Maximum value of SAR (interpolated) = 0.598 W/kg

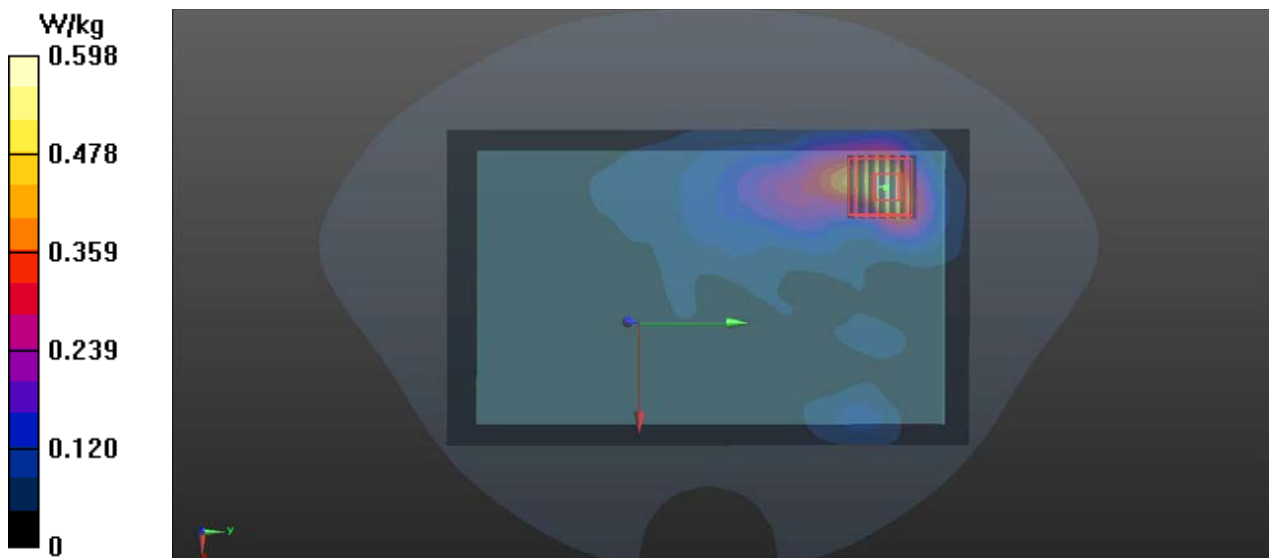
- **Zoom Scan (7x7x12)/Cube 0:** Measurement grid: dx=4mm, dy=4mm, dz=2mm

Reference Value = 1.907 V/m; Power Drift = -0.03 dB

Peak SAR (extrapolated) = 0.907 W/kg

**SAR(1 g) = 0.255 W/kg; SAR(10 g) = 0.099 W/kg**

Maximum value of SAR (measured) = 0.565 W/kg



## P08 WLAN5G\_802.11a\_Front Face\_10mm\_Ch116

**DUT: A20210104W002**

Communication System: 802.11a; Frequency: 5580 MHz; Duty Cycle: 1:1.03

Medium: HSL5G\_0122 Medium parameters used:  $f = 5580$  MHz;  $\sigma = 5.047$  S/m;  $\epsilon_r = 36.851$ ;  $\rho = 1000$  kg/m<sup>3</sup>

Ambient Temperature : 23.3°C; Liquid Temperature : 22.4°C

DASY5 Configuration:

- Probe: EX3DV4 - SN3873; ConvF(4.5, 4.5, 4.5); Calibrated: 2020/08/27;
- Sensor-Surface: 1.4mm (Mechanical Surface Detection)
- Electronics: DAE4 Sn1341; Calibrated: 2020/08/26
- Phantom: Front Phantom with CRP v5.0; Type: QD000P40CD; Serial: TP:1695
- Measurement SW: DASY52, Version 52.8 (8); SEMCAD X Version 14.6.10 (7331)

- **Area Scan (121x201x1):** Interpolated grid: dx=1.000 mm, dy=1.000 mm  
Maximum value of SAR (interpolated) = 0.339 W/kg

- **Zoom Scan (7x7x12)/Cube 0:** Measurement grid: dx=4mm, dy=4mm, dz=2mm  
Reference Value = 0.6060 V/m; Power Drift = 0.08 dB  
Peak SAR (extrapolated) = 0.531 W/kg  
**SAR(1 g) = 0.132 W/kg; SAR(10 g) = 0.049 W/kg**  
Maximum value of SAR (measured) = 0.314 W/kg



### P09 WLAN5G\_802.11a\_Front Face\_10mm\_Ch157

**DUT: A20210104W002**

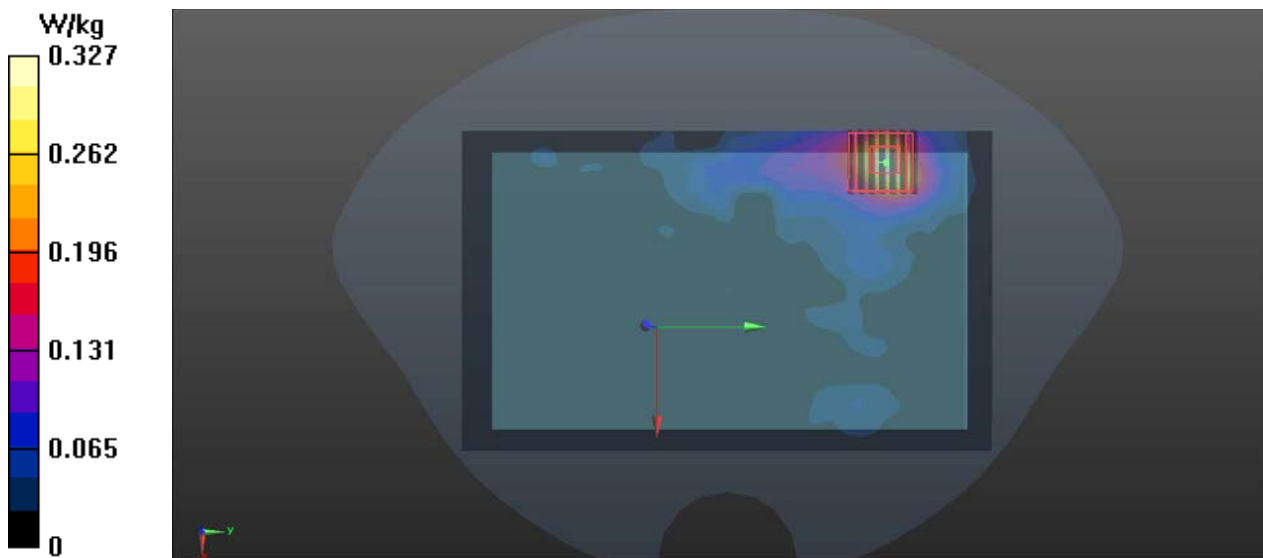
Communication System: 802.11a; Frequency: 5785 MHz; Duty Cycle: 1:1.03  
Medium: HSL5G\_0123 Medium parameters used:  $f = 5785 \text{ MHz}$ ;  $\sigma = 5.253 \text{ S/m}$ ;  $\epsilon_r = 36.59$ ;  $\rho = 1000 \text{ kg/m}^3$   
Ambient Temperature :  $23.5^\circ\text{C}$ ; Liquid Temperature :  $22.5^\circ\text{C}$

DASY5 Configuration:

- Probe: EX3DV4 - SN3873; ConvF(4.49, 4.49, 4.49); Calibrated: 2020/08/27;
- Sensor-Surface: 1.4mm (Mechanical Surface Detection)
- Electronics: DAE4 Sn1341; Calibrated: 2020/08/26
- Phantom: Front Phantom with CRP v5.0; Type: QD000P40CD; Serial: TP:1695
- Measurement SW: DASY52, Version 52.8 (8); SEMCAD X Version 14.6.10 (7331)

- **Area Scan (121x201x1):** Interpolated grid:  $dx=1.000 \text{ mm}$ ,  $dy=1.000 \text{ mm}$   
Maximum value of SAR (interpolated) =  $0.327 \text{ W/kg}$

- **Zoom Scan (7x7x12)/Cube 0:** Measurement grid:  $dx=4\text{mm}$ ,  $dy=4\text{mm}$ ,  $dz=2\text{mm}$   
Reference Value =  $0.9440 \text{ V/m}$ ; Power Drift =  $-0.00 \text{ dB}$   
Peak SAR (extrapolated) =  $0.546 \text{ W/kg}$   
**SAR(1 g) =  $0.177 \text{ W/kg}$ ; SAR(10 g) =  $0.066 \text{ W/kg}$**   
Maximum value of SAR (measured) =  $0.314 \text{ W/kg}$



## P10 BT\_GFSK\_Front Face\_10mm\_Ch0

### DUT: A20210104W002

Communication System: BT; Frequency: 2402 MHz; Duty Cycle: 1:1.3

Medium: HSL2450\_0120 Medium parameters used:  $f = 2402$  MHz;  $\sigma = 1.755$  S/m;  $\epsilon_r = 40.167$ ;  $\rho = 1000$  kg/m<sup>3</sup>

Ambient Temperature : 23.4°C; Liquid Temperature : 22.6°C

#### DASY5 Configuration:

- Probe: EX3DV4 - SN3873; ConvF(7.27, 7.27, 7.27); Calibrated: 2020/08/27;
- Sensor-Surface: 1.4mm (Mechanical Surface Detection)
- Electronics: DAE4 Sn1341; Calibrated: 2020/08/26
- Phantom: Front Phantom with CRP v5.0; Type: QD000P40CD; Serial: TP:1695
- Measurement SW: DASY52, Version 52.8 (8); SEMCAD X Version 14.6.10 (7331)

- **Area Scan (101x171x1)**: Interpolated grid: dx=1.200 mm, dy=1.200 mm

Maximum value of SAR (interpolated) = 0.0629 W/kg

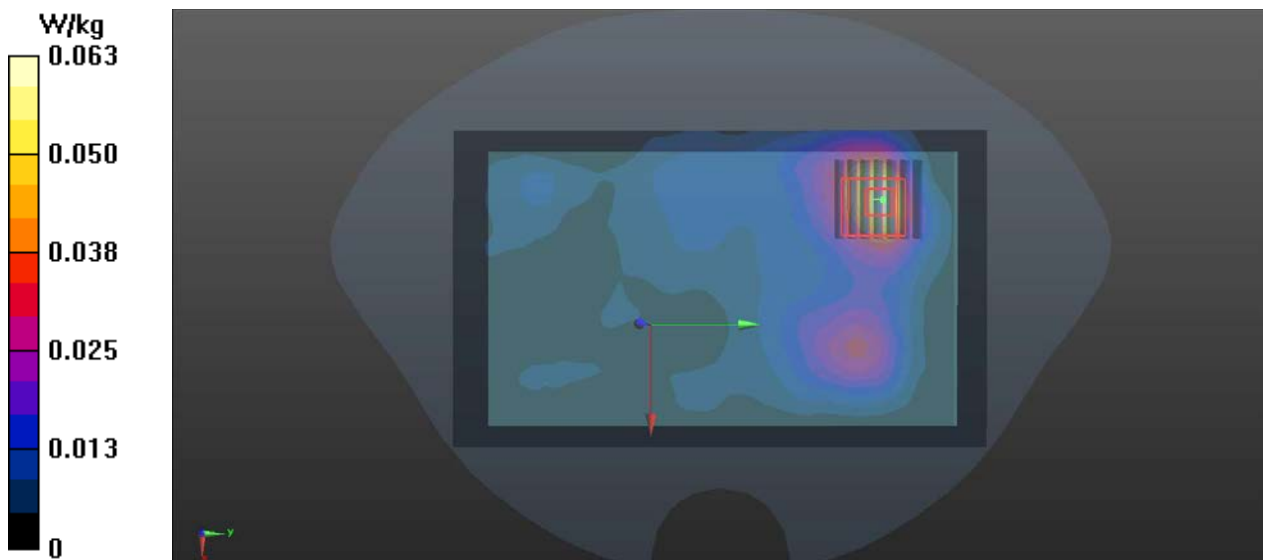
- **Zoom Scan (7x7x7)/Cube 0**: Measurement grid: dx=5mm, dy=5mm, dz=5mm

Reference Value = 1.467 V/m; Power Drift = -0.09 dB

Peak SAR (extrapolated) = 0.0690 W/kg

**SAR(1 g) = 0.036 W/kg; SAR(10 g) = 0.019 W/kg**

Maximum value of SAR (measured) = 0.0560 W/kg





## P11 WLAN2.4G\_802.11b\_Front Face\_0mm\_Ch1

### DUT: A20210104W001

Communication System: 802.11b; Frequency: 2412 MHz; Duty Cycle: 1:1.01

Medium: HSL2450\_0120 Medium parameters used:  $f = 2412$  MHz;  $\sigma = 1.765$  S/m;  $\epsilon_r = 40.147$ ;  $\rho = 1000$  kg/m<sup>3</sup>

Ambient Temperature : 23.4°C; Liquid Temperature : 22.6°C

#### DASY5 Configuration:

- Probe: EX3DV4 - SN3873; ConvF(7.27, 7.27, 7.27); Calibrated: 2020/08/27;
- Sensor-Surface: 1.4mm (Mechanical Surface Detection)
- Electronics: DAE4 Sn1341; Calibrated: 2020/08/26
- Phantom: Front Phantom with CRP v5.0; Type: QD000P40CD; Serial: TP:1695
- Measurement SW: DASY52, Version 52.8 (8); SEMCAD X Version 14.6.10 (7331)

- **Area Scan (101x171x1)**: Interpolated grid: dx=1.200 mm, dy=1.200 mm

Maximum value of SAR (interpolated) = 2.26 W/kg

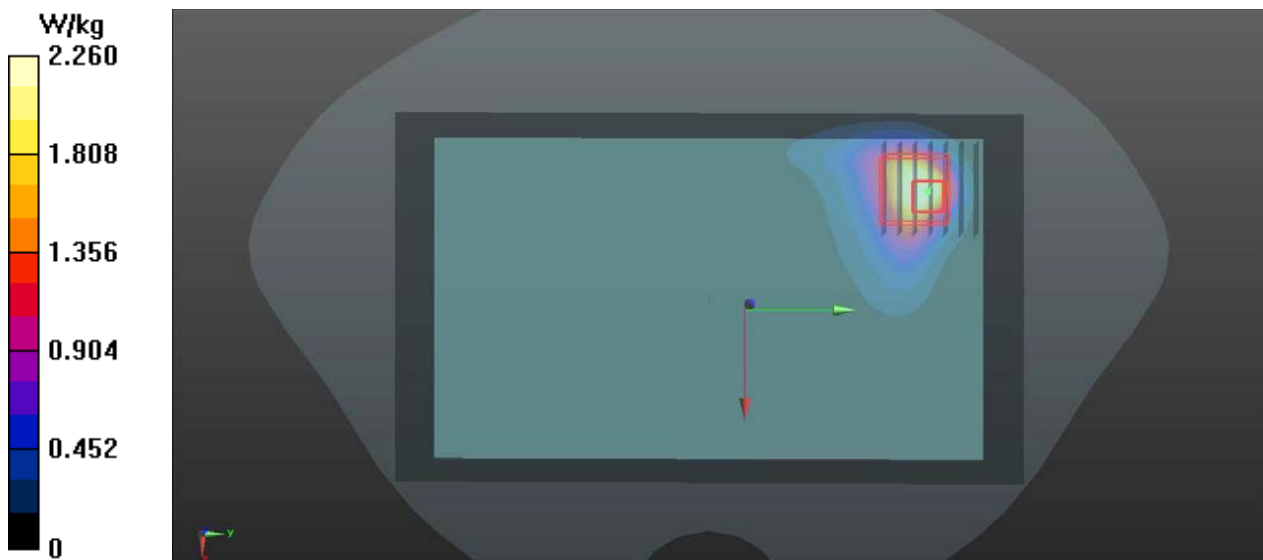
- **Zoom Scan (7x7x7)/Cube 0**: Measurement grid: dx=5mm, dy=5mm, dz=5mm

Reference Value = 0.4290 V/m; Power Drift = 0.06 dB

Peak SAR (extrapolated) = 5.21 W/kg

**SAR(1 g) = 1.59 W/kg; SAR(10 g) = 0.664 W/kg**

Maximum value of SAR (measured) = 3.09 W/kg



## P12 WLAN5G\_802.11a\_Front Face\_0mm\_Ch52

**DUT: A20210104W002**

Communication System: 802.11a; Frequency: 5260 MHz; Duty Cycle: 1:1.03

Medium: HSL5G\_0121 Medium parameters used:  $f = 5260$  MHz;  $\sigma = 4.734$  S/m;  $\epsilon_r = 37.29$ ;  $\rho = 1000$  kg/m<sup>3</sup>

Ambient Temperature : 23.5°C; Liquid Temperature : 22.6°C

DASY5 Configuration:

- Probe: EX3DV4 - SN3873; ConvF(4.8, 4.8, 4.8); Calibrated: 2020/08/27;
- Sensor-Surface: 1.4mm (Mechanical Surface Detection)
- Electronics: DAE4 Sn1341; Calibrated: 2020/08/26
- Phantom: Front Phantom with CRP v5.0; Type: QD000P40CD; Serial: TP:1695
- Measurement SW: DASY52, Version 52.8 (8); SEMCAD X Version 14.6.10 (7331)

- **Area Scan (121x201x1):** Interpolated grid: dx=1.000 mm, dy=1.000 mm

Maximum value of SAR (interpolated) = 8.37 W/kg

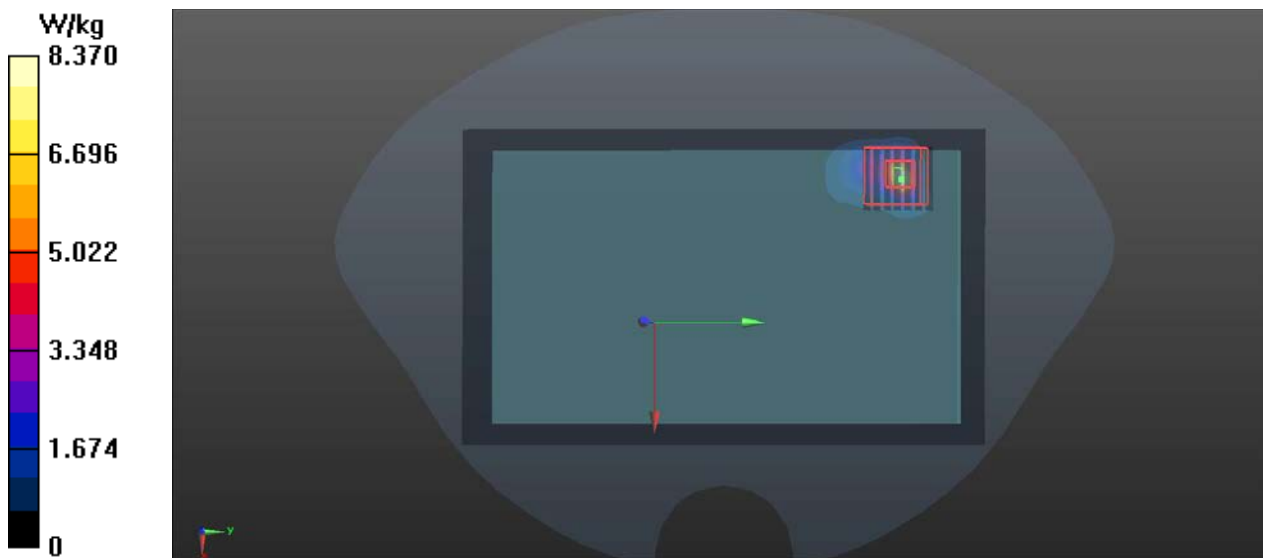
- **Zoom Scan (7x7x12)/Cube 0:** Measurement grid: dx=4mm, dy=4mm, dz=2mm

Reference Value = 0 V/m; Power Drift = 0.01 dB

Peak SAR (extrapolated) = 15.1 W/kg

**SAR(1 g) = 2.78 W/kg; SAR(10 g) = 0.767 W/kg**

Maximum value of SAR (measured) = 7.38 W/kg



### P13 WLAN5G\_802.11a\_Front Face\_0mm\_Ch116

**DUT: A20210104W002**

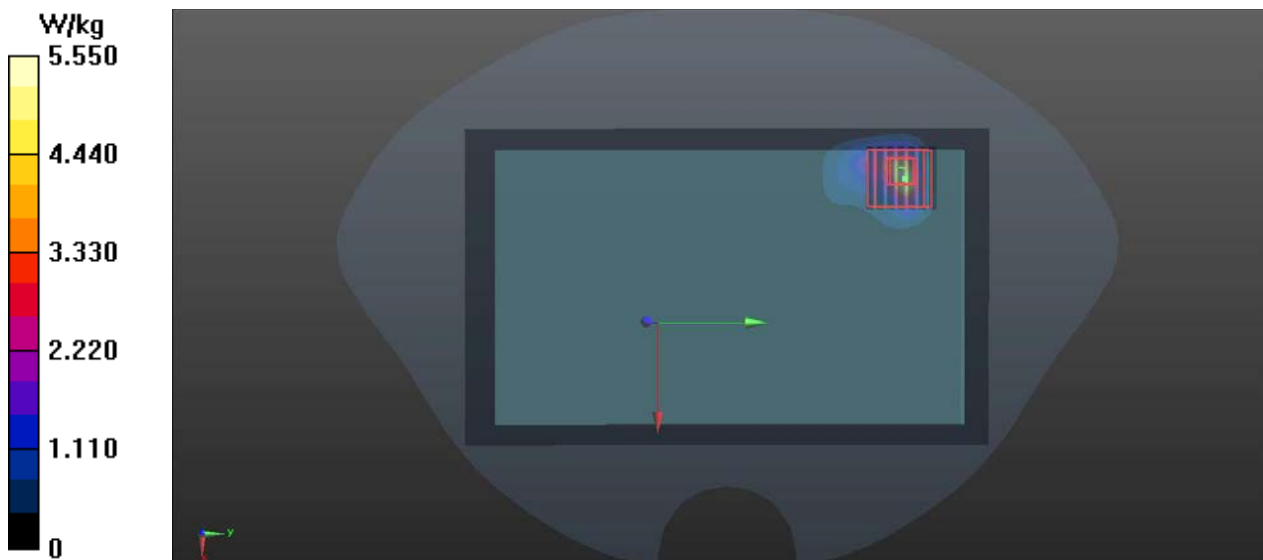
Communication System: 802.11a; Frequency: 5580 MHz; Duty Cycle: 1:1.03  
Medium: HSL5G\_0122 Medium parameters used:  $f = 5580$  MHz;  $\sigma = 5.047$  S/m;  $\epsilon_r = 36.851$ ;  $\rho = 1000$  kg/m<sup>3</sup>  
Ambient Temperature : 23.3°C; Liquid Temperature : 22.4°C

DASY5 Configuration:

- Probe: EX3DV4 - SN3873; ConvF(4.5, 4.5, 4.5); Calibrated: 2020/08/27;
- Sensor-Surface: 1.4mm (Mechanical Surface Detection)
- Electronics: DAE4 Sn1341; Calibrated: 2020/08/26
- Phantom: Front Phantom with CRP v5.0; Type: QD000P40CD; Serial: TP:1695
- Measurement SW: DASY52, Version 52.8 (8); SEMCAD X Version 14.6.10 (7331)

- **Area Scan (121x201x1):** Interpolated grid: dx=1.000 mm, dy=1.000 mm  
Maximum value of SAR (interpolated) = 5.55 W/kg

- **Zoom Scan (7x7x12)/Cube 0:** Measurement grid: dx=4mm, dy=4mm, dz=2mm  
Reference Value = 0 V/m; Power Drift = 0.09 dB  
Peak SAR (extrapolated) = 11.9 W/kg  
**SAR(1 g) = 2 W/kg; SAR(10 g) = 0.545 W/kg**  
Maximum value of SAR (measured) = 5.85 W/kg



### P14 WLAN5G\_802.11a\_Front Face\_0mm\_Ch157

**DUT: A20210104W001**

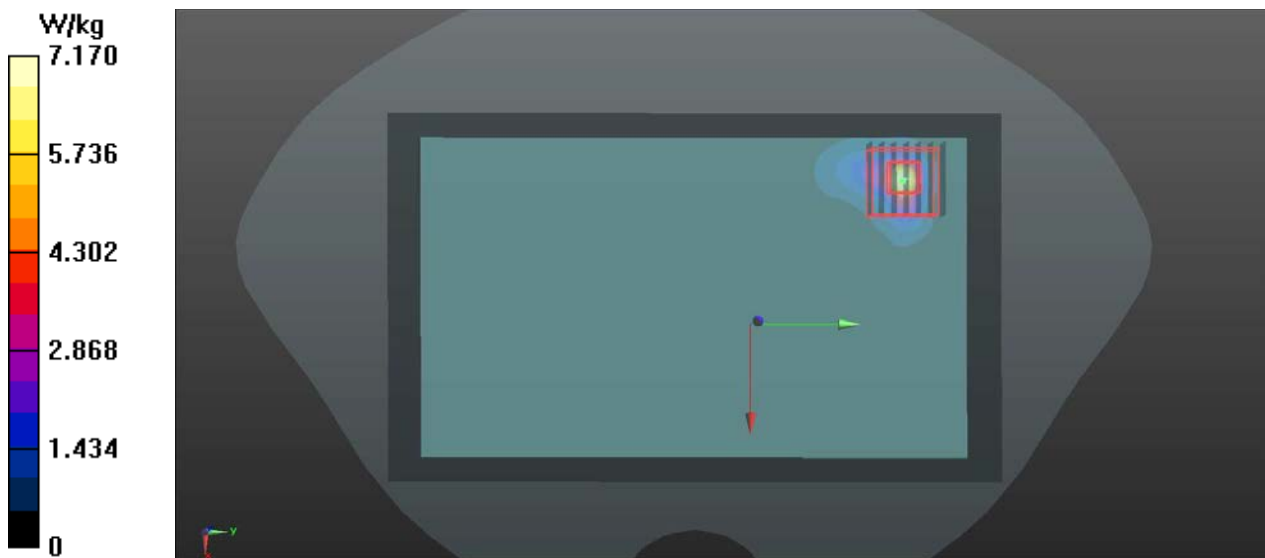
Communication System: 802.11a ; Frequency: 5785 MHz;Duty Cycle: 1:1.03  
Medium: HSL5G\_0123 Medium parameters used:  $f = 5785$  MHz;  $\sigma = 5.253$  S/m;  $\epsilon_r = 36.59$ ;  $\rho = 1000$  kg/m<sup>3</sup>  
Ambient Temperature : 23.5°C; Liquid Temperature : 22.5°C

DASY5 Configuration:

- Probe: EX3DV4 - SN3873; ConvF(4.49, 4.49, 4.49); Calibrated: 2020/08/27;
- Sensor-Surface: 1.4mm (Mechanical Surface Detection)
- Electronics: DAE4 Sn1341; Calibrated: 2020/08/26
- Phantom: Front Phantom with CRP v5.0; Type: QD000P40CD; Serial: TP:1695
- Measurement SW: DASY52, Version 52.8 (8); SEMCAD X Version 14.6.10 (7331)

- **Area Scan (81x71x1):** Interpolated grid: dx=1.000 mm, dy=1.000 mm  
Maximum value of SAR (interpolated) = 5.76 W/kg

- **Zoom Scan (7x7x12)/Cube 0:** Measurement grid: dx=4mm, dy=4mm, dz=2mm  
Reference Value = 0 V/m; Power Drift = 0.00 dB  
Peak SAR (extrapolated) = 15.6 W/kg  
**SAR(1 g) = 2.4 W/kg; SAR(10 g) = 0.641 W/kg**  
Maximum value of SAR (measured) = 7.17 W/kg



## P15 BT\_GFSK\_Front Face\_0mm\_Ch0

### DUT: A20210104W001

Communication System: BT; Frequency: 2402 MHz; Duty Cycle: 1:1.3

Medium: HSL2450\_0120 Medium parameters used:  $f = 2402$  MHz;  $\sigma = 1.755$  S/m;  $\epsilon_r = 40.167$ ;  $\rho = 1000$  kg/m<sup>3</sup>

Ambient Temperature : 23.4°C; Liquid Temperature : 22.6°C

#### DASY5 Configuration:

- Probe: EX3DV4 - SN3873; ConvF(7.27, 7.27, 7.27); Calibrated: 2020/08/27;
- Sensor-Surface: 1.4mm (Mechanical Surface Detection)
- Electronics: DAE4 Sn1341; Calibrated: 2020/08/26
- Phantom: Front Phantom with CRP v5.0; Type: QD000P40CD; Serial: TP:1695
- Measurement SW: DASY52, Version 52.8 (8); SEMCAD X Version 14.6.10 (7331)

- **Area Scan (101x171x1)**: Interpolated grid: dx=1.200 mm, dy=1.200 mm

Maximum value of SAR (interpolated) = 0.728 W/kg

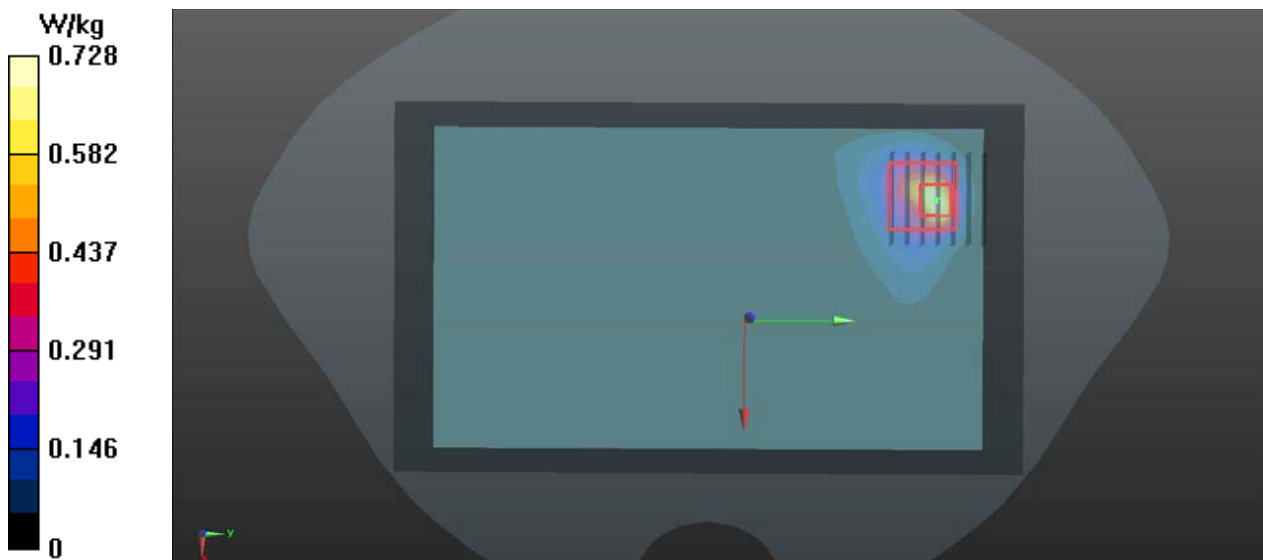
- **Zoom Scan (7x7x7)/Cube 0**: Measurement grid: dx=5mm, dy=5mm, dz=5mm

Reference Value = 0.1960 V/m; Power Drift = 0.03 dB

Peak SAR (extrapolated) = 1.11 W/kg

**SAR(1 g) = 0.329 W/kg; SAR(10 g) = 0.136 W/kg**

Maximum value of SAR (measured) = 0.640 W/kg





## **Appendix C. Calibration Certificate for Probe and Dipole**

The SPEAG calibration certificates are shown as follows.





In Collaboration with  
**s p e a g**  
 CALIBRATION LABORATORY



中国认可  
 国际互认  
 校准  
 CALIBRATION  
 CNAS L0570

Add: No.51 Xueyuan Road, Haidian District, Beijing, 100191, China  
 Tel: +86-10-62304633-2079 Fax: +86-10-62304633-2504  
 E-mail: cttl@chinattl.com http://www.chinattl.cn

Client **ADT**

Certificate No: **Z20-60321**

## CALIBRATION CERTIFICATE

Object **D2450V2 - SN: 893**

Calibration Procedure(s) **FF-Z11-003-01**  
**Calibration Procedures for dipole validation kits**

Calibration date: **August 27, 2020**

This calibration Certificate documents the traceability to national standards, which realize the physical units of measurements(SI). The measurements and the uncertainties with confidence probability are given on the following pages and are part of the certificate.

All calibrations have been conducted in the closed laboratory facility: environment temperature(22±3)°C and humidity<70%.

Calibration Equipment used (M&TE critical for calibration)

Primary Standards	ID #	Cal Date(Calibrated by, Certificate No.)	Scheduled Calibration
Power Meter NRP2	106276	12-May-20 (CTTL, No.J20X02965)	May-21
Power sensor NRP6A	101369	12-May-20 (CTTL, No.J20X02965)	May-21
ReferenceProbe EX3DV4	SN 3617	30-Jan-20(SPEAG,No.EX3-3617_Jan20)	Jan-21
DAE4	SN 771	10-Feb-20(CTTL-SPEAG,No.Z20-60017)	Feb-21
Secondary Standards	ID #	Cal Date(Calibrated by, Certificate No.)	Scheduled Calibration
Signal Generator E4438C	MY49071430	25-Feb-20 (CTTL, No.J20X00516)	Feb-21
NetworkAnalyzer E5071C	MY46110673	10-Feb-20 (CTTL, No.J20X00515)	Feb-21

	Name	Function	Signature
Calibrated by:	Zhao Jing	SAR Test Engineer	
Reviewed by:	Lin Hao	SAR Test Engineer	
Approved by:	Qi Dianyuan	SAR Project Leader	

Issued: September 2, 2020

This calibration certificate shall not be reproduced except in full without written approval of the laboratory.





Add: No.51 Xueyuan Road, Haidian District, Beijing, 100191, China  
Tel: +86-10-62304633-2079 Fax: +86-10-62304633-2504  
E-mail: cttl@chinattl.com http://www.chinattl.cn

### Glossary:

TSL	tissue simulating liquid
ConvF	sensitivity in TSL / NORM <sub>x,y,z</sub>
N/A	not applicable or not measured

### Calibration is Performed According to the Following Standards:

- IEEE Std 1528-2013, "IEEE Recommended Practice for Determining the Peak Spatial-Averaged Specific Absorption Rate (SAR) in the Human Head from Wireless Communications Devices: Measurement Techniques", June 2013
- IEC 62209-1, "Measurement procedure for assessment of specific absorption rate of human exposure to radio frequency fields from hand-held and body-mounted wireless communication devices- Part 1: Device used next to the ear (Frequency range of 300MHz to 6GHz)", July 2016
- IEC 62209-2, "Procedure to measure the Specific Absorption Rate (SAR) For wireless communication devices used in close proximity to the human body (frequency range of 30MHz to 6GHz)", March 2010
- KDB865664, SAR Measurement Requirements for 100 MHz to 6 GHz

### Additional Documentation:

- DASY4/5 System Handbook

### Methods Applied and Interpretation of Parameters:

- Measurement Conditions:* Further details are available from the Validation Report at the end of the certificate. All figures stated in the certificate are valid at the frequency indicated.
- Antenna Parameters with TSL:* The dipole is mounted with the spacer to position its feed point exactly below the center marking of the flat phantom section, with the arms oriented parallel to the body axis.
- Feed Point Impedance and Return Loss:* These parameters are measured with the dipole positioned under the liquid filled phantom. The impedance stated is transformed from the measurement at the SMA connector to the feed point. The Return Loss ensures low reflected power. No uncertainty required.
- Electrical Delay:* One-way delay between the SMA connector and the antenna feed point. No uncertainty required.
- SAR measured:* SAR measured at the stated antenna input power.
- SAR normalized:* SAR as measured, normalized to an input power of 1 W at the antenna connector.
- SAR for nominal TSL parameters:* The measured TSL parameters are used to calculate the nominal SAR result.

The reported uncertainty of measurement is stated as the standard uncertainty of Measurement multiplied by the coverage factor  $k=2$ , which for a normal distribution Corresponds to a coverage probability of approximately 95%.





Add: No.51 Xueyuan Road, Haidian District, Beijing, 100191, China  
Tel: +86-10-62304633-2079 Fax: +86-10-62304633-2504  
E-mail: cttl@chinattl.com http://www.chinattl.cn

### Measurement Conditions

DASY system configuration, as far as not given on page 1.

DASY Version	DASY52	V52.10.4
Extrapolation	Advanced Extrapolation	
Phantom	Triple Flat Phantom 5.1C	
Distance Dipole Center - TSL	10 mm	with Spacer
Zoom Scan Resolution	dx, dy, dz = 5 mm	
Frequency	2450 MHz $\pm$ 1 MHz	

### Head TSL parameters

The following parameters and calculations were applied.

	Temperature	Permittivity	Conductivity
Nominal Head TSL parameters	22.0 °C	39.2	1.80 mho/m
Measured Head TSL parameters	(22.0 $\pm$ 0.2) °C	39.5 $\pm$ 6 %	1.79 mho/m $\pm$ 6 %
Head TSL temperature change during test	<1.0 °C	----	----

### SAR result with Head TSL

SAR averaged over 1 $cm^3$ (1 g) of Head TSL	Condition	
SAR measured	250 mW input power	13.2 W/kg
SAR for nominal Head TSL parameters	normalized to 1W	<b>53.1 W/kg <math>\pm</math> 18.8 % (k=2)</b>
SAR averaged over 10 $cm^3$ (10 g) of Head TSL	Condition	
SAR measured	250 mW input power	6.07 W/kg
SAR for nominal Head TSL parameters	normalized to 1W	<b>24.4 W/kg <math>\pm</math> 18.7 % (k=2)</b>



Add: No.51 Xueyuan Road, Haidian District, Beijing, 100191, China  
Tel: +86-10-62304633-2079 Fax: +86-10-62304633-2504  
E-mail: cttl@chinattl.com http://www.chinattl.cn

## Appendix (Additional assessments outside the scope of CNAS L0570)

### Antenna Parameters with Head TSL

Impedance, transformed to feed point	54.1Ω+ 5.96 jΩ
Return Loss	- 23.2dB

### General Antenna Parameters and Design

Electrical Delay (one direction)	1.024 ns
----------------------------------	----------

After long term use with 100W radiated power, only a slight warming of the dipole near the feedpoint can be measured.

The dipole is made of standard semirigid coaxial cable. The center conductor of the feeding line is directly connected to the second arm of the dipole. The antenna is therefore short-circuited for DC-signals. On some of the dipoles, small end caps are added to the dipole arms in order to improve matching when loaded according to the position as explained in the "Measurement Conditions" paragraph. The SAR data are not affected by this change. The overall dipole length is still according to the Standard. No excessive force must be applied to the dipole arms, because they might bend or the soldered connections near the feedpoint may be damaged.

### Additional EUT Data

Manufactured by	SPEAG
-----------------	-------