

## DASY8 Module WPT Measurement Report

### Device under test

Info:  
V-Coil35085\_240816

### Tool info

DASY software version:  
DASY8 Module WPT 2.6.0.5002

Probe model, serial no. and configuration date:  
MAGPy-8H3D+E3Dv2, WP000211, 2024/05/16

Software version:  
2.0.63, backend: 2.2.22

### Scan info

Center location:  
x: 60.91 mm, y: -149.23 mm, z: 36.65 mm

Dimensions:  
x: 433.0 mm, y: 520.4 mm, z: 36.7 mm

Resolution:  
x: 7.33 mm, y: 7.33 mm, z: 7.33 mm

Completed on:  
2024/08/16

### Measurement results

#### Maximum H-field [RMS]:

MAGNITUDE: 128.98 A/m

x: 65.86 A/m, y: 94.50 A/m, z: 58.05 A/m

#### Maximum H-field location relative to DUT:

x: 55.00 mm, y: -143.00 mm, z: 8.50 mm

#### Maximum E-field [RMS]:

MAGNITUDE: 199.84 V/m

x: 9.05 V/m, y: 7.62 V/m, z: 199.49 V/m

#### Maximum E-field location relative to DUT:

x: 88.00 mm, y: 176.00 mm, z: 0.00 mm

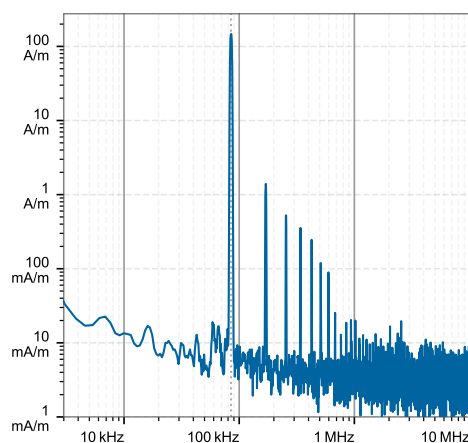
#### Distance to -20.0 dB boundary:

63.08 mm

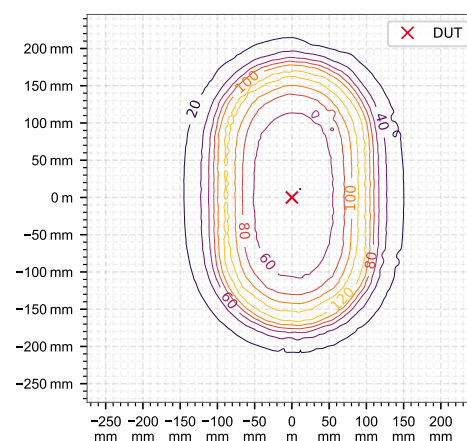
#### Offset relative to DUT:

x: 0.00 m, y: 0.00 m, z: 1.00 mm

### H-field magnitude [RMS] at maximum location



### H-field magnitude [RMS] at lowest plane



### Incident fields and induced fields in the homogeneous phantom at the peak frequency

Distance [mm]	Peak incident fields [RMS]				Peak E <sub>ind</sub> [V/m, RMS]			Peak J <sub>ind</sub> [A/m <sup>2</sup> , RMS]	psSAR [mW/kg]		H-field extent
	H <sub>inc</sub> [A/m]	E <sub>inc</sub> [V/m]	Cube avg.	Local	Line avg.	Surface avg.	1g avg.	10g avg.	-20 dB radius [mm]		
0.00	195	200	3.34	3.37	3.38	2.36	6.56	4.91	184		
2.00	178	183	3.15	3.18	3.19	2.23	5.88	4.46	186		

### Compliance evaluation (Field values at the peak frequency)

Distance [mm]	ICNIRP 2010/2020				ICNIRP 1998				IEEE 2019				FCC				HC Code 6			
	PH <sub>inc</sub> [A/m]	PE <sub>inc</sub> [V/m]	PE <sub>ind</sub> [V/m]	psSAR [mW/kg]	PH <sub>inc</sub> [A/m]	PE <sub>inc</sub> [V/m]	PJ <sub>ind</sub> [A/m <sup>2</sup> ]	psSAR [mW/kg]	PH <sub>inc</sub> [A/m]	PE <sub>inc</sub> [V/m]	PE <sub>ind</sub> [V/m]	psSAR [mW/kg]	PH <sub>inc</sub> [A/m]	PE <sub>inc</sub> [V/m]	PE <sub>ind</sub> [V/m]	psSAR [mW/kg]	PH <sub>inc</sub> [A/m]	PE <sub>inc</sub> [V/m]	PE <sub>ind</sub> [V/m]	psSAR [mW/kg]
0.00	195	200	25.3	4.91	195	200	2.36	4.91	195	200	13.1	4.91	195	200	N/A	6.56	195	200	36.0	6.56
2.00	178	183	23.9	4.46	178	183	2.23	4.46	178	183	12.4	4.46	178	183	N/A	5.88	178	183	34.1	5.88

Coverage factors:  $w_{E_{ind, cube avg.}} = [7.56, 7.59]$ ,  $w_{E_{ind, local}} = [10.67, 10.72]$ ,  $w_{E_{ind, line avg.}} = [3.88, 3.90]$

### Compliance evaluation (Exposure ratios) (with multi-frequency enhancement, total field evaluation, coverage evaluation)

Distance [mm]	ICNIRP 2010/2020				ICNIRP 1998				IEEE 2019				FCC				HC Code 6									
	RL		BR		RL		BR		ERL		DRL		MPE		BR		RL		BR							
	PH <sub>inc</sub>	PE <sub>inc</sub>	PE <sub>ind</sub>	psSAR	PH <sub>inc</sub>	PE <sub>inc</sub>	PJ <sub>ind</sub>	psSAR	PH <sub>inc</sub>	PE <sub>inc</sub>	PE <sub>ind</sub>	psSAR	PH <sub>inc</sub>	PE <sub>inc</sub>	PE <sub>ind</sub>	psSAR	PH <sub>inc</sub>	PE <sub>inc</sub>	PE <sub>ind</sub>	psSAR						
	NS	TH	NS	TH	N/A	N/A	NS	TH	NS	TH	NS	TH	NS	TH	N/A	N/A	NS	TH	NS	TH	NS	TH				
0.00	9.29	N/A	10.3	N/A	2.2	N/A	39.0	13.1	14.0	N/A	1.2	N/A	1.39	N/A	0.74	N/A	2.17	6.13	N/A	N/A	2.17	N/A	10.3	N/A	3.14	N/A
2.00	8.5	N/A	9.44	N/A	2.09	N/A	35.7	12.0	13.2	N/A	1.09	N/A	1.28	N/A	0.70	N/A	1.98	5.62	N/A	N/A	1.98	N/A	9.44	N/A	2.97	N/A

Coverage factors:  $w_{E_{ind, cube avg.}} = [7.56, 7.59]$ ,  $w_{E_{ind, local}} = [10.67, 10.72]$ ,  $w_{E_{ind, line avg.}} = [3.88, 3.90]$

## DASY8 Module WPT Measurement Report

### Device under test

Info:  
V-Coil35085\_240819

### Tool info

DASY software version:  
DASY8 Module WPT 2.6.0.5002

Probe model, serial no. and configuration date:  
MAGPy-8H3D+E3Dv2, WP000211, 2024/05/16

Software version:  
2.0.63, backend: 2.2.22

### Scan info

Center location:  
x: 101.86 mm, y: -110.35 mm, z: 36.87 mm

Dimensions:  
x: 389.1 mm, y: 520.0 mm, z: 36.6 mm

Resolution:  
x: 7.33 mm, y: 7.33 mm, z: 7.33 mm

Completed on:  
2024/08/19

### Measurement results

#### Maximum H-field [RMS]:

MAGNITUDE: 123.85 A/m

x: 113.68 A/m, y: 23.91 A/m, z: 42.95 A/m

#### Maximum H-field location relative to DUT:

x: 91.67 mm, y: -91.67 mm, z: 8.50 mm

#### Maximum E-field [RMS]:

MAGNITUDE: 168.80 V/m

x: 15.77 V/m, y: 7.61 V/m, z: 167.89 V/m

#### Maximum E-field location relative to DUT:

x: 88.00 mm, y: 146.67 mm, z: 0.00 m

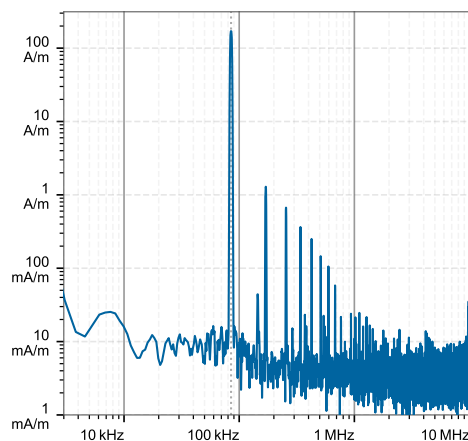
#### Distance to -20.0 dB boundary:

69.57 mm

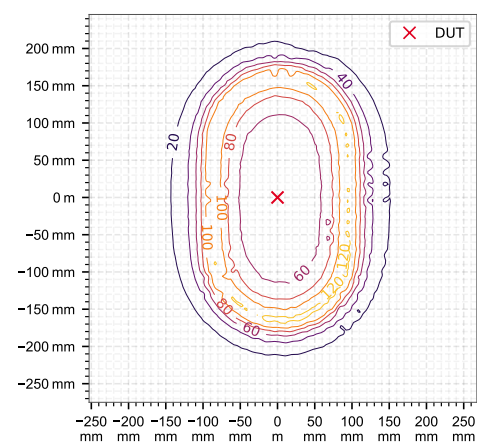
#### Offset relative to DUT:

x: 0.00 m, y: 0.00 m, z: 1.00 mm

### H-field magnitude [RMS] at maximum location



### H-field magnitude [RMS] at lowest plane



### Incident fields and induced fields in the homogeneous phantom at the peak frequency

Distance [mm]	Peak incident fields [RMS]				Peak E <sub>ind</sub> [V/m, RMS]			Peak J <sub>ind</sub> [A/m <sup>2</sup> , RMS]	psSAR [mW/kg]		H-field extent
	H <sub>inc</sub> [A/m]	E <sub>inc</sub> [V/m]	Cube avg.	Local	Line avg.	Surface avg.	1g avg.	10g avg.	-20 dB radius [mm]		
0.00	192	169	3.20	3.23	3.24	2.25	5.97	4.51	183		
2.00	175	155	3.02	3.05	3.05	2.13	5.37	4.11	186		

### Compliance evaluation (Field values at the peak frequency)

Distance [mm]	ICNIRP 2010/2020				ICNIRP 1998				IEEE 2019				FCC				HC Code 6			
	PH <sub>inc</sub>	PE <sub>inc</sub>	PE <sub>ind</sub>	psSAR	PH <sub>inc</sub>	PE <sub>inc</sub>	PJ <sub>ind</sub>	psSAR	PH <sub>inc</sub>	PE <sub>inc</sub>	PE <sub>ind</sub>	psSAR	PH <sub>inc</sub>	PE <sub>inc</sub>	PE <sub>ind</sub>	psSAR	PH <sub>inc</sub>	PE <sub>inc</sub>	PE <sub>ind</sub>	psSAR
0.00	192	169	24.2	4.51	192	169	2.26	4.51	192	169	12.6	4.51	192	169	N/A	5.97	192	169	34.4	5.97
2.00	175	155	22.9	4.11	175	155	2.13	4.11	175	155	11.9	4.11	175	155	N/A	5.37	175	155	32.6	5.37

Coverage factors:  $w_{E_{ind, cube avg.}} = [7.55, 7.59]$ ,  $w_{E_{ind, local}} = [10.67, 10.72]$ ,  $w_{E_{ind, line avg.}} = [3.88, 3.89]$

### Compliance evaluation (Exposure ratios) (with multi-frequency enhancement, total field evaluation, coverage evaluation)

Distance [mm]	ICNIRP 2010/2020				ICNIRP 1998				IEEE 2019				FCC				HC Code 6									
	RL		BR		RL		BR		ERL		DRL		MPE		BR		RL		BR							
	PH <sub>inc</sub>	PE <sub>inc</sub>	PE <sub>ind</sub>	psSAR	PH <sub>inc</sub>	PE <sub>inc</sub>	PJ <sub>ind</sub>	psSAR	PH <sub>inc</sub>	PE <sub>inc</sub>	PE <sub>ind</sub>	psSAR	PH <sub>inc</sub>	PE <sub>inc</sub>	PE <sub>ind</sub>	psSAR	PH <sub>inc</sub>	PE <sub>inc</sub>	PE <sub>ind</sub>	psSAR						
0.00	9.13	N/A	6.64	N/A	2.11	N/A	38.3	6.41	13.3	N/A	1.18	N/A	0.90	N/A	0.71	N/A	2.13	3.99	N/A	N/A	2.13	N/A	6.64	N/A	3.0	N/A
2.00	8.32	N/A	6.09	N/A	2.0	N/A	35.0	5.87	12.6	N/A	1.07	N/A	0.82	N/A	0.67	N/A	1.94	3.66	N/A	N/A	1.94	N/A	6.09	N/A	2.85	N/A

Coverage factors:  $w_{E_{ind, cube avg.}} = [7.55, 7.59]$ ,  $w_{E_{ind, local}} = [10.67, 10.72]$ ,  $w_{E_{ind, line avg.}} = [3.88, 3.89]$