

System Check_H2450_151008**DUT: Dipole 2450 MHz; Type: D2450V2; SN: 869;**

Communication System: UID 0, CW; Frequency: 2450 MHz; Duty Cycle: 1:1

Medium parameters used: $f = 2450$ MHz; $\sigma = 1.87$ S/m; $\epsilon_r = 40.258$; $\rho = 1000$ kg/m³

Ambient Temperature : 23.4 °C; Liquid Temperature : 22.2 °C

DASY Configuration:

- Probe: EX3DV4 - SN3932; ConvF(7.38, 7.38, 7.38); Calibrated: 01/30/2015;
- Sensor-Surface: 2mm (Mechanical Surface Detection), $z = 1.0, 31.0$
- Electronics: DAE4 Sn905; Calibrated: 07/16/2015
- Phantom: SAM Front; Type: Twin SAM; Serial: 1784
- DASY52 52.8.8(1222); SEMCAD X 14.6.10(7331)

Area Scan (9x9x1): Interpolated grid: $dx=12$ mm, $dy=12$ mm

Maximum value of SAR (interpolated) = 19.2 W/kg

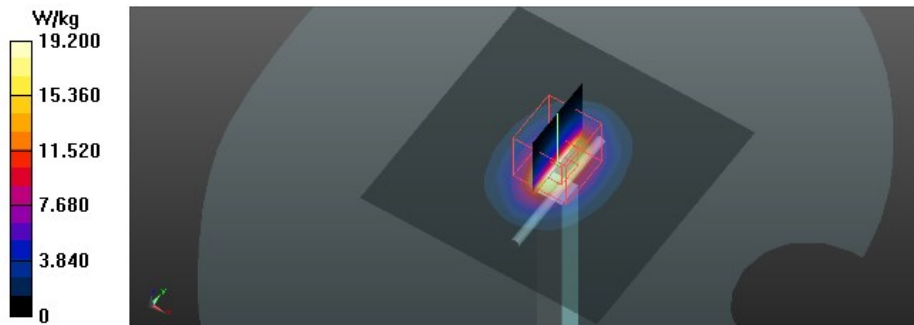
Zoom Scan (5x5x7)/Cube 0: Measurement grid: $dx=8$ mm, $dy=8$ mm, $dz=5$ mm

Reference Value = 103.1 V/m; Power Drift = -0.05 dB

Peak SAR (extrapolated) = 26.1 W/kg

SAR(1 g) = 13.3 W/kg; SAR(10 g) = 6.12 W/kg

Maximum value of SAR (measured) = 19.1 W/kg



System Check_B2450_151004**DUT: Dipole 2450 MHz; Type: D2450V2; SN: 869;**

Communication System: UID 0, CW; Frequency: 2450 MHz; Duty Cycle: 1:1

Medium parameters used: $f = 2450$ MHz; $\sigma = 1.999$ S/m; $\epsilon_r = 51.714$; $\rho = 1000$ kg/m³

Ambient Temperature : 23.2 °C; Liquid Temperature : 22.5 °C

DASY Configuration:

- Probe: EX3DV4 - SN3932; ConvF(7.6, 7.6, 7.6); Calibrated: 01/30/2015;
- Sensor-Surface: 2mm (Mechanical Surface Detection), $z = 1.0, 31.0$
- Electronics: DAE4 Sn905; Calibrated: 07/16/2015
- Phantom: ELI v5.0; Type: QDOVA002AA; Serial: TP:1222
- DASY52 52.8.8(1222); SEMCAD X 14.6.10(7331)

Area Scan (9x9x1): Interpolated grid: $dx=12$ mm, $dy=12$ mm

Maximum value of SAR (interpolated) = 18.4 W/kg

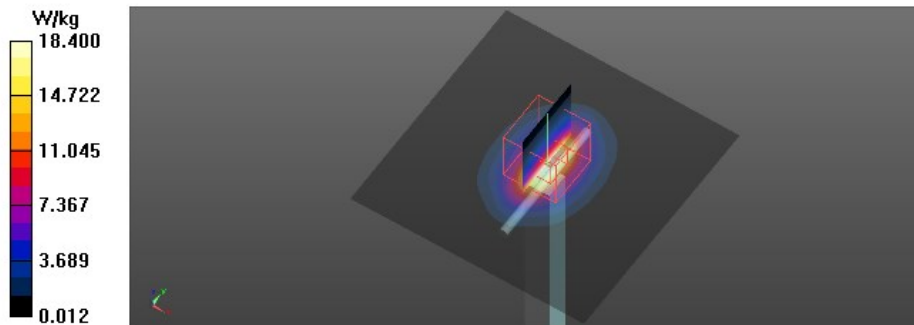
Zoom Scan (5x5x7)/Cube 0: Measurement grid: $dx=8$ mm, $dy=8$ mm, $dz=5$ mm

Reference Value = 98.64 V/m; Power Drift = -0.04 dB

Peak SAR (extrapolated) = 24.3 W/kg

SAR(1 g) = 12.1 W/kg; SAR(10 g) = 5.59 W/kg

Maximum value of SAR (measured) = 18.5 W/kg



Test Laboratory: BTL Inc.

Date: 02/03/2016

T06_802.11b_CH11_Right Cheek

DUT: 1509C320H;

Communication System: UID 0, IEEE 802.11b WiFi 2.4GHz (DSSS, 1Mbps) (0); Frequency: 2462 MHz; Duty Cycle: 1:1

Medium parameters used: $f = 2462$ MHz; $\sigma = 1.792$ S/m; $\epsilon_r = 39.258$; $\rho = 1000$ kg/m³

Ambient Temperature: 23.2 °C; Liquid Temperature: 22.5 °C

DASY Configuration:

- Probe: EX3DV4 - SN3661; ConvF(7.17, 7.17, 7.17); Calibrated: 04/24/2015;
- Sensor-Surface: 4mm (Mechanical Surface Detection), $z = 1.0, 31.0$
- Electronics: DAE4 Sn1390; Calibrated: 09/18/2015
- Phantom: SAM Right; Type: Twin SAM; Serial: 1896
- DASY52 52.8.8(1222); SEMCAD X 14.6.10(7331)

Area Scan (14x19x1): Interpolated grid: dx=12 mm, dy=12 mm

Maximum value of SAR (interpolated) = 0.605 W/kg

Zoom Scan (5x5x7)/Cube 0: Measurement grid: dx=8mm, dy=8mm, dz=5mm

Reference Value = 12.13 V/m; Power Drift = -0.05 dB

Peak SAR (extrapolated) = 1.12 W/kg

SAR(1 g) = 0.334 W/kg; SAR(10 g) = 0.176 W/kg

Maximum value of SAR (measured) = 0.549 W/kg

