

01_WLAN2.4GHz_802.11b 1Mbps_Bottom Face_0mm_Ch6

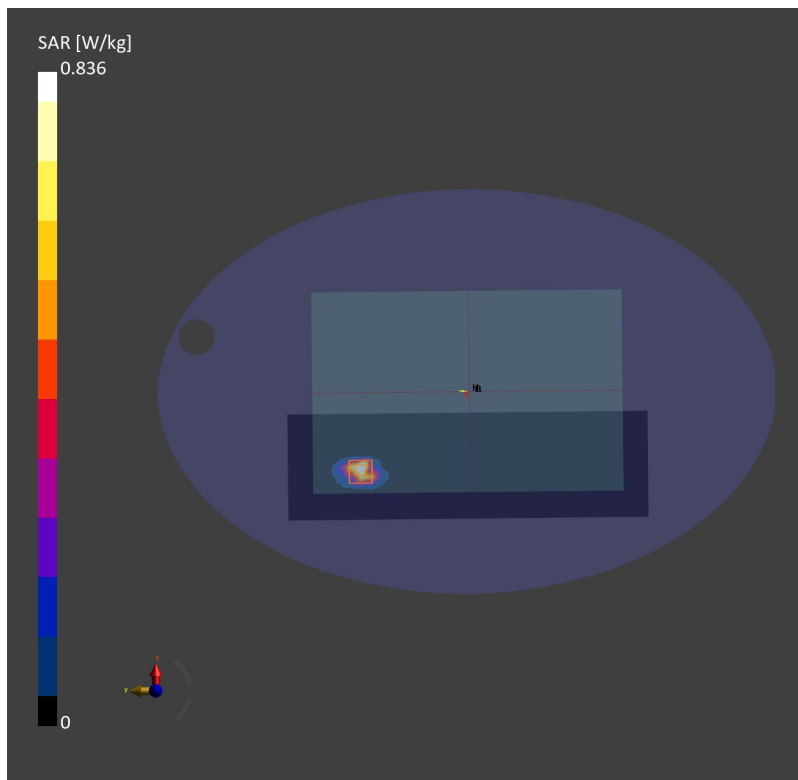
Communication System: WLAN 2.4GHz; Frequency: 2437.0
Medium: MSL. Medium parameters used: $f=2437.0$ MHz; $\sigma=1.84$ S/m; $\epsilon_r=38.6$
Ambient Temperature: 23.2°C; Liquid Temperature: 22.6°C

DASY6 Configuration:

- Probe: EX3DV4 - SN7734; ConvF(7.98, 7.98, 7.98); Calibrated: 2022-06-17
- Sensor-Surface: 1.4 mm
- Electronics: DAE4 Sn1691; Calibrated: 2022-12-12
- Phantom: ELI V8.0 (20deg probe tilt); Serial: 2135
- Measurement Software: cDASY6 V6.6.0.13926

Area Scan (100.0 mm x 340.0 mm): Measurement Grid: 12.0 mm x 12.0 mm
SAR (1g) = 0.748 W/kg; SAR (10g) = 0.290 W/kg;

Zoom Scan (30.0 mm x 30.0 mm x 30.0 mm): Measurement Grid: 5.0 mm x 5.0 mm x 5.0 mm
Power Drift = -0.02 dB
SAR (1g) = 0.836 W/kg; SAR (10g) = 0.261 W/kg;



02_Bluetooth_1Mbps_Edge 1_0mm_Ch0

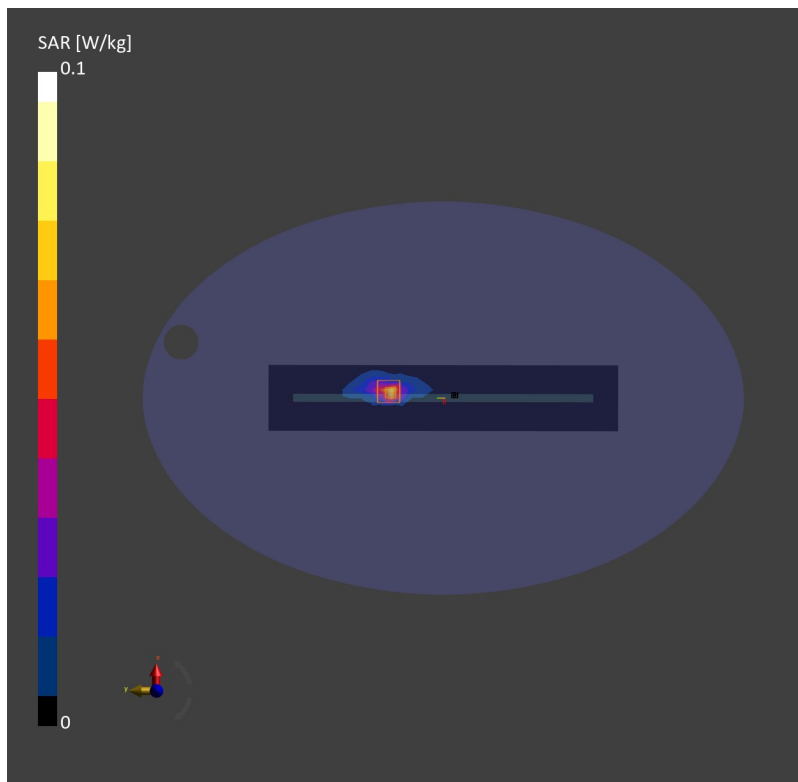
Communication System: ISM 2.4 GHz Band; Frequency: 2402.0
Medium: MSL. Medium parameters used: $f= 2402.0$ MHz; $\sigma= 1.80$ S/m; $\epsilon_r = 38.7$
Ambient Temperature: 23.2°C; Liquid Temperature: 22.6°C

DASY6 Configuration:

- Probe: EX3DV4 - SN7734; ConvF(7.98, 7.98, 7.98); Calibrated: 2022-06-17
- Sensor-Surface: 1.4 mm
- Electronics: DAE4 Sn1691; Calibrated: 2022-12-12
- Phantom: ELI V8.0 (20deg probe tilt); Serial: 2135
- Measurement Software: cDASY6 V6.6.0.13926

Area Scan (64.0 mm x 340.0 mm): Measurement Grid: 12.0 mm x 12.0 mm
SAR (1g) = 0.060 W/kg; SAR (10g) = 0.024 W/kg;

Zoom Scan (30.0 mm x 30.0 mm x 30.0 mm): Measurement Grid: 5.0 mm x 5.0 mm x 5.0 mm
Power Drift = -0.05 dB
SAR (1g) = 0.059 W/kg; SAR (10g) = 0.023 W/kg;



03_WLAN5GHz_802.11n-HT40 MCS0_Edge 1_0mm_Ch54

Communication System: WLAN 5GHz; Frequency: 5270.0

Medium: MSL. Medium parameters used: $f= 5270.0$ MHz; $\sigma= 4.66$ S/m; $\epsilon_r = 35.3$

Ambient Temperature: 23.2°C; Liquid Temperature: 22.9°C

DASY6 Configuration:

- Probe: EX3DV4 - SN7734; ConvF(5.76, 5.76, 5.76); Calibrated: 2022-06-17
- Sensor-Surface: 1.4 mm
- Electronics: DAE4 Sn1691; Calibrated: 2022-12-12
- Phantom: ELI V8.0 (20deg probe tilt); Serial: 2135
- Measurement Software: cDASY6 V6.6.0.13926

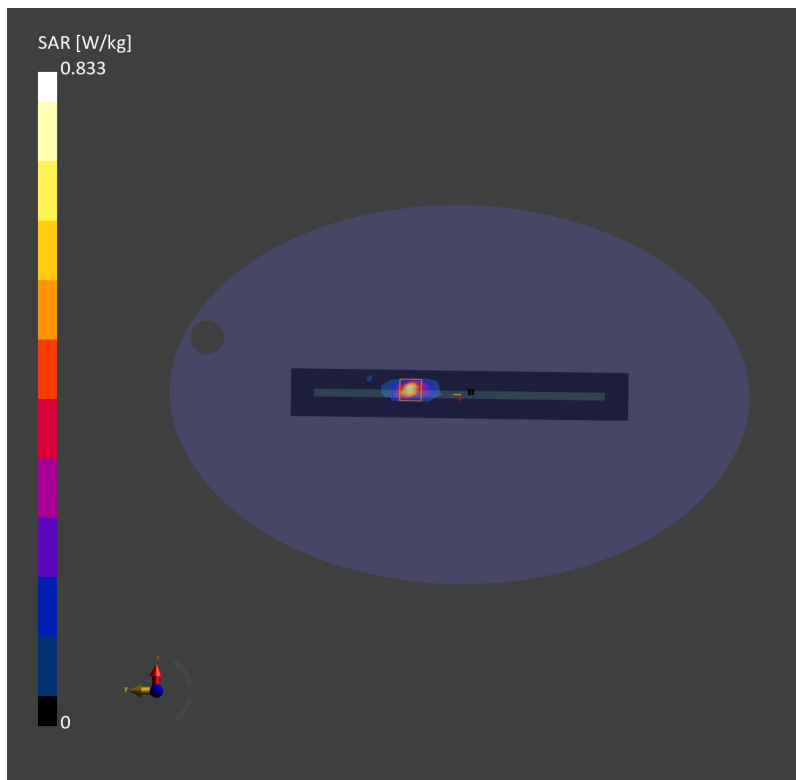
Area Scan (48.0 mm x 340.0 mm): Measurement Grid: 10.0 mm x 10.0 mm

SAR (1g) = 0.560 W/kg; SAR (10g) = 0.162 W/kg;

Zoom Scan (22.0 mm x 22.0 mm x 22.0 mm): Measurement Grid: 4.0 mm x 4.0 mm x 1.4 mm

Power Drift = -0.04 dB

SAR (1g) = 0.833 W/kg; SAR (10g) = 0.197 W/kg;



04_WLAN5GHz_802.11ac-VHT80 MCS0_Bottom Face_0mm_Ch122

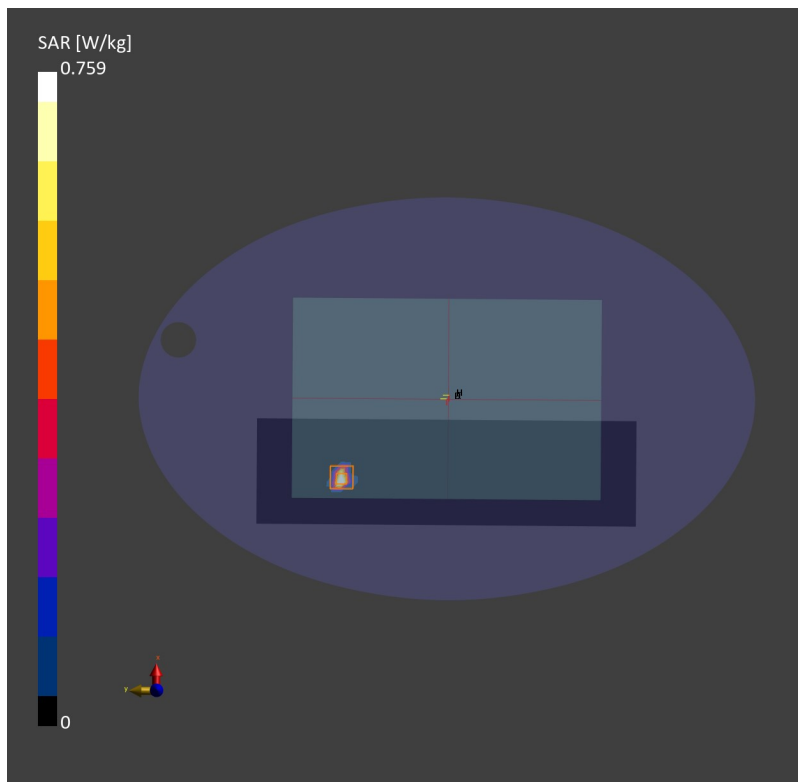
Communication System: WLAN 5GHz; Frequency: 5610.0
Medium: MSL. Medium parameters used: $f= 5610.0$ MHz; $\sigma= 5.00$ S/m; $\epsilon_r = 35.8$
Ambient Temperature: 23.2°C; Liquid Temperature: 22.9°C

DASY6 Configuration:

- Probe: EX3DV4 - SN7734; ConvF(5.01, 5.01, 5.01); Calibrated: 2022-06-17
- Sensor-Surface: 1.4 mm
- Electronics: DAE4 Sn1691; Calibrated: 2022-12-12
- Phantom: ELI V8.0 (20deg probe tilt); Serial: 2135
- Measurement Software: cDASY6 V6.6.0.13926

Area Scan (100.0 mm x 360.0 mm): Measurement Grid: 10.0 mm x 10.0 mm
SAR (1g) = 0.551 W/kg; SAR (10g) = 0.125 W/kg;

Zoom Scan (22.0 mm x 22.0 mm x 22.0 mm): Measurement Grid: 4.0 mm x 4.0 mm x 1.4 mm
Power Drift = -0.01 dB
SAR (1g) = 0.759 W/kg; SAR (10g) = 0.137 W/kg;



05_WLAN5GHz_802.11ac-VHT80 MCS0_Edge 1_0mm_Ch155

Communication System: WLAN 5GHz; Frequency: 5775.0

Medium: MSL. Medium parameters used: $f = 5775.0$ MHz; $\sigma = 5.12$ S/m; $\epsilon_r = 34.5$

Ambient Temperature: 23.2°C; Liquid Temperature: 22.9°C

DASY6 Configuration:

- Probe: EX3DV4 - SN7734; ConvF(5.13, 5.13, 5.13); Calibrated: 2022-06-17
- Sensor-Surface: 1.4 mm
- Electronics: DAE4 Sn1691; Calibrated: 2022-12-12
- Phantom: ELI V8.0 (20deg probe tilt); Serial: 2135
- Measurement Software: cDASY6 V6.6.0.13926

Area Scan (48.0 mm x 340.0 mm): Measurement Grid: 10.0 mm x 10.0 mm

SAR (1g) = 0.603 W/kg; SAR (10g) = 0.150 W/kg;

Zoom Scan (22.0 mm x 22.0 mm x 22.0 mm): Measurement Grid: 4.0 mm x 4.0 mm x 1.4 mm

Power Drift = 0.05 dB

SAR (1g) = 0.720 W/kg; SAR (10g) = 0.176 W/kg;

