

AX6786C POGO Antenna

Product Specification

Entry Name	AX6786C POGO
Frequency Channel	Main GSM B2/3/5/8 WB1/2/4/5/6/8/19 LTEB1/2/3/4/5/7/8/12/13/14/17/19/20/25/26/28/ 29/30/38/40/41/66/71 DIV:750~960MHz, 1805~2700MHz WiFi: 2.4g/5g, BT, GPS
Supplier Name	INNOWAVE

1. Type of Antenna:

Main : PIFA

GPS/ WIFI: PIFA

DIV: PIFA

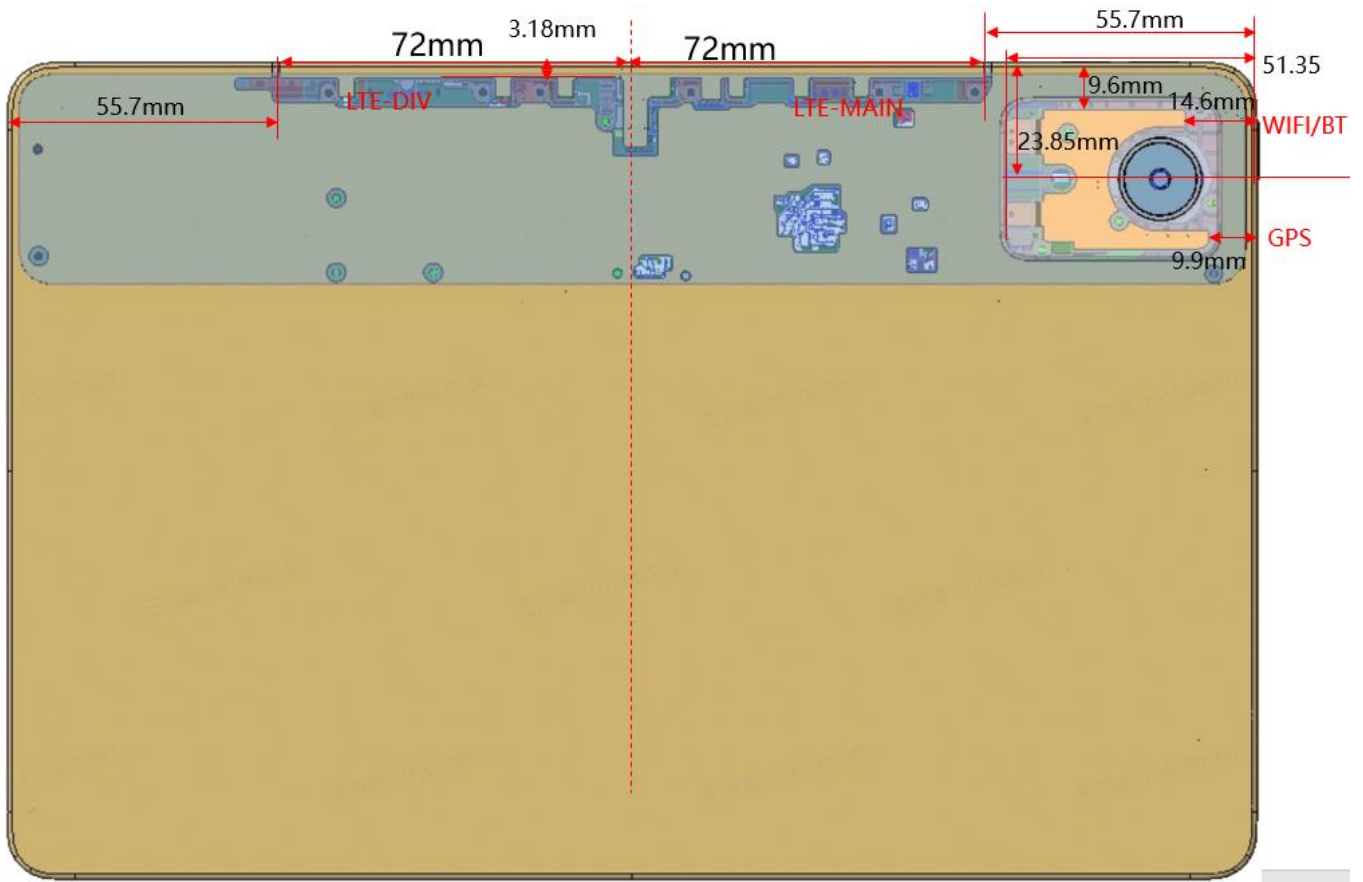
Model No:

RX-AX6786C-WIFI+GPS LTE-POGO-T83

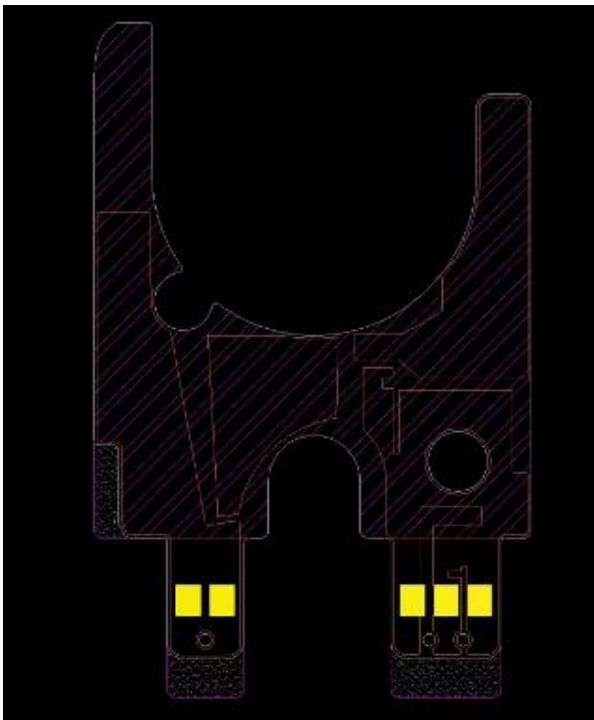
(The red characters above will automatically upgrade with the upgrade of the version)

Antenna attachment type: Fixed/Internal mounted

2. Antenna Area



GPS/ WIFI ANT



Main ANT**Using a frame to make metal without a separate physical antenna****DIV ANT****Using a frame to make metal without a separate physical antenna****3. Efficiency and Gain****MAIN- Efficiency and Gain**

BAND	Peak Gain(dBi)
WB1/LTE B1	-0.52
GSM1900/WB2/LTE B2	-1.1
GSM850/WB5 (6/19)/LTE B5/19/20	-1.88
LTE B7/38/41	-0.9
LTE B12/17	-4.97
LTE B13	-3.18
LTE B14	-3.23
LTE B25	-0.9
LTE B26	-1.97
LTE B30/40	-1.64
LTE28	-4
GSM900/WB8/LTE B8	-2.53

GSM1800/W4/LTE B3/4/66	-0.32
LTE B71	-2.92

GPS/WIFI Efficiency and Gain

WiFi: **-1.93dBi@2.4G;**

5G:

Fre (MHZ)	Peak Gain(dBi)	Average Gain(dB)
Band1	-3.56	-6.33
Band2	-3.72	-6.06
Band3	-3.36	-6.11
Band4	-3.27	-6.2

GPS: -3.36dBi

BT: -1.93dBi

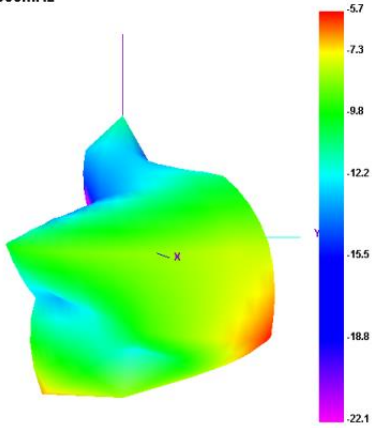
4. 3D Directional Pattern

MAIN ANT 3D

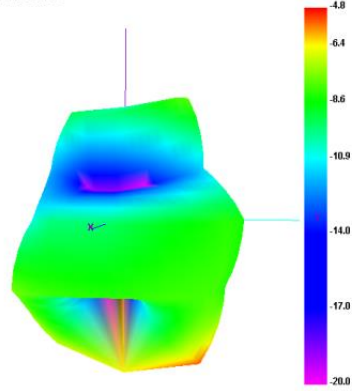
700 MHZ

790MHZ

700.000MHz

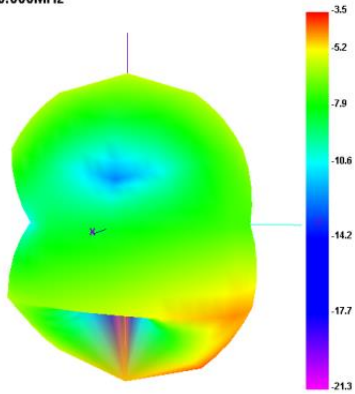


790.000MHz



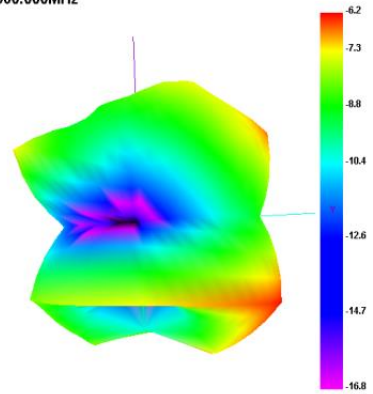
870MHZ

870.000MHz



960MHZ

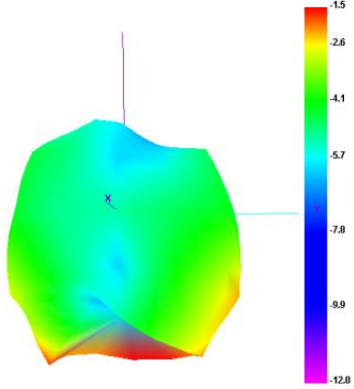
960.000MHz



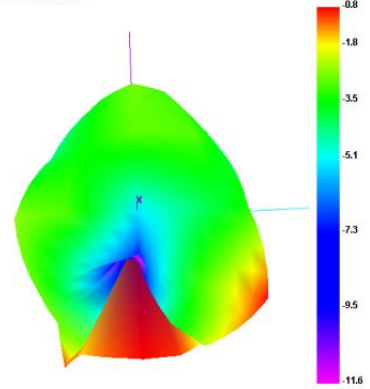
1710 MHZ

1980MHZ

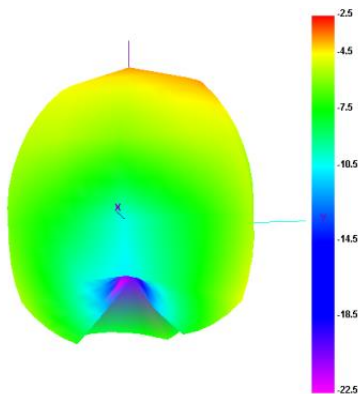
1700.000MHz



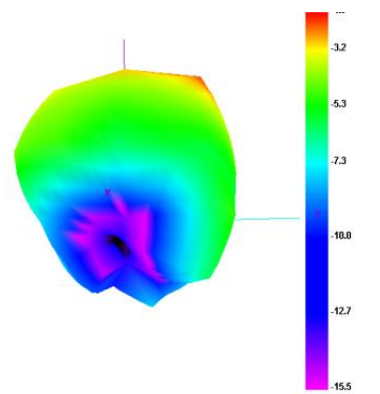
1980.000MHz



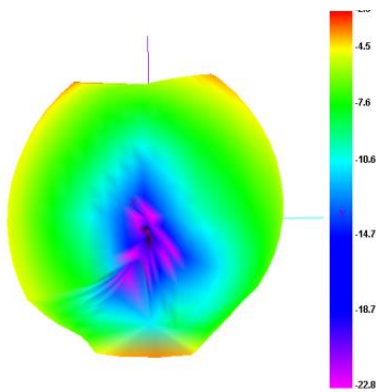
2170 MHZ



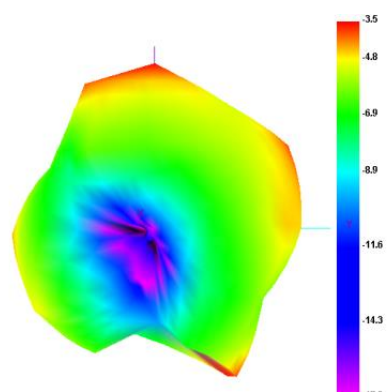
2300MHZ



2500MHZ



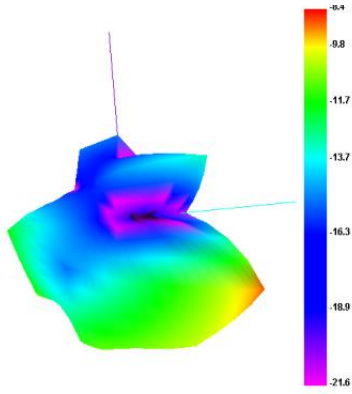
2700MHZ



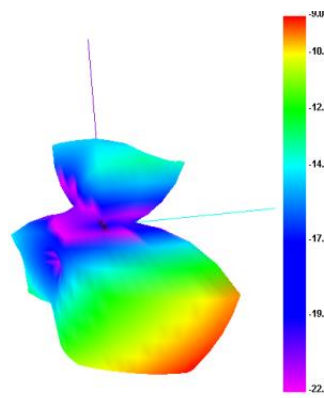
1) DIV ANT 3D

760MHZ

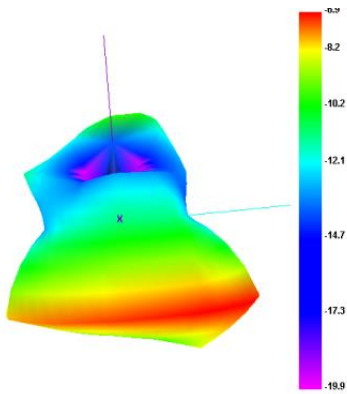
790MHZ



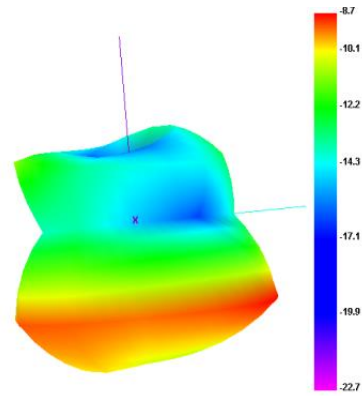
870MHZ



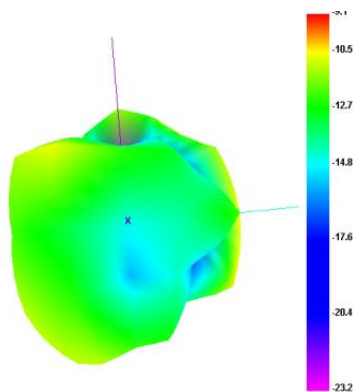
960MHZ



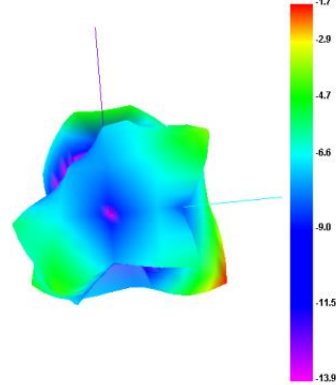
1810MHZ



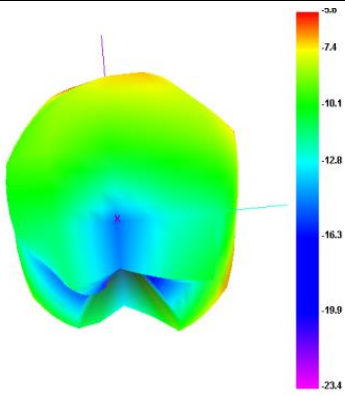
1990MHZ



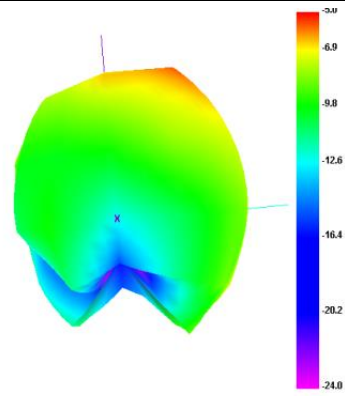
2170MHZ



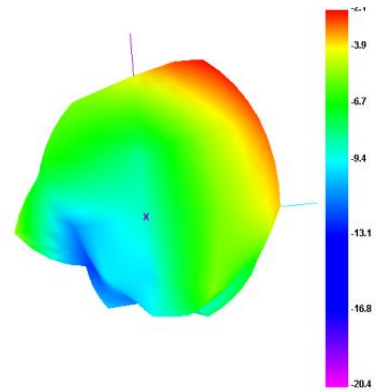
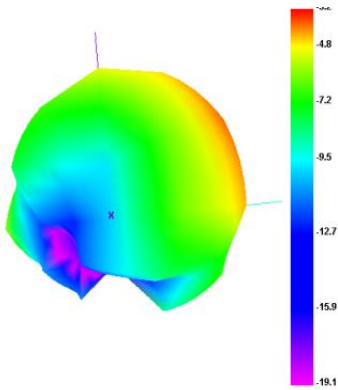
2300MHZ



2500 MHZ

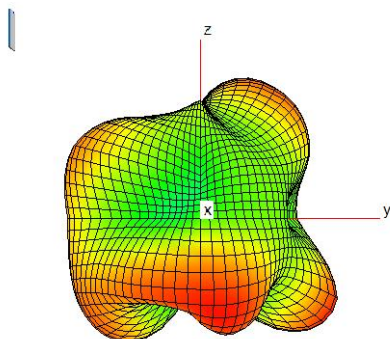


2700 MHZ



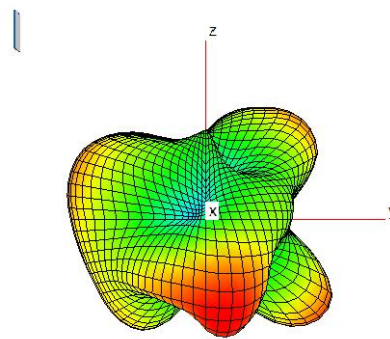
2) GPS/wifi/BT ANT 3D

1550MHZ

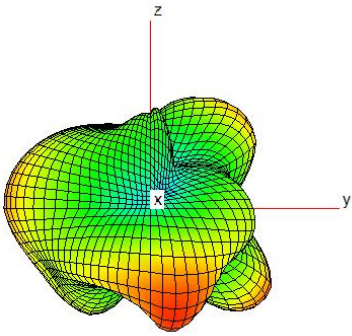


1600MHZ

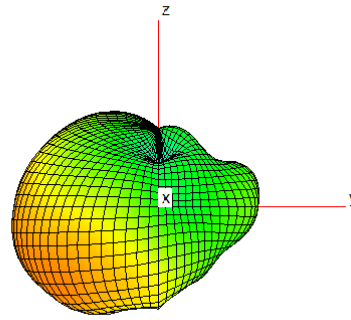
1575MHZ



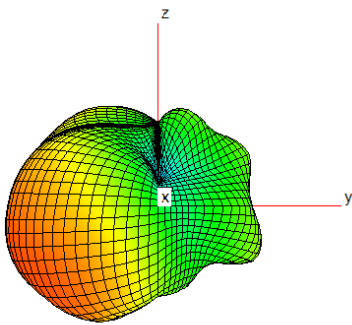
2400MHZ



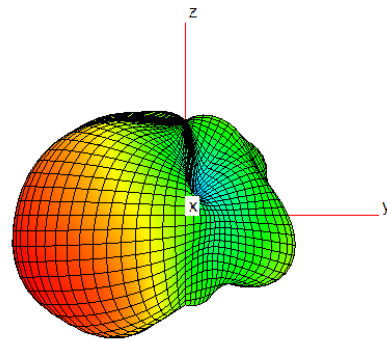
2450MHZ



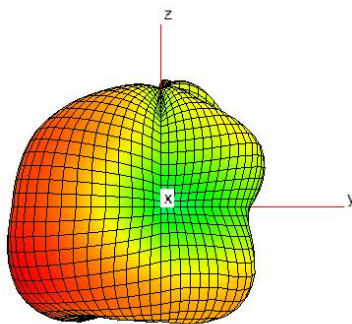
2500MHZ



5140MHZ



5460MHZ



5860MHZ

