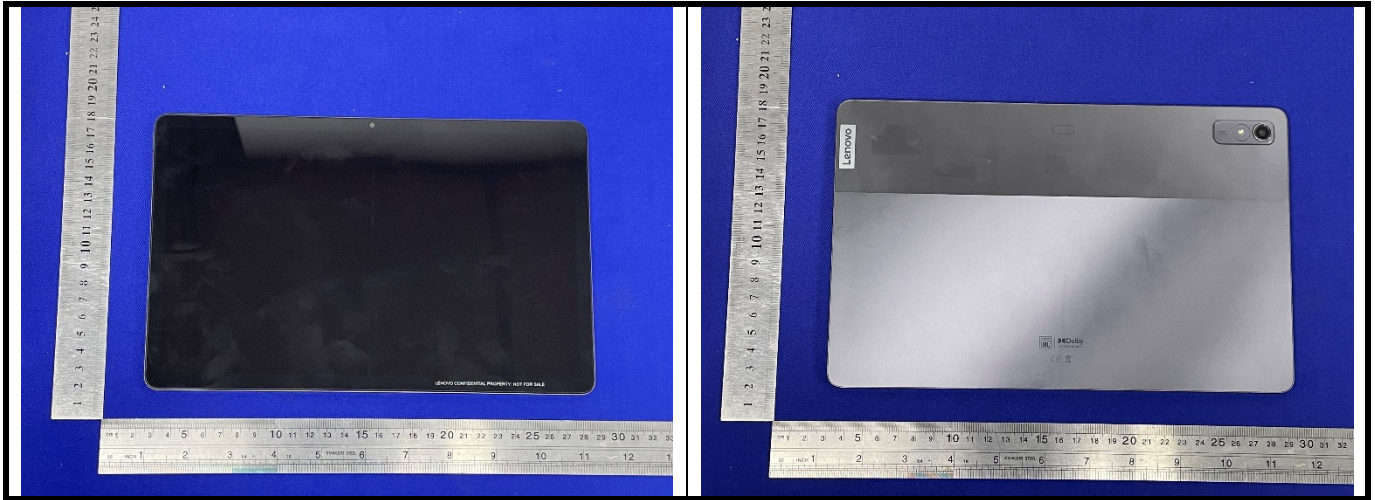


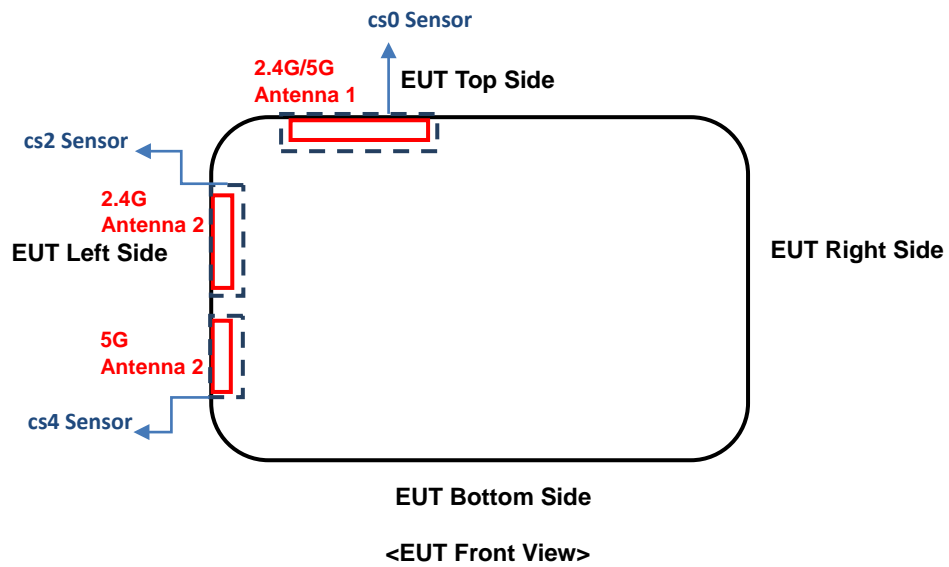
FCC SAR Test Report

<Photographs of EUT>



FCC SAR Test Report

<Antenna Location>



The separation distance for antenna to edge:

Antenna	To Left Side (mm)	To Right Side (mm)	To Top Side (mm)	To Bottom Side (mm)
2.4G/5G Antenna 1	44	156	0	158
2.4G Antenna 2	0	242	22	82
5G Antenna 2	0	242	102	26

FCC SAR Test Report

<Photographs of SAR Setup>



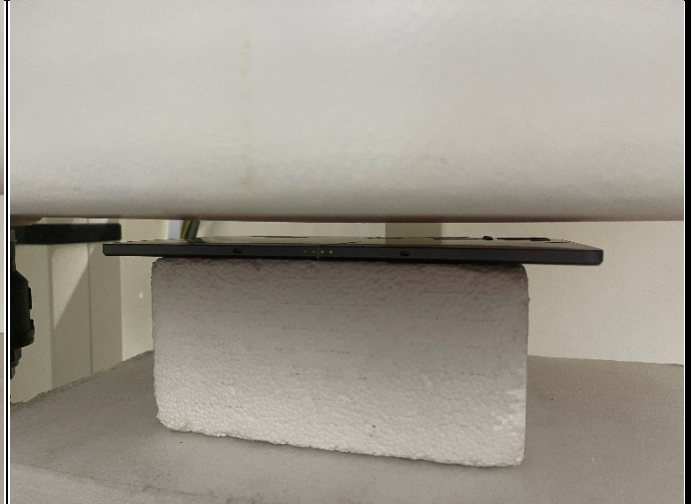
Rear Face of EUT with 0 cm Gap



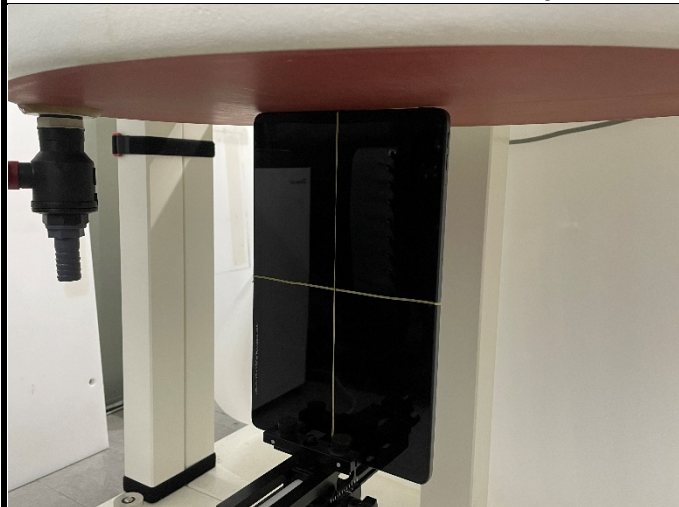
Rear Face of EUT with 0.5 cm Gap



Rear Face of EUT with 0.7 cm Gap



Rear Face of EUT with 1.2 cm Gap

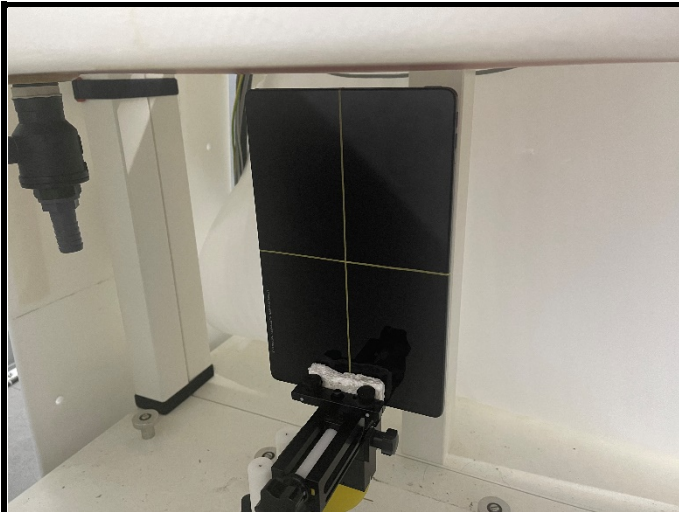


Left Side of EUT with 0 cm Gap



Left Side of EUT with 0.5 cm Gap

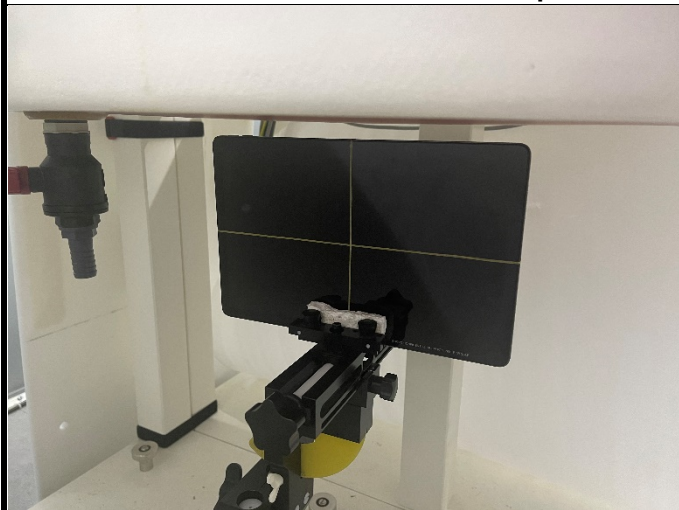
FCC SAR Test Report



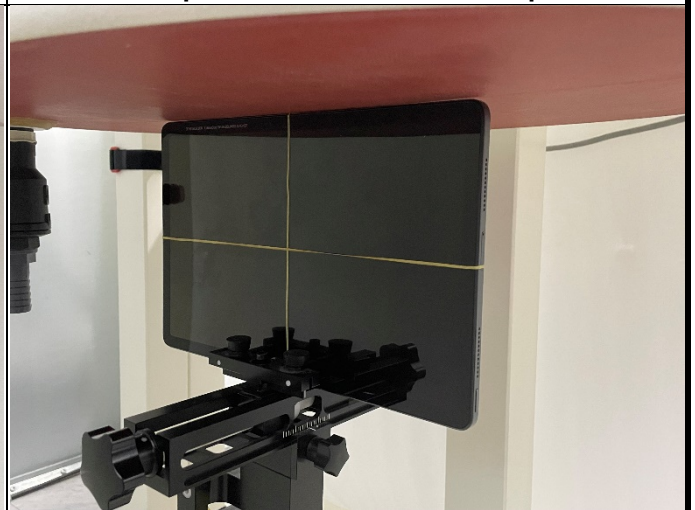
Left Side of EUT with 0.9 cm Gap



Top Side of EUT with 0 cm Gap



Top Side of EUT with 1.2 cm Gap



Bottom Side of EUT with 0 cm Gap