

# Appendix A

## Detailed System Check Results

1. System Performance Check
System Performance Check 2450 MHz Head
System Performance Check 5250 MHz Head
System Performance Check 5600 MHz Head
System Performance Check 5750 MHz Head

Test Laboratory: SGS-SAR Lab

## System Performance Check 2450MHz Head

**DUT: D2450V2; Type: Dipole; Serial: 1038**

Communication System: UID 0, CW; Frequency: 2450 MHz; Duty Cycle: 1:1

Medium: HSL2450; Medium parameters used:  $f = 2450$  MHz;  $\sigma = 1.794$  S/m;  $\epsilon_r = 38.507$ ;  $\rho = 1000$  kg/m<sup>3</sup>

Phantom section: Flat Section

DASY 5 Configuration:

- Probe: EX3DV4 - SN3982; ConvF(7.77, 7.77, 7.77); Calibrated: 2021-12-29
- Sensor-Surface: 1.4mm (Mechanical Surface Detection)
- Electronics: DAE4 Sn1428; Calibrated: 2021-04-09
- Phantom: SAM 3; Type: SAM; Serial: 1770
- DASY52 52.10.4(1527); SEMCAD X 14.6.14(7483)

**Body/d=10mm, Pin=250mW/Area Scan (9x9x1):** Measurement grid: dx=12mm, dy=12mm  
Maximum value of SAR (measured) = 15.7 W/kg

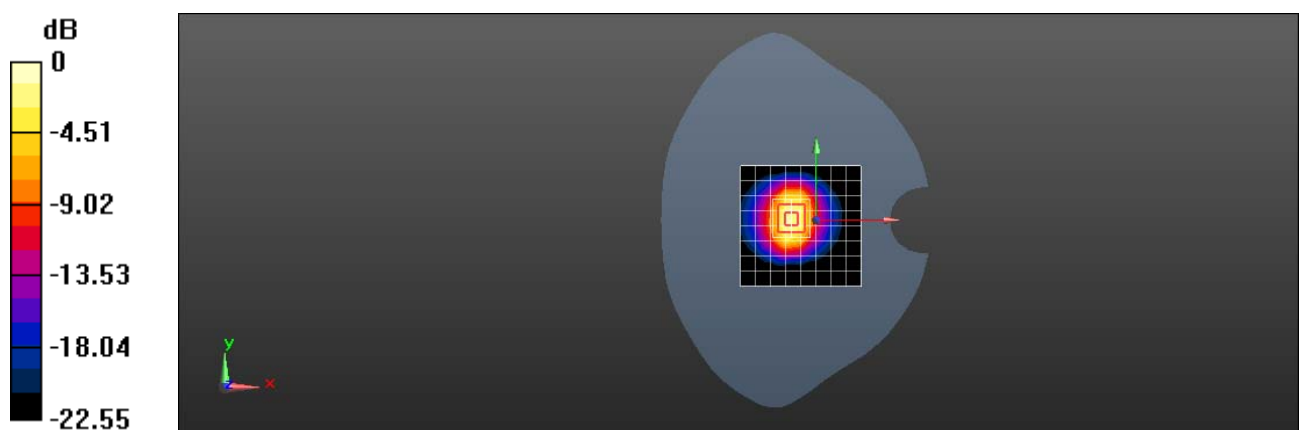
**Body/d=10mm, Pin=250mW/Zoom Scan (7x7x7)/Cube 0:** Measurement grid: dx=5mm, dy=5mm, dz=5mm

Reference Value = 85.92 V/m; Power Drift = 0.02 dB

Peak SAR (extrapolated) = 25.3 W/kg

**SAR(1 g) = 12.3 W/kg; SAR(10 g) = 5.66 W/kg**

Maximum value of SAR (measured) = 20.6 W/kg



0 dB = 20.6 W/kg = 13.14 dBW/kg

Test Laboratory: SGS-SAR Lab

## System Performance Check 5.25GHz Head

**DUT: D5GHzV2; Type: Dipole; Serial: 1174**

Communication System: UID 0, CW (0); Frequency: 5250 MHz; Duty Cycle: 1:1

Medium: HSL5G; Medium parameters used:  $f = 5250$  MHz;  $\sigma = 4.724$  S/m;  $\epsilon_r = 35.575$ ;  $\rho = 1000$  kg/m<sup>3</sup>

Phantom section: Flat Section

DASY 5 Configuration:

- Probe: EX3DV4 - SN3962; ConvF(5.51, 5.51, 5.51); Calibrated: 2021-04-26
- Sensor-Surface: 1.4mm (Mechanical Surface Detection)
- Electronics: DAE4 Sn1324; Calibrated: 2021-06-22
- Phantom: SAM 2; Type: SAM; Serial: TP:1563
- DASY52 52.10.4(1527); SEMCAD X 14.6.14(7483)

**Body/d=10mm, Pin=100mW, f=5250 MHz/Area Scan (10x10x1):** Measurement grid: dx=10mm, dy=10mm

Maximum value of SAR (measured) = 12.1 W/kg

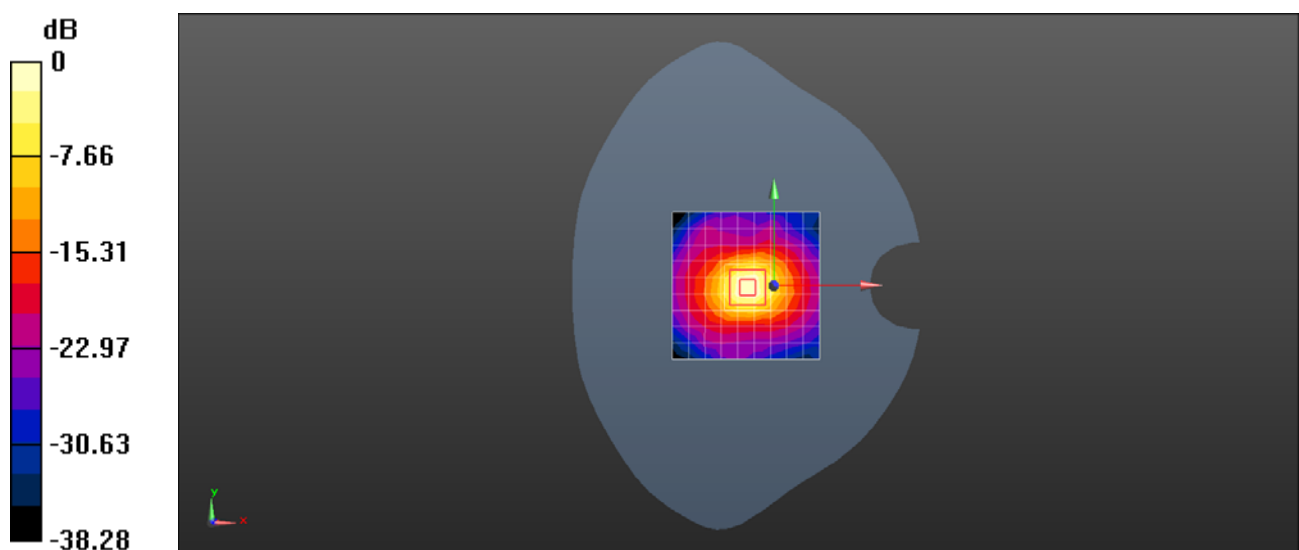
**Body/d=10mm, Pin=100mW, f=5250 MHz/Zoom Scan (8x8x7)/Cube 0:** Measurement grid: dx=4mm, dy=4mm, dz=1.4mm

Reference Value = 66.27 V/m; Power Drift = -0.06 dB

Peak SAR (extrapolated) = 29.8 W/kg

**SAR(1 g) = 7.03 W/kg; SAR(10 g) = 2 W/kg**

Maximum value of SAR (measured) = 16.5 W/kg



0 dB = 12.1 W/kg = 10.83 dBW/kg

Test Laboratory: SGS-SAR Lab

## System Performance Check 5.6GHz Head

**DUT: D5GHzV2; Type: Dipole; Serial: 1174**

Communication System: UID 0, CW (0); Frequency: 5600 MHz; Duty Cycle: 1:1

Medium: HSL5G; Medium parameters used:  $f = 5600$  MHz;  $\sigma = 5.198$  S/m;  $\epsilon_r = 34.903$ ;  $\rho = 1000$  kg/m<sup>3</sup>

Phantom section: Flat Section

DASY 5 Configuration:

- Probe: EX3DV4 - SN3962; ConvF(4.81, 4.81, 4.81); Calibrated: 2021-04-26
- Sensor-Surface: 1.4mm (Mechanical Surface Detection)
- Electronics: DAE4 Sn1324; Calibrated: 2021-06-22
- Phantom: SAM 2; Type: SAM; Serial: TP:1563
- DASY52 52.10.4(1527); SEMCAD X 14.6.14(7483)

**Body/d=10mm, Pin=100mW, f=5600 MHz/Area Scan (10x10x1):** Measurement grid: dx=10mm, dy=10mm

Maximum value of SAR (measured) = 17.1 W/kg

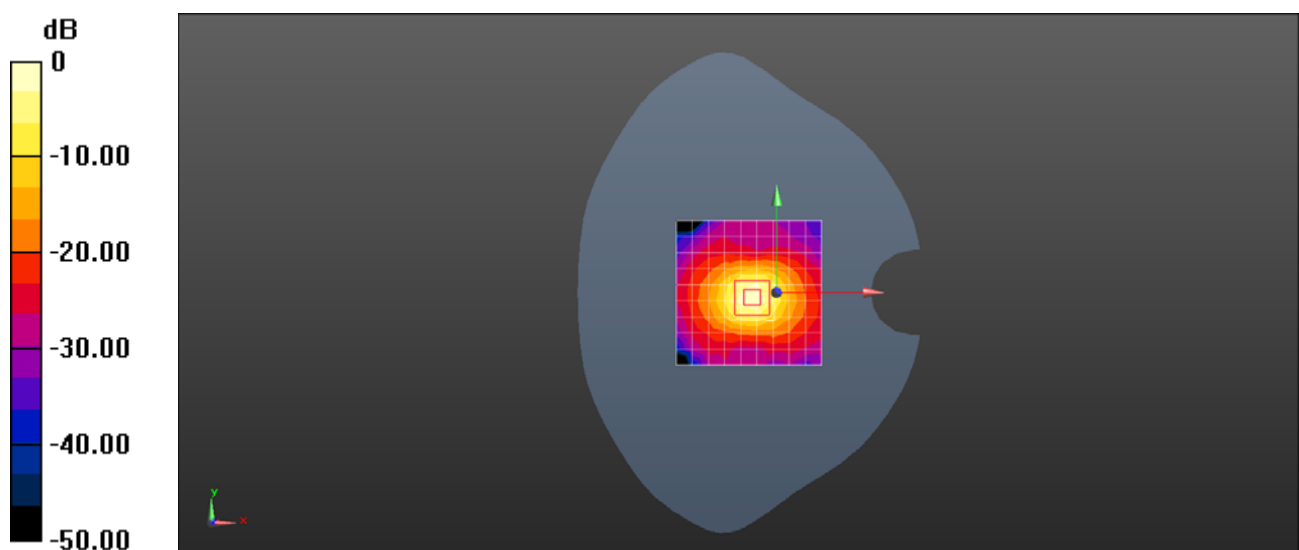
**Body/d=10mm, Pin=100mW, f=5600 MHz/Zoom Scan (8x8x7)/Cube 0:** Measurement grid: dx=4mm, dy=4mm, dz=1.4mm

Reference Value = 63.97 V/m; Power Drift = -0.11 dB

Peak SAR (extrapolated) = 36.6 W/kg

**SAR(1 g) = 7.98 W/kg; SAR(10 g) = 2.25 W/kg**

Maximum value of SAR (measured) = 20.1 W/kg



0 dB = 17.1 W/kg = 12.33 dBW/kg

Test Laboratory: SGS-SAR Lab

## System Performance Check 5.75GHz Head

**DUT: D5GHzV2; Type: Dipole; Serial: 1174**

Communication System: UID 0, CW (0); Frequency: 5750 MHz; Duty Cycle: 1:1

Medium: HSL5G; Medium parameters used:  $f = 5750$  MHz;  $\sigma = 5.381$  S/m;  $\epsilon_r = 34.531$ ;  $\rho = 1000$  kg/m<sup>3</sup>

Phantom section: Flat Section

DASY 5 Configuration:

- Probe: EX3DV4 - SN3962; ConvF(4.90, 4.90, 4.90); Calibrated: 2021-04-26
- Sensor-Surface: 1.4mm (Mechanical Surface Detection)
- Electronics: DAE4 Sn1324; Calibrated: 2021-06-22
- Phantom: SAM 2; Type: SAM; Serial: TP:1563
- DASY52 52.10.4(1527); SEMCAD X 14.6.14(7483)

**Body/d=10mm, Pin=100mW, f=5750 MHz/Area Scan (10x10x1):** Measurement grid: dx=10mm, dy=10mm

Maximum value of SAR (measured) = 17.1 W/kg

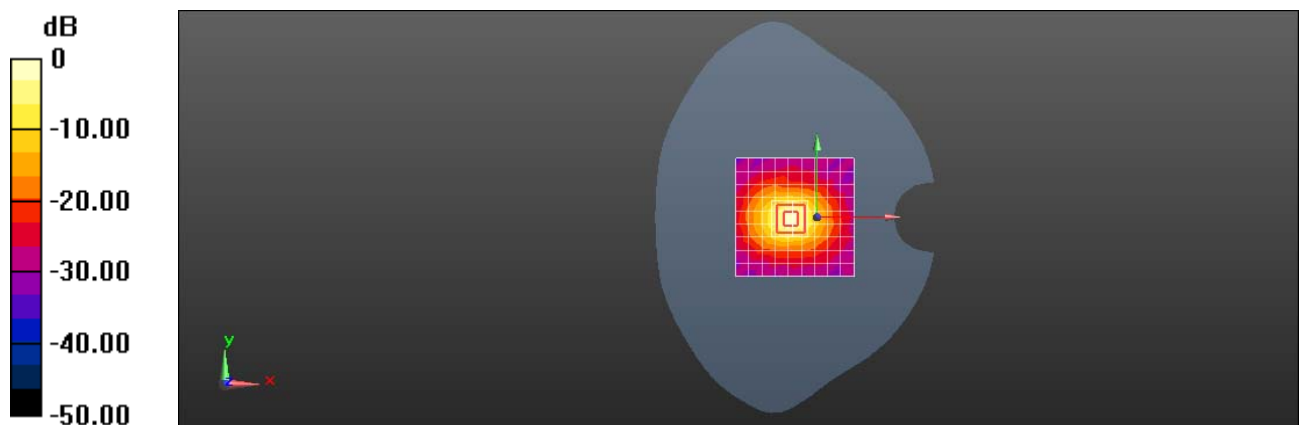
**Body/d=10mm, Pin=100mW, f=5750 MHz/Zoom Scan (8x8x8)/Cube 0:** Measurement grid: dx=4mm, dy=4mm, dz=1.4mm

Reference Value = 63.32 V/m; Power Drift = 0.04 dB

Peak SAR (extrapolated) = 34.4 W/kg

**SAR(1 g) = 8.31 W/kg; SAR(10 g) = 2.38 W/kg**

Maximum value of SAR (measured) = 19.9 W/kg



0 dB = 19.9 W/kg = 12.99 dBW/kg